

## Nemko Korea CO., Ltd.

300-2, Osan-Ri, Mohyun-Myun, Yongin-City, Kyungki-Do, KOREA

TEL:+82 31 322 2333

FAX:+82 31 322 2332

### FCC EVALUATION REPORT FOR CERTIFICATION

**Applicant :****Raptors Co., Ltd.****3<sup>rd</sup> floor, Royal B/D, Seocho-Dong, Seocho-Gu,  
Seoul, Korea (Post code : 137-070)****Attn. : Mr. In-Soo, Kim****Dates of Issue : October 06, 2003****Test Report No. : NK2DE610****Test Site : Nemko Korea Co., Ltd.  
EMC site, Korea****FCC ID*****RI6DX-100*****Brand Name*****DionX*****CONTACT PERSON****Raptors Co., Ltd.  
3<sup>rd</sup> floor, Royal B/D, Seocho-Dong, Seocho-Gu,  
Seoul, Korea , 137-070.  
Mr. In-Soo, Kim  
Telephone No. : +82 2 525 5310**

Applied Standard:

FCC 47 CFR Part 15, Subpart B : 2000

Classification :

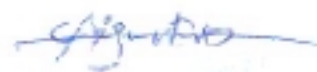
FCC Class B Device

EUT Type:

MP3 Player

The device bearing the brand name and FCC ID specified above has been shown to comply with the applicable technical standards as indicated in the measurement report and was tested in accordance with the measurement procedures specified in ANSI C63.4-1992.

I attest to the accuracy of data and all measurements reported herein were performed by me or were made under my supervision and are correct to the best of my knowledge and belief. I assume full responsibility for the completeness of these measurements and vouch for the qualifications of all persons taking them.

**Tested By : S. K. Lee  
Senior Engineer****Reviewed By : H.H. Kim  
Manager & Chief Engineer**

# ***TABLE OF CONTENTS***

---

<b>SCOPE</b>	<b>3</b>
<b>INTRODUCTION (Site Description)</b>	<b>4</b>
<b>TEST CONDITIONS &amp; EUT INFORMATION</b>	<b>5</b>
<b>SUMMARY OF TEST RESULTS</b>	<b>6</b>
<b>RECOMMENDATION / CONCLUSION</b>	<b>6</b>
<b>SAMPLE CALCULATION</b>	<b>6</b>
<b>DESCRIPTION OF TESTS (Conducted Emissions)</b>	<b>7</b>
<b>DESCRIPTION OF TESTS (Radiated Emissions)</b>	<b>8</b>
<b>TEST DATA (Conducted Emissions)</b>	<b>9</b>
<b>TEST DATA (Radiated Emissions)</b>	<b>10</b>
<b>PLOT OF EMISSIONS (Conducted Emissions Diagram)</b>	<b>12</b>
<b>ACCURACY OF MEASUREMENT</b>	<b>14</b>
<b>TEST EQUIPMENT</b>	<b>15</b>
<b>APPENDIX A - LABELLING REQUIREMENTS</b>	<b>16</b>
<b>APPENDIX B - CIRCUIT DIAGRAM</b>	<b>17</b>
<b>APPENDIX C - PHOTOGRAPHS OF TEST SET-UP</b>	<b>18</b>
<b>APPENDIX D - EUT PHOTOGRAPHS</b>	<b>20</b>
<b>APPENDIX E - USER'S MANUAL</b>	<b>27</b>
<b>APPENDIX F - SCHEMATIC DIAGRAM</b>	<b>28</b>

## SCOPE

---

Measurement and determination of electromagnetic emissions (EME) of radio frequency devices including intentional and/or unintentional radiators for compliance with the technical rules and regulations of the Federal Communications Commission under FCC part 15.

<b>Responsible Party :</b>	Raptors Co., Ltd.
<b>Contact Person :</b>	Mr. In-Soo, Kim
<b>Manufacturer :</b>	Raptors Co., Ltd. 3 <sup>rd</sup> floor, Royal B/D, Seocho-Dong, Seocho-Gu, Seoul, Korea , 137-070.
<b>Factory :</b>	Oracom 720, Osan-City, Kyungki-Do, Korea, 447-802.

- FCC ID: RI6DX-100
- Basic Model: DX-100
- Alternate Model : NMP-452D, MP-FUB65
- Brand Name: DionX
- EUT Type: MP3 Player
- Classification: FCC Class B
- Applied Standard: FCC 47 CFR Part 15 , Subpart B
- Test Procedure(s): ANSI C63.4 (1992)
- Dates of Test: September 25, 2003 to September 26, 2003
- Place of Tests: Nemko Korea Co., Ltd. EMC Site
- Test Report No.: NK2DE610

## INTRODUCTION

The measurement procedure described in American National Standard for Methods of Measurement of Radio-Noise Emissions from Low-Voltage Electrical and Electronic Equipment in the Range of 9kHz to 40GHz (ANSI C63.4-1992) was used in determining radiated and conducted emissions emanating from **Raptors Co., Ltd.**

FCC ID : **RI6DX-100, MP3 Player.**

These measurement tests were conducted at **Nemko Korea Co., Ltd. EMC Laboratory**.

The site address is 300-2, Osan-Ri, Mohyun-Myun, Yongin-City, Kyungki-Do, KOREA

The area of Nemko Korea Corporation LTD. EMC Test Site is located in a mountain area at 80 kilometers (48 miles) southeast and Incheon International Airport (Incheon Airport), 30 kilometers (18miles) south-southeast from central Seoul.

It is located in the valley surrounded by mountains in all directions where ambient radio signal conditions are quiet and a favorable area to measure the radio frequency interference on open field test site for the computing and ISM devices manufactures.

The detailed description of the measurement facility was found to be in compliance with the requirements of § 2.948 according to ANSI C63.4 on October 19, 1992.

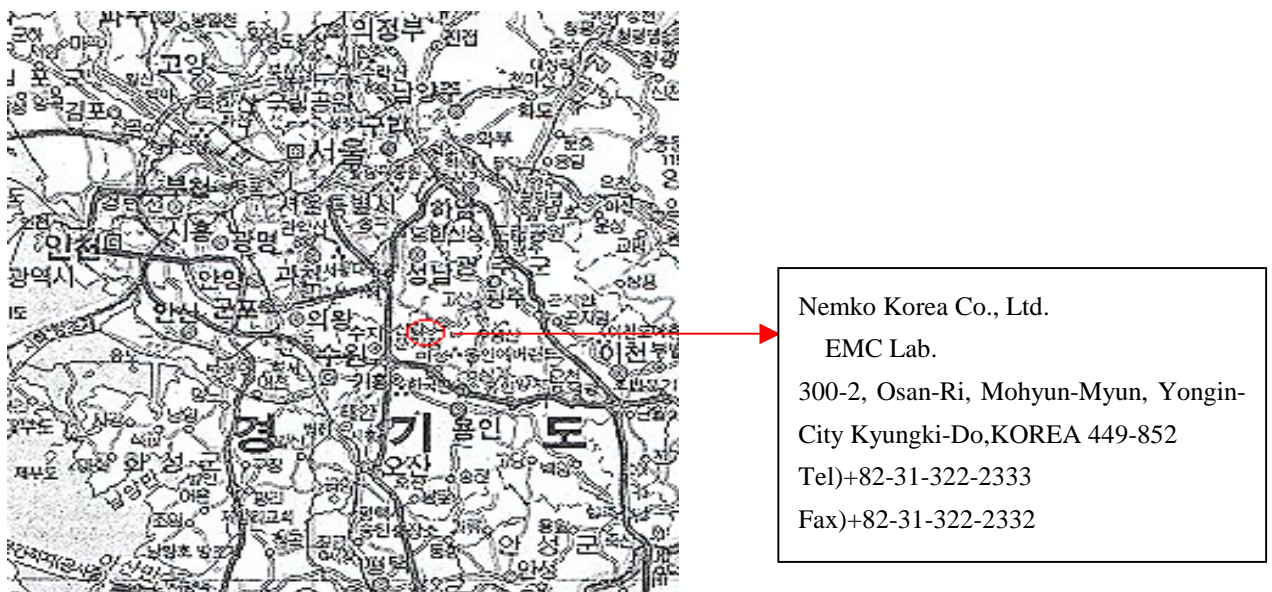


Fig. 1. The map above shows the Seoul in Korea vicinity area.

The map also shows Nemko Korea Corporation Ltd. EMC Lab. and Incheon Airport.

## TEST CONDITIONS & EUT INFORMATION

---

### Operating During Test

The MP3 player connected with PC was operated at download mode and play mode for the testing.

### Support Equipment

MP3 Player (EUT)	Raptors Co., Ltd., FCC ID: RI6DX-100 1.2m Shielded USB Cable 1.2m unshielded Line in stereo phone jack	S/N: N/A
Notebook PC	Compal Electronics Inc., M/N: PP04L (Latitude V710)	S/N: N/A
AC/DC Adaptor (Notebook PC)	Delta Electronics, M/N: ADP-70EB 1.8m unshielded AC power cable 2.0m Shielded DC Cable	S/N: N/A
Printer	HP, M/N: 4557-60104 1.8m Shield Dsub cable	S/N: SG88R131GW
AC/DC Adaptor (Printer)	Yokogawa, M/N: C5870A 1.8m unshielded AC power cable 1.5m unshielded DC Cable	S/N: N/A
PS/2 Mouse	Samsung Electro-Mechanics, M/N: OML3PP 1.5m unshielded Din cable	S/N: PRO010
Earphone	Raptors Co., Ltd., M/N: N/A 1.0m unshielded, stereo phone Jack	S/N: N/A

### EUT Information

Clock(s):	32.768kHz(FM Tuner) , 11.2896MHz(Codec)
Chipset(s):	TCC731(U1)
Interface Method:	USB 1.1
I/O Port(s)	USB, Earphone, Line In
Power Supply:	1.5V DC , AAA size Battery 1 pcs (Play Mode)
	5.0V DC (Download Mode)
FM:	87.5 ~ 108.0MHz (US/EU/KOR/CHN)
	76.0 ~ 91.0MHz (JAPAN)

## SUMMARY OF TEST RESULTS

---

The EUT has been tested according to the following specification:

Name of Test	Paragraph No.	Result	Remark
Conducted Emission	15.107	Complies	
Radiated Emission	15.109	Complies	

## RECOMMENDATION/CONCLUSION

---

The data collected shows that the **Raptors Co., Ltd.**

FCC ID : **RI6DX-100, MP3 Player.**

The highest emission observed was at **0.23 MHz** for conducted emissions with a Q.P margin of **12.0 dB**, at **240.05 MHz** for radiated emissions with a margin of **7.0 dB**.

## SAMPLE CALCULATION

---

$$\text{dB } \mu\text{V} = 20 \log_{10} (\mu\text{V}/\text{m})$$

$$\mu\text{V} = 10^{(\text{dB } \mu\text{V}/20)}$$

### EX. 1.

@57.7 MHz

Class B limit = 100  $\mu\text{V}/\text{m}$  = 40.0 dB  $\mu\text{V}/\text{m}$

Reading = 19.1 dB  $\mu\text{V}$  (calibrated level)

Antenna factor + Cable Loss = 10.12 dB

Total = 29.22 dB  $\mu\text{V}/\text{m}$

Margin = 40.0 - 29.22 = 10.78

10.78 dB below the limit

## DESCRIPTION OF TESTS

### Conducted Emissions

The Line conducted emission test facility is located inside a 4 X 7 X 2.5 meter shielded enclosure.

It is manufactured by EM engineering. The shielding effectiveness of the shielded room is in accordance with MIL-STD-285 or NSA 65-6.

A 1m X 1.5m wooden table 0.8m height is placed 0.4m away from the vertical wall and 1.5m away from the side of wall of the shielded room

Rohde & Schwarz (ESH3-Z5) and Kyoritsu (KNW-407) of the 50ohm/50uH Line Impedance Stabilization Network(LISN) are bonded to the shielded room.

The EUT is powered from the Rohde & Schwarz LISN and the support equipment is powered from the Kyoritsu LISN. Power to the LISN s are filtered by high-current high insertion loss Power line filters. The purpose of filter is to attenuate ambient signal interference and this filter is also bonded to shielded enclosure. All electrical cables are shielded by tinned copper zipper tubing with inner diameter of 1/2".

If DC power device, power will be derived from the source power supply it normally will be powered from and this supply lines will be connected to the LISNs,

All interconnecting cables more than 1 meter were shortened by non inductive bundling (serpentine fashion) to a 1 meter length.

Sufficient time for EUT, support equipment, and test equipment was allowed in order for them to warm up to their normal operating condition. The RF output of the LISN was connected to the spectrum analyzer to determine the frequency producing the maximum EME from the EUT. The spectrum was scanned from 150kHz to 30MHz with 20msec sweep time.

The frequency producing the maximum level was re-examined using the EMI test receiver. (Rohde & Schwarz ESCS30).

The detector function were set to CISPR quasi-peak mode & average mode.

The bandwidth of receiver was set to 9KHz. The EUT, support equipment, and interconnecting cables were arranged and manipulated to maximize each EME emission.

Each emission was maximized by; switching power lines; varying the mode of operation or resolution; clock or data exchange speed; scrolling H pattern to the EUT and of support equipment, and powering the monitor from the floor mounted outlet box and computer aux AC outlet, if applicable; which ever determined the worst case emission.

Each EME reported was calibrated using the R&S signal generator.

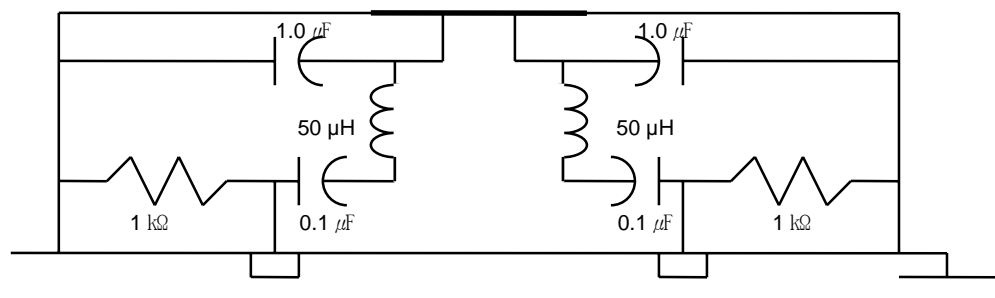


Fig. 2. LISN Schematic Diagram

## DESCRIPTION OF TESTS

### **Radiated Emissions**

Preliminary measurement were made indoors at 3 meter using broad band antennas, broadband amplifier, and spectrum analyzer to determine the frequency producing the maximum EME. Appropriate precaution was taken to ensure that all EME from the EUT were maximized and investigated. The Technology configuration, clock speed, mode of operation or video resolution, turntable azimuth with respect to the antenna was note for each frequency found.

The spectrum was scanned from 30 to 1000MHz using Biconical log Antenna(ARA, LPB-2520/A). Above 1GHz, log periodic antenna (Rohde Schwarz HL025:upto 18GHz) was used.

Final Measurements were made outdoors at 3 or 10m test range using Logbicon Super Antenna(Schwarzbeck, VULB9166) or log periodic antenna.( Rohde Schwarz HL025)

The test equipment was placed on a wooden table.

Sufficient time for the EUT, support equipment, and test equipment was allowed in order for them to warm up to their normal operating condition.

Each frequency found during pre-scan measurements was reexamined and investigated using EMI test receiver.(ESCS30)

The detector function was set to CISPR quasi-peak mode or Average mode and the bandwidth of the receiver was set to 120KHz or 1MHz depending on the frequency or type of signal.

The half wave dipole antenna was tuned to the frequency found during preliminary radiated measurements.

The EUT support equipment and interconnecting cables were re configured to the setup producing the maximum emission for the frequency and were placed on top of a 0.8m high non- metallic 1.0X 1.5 meter table.

The EUT, support equipment and interconnecting cables were re-arranged and manipulated to maximize each EME emission.

The turn table containing the Technology was rotated; the antenna height was varied 1 to 4meter and stopped at the azimuth or height producing the maximum emission Each emission was maximized by : switching power lines; varying the mode of operation or resolution; clock or data exchange speed; scrolling H pattern to the EUT and of support equipment, and powering the monitor from the floor mounted outlet box and computer aux AC outlet, if applicable; which ever determined the worst case emission.

Each EME reported was calibrated using the R/S signal generator.

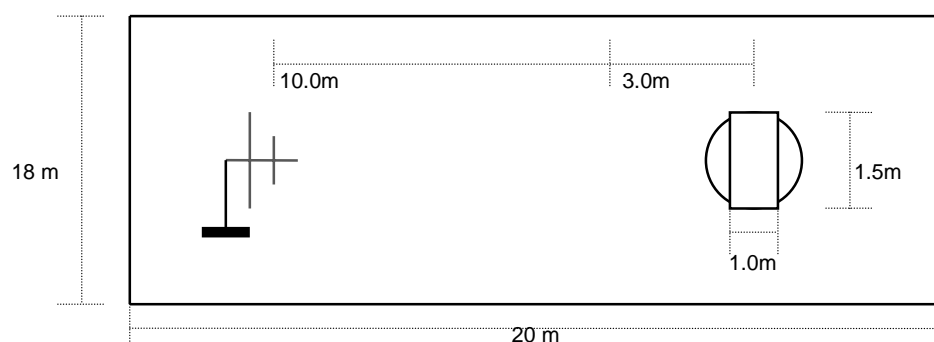


Fig. 3. Dimensions of Outdoor Test Site



# TEST DATA

## Conducted Emissions

FCC ID : RI6DX-100

Test Mode : download mode.

Frequency (MHz)	Level(dB $\mu$ V)		Line	Limit(dB $\mu$ V)		Margin(dB)	
	Q-Peak	Average		Q-Peak	Average	Q-Peak	Average
0.15	53.1	44.7	N	66.0	56.0	12.9	11.3
0.23	50.4	45.3	N	62.4	52.4	12.0	7.1
0.53	41.0	35.8	L	56.0	46.0	15.0	10.2
0.76	40.3	33.9	L	56.0	46.0	15.7	12.1
1.14	39.9	39.1	N	56.0	46.0	16.1	6.9
29.38	34.8	24.7	N	60.0	50.0	25.2	25.3

Table 1. Line Conducted Emissions Tabulated Data

### NOTES:

1. Measurements using CISPR quasi-peak mode & average mode.
2. All modes of operation were investigated and the worst -case emission are reported. See attached Plots.
3. The limit for Class B device is on the FCC Part section 15.107(a).
4. Line L = Line Line N = Neutral



Tested by S. K. Lee

## TEST DATA

### Radiated Emissions

■ FCC ID : RI6DX-100

■ Test Mode : download mode.

Frequency (MHz)	Reading (dB $\mu$ W)	Pol** (H/V)	AF+CL+Amp (dB)***	Result (dB $\mu$ W/m)	Limit (dB $\mu$ W/m)	Margin (dB)
132.01	50.2	V	-15.4	34.8	43.5	8.7
231.56	49.3	H	-12.9	36.4	46.0	9.6
240.05	51.7	H	-12.7	39.0	46.0	7.0
246.24	47.7	H	-12.6	35.1	46.0	10.9
319.93	48.7	H	-10.8	37.9	46.0	8.1
392.04	35.7	H	-8.9	26.8	46.0	19.2

Table 2. Radiated Measurements at 3meters

■ FCC ID : RI6DX-100

■ Test Mode : play mode.

Frequency (MHz)	Reading (dB $\mu$ W)	Pol** (H/V)	AF+CL+Amp (dB)***	Result (dB $\mu$ W/m)	Limit (dB $\mu$ W/m)	Margin (dB)
203.48	48.5	V	-13.6	34.9	43.5	8.6
214.79	44.9	V	-13.4	31.5	43.5	12.0
237.40	50.5	V	-12.8	37.7	46.0	8.3
248.69	49.7	V	-12.5	37.2	46.0	8.8
271.30	46.5	V	-12.0	34.5	46.0	11.5
293.86	44.7	V	-11.5	33.2	46.0	12.8

Table 3. Radiated Measurements at 3meters

■ FCC ID : RI6DX-100

■ Test Mode : Tune to the broadcasting channels

T. Freq.* (MHz)	Frequency (MHz)	Pol.** (H/V)	Reading (dB)	A.F + C.L+Amp*** (dB)	Result (dBuV/m)	Limit (dBuV/m)	Margin (dB)
87.5	98.20	V	50.3	-17.6	32.7	43.5	10.8
	392.80	V	39.6	-8.9	30.7	46.0	15.3
	785.60	V	26.7	1.2	27.9	46.0	18.1
	982.00	H	27.7	5.4	33.1	54.0	20.9
98.0	108.70	V	54.2	-17.3	36.9	46.0	9.1
	434.80	V	33.2	-7.9	25.3	46.0	20.7
	543.50	H	33.8	-5.1	28.7	46.0	17.3
	760.90	H	29.3	0.6	29.9	46.0	16.1
	869.60	V	32.0	3.2	35.2	46.0	10.8
	978.30	V	27.1	5.3	32.4	54.0	21.6
108.0	118.70	H	32.0	-17.3	14.7	46.0	31.3
	237.40	H	31.1	-12.8	18.3	46.0	27.7
	593.50	V	26.1	-3.8	22.3	46.0	23.7
	712.20	H	26.4	-0.6	25.8	46.0	20.2
	830.90	H	28.1	2.3	30.4	46.0	15.6
	949.60	H	30.4	4.8	35.2	46.0	10.8

Table 4. Radiated Measurements at 3meters

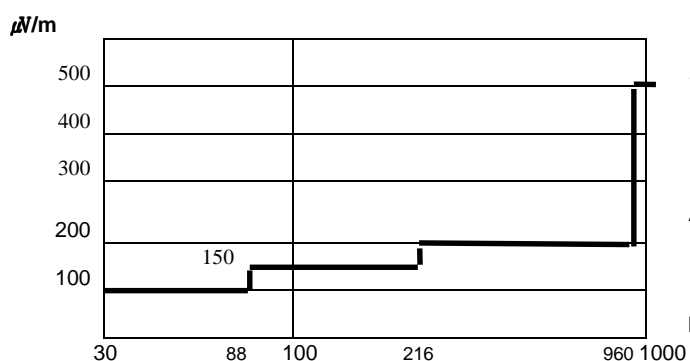


Fig. 4. Limits at 3 meters

**NOTES:**

1. \*T.Freq. = Tuning Frequency
2. \*\*Pol. H=Horizontal V=Vertical
3. \*\*\*AF+CL+Amp. = Antenna Factor + Cable Loss + Amplifier.
4. The limit for Class B device is on the FCC Part section 15.109(a).
5. Measurements using CISPR quasi-peak mode. Above 1GHz, peak detector function mode is used using a resolution bandwidth of 1MHz and a video bandwidth of 1MHz. The peak level complies with the average limit. Peak mode is used with linearly polarized horn antenna and low-loss microwave cable.

S.K. Lee. = [Signature]

Tested by **S. K. Lee**

# PLOTS OF EMISSIONS

● **Conducted Emission at the Mains port (Line)**

Scan Settings (1 Range)

----- Frequencies -----

Start            Stop            Step

150k            30M            5k

----- Receiver Settings -----

IF BW    Detector    M-Time    Atten    Preamp

9k        PK+AV        20ms    10dBLN    OFF

Transducer No.

20

Start

9k

Stop

30M

Name

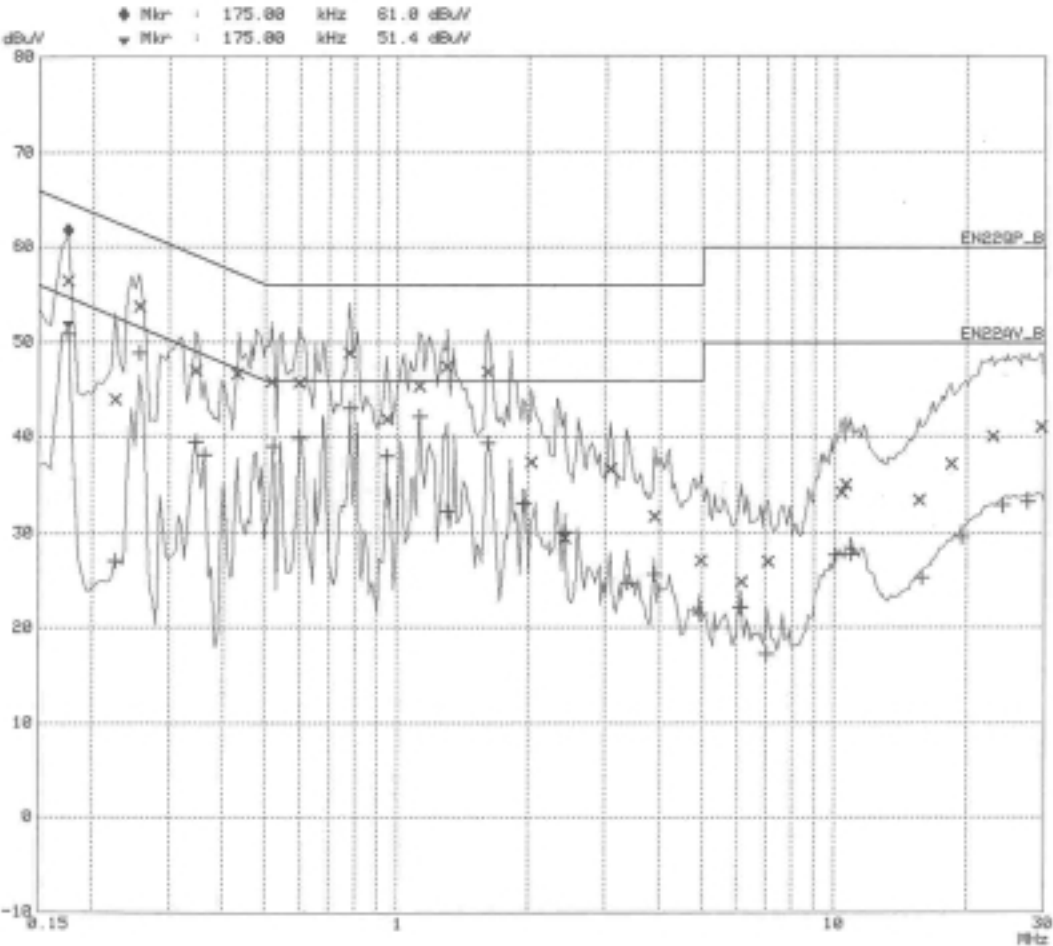
LISN\_RS

Final Measurement: x QP / + AV

Meas Time: 200 ms

Subranges: 25

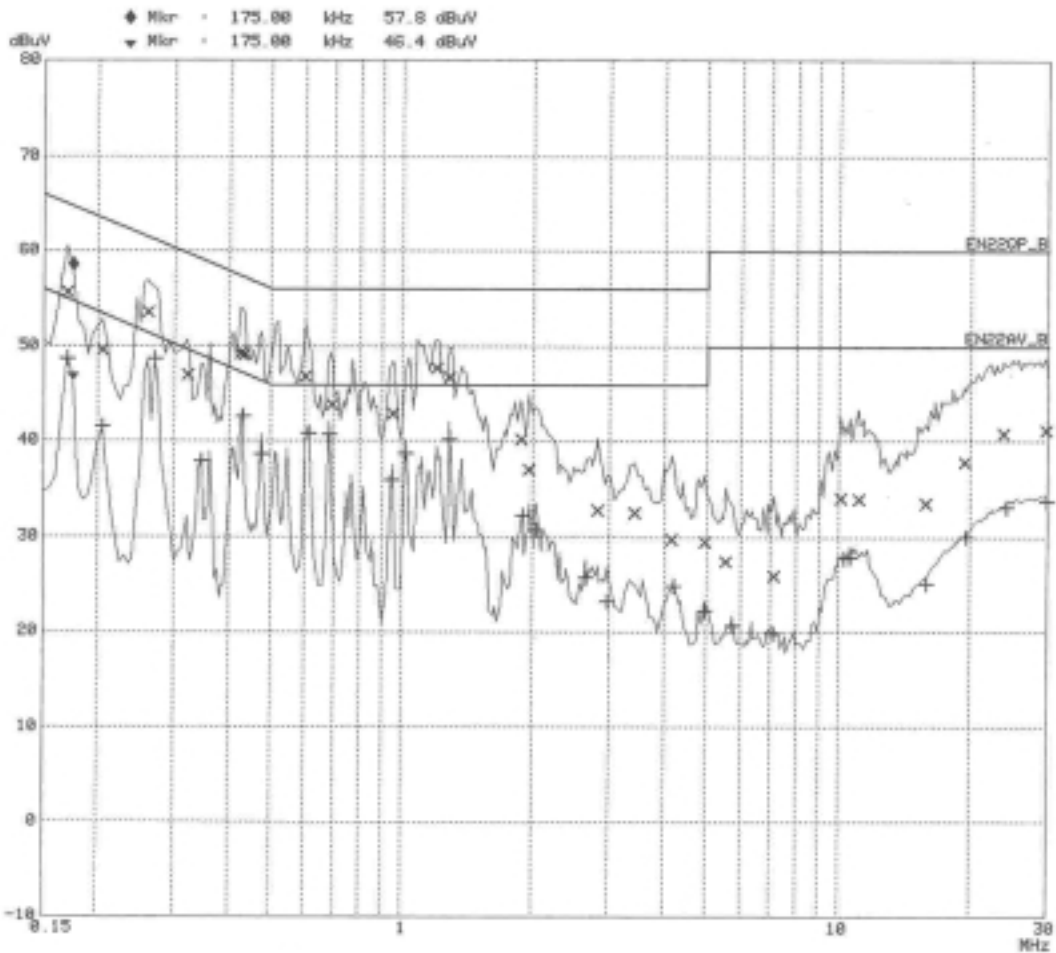
Acc Margin: 50dB



# PLOTS OF EMISSIONS

• Conducted Emission at the Mains port (Neutral)

Scan Settings (1 Range)  
 |----- Frequencies -----| |----- Receiver Settings -----|  
 Start Stop Step IF BW Detector M-Time Atten Preamp  
 150k 30M 5k 9k PK+AV 20ms 10dBLN OFF  
 Transducer No. Start Stop Name  
 20 9k 30M LISN\_RS  
 Final Measurement: x QP / + AV  
 Meas Time: 200 ms  
 Subranges: 25  
 Acc Margin: 50dB



## ACCURACY OF MEASUREMENT

The Measurement Uncertainties stated were calculated in accordance with the requirements of NIST Technical Note 1297 with the confidence level of 95%

### 1. Radiation Uncertainty Calculation

<i>Contribution</i>	<i>Probability Distribution</i>	<i>Uncertainty(+/-dB)</i>
Antenna Factor	Normal (k=2)	$\pm 0.5$
Cable Loss	Normal (k=2)	$\pm 0.04$
Receiver Specification	Rectangular	$\pm 2.0$
Antenna directivity	Rectangular	$\pm 1.0$
Antenna Factor variation with Height		
Antenna Phase Center Variation		
Antenna Factor Frequency Interpolation		
Measurement Distance Variation		
Site Imperfections	Rectangular	$\pm 2.0$
Mismatch:Receiver VRC $r_i=0.3$ Antenna VRC $r_R=0.1(B_i)0.4(L_p)$ Uncertainty Limits $20\log(1\pm r_i r_R)$	U-Shaped	$+ 0.25 / - 0.26$
System Repeatibility	Std.deviation	$\pm 0.05$
Repeatability of EUT	-	-
Combined Standard Uncertainty	Normal	$\pm 1.77$
Expended Uncertainty U	Normal (k=2)	$\pm 3.5$

### 2. Conducted Uncertainty Calculation

<i>Contribution</i>	<i>Probability Distribution</i>	<i>Uncertainty(+/-dB)</i>
Receiver Specification	Normal (k=2)	$\pm 2.0$
LISN coupling spec.	Normal (k=2)	$\pm 0.4$
Cable and input attenuator cal.	Rectangular	$\pm 0.4$
Mismatch:Receiver VRC $r_i=0.3$ LISN vrc $r_g=0.1$ Uncertainty Limits $20\log(1\pm r_i r_R)$	U-Shaped	$\pm 0.26$
System Repeatibility	Std.deviation	$\pm 0.68$
Repeatability of EUT	-	-
Combined Standard Uncertainty	Normal	$\pm 1.18$
Expended Uncertainty U	Normal (k=2)	$\pm 2.4$

## TEST EQUIPMENT

No.	Instrument	Manufacturer	Model	Calibration Date
1	*Test Receiver	R & S	ESCS 30	2003.09
2	Test Receiver	PMM	PMM9000	2003.06
3	Amplifier	HP	8447F	2003.07
4	*Amplifier	HP	8447F	2002.11
5	*Amplifier	HP	8447F	2003.01
6	*Spectrum Analyzer	Advantest	R3265A	2003.03
7	Spectrum Analyzer	HP	8566B	2003.03
8	*Logbicon Super Antenna	Schwarzbeck	VULB9166	2003.05
9	Log-Periodic Antenna	R & S	HL025	2003.01
10	Dipole Antenna	R & S	VHA9103	2003.05
11	Dipole Antenna	R & S	UHA9105	2003.05
12	*Biconical Log Antenna	ARA	LPB-2520/A	2003.05
13	Absorbing Clamp	R & S	MDS21	2003.06
14	High Voltage Probe	R & S	ESH2-Z3	2002.10
15	Signal Generator	R & S	SMP02	2002.12
16	Matching Pad	R & S	RAM358.5414.02	2003.05
17	*LISN	R & S	ESH3-Z5	2002.10
18	*LISN	Kyoritsu	KNW-407	2003.04
19	LISN	Kyoritsu	KNW-408	2002.12
20	*Position Controller	EM Eng.	N/A	N/A
21	*Turn Table	EM Eng.	N/A	N/A
22	*Antenna Mast	EM Eng.	N/A	N/A
23	*Anechoic Chamber	EM Eng.	N/A	N/A
24	*Shielded Room	EM Eng.	N/A	N/A

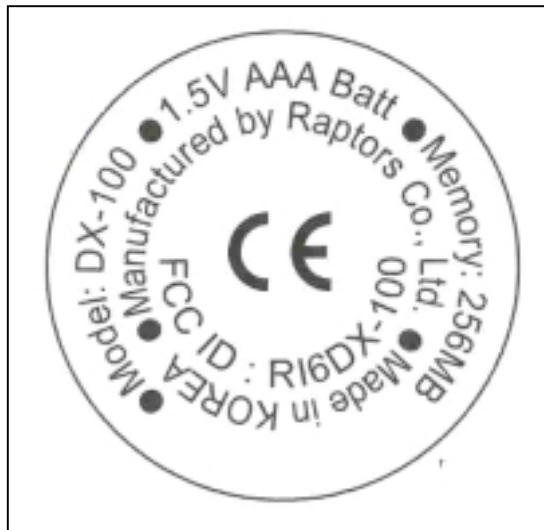
\*) Test equipment used during the test

## APPENDIX A – LABELLING REQUIREMENTS

---

### Labelling Requirements

The sample label shown shall be *permanently affixed* at a conspicuous location on the device and be readily visible to the user at the time of purchase.



- FCC ID Location of EUT





## ***APPENDIX B – CIRCUIT DIAGRAM***

---

## ***APPENDIX E – USER’S MANUAL***

---

## ***APPENDIX F – SCHEMATIC DIAGRAM***

---