



Operation manual

Model: SF-403EX

Welcome

Thank you very much for the purchase of mini-compact digital audio player iLyn.

iLyn digital audio player is not only designed and manufactured to fit our company's quality standard and International Specification standard, but also is manufactured after conducting strict quality-test.

We are certain that SF-403EX digital audio player, after being manufactured through such procedures, will bring you a high satisfaction.

We truly appreciate your purchase of iLyn and we hope that you will have great life with SF-403EX.

Since Sodiff E&T Co., Ltd. have the ownership of copyright of this product, the use of this product's operation manual, pictures, software, and other related documents will require permission to use from Sodiff E&T Co., Ltd. Authorization and Commercial use without permission will end up in legal punishment.

- The content of the operation manual and function of the product can vary depending on the circumstances.

I . Getting ready

1. Welcome 2.Warning 3.Special features 4.Components check 5.Name of the components

II. Connecting to your computer

1. Connecting to computer 2. Installing UMS driver to Windows 98
3. Using portable disk – file download, upload –disconnecting USB cable–
Formatting
4. Using LOGO CONVERT 5. Recharging the battery

III. The basic operations

1. Listening to the songs 2.Adjusting the volume 3.Hold setting 4.
Recording –Voice recording –external source recording – FM radio
recording 5. FM radio recording

IV. Additional Functions

1. Setting interval repeat 2. Mode change
3. Utilizing Navigation 4. Menu setting 5.Encoding setting
6. Play control setting
–EQ Setting (EQ select, SRS, True–bass, Wow, user EQ) –Speed
controlling –play mode setting 7.File delete/format 8.Timer setting
9. Display setting –LCD (contrast, Time) –File/TAG –(watch) setting
10.Memory capacity check 11.Language setting 12.User Logo setting
13. Firmware Upgrade/Font upgrade 14. Forced format

VI. Appendix

menu at glance

VII. Customer Service

It is not broken

Product features

Quality Certificate

☐ Caution

Please be cautious with following circumstances in order to use your player safely

1. Do not let it get shocked or impacted.

This player will not have any trouble during walking and running, but being dropped or getting hit by heavy object will cause damage.

2. Do not let water get into your player.

When water or any liquid gets inside of your machine, it will damage inner components of you player.

3. Storage environment

Avoid wet and humid, magnetic field forming, strong heat emitting area.

4. Do not put heavy object on top of your player. Avoid chemical products such as benzene, thinner.

5. Never try to open or reconstruct your player.

6. Try to not to listen with the volume set to the highest in order to prevent hearing loss.

7. Keeping your rechargeable lithium ion battery should take the cautions written below.

- Battery functioning temperature: -40C ~ + 80C
- USB Recharging temperature: 0C ~ + 45C
- Usable period: -20C ~ + 35C (More than 6 months)
- 20C ~ + 45C (within a month)

※ When it is too hot or too cold the usable period of the battery will be reduced, so please keep in under proper temperature (-20C ~ + 35C).

8. When radio record setting is on, the battery consumption will be at large, so when you are not using the program please keep the radio-recording time setting to off.

☐ Product features

- Time set up

Year, Month, Day, Time can be displayed.

- WMA Direct Encoding

Saves and Plays mp3 files and Microsoft's Window Media Audio file

- FM Radio/Real time FM recording

Reserve the time of your desired Radio play then record

- Removable disk function (play&plug)

Without specific installing CD, USB plug will auto-detect the driver.

- Various equalizer (EQ) support and 3D surround system support (SRS)

EQ (Normal, Classic, Live, Pop, Rock, SRS) and user EQ setting can be chosen for the user to make your listening environment more exciting.

- . Voice recording function

With high quality WMA format, users can record maximum of 18:40 hour (256M, with 32 Bit-Rate standard).

- . Various play modes

One, RPT One, DIR One, RPT DIR, DIR Random, ALL One, RPT ALL, ALL Random RP, Intro, A-B section play

- . Folder creating function (Infinite folders can be created)

MP3, WMA, REC will be managed within folders; therefore, fast search and save will be achieved.

- . Multi-Language Support

Korean, English, Simple Chinese/ Traditional Chinese and other more languages and display of the song title and the lyrics in supported languages.

- . Rechargeable Lithium ion Battery installed (420mAh)

No need to buy other battery; therefore the burden of replacing is relieved and recharging can be simply done through USB connection.

- . Organic EL display

Bright and elegant display can be achieved by Organic EL display.

- . Play Speed Control

Various play speed (Slow:-80%, Normal: 0%, Fast: 100%) control will help you studying foreign language by enabling clearer pronunciations with attached FF/REW jog button.

- . Firmware Upgrade

By Utilizing Firmware download function, this functions can be upgraded.

- . Resume function to the unit of second

When the power was turned off while playing, the song will automatically start from where it ended, when power is turned on.

- . File Delete (Folder)

Each folder can be selected then deleted, also format function will allow you to delete every file at once.

- . Alarm Function (sleep, record, power)

Certain time interval(0~180 minutes) can be selected for song play, Voice record/play.

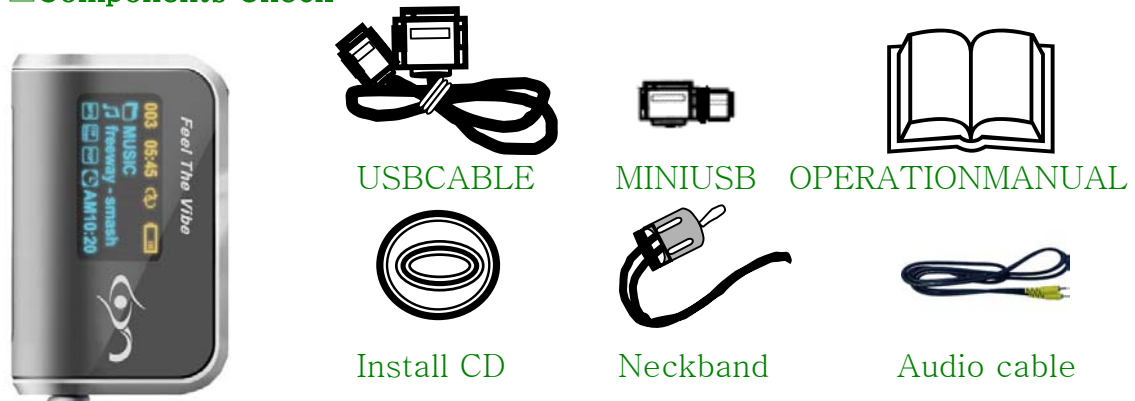
- . Memory Capacity Indicator

Displays available memory left.

- . NetSync support and auto-lyrics display function

By supporting NetSync EBS, foreign language study, contents use, and auto-lyrics display can be supported.

□ Components Check



〈Earphone, case and armband are optional〉

– Installed memory holding capacity can have a little difference from the memory that you can actually use, as inner firmware need to use some parts of them.

– You can buy or exchange your accessories that can be purchased at the iLyn customer's center.

□ Names of each components



Recommended PC environment :

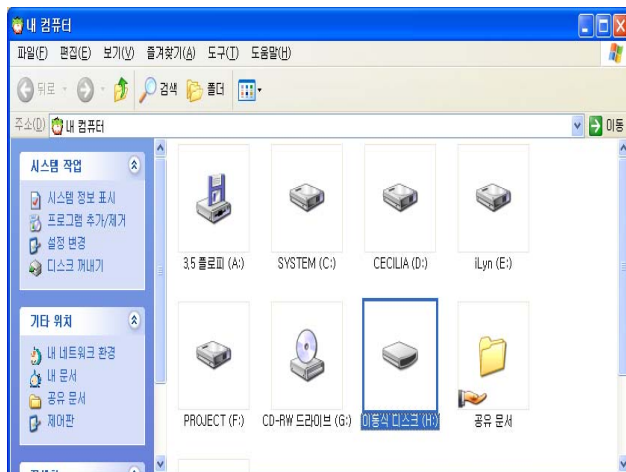
- USB 1.1 supportable port
- Over Pentium 133MHz
- OS : Win 98SE/ME/2000/XP/MAC 9.2, 10.2

□ Connecting to the computer

※ If you have Windows 98 you need to install USB driver separately.
Refer to "Installing UMS DRIVER to Windows 98" if you want more detailed install process.

1. Connect USB Cable (bigger part) to USB port of the computer.

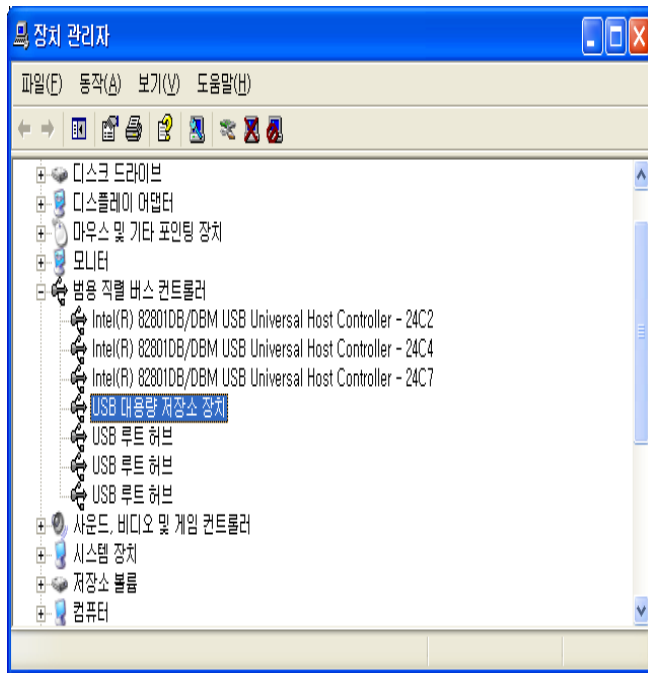
2. Connect USB Cable (smaller part) to MP3 Player.



3. If connected correct you can see "USB Connect" on the MP3 screen and if you open explorer or my computer folder on your computer, you can see "Portable disk".

※ When you first connect MP3 Player to the computer, needed driver installing screen will appear.

4. Ways to check connection of USB driver



- Windows 98/ME :

My computer(explorer) -> Control panel -> System -> device manager

- Windows 2000 :

My computer(explorer) -> Control panel -> System -> Hardware -> device manager

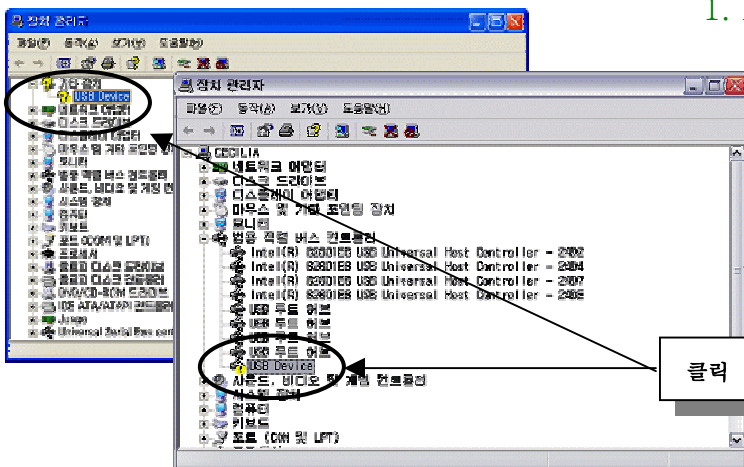
- Windows XP :

My computer(explorer) -> Control panel -> Performance and maintenance management -> System -> Hardware -> device manager

5. In case, portable disk doesn't appear refer to 'USB driver update'.

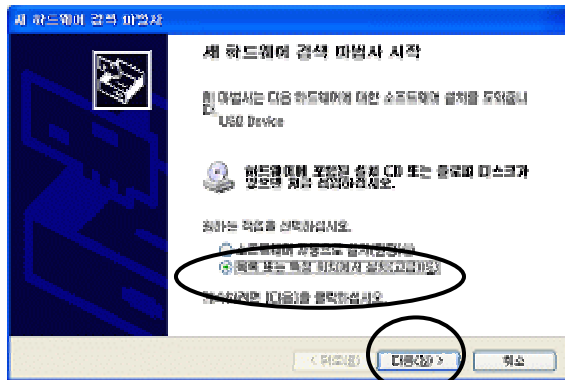
□ When you are not connectable to your computer

◎ USB driver update



1. Make sure to check USB device (?), ?, 'unknown device' on other device or Parallel Serial Bus(Windows98, ME : Universal)controller from device manager.

2. Double click 'next'.



3. Choose driver tap and start driver update

4. Choose list or specific location install.

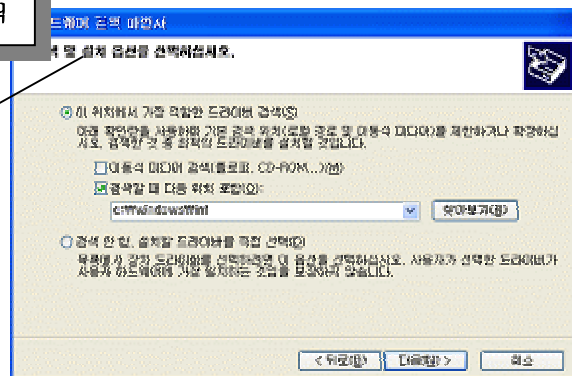
5. Click 'Next'

6. Including the area of search : Input

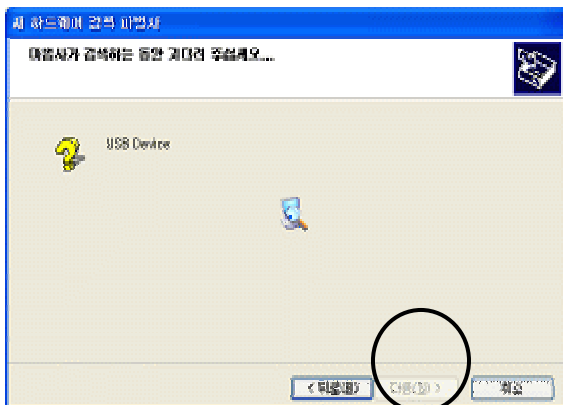
C:\Windows\Winf.

< If you have Win 2000

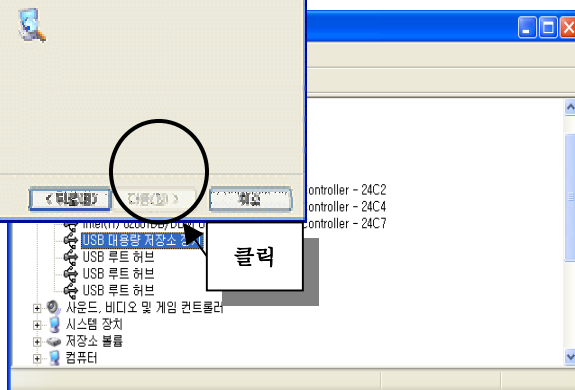
C:\Windows\Winf>



7. Searching



8. When everything completed, you can check large capacity hold device, as it is shown in the left picture.



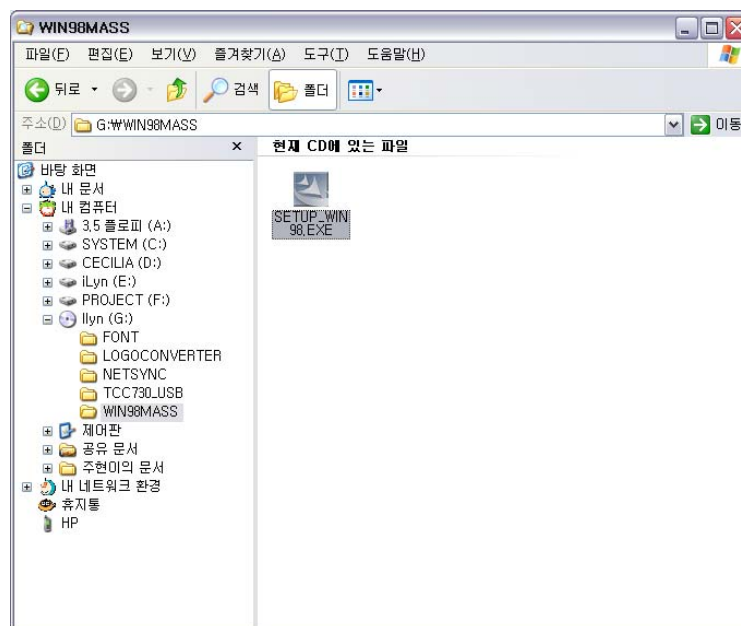
□ Install UMS DRIVER to windows 98

- . In case you have Windows 2000/ME/XP your computer recognize PLUG&PLAY function automatically.

- . In case you have Windows 98/98SE, it is usable only when UMS driver is installed.

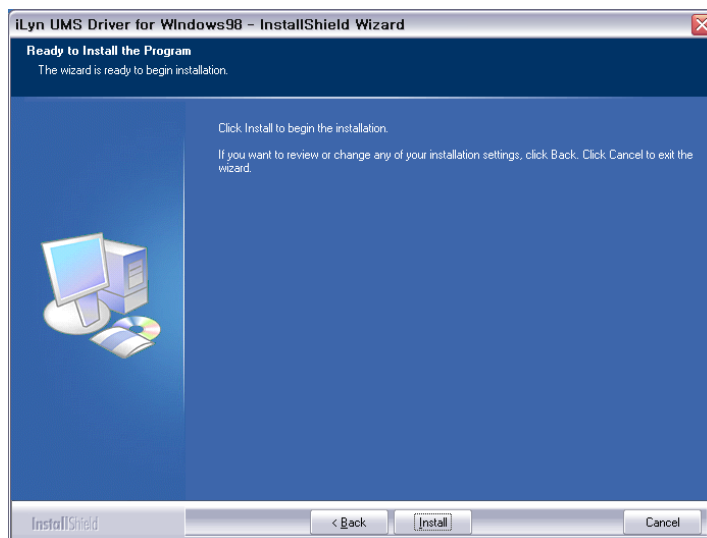
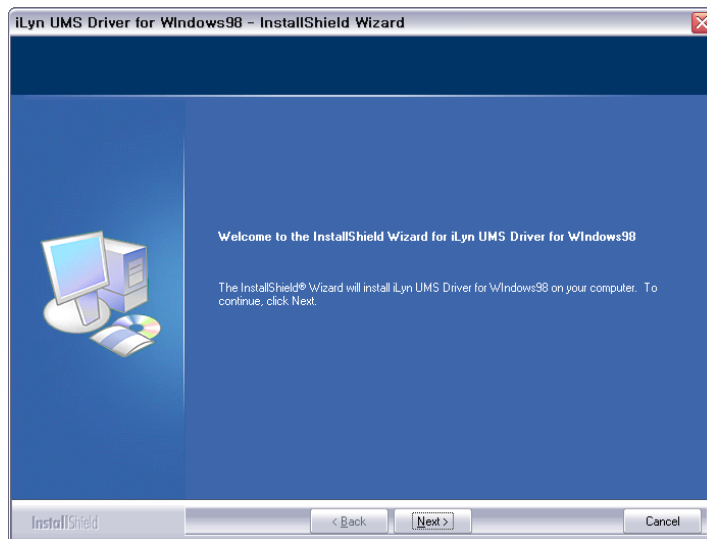
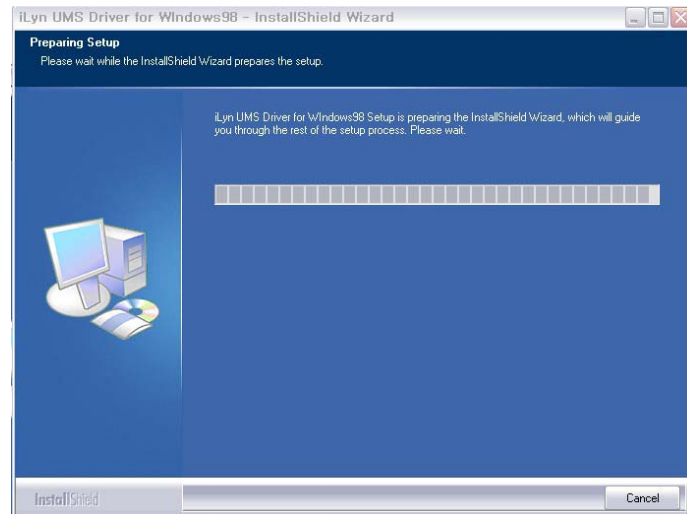
- . Install WIN98MASS software as following , which is included in the install CD.

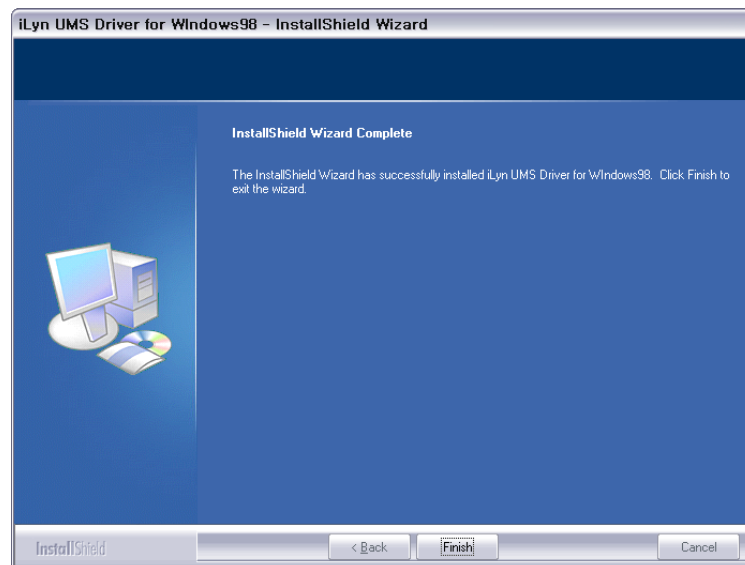
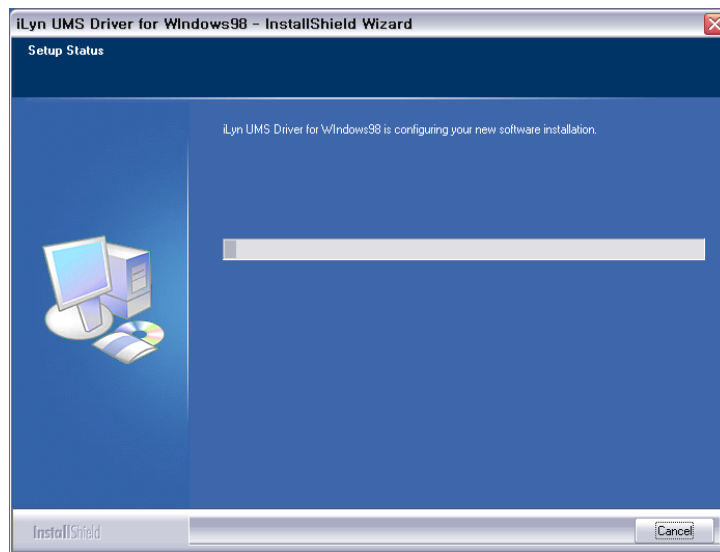
- ◆ When you don't have install CD, you can download WIN98MASS.ZIP file from www.iLyn.co.kr archive.



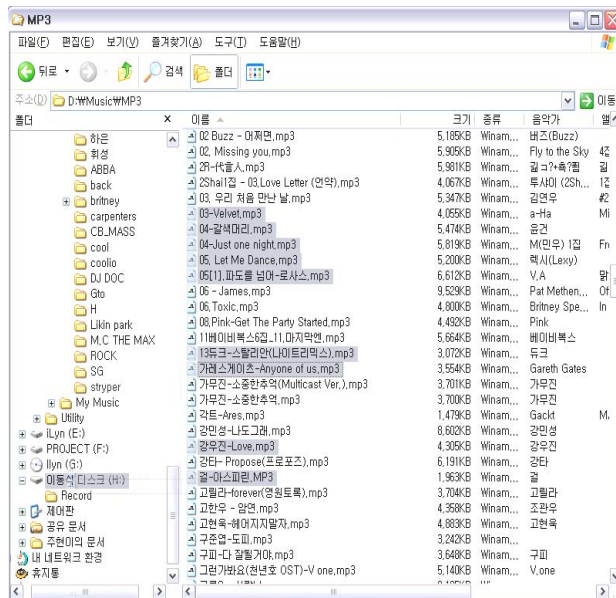
1. From iLyn Explorer CD double-click the WIN98MASS folder and run SETUP file.

- After you click OK button, the computer will be restarted and Window 98 Drivers installation will be finished.





□ Portable Disk Usage



– File Download and Upload

1. Connect MP3 Player's USB cable to the computer.

2. Open 'My Computer' or 'Windows Explorer'.

3. DRAG & DROP the file that you want to download to the portable disk.

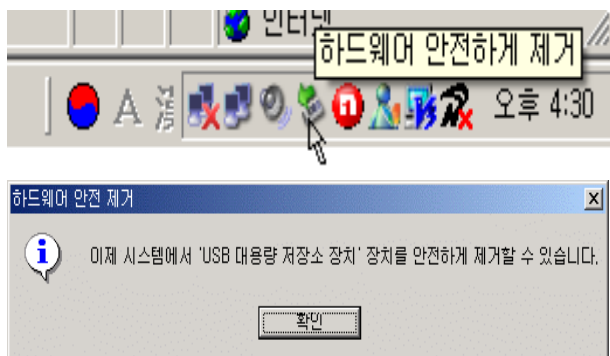
4. It cannot restore the file if you delete from the 'player', so be careful.

♣ Caution : Do not disconnect the USB cable from the computer while it is downloading or uploading the file. It may cause error.

– Disconnecting USB Cable

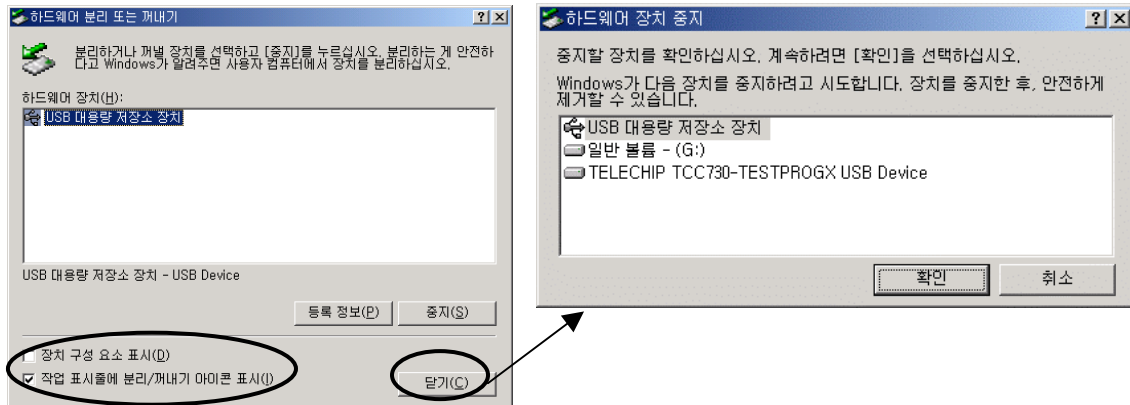
♣ If OS of your computer is ME/2000/XP, you must use the 'Hardware Disconnect or Eject' before you disconnect your MP3 player from the computer. There are two ways of disconnecting the hardware.

First Way)



1-1. Click on the left button of the mouse at the top of "Hardware Disconnection or Eject" icon, the "USB large holding capacity system-Drive(X) Stop" window will show up.

1-2. Click on the message and click the "OK" button and disconnect your MP3 player from the computer.



Second Way

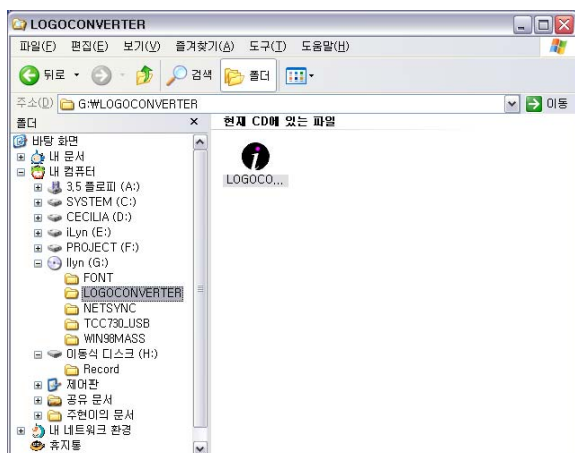
Disconnect your MP3 player just as it is shown in the pictures below.

□ Logo Convert Usage

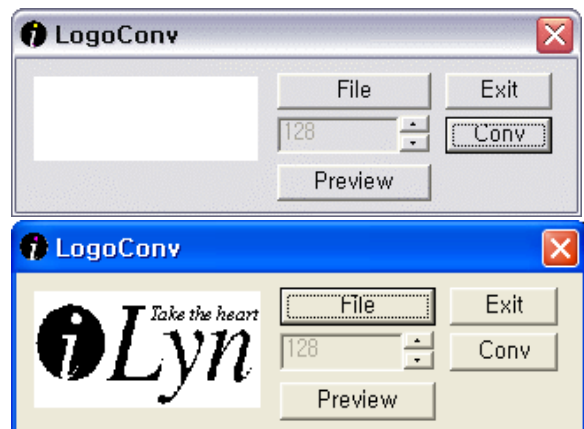


The image should be in 128x64 Pixel, 'Black and White Bit-Map'(.bmp) file.

(In color image case, it automatically changes into black and white, however, we recommend you to edit into black and white in order to get the image that you aspire.)



1. LOGOCONV folder from the CD -> run LOGOCONV.EXE file.



2. Load Image

<User Logo Converting Tool Screen>

Click on the ILYNLOGO.BMP file that you created and click again on the edited Bit-Map file. Then, the chosen image will show up in the window. The display will show color file in color and black and white file in black and white.

3. Change into black and white(Color, if it's in gray scale)

Change color into black and white. Change the THRESHOLD value in the editor box and confirm the image sign that is shown on the screen by clicking on the **PREVIEW** button. Repeat this again in order to get the most suitable image.

THRESHOLD value is 0 to 255.

4. Format Change

Click on the convert button after changing the image the way you want, in order to change the image which the MP3 player can encode. The converted image which has the same image from the original will be formed as "ALG" file.

5. Download

Download the converted image 'ILYNLOGO.ALG' file to the portable disk.

- Be sure name the logo as 'ILNLOGO.ALG'

6. User Logo Setting

Consult the user logo option of 'Added function usage'

* Caution : If you FORMAT or DELETE ALL, it could also delete image file. Therefore, before you format backup the image file.

□ Battery Charge

1. While the computer is on, connect the MP3 player to the USB plug.
 2. While it is on charge, the blue LED on MP3 player will be turned on.
- When it is finished the LED will automatically turns off.
- The charging time is three hours.

III. Basic Operation

1. On/Play

Press the (▶/■) button to turn on the player. Press it again to play.



2. Stop/Off

Press (▶/■) button while playing to stop the music. Press (▶/■) button again to restart. Hold (▶/■) button for several seconds to turn off the power.

Inserting ENDING Screen

◀◀/▶▶ Short click: ◀◀ - Previous track ▶▶ - Next track

◀◀/▶▶ Long click: ◀◀ - Fast Forward ▶▶ - Fast Reverse

- Slide Jog button left /right for a short period while playing to move you to the forward (next) track. If the music has been played for more than 5sec it will play the same track from the start, however, if it was less than 5sec it will play the previous track.

- While playing, press jog button left/right for long to fast forward/reverse.
If you moved to start or end of the track, the player will start the same track from the first.

Adjusting volume

Press \oplus / \ominus button to adjust the volume
from 0 to 40 level.



Holding function

- Appears on the screen when hold is on
- When “Hold” is ON, the buttons on the player will not function
- Utilizing Hold function while playing can be convenient for certain occasion
 - * You can see this screen, while operation the function



Recording

Recording Voice

- ※ When you change mode from voice mode to any other modes refer to mode changing in additional function.



art recording : Press recording button (●) on Music mode or Voice mode to record and the player will automatically change to recording mode.

2. Pause recording : Press Play button (►►) for short to pause recording.

3. Stop recording : Press recording button (●) for long to stop recording and new Voice file will be created.

- It will be recorded as WMA file and saved as V001, V002 ... in sequential order.
- Recording quality will be recorded as bit rate that is determined by MIC or exterior sound source.
- The maximum time of recording can be different by setting up bit rate and the player will automatically stop recording when the maximum time of recording become full.

(refer to page ..)

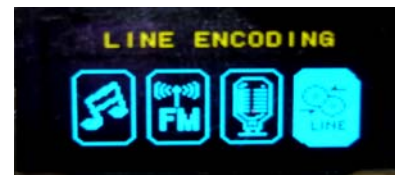
※ Press FM button for long to change mode and listen to music or radio

–Recording from an external audio source

※ When you change mode from line in mode to any other modes refer to mode changing in additional function.

Press FM button for long to change to Line mode.

1. Connect the line in cable to the jack of the player.
2. Connect the line out cable to the jack of the external equipment (CDP, MD, Walkman, audio and etc)



3. Press recording button (●) after playing external equipment to start recording.
4. Listening recorded file : Press FM button to play.
 - Ways of start recording, pausing and stopping are same with voice recording.
 - It will be recorded as WMA file and saved as V001, V002 ... in sequential order.

※ Caution

If Line-In cable gets unplugged while recording the recording will stop. You should adjust your volume before recording for the case, in which the volume of the external equipment is too low (high); the result could end up in a poor quality with low volume.

※ When you want to change FM mode to any other modes, refer to 'mode changing' in additional function section.

4. Recording : Press record button (●) while listening FM radio to record radio.
- Recording FM tuner.



2. Stop recording : Press record button (●) to stop recording

Play button (▶▶) will be on pause.

– The method for starting record, pausing and stopping are same with recording voice.

– It will be recorded as WMA file and saved as V001, V002 ... in sequential order.

Listening Radio

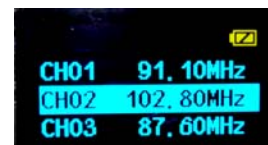
Press FM button in any initial screen display to listen to FM radio and the mode will automatically change to FM mode. (Press FM button again to go back to previous mode.)



1. Preset mode (Automatically finds certain frequencies then saves)

1. While listening to radio, Press Jog button for long to go into to FM SETUP.

2. Press '1. PRESET AUTO SCAN' with Jog button to automatically select station and save them in sequential order.



Search mode (Automatic frequency find and save)

1. Select a station by pushing the jog button (🔍)
left(◀ ◀) or right(▶ ▶).
2. Press Jog button (🔍) for short to save desired station.
2. Press Jog button for short with Jog +,- button to save station at desired number and selected station will be saved at the channel.

◀ ◀ Short click – Decrease by 0.1(0.05)MHz

▶ ▶ Short click – Decrease by 0.1(0.05)MHz

◀ ◀ Long click – Scan to down

▶ ▶ Long click – Scan to up

© FM SCAN frequency intervals

- KOREA/US, JAPAN : 100KHz STEP
- EUROPE/CHINA : 50KHz STEP


2. Listening /deleting saved channels


1. Listening channels: Press Jog button for short on FM mode to bring channel list. Select a desired channel by pressing Jog ▶▶ button to listen to radio.
2. Deleting channels: Press (🔍) button for short while watching channel list saved channel will be deleted


IV. Additional functions

Setting up interval repeat






A. If you press  button while playing music you will see 'A-' mark on the top of the player LCD screen and that point will be the start of interval repeat.

B. If you press  button you will see 'A-B' mark on the top of the player LCD screen and the section until that point will be repeated continuously.


3. Press  button again to cancel interval repeating.





1. Press FM button more than two second while it is on pause, it'll activates the Mode Change screen.

2. Click jog() button shortly after moving to desired mode by using jog button   key. The selected mode(MUSIC, FM, VOICE, LINE) will go abck to initial screen display.

Navigation Using Navigation




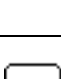
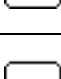
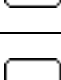
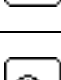
Pressing the jog()button shortly while on pause or on play, you can navigate to the desired file.


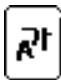

-   : Move to upper folder (Move to previous mode from the highest folder:ROOT)

- ►► : Move to subordinate folder
- + /— : Navigate the file and folder within the same folder
- Play, ►► : Play the selected file




- While on pause or on play, press the jog(🌀) button for while, then the menu will show up.
- Use jog(🌀) ◀◀, ▶▶ in order to select the desired menu.

	1. FM SETUP	Set up FM reception band from each nation and listen to radio.
	2. REC SETUP	(Record Set up) Voice, Line in, Set up FM record
	3. PLAY CONTROL	Enables to control EQ ,Playing time, etc. <Press FM button for a while during playing, then it will automatically move to the PLAY CONTROL.>
	4. ERASE	File/Folder or Delete All
	5. FORMAT	FAST FORMAT / Normal FORMAT Restore to the beginning mode
	6. TIMER	Alarm function (sleep, record, power)
	7. DISPLAY	Clock set up and CONTRAST set up

	8. MEMORY CHECK	Memory capacity check
	09. LANGUAGE	File name, Language selection for the lyrics indication. SVAE FONT : font upgrade
	10. LOGO SELECT	Select user LOGO * extansion(.ALG)

❑ Encoding Setting

1. From menu select '2. REC SETUP'
2. For Recording VOICE, LINE, FM, use +, – key in order to change to desire function and then select with jog() button.



Set recording bit rate



Use +, – key to control.


Select by pressing jog() button.

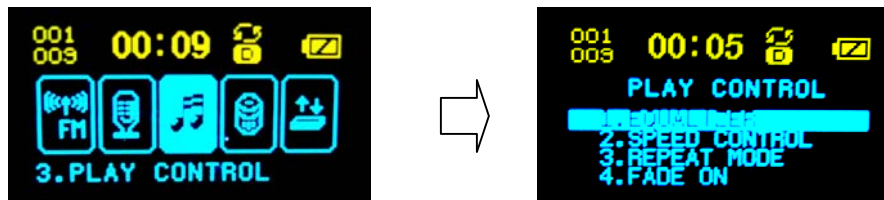
Use ◀◀ key to return to the previous step.

Select between 16Kbps ~ 192Kbps.

※ LINE IN, FM REC BITRATE same as above.

□ Play control setting

1. Select '3. PLAY CONTROL' from the menu.
2. Press jog() button shortly after using +, - key to change EQ, SPEED, REPEAT to desired function.



※ It automatically goes into 'PLAY CONTROL' by pressing FM Button for a while during playing.

EQ Setting



1. EQ SELECT
2. SRS : You can feel the 3D surround sound.
(Sampling Frequency: 32KHz, 44.1KHz, and 48KHz)

- Voice Recording does not support SRS function.

2. TRUBASS(Grandeur Bass Effect)
3. WOW(SRS, TRUBASS Synchronous Effect)
4. USER

Controlling Speed



PLAY SPEED (-80% ~ 0 (NOR)~ 100%) Enables Speed Control, SCROLL SPEED(1~5) Enables Step Control

Set Up Play Mode



ONE(Play one track), RPT ONE(Repeat one track),
DIR ONE(Play one folder), RPT DIR(Repeat folder),
DIR RANDOM(Random folder play), ALL
RANDOM(All Random Play), INTRO(Play first 10sec.
Of the track)

❑Delete/Format File

1. Delete File : Delete file/folder and Delete All file
2. Format : When you want to go back to default setting use FAST
FORMAT or NORMAL FORMAT.
However, upgrade the font after using NORMAL FORMAT since
NORMAL FORMAT deletes the font.

Timer Setting Timer

1. Select '6. TIMER' from the menu.
2. Select jog(⏻) button after using +,- key to change SLEEP,
RECORD, POWER, ALARM into desired function.



1. SLEEP (Power OFF according to the time set)
2. RECORD (Set up the recording time)
3. POWER (Set up the automatic POWER OFF time while on pause)
4. ALARM CONFIG (Radio record Reservation)
5. ALARM ON/OFF (Radio record ON, OFF)
6. WATCH CONFIG (Time Set up)

❑ Setting Display

1. SETUP LCD (CONTRAST Set up and Time Set up)

- CONTRAST(1~10), TIME(5.10.15.20.ON)
- Select jog(⏮) button after using +,- key to set up.
- ◀◀ key does not set up and moves to the previous step.



1. FILE/TAG (File name or set up into ID3 TAGE)



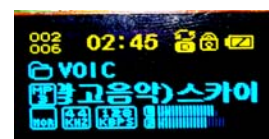
- Name the track with NAME or ID3 TAG
- Choose with jog(⏮) button after using +,- key to set up.
- ◀◀ key does not get set up and returns to previous step.

2. WATCH (Set up clock screen)

DETAIL(Indicates year, month, time, day), SIMPLE(Indicates time), OFF



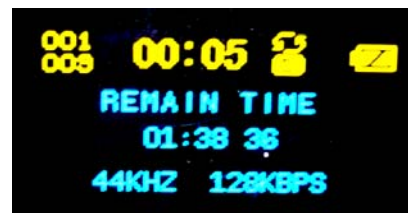
Clock SIMPLE



Clock OFF

❑ Checking memory capacity

1. Remain Memory (check the remaining memory)
2. Remain Rec time (check the possible recording time)



REMAIN MEM – The actual memory size is 128,256MByte, however when you try to search for the available memory, the display will show it less than the actual due to the reduction from the memory used for FAT area and Font.

Language Setting



1. SAVE FONT: click on this when you want to upgrade the font.

<Refer to page... in “advanced section” for Font Upgrade>

☐ User's Logo setting



1. DEFAULT : Basic iLyn picture
2. USER: Choose, user-made, ILYNLOGO.ALG picture

<Refer 'Logo CONVERT section' in page... for making user logo>

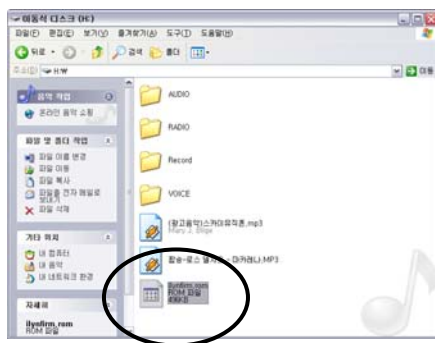
Firmware Upgrade

What is a Firmware? Compared to PC, Firmware is essential part just like Windows O/S(operation system). This was made in order to continue improvement of the product, and to give better

countermeasures for ever-changing environment.

Firmware Upgrade is consistently posted on iLyn Homepage (www.ilyn.co.kr)

How to upgrade the firmware:



i . Download upgraded firmware from the homepage.

ii. While MP3 Player and computer is connected through the USB cable, download firmware upgrade file (iLynfirm.rom) the same way you did for downloading the songs.

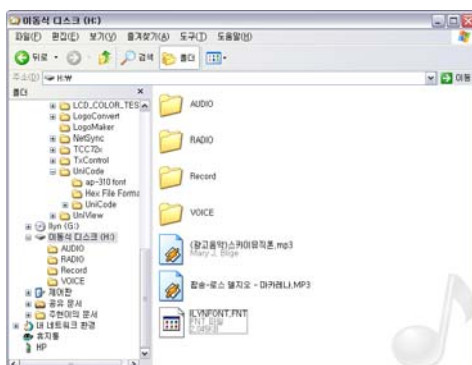
iii. Turn off the power and then on, firmware will get upgraded and then power will automatically get turned off. <Picture is shown>

iv. please format after the update.

v. Firmware upgrade is now completed

- After the format, every data will be deleted so you will need to save files to other system.

Font Upgrade




1. While MP3 Player and computer is being connected, drag Font file(iLynfont.fnt) to Removable disk, the same way you did to download the songs.

**

2. Disconnect USB cable from MP3 Player, then go back to menu.
3. After choosing language, click on Save font, then it will upgrade the font.

Mandatory Format

1. When Upgrading Firmware failed, put the hold on while the power is off.
2. Pressing play key while holding down jog button , the mode will turn into mandatory firmware and the operation will go back to normal.



VII. Customer Service.

Trouble shooting

- Characters in LCD are corrupted.
 - ※ Cause: When font is bronken(smile mark) after downloading songs, this means that the font is deleted.
 - ※ To fix: Upgrade your font. (Refer to ‘how to upgrade the font’)

- No power: Battery trouble, recharge your battery.
- Buttons won't work: check Hold key and then disarm.
- MP3 Files will not download/upload: Check the cable connection.
- Not enough memory: delete unused files
- Does not operate: First, press reset button, and then operate and when it still does not work, refer to 'Mandatory Format'.
- The power will automatically go off: Check if Sleep mode is on from Timer menu.
- Cannot connect to the PC: For Windows 98, install UMS DRIVER then connect.

Other than Windows 98, Reboot your computer then connect, and then follow the directions in 'Computer connection' section.

©. MP3,WMA File, Songs

		128 MB	256 MB	512 MB	1 GB
MP3 File Down		32 songs	64 songs	128 songs	256 songs
WMA File Down		64 songs	128 songs	256 songs	512 songs
Line Recording	Bit Rate- 128	32 songs	64songs	128songs	256songs
	Bit Rate-32	130songs	260songs	520songs	1040songs
Voice Recording	Bit Rate- 128	2:20 Time (Hours)	4:40 Time (Hours)	9:20 Time (Hours)	18:40 Time (Hours)
	Bit Rate-64	4:40 Time (Hours)	9:20 Time (Hours)	18:40 Time (Hours)	37:20 Time (Hours)
	Bit Rate-32	9:20 Time (Hours)	18:40 Time (Hours)	37:20 Time (Hours)	74:40 Time (Hours)
	Bit Rate-16	18:40 Time (Hours)	37:20 Time (Hours)	74:40 Time (Hours)	149:20 Time (Hours)

Guarantee Certification

This equipment has been tested and undergone strict quality management. But if the cause of the trouble was inherent in the equipment, or was due to defection of the initial construction, contact the service center or the store you purchased from and make sure to bring this certificate in order to get repair or get new one for free.

The guarantee period will be initiated from the day of the purchase, so make sure to have your date of your purchase written.

Guarantee details

1. The compensation standard for equipment repair, exchange, refund follows “Customer protection and compensation law’ set by Economy Planning Committee.

2. However, in the cases below, the repair will not be free of charge

A. When the Guarantee period is over.

B. When the damage was caused by user’s carelessness due to not following the cautions written in the operation manual.

C. When the trouble was caused by user’s voluntary internal reconstruction.

D. When the damage was caused by a natural disaster such as fire, sea wind, earthquake.

E. When the repair is needed, make sure to bring the certificate.

4. Since we do not reissue your certificate, so keep it in a safe place.

5. This certificate is valid only domestically

THIS DEVICE COMPLIES WITH PART 15 OF THE FCC RULES. OPERATION IS SUBJECT TO THE FOLLOWING TWO CONDITIONS: (1) THIS DEVICE MAY NOT CAUSE HARMFUL INTERFERENCE, AND (2) THIS DEVICE MUST ACCEPT ANY INTERFERENCE RECEIVED, INCLUDING INTERFERENCE THAT MAY CAUSE UNDESIRE OPERATION.

FCC RF INTERFERENCE STATEMENT

Note: This equipment has been tested and found to comply with the limits for a Class B digital device, pursuant to part 15 of the FCC Rules. These limits are designed to provide reasonable protection against harmful interference radiate radio frequency energy and, if not installed and used in accordance with the instructions, may cause harmful interference to radio communications. However, there is no guarantee that interference will not occur in a particular installation.

If this equipment does cause harmful interference to radio or television reception, which can be determined by turning the equipment off and on, the user is encouraged to try to correct the interference by one or more of the following measures:

- ▶ Reorient or relocate the receiving antenna.
- ▶ Increase the separation between the equipment and receiver.
- ▶ Connect the equipment into an outlet on a circuit different from that to which the receiver is connected.
- ▶ Consult the dealer or an experienced radio/TV technician for help.

● Caution()

- Do not change or modify the product without permission or authority of manufacturer. It may cause undesirable operations, permanent damages or harmful interferences.

● Notice()

- Design and specification are subject to change without notice for product improvement purposes.

Product name:

Warranty period : 1year

Model name :

The date of purchase :

(Y)

(M)

(D)

AS Information

Distributor : Name of Company :

Phone:

customer service center: Tel : 82-31-940-6976

Fax : 82-31-940 - 6922

Address :

Person in charge:

customer service address

Customer : Name :

Address :

[413-850] 678-7, Changmanli, Gwangtanmyun, Paju-si, Gyunggi-do

Sodif E&T Co., Ltd.

Home page

<http://www.ilyn.co.kr>