

USER' S MANUAL

AP-200

SODIFF E&T Co., Ltd.

THIS DEVICE COMPLIES WITH PART 15 OF THE FCC RULES. OPERATION IS SUBJECT TO THE FOLLOWING TWO CONDITIONS: (1) THIS DEVICE MAY NOT CAUSE HARMFUL INTERFERENCE, AND (2) THIS DEVICE MUST ACCEPT ANY INTERFERENCE RECEIVED, INCLUDING INTERFERENCE THAT MAY CAUSE UNDESIRE OPERATION.

FCC RF INTERFERENCE STATEMENT

Note: This equipment has been tested and found to comply with the limits for a Class B digital device, pursuant to part 15 of the FCC Rules. These limits are designed to provide reasonable protection against harmful interference in a residential installation. This equipment generates, uses and can radiate radio frequency energy and, if not installed and used in accordance with the instructions, may cause harmful interference to radio communications. However, there is no guarantee that interference will not occur in a particular installation.

If this equipment does cause harmful interference to radio or television reception, which can be determined by turning the equipment off and on, the user is encouraged to try to correct the interference by one or more of the following measures:

- Reorient or relocate the receiving antenna.
- Increase the separation between the equipment and receiver.
- Connect the equipment into an outlet on a circuit different from that to which the receiver is connected.
- Consult the dealer or an experienced radio/TV technician for help.

Ⓢ Caution (△)

Do not change or modify the product without permission or authority of manufacturer. It may cause undesirable operations, permanent damages or harmful interferences.

Ⓢ Notice (✎)

• Design and specification are subject to change without notice for product improvement purposes.



User Manual

Model : AP-200 Series

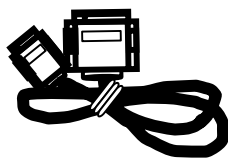
Introduction!!

Thank you for purchasing our compact digital audio player iLyn!!!
iLyn's digital audio players are designed and manufactured to meet the international quality standards. These products undergo humidity, impact, dust, vibration, and drop tests to assure high quality. Thank you once again for purchasing the AP-200 and we hope that you'll be satisfied with the superior quality of AP-200.

SODIFF E&T reserves the copyrights to the product manual, pictures, and software. These cannot be used or redistributed in any forms without a prior written approval from SODIFF E&T. Violating copyrights law will result in legal actions.

- Contents of this manual and the products specification may change without prior notices.

☐ Components



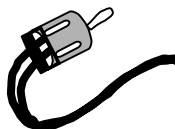
USB CABLE



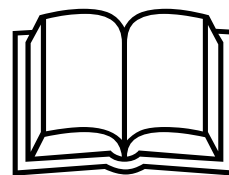
Install CD



AAA Battery



Portable necklace
w/ earphone



Manual



AUDIO CABLE

Introduction	i
Components	ii
Table of Contents	iii
Product Features	
View	
Turning iLyn On/Off	
Connecting to Computer	
File Copy, Transfer, Delete	
Disconnecting from Computer.....	
Selecting Mode	
Playback	
Section Repeat	
PLAY MENU	
FM Transmit.....	
FM Radio	
Presetting FM Radio Frequency	
Warning	
Troubleshooting	
Product Specification for iLyn	
Product Warranty	

❑ Product Features

–. MP3, WMA music file playback and lyrics function (LRC TYPE)

This MP3 player can store and play typical MP3 files as well as Microsoft Window Media Audio files. It also has lyrics function.

–. FM RADIO / Direct Recording

This product is equipped with functions that are available only on high-end models such as FM radio tuner, FM digital recording, and recording of the output from all analog audio into MP3 files without a PC.

–. Play & Plug

This product can store any type of data without having to install a separate program (except on Win98).

–. Built-in Equalizer

5 preset equalizers to choose from during playback (Normal, Rock, Pop, Live, Classic).

–. Voice Recording

You can save/transfer up to 38 hours (128MB memory) of high quality voice recording in mp3 format.

–. Playback

You can select such playback functions like “One”, “All One”, “All RPT”, “Random”, “Intro”, “A-B” playback to listen to your MP3 and/or WMA files.

–. Folder (Can Create Unlimited Number of Folders)

MP3, WMA, REC are stored in folders for easier access and organization.

–. Language Support

The MP3 player supports Korean, English, Traditional Chinese, and Simplified Chinese fonts so that the title and lyrics of the music can be displayed on the screen. Other languages are also supported with different firmware upgrades.

–. Graphic LCD and 3 COLOR LED BACKLIGHT

With its graphic LCD display, the fonts appear very clearly and the 3 Color Led Backlight also enhances the MP3 player's appearance.

–. Adjusting Playback Speed

7 levels of playback speed (normal, fast, and slow) for listening to lyrics and for language studies. You can also fast forward or rewind the track you're listening to by pushing the Jog Button left and right.

–. VAD(Voice Activity Detection) Recording Function

To maximize memory efficiency, this function automatically records only when there's an audible voice.

–. Firmware Upgrade

Firmware downloads are available for an easy upgrade of this product.

–. Bookmark (Resume)

If the power is turned off during playback, the iLyn will play the same file it was playing before when it's turned back on.

–. Delete Files (Folder)

You can select and delete a file or a folder, or use the format function to delete everything.

–. **Alarm Functions**

You can designate music or a voice recording to be played for a set period of time (0~180 minutes)

–. **Memory Status**

The status of the memory is displayed to inform you of how much more voice recording and/or mp3 can be saved.

–. **NetSync**

Use this function when studying foreign languages.

–. **FM Transmitter**

Transmit MP3 files and Mic Input through FM frequency to listen to them in car audio systems.

❑ **View**



❑ Turning ON iLyn

Insert the battery and press the ‘Play’ button for 2 seconds. The backlight will flash and iLyn’s power will be turned on. The initial screen, user logo, and mode selection screen will appear in its respective order when the MP3 player is turned on.



<Initial Screen>



<User Logo>



<Mode Selection Screen>

Use the Jog Button to select the mode from the mode selection screen. When you depress the ‘Play’ button for 2 seconds, the screen below will appear and the MP3 will power off. When iLyn is turned on while it’s not in either playback mode or FM tuner mode, it’ll automatically power off in 30 seconds to reserve battery power.



<Power Off Screen>

❑ Connecting to Computer

Use the cable that was included in iLyn’s package to connect iLyn to your PC. Connect the side with smaller plug to iLyn and the larger plug to your PC. If the connection was made correctly “MASS Connect” message will appear on iLyn and when you open your windows explorer a “removable disk” will appear.

The PC will automatically install necessary drivers when you connect your iLyn to your PC for the first time. After the installation of drivers, when you open the windows explorer, you’ll see that iLyn will be connected to your PC as a removable disk. Please make sure iLyn’s power is turned on when you connect it to a PC.

* WIN98 users must install UMS driver. For detailed instruction on installing UMS driver, please refer to “Installing UMS Driver (Plug & Play) on Windows98” section below.

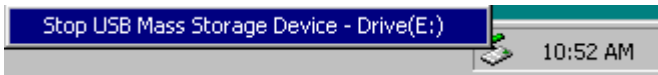
❑ File Copy, Transfer, Delete

Turn the power on and connect the USB cable. iLyn will display a message “MASS Connect” on its screen. This means that iLyn is connected to the PC as a removable disk. You can copy, transfer and delete files to and from iLyn as you would do on your PC. You can also drag & drop your files to iLyn. On Win XP, you can right click on the file in your PC and select the menu “send to removable disk” to send files to iLyn.

✓ Please note that a file that's been deleted cannot be recovered

❑ Disconnecting from PC

♣ If your computer's OS is either Windows ME/2000/XP, you'll have to use the “**Remove or disconnect hardware**” when disconnecting iLyn from your PC. There are two ways to disconnect iLyn from your PC.

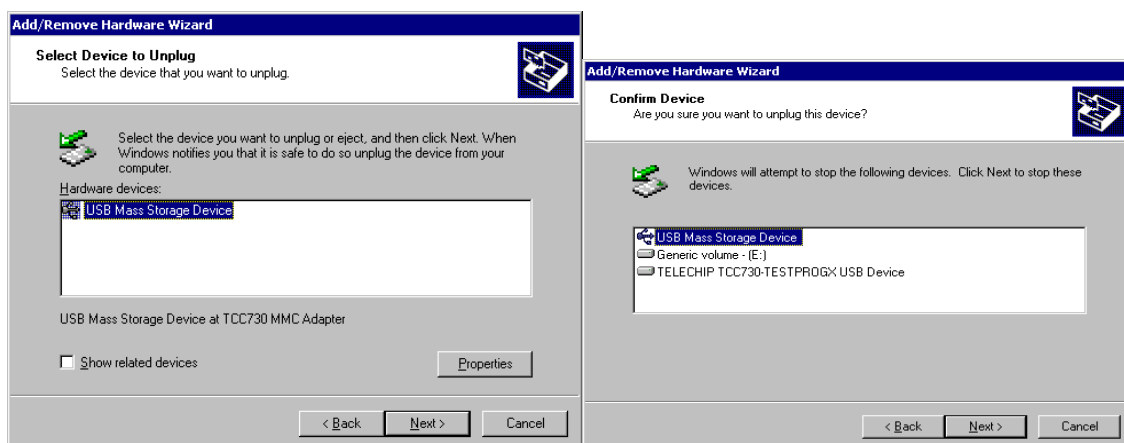


1-1. Move your mouse pointer over the “**Remove or disconnect hardware**” icon in system tray and left click with your mouse. A window will appear that says “**USB 대용량 저장 소 장치 - 드라이브(X) 중지**”

1-2. Click on the message and when the window below appears, click on OK and disconnect iLyn from the PC.



2-1. Move your mouse pointer over the “**Remove or disconnect hardware**” icon in system tray and right click with your mouse and the window below will appear.



2-2 Press “Stop” and press OK on the next window that appears. You can now disconnect iLyn from your PC.

❑ Selecting Mode

1. Press the FM button for 2 seconds and the icons below will appear on the screen.
2. Select the mode by using the Jog Button. The initial screen for the mode selected will be displayed. Please refer to the respective section of the manual for instructions on each mode.



MUSIC



VOICE



DATA

❑ Playback

Press the ▶/■ button for a moment to turn the power on. From the mode selection window, select MUSIC mode and depress the ▶/■ button to play the music.

Depress the ▶/■ button to pause during playback. If the player is paused for 30 seconds, the playback mode will stop and the initial screen will reappear. If the MP3 player is in idle for another 30 seconds, the power will turn off automatically.

You can skip through different files by pushing the Jog Button left/right during playback. For each track, if you push left after the first 5 seconds from the start of the song, the same song will be played again from the start. However, if you push left within 5 seconds from the start of the song, the iLyn will skip back to the previous song.

You can fast forward or rewind through the songs by pushing the Jog Button left or right continually. When you reach the beginning or the end of the song while fast forwarding or rewinding, the song will start from the beginning again.

If you fast-forward or rewind for more than 5 seconds, the fast-forward and/or rewind speed will triple. Which means that if you push >> for more than 5 seconds, the speed of the fast forward will increase by 3 times after the first 5 seconds.

- Short : << – Previous Song >> – Next Song
- Long : << – Rewind >> – Fast Forward

❑ Section Repeat

If you press the R/A-B button during playback, A-B will blink on the lower part of iLyn's LCD screen. This marks the start of the section repeat. When you depress the R/A-B again, the A-B that was blinking on the LCD screen will stop blinking and will remain on and the section between the time when the button was first pressed and pressed again for the second time will be played.

When you press the R/A-B button again, for the third time, the A-B icon in the LCD screen will disappear and will disable the Section Repeat function. iLyn will be switched back to normal playback mode.

❑ PLAY MENU

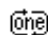
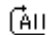
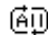

When you press the Jog Button during playback, you can access the PLAY MODE MENU.

You can toggle Speed, EQ, and Repeat from this menu.

- SPEED : Normal, Fast, Slow 1 ~ 5
- EQUALIZER : Normal, Classic, Live, Pop, Rock

- REPEAT : One, All One, All RPT, Random, Intro

◎ RPT(Repeat)

-  One : Repeat a single song.
-  All One : Repeat all the songs once.
-  All RPT : Repeat all the songs continually without stopping.
-  Random : Play all the songs once randomly.
- Int Intro : Play the first 10 seconds of all the songs..

□ FM Transmitter

Press the Jog Button for a moment to access the FM Transmit mode. Below the PLAY screen, “TX Freq : 88.1MHz” will appear. If you try tuning a FM radio near by to 88.1MHz, you’ll hear the song that’s being played from the MP3 player. You can change the transmitting frequency by pushing the Jog Button up(+) and down(-). When you change the transmitting frequency, you have to change the frequency on the radio also.

You can press the Jog Button again to exit from the FM Transmit mode.

- Transmitting Frequency: 88.1, 88.3, 88.5, 88.7, 88.9MHz.

□ Listening to FM Radio

From the initial screen of each mode, you can press the FM button to change to FM Radio mode. You can press the FM button again to change back to the previous mode.

To change the FM frequency, push the Jog Button left(<<) and right (>>). If you push the Jog Button shortly, the frequency will change by 0.1(0.05)MHz. If you push the Jog Button for a moment, it’ll scan to the next strong frequency.

- Short : << – Decrease by 0.1(0.05) >> – Increase by 0.1(0.05)MHz
- Long : << – Scan down >> – Scan up

◎ FM SCAN Frequency Interval Description

- KOREA/US, JAPAN : 100KHz STEP
- EUROPE/CHINA : 50KHz STEP

□ Presetting FM Radio Frequency

While you’re listening to FM radio, press the Jog Button and “CH SAVE ESC” message will appear on the top portion of the LCD screen. Select “SAVE” and press the Jog Button. “CH1 SAVE?NoUse” will appear on the lower portion of the screen. When it says “NoUse”, it means that this channel is empty. Press the Jog Button one more time to save the current frequency. You can change the channel by pushing the Jog Button up and down. You can save up to 10 preset channels.

□ Loading Saved Frequency

While listening to FM radio, press the Jog Button. A message that says “CH SAVE ESC” will appear on the top portion of the LCD screen. Select “CH”. If the frequency you’re listening to has been saved beforehand, the Channel number will be displayed.

However, if the frequency that you are listening to has not been saved before “CH1” will appear on the screen. You can use the Jog Button to search through different channels. The channels that have a saved frequency will tune into designated frequency. However if the channel is empty, then the frequency that you were listening to before will load instead.

When you have selected the channel you wish to listen to, depress the Jog Button to confirm that you want to listen to the current channel. If you do not press the Jog Button after selecting the channel, the frequency will automatically change to the frequency you were listening to before after a little while.

❑ Recording

Press the “R/A–B” button to record. One thing you must remember is that if the mode is set to MUSIC, DATA mode and if iLyn is not in playback mode, the recording quality may differ according to MIC and the source of the sound and its bit rate. (Refer to Setup Menu).

If you press the “R/A–B” button in FM mode, iLyn will record the FM radio broadcast.

❑ Recording FM Broadcast

If you press the “R/A–B” button in FM mode, iLyn will record the FM radio broadcast.

Press the “R/A–B” button again to stop recording.





❑ Listening to Recorded Files

From the Mode Selection screen, choose “VOICE” mode and press the “PLAY” button to listen to the last recording you’ve made.

Play menus and all the buttons will work same as when you were playing MP3 music file. (Playback, Section Repeat, Refer to Play menu).











❑ Main Menu

After turning the power on, press the Jog Button for a moment to access the Main Menu.

 FM RADIO	Save new frequency or listen to saved frequency. Press the Jog Button on an empty channel or a saved channel to switch to radio mode.
 SETUP	Configuration for record, delete, alarm, memory check, LCD, setup, language and various other functions. (Refer to Setup Menu)
 USB CONNECT	For FONT DOWNLOAD & FIRMWARE UPGRADE
 EXIT	Exit from Menu.

Setup Menu

From the main folder press the Set-UP button to choose and configure the following.

 REC SETUP	MUSIC SOURCE	AUDIO, MIC	Recording source input		
	MPEG MODE	MP3, TVF	Recording format		
	BITRATE	8,16,32,64,128,256KBPS	Recording bit rate		
	VAD	ON,OFF	Only record when the voice is audible.		
	SYNC	OFF,SYNC ON, 1SYNC ON	Record each song separately.		
	SILENCE	LOW, MIDDLE, HIGH	Setup audible level for VAD mode.		
 ERASE	SELECTED		Delete a file or a folder		
	ALL		Delete All		
 FORMAT	FAST , LOW				
 TIMER	SLEEP, RECORD				
 MEMORY CHECK	Remain Mem,		Check remaining memory		
	rectime		Check remaining recording time.		
 BOOKMARK	On/off		Restart listening from the point you were listening to before last power off.		
 LCD SETUP	Backlight	On/off	LCD backlight on/off configuration		
	Lcd contrast	0 ~ 20	LCD contrast configuration		
	Light clolr	orange,blue,white	LCD backlight color		
 FM BAND SELECT	Korea/us, eu/chian,japan		FM Band Selection		
				Band	STEP
			KOREA/US	87.5~108MHz	100KHz
			EUROPE/CHIMA	87.5~108 MHz	50KHz
			JAPAN	76~108 MHz	100KHz
 LANGUAGE	Korean, English,...		Select language for displaying file name and lyrics		
 BACK			Return to Main Menu		

(Definitions)

- **Sync** : Automatically separates each recording(song) when recording through audio jack.
Sync ON : Record all the songs according to each track.
1Sync ON : Record only the first song.
OFF : Record all songs into a single file.
- **VAD** : (Voice Activate Detection) : Detects human voice and only records when the voice is audible.
- **Book Mark(Resume)** : Restart playing from the point where you previously stopped listening.


ERASE – When you select “ERASE” a folder, along with the file, will be displayed. Select either a folder or a file and depress the Jog Button. Confirm “YES” on the screen to delete the file or folder.

For browsing through folders, >> button will open the subdirectory in the folder. << will move you back to the upper folder.

- * << : Move to the upper folder >> : Move to sub folder
- * + : Move up the list - : Move down the list
- Press - Delete

REMAIN MEM – The actual memory are 128 & 256Mbyte but when you use this function to check the remaining memory, the remaining memory will appear a little bit smaller than this. This memory is reserved for FAT and fonts.

© Hold Function

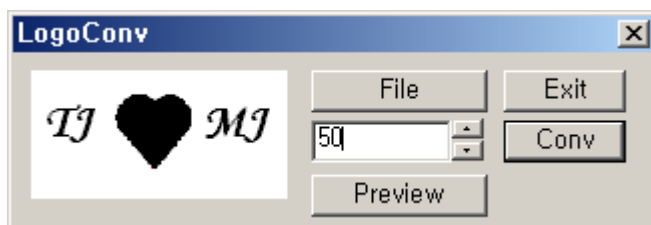
- 1) When you enable the “HOLD” button, all the buttons will be locked and will not work.
- 2)  is displayed on the LCD screen and all the keys will stop working.
- 3) Slide the “HOLD” button up to disable this function.

❏ Using Custom Logo

iLyn AP-200 supports user logo. Please download LOGOCONV.ZIP file from iLyn homepage to use the user logo.

- Editing User Logo

You need to edit the picture in order to edit the user logo. Image should be 128X64 pixels, black and white bitmap file. Color files will work, but it'll not show very clearly. We recommend that all the logos be changed to black and white.



<User Logo Converting Tool Screen>

- Opening Image

When you run the LOGOCONV.EXE, there's an image window and file open button. Press the file open button to load the edited bitmap file. The selected file will appear in the image window. The image will appear in black and white or in color.

- Change to Black and White (If Color or Gray scale)

If the image is color, you must change it to black and white. On the edit box, change the value of the THRESHOLD and press the PREVIEW button to check the image that appears on the image window. Keep changing the THRESHOLD value until you get the optimal image. THRESHOLD value ranges from 0 ~ 255.

- Changing Format

After you've edited the image, you must press the "Conv" button to change the file format to a format that's compatible to iLyn. The new image will have the same name with "ALG" at the end.

- Download

Copy the edited image to iLyn. Method for downloading the image is same as downloading MP3.

- Setting the User Logo

* Warning : When you format or choose "DELETE ALL" option, the image file may be deleted too. So, please make sure you've saved the image file on the PC before you format.

❑ Using NetSync (For Products Sold in Korea)

–netsync can be used on the sites listed below.

(1) Educational NetSync service.

EBS : www.EDUmp3.com

다락원 : www.ddnet.co.kr

empas : 외국어>영어, 일본어, 중국어 강좌 (Foreign Language>English, Japanese, Chinese)

<http://ddnet.empas.com/empas/jp/>, <http://ddnet.empas.com/empas/cn/>

NAVER : 교육>외국어>일본어, 중국어 강좌 (Education>Foreign Language> Japanese, Chinese)

<http://edu.naver.com/language/ddnet-jp.asp>, <http://edu.naver.com/language/ddnet-jp.asp>

(2) Music NetSync Service

관당고 : www.ilikepop.com

맥스mp3 : www.maxmp3.co.kr

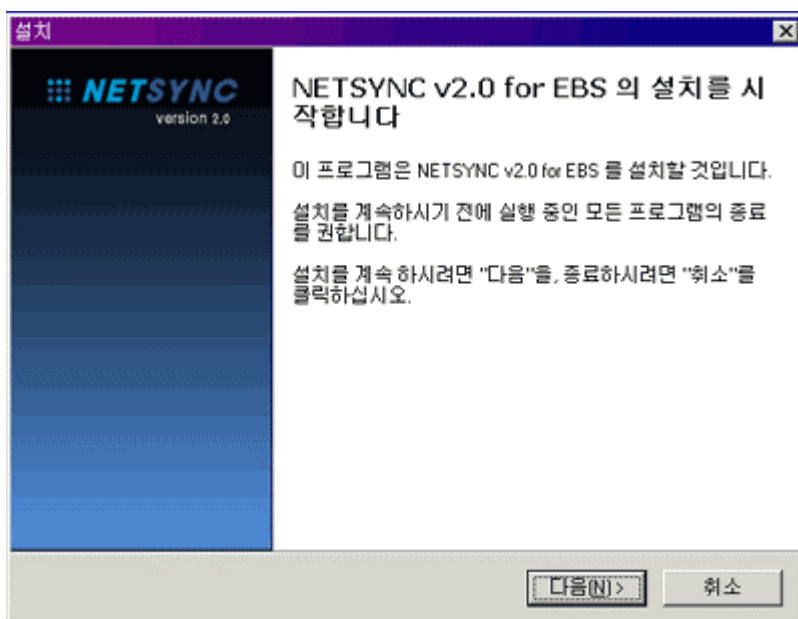
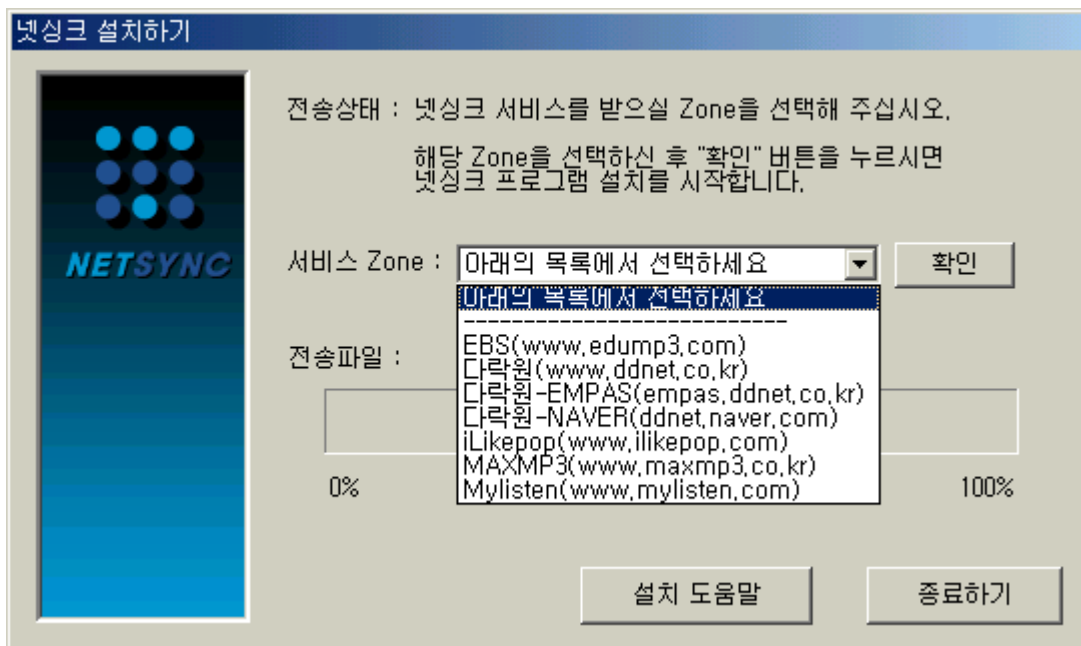
위즈맥스 : www.mylisten.com

예당 : www.clickbox.co.kr

2000mp3 : 2000mp3.co.kr

(1) Installing NetSync

Double click the NSInst_V2.exe from the software CD. The window below will appear. Click on the drop button and select the service zone to begin installing.



<Installation Window >

Press Next. Agree to use the software and the program will install. After installing the program run the NetSync program and log in once.

2)mp3 Player Authentication

Install NetSync on your PC and connect the USB cable. It will automatically detect the MP3 player and create a NED_LIC.SYS file in the internal memory. If this NED_LIC.SYS file does not appear automatically, please contact our service center.

(2)Registering on service zones at www.EDUmp3.com(EBS)

- In order to use the NetSync function from EBS, you must register first at <http://www.EDUmp3.com>.
- Use the ID and Password to log on.

(3) EBS Content Download

<웹상의 콘텐츠 받기>



넷싱크 클릭





로그인 후
콘텐츠선택

https://netsync.ebs.co.kr 아이디와 비밀번호를 입력하세요

아이디

비밀번호

☐ 아이디/비밀번호 저장 ☐ 자동 로그인



파일이름

- ☒ 리스닝스페셜040120
- ☒ 리스닝스페셜040120
- ☒ 초급영어회화040120
- ☒ 모닝스페셜040120
- ☒ 모닝스페셜031122
- ☒ 왕초보영어040120
- ☒ 투데이스매거진040119
- ☒ 초급영어회화040120
- ☒ 초급영어회화040102



싱크하기



취 소



새로고침

(4) Download EBS contents from the PC

<PC파일 다운로드>



넷싱크 클릭





파일담기



파일선택



파일이름

- ☒  주얼리 - Again.mp3
- ☒  주얼리-니가 참 좋아.mp3
- ☒  자전거탄풍경-너에게난나

다운로드



파일선택



폴더선택



다운로드

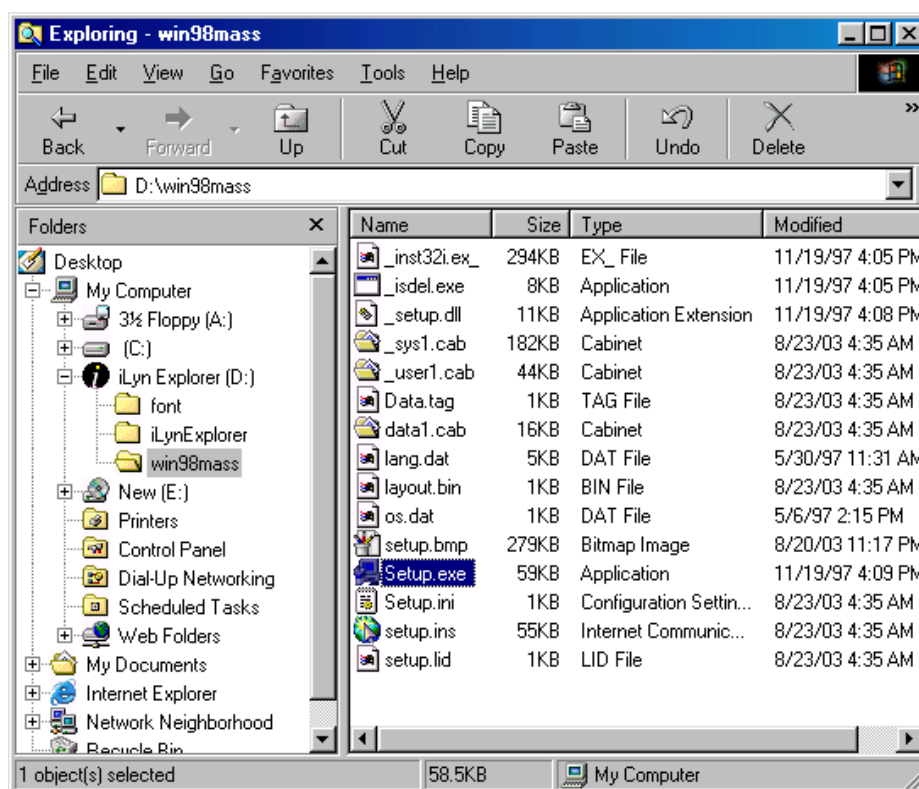
파일담기 에서
파일선택

❑ Installing UMS Driver on Windows 98

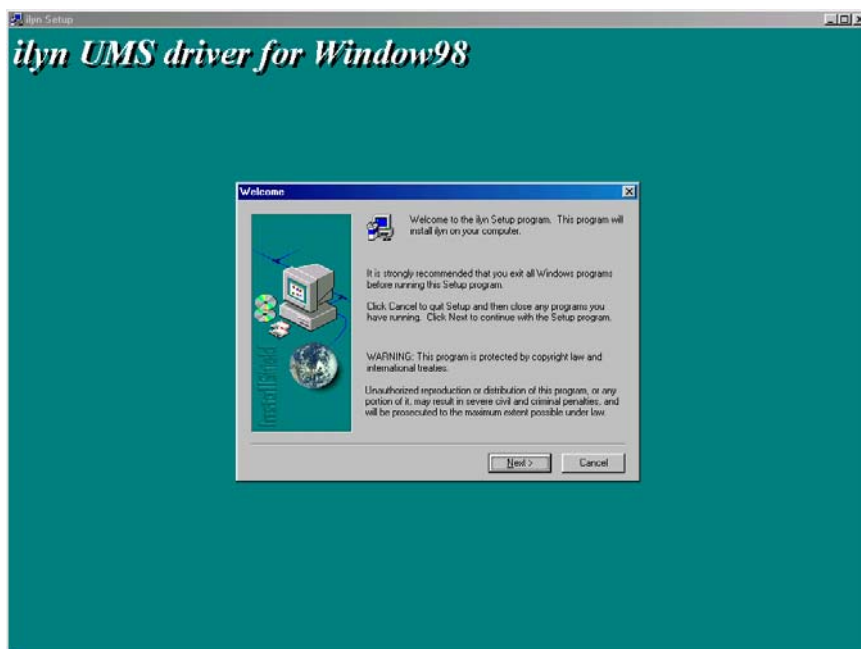
- . WINDOWS 2000/ME/XP will automatically enable its PLUG & PLAY funtion.
- . WINDOWS 98/98SE will require you to install UMS Driver.
- . Install the software in the included CD as follows.

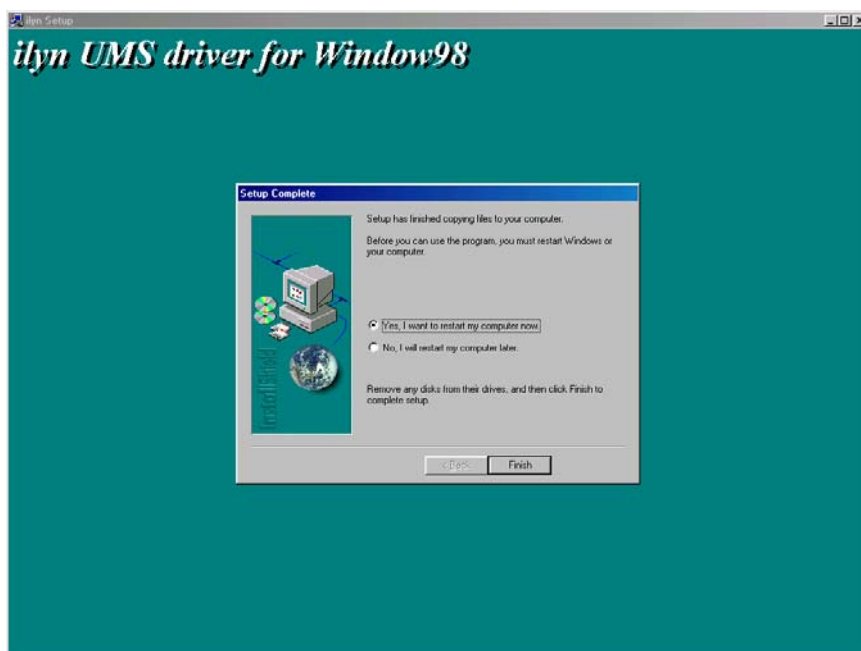
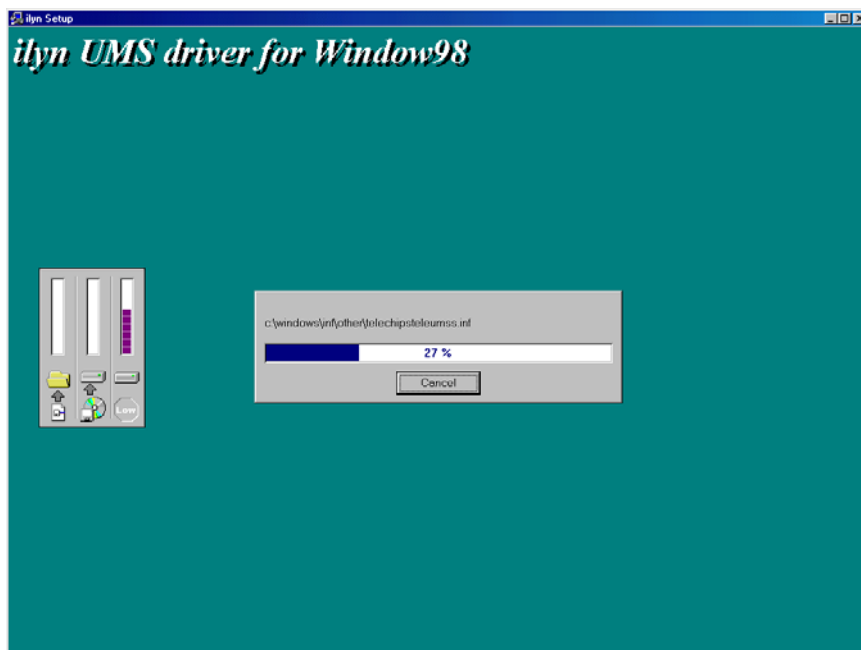
If the CD included in the package does not contain WIN98MASS folder, download WIN98MASS.ZIP from the download section of www.iLyn.co.kr.

1. From the “iLyn Explorer CD”, double click on the WIN98MASS folder and run the SETUP file in the folder.



2. Click “Next” to proceed as follows.

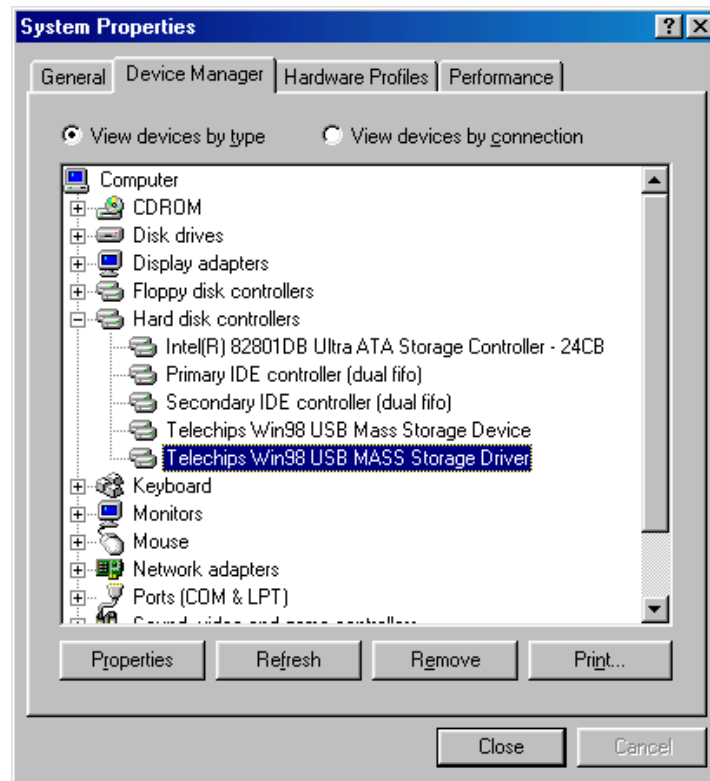




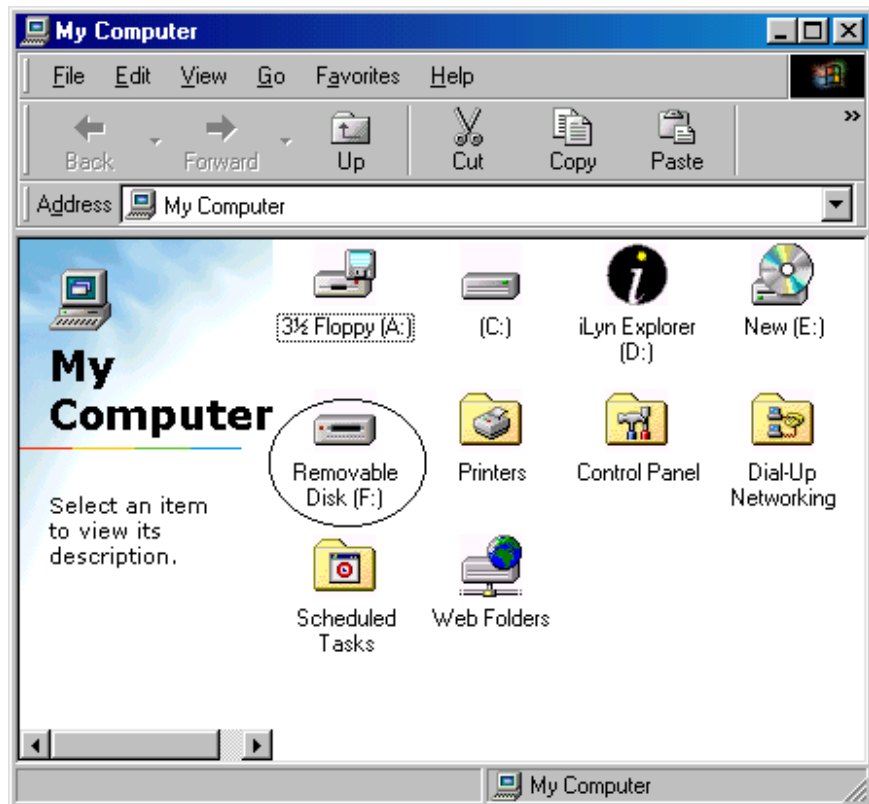
3. Click on FINISH when the installation is completed and restart your computer.

4. After restarting your computer, connect the USB cable to your MP3 Player. It'll automatically install the necessary driver.

Driver can be checked by Control Panel -> System -> Device Manager.



5. If a "Removable Disk" appears on the windows explorer, then the installation has been completed successfully.

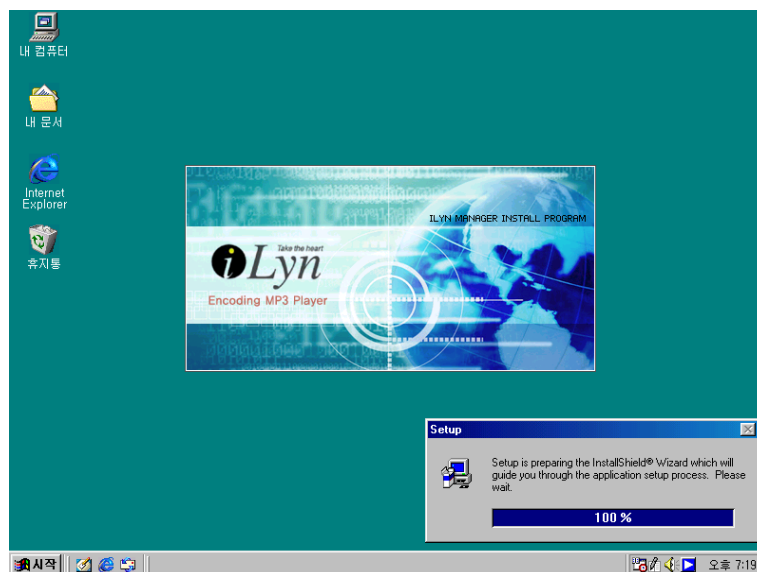


❑ Firmware Upgrade – [Installing iLyn Explorer](#)

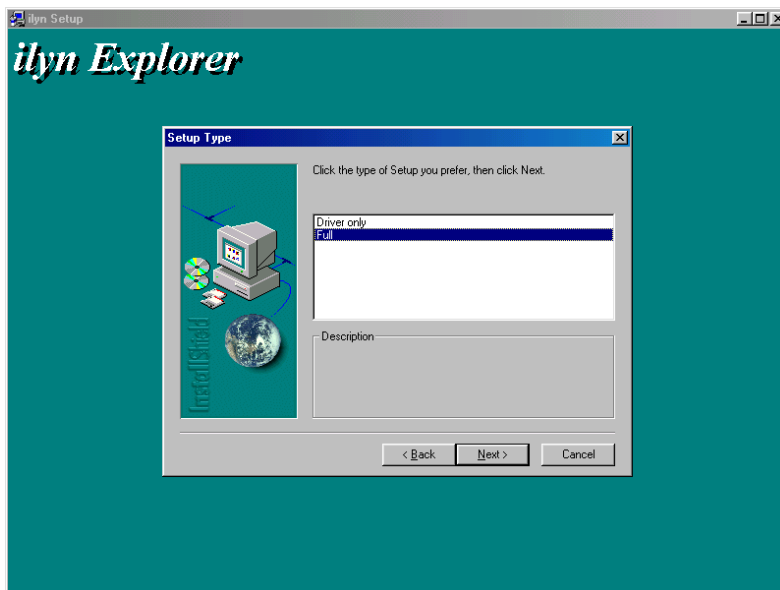
If you have not yet installed the iLyn upgrade firmware driver below, you must install the iLyn explorer in order to update your firmware. Please refer to the next which describes installation processes for drivers and install the driver.

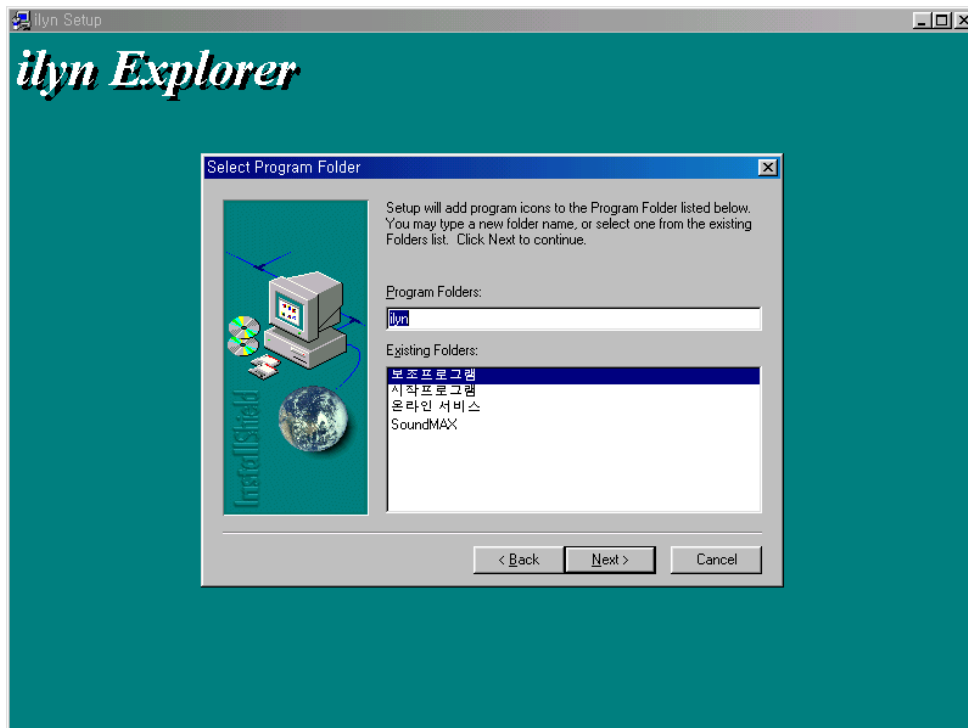
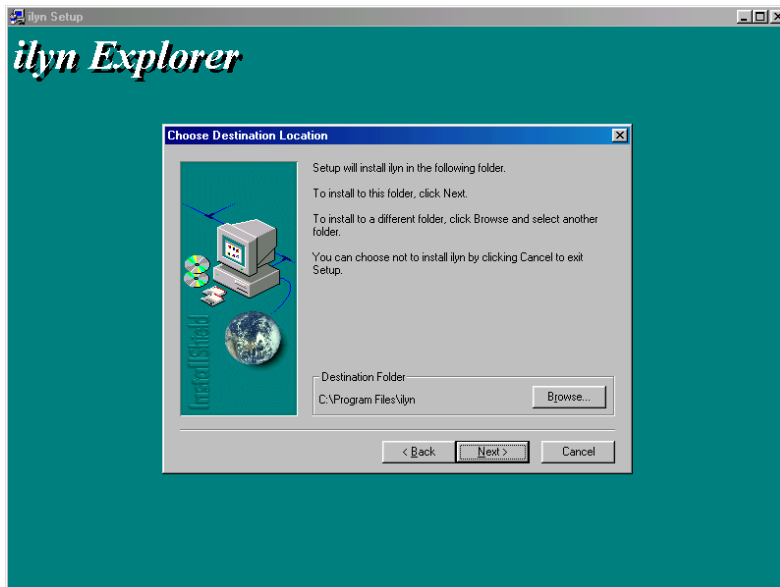
The screen below will appear when you insert the CD into your PC's CD-ROM.

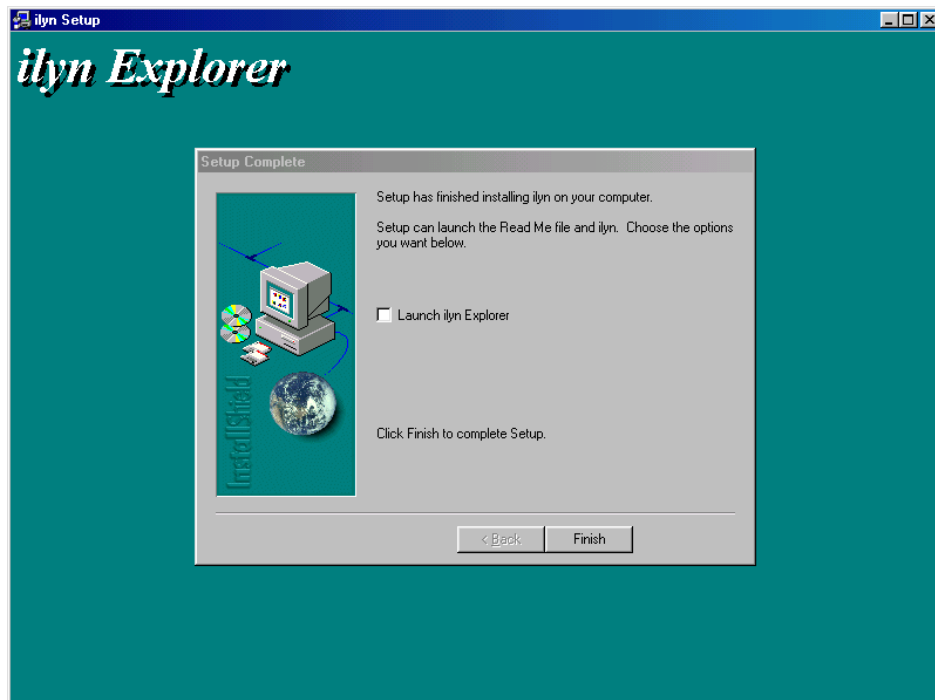
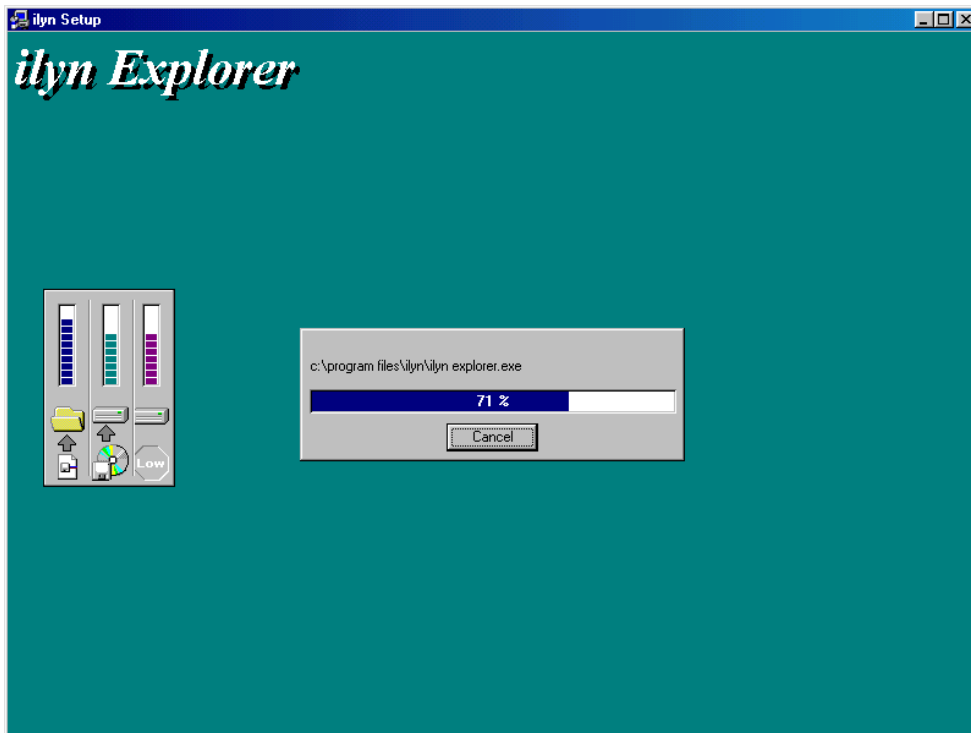
If it the installation does not start automatically, click on “My Computer” → “CD Drive” → iLyn Explorer → Setup.



When the Setup file automatically starts, follow the instructions that appear on the screen and click “Next”.





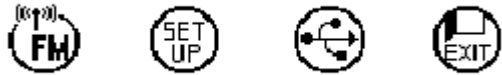


❑ Installing Firmware Upgrade Driver

If the CD that came with your iLyn player does not include a folder named TCC730USB, visit www.ilyn.co.kr and download “tcc730usb.zip” file from the download section.

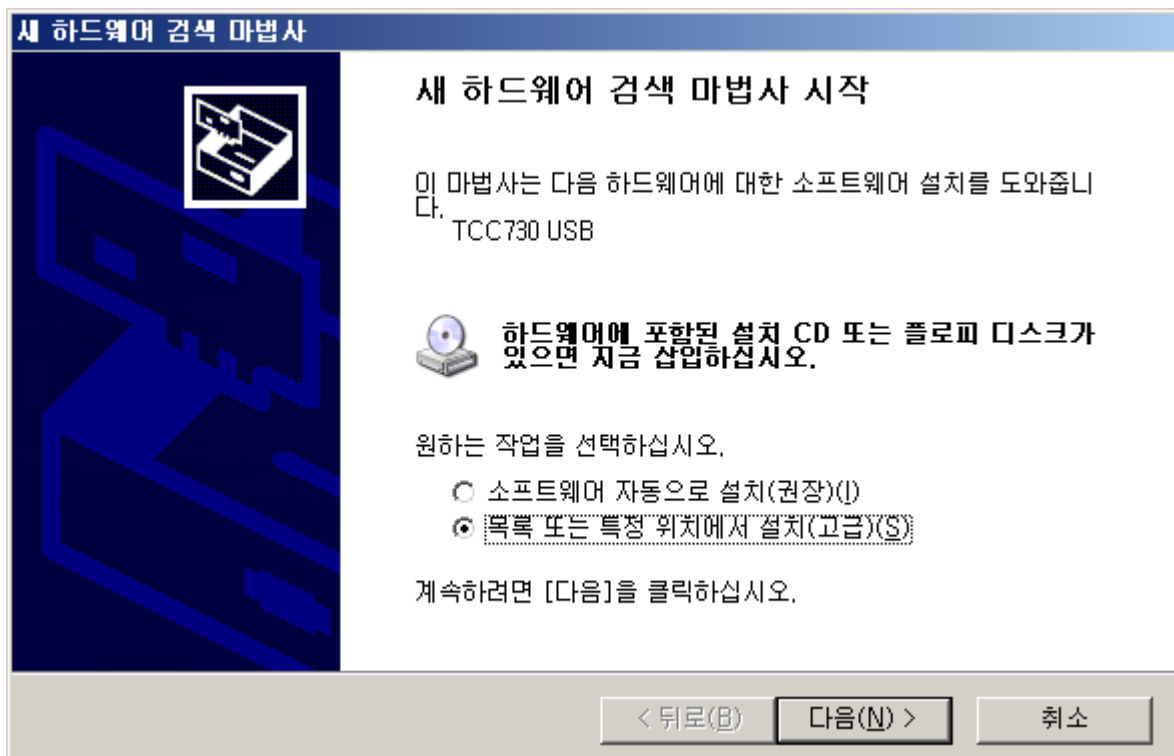
Turn on iLyn and press the Jog Button for a moment when you see the initial screen to access the main menu.

Select USB mode and press the Jog Button.

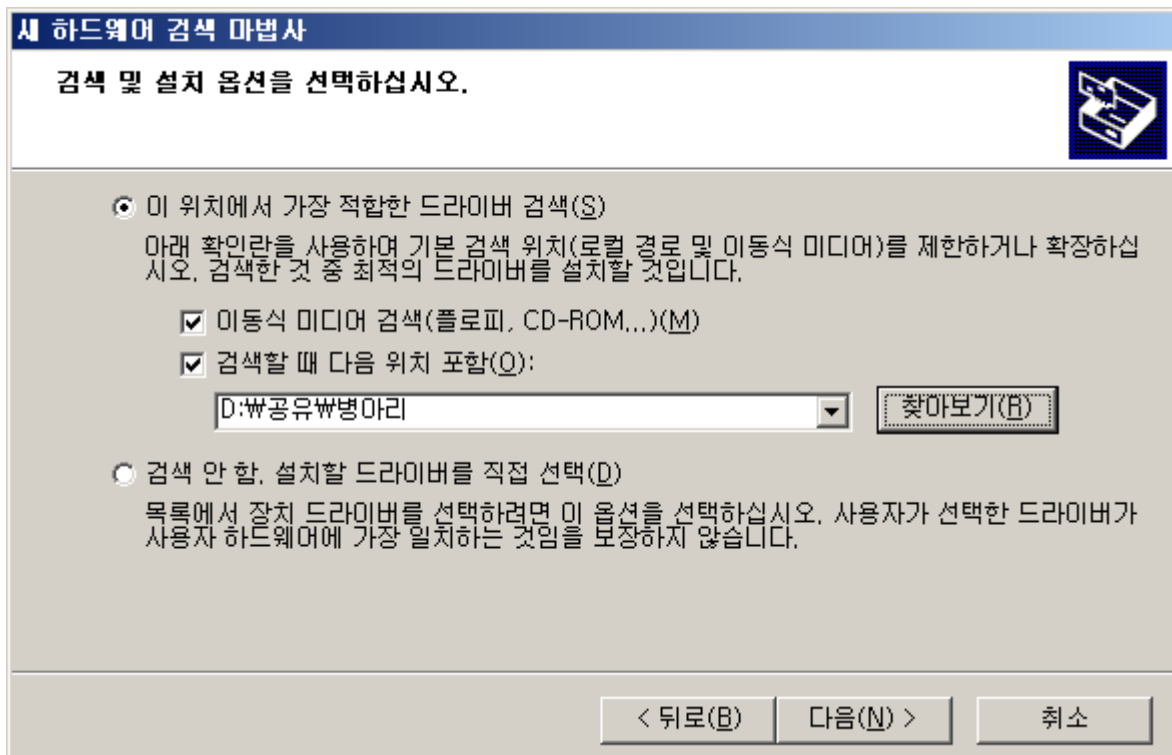


<iLyn Main Menu>

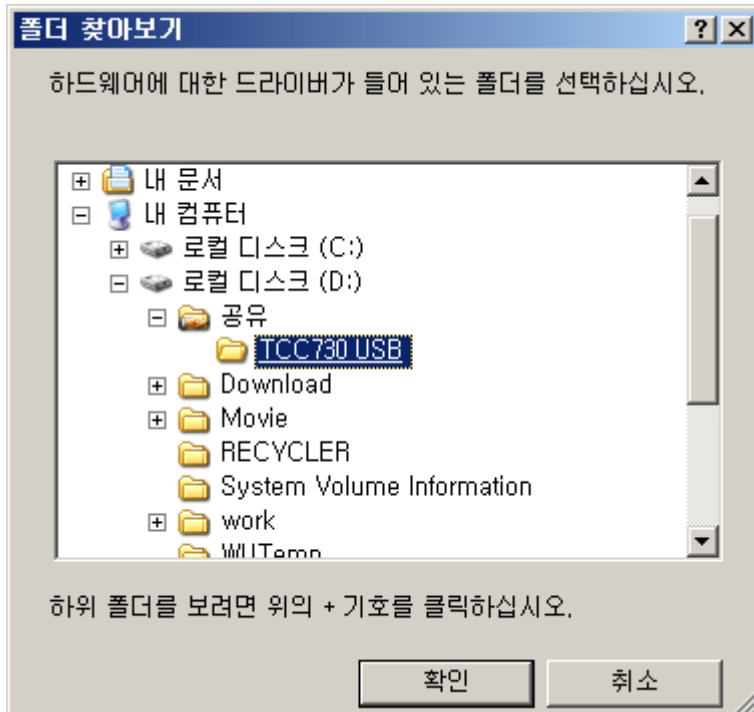
A dialogue box for Installing New Hardware will appear when you connect USB cable to your iLyn player.



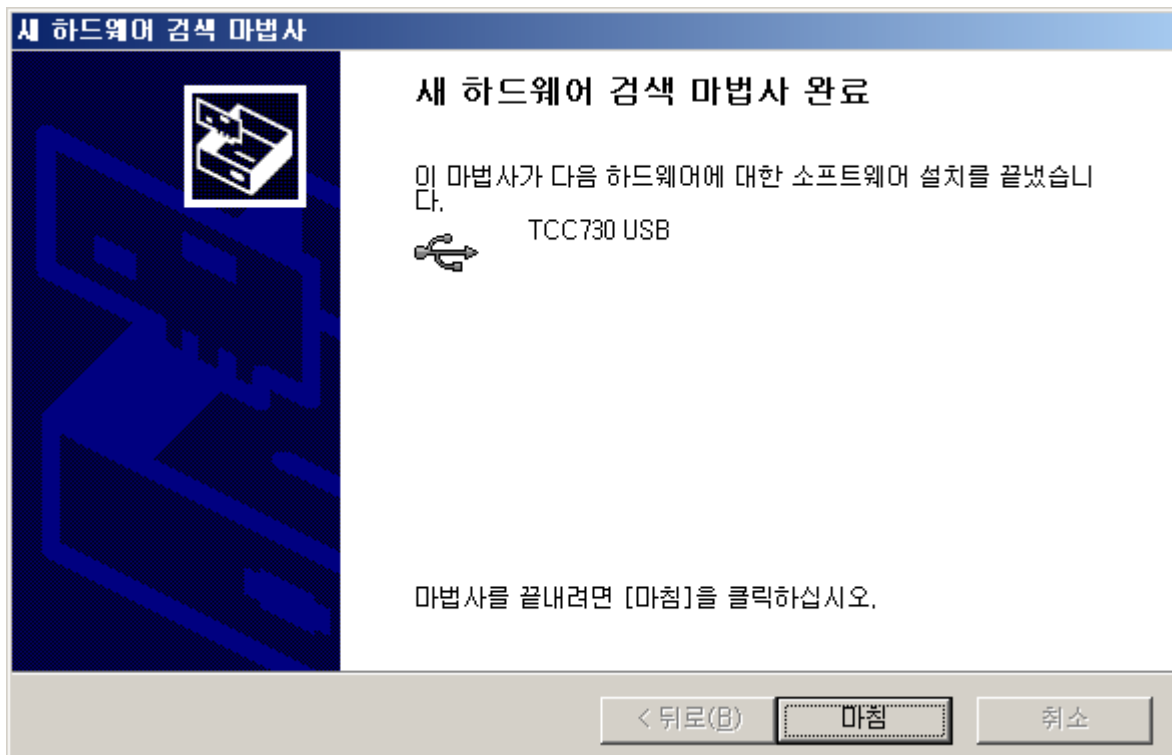
Select “View list or select a specific directory”.



When browsing check the box that says “following location”.



Check the folder that contains the driver. Click “next” from the previous screen. A hardware logo message will appear in a moment. Click “continue”.



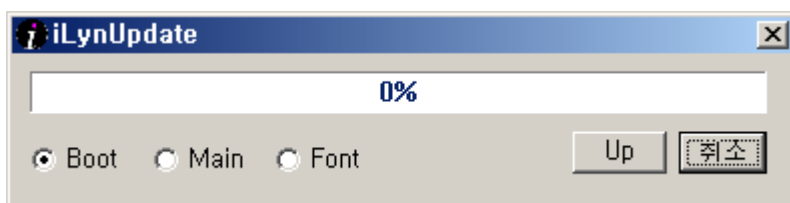
Click “Finish” when the installation is completed.

❑ Firmware Upgrade

Download the iLynUpdate-kormmdd.zip from iLyn’s homepage. (mm:Month, dd:Date)

Update firmwares are available only from iLyn homepage.

Unzip iLynUpdate-kormmdd.zip to extract iLynUpdate-kormmdd.exe file. Run this file and the screen below will appear.



<Initial Screen of iLyn Update>

When you upgrade your firmware, please make sure you backup all your files because they’ll be automatically deleted.

If the USB cable is shaken during upgrade, it may cause problems that might need to be serviced by our service center. Please make sure you place iLyn on the desk or on the floor while updating.

1. BOOT Update

Connect the USB cable to iLyn.

From iLyn's initial screen, select "Boot" and a black circle will appear (Like in the picture)

Press the "Up" button and the status bar will start moving and the upgrade process will begin.

The cancel button is inactive during upgrade.

When the status bar indicates 100% and the cancel button is active again, the BOOT Upgrade has been completed.

When BOOT upgrade is completed, disconnect the USB cable and reconnect it.

2. MAIN Update

From the initial screen above, left click on "Main" and the black circle in front of "Boot" will move in front of "Main".

Press "Up" and the MAIN update will begin like BOOT Update.

When update is completed, remove the USB cable and press the Jog Button for a moment. The images below will appear on the LCD screen.



<iLyn LCD Screen >

Use the Jog Button to select . Press the Jog Button.

Reconnect the USB cable to iLyn at this point.

3. FONT Update

Click on "Font" from the initial screen. Click "Up".

Method is the same.

Disconnect the USB cable from iLyn. The LCD screen will show the above images after a few moments.


4. Formatting

After updating the firmware, please run a "low-level format".

For low-level format, turn on the power and press the Jog Button for a moment to access the LCD screen shown above. Push the Job Button to right to select "SETUP" and press the Jog Button. The screen below will appear.



<iLyn Setup Screen>

From this screen use the Jog Button to select  and press the Jog Button once more. The next menu will display “FAST Format / LOW Format”. Select LOW Format and select “YES” on the next screen to begin formatting.

❑ Forced Upgrade of Firmware

This method is used when upgrading the Firmware has failed due to USB connection problem.

1. Remove the battery from iLyn.
2. Push the Jog Button to << and press the “PLAY” button.
3. Connect USB cable.
4. Upgrade the firmware.
5. The LCD screen will not display anything during upgrade.
6. Keep the Jog Button and PLAY button pressed while the firmware completes its update.

©. MP3,WMA File, Songs

	64MB	128MB	256MB	512MB
MP3 File Down	16 Songs	32	64	128
WMA File Down	32 Songs	64	128	236
Music Recording Bit-128	16 Songs	32	64	128
Music Recordnig Bit-32	60 Songs	130	260	520
Voice Recording Bit-128	1:10 Hours	2:20	4:40	9:20
Voice Recording Bit-32	4:30 Hours	9:30	19	38
Voice Recordina Bit-16	9:30 Hours	19	38	76
Voice Recording Bit-8	19 Hours	38	76	152

❑ Warning

Please store and use the iLyn as directed below.

1. Please refrain from applying strong force on the player. Light impact on the player during walking or jogging is fine, but dropping the player on the ground or applying strong forces with a strong object may cause the player break.
2. Keep the player away from water.
Water may damage the internal components on the player and cause the player to break down.
In case the player is exposed to water, use a dry cloth to wipe the water off and contact your local service center.
3. Storing the Player
iLyn should be stored away from humidity, strong magnetic field, or heat.
4. Low Voltage Warning : Please note that when the battery’s voltage reaches 1.2V (80% Used) the battery icon will blink and the power will automatically turn off.

5. When you are recording something important, select the Set _ UP menu from main folder and select “REC Setup” function. Select “Music Source” and make sure the source is set to “MIC”.
6. When using this player as a portable data-storage device (Word and/or other data files) you can only erase the file when the player is connected to a PC or by formatting.

❑ Troubleshooting

When the fonts do not appear correctly

- When you download music or format iLYn, fonts may appear to be scrambled (smiley face). Open iLyn Explorer and choose “DOWNLOAD” from “TCC730 LCD FONT” which is under “TOOLS” menu. Select and download “Unicode.fot”.

While upgrading firmware, when you connect the iLyn MP3 Player to your PC, the message “USB CONNECT Not Connect” on the screen should change to “USB CONNECT Connected”. If it doesn’t do the following :

First

1. Click on “MY COMPUTER” from Windows desktop.
2. From the “Control Panel”, click on “Add/Remove Program”. Select iLyn Program and press “modify/delete” (This is caused from the crash between the Computer OS and MP3. There is nothing wrong with the product or the program)

Second

1. Click on “MY COMPUTER” from Windows desktop.
 2. From “Control Panel”, click on “My System” and click on “Hardware Manager”.
 3. Check if 범용 직렬 버스 Controller is properly detected.
 4. If it’s not detected, update the hardware driver for the ones that are not detected.
- When the power doesn’t turn on : Check for polarity of the battery and its remaining power.
 - Nothing happens when you press the buttons : Check the “HOLD” key.
 - MP3 Files cannot be uploaded/downloaded : Check the USB cable connection.
 - Not enough memory : Delete unnecessary files.



Product Specification

Model	iLyn AP-200
Memory	Internal Memory 64MB/128MB/256MB/512MB
Voltage	1.5 V
Battery	1 AAA Size Battery
LCD Display	Graphic LCD Letter(128 x64 dot)
Size (W X H X D) / Weight	43 X 80 X 18mm / 35g (Excluding battery)
Case	Plastic
File Transferring Speed	4.5 Mbps
Voice Recording	MPEG 1, 2, 2.5 Layer-3, VAD
Noise Ratio	90dB
Earphone Output	10mW
Output Frequency Range	20Hz ~ 20KHz

Product Warranty

This product has been manufactured under strict quality control and inspections. If the product breaks down during normal usage, our dealer and/or service center will fix the product free of charge for the period listed in the warranty below.

Please record the date of purchase because the free service warranty lasts only for a limited time.

– Warranty

1. Product repair, exchange, and refunds are subject to the “Customer Protection Regulation”.
2. However, in following cases, the repair cost will be bared by the end user.
 - 1) The warranty period has been expired.
 - 2) If the problem was caused by the customer’s misuse.
 - 3) If any internal modification was done by the customer.
 - 4) Problems occurring from such natural calamities as fire, sea wind, flood, and/or earthquake.
3. Please bring this warranty certificate when you require a maintenance.
4. We do not reissue warranty certificate. Please store it in a safe place.
6. This warranty is limited to Korea only.

Product Name	:	Warranty period : 1 Year		
Model Name	:			
Date of Purchase	:	(Year)	(Month)	(Day)
Vendor : Name	:	Tel		:
Address	:	Sales Rep :		
Customer : Name	:	Address :		
	:	Tel :		

- A/S Center
Customer Care Center 031-447-2343 FAX : (031) 447-2342

Informations.
Customer Service
SODIFF E&T CO., LTD. Customer Care Center
Tel : 031-447-2343 Fax : 031-447-2342
Address
An-Yang 6 Dong, 517 Gu-Woo Bldg, Suite 401.
Mahn-An-Ku, An-Yang-Si
Homepage
<http://www.ilyn.co.kr> / <http://www.achom.com>