

USER' S MANUAL

AP-100

ACHOM EP Co., Ltd.

THIS DEVICE COMPLIES WITH PART 15 OF THE FCC RULES. OPERATION IS SUBJECT TO THE FOLLOWING TWO CONDITIONS: (1) THIS DEVICE MAY NOT CAUSE HARMFUL INTERFERENCE, AND (2) THIS DEVICE MUST ACCEPT ANY INTERFERENCE RECEIVED, INCLUDING INTERFERENCE THAT MAY CAUSE UNDESIRE OPERATION.

FCC RF INTERFERENCE STATEMENT

Note: This equipment has been tested and found to comply with the limits for a Class B digital device, pursuant to part 15 of the FCC Rules. These limits are designed to provide reasonable protection against harmful interference in a residential installation. This equipment generates, uses and can radiate radio frequency energy and, if not installed and used in accordance with the instructions, may cause harmful interference to radio communications. However, there is no guarantee that interference will not occur in a particular installation.

If this equipment does cause harmful interference to radio or television reception, which can be determined by turning the equipment off and on, the user is encouraged to try to correct the interference by one or more of the following measures:

- Reorient or relocate the receiving antenna.
- Increase the separation between the equipment and receiver.
- Connect the equipment into an outlet on a circuit different from that to which the receiver is connected.
- Consult the dealer or an experienced radio/TV technician for help.

Ⓢ Caution (△)

Do not change or modify the product without permission or authority of manufacturer. It may cause undesirable operations, permanent damages or harmful interferences.

Ⓢ Notice (✎)

• Design and specification are subject to change without notice for product improvement purposes.



INSTRUCTION MANUAL

MODEL : AP-100

Please read the manual prior to using the product to fully understand all the various function available on this product.

Table of Contents

■ INTRODUCTION

Components	
Parts of the iLyn AP-100	
LCD Display	
Software CD Installation	
DESK Instruction	
*Transferrnig/Saving music files	
*Transferring/Saving music files from PC to iLyn	
*Transferring/Saving music files from iLyn to PC	
*Deleting files/Firmware Upgrade	

■ APPLICATION

MENU 1.....	
MENU 2.....	
MENU 3.....	
MENU 4.....	
Real-time Recording	
Deleting Files.....	
Formatting.....	
Checking Memory	
Using Timer.....	
Adjusting LCD Screen	
Selecting Language.....	
HOLD.....	
Warnings	
Product Specification.....	

Thank you and congratulations on purchasing our compact digital audio player, iLyn!!!

iLyn's digital audio players are designed and manufactured to meet the international quality requirements. The products undergo humidity, impact, dust, vibration, and drop tests to assure high quality.

We are sure that you'll be satisfied with the superior quality of AP-100.

We would like to thank you once more for purchasing the iLyn AP-100!!!

ACHOM EP reserves the copyrights to the product manual, pictures, and software. These cannot be used or redistributed in any forms without a prior written approval from ACHOM EP. Violating copyrights law will result in legal actions.

*Contents of this manual and the products specification may change without prior notices.

Product Features

-. MP3, WMA,ASF music file playback

This player can store and play typical MP3 files as well as Microsoft Window Media Audio files.

-. FM RADIO/RECORDING

FM Radio functions which are only available on high-end mp3 players and FM Radio digital recording!

-. Music Recording

Transforms and saves voice signals of all analog audio into mp3 files.

-. DATA STORAGE

Can be used as a portable data-storage device to move files between one PC to another.

-. Band

5 preset equalizers to choose from during playback (Normal, Rock, Pop, Live, Classic).

-. Voice Recording

38 hours(128MB memory) of high quality voice recording in mp3 format.

-. Playback

You can select such functions like "repeat one song", "repeat all", "random" to while listening to

-. Folder

MP3, WMA, REC are stored in folders for easier access and organization.

-. Language Support and EL BACK LIGHT

The graphic LCD Display supports 35 different languages and Korean ID3 Tags. The EL BACK LIGHT is also available to facilitate controls.

-. Adjusting Playback Speed

7 levels of playback speed (normal, fast, slow) for listening to lyrics and language studies.

-. VAD(Voice Activity Detection) Recording Function

To maximize memory efficiency, this function only records when there's a sound.

-. Firmware Upgrade

Firmware download are available to easily upgrade the functions on this product.

-. Bookmark (Resume)

If the power is turned off during a playback, the player will play the same file when it's turned back on.

-. Play list

You can select your favorite music files and save it into a play list.

-. Sync (net sync)

The track is saved automatically during real-time music recording.

-. Delete Files (Folder)

You can delete a single file or a folder.

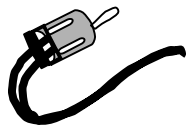
-. Alarm Functions

You can designate music or a voice recording to be played for a set period of time (0~180 minutes)

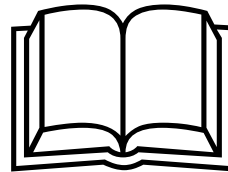
-. Memory Status

The status of the memory is displayed to inform you of how much more voice recording and/or mp3 can be saved.

□ Components



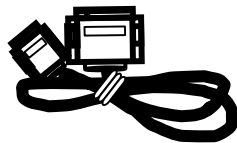
Portable necklace
w/ earphone



Manual



AAA Battery



USB
CABLE



AUDIO CABLE



Install CD



Please verify that the above components are included in the package that you've purchased.

If any of the above item is missing, please contact the store at once.

□ **iLyn** Parts



Mic.

Audio Jack

Earphone Jack

Power/Playback/Pause

REC/A.B

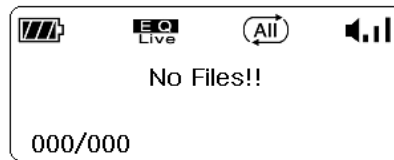
FM RADIO

HOLD

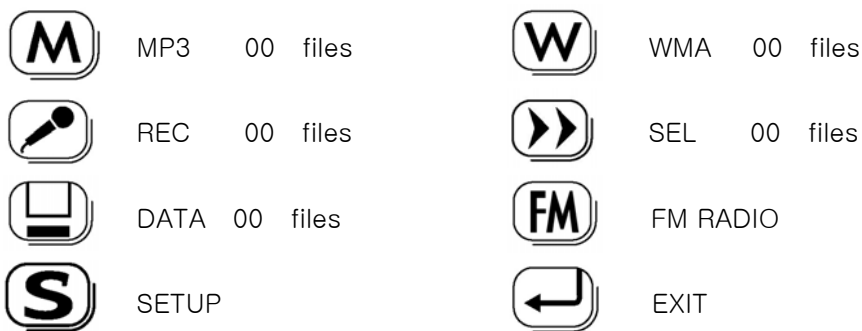
USB Cable

☐ LCD Screen

When the power is turned on the EL Backlight will be turned on and the messages below will appear.



When you press the “Jog” switch at this point, the following menu will appear.

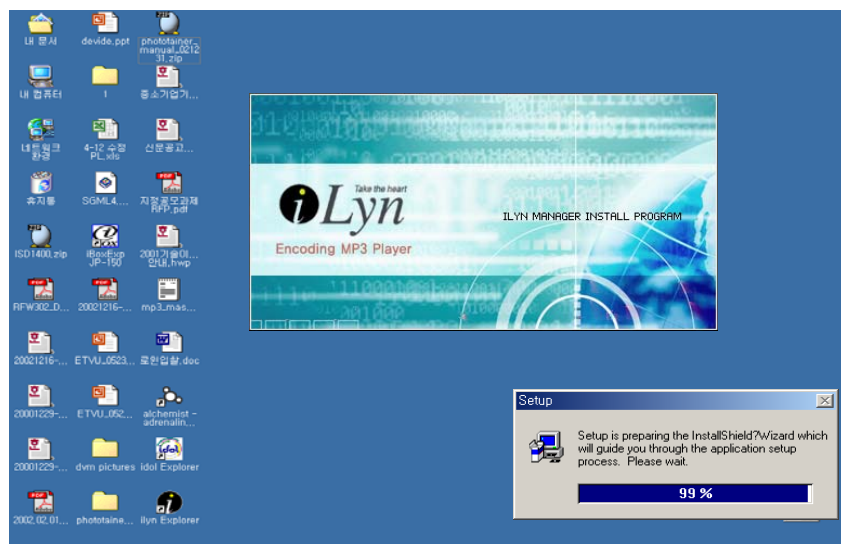


☐ Installing Software to the PC

Please follow the below instructions to install the software.

Below screen will appear when you insert the CD into the CD-ROM.

iLyn Manager : MP3, WMA, REC, Document, and other files can be saved transferred between iLyn and your PC using this software.



❑ TO INSTALL THE SOFTWARE

Insert the CD into your CD-ROM and the screen below will appear. When the auto install begins, follow the on-screen instructions by pressing “NEXT” button.



❑ Connecting iLyn to your PC

In order to copy MP3 files from PC, you must connect the MP3 player to the PC using the USB cable. Please make sure that the iLyn Explorer or the USB software is running when you connect the MP3 player to the PC.

1. Connect the USB Cable to the PC's USB port.
2. Turn the power on and connect iLyn to the PC with the USB cable.
3. “USB Connect” message will appear to notify you that the connection has been made.

Warning: Do not connect the USB cable to the MP3 player when it's playing an MP3 file. The player must be stopped with the power on when connecting to the PC.

❑ Desk Instructions

–. To transfer or save music files

1. There are three ways to transfer files : Menu Command, Tool bar, or simply dragging the files.
2. Select the file with your mouse.

You can select several files at once by pressing the “Shift” button while selecting the files.

3. You can use the Menu Command to move files to Internal Memory or the PC Folder memory.

To save, select Copy Files from Edit menu. Then select Move File to Internal flash, to Folder.

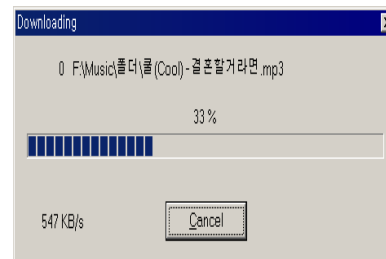
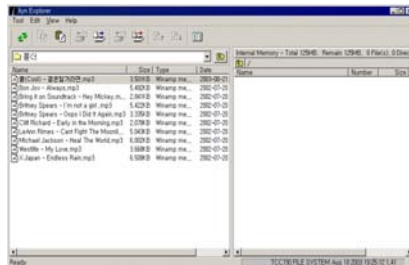
4. You can also use the below Tool bar.



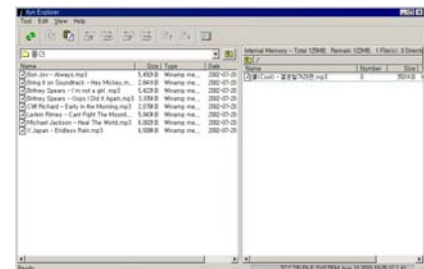
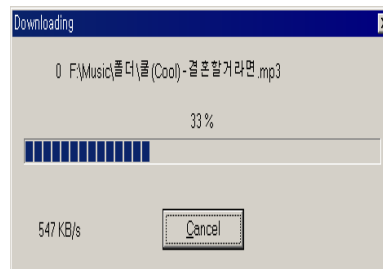
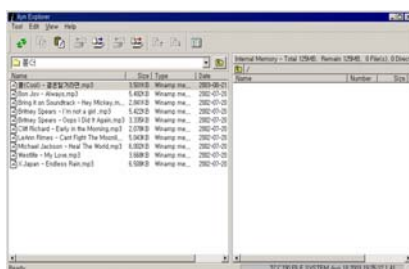
The orders are “Copy to folder, internal, external, Move to folder, internal, external”. Choose the desired task to transfer or save. Select the desired file and use the Tool bar icons to transfer/save.

-. To Transfer/Save Music Files

1. You can drag the file to transfer/save. Select the desired file and drag to Internal Memory or Folder Memory. If you would like to copy the file, press “Ctrl” + “C” on your keyboard and drag the file to the desired location. You can also see the process window.

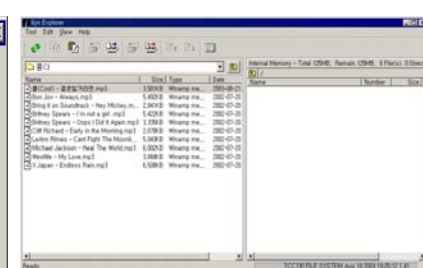
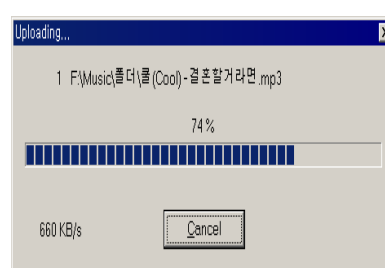
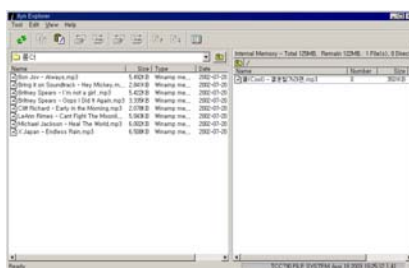


-. Saving/Transferring Music Files from PC to iLyn



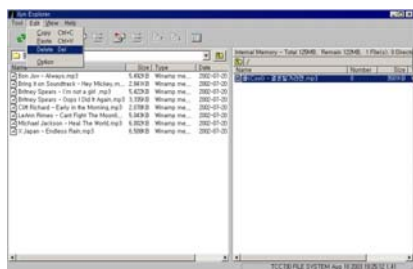
1. Turn on iLyn and connect the USB Cable. The initial screen will appear.
2. Designate a place to save the file and start transfer.
3. Select files to be transferred and start transferring as instructed in the previous page.
4. You can view the process.

-. Saving/Transferring Music Files from iLyn to PC



1. Turn on iLyn and connect the USB Cable. The initial screen will appear.
2. Designate a place to save the file and start transfer.
3. Select files to be transferred and start transferring as instructed in the previous page.
4. You can view the process.

–. Deleting Files



1. Select the file you wish to delete and press the Delete Key on your keyboard or use the “Delete” command from the “File” menu.
2. Select the file with your mouse and press the Delete Key on your keyboard or use the “Delete” command from the “File” menu.

✓ **Warning!!! Deleted files cannot be recovered!!!**

☐ Firmware Upgrade

1. Download and unzip the latest Firmware.
2. Run the manager program.
3. Connect the USB cable to the player and click on “Upgrade Application Code” from the “Tools” menu.
4. Find the upgrade file from the upgrade window and press the open button. This will open the Firmware upgrade process window.
5. When the upgrade is complete, the manager window will disappear automatically.
6. Disconnect the USB cable and reboot the player.

☐ Power ON / OFF

1. Pressing the  will turn the power on. Pressing the same button again for 3 seconds will turn the power off.

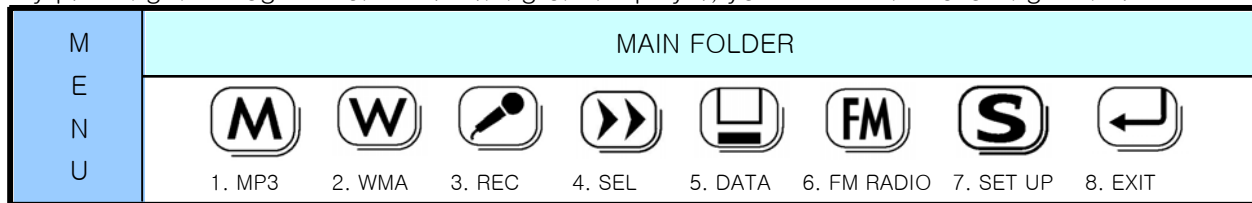


GOOD BYE

2. If none of the buttons are pressed for 30 seconds, the power will automatically shut off.

☐ MENU 1

By pressing the “Jog” button after turning on the player, you will see the following menu.



1. **MP3** : You can view and play MP3 files.
2. **WMA** : You can view and play WMA files
3. **REC** : You can listen to files recorded from an outside source.
4. **SEL** : View selected recorded files.
5. **DATA** : Portable Data-storage device to store personal data.
6. **FM RADIO** : Listen to FM channels or when saving a new channel.
7. **SET UP**: Record, Delete, Alarm, Memory Check, LCD, Preference, Language, and other functions.
8. **EXIT** : To return to initial menu.

□ MENU 2

You can select the Set_UP menu from the main folder to access the following functions.

REC Setup				Erase	Format	Timer	Memory Check	BookMark	LCDSetup	Language		
1.Music Source	Audio	Mic	1 FILE Folder All BACK	Format	Sleep	Remain MEM	OFF	Back-lght	1.Korea			
2.MPEG MODE	MP3	TVF		Low format	Record	REC Time	ON	On/OFF	2.English			
3.BIT RATE	8.16.32.64.128.256.320K				BACK	BACK	LCD	3.Japan				
4.VAD	VAD			BACK				Contrast	4.China			
5.SYNC	OFF SYNC ON 1SYNC ON							▶ 0~20				
6.SILENCE	LOW	Middle	High	BACK								

1. REC Setup : When recording Music(CDP, Audio), Voice, and FM RADIO.

1) Music Source

- ① Audio(When Recording Music) ② Mic(Voice Recording)

2) MPEG MODE

- ① MP3 ② TVF(Fix to BIT RATE 8Kbps)

3) BIT RATE

- ① 8, 16, 32, 64, 128, 256, 320Kbps

4) VAD(Only used when “MIC” is selected from “Music Source” option)

- ① on ② off

5) SYNC(Only used when “AUDIO” is selected from “Music Source” option)

- ① Off ② SYNC On ③ 1 SYNC On

6) SILENCE

- ① Low ② Middle ③ High

2. Erase : When deleting a single file or a whole folder

1) 1 File

2) Folder

- ① MP3 ② WMA ③ REC ④SEL

3) All

3. Format : When formatting the Flash Memory Card

1) Format

2) Low format

4. Timer : Setting up the timer (1~180minutes) during playback or recording

1) Sleep

2) Record

5. Memory Check : To check the whole or remaining memory quantity.

1) Remain MEM

2) REC Time

6. Bookmark(Resume) : Plays the file that was being played previously.

- 1) Off(restart from the beginning) 2) On(restart from where the point where it stopped)

6. LCD Setup : Adjusting EL Backlight or LCD Screen

1) Back-light

① Off

② On

2) LCD Contrast(0~20)

7. **Language** : When selecting a different language

1) Korean 2) English 3) Japanese 4) Chinese

8. **BACK** : Going back to the beginning

(Terms)

-. **Sync** : Automatic tracking function during real-time recording

(1Sync: one track / Sync: automatic tracking while recording)

-. **VAD** : (Voice Activate Detection) : Records only when sound is detected.

-. **TVF** : You do not need to set the Bit Rate when recording voice messages in TVF format.

-. **Bookmark(Resume)** : Return to the track that you were listening to previously.

❑ Listening to Music

▶/■ Power on / Playback / Pause / Stop / Power off

1. Turning the Power On : ▶/■ When you press the button once, the power is turned on. Press once more for playback.

2. You can press the “Job” button while the player is stopped to browse and select MP3 or WMA folder. You can press the Playback button to listen to the selected music.

3. IF you press the “Jog” button during playback, the following menu will appear on the top portion of the LCD screen; MENU, SPD(Speed), EQ(Equalizer), RPT(Repeat), and EXIT.

You can use the ▶▶◀◀ button to toggle between menus.

Speed(SPD) : Normal, Fast, Slow 1, 2, 3, 4, 5

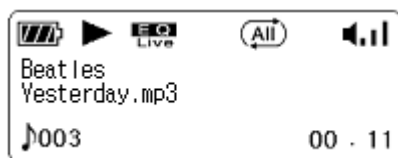
Equalizer(EQ) : Normal, Rock, Pop, Live, Classic

Repeat(RPT) : Normal, All, Random, One

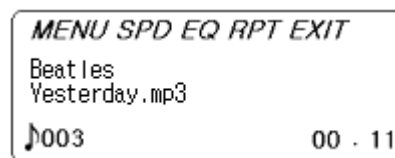
Change the setting according to your preference and press the “Enter” button.

FF : Skip to next song

REW : Skip to previous song



Playback Screen



Menu Screen during Playback

3. ADJUSTING VOLUME

+ : Increase Volume

- : Decrease Volume

4. STOP

-. Press the ▶/■ once to stop.

5. POWER OFF

-. Press the ▶/■ button for 2 seconds to turn the power off.

❑ TO LISTEN TO FM RADIO

You can listen to the radio by selecting FM from the main folder and pressing the “Jog” button.
The supported frequency range is 75,000MHz ~ 108,000MHz.

-. Changing Channels

FF Button : Click / Press Continuously : 1KHz / Auto-Scan to next higher frequency.

REW Button : Click / Press Continuously : 1KHz / Auto-Scan to next lower frequency.

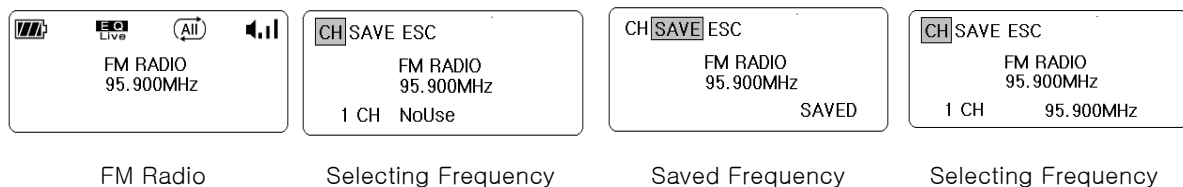
You can stop the Auto-Scan by pressing the opposite button during the scan.

-. Save or Changing the Channels

After adjusting your frequency by pressing the FF / REW button, press the “Jog” button to load the following menu on the top portion of the screen : CH, SAVE, ESC. Move to the CH menu by using the “Jog” button. This will display the saved frequencies in slots 1~10.

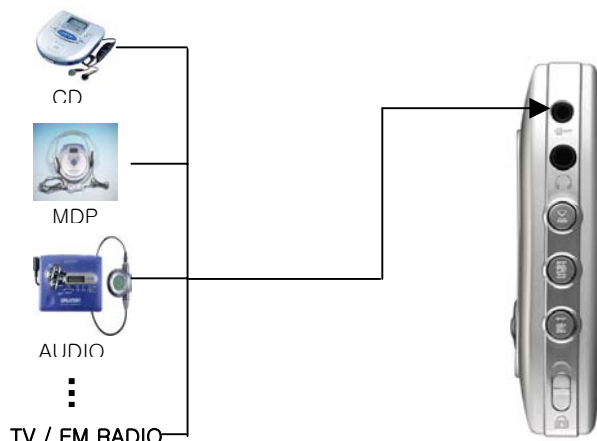
You can move the cursor to SAVE and press the “Jog” button to see if the slot is empty. Find the empty slot, and press the “Jog” button to SAVE. You’ll see a message on the bottom of the screen displaying “SAVED”.

If you wish to modified the saved channels, you can do so by repeating the steps described above. You can simply overwrite on the existing channel.



❑ TO RECORD MUSIC REALTIME.

With the Sync function, you can listen and save music((CDP,MDP,AUDIO,FM RADIO,Internet ,TV etc) into an mp3 file at the same time.

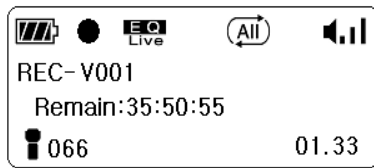


You have to connect the **iLyn** Input jack to the output jack of CDP, MDP, AUDIO, FM, etc with an audio cable to record music from outside source. You then, enter the setup menu and select “REC Setup” function. Adjust “Music Source” to “Audio” to start recording.

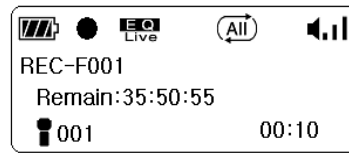
You can adjust the Bit Rate(If you are recording voice messages adjust the Bit Rate to a low value. If you’re recording music, set the Bit Rate to 128K), VAD, SYNC, SILENCE and press “BACK” & “EXIT” button.

-. **To record voice messages** – Enter the Set _ UP menu in the main folder and select “Rec Setup” function. Switch the “Music Source” to MIC and press “BACK” & “EXIT”, then press the record button to start recording.

-. TO record FM broadcast, you can press the record button while listening to the radio.



Voice Recording Screen



Radio Broadcast Recording Screen

❑ To Delete Files

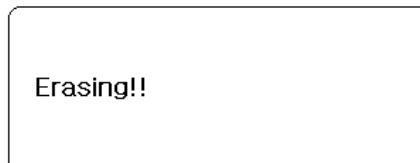
-. If you select the Delete All function, this will erase everything in the flash memory card.

1. Erasing A Single File

-. Goto the Set _ UP menu in the main folder and choose the ERASE function and then choose single file erase function. Use the “Jog” button (►► ◄◄) to select the file to be deleted and press the “Jog” button again to erase the file. A message will appear, “Are you sure?”. Move your cursor to “Yes” and press the “Jog” button again. A message will appear displaying “Erasing!!”.

-. In case you used this device for portable data-storage (Word files and/or other data files), you can Format the memory card or delete the file with a PC.

2. If u wish to delete a folder or all the files, you can goto the Set _ UP menu in the main folder and choose the ERASE function, and then choose Folder / All option. Press the “Jog” button and the current folder or all the files will be deleted.



✓ *DELETED FILES CANNOT BE RESTORED!!!*

❑ Format

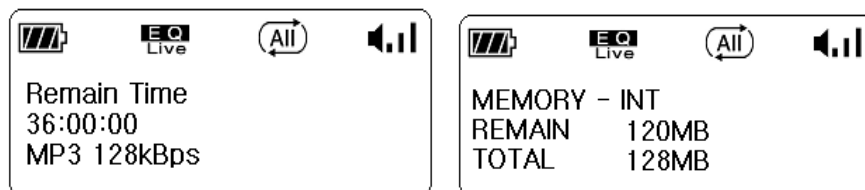
-. Formatting the memory card will clear up errors on the flash memory.

From the Set _ UP menu in the main folder, select the Format function. Select Low Format mode and press the “Jog” button. A message will appear “Are you sure?”. Move the cursor to “Yes” and press the “Jog” button. A message will appear “Low Format!! 00%”.

❑ Checking the Current Memory

1. To check the status of your memory card, you can enter the Set _ UP menu from the main folder and select the “Memory Check” function. Choose “Remain MEM” to check the Total and the Remaining memory on your card.

2. To check the remaining recording time, you can enter the Set _ UP menu from the main folder and select the “Memory Check” function. Choose “REC Time” to view the remaining time.



❑ Using A Timer

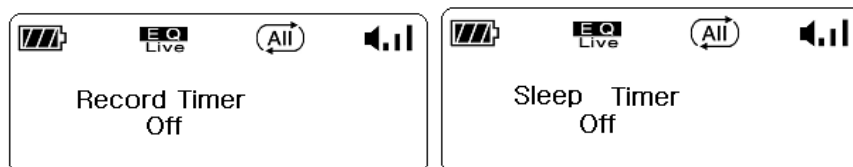
–. The “Sleep” and “Record” function can come very useful when listening to music or recording something because it allows you to set a time limit.

1. Setting up the timer for Playback

Enter the Set UP menu from the main folder and select the “Timer” function. Select “Sleep” mode. Use the +, – on the “Jog” button to set up the timer between Off ~ 180 minutes.

2. Setting up the timer for Recording

Enter the Set Up menu from the main folder and select the “Timer” function. Select “Record” mode. Use the +, – on the “Jog” button to set up the timer between Off ~ 180 minutes.



❑ Adjusting LCD Screen

1. To turn the EL Backlight, you can enter the Set _ UP menu from the main folder and select “LCD Set _ UP” function. Select “Backlight” mode and choose “ON”.

2. Adjusting the LCD DISPLAY

Enter the Set _ UP menu from the main folder and select “LCD Contrast” mode. Use the +, – on the “Jog” button to adjust the contrast level (0~20).

✓ *Using the EL BACK light function will consume only when you must, This function consumes a lot of battery power.*


❑ Selecting Language

Enter the Set _ UP menu from the main folder and select the “Language” function and select the desired language.

–. If you require a language that’s not already installed on iLyn, you can manually install it with the install CD that comes with this player.

❑ Lock


1. You can lock all the buttons by switching the HOLD button down.

2.  will appear on the LCD screen and all the buttons will stop working.

3. You can switch the HOLD button up to unlock the buttons.

❑ Warning

Please store and use the  player as directed below.

1. Please refrain from applying strong force on the player. Light impact on the player during walking or jogging is fine, but dropping the player on the ground or applying strong forces with a strong object may cause the player break.
2. Keep the player away from water.
Water may damage the internal components on the player and cause the player to break down.
In case the player is exposed to water, use a dry cloth to wipe the water off and contact your local service center.
3. Storing the Player
 should be stored away from humidity, strong magnetic field, or heat.
4. Low Voltage Warning : Please note that when the battery's voltage reaches 1.2V (80% Used) the battery icon will blink and the power will automatically turn off.
5. When you are recording something important, select the Set _ UP menu from main folder and select "REC Setup" function. Select "Music Source" and make sure the source is set to "MIC".
6. When using this player as a portable data-storage device (Word and/or other data files) you can only erase the file when the player is hooked up a PC or by formatting.

Product Specification

MODEL	iLyn AP-100
MEMORY	Internal Memory 64MB/128MB/256MB/512MB
VOLTAGE	1.5V
BATTERY	1 AAA Size Battery
LCD DISPLAY	Graphic LCD Letter(128 x64 dot)
SIZE(W X H X D) / WEIGHT	33 X 77 X 17mm / 33g (w/o battery)
CASE	Plastic
FILE TRANSFERING SPEED	4.5 Mbps
VOICE RECORDING	MPEG I,II Layer-3,VAD Method
NOISE RATIO	90dB
EAR PHONE OUTPUT	10mW
OUTPUT FREQUENCY RANGE	20Hz ~ 20KHz

❑ MP3,WMA File, Songs, Time

구 분	64MB	128MB	256MB	512MB
MP3 File Down	16 Songs	32	64	128
WMA File Down	32 Songs	64	128	236
Music Recording Bit-128	16 Songs	32	64	128
Music Recordnig Bit-32	60 Songs	130	260	520
Voice Recording Bit-128	1:10 Hours	2:20	4:40	9:20
Voice Recording Bit-32	4:30 Hours	9:30	19	38
Voice Recording Bit-16	9:30 Hours	19	38	76
Voice Recording Bit-8	19 Hours	38	76	152

B Class	This product is designed for residential use and is in compliance with the electronics frequency registration This product can be used in residential area or any other places.
---------	--

❑ Trouble Shooting

-. Please refer to the following trouble shooting guidelines before contacting our service department.
Player's power does not turn on : Check the battery and its polarity.

The player doesn't respond when you press the buttons : Check the LOCK switch.

MP3 Files cannot be uploaded/downloaded : Check the USB cable connection. Check if the program
is properly installed on the PC.

Lack of Memory : Delete unnecessary files.

❑ Product Warranty

1. This product has been manufactured under strict quality control and inspections.
2. If the product breaks down during normal usage, our dealer and/or service center will fix the product for free for the period listed in the warranty below.
3. A service fee may apply after the warranty period or in case of the following :
 - . If the problem was caused by the customer's misuse.
 - . If any internal modification was done by the customer.
 - . Problems occurring from such natural calamities as fire, sea wind, flood, and/or earthquake.
4. Please bring this warranty certificate when you require a maintenance.
5. We do not reissue warranty certificate. Please store it in a safe place.
6. This warranty is limited to Korea only.

Product	: iLyn	Warranty Period	: 1 Year
Model Name	: AP-100		
Date of Purchase	:	(Year)	(Month) (Day)
Customer's Name	:	Tel :	
Address	:		

Other items not mentioned will observe the Customer Protection Regulations of Korea.

Customer Care Center 82-31-447-2343 FAX : 82-31- 447-2342

The outer casing and/or dimensions may change without prior notification to the customers to increase product quality.



ACHOM EP CO., LTD

Informations

ACHOM EP CO., LTD. Customer Care Center

Tel : 82-31-447-2343 Fax : 82-31-447-2342

Address

An-Yang 6 Dong, 517 Gu-Woo Bldg, Suite 401.

Mahn-An-Ku, An-Yang-Si

Homepage

<http://www.ilyn.co.kr> / <http://www.achom.com>