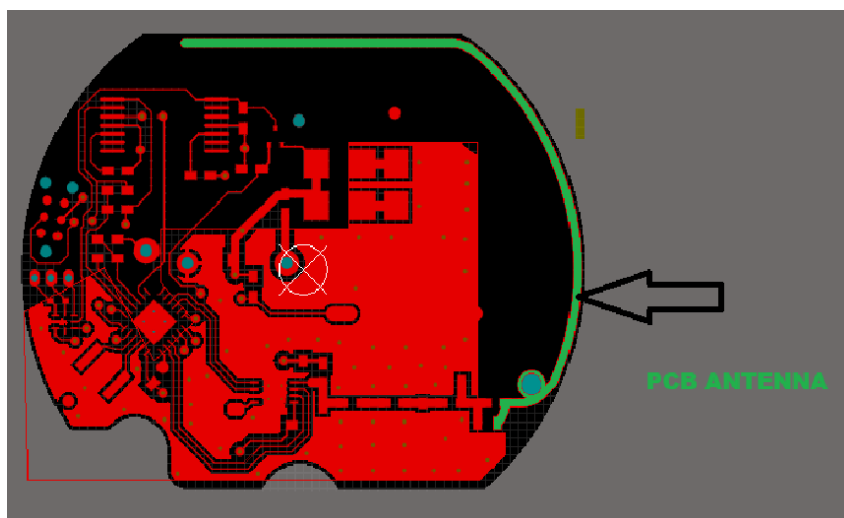



1 DESCRIPTION

The TRS-SENSOR-DRY /B and TRS-SENSOR-DIA /B incorporate an internal pcb loop.

PARAMETER	VALUE
Antenna Type	Internal PCB Loop
Antenna Length	48 mm
Antenna Width	0.8 mm
Antenna Thickness	17.5 um
Max Output Power	10dBm
Antenna Gain	1dBi
Modulation	FSK
Mode	Simplex



	<h1>ANTENNA SPECIFICATON</h1> <p>TRS-SENSOR-DRY /B TRS-SENSOR-DIA /B</p>	REV 1.0
		PAGE 2 OF 2

Note: The TRS-SENSOR-XXX /B antenna meets the requirements defined by the standards of FCC §15.203 and ISSED RSS-Gen Issue 5, which state that **“an intentional radiator shall be designed to ensure that no antenna other than that furnished by the responsible party shall be used with the device. the use of a permanently attached antenna or of an antenna that uses a unique coupling to the intentional radiator shall be considered sufficient to comply with the provisions of this section. the manufacturer may design the unit so that the user can replace a broken antenna, but the use of a standard antenna jack or electrical connector is prohibited. the installer shall be responsible for ensuring that the proper antenna is employed so that the limits in this part are not exceeded.”**

2 REVISION HISTORY

Version	Description	Reviewer	Approver	Date
1.0	Initial Release	P. Gomolchuk	C. Demetriooff	2024/7/18