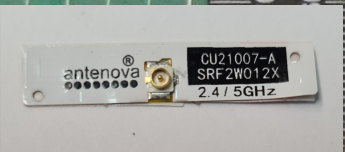


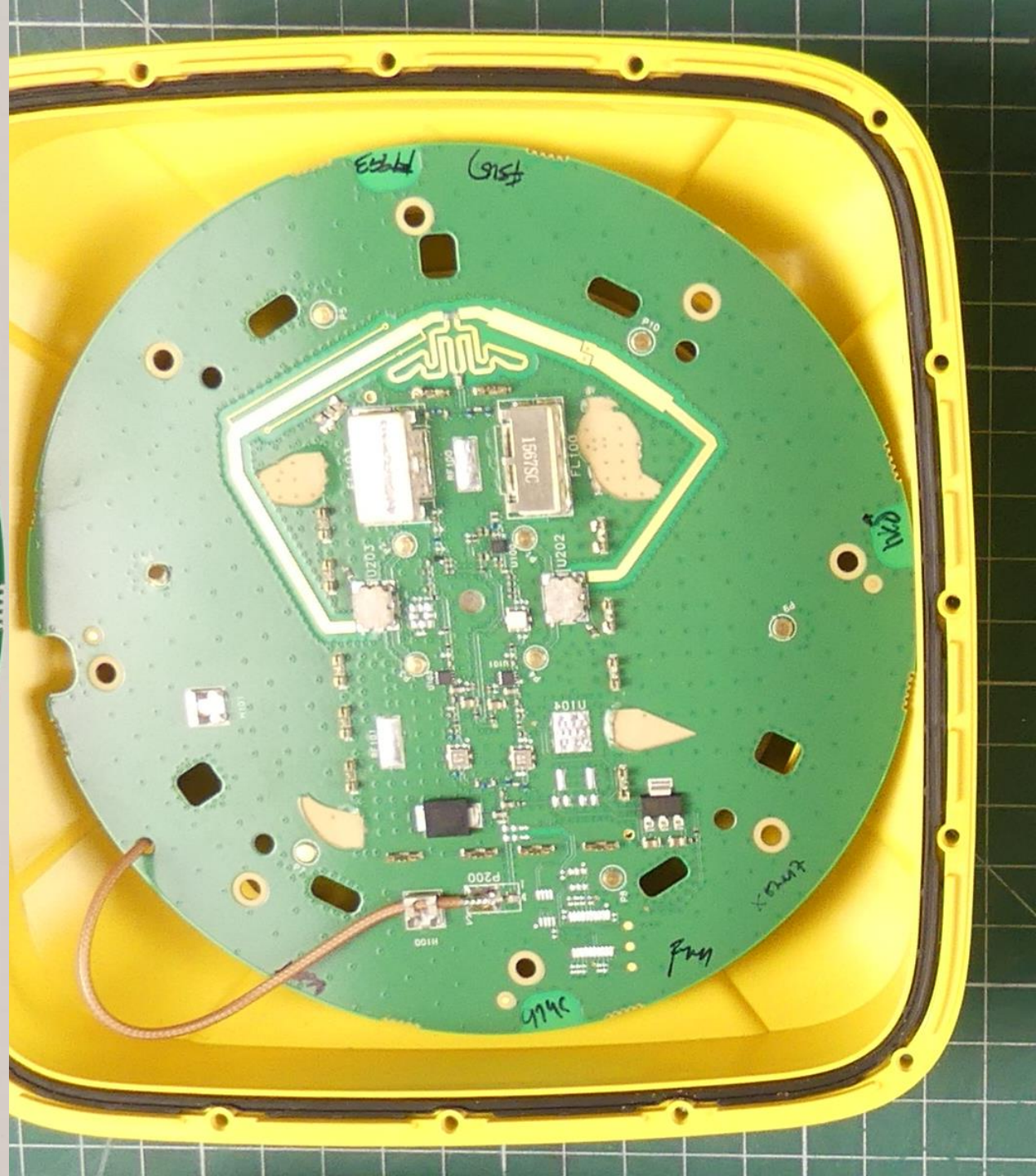
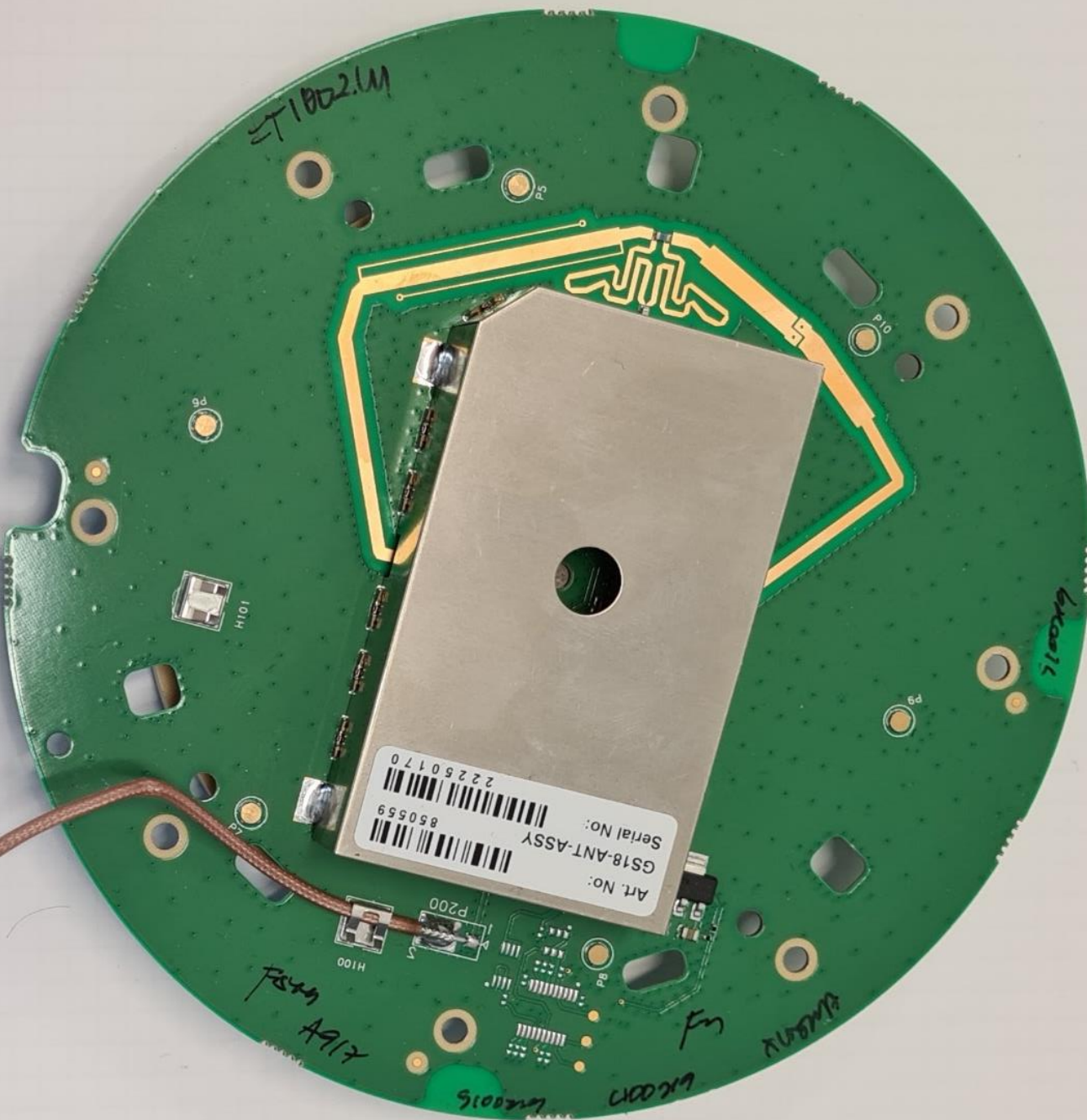
rev

90°



2.4 GHz antenna

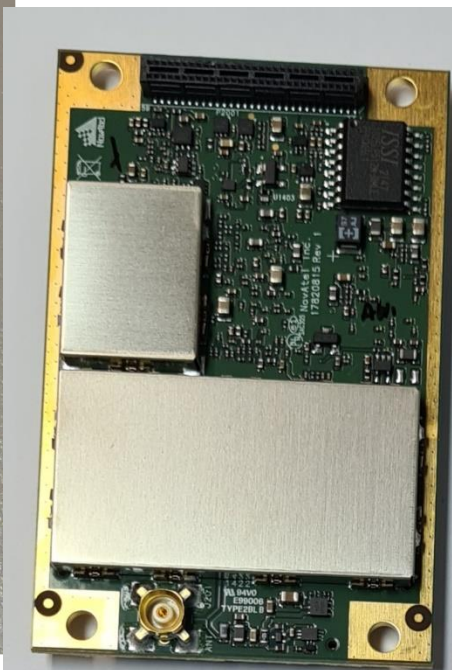
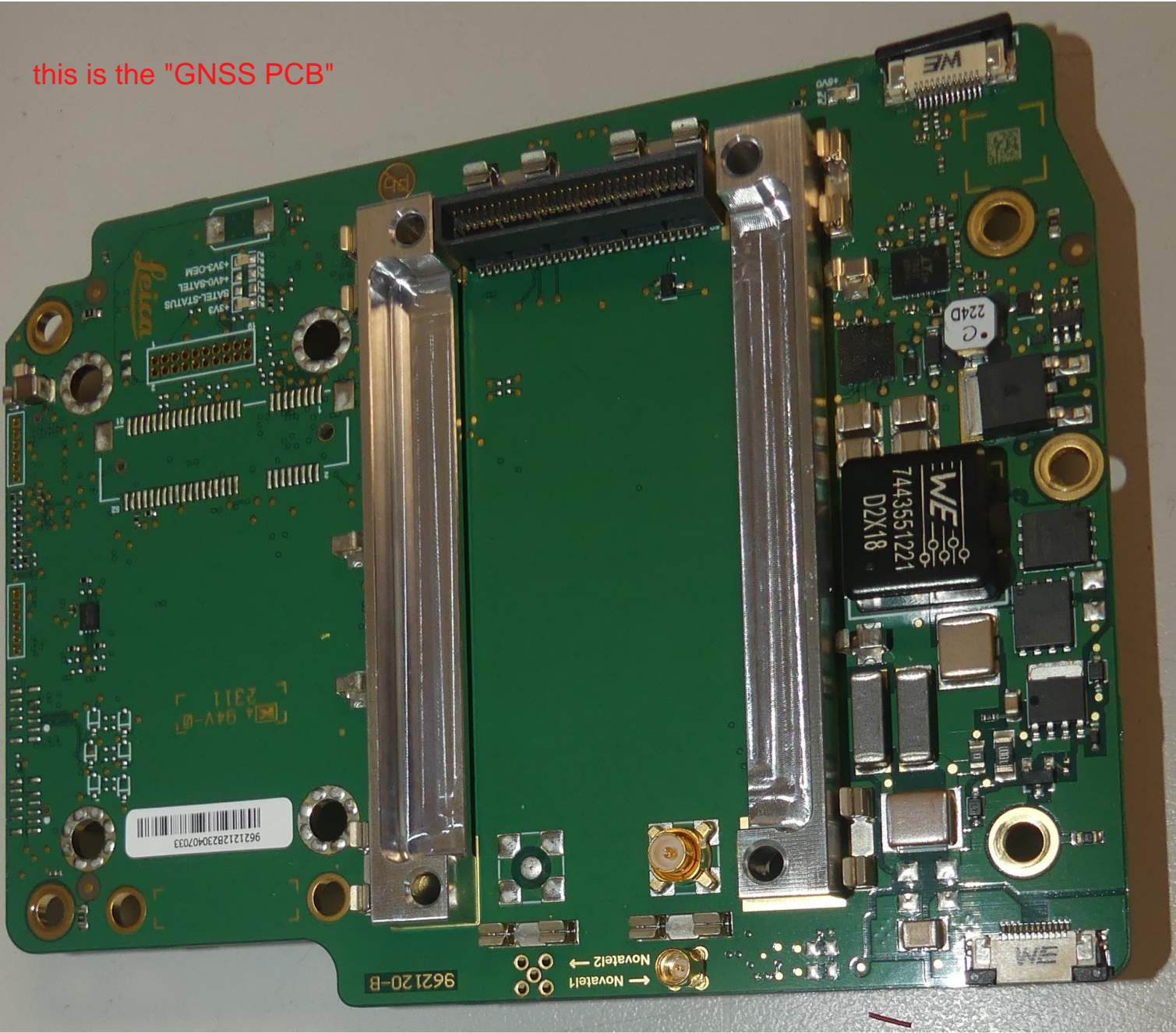


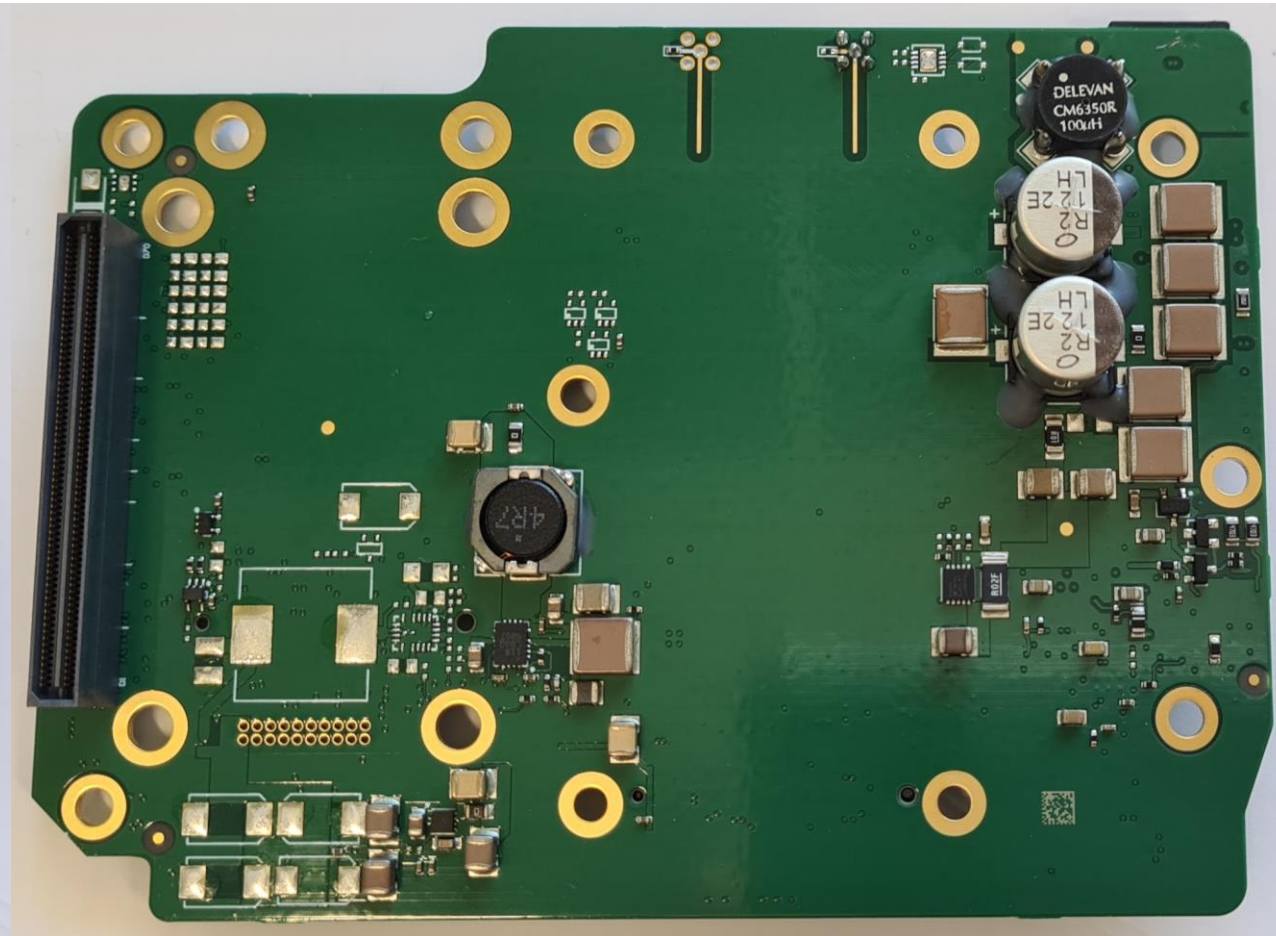
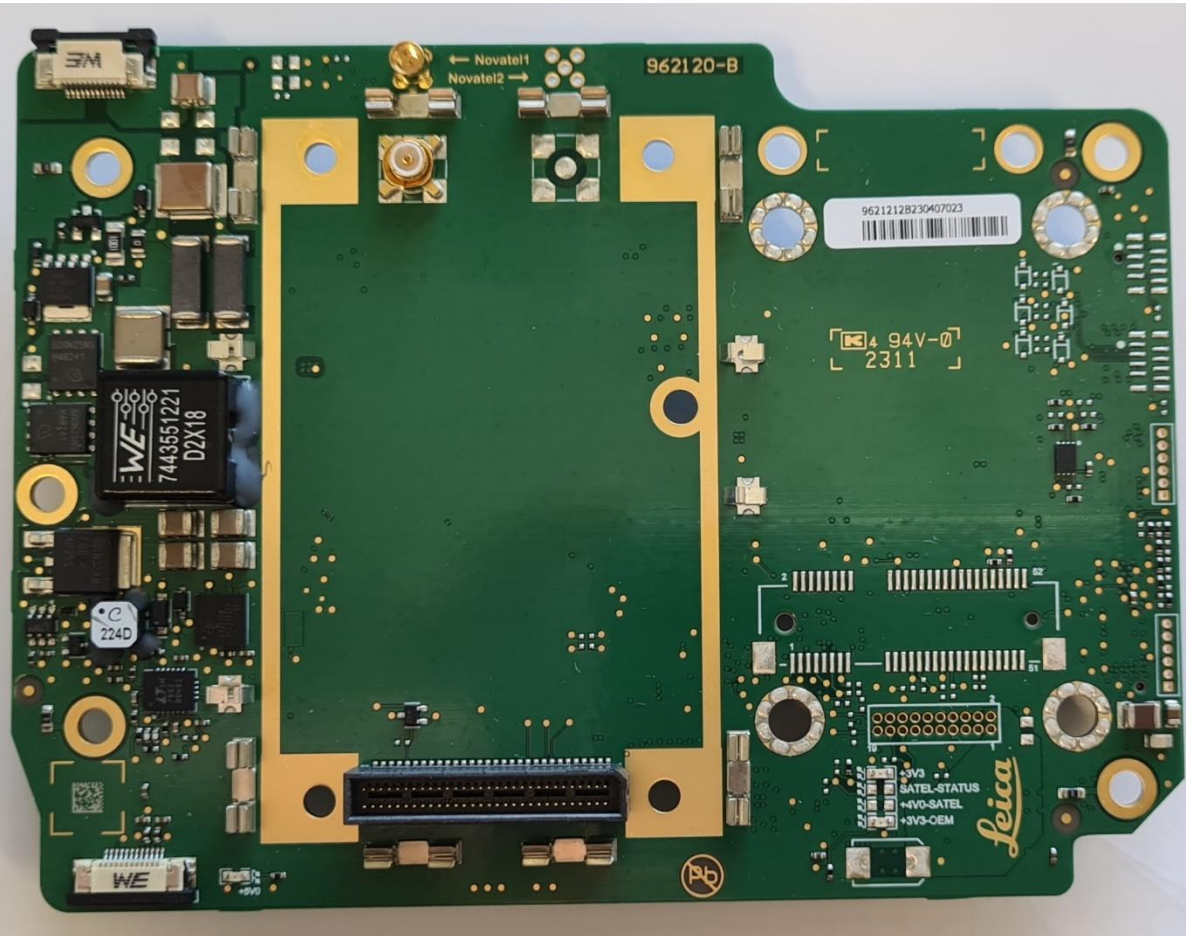




NOVATEL's GNSS modular component

this is the "GNSS PCB"

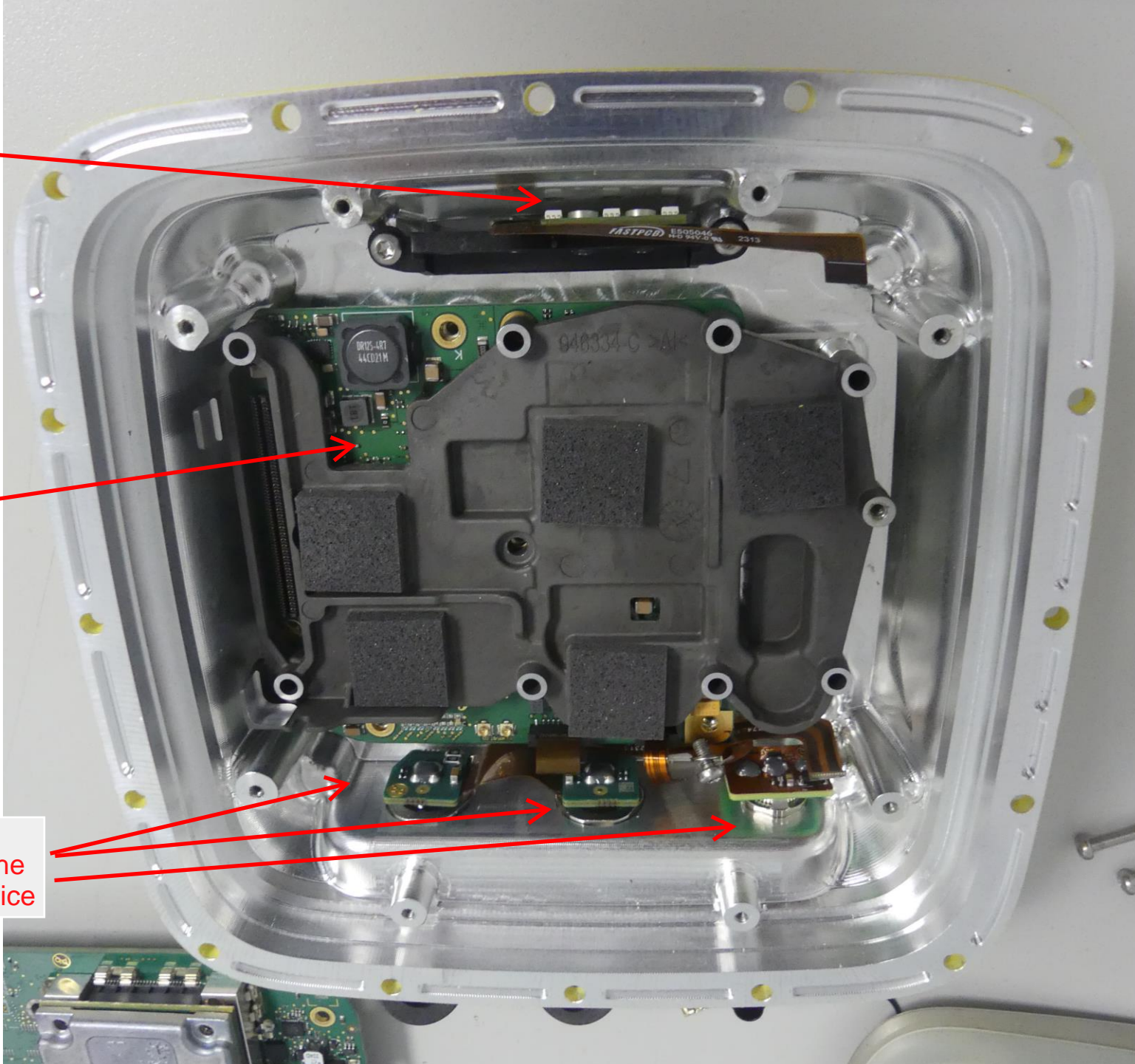




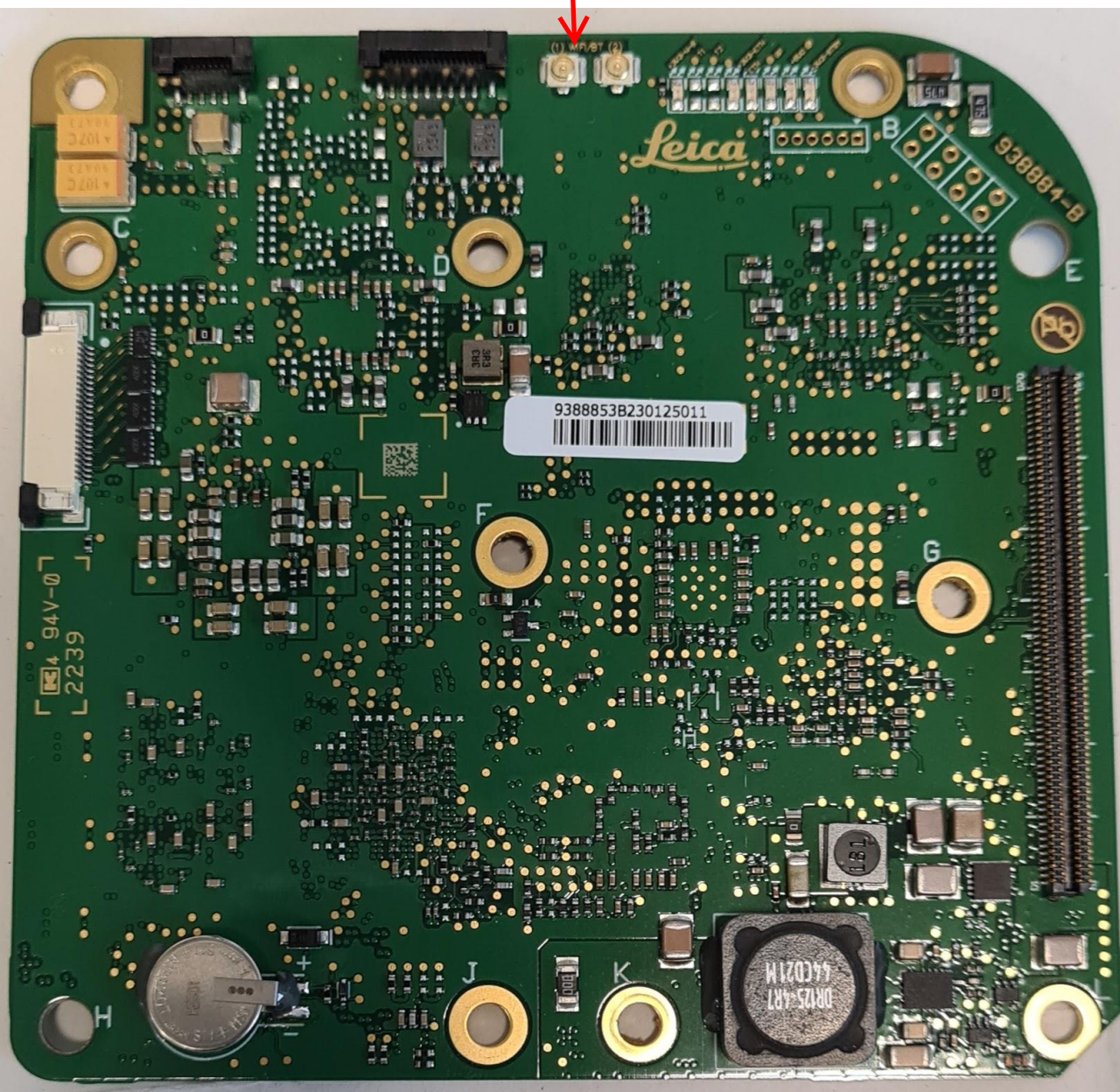
PCB of the LED panel at the front of the device

This is the BTWLAN PCB

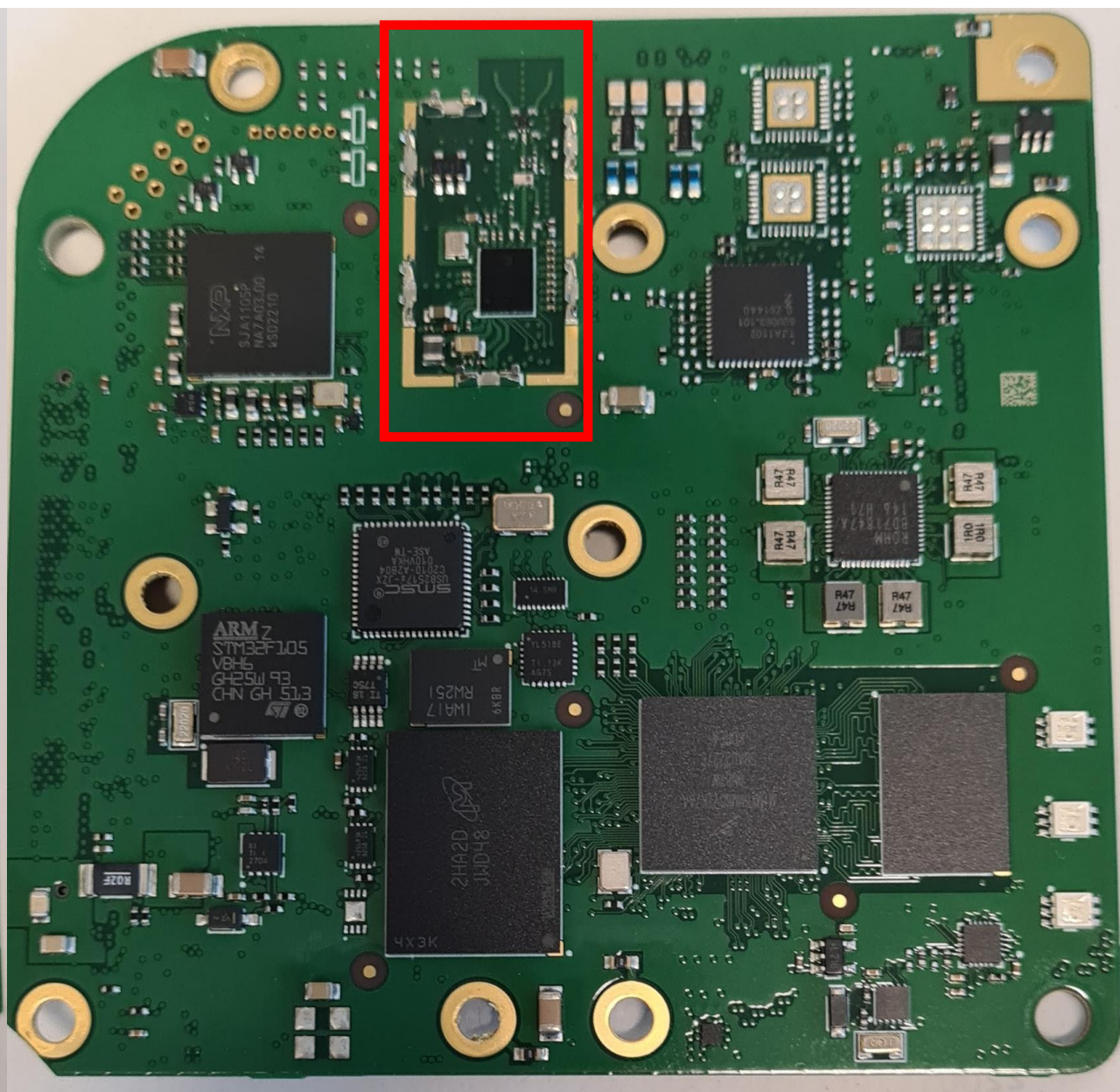
PCB of the connectors at the back of the device



the internal antenna is plugged to one of these UFL connectors
the other one is unused

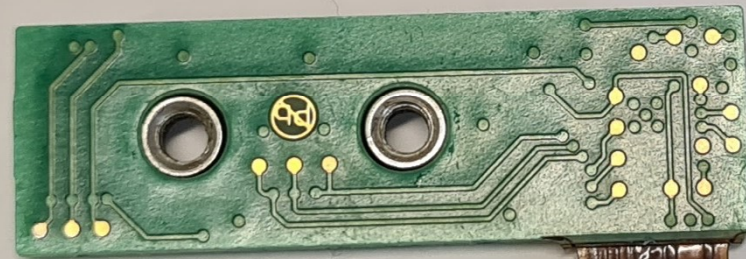


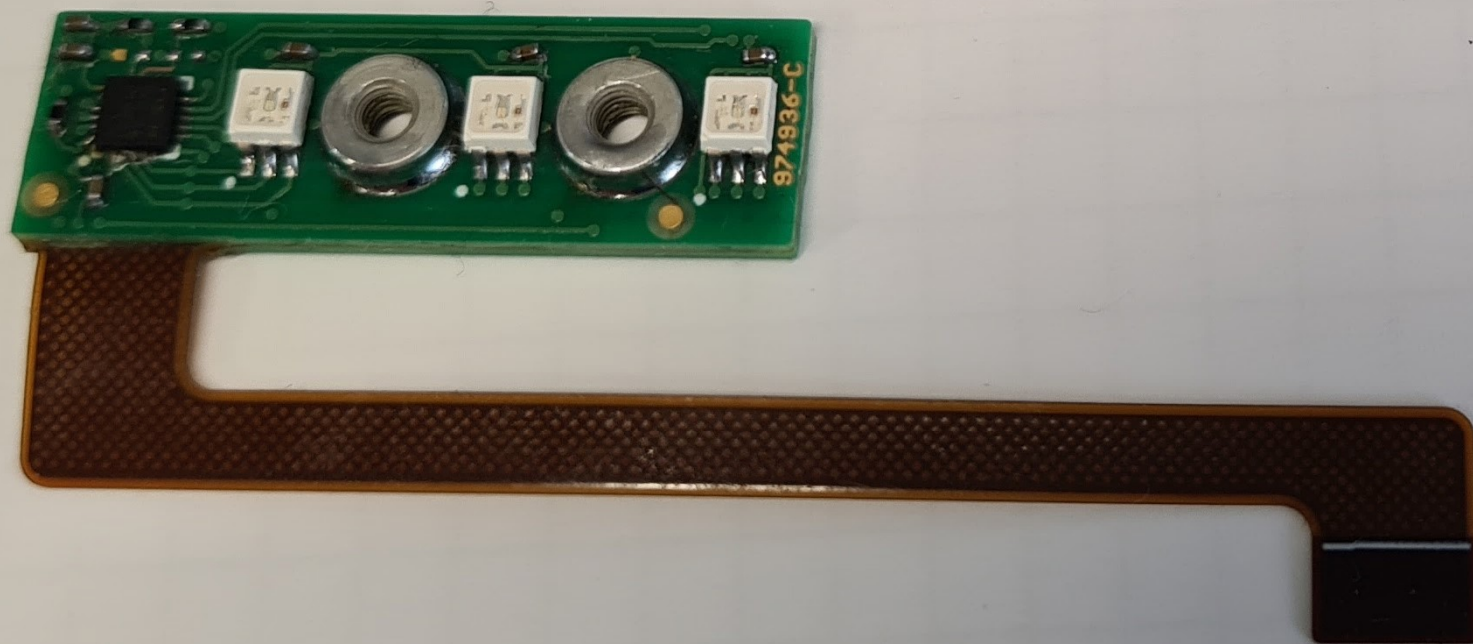
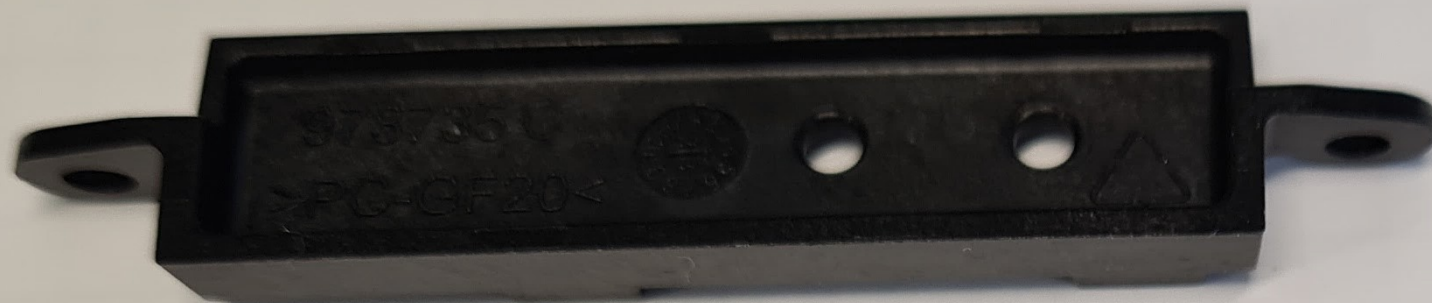
this is the Qualcomm SoC (RF portion of the PCB)



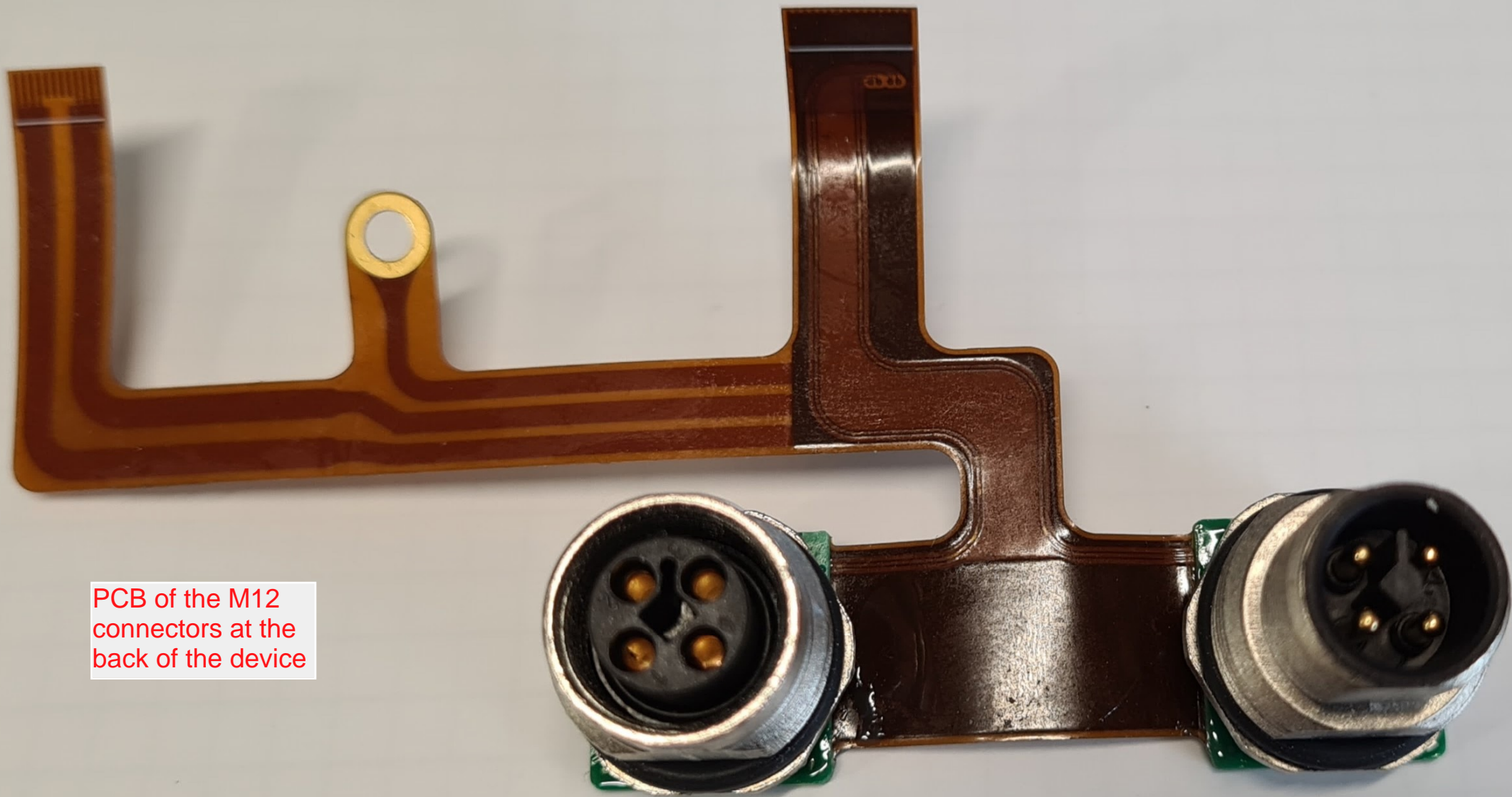


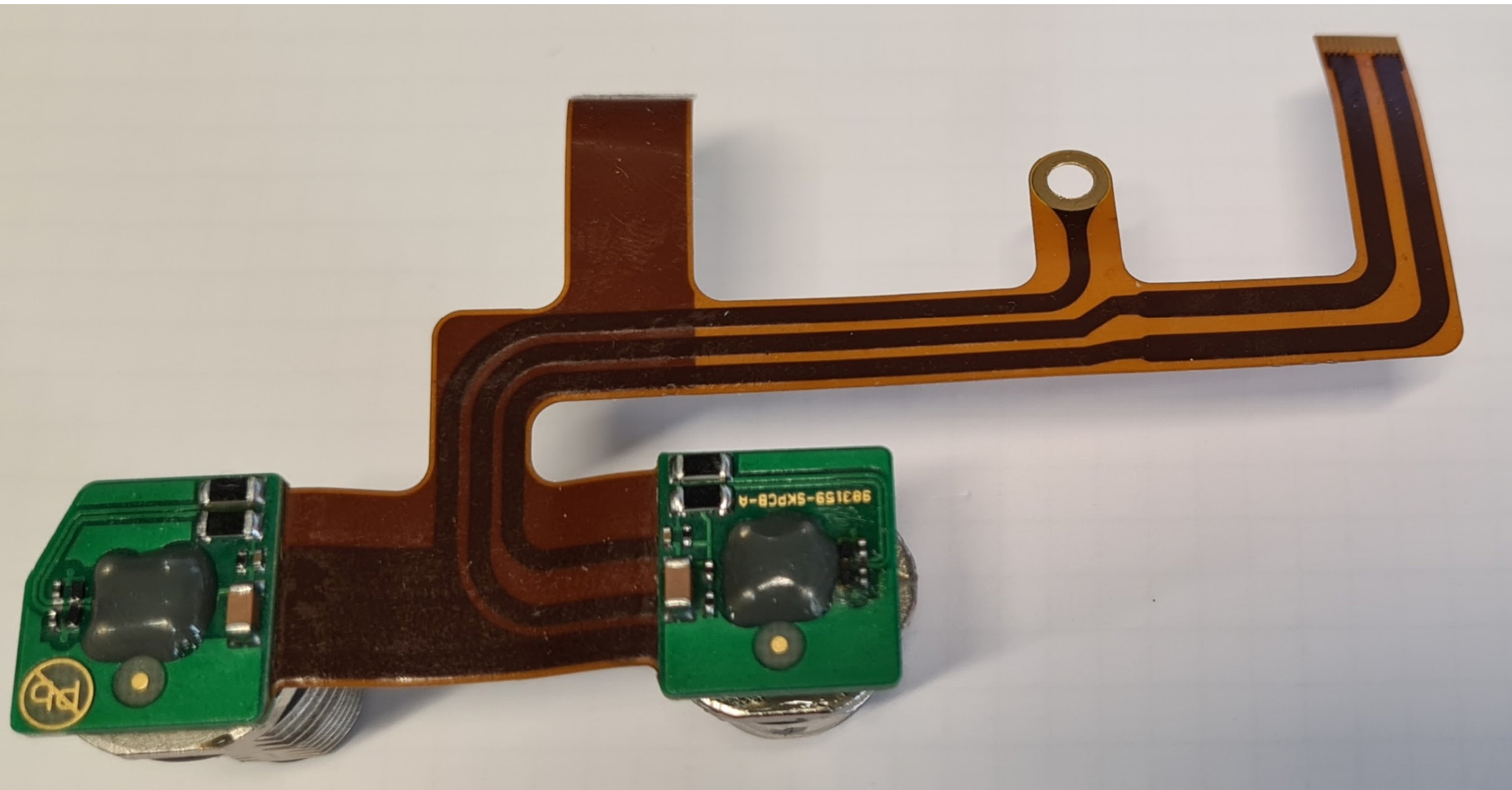
PCB of the LED
panel at the front
of the device





PCB of the M12
connectors at the
back of the device





PCB of the M8
connector at the
back of the device

