



Helicomm

Module, PCB and antenna Photos

DOC-001

Date: August 31, 2003
Version: 0.1

© 2003 Helicomm, Inc.

All rights reserved.

This publication is proprietary and confidential and is not for disclosure outside Helicomm, Inc., and their affiliates.

No part of this publication may be reproduced, adapted, or translated in any form or by any means without prior written authorization of Helicomm, Inc.

Information published here is current or planned as of the date of publication of this document. Because we are improving and adding features to our products continuously, the information in this publication is subject to change without notice.

Trademarks

Helicomm, IPWINS, IP•Link, IPWiNs, WIN•Gate, and WLAN•Lock are trademarks of Helicomm, Inc. Zigbee is a trademark of the ZigBee Alliance. All other product names mentioned in this publication are trademarks of their respective owners.

Revision and Iteration History

Version	Publication Date	Authors	Summary of Changes and Updates
1.0	08/31/2003	Leon Gateno	Release

Table of Contents

1	Introduction.....	1
2	Pictures.....	2
2.1	Picture of the Module	2
2.2	Pictures of the Board	3
2.3	Picture of the Antenna	4

1 Introduction

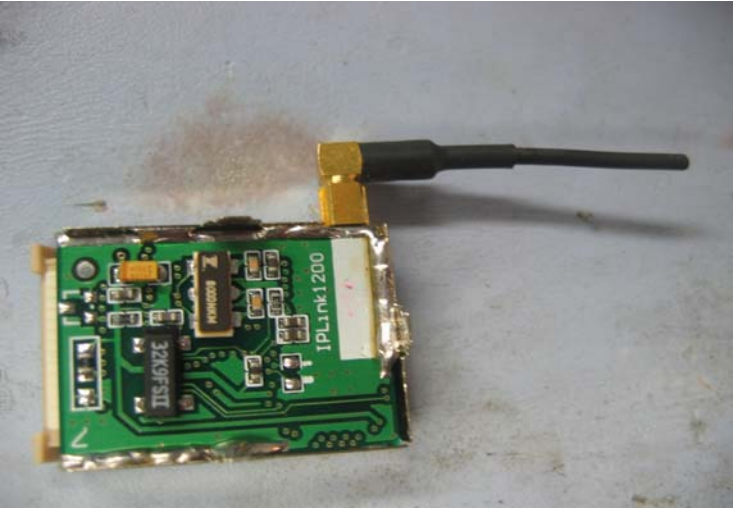
This document is intended to show the pictures for the IPLINK1200 and its antenna.

2 Pictures

There is three set of pictures. The first set is for the IPLINK1200 module itself. The second is for the board inside of the module. Finally, the picture of the antenna.

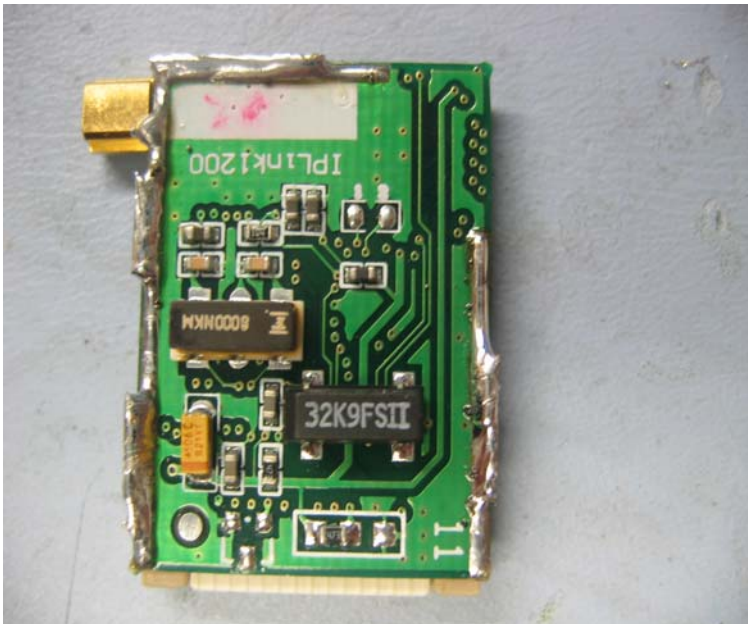
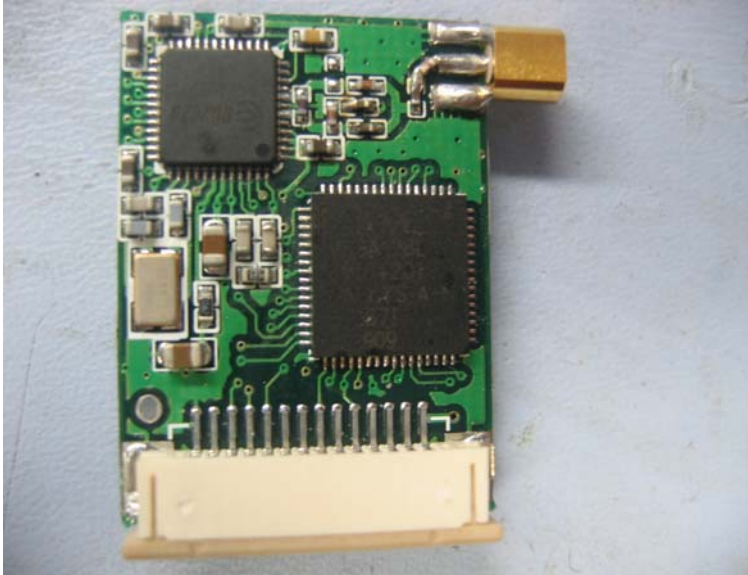
2.1 Picture of the Module

The following is the picture for the module. This module will be installed in a large system. The size of the module is 30mm by 22mm by 7mm. The RF connector sticks out by 4mm. The thickness of the connector is 4mm.



2.2 Pictures of the Board

The following is the picture for the populated board:



2.3 Picture of the Antenna

The following is the picture of the antenna. The antenna size is 37mm long. It has an RF connector that matches the connector on the board.

