

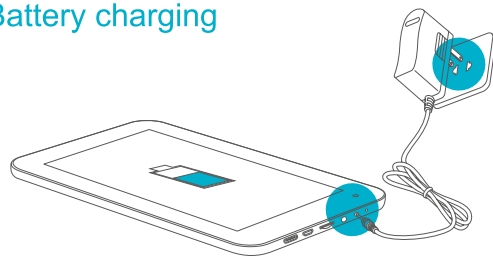
# U7

## Quick start guide

Thank you for purchasing SmartDevices Tablet PC U7. U7 is a sophisticated electronic product and you are requested to read and understand this manual carefully. This quick start guide will enable you to easily familiarize with basic functionalities of U7 product.



### Battery charging



Battery Charging Diagram

Please make sure that the battery is fully charged before your first use. To charge battery, please connect the matching charger to 220V mains power outlet, and insert the DC jack end into the charge interface of U7. Switch ON the AC mains. After a few seconds, the charging instructions will appear on the screen. During battery charging, you can view the charging progress by pressing the power button. Once the charging is completed, please unplug the charger from U7 and the power supply connection.

### Boot

Hold down the power button until the SmartDevices Logo appears on the screen. Wait for a few seconds, after the system startup is completed then enter into the main interface.

### Hibernate

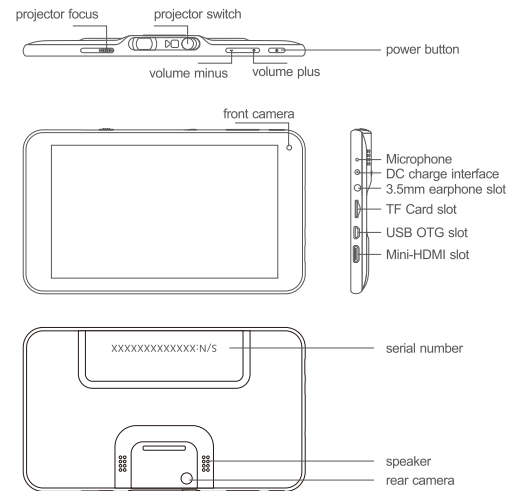
Once booted up, a short press of power button will put the U7 to hibernate state. During hibernation, U7 will turn off the screen and enter into the standby condition, where it will consume very little power. Another short press of power button will bring the U7 out of hibernation and you can continue with your operation.

### Shutdown and forced shutdown

If you are not using the U7 for several days, we recommend you to shutdown the machine. Hold down the power button for two seconds, and select the "Shutdown" from the pop-up window "Tablet PC Option" to completely shut down the U7.

In case of a system crash and the U7 stops responding to your commands, please hold down the power button for more than 10 seconds to forced shutdown. You need to reboot the U7 after a forced shutdown.

### Know more about U7



### The touch screen operation

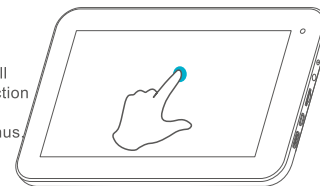


#### Touch Operation

A quick touch on the application, the option or the menu icon on the screen will start or execute the corresponding program or function.

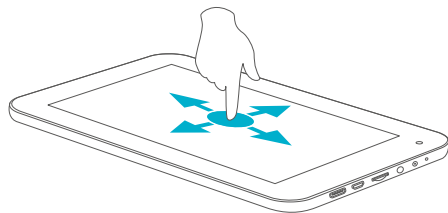
#### Press and hold operation

A longer touch on the icon will simulate the right button function of the mouse to display more operating options or sub menus.



### The drag operation

To drag a list or a control bar across the screen, slide your finger up and down or left and right while you continue to touch, hold the selected control bar or the list.

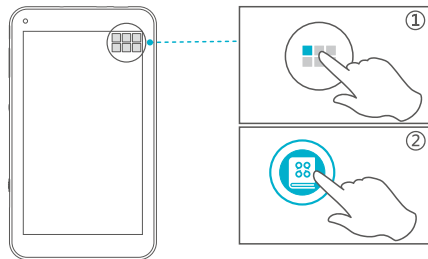


## Screen unlock



Drag the lock icon to the unlock icon side using your finger. The main interface appears.

## Start application



To display the pre-installed applications, tap the icon " " that is located at the top right corner of the main interface screen. Touch the application icon in the list to select and start any specific application.

## Connect to Wi - Fi network

Tap the icon " " which is located at the top right corner of the main interface screen to display the application list. From the application list, tap the icon " " to setup the Wi-Fi connection. Please drag the Wi-Fi switch icon from the left side to the right side to start the Wi-Fi function, U7 will search for nearby wireless hot spots automatically.



Tap the hot spots that you want to connect in the hot spots list in the right side which are in the range, you will be asked to provide the authentication details like access password of the hot spots in the pop-up dialogue box. Once it's completed, tap the "connect" button to connect to the wireless network.

## Connect to the computer

You can connect your U7 to a computer with Windows 7 operating system using the USB data link cable which is supplied along with your U7. The connection may take a few minutes. Once they are connected, U7 storage and the file in the TF Card are accessed through the file explorer. If your computer operating system is Windows XP, please visit: <http://www.smartdevices.com.cn/support/download/U7/> to download and install Windows Media Player 11 in your computer. Reboot your computer after installation. Connect U7 to the computer using the USB data link cable. Open " My Computer " to view U7 storage disk icon and the files.

## Firmware upgrade

SmartDevices will occasionally release the firmware updates / upgrades for U7 to incorporate new functionalities or to fix known bugs. To get U7's latest firmware and know the upgrading way, please visit our official website: <http://en.smartdevice.com.cn/>

## After-sales service

If you have any questions or suggestions, please contact us as the following ways:  
E-mail: [service@smartdevices.com.cn](mailto:service@smartdevices.com.cn)  
Tel. : 400-8850-820 ( 8:30 a.m. to 12 p.m., 1:30 p.m. to 5:30 p.m. on working days.)

\*This guide is subject to change without any prior notice, and should be used as a reference.

\*The pictures shown in this guide are for reference only, take practicality as standard.

Copyright ©2012 Smartdevices Inc.  
[www.smartdevices.com.cn](http://www.smartdevices.com.cn)

## **FCC Warning**

This device complies with Part 15 of the FCC Rules. Operation is subject to the following two conditions:

(1) this device may not cause harmful interference, and (2) this device must accept any interference received, including interference that may cause undesired operation.

NOTE 1: This equipment has been tested and found to comply with the limits for a Class B digital device, pursuant to part 15 of the FCC Rules. These limits are designed to provide reasonable protection against harmful interference in a residential installation. This equipment generates, uses and can radiate radio frequency energy and, if not installed and used in accordance with the instructions, may cause harmful interference to radio communications. However, there is no guarantee that interference will not occur in a particular installation. If this equipment does cause harmful interference to radio or television reception, which can be determined by turning the equipment off and on, the user is encouraged to try to correct the interference by one or more of the following measures:

- Reorient or relocate the receiving antenna.
- Increase the separation between the equipment and receiver.
- Connect the equipment into an outlet on a circuit different from that to which the receiver is connected.
- Consult the dealer or an experienced radio/TV technician for help.

NOTE 2: Any changes or modifications to this unit not expressly approved by the party responsible for compliance could void the user's authority to operate the equipment.