

3D Wireless Mouse

User Guide

Thank you for your persistent support and trust for NEWTONE Mouse. Nowadays, in order to make you all be out of cord, our company develops a sort of wireless mouse which adapts reliable radio wave to carry floating signal of mouse. As a result that you can freely use your wireless mouse wherever you want.

The product is compatible with IBM PC and DOS Windows95/98/2000/ME/NT/XP etc.

≡' INSTALLATION

↓ * Hardware Installing

↓ >> Shut down and turn off the computer.

∩ >> Plug the round PS2 or USB connector into the computer's round PS2 or USB port.

3 >> Battery Installing:

1) Push down the indented area on the top cover of mouse and slide it backwards.

2) Insert two "AAA" batteries correctly into the mouse battery compartment.

† >> Turn on the computer.

2 >> Channel Setting

1) Turn on the computer.

2) Gently press the key "connect" on the top of receiver after the windows operation system is fully running.

3) Press the key "connect" on the button of mouse and then test the connection by rotating the scroll of mouse. If it works properly, the lights on the receiver with flash indicating a strong signal.

This device complies with Part 15 of the FCC Rules.

Operation is subject to the following two conditions:

(1) this device may not cause harmful interference.

(2) This device must accept any interference received, including interference that may cause undesired operation.

Warmly Reminding :

- 1) Please repeat step 2)&3) if you found the mouse is clashed by other products.
- 2) Please repeat step 2)&3) to reset the communication channel whenever you change the batteries.

2. Software Installing

- 1) Place the driver into your floppy drive.
- 2) Click “run” of “start” menu bar, working window will appear.
- 3) Input “A:\setup” and select the confirm button to install.



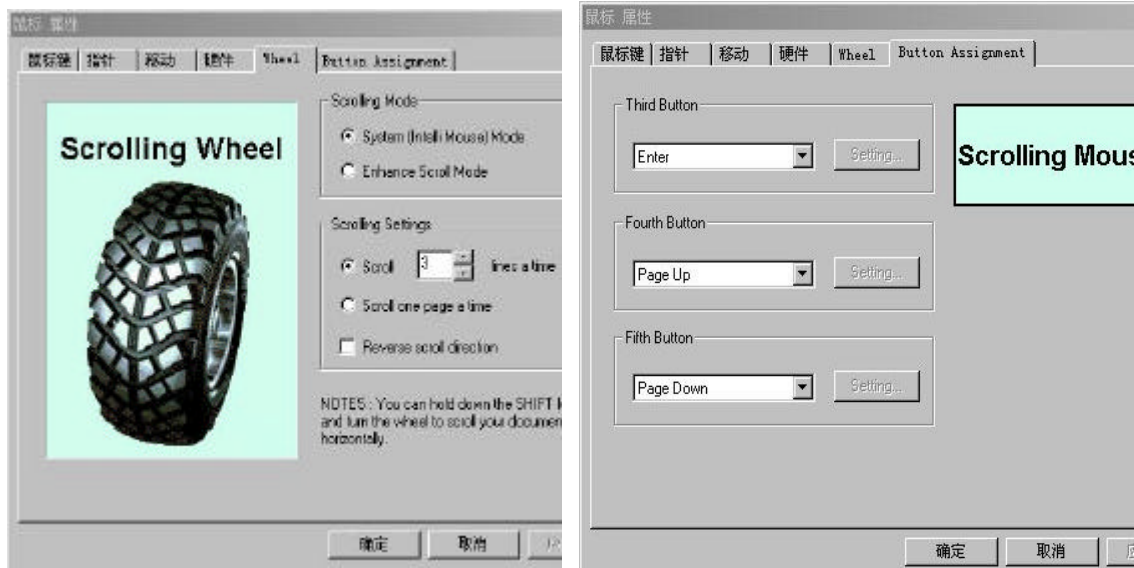
- 4) Follow the setup instructions on your screen, restart your computer after installing completely.

三、 Software operating

1. Function setting

- 1) Please double click the mouse icon on windows desktop taskbar, open mouse attribute setting. (Refer to picture)





☞ Make the setting according to your own taste or need.

☞ There are following functions supply.

- 1) <Middle button> (Default)
- 2) <Auto Scroll>
- 3) <Back Space>
- 4) <Close Application>
- 5) <Copy>
- 6) Ctrl
- 7) <Cut>
- 8) <Delete>
- 9) <Double Click>
- 10) <Drag>
- 11) <Enter>
- 12) Esc <Escape>
- 13) <Explorer>
- 14) F1 (Help)
- 15) F2
- 16) F3
- 17) F4
- 18) F5
- 19) F6
- 20) F7
- 21) F8
- 22) F9
- 23) F10
- 24) F11
- 25) F12
- 26) <Find Document >

- 27) <Maximize>
- 28) <Minimize>
- 29) <Ms Internet Explorer>
- 30) Netscape WEB <Netscape Navigator>
- 31) <Paste>
- 32) <Page Down>
- 33) <Page Up>
- 34) CD <Play CD>
- 35) <Print Screen>
- 36) Print Screen+Alt
- 37) <Restore Application>
- 38) <Run>
- 39) Shift
- 40) <Space>
- 41) <Start Menu>
- 42) Tab
- 43) <Undo>
- 44) <Zooming>

☞ * Mouse Trouble shooting :

1. Computer can't get the mouse registered on the receiver.
 - Check the connection and ensure that the mouse port of the receiver is correctly plugged into the computer.
 - Ensure that the PS/2 port setting is correct.(Refer to the pc instruction)
2. Mouse can not work after installing completely.
 - Check the mouse and ensure the batteries correctly plugged into the battery compartment.
 - Check and ensure the mouse projector and the receiver rein the same channel.
- 3) If the cursor become slow, jumping or even quit working.
 - Check the tracking ball and scan wheel of the mouse, clean them if there are sundries around.
 - Check and change a new battery if the old one is in the low power situation.
 - It will be form a barrier prohibiting smooth operation that the receiver is around high-radiancy area, check and make it far from that.
 - Check and ensure that you already correctly remove the existing mouse software in your computer.

☞ * Maintenance of the mouse

- a) Open the ball cover anti clockwise and remove the ball.
- b) Clean the ball with a dry, clean cloth.
- c) Clean the roller using a cotton swab dipped with clean water.

d) Reinstall the ball and cover carefully.

Caution:

Any changes or modifications not expressly approved by the party responsible for compliance could void the user's authority to operate the equipment.

Note:

Note: This equipment has been tested and found to comply with the limit of part 15 of the FCC Rules. These limits are designed to provide reasonable protection against harmful interference in a residential installation. This equipment generates, uses and can radiate radio frequency energy and, if not installed and used in accordance with the instructions, may cause harmful interference to radio communications. However, there is no guarantee that interference will not occur in a particular installation. If this equipment does cause harmful interference to radio or television reception, which can be determined by turning the equipment off and on, the user is encouraged to try to correct the interference by one or more of the following measures:

- Reorient or relocate the receiving antenna.
- Increase the separation between the equipment and receiver.
- Connect the equipment into an outlet on a circuit different from that to which the receiver is connected.
- Consult the dealer or an experienced radio/TV technician for help