



HP2090

2.4GHz Digital Wireless USB Headphone User Manual

INTRODUCTION

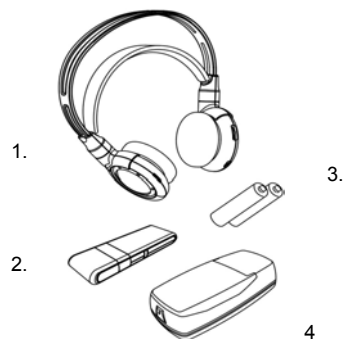
This 2.4GHz Digital Wireless USB Headphone uses latest wireless technology that enables you to enjoy music or movie watching privately with your personal computer.

FEATURES

1. 2.4GHz Digital USB Wireless Headphone for computer application.
2. Operating distance up to 100 feet in open area.
3. 8-channels selectable for you to get the best reception.
4. Muting.
5. Auto tuning function.
6. Virtually interference free audio quality.
7. Compact size for traveling convenience.

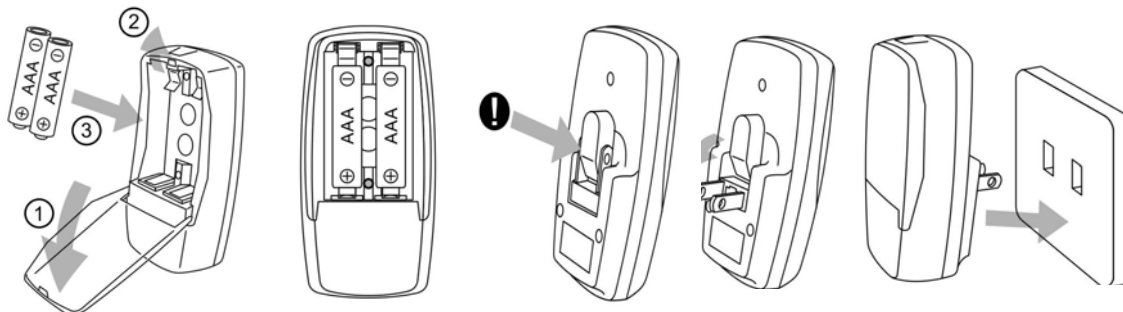
ACCESSORIES

1. Headphone.
2. USB Transmitter.
3. 2 pieces of AAA size rechargeable batteries.
4. Battery charger.



HOW IT WORKS

1. Before using the headphone for the first time, please insert the two batteries into the battery charger with correct polarity. Plug the battery charger to the electrical wall outlet by pulling out the charging pin. The charging process begins automatically and the two charging LEDs on the charger will light up in RED.



2. It takes around 12 hours to charge the batteries for the initial time.
3. Open the battery compartment cover of the headphone. Insert two pieces of batteries (supplied in the package) by matching the + and + on the batteries to the diagram inside the battery compartment.
4. Close the battery compartment by sliding the battery compartment cover back into place.
5. Switch on the headphone by the "Power" switch, a red LED will light up, and plug the USB transmitter into the USB port of your computer.
6. The USB transmitter will light up in blue.
7. Select and play the songs from your computer. When a song is playing, the blue LED on the USB transmitter will be sparkling.
8. Whenever you find frequency jam, press the "Channel" button on the transmitter.

No driver installation is needed.

If you have encountered any problem when using the headphone, you can try the below setting in order to get the best reception.

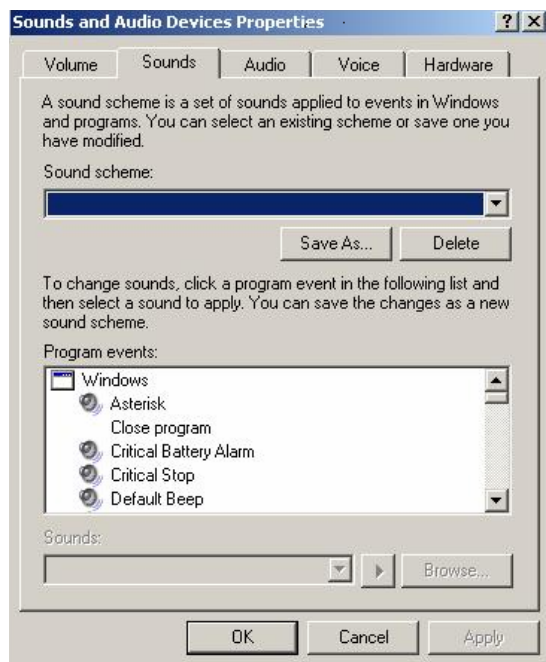
SETTINGS (If Applicable)

The page of "Multimedia" could be found by selecting "Sounds and Audio Devices" from Control Panel. The way to get Control Panel is following by:

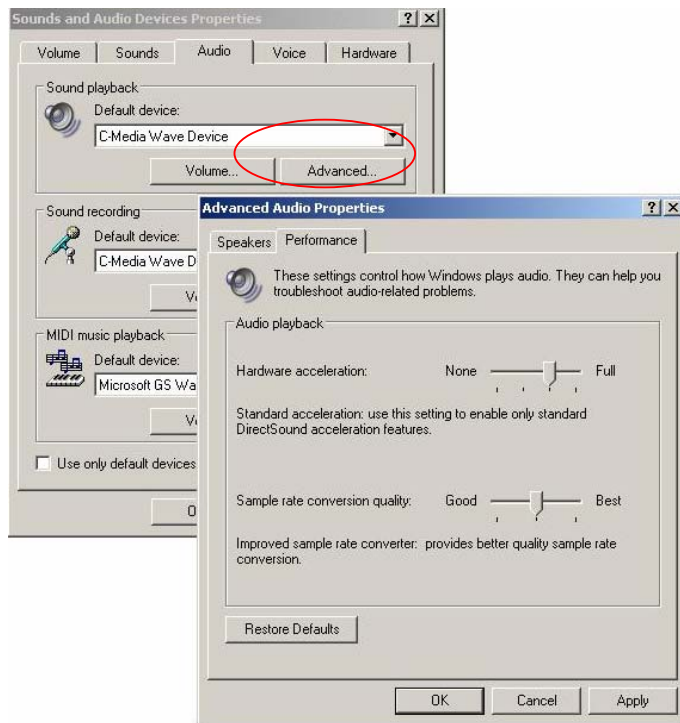
WinXP: >Start >Control Panel.

Win2K/ME/98SE: >Start >Settings >Control Panel.

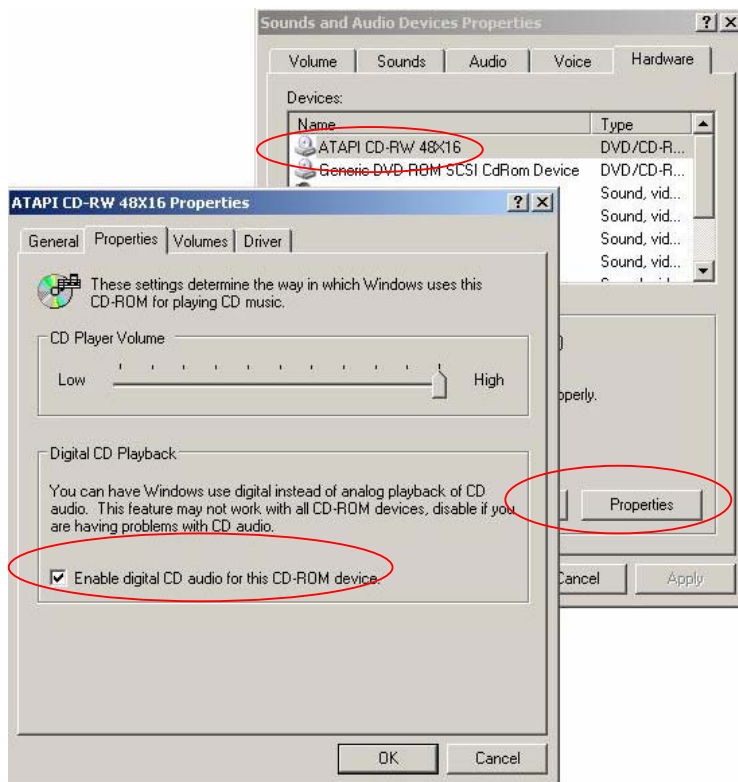
There should be some differences of the interfaces among different operation systems. Here below is an example of Windows XP:



1. If there are a lot of noise while playing the sound, please try the below settings:

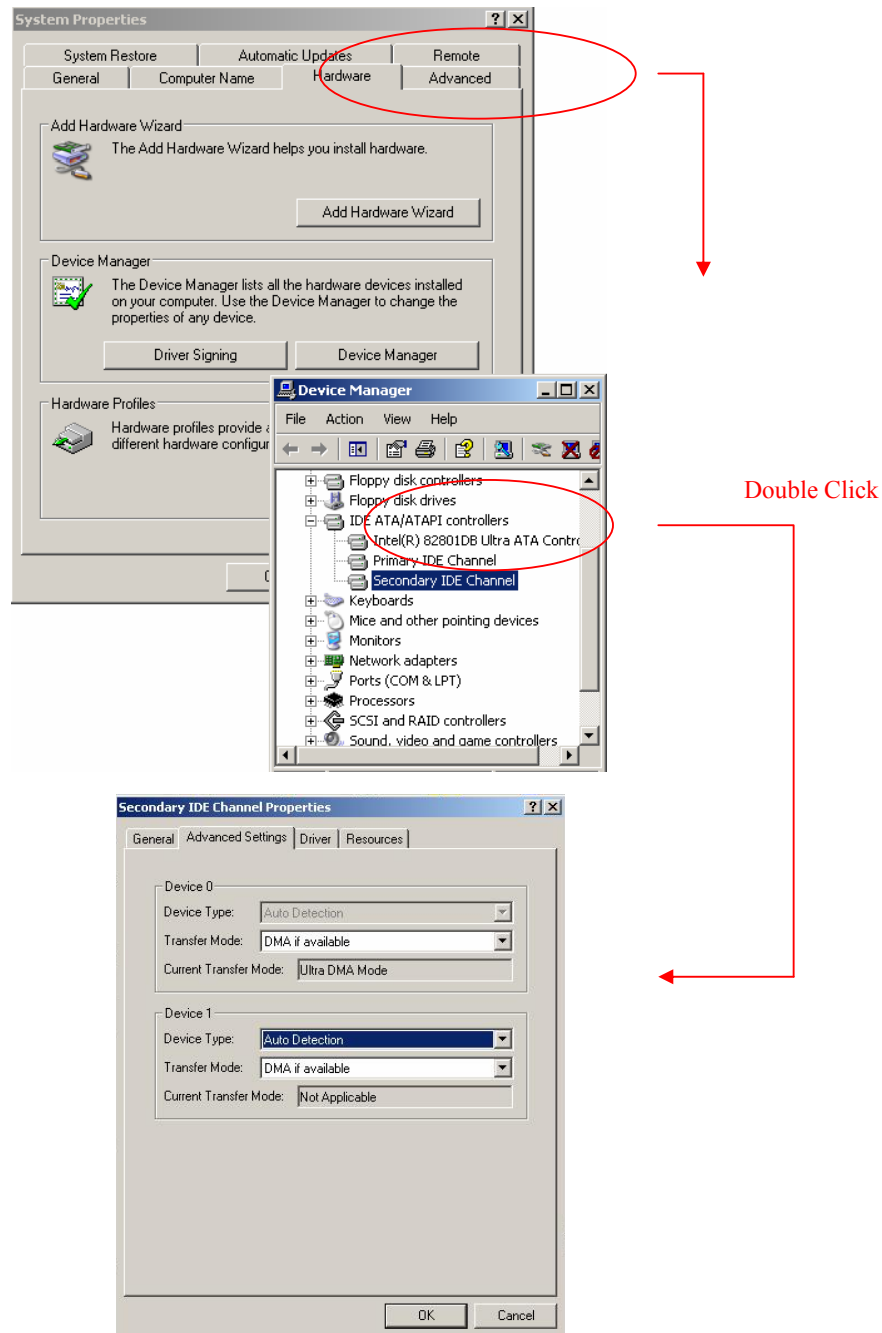


2. If there is no sound while playing CDROM/DVDROM, please try the setting as follows:

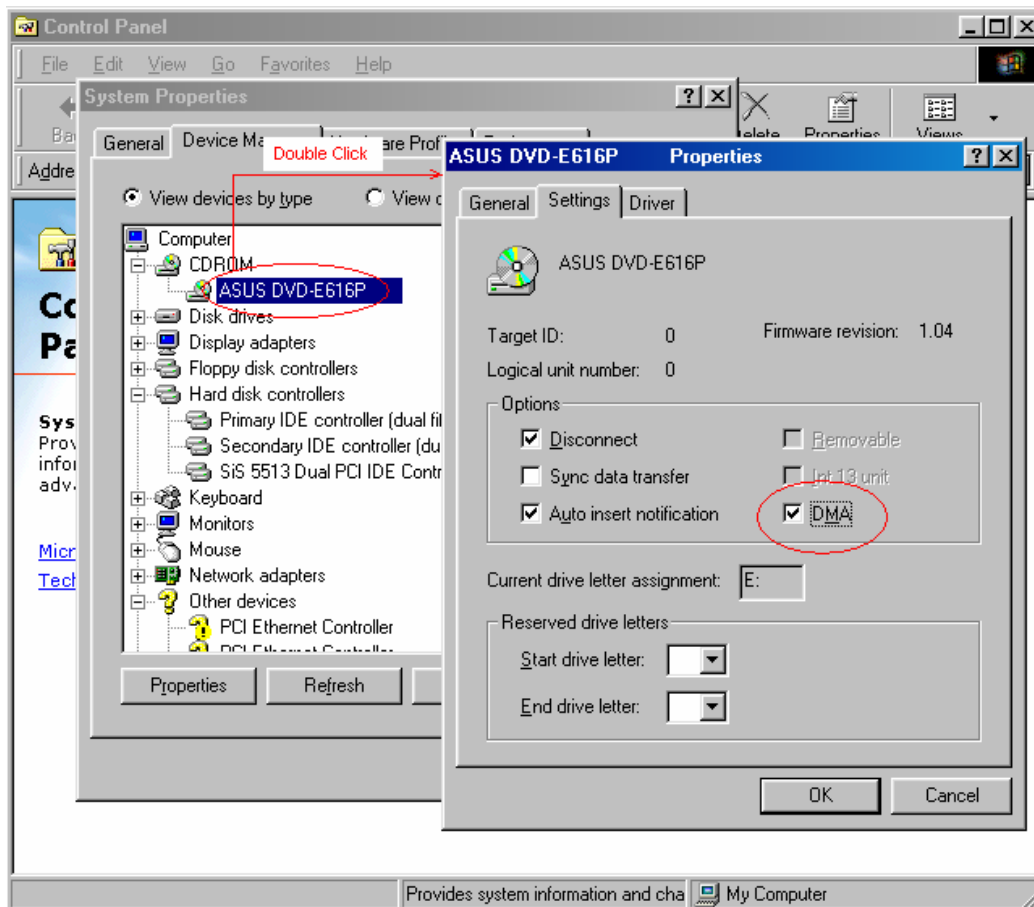


3. If the sound is discontinuous while playing CDROM/DVDROM, you have to enable DMA mode of CDROM/DVDROM by Device Manager, Driver of Properties, some other Tools or Applications (ex: Power DVD). The IDE bus of motherboard should be separated into Master and Slave devices. And, there are two Transfer Mode(s), PIO and DMA, could be used for the device. For example, CDROM may be assigned to be Master device of Secondary IDE channel; you have to figure out the part before updating the setting. Please select "System" from Control Panel.

WinXP/2K: (if you cannot see "System", please switch the Control Panel to Classic View.)



For WinME/98Se:



TECHNICAL SPECIFICATIONS

Transmission Mode	:	UHF stereo
Carrier Frequency	:	2.4GHz Digital
Operation Voltage	:	Headphone, 2 x AAA size NiMh Rechargeable batteries (included)
Frequency Response	:	20Hz – 20KHz (Typical)
Distortion	:	0.2% (Typical)
S/N Ratio	:	80dB (Typical)
Channel Separation	:	65dB (Typical)
Operation Distance	:	Up to 100 feet

NOTE:**1. Federal Communication Commission Interference Statement**

This equipment has been tested and found to comply with the limits for a Class B digital device, pursuant to Part 15 of the FCC Rules. These limits are designed to provide reasonable protection against harmful interference in a residential installation.

This equipment generates, uses and can radiate radio frequency energy and, if not installed and used in accordance with the instructions, may cause harmful interference to radio communications. However, there is no guarantee that interference will not occur in a particular installation. If this equipment does cause harmful interference to radio or television reception, which can be determined by turning the equipment off and on, the user is encouraged to try to correct the interference by one of the following measures:

- Reorient or relocate the receiving antenna.
- Increase the separation between the equipment and receiver.
- Connect the equipment into an outlet on a circuit different from that to which the receiver is connected.
- Consult the dealer or an experienced radio/TV technician for help.

FCC Caution: To assure continued compliance, any changes or modifications not expressly approved by the party responsible for compliance could void the user's authority to operate this equipment. (Example - use only shielded interface cables when connecting to computer or peripheral devices).

1.1 FCC Radiation Exposure Statement

This equipment complies with FCC RF radiation exposure limits set forth for an uncontrolled environment. This equipment should be installed and operated with a minimum distance of 20 centimeters between the radiator and your body.

This device complies with Part 15 of the FCC Rules. Operation is subject to the following two conditions:

(1) This device may not cause harmful interference, and (2) This device must accept any interference received, including interference that may cause undesired operation.

LIMITED WARRANTY

PARAGON PRODUCTS INTERNATIONAL INC. (The Company) warrants to the original retail purchaser of this product that should this product proven to have defects in materials or workmanship for a period of one year from the date of purchase, Paragon will repair such defects or replaced this product with one of similar features and price, without charge for parts and repair labor. Any product which has been subject to misuse, improper installation, accidental damage or removable parts are excluded from this warranty.

How to Obtain Service

Should this product require service, please return the product with proof of warranty coverage (e.g. dated bill of sale), copy of warranty card, the return sheet with a brief explanation of the problem, to the company at the address shown below at transportation prepared by the retail purchaser:

Paragon Products International Inc.

2168 S. Atlantic Blvd., #312

Monterey Park, CA 91754

U.S.A.

Call at: 1-800-xxxx or email at: info@paragon-us.com

<http://www.promowide.com>

This warranty gives you specific legal rights and you may have other legal rights that vary from state to state.