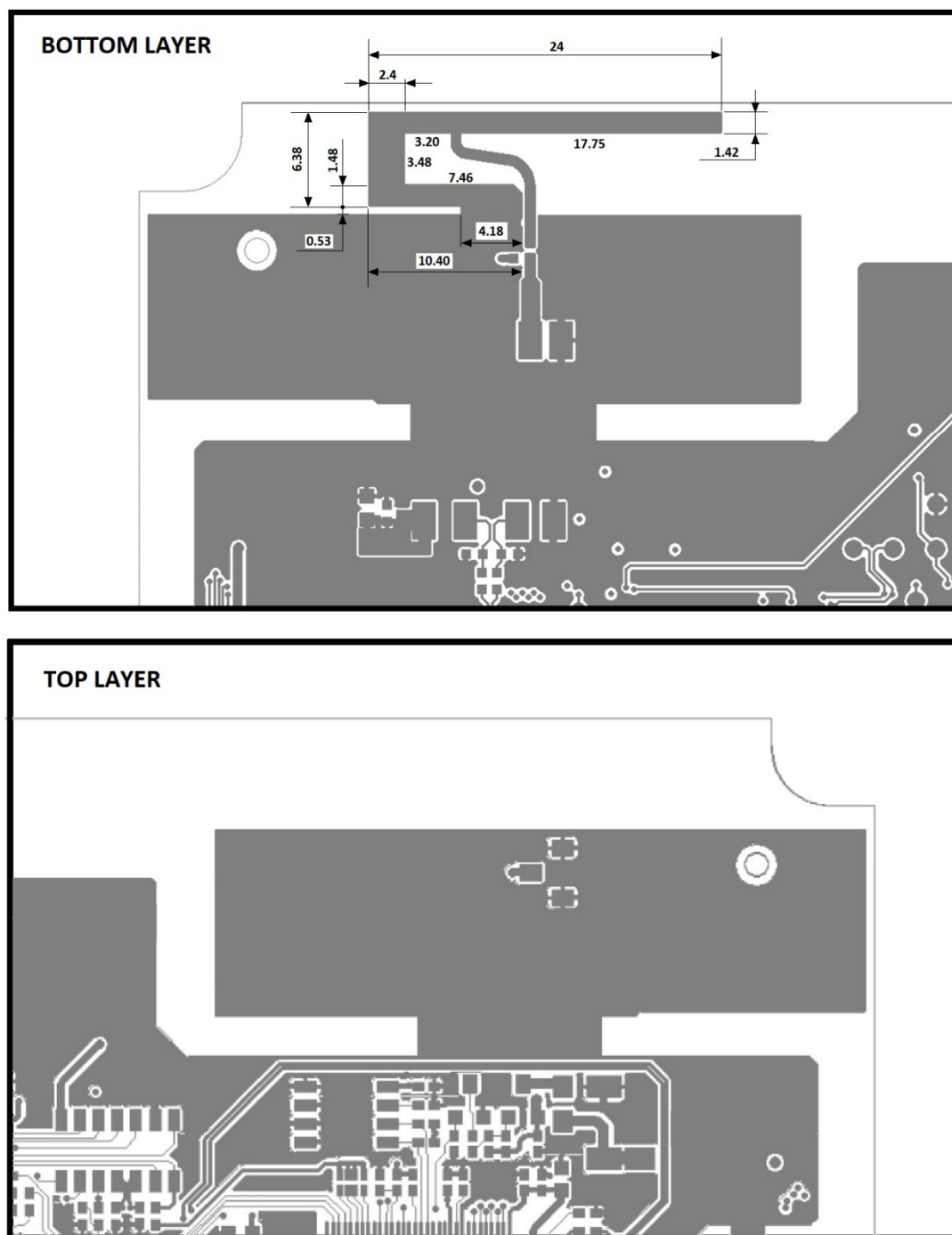


ANTENNAS INFORMATION

1. WI-FI ANTENNA

The 2.4 GHz Wi-Fi antenna is a PIFA antenna with a maximum gain about 2dBi. It's physically realized on main PCB. The substrate of the 6-layers PCB is a FR4 with a thickness of 1.6mm.

The dimensions of the antenna are shown in FIG 1.



Dimensions in mm

FIG 1

2. RFID ANTENNA

The 13,56MHz RFID antenna is a loop antenna with connected center tapping (to ground). It is physically realized on 4 of 6 layers that comprise the PCB. On Top Layer and Bottom Layer there is the shielding of the loop antenna. The shielding and the center of the loop antenna are connected to ground directly. The loop antenna is spread over two inner layers (layer L2 and layer L3, see FIG 2). For the antenna dimension see FIG 3.

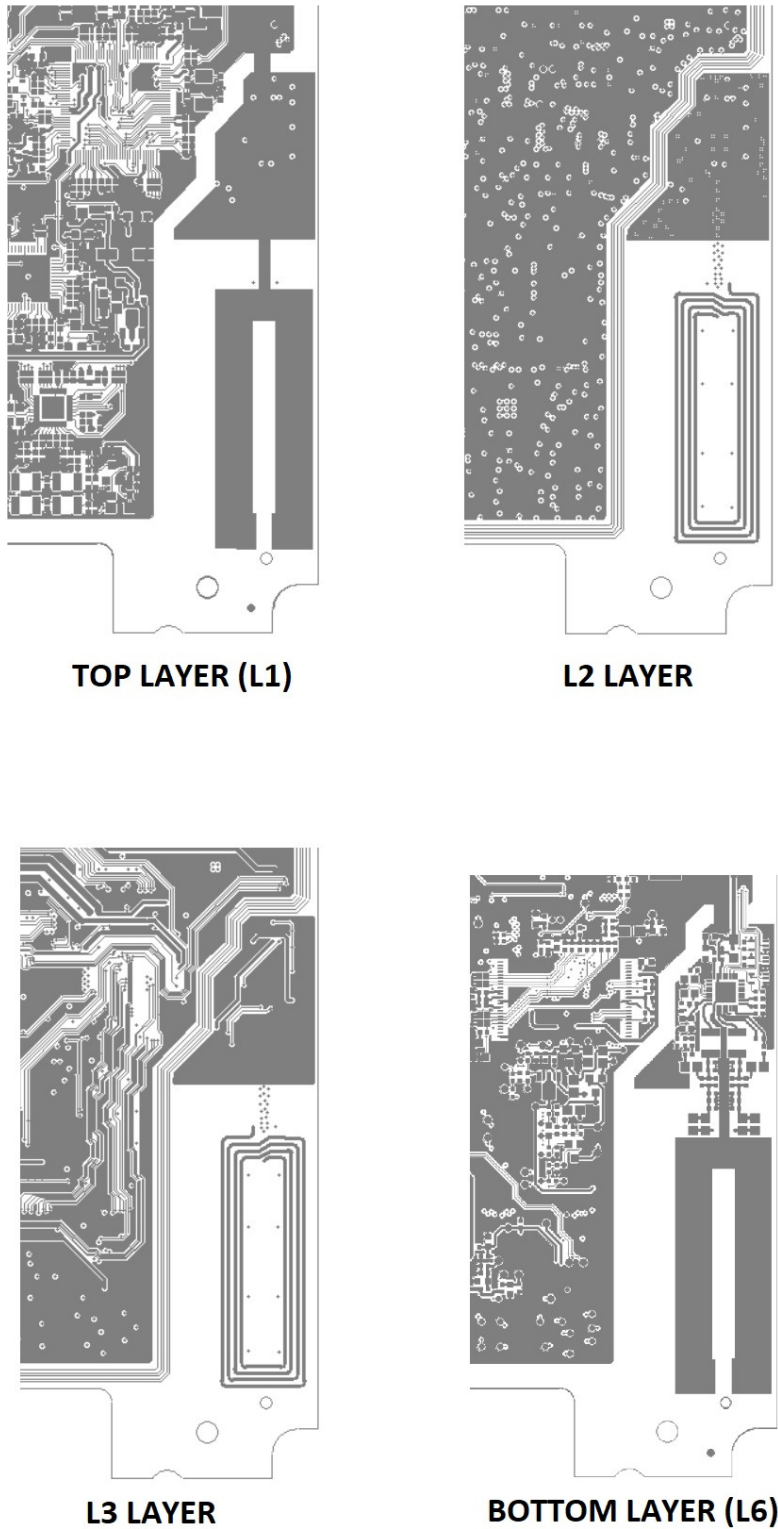


FIG 2

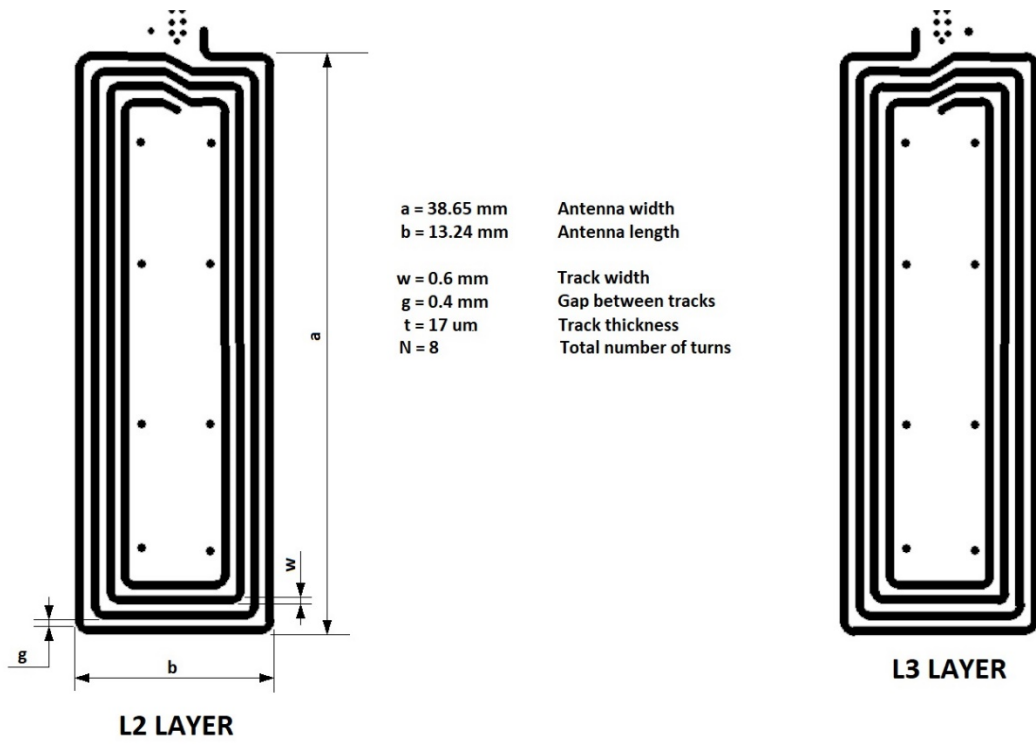


FIG 3