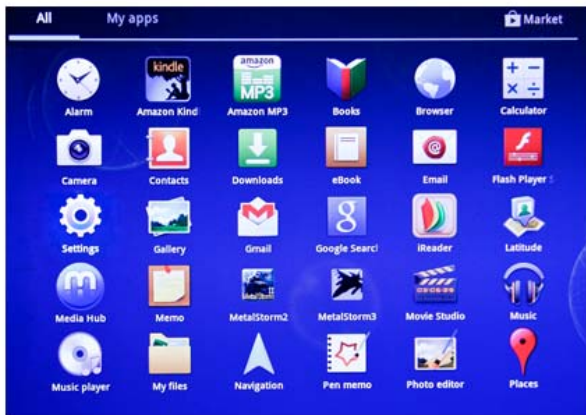


# User Guide

1-Charge keyboard 3-4 hours before first use.

2- Go to settings.



3- Go to wireless and networks

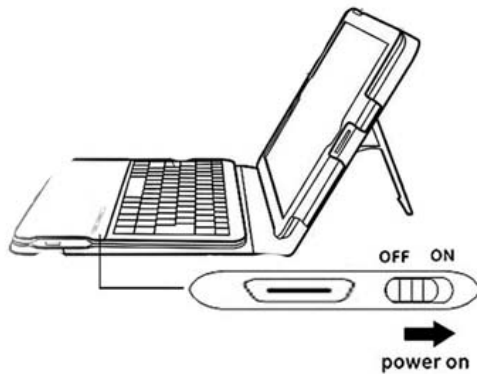


4- Go to bluetooth and make sure bluetooth is on.



# User Guide

5- Turn on keyboard.



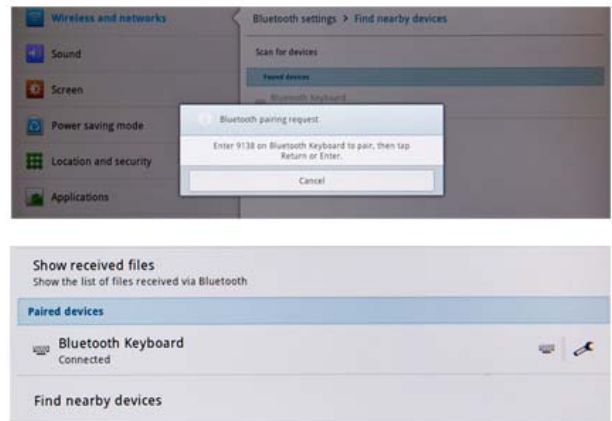
6- Press the pair button.



7- Tap/touch "Bluetooth Keyboard" words shown on the screen of your iPad.



8- Enter the 4 digit code shown on the screen of your iPad on your keyboard and press Enter. The Keyboard should be paired.



Note: The micro USB port support only charging function.

## FCC WARNING

This device complies with Part 15 of the FCC Rules. Operation is subject to the following two conditions:

- (1) This device may not cause harmful interference, and
- (2) this device must accept any interference received, including interference that may cause undesired operation.

NOTE 1: Any changes or modifications to this unit not expressly approved by the party responsible for compliance could void the user's authority to operate the equipment.