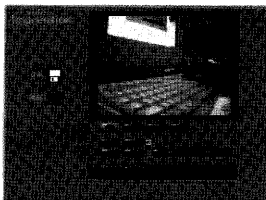


### Translate the play mode



### Video Frequency

Through snatch the video frequency, the digital camera can take the digital video and save in the hardware for enjoyness.



Through the Vedioimpression 1.6, you can take and direct the family video by yourself, and through its Internet function, you can email it to your friends!



Model Number : 99027




**Mini Digital Camera**

**Serendipity (USA) Ltd**


PO Box 1701, Grand Central Station,  
New York, NY 10163, USA

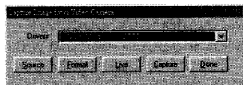
Tel: (212) 391-1100

## Software of Photo Editor

Use "Photo Impression4" software to edit the photo. Please click the button "Camera/Scanner" [  ] and select [  ] first, then click the icon of download photos [  ], you can edit the photos downloaded this time.

## PC Camera Functions

Click (Dual-Mode DSC(2770)), and there will pop-up a dialog box below the page; click [video camera]  and the dialog box [capture the images from video camera] will automatically pop-up. please select (Dual-Mode DSC(2770))driver for this camera.



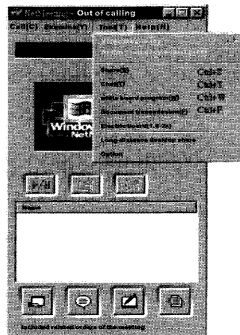
### Functions Introduction

1. Sources  
You can set Brightness ,Contrast...device origin, device set and camera control; and please select(Default).
2. Format  
You can adjust the resolution and the color mode of images; the color mode is suggested to select[RGB-24].
3. Live  
You can browse real-time videos or images.
4. Capture  
When you play videos, click and select this function to acquire the single picture and store it in the album.
5. Done  
Finish the PC camera functions

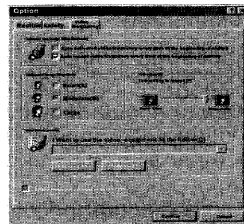
## Video Conference

This digital camera can be used as a PC camera to conduct image transmission or hold online video conference, you are only required to:

1. Use the USB cable to connect the camera and the USB Interface of PC;
2. Run the video conference software Microsoft Netmeeting on your computer; Click[TOOL] and press [OPTION];
3. Select the corresponding video devices (see the below diagrams) to hold the video conference.



(1)



(2)

## VedioImpresion1.6

VedioImpresion is an easy used video edit software. It can edit new video files base to the current video files, and the content of it will be display on the desk. It can be used to the digital video edit and it has the same help function of the PhotoImpression. It makes you very easy to master the using method.

## Document Addition



# Mini Digital Camera

## Overview

Thank you for purchasing the digital camera. It not only can take photos also has the built-in PC camera functions. This camera is equipped with a 16Mbit built-in ROM; if you want the digital photos in the camera to be downloaded onto your computer, you are only required to connect the USB cable to your computer and camera. It is also possible to use the built in PC camera functions to hold a video conference via the internet, enabling you to have a face to face online conversation with others.

## Getting Started

This camera is equipped with standard accessories including ,batteries,pouch,CD and USB cable. The following section will explain how to use them on the camera.

## Replacement of Batteries

The battery box is located on the base of the camera. and you must use AAA batteries .If you want to replace the batteries:

1. Open the battery box.
2. Load the batteries correctly, when you load the batteries, please place them according to the pole directions on the battery box, close the battery box cover

## Precautions

When you use the USB cable to connect the camera with a computer, it is possible not to use the batteries because the camera can use the power provided by the computer through the USB interface.

## Warning

1. If the battery cover is opened accidentally and thus causes a power cut the photo's in the camera will be lost.
2. If you do not use the camera for quite a long period, please take out the batteries in case of discharging or corrosion of the batteries.
3. Batteries are a flammable product and should not be exposed to fire.
4. Please do not mix used and new batteries ,only alkaline batteries are recommended.

## Automatic Energy Saving Facility

In order to preserve the life span of the batteries the camera will power down after 30 seconds.

## Software Installation

### NOTE:

If your computer system is Win98 I, you must setup the document name E:/Win/DIRECTX 8.1b REDIST PACKAGE.EXE(E is CD driver) before you setup driver programme of the digital camera.

Please place the CD into your CD-ROM drive ,and the software will automatically run the installation wizard, please follow the directions of the installation wizard. If the auto run function in your computer fails to load the software, you must manually install the program according to the following steps.

1. Go to your start icon on the main desktop and locate CD ROM icon in the windows explorer program, this is normally locate in the D:or E: Driver.
2. Please follow the instructions of the installation wizard.

## TO Take Photo's

1. Press the function button to power up.
2. Press the camera and the LCD will illuminate to show the camera is operational.
3. Slide the view finder up and point at the desired object of photography.
4. Hold the camera steady and press the shutter button to take photos.
5. When you hear the buzzer beep once ,this indicates that you have already taken a photo, and then you can go on taking photos .
6. When the digital camera is fully loaded with photos, if you press the shutter button again, the buzzer will give out a continuous beeping sound indicating the camera is full.

### Note:

When taking photos the loudish beep indicates the success of shooting and the lower beep will indicate the failure of shooting .

## Camera Functions Operation

The function operation of this digital camera should be conducted under the working state of the digital camera. If the digital camera is in the energy saving mode, please press the function button once to start the camera and get it into a working state, and then conduct the following camera function operation.

### Turn off the camera

1. Press "Function" button once, LCD will display "oF"
2. Press the "Shutter" button within 5 seconds to turn off the camera swiftly.

### Auto-shoot Mode

1. Press "Function" button twice and the LCD will display "5L"
2. Press "Shutter" button within 5 seconds to enter the 10-second time set auto-shoot state, and the digital camera will give out a sound every second.
3. After 10 seconds, the camera will take the picture.

#### Note :

When the digital camera is fully loaded, this function is not applicable .

### Continuous Photography Mode

1. press "Function" button three times and the LCD will display "L"
2. Press Shutter button continuously or hold down within 5 seconds to start the continuous photography.
3. Press "shutter" button to stop continuous photography.

#### Note:

During the continuous photography period, the incorrect exposure could appear due to the short of rays.

### Image Quality Shift Mode

1. If you press the function button six times the camera will operate in low resolution "Lr", where it is possible to take 80 photographs. When the camera is switched on it is automatically in High Resolution "Hr" with a 20 photograph capability.
2. Press the Shutter button twice in 5 seconds and the shift of image quality can be achieved.

### Light System Shift

1. Press the "Function" button seven times, LCD will display "60"
2. Press the "Shutter" button within 5 seconds and the shift of 50/60Hz light system can be achieved.

### Delete the last photo

1. Press the "Function" button five times, LCD will display "L1"
2. Press the "Shutter" button within 5 seconds to delete the last photo.

### Delete All photos

1. Press "Function" button four times and the LCD will display "L4"
2. Press the Shutter button once in 5 seconds to delete all the photos in the camera.

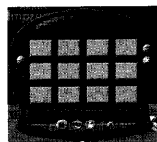
#### Note:

If you do not press Shutter button within 5 seconds ,the cancellation operation will not be executed and digital camera will return to it' s normal working state.

### Download Photos

When your photo memory device is fully engaged, you can delete the photos to take more photos ,before you delete the photos you can transmit them into the computer for storage first.

1. Use USB cable to connect the computer with the digital camera, and the buzzer will give a beep sound indicating the connection is correct.
2. Select the folder "My DSC" ,You should have three programs in the folder (My DSC, PC Cam and Read Me Files) select "My DSC".



3. Click the icon of a pink camera on the bottom left of the window this opens up the "download photos" menu, from here you can select to "download all photos", or however many you decide by selecting the "just download" option.



# USER MANUAL

This device complies with Part 15 of the FCC Rules. Operation is subject to the following two conditions: (1) This device may not cause harmful interference, and (2) This device must accept any interference received, including interference that may cause undesired operation.

**Warning:** Changes or modifications to this unit not expressly approved by the party responsible for compliance could void the user's authority to operate the equipment.

**NOTE:** This equipment has been tested and found to comply with the limits for a Class B digital device, pursuant to Part 15 of the FCC Rules. These limits are designed to provide reasonable protection against harmful interference in a residential installation. This equipment generates, uses and can radiate radio frequency energy and, if not installed and used in accordance with the instructions, may cause harmful interference to radio communications.

However, there is no guarantee that interference will not occur in a particular installation. If this equipment does cause harmful interference to radio or television reception, which can be determined by turning the equipment off and on, the user is encouraged to try to correct the interference by one or more of the following measures:

- ☐ Reorient or relocate the receiving antenna.
- ☐ Increase the separation between the equipment and receiver.
- ☐ Connect the equipment into an outlet on a circuit different from that to which the receiver is needed.
- ☐ Consult the dealer or an experienced radio/TV technician for help.

Shielded cables must be used with this unit to ensure compliance with the Class B FCC limits.