

Instructions for Viewing System FCC ID Label

1. Connect the RS-232 port on a laptop or other computer to the RS-232 serial console port of the BTS using a null modem cable. On the HP Proliant servers, the serial console port is located in the rear center of the server surrounded by a green label. The two figures below show the null modem cable connected to the serial console port on the HP Proliant server.



Figure 1: Null modem cable connected to the serial console port of the HP Proliant server



Figure 2: Close-up of a null modem cable connected to the serial console port of the HP ProLiant server.

2. Turn on power to the BTS Server if it was turned off. Wait at least one minute for the server to finish booting.
3. Run a serial communications program such as HyperTerminal, bundled for free in Microsoft Windows systems, on the client laptop. Select to use the RS-232 port for communications (in HyperTerminal under Windows, this corresponds to selecting COM3 or another COM port in the initialization dialog box). Set the RS-232 port to 115200 bits per second, 8 data bits, no parity bits, 1 stop bit, and hardware flow control.
4. Press the Enter key in the active HyperTerminal session. The BTS will respond by printing out identifying information and prompting for a login. A screen shot of an example HyperTerminal session is shown below.

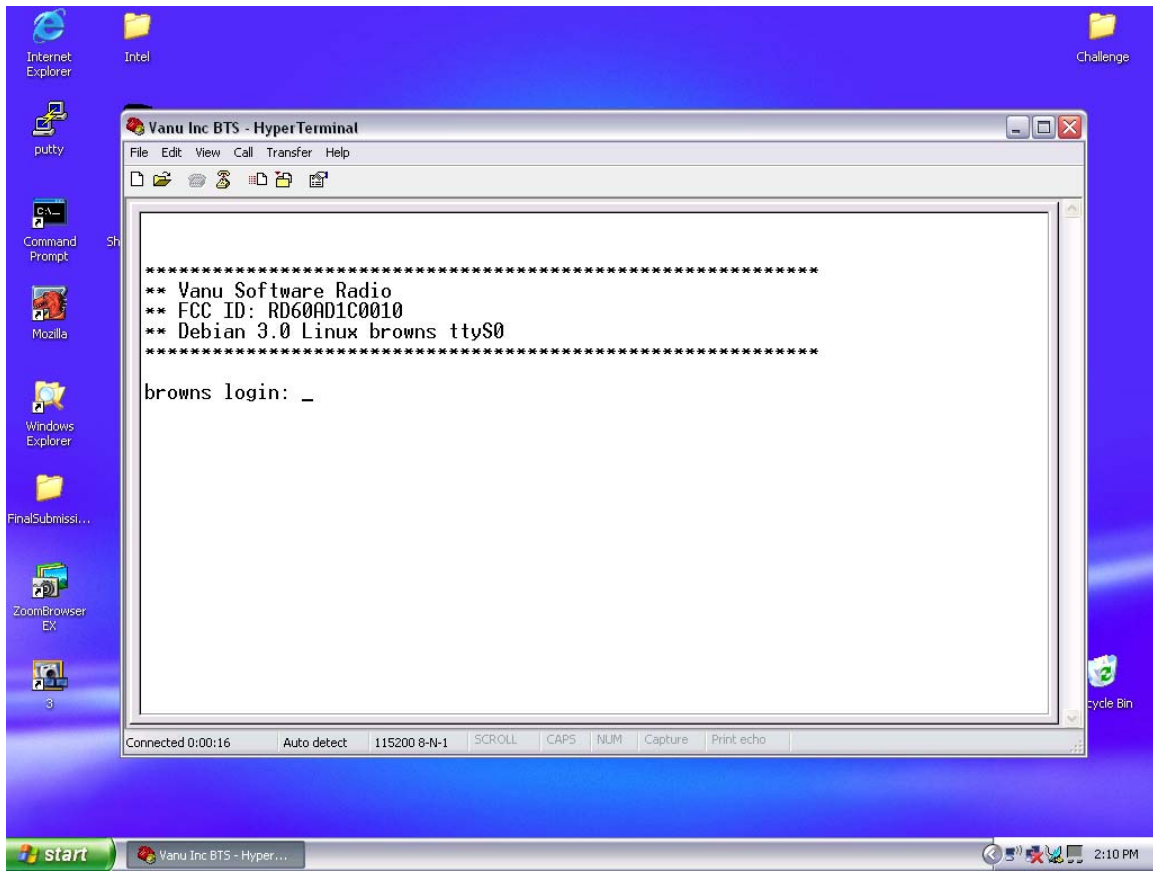


Figure 3: Screenshot of HyperTerminal view of system FCC ID