

Cabinet Interior



The image shows the internal components of a server chassis. A green motherboard is visible at the top, with various cables connected to it. A black power supply unit (PSU) is mounted on the right side, with a label that reads: "DC UPS-200-7050 12VDC 1.3A Charge Bat. cutoff: 9.70Vdc AC Fuse F1: 3A, 250Vac AC Fuse F4: 2A, 250Vac DC Fuse F2: 15A auto". Below the PSU, a silver metal plate contains a "BATTERY FUSE" and a "15A, 250VDC" fuse. The front panel of the chassis features several ports and labels: "ETHERNET", "USB", "ALARM", "BATT. OK", "AC OK", "PWR1-NG", "PWR2-COM", "PWR3-NG", "PWR4-NG", "PWR5-COM", "PWR6-NG", "PWR7-NG", "PWR8-COM", "PWR9-NG", "PWR10-COM", "PWR11-NG", "PWR12-COM", "PWR13-NG", "PWR14-COM", "PWR15-NG", "PWR16-COM", "PWR17-NG", "PWR18-COM", "PWR19-NG", "PWR20-COM", "PWR21-NG", "PWR22-COM", "PWR23-NG", "PWR24-COM", "PWR25-NG", "PWR26-COM", "PWR27-NG", "PWR28-COM", "PWR29-NG", "PWR30-COM", "PWR31-NG", "PWR32-COM", "PWR33-NG", "PWR34-COM", "PWR35-NG", "PWR36-COM", "PWR37-NG", "PWR38-COM", "PWR39-NG", "PWR40-COM", "PWR41-NG", "PWR42-COM", "PWR43-NG", "PWR44-COM", "PWR45-NG", "PWR46-COM", "PWR47-NG", "PWR48-COM", "PWR49-NG", "PWR50-COM", "PWR51-NG", "PWR52-COM", "PWR53-NG", "PWR54-COM", "PWR55-NG", "PWR56-COM", "PWR57-NG", "PWR58-COM", "PWR59-NG", "PWR60-COM", "PWR61-NG", "PWR62-COM", "PWR63-NG", "PWR64-COM", "PWR65-NG", "PWR66-COM", "PWR67-NG", "PWR68-COM", "PWR69-NG", "PWR70-COM", "PWR71-NG", "PWR72-COM", "PWR73-NG", "PWR74-COM", "PWR75-NG", "PWR76-COM", "PWR77-NG", "PWR78-COM", "PWR79-NG", "PWR80-COM", "PWR81-NG", "PWR82-COM", "PWR83-NG", "PWR84-COM", "PWR85-NG", "PWR86-COM", "PWR87-NG", "PWR88-COM", "PWR89-NG", "PWR90-COM", "PWR91-NG", "PWR92-COM", "PWR93-NG", "PWR94-COM", "PWR95-NG", "PWR96-COM", "PWR97-NG", "PWR98-COM", "PWR99-NG", "PWR100-COM".

ACDC Supply & Battery



DCDC Supplies & CDMA Processor



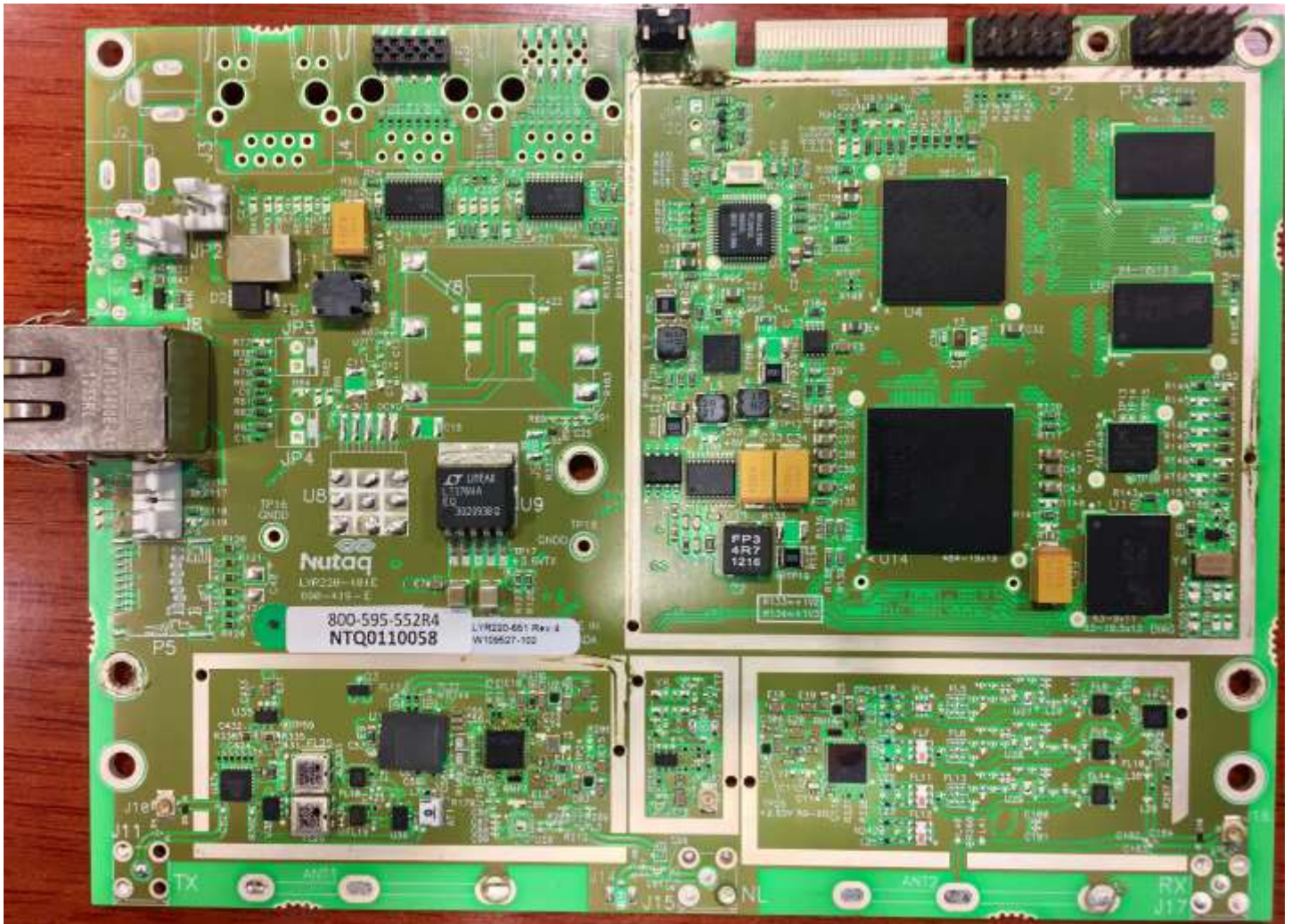
Radio Interior



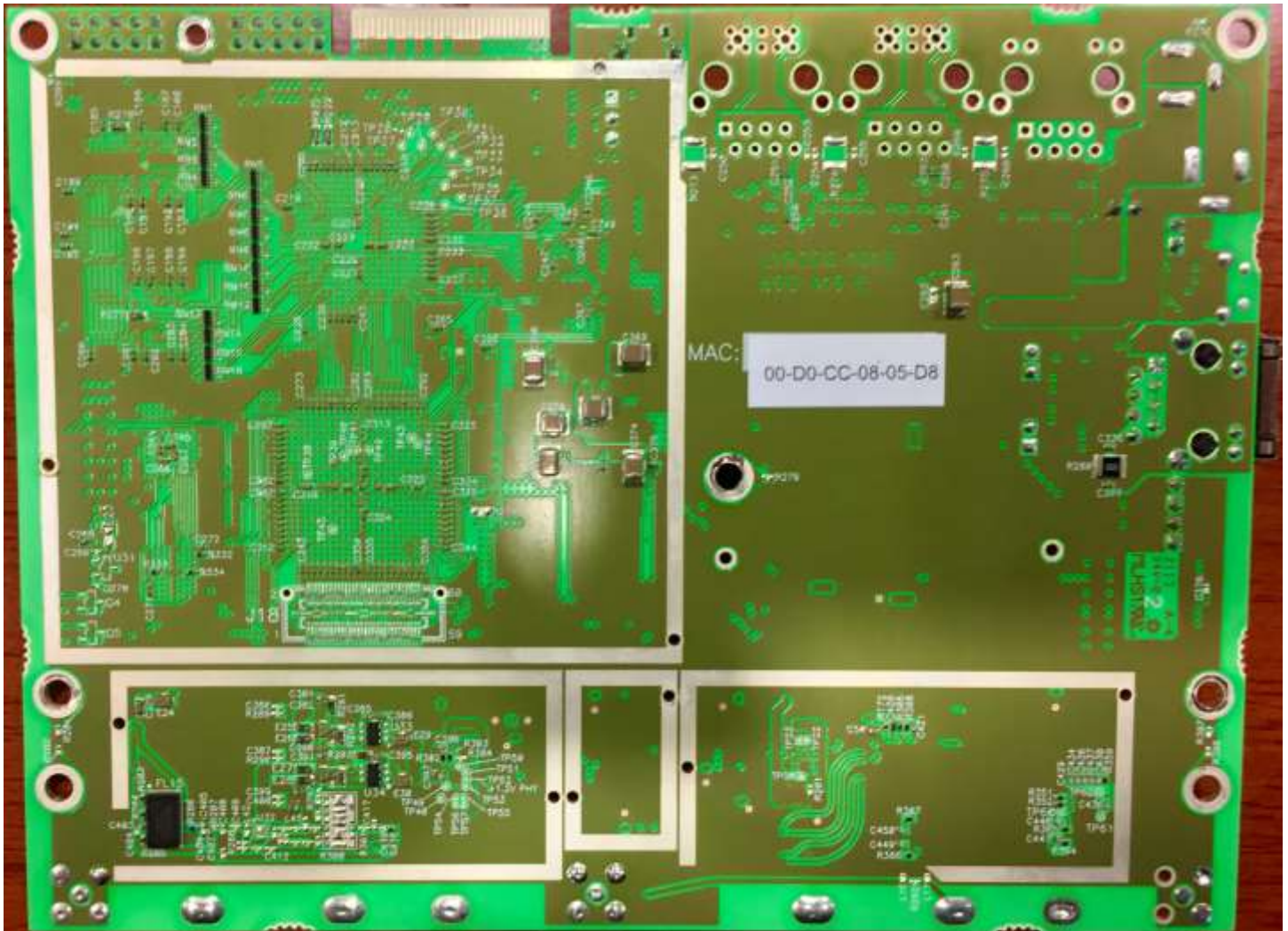
CDMA Slave Top with Heatsink Removed



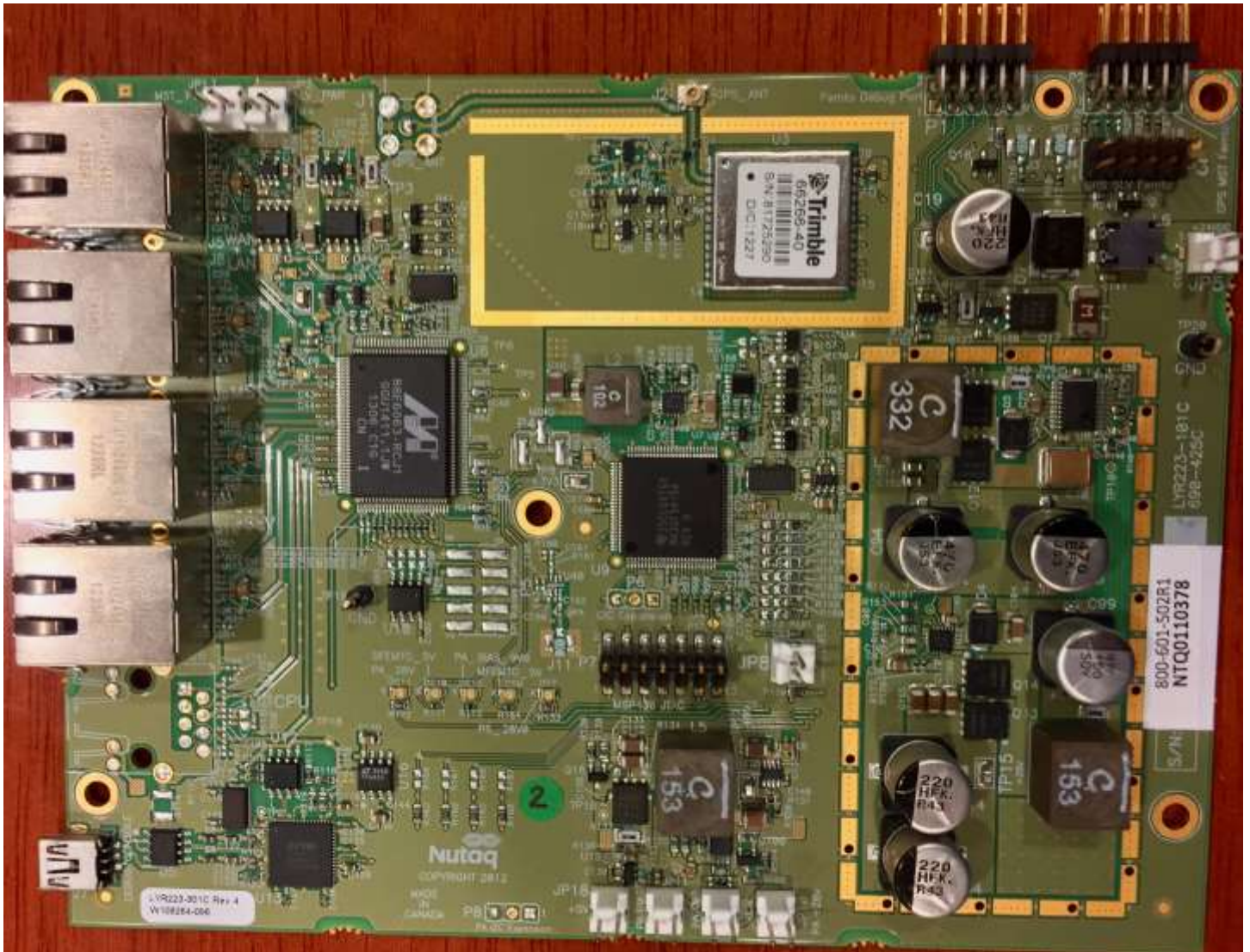
GSM Master Top with Heatsink Removed



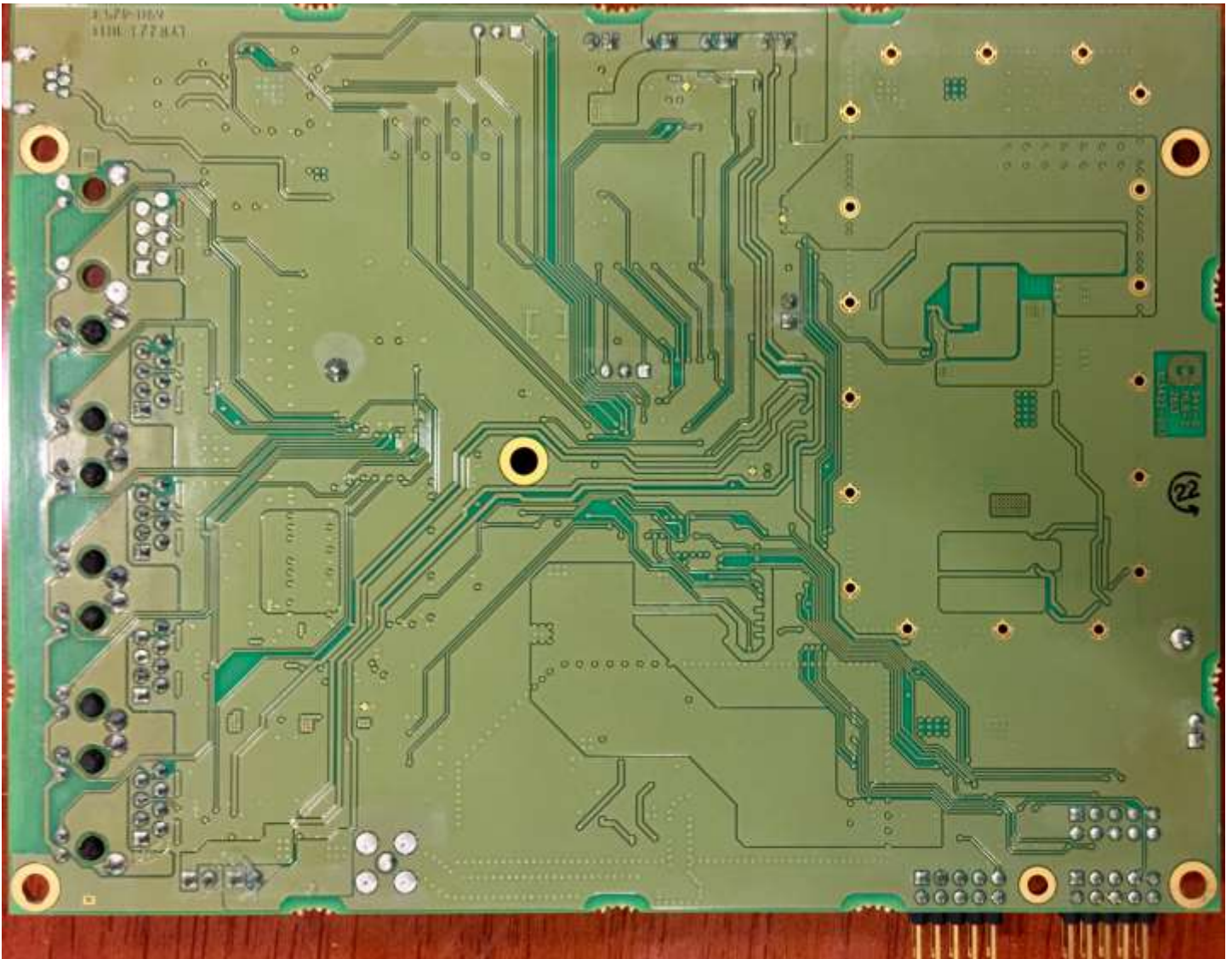
GSM Master Bottom



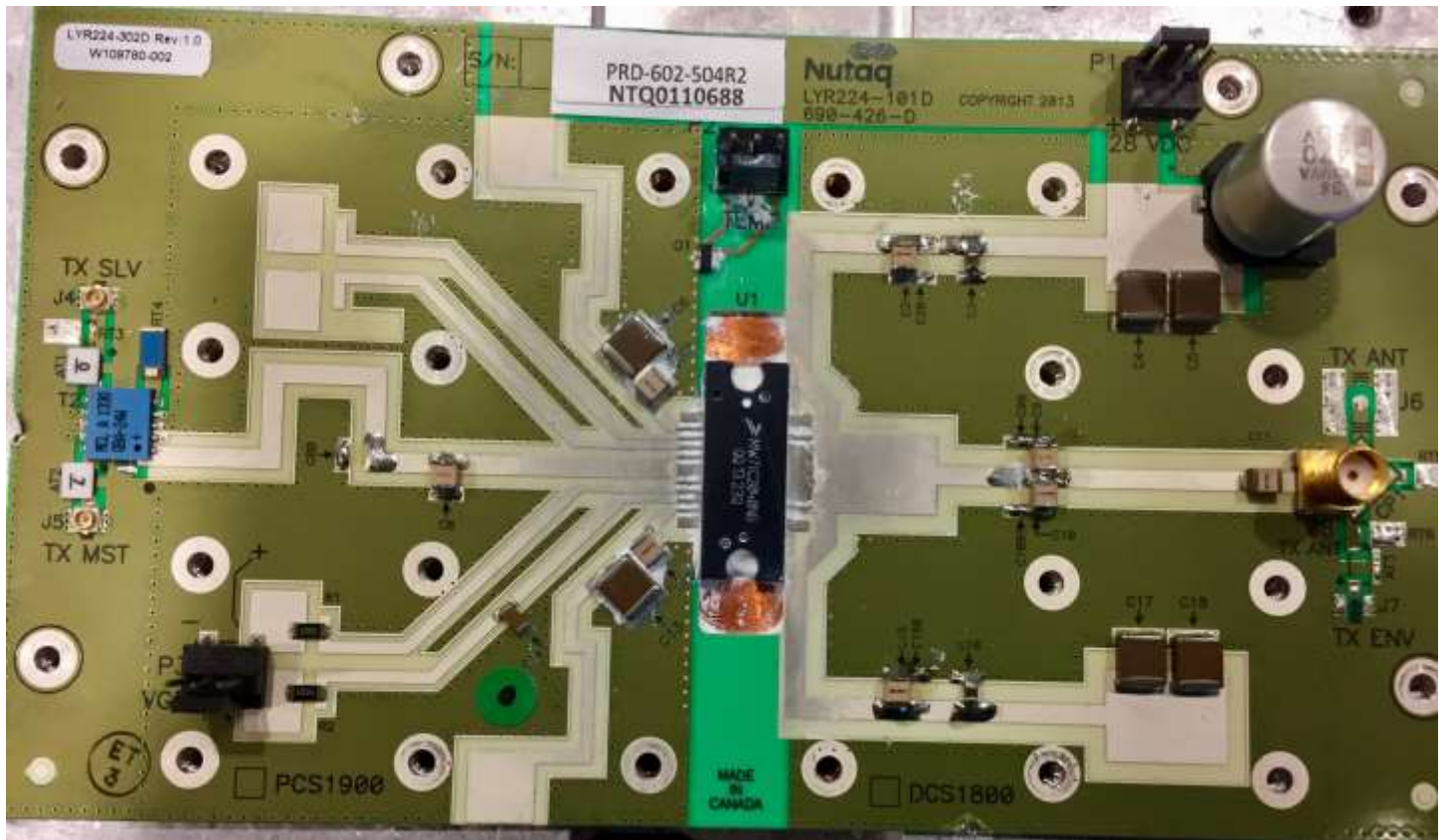
Power & Switching Top



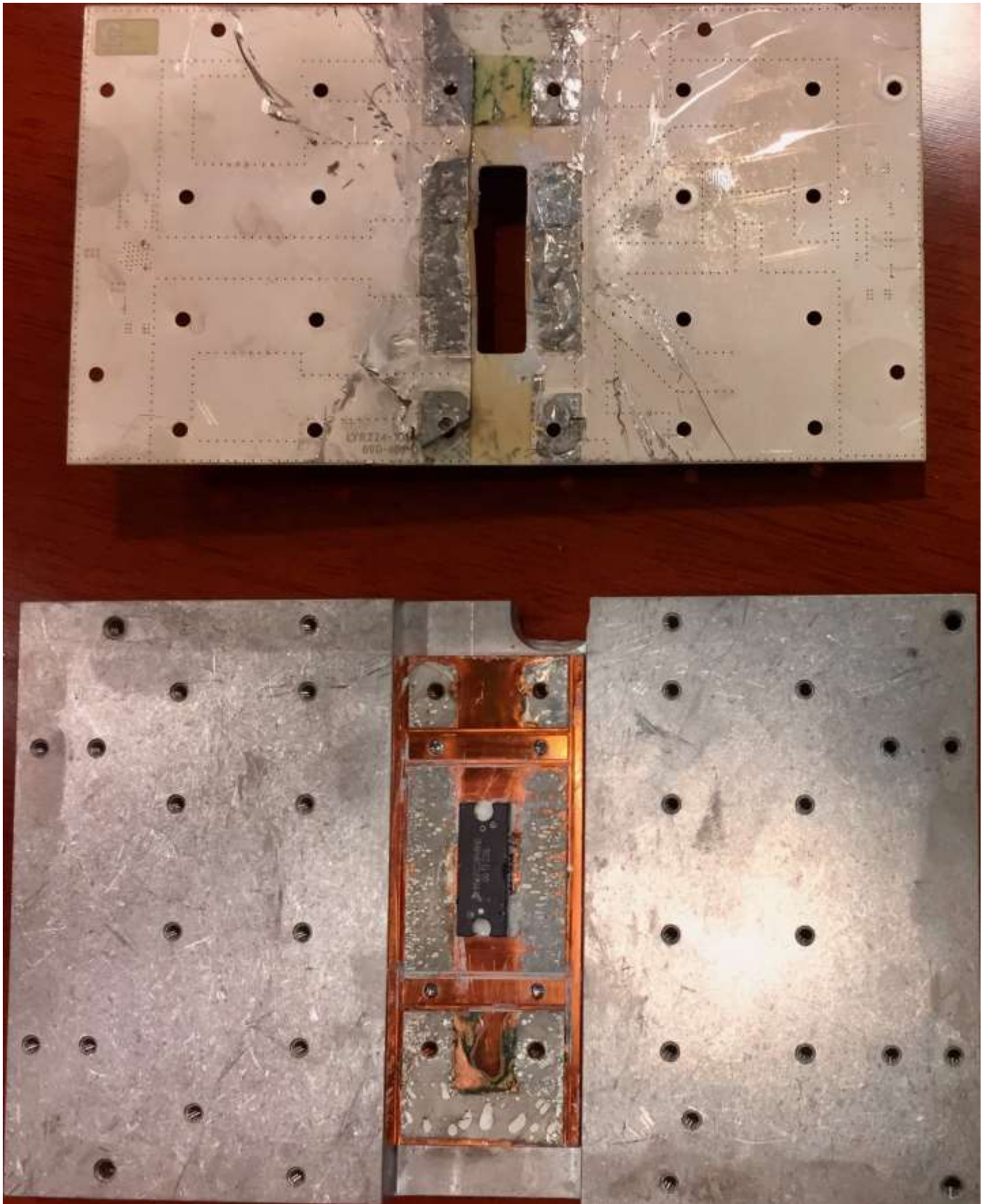
Power & Switching Bottom



TX PA Top



TX PA Bottom & PA Device Soldered to Heatsink



RX Front-End Top (Left) & TX Isolator Top (Right)



RX Front-End Bottom (Left) & TX Isolator Bottom (Right)

