

# Mini Radio Control Mouse

## Instructions and Care

#20706 (Gray, 49MHz)  
#20702 (White, 27MHz)

Thanks for purchasing your new Mini R/C (Radio Control) Mouse.  
Please carefully read the following instructions before use.

This product is recommended for ages 8 and up.

### Battery Installation

This product requires 4 AA batteries: 2 for the transmitter, and 2 for the charger.  
Note: The mouse contains an internal rechargeable battery and does not require additional batteries. You will need a small screwdriver (not included) to replace charger and transmitter batteries. Batteries should be replaced under adult supervision.

#### Charger Batteries (See figure B)

1. Unscrew and remove the battery cover.
3. Remove expired batteries and replace with 2 new AA alkaline batteries.  
Be sure to align "+" and "-" properly.
4. Replace battery cover.

#### Transmitter Batteries (See figure C)

1. Slide cover to remove from backside of transmitter.
2. Remove old batteries and replace with 2 new AA alkaline batteries.  
Be sure to align "+" and "-" properly.
3. Replace battery cover.

### BATTERY WARNING

Be sure to dispose of batteries safely and correctly.  
Do not dispose of old batteries in fire. Batteries may leak or explode.  
For best performance, use only alkaline batteries.  
Do not use rechargeable batteries.  
Do not mix old and new batteries.  
Do not mix alkaline batteries with either standard (carbon zinc) or rechargeable (nickel cadmium) batteries.  
Exhausted batteries should be removed from the toy.

#### Transmitter Controls (See figure D)

Press the left buttons to drive forward or reverse.  
Press the right buttons to turn right or left.

#### Charging your Mouse (See figure E)

The Mini R/C Mouse has an internal rechargeable battery. Charge before each use by attaching it to the Charger as shown. Align connection tabs and push Mouse firmly into position on charger. The indicator light shows that the Mouse is charging. A full charge should take about two minutes. The charger will automatically shut off when the battery is fully charged. When the light goes off, charging has been completed.

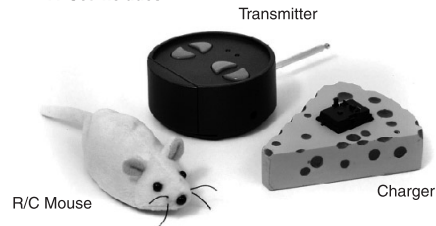
#### Steering Alignment (See figure F)

If your mouse does not drive straight, use the alignment trim to adjust the steering.

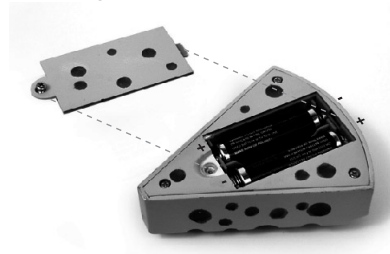
### Safety and Playing Tips

Mouse is designed to run only on smooth, clean surfaces.  
When driving, avoid long pile carpet, pet hair, and dirty surfaces.  
Never drive on the street.  
Do not play outdoors during thunderstorms.  
Do not drive in sand or through water or snow.  
Be careful not to drive out of transmitter frequency range- You may lose control of the Mouse.  
Wipe clean with a dry towel after play. Do not use chemicals or detergents as they can damage the body.  
Do not store vehicles or transmitter in direct sunlight.  
Keep fingers, hair, and loose clothing away from spinning wheels.  
Operation of multiple vehicles in close proximity may cause interference or poor performance.  
High voltage power lines may cause radio interference.  
If your mouse appears to lose power or run time, try recharging and/or replacing the batteries in the charger.  
If your Mouse appears to lose range, try replacing the batteries in the transmitter.

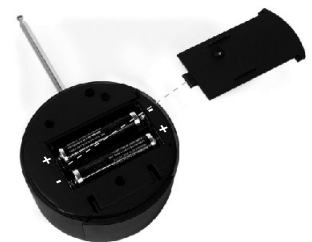
#### A. Set Includes



#### B. Charger Batteries



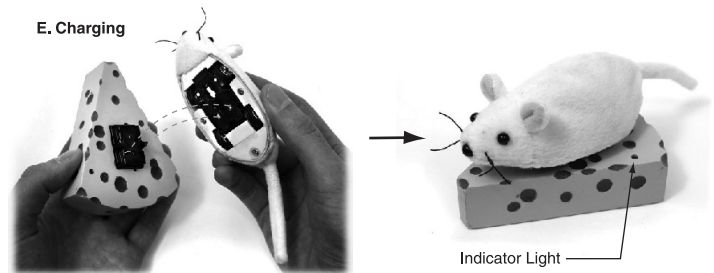
#### C. Transmitter Batteries



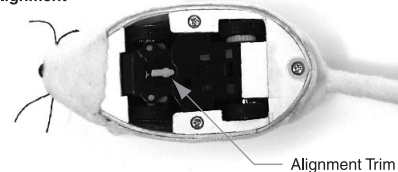
#### D. Transmitter Controls



#### E. Charging



#### F. Steering Alignment



### ⚠ WARNING:

CHOKING HAZARD - Small Parts.  
Not for children under 3 years.

### ⚠ CAUTION:

SHARP EDGES - Metal contacts on charger have sharp edges.

© 2003 Senario LLC, McHenry IL USA  
All Rights Reserved  
Made in China

Please keep this instruction sheet for future reference.



FCC Compliant  
ID # xxxxxxxxxx

This equipment has been tested and found to comply with the limits for a Class B digital device, pursuant to Part 15 of the FCC Rules. These limits are designed to provide reasonable protection against harmful interference in a residential installation. This equipment generates, uses and can radiate radio frequency energy and, if not installed and used in accordance with the instructions, may cause harmful interference to radio communications. However, there is no guarantee that interference will not occur in a particular installation. If this equipment does cause harmful interference to radio or television reception, which can be determined by turning the equipment off and on, the user is encouraged to try to correct the interference by one or more of the following measures:

- Reorient or relocate the receiving antenna.
- Increase the separation between the equipment and receiver.
- Connect the equipment into an outlet on a circuit different from that to which the receiver is connected.
- Consult the dealer or an experienced radio/TV technician for help.

**MODIFICATIONS NOT AUTHORIZED BY THE MANUFACTURER MAY VOID USERS AUTHORITY TO OPERATE THIS DEVICE**