

## **Pro-711 & Pro-711C User Manual**

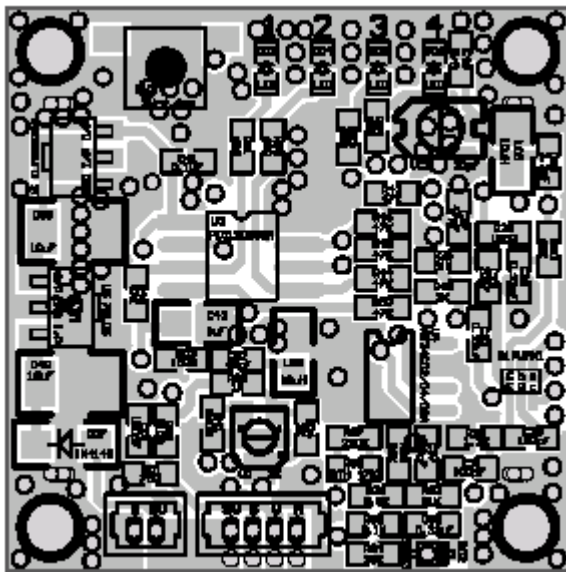
### **I. Pro-711**

The Pro-711 2.4GHZ wireless micro transmitter can convert the video & audio signals to RF signal in 2.4GHz ISM band by FM Modulation scheme and send the video and audio signals to remote side.

To avoid RF interference, there is 4 RF channels can be selected; CH1 : 2414MHZ, CH2 : 2432MHZ, CH3 : 2450MHZ, CH4 : 2468MHZ.

You can simply press the button several times to select the channel.

There are 4 LED beside the button, which indicate these 4 channel, as below chart.



The transmitter module is powered by 9V DC. The power adaptor attached will convert AC110V to DC 9V.

### **II. Pro-711C**

The Pro-711C 2.4GHZ wireless micro camera is combined with one camera module and one Pro-711 2.4GHZ wireless micro transmitter. The Pro-711C uses the camera module to convert the image to video signal and convert the voice to audio signal by microphone on the camera module, then the video and audio signals are sent to the Pro-711 2.4GHZ wireless micro transmitter, so the micro transmitter does the video & audio FM modulation and transmits the modulated signals in 2.4GHz ISM band .

The transmitter is a module only. If the module be installed inside a housing as a final product, it should state “ Contains FCC ID: RBAPRO-711” outside the housing.

### **FCC Notices**

This device complies with part 15 of the FCC rules. Operation is subject to the following two conditions:

- (1) This device may not cause harmful interference, and
- (2) This device must accept any interference received, including interference that may cause undesired operation .

FCC RF Exposure requirements:

This device and its antenna(s) must not be co-located or operation in conjunction With any other antenna or transmitter.”

NOTE: THE MANUFACTURER IS NOT RESPONSIBLE FOR ANY RADIO OR TV INTERFERENCE CAUSED BY UNAUTHORIZED MODIFICATIONS TO THIS EQUIPMENT. SUCH MODIFICATIONS COULD VOID THE USER'S AUTHORITY TO OPERATE THE EQUIPMENT.