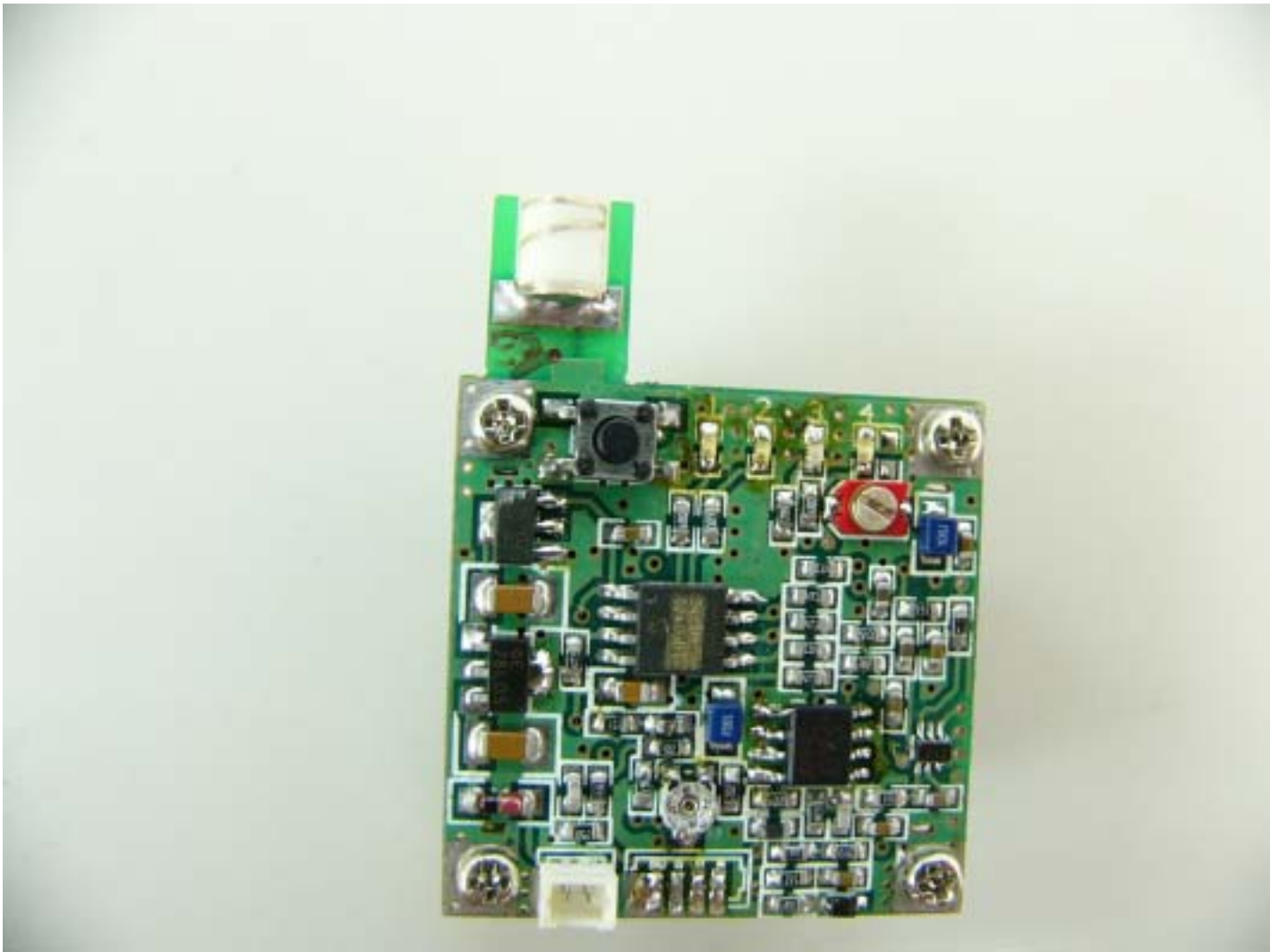


External Photos

1. Front side, with shielding , label and the data input socket in the bottom. (module only)



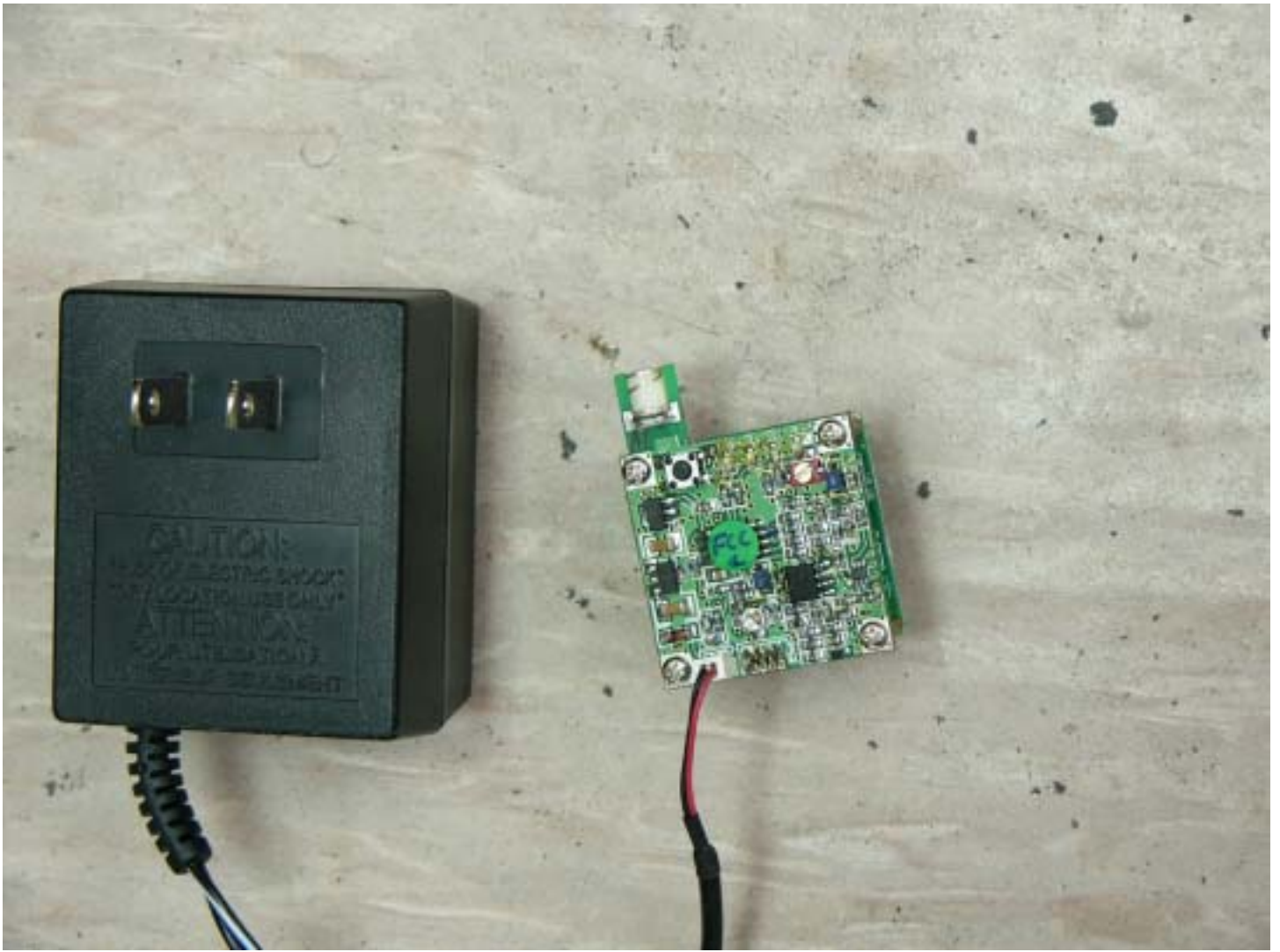
2. Back side, with 9V DC input socket in the bottom. (module only)



3. Transmitter module with Lens and Microphone, and Adaptor



4. Transmitter module with Lens and Microphone, and Adaptor , back side



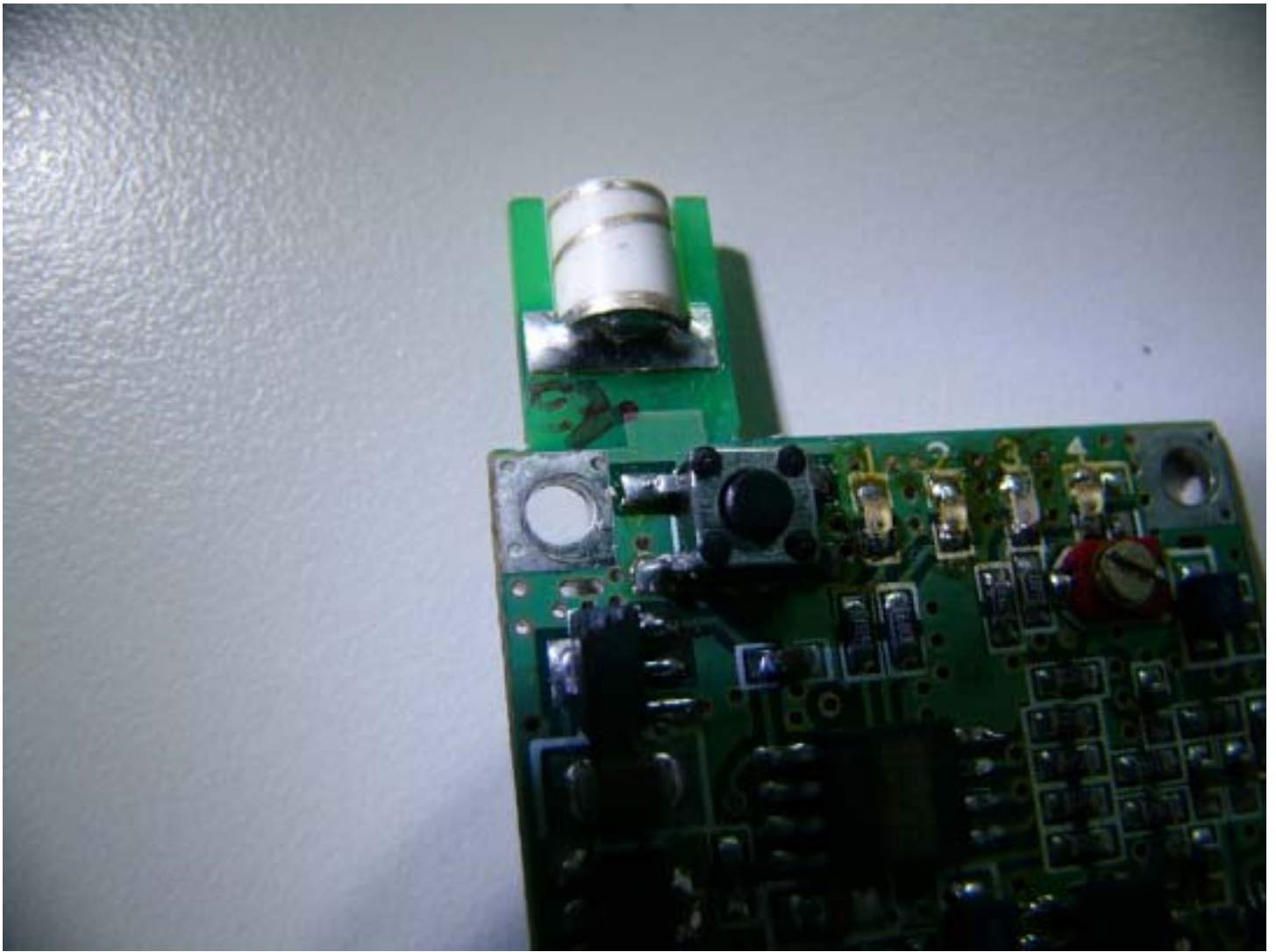
5. Detail photo of Antenna



6. Detail photo of Antenna (2)



7. Detail photo of Antenna (3)



8. Detail photo of transmitter module with lens and microphone. FCC ID shown.

