

## **Internal Photos**

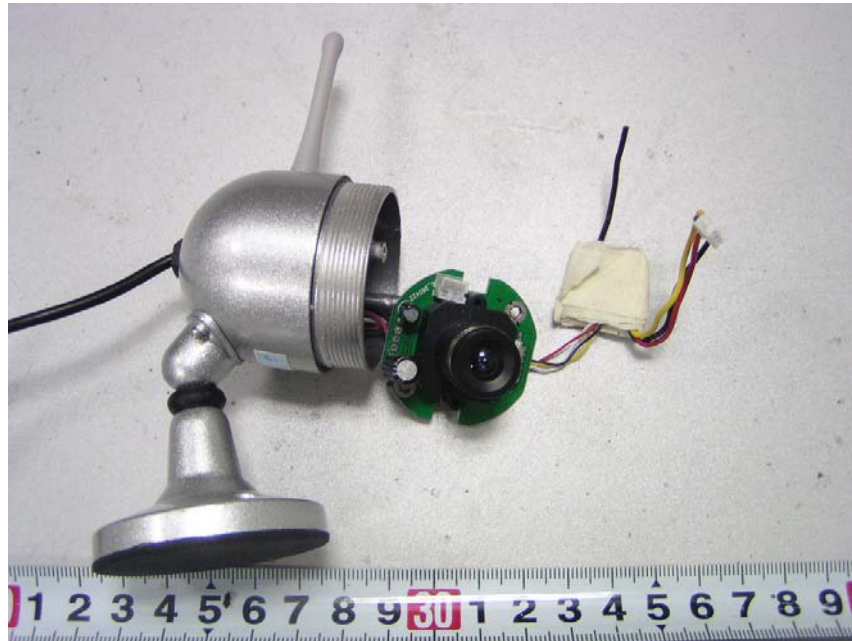
**EUT- Uncovered View**



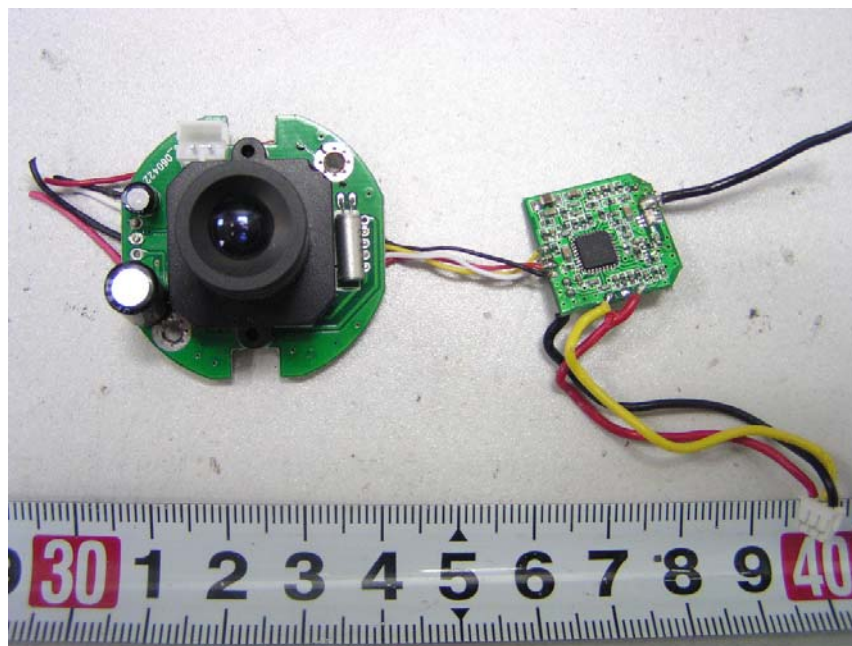
**EUT- Inside View (1)**



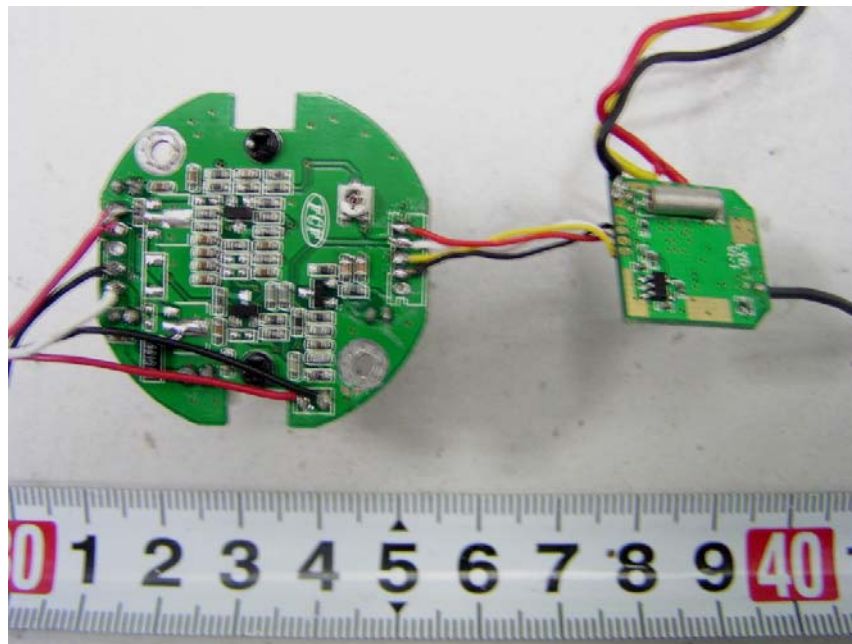
**EUT- Inside View (2)**



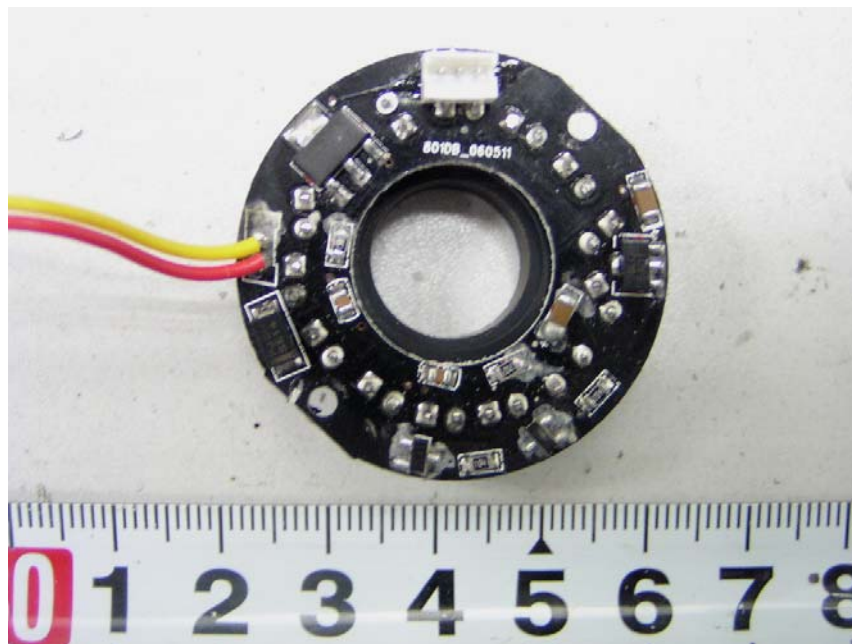
**EUT- Camera and TX part View (1)**



**EUT- Camera and TX part View (2)**

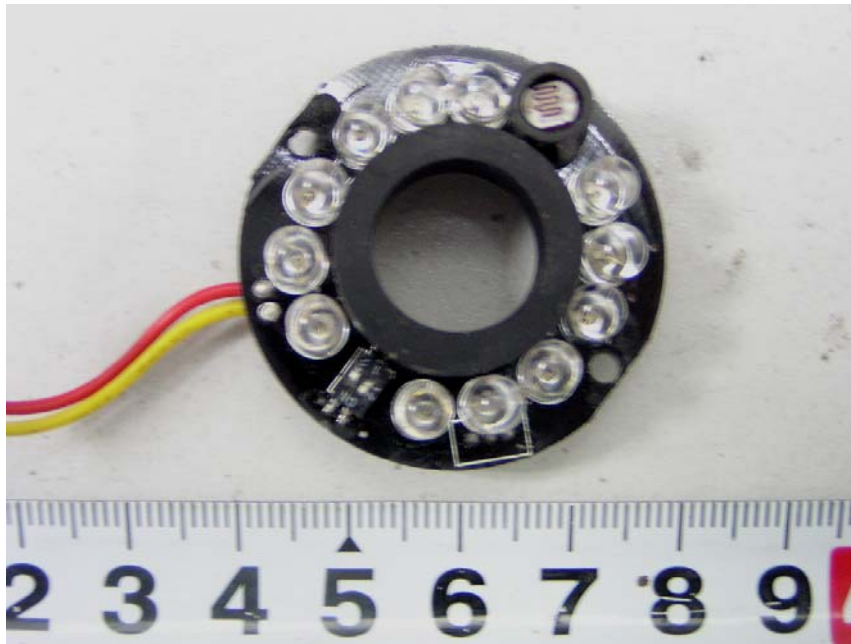


**EUT- LED PCB View (1)**

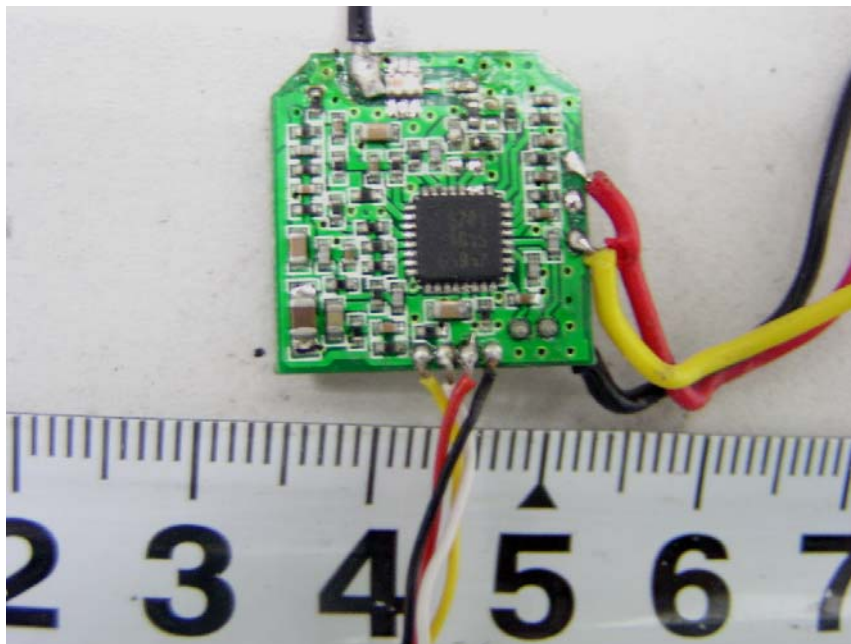




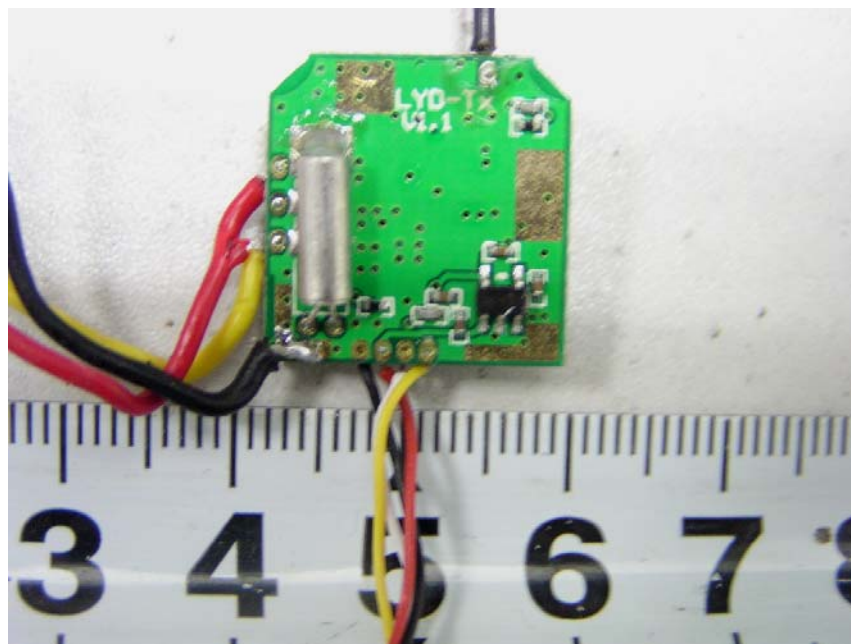
**EUT- LED PCB View (2)**



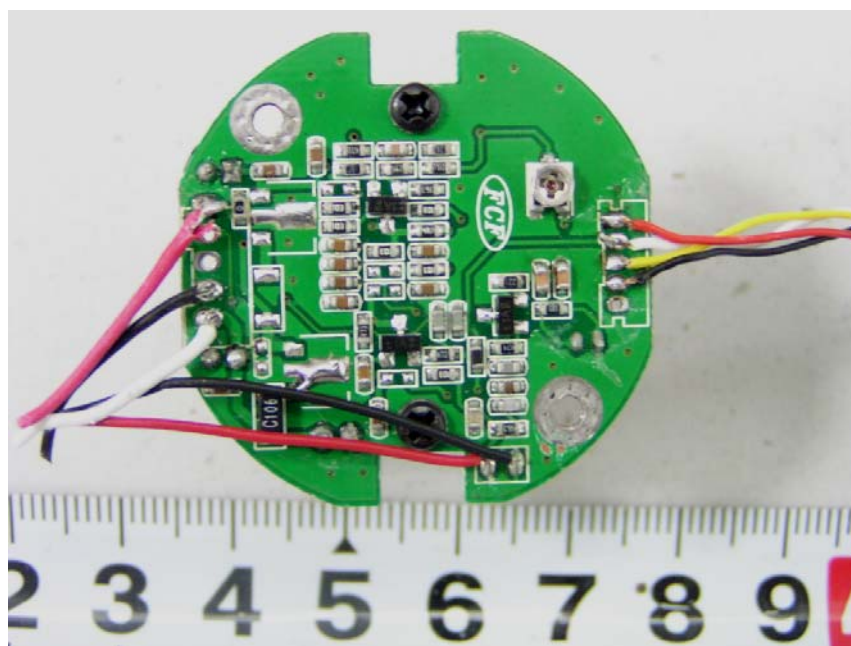
**EUT- TX PCB View (1)**



**EUT- TX PCB View (2)**



**EUT- Camera PCB View (1)**



**EUT- Camera PCB View (2)**

