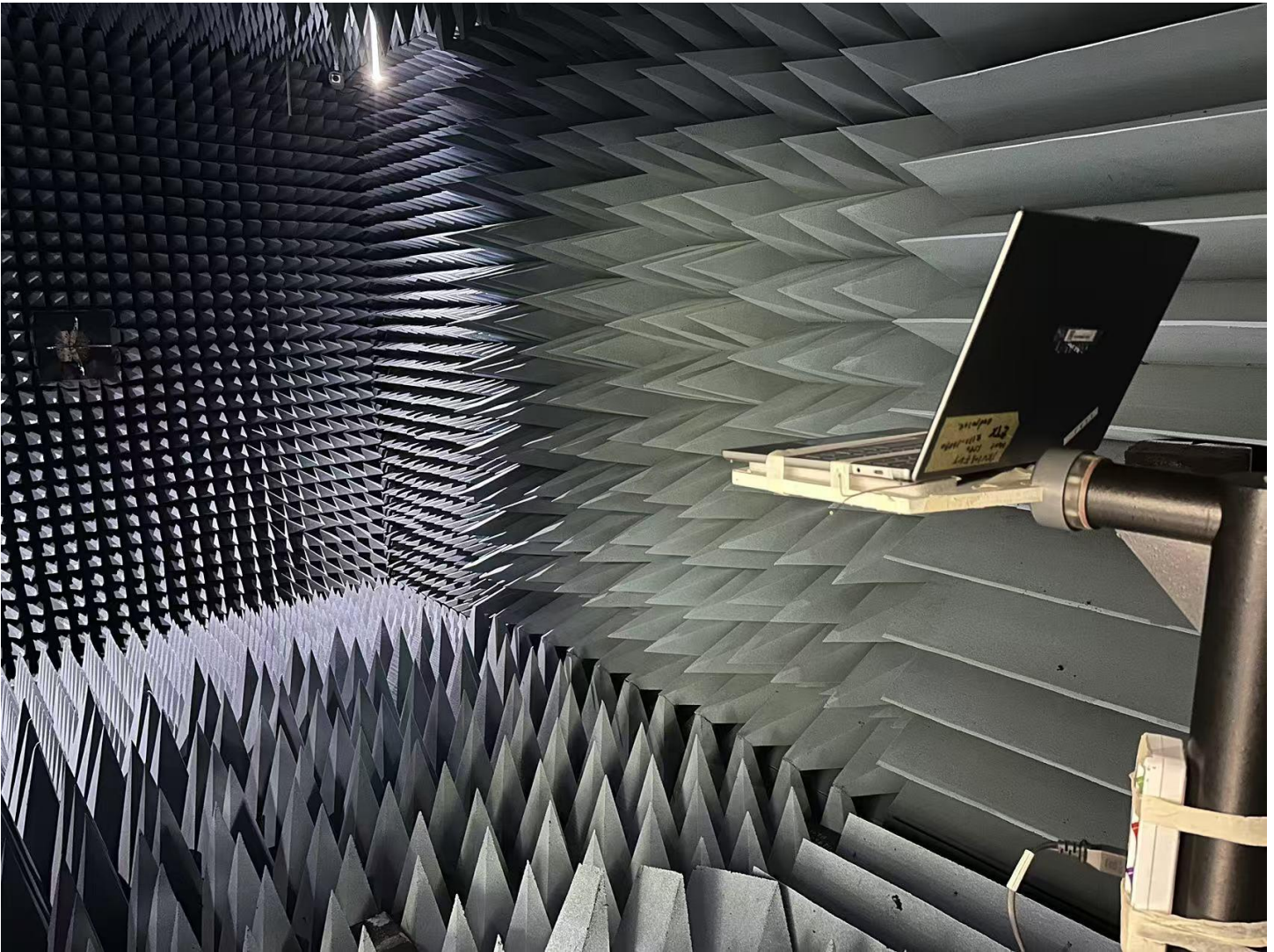


# Annex A. Photographs

---

## A.1 Setup Photo

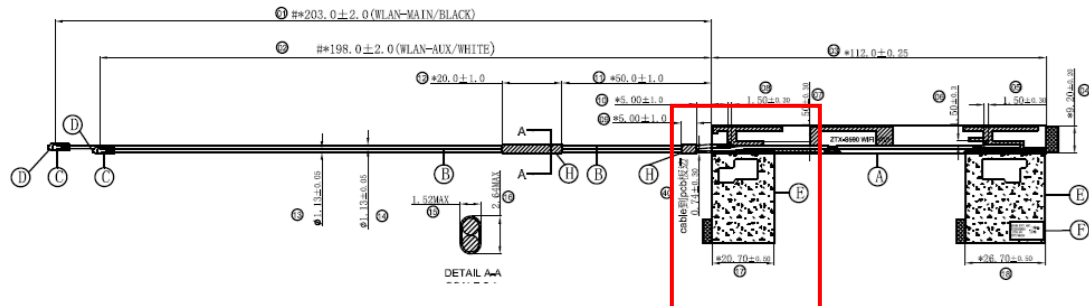
<insert test diagram here for test site utilized>



## A.2 Test sample

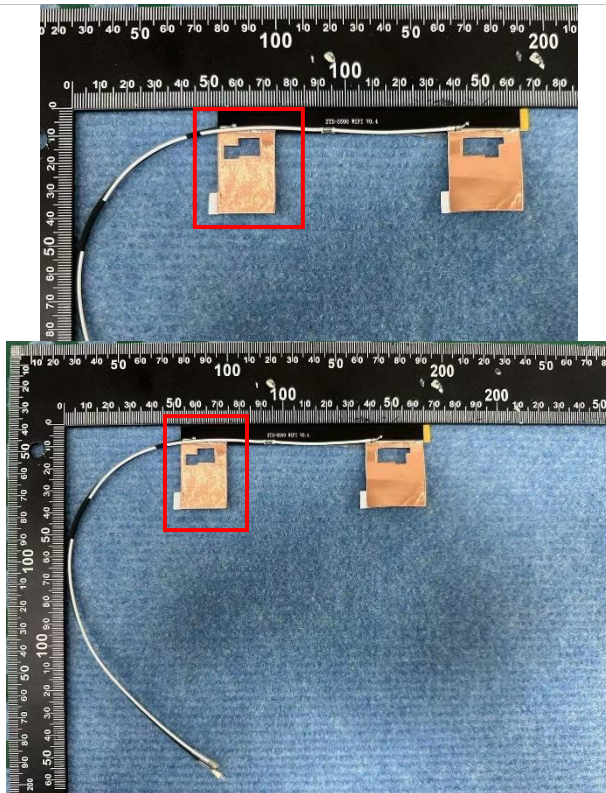
### Main Antenna

#### Antenna Drawing

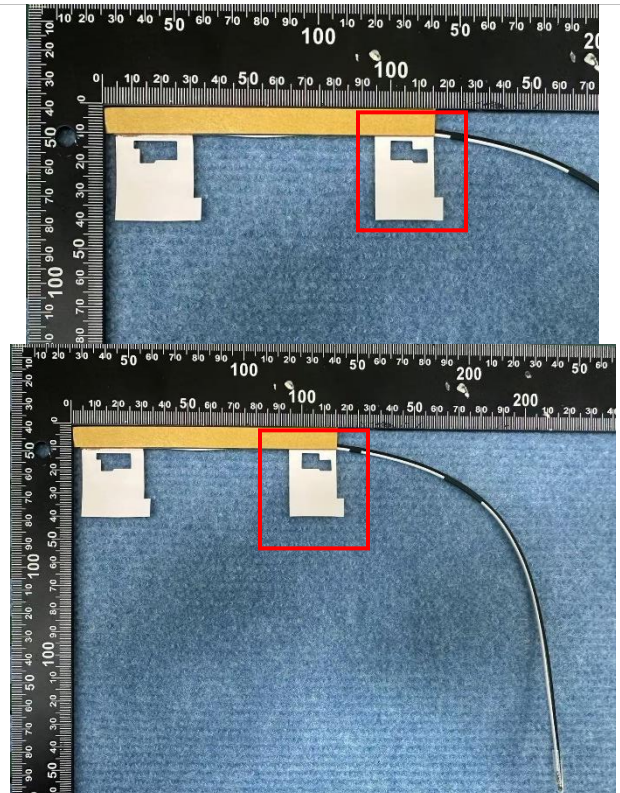


#### Antenna Photo

##### Front



##### Back

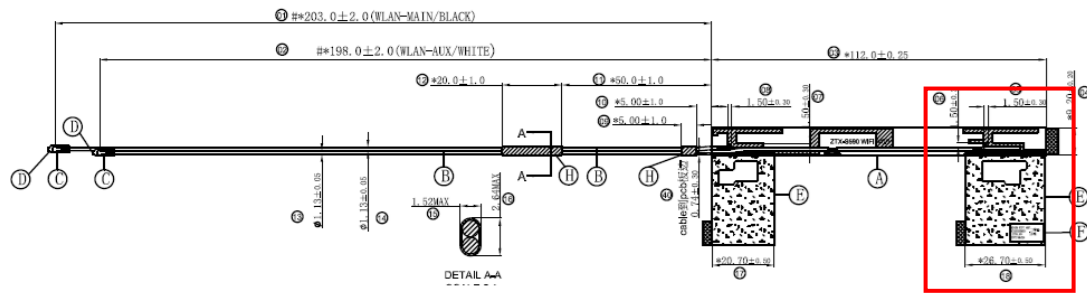


Note: antenna photo should include L type ruler



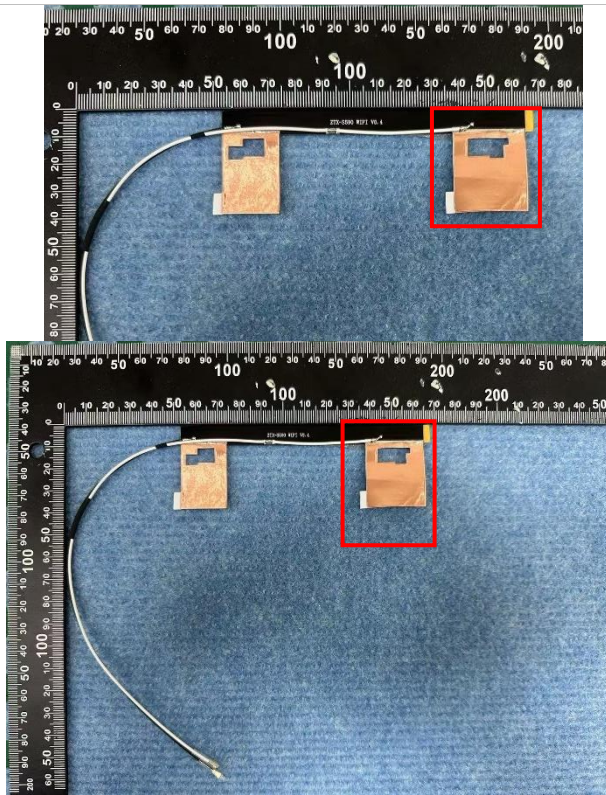
## Aux Antenna

### Antenna Drawing

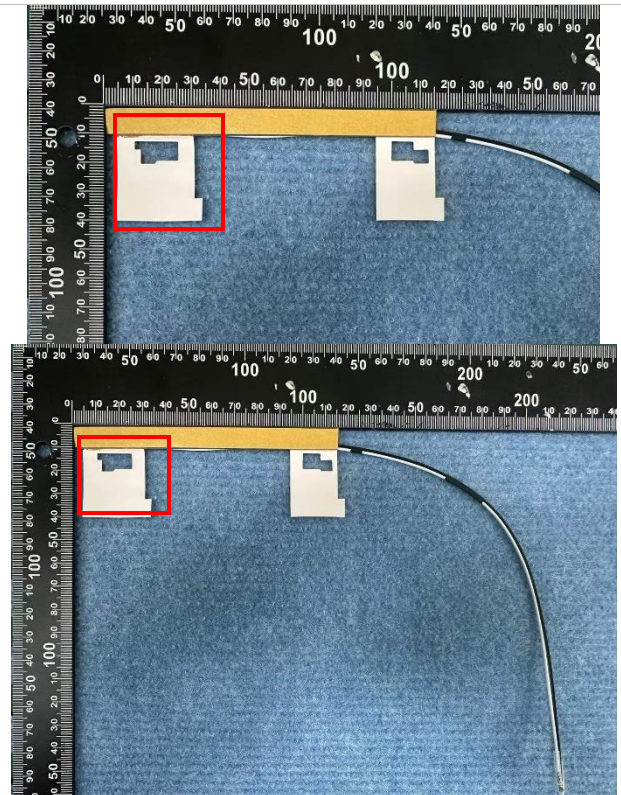


### Antenna Photo

#### Front



#### Back



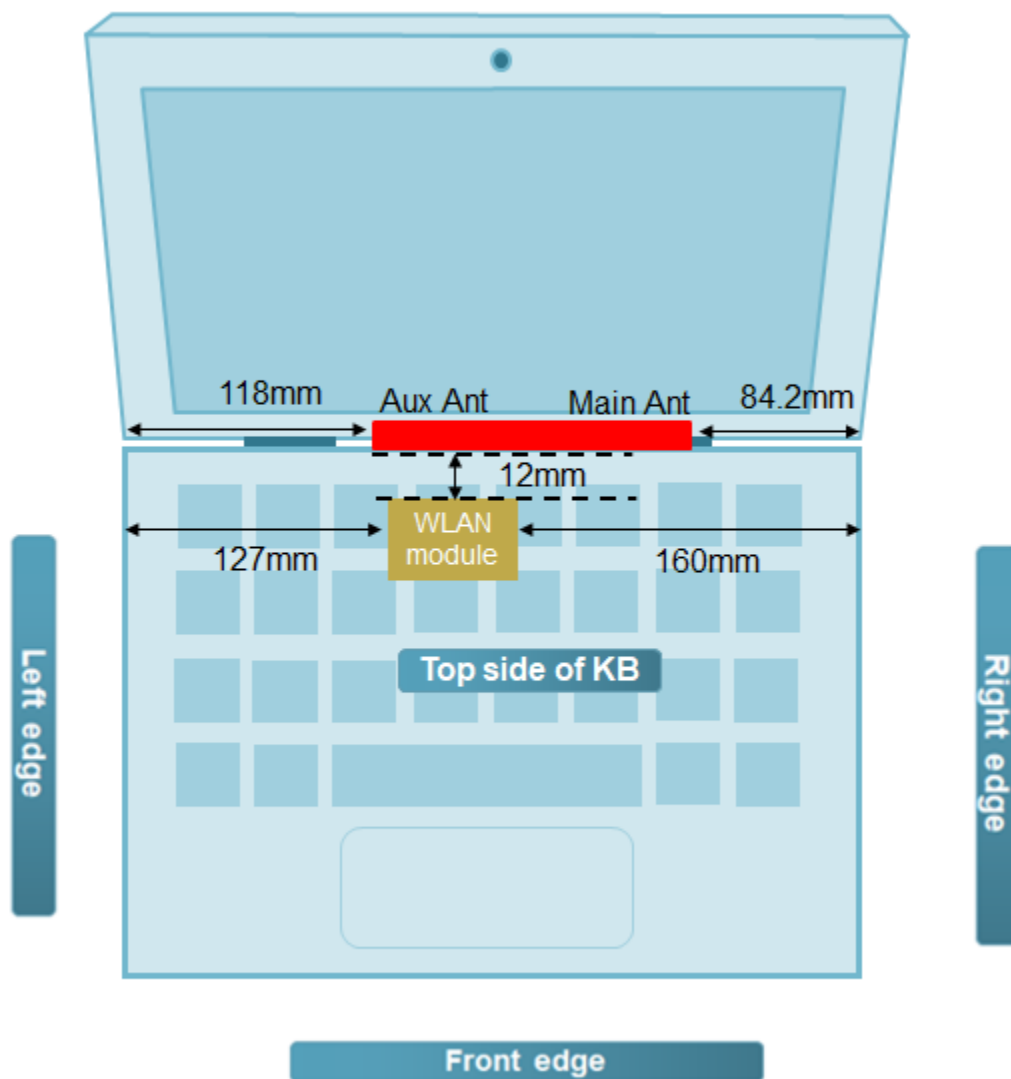
**Note: antenna photo should include L type ruler**

# Annex B. Antenna Location

## B.1 Antenna Host Platform Location Information

Include a dimensioned photo(s) or dimensioned drawing(s) of Main and Aux antenna placements (measurements are not required for receive-only antenna).

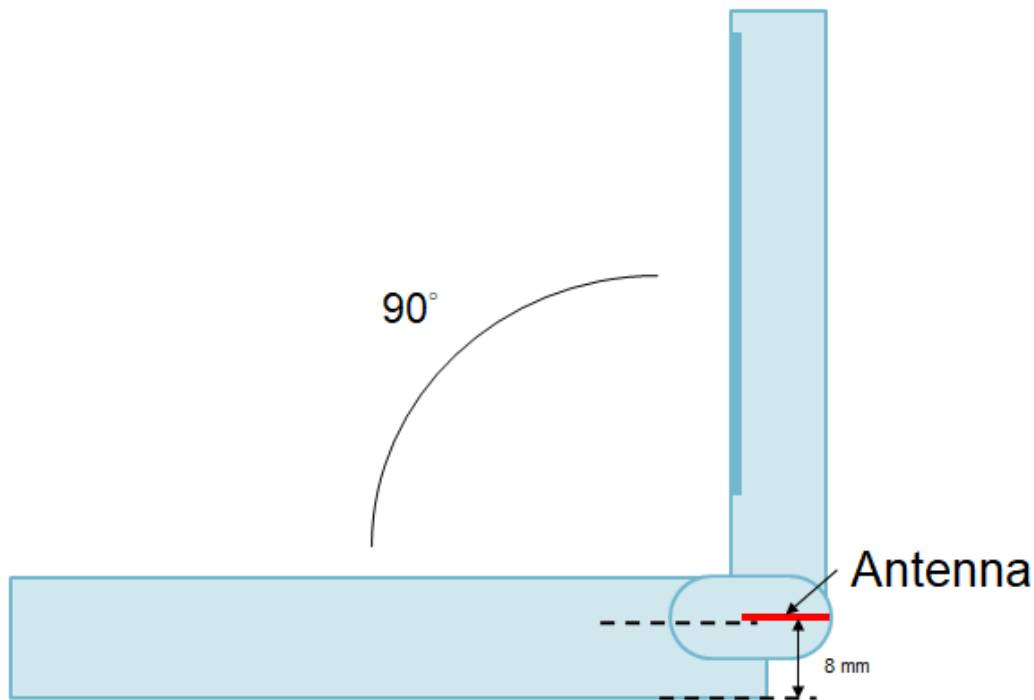
Any antenna that transmits must show dimensions to bottom of laptop. Provide a description of the materials that are used for supporting or surrounding transmit antennas; for example, non-conductive plastics vs. conductive coated plastic or metallic materials.



## B.2 Antenna dimensional information for SAR evaluation

Include a dimensioned photo(s) or dimensioned drawing(s) showing the distance (mm) between the transmit antennas and the user. For notebook/laptop hosts show lapheld position (example below). For tablet hosts show all orientations including lapheld, primary & secondary portrait, primary & secondary landscape positions. Include a description of any proximity sensors or power throttling implementations that limit or exclude use of any host orientation.

### NB Mode - WLAN portion



Measuring Surface	Antenna	Separation Distance(antenna-to- Surface)(mm)	1g SAR
Bottom Side	Main	8 mm	FCC/ISED
	Aux	8 mm	FCC/ISED