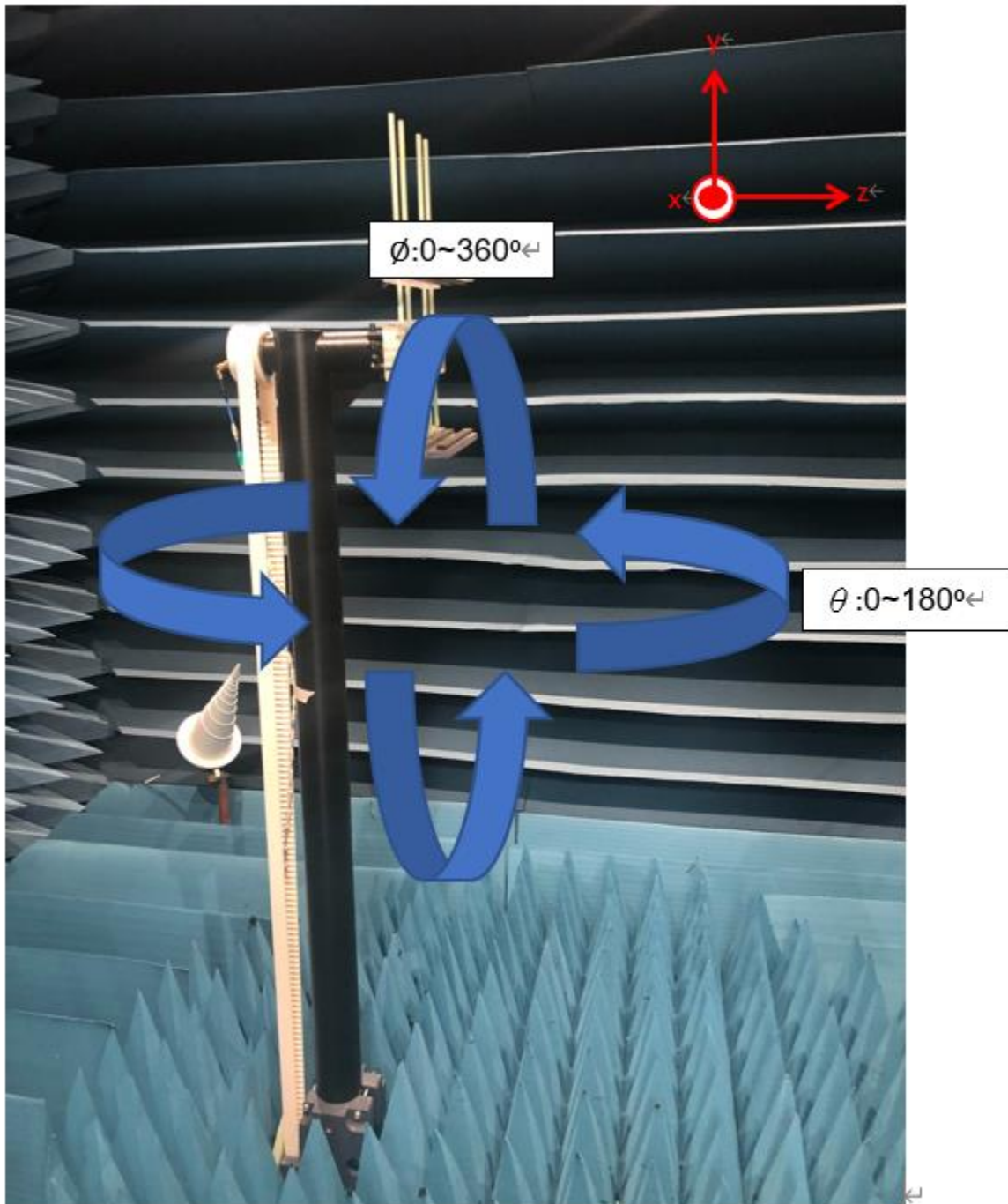


Annex A. Photographs

A.1 Setup Photo

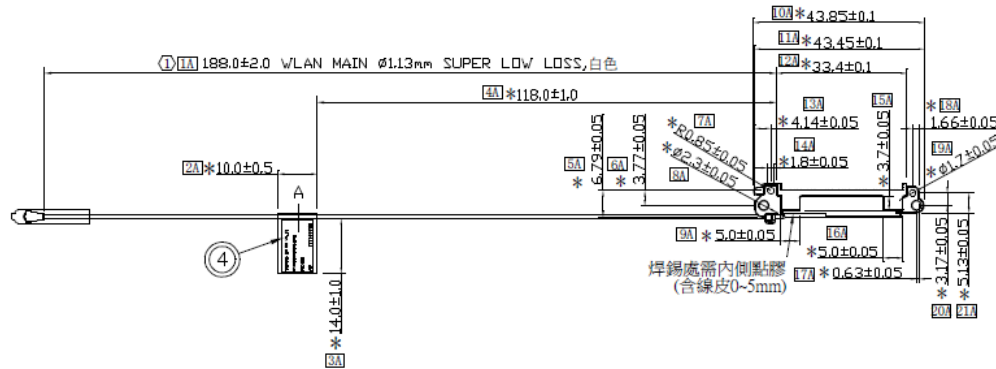
<insert test diagram here for test site utilized>



A.2 Test sample

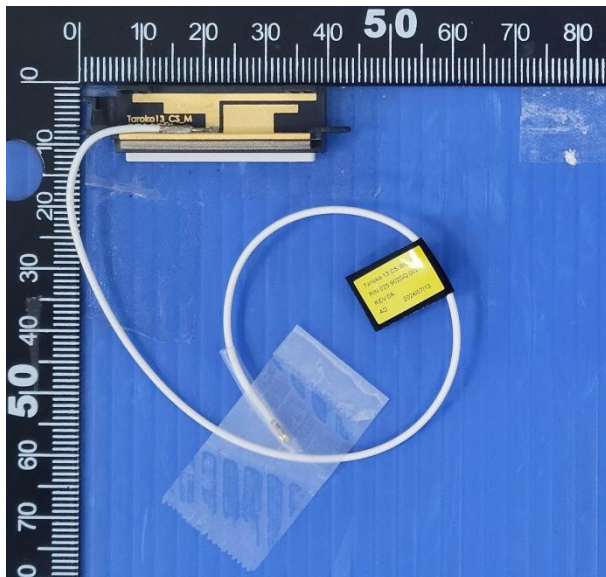
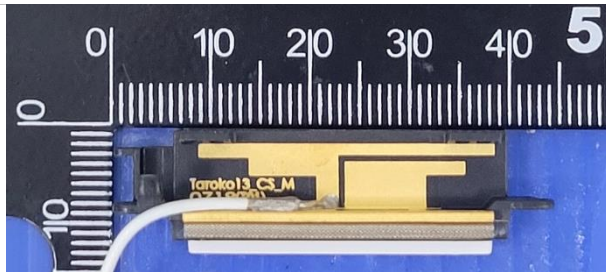
Main Antenna

Antenna Drawing

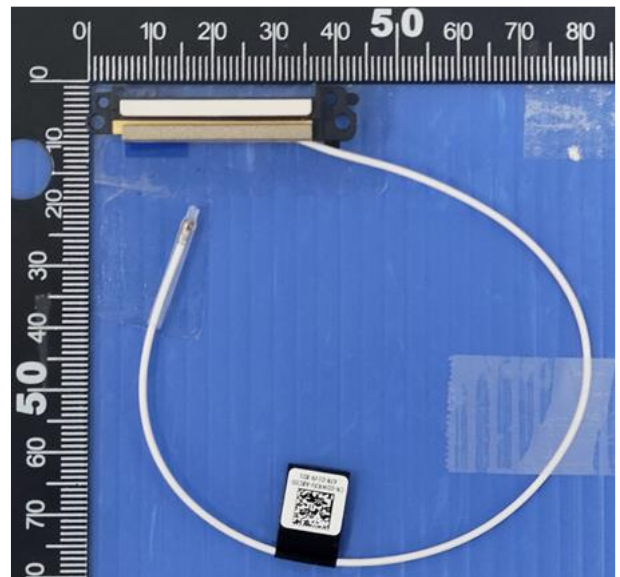
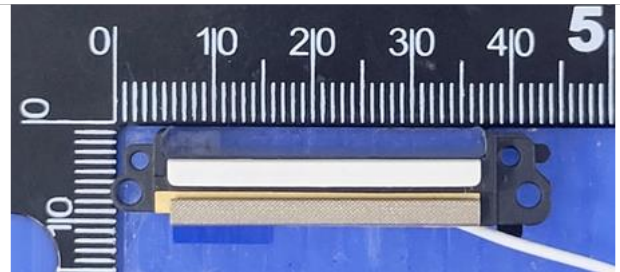


Antenna Photo

Front



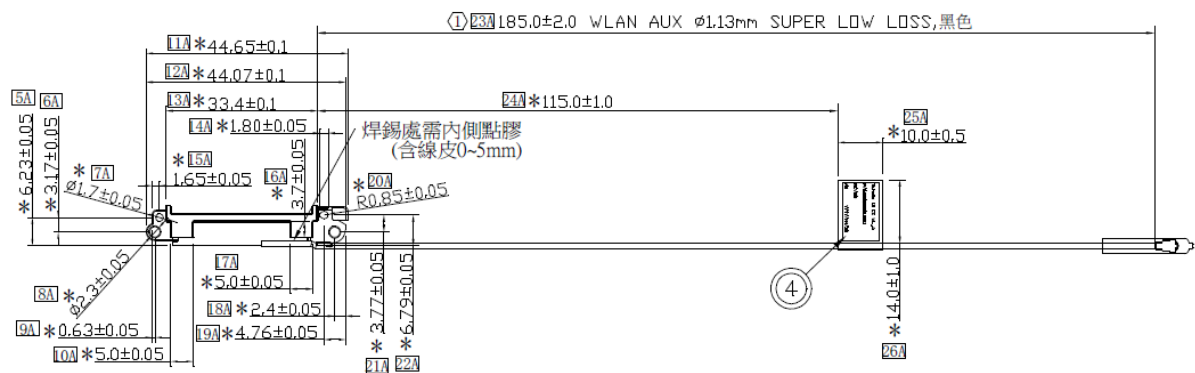
Back



Note: antenna photo should include L type ruler

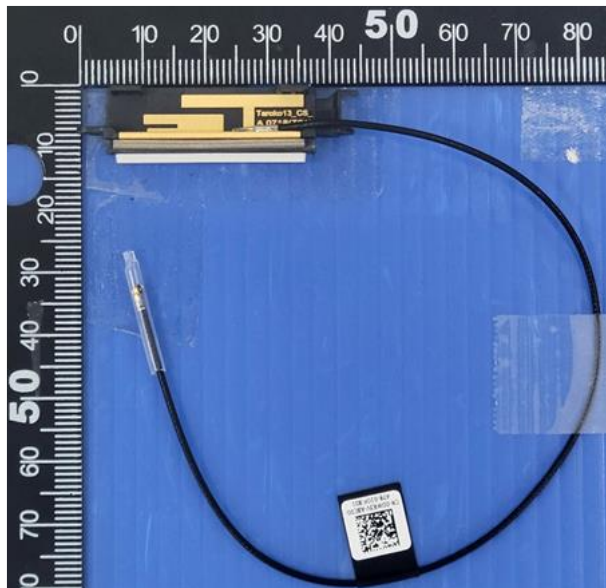
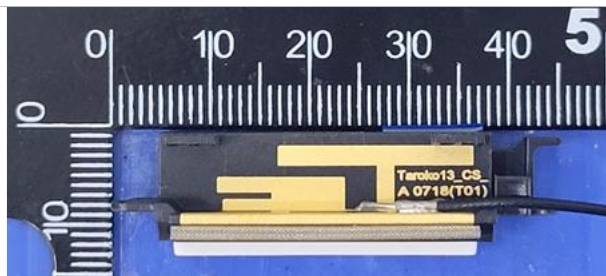
Aux Antenna

Antenna Drawing

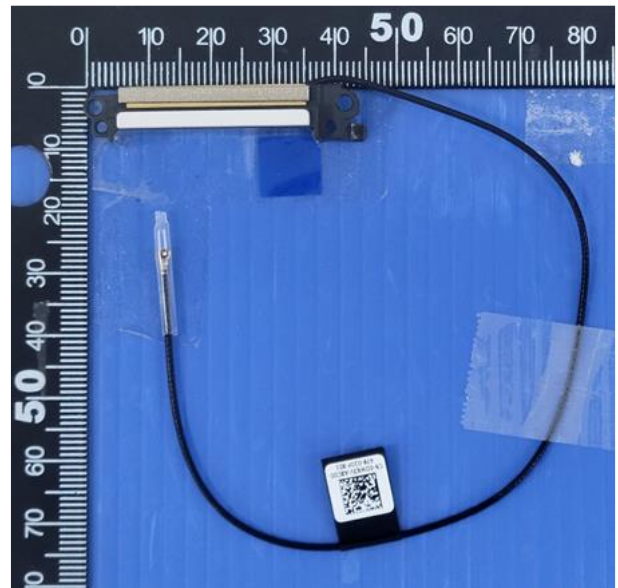


Antenna Photo

Front



Back



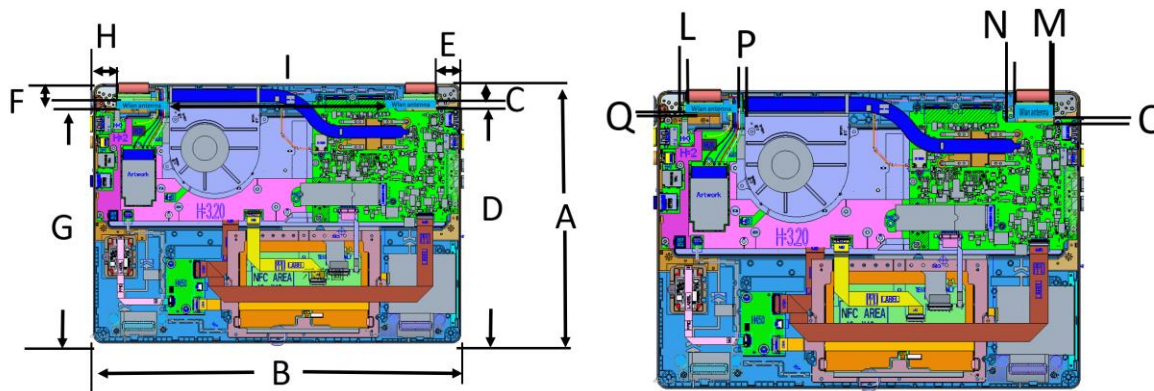
Note: antenna photo should include L type ruler

Annex B. Antenna Location

B.1 Antenna Host Platform Location Information

Include a dimensioned photo(s) or dimensioned drawing(s) of Main and Aux antenna placements (measurements are not required for receive-only antenna).

Any antenna that transmits must show dimensions to bottom of laptop. Provide a description of the materials that are used for supporting or surrounding transmit antennas; for example, non-conductive plastics vs. conductive coated plastic or metallic materials.



Item	Location	distance
A	SYSTEM Y	215
B	SYSTEM X	300
C	WLAN-Main to edge	10.3
D	WLAN-Main to edge	197.98
E	WLAN-Main to edge	23.6
F	WLAN-Aux to edge	10.3
G	WLAN-Aux to edge	197.98
H	WLAN-Aux to edge	23.6
I	WLAN-Aux to WLAN-Main	188
J	WLAN to table	4.42
K	WLAN to C cover	1.6
L	WLAN to metal	1.7
M	WLAN to metal	1.7
N	WLAN to metal (eDP cable)	5
O	WLAN to metal (Antenna Wall)	0.55
P	WLAN to metal (ANT cable)	5
Q	WLAN to metal (Antenna Wall)	0.55
R	WLAN to metal (Hinge)	2.5

B.2 Antenna dimensional information for SAR evaluation

Include a dimensioned photo(s) or dimensioned drawing(s) showing the distance (mm) between the transmit antennas and the user. For notebook/laptop hosts show lapheld position (example below). For tablet hosts show all orientations including lapheld, primary & secondary portrait, primary & secondary landscape positions. Include a description of any proximity sensors or power throttling implementations that limit or exclude use of any host orientation.

Antennas on the panel section

