

System Check_Head_2450MHz

DUT: D2450V2-929

Communication System: CW; Frequency: 2450 MHz; Duty Cycle: 1:1

Medium: HSL_2450_220116 Medium parameters used : $f = 2450$ MHz; $\sigma = 1.801$ S/m; $\epsilon_r = 39.239$; $\rho = 1000$ kg/m³

Ambient Temperature : 23.6 °C ; Liquid Temperature : 22.6 °C

DASY5 Configuration:

- Probe: EX3DV4 - SN3578; ConvF(7.34, 7.34, 7.34) @ 2450 MHz; Calibrated: 2021/6/23
- Sensor-Surface: 1.4mm (Mechanical Surface Detection)
- Electronics: DAE3 Sn528; Calibrated: 2021/7/26
- Phantom: ELI v5.0_Left; Type: QDOVA002AA; Serial: TP:1191
- Measurement SW: DASY52, Version 52.10 (4); SEMCAD X Version 14.6.14 (7483)

Pin=50mW/Area Scan (71x71x1): Interpolated grid: dx=1.200 mm, dy=1.200 mm

Maximum value of SAR (interpolated) = 4.34 W/kg

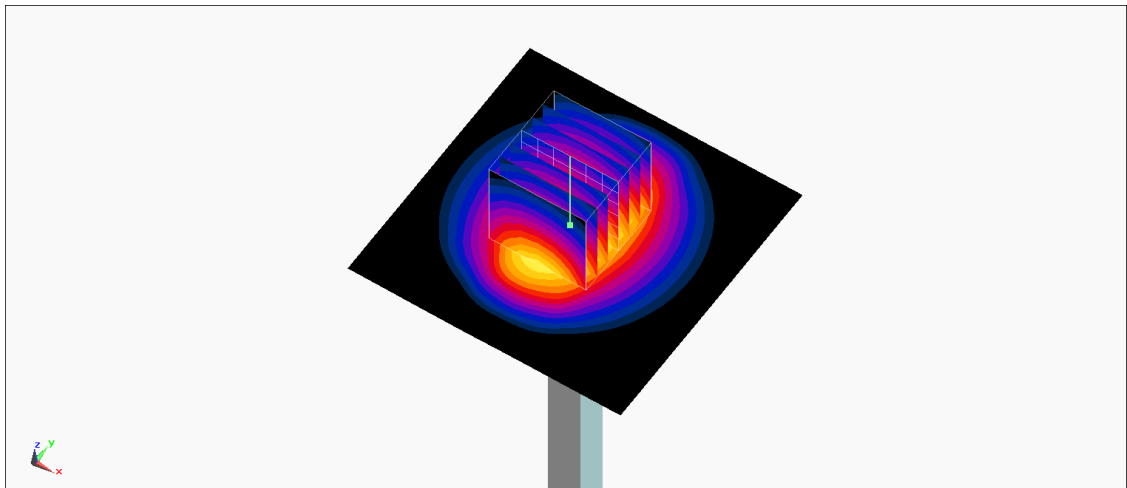
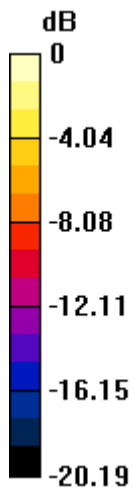
Pin=50mW/Zoom Scan (7x7x7)/Cube 0: Measurement grid: dx=5mm, dy=5mm, dz=5mm

Reference Value = 50.08 V/m; Power Drift = 0.02 dB

Peak SAR (extrapolated) = 5.34 W/kg

SAR(1 g) = 2.69 W/kg; SAR(10 g) = 1.3 W/kg

Maximum value of SAR (measured) = 4.35 W/kg



0 dB = 4.35 W/kg = 6.38 dBW/kg

System Check_Head_5250MHz

DUT: D5GHzV2-1128

Communication System: CW; Frequency: 5250 MHz; Duty Cycle: 1:1

Medium: HSL_5G_220116 Medium parameters used: $f = 5250$ MHz; $\sigma = 4.557$ S/m; $\epsilon_r = 36.502$; $\rho = 1000$ kg/m³

Ambient Temperature : 23.4 °C ; Liquid Temperature : 22.4 °C

DASY5 Configuration:

- Probe: EX3DV4 - SN7306; ConvF(5.33, 5.33, 5.33) @ 5250 MHz; Calibrated: 2021/7/26
- Sensor-Surface: 1.4mm (Mechanical Surface Detection)
- Electronics: DAE4 Sn376; Calibrated: 2021/11/22
- Phantom: ELI v4.0_Left; Type: QDOVA001BB; Serial: TP:1164
- Measurement SW: DASY52, Version 52.10 (4); SEMCAD X Version 14.6.14 (7501)

Pin=100mW/Area Scan (71x71x1): Interpolated grid: dx=1.000 mm, dy=1.000 mm

Maximum value of SAR (interpolated) = 23.9 W/kg

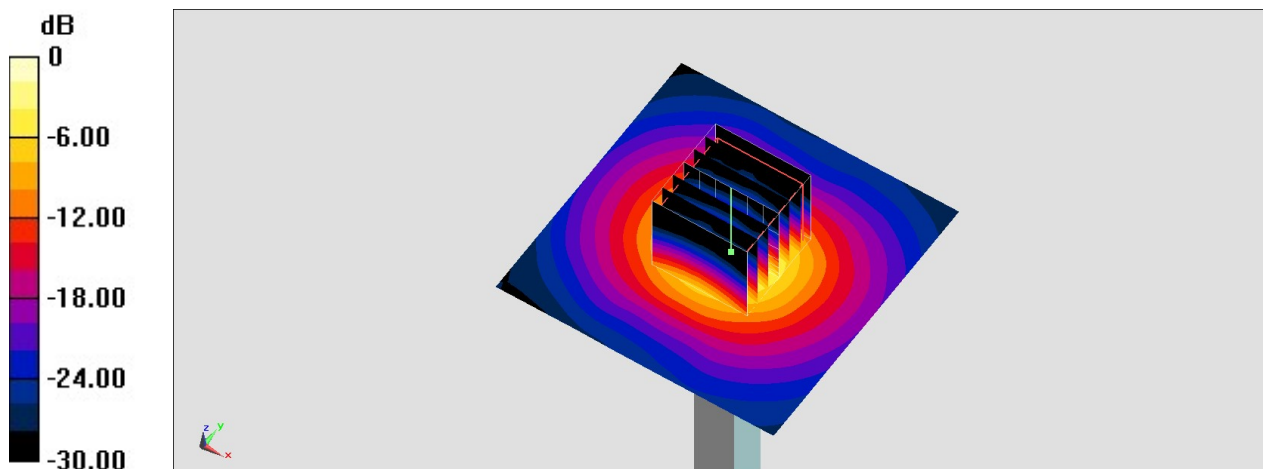
Pin=100mW/Zoom Scan (7x7x7)/Cube 0: Measurement grid: dx=4mm, dy=4mm, dz=1.4mm

Reference Value = 78.80 V/m; Power Drift = -0.15 dB

Peak SAR (extrapolated) = 33.3 W/kg

SAR(1 g) = 8.33 W/kg; SAR(10 g) = 2.42 W/kg

Maximum value of SAR (measured) = 21.1 W/kg



0 dB = 21.1 W/kg = 13.24 dBW/kg

System Check_Head_5600MHz

DUT: D5GHzV2-1128

Communication System: CW; Frequency: 5600 MHz; Duty Cycle: 1:1

Medium: HSL_5G_220116 Medium parameters used: $f = 5600$ MHz; $\sigma = 4.899$ S/m; $\epsilon_r = 36.029$; $\rho = 1000$ kg/m³

Ambient Temperature : 23.4 °C ; Liquid Temperature : 22.4 °C

DASY5 Configuration:

- Probe: EX3DV4 - SN7306; ConvF(4.66, 4.66, 4.66) @ 5600 MHz; Calibrated: 2021/7/26
- Sensor-Surface: 1.4mm (Mechanical Surface Detection)
- Electronics: DAE4 Sn376; Calibrated: 2021/11/22
- Phantom: ELI v4.0_Left; Type: QDOVA001BB; Serial: TP:1164
- Measurement SW: DASY52, Version 52.10 (4); SEMCAD X Version 14.6.14 (7501)

Pin=100mW/Area Scan (71x71x1): Interpolated grid: dx=1.000 mm, dy=1.000 mm

Maximum value of SAR (interpolated) = 24.4 W/kg

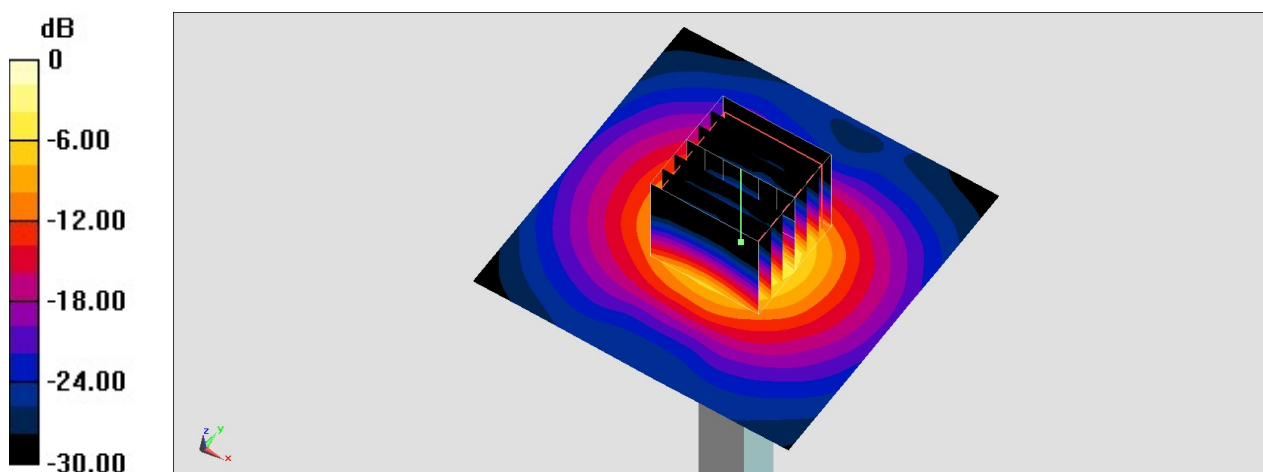
Pin=100mW/Zoom Scan (7x7x7)/Cube 0: Measurement grid: dx=4mm, dy=4mm, dz=1.4mm

Reference Value = 74.34 V/m; Power Drift = -0.01 dB

Peak SAR (extrapolated) = 37.7 W/kg

SAR(1 g) = 8.78 W/kg; SAR(10 g) = 2.51 W/kg

Maximum value of SAR (measured) = 22.9 W/kg



0 dB = 22.9 W/kg = 13.60 dBW/kg

System Check_Head_5750MHz

DUT: D5GHzV2-1128

Communication System: CW; Frequency: 5750 MHz; Duty Cycle: 1:1

Medium: HSL_5G_220116 Medium parameters used: $f = 5750$ MHz; $\sigma = 5.058$ S/m; $\epsilon_r = 35.825$; $\rho = 1000$ kg/m³

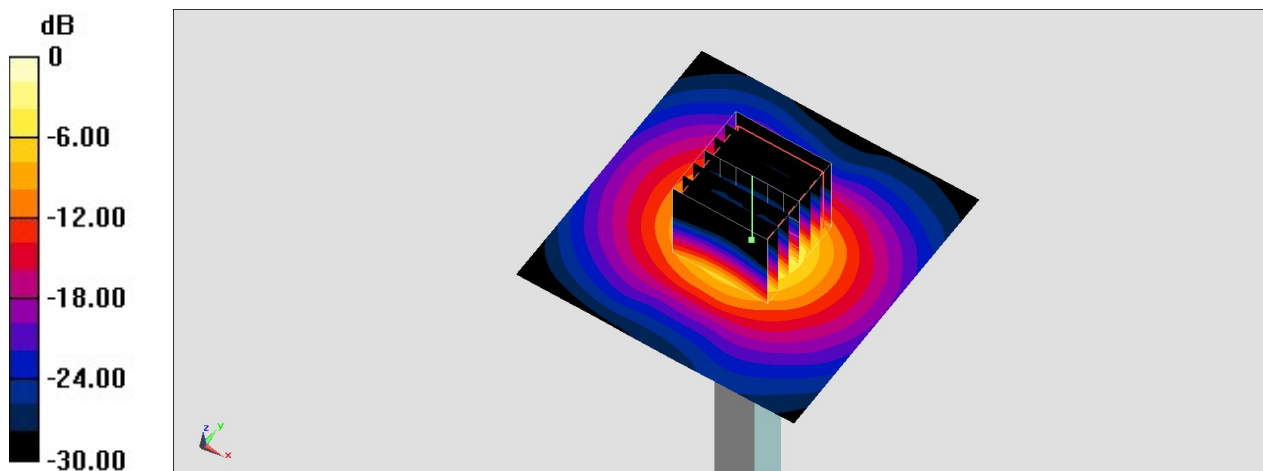
Ambient Temperature : 23.4 °C ; Liquid Temperature : 22.4 °C

DASY5 Configuration:

- Probe: EX3DV4 - SN7306; ConvF(4.95, 4.95, 4.95) @ 5750 MHz; Calibrated: 2021/7/26
- Sensor-Surface: 1.4mm (Mechanical Surface Detection)
- Electronics: DAE4 Sn376; Calibrated: 2021/11/22
- Phantom: ELI v4.0_Left; Type: QDOVA001BB; Serial: TP:1164
- Measurement SW: DASY52, Version 52.10 (4); SEMCAD X Version 14.6.14 (7501)

Pin=100mW/Area Scan (71x71x1): Interpolated grid: dx=1.000 mm, dy=1.000 mm
Maximum value of SAR (interpolated) = 21.4 W/kg

Pin=100mW/Zoom Scan (7x7x7)/Cube 0: Measurement grid: dx=4mm, dy=4mm, dz=1.4mm
Reference Value = 69.30 V/m; Power Drift = -0.07 dB
Peak SAR (extrapolated) = 34.4 W/kg
SAR(1 g) = 7.82 W/kg; SAR(10 g) = 2.26 W/kg
Maximum value of SAR (measured) = 20.4 W/kg



0 dB = 20.4 W/kg = 13.10 dBW/kg

System Check_Head_6500MHz

Communication System: ; Frequency: 6500.0

Medium: HSL_6G_220117. Medium parameters used: $f= 6500.0$ MHz; $\sigma= 6.01$ S/m; $\epsilon_r = 34.29$

Ambient Temperature: 23.5°C; Liquid Temperature: 22.5°C

DASY6 Configuration:

- Probe: EX3DV4 - SN3728; ConvF(4.95, 4.95, 4.95); Calibrated: 2021-02-23
- Sensor-Surface: 1.4 mm
- Electronics: DAE3 Sn577; Calibrated: 2021-09-15
- Phantom: ELI V5.0 (20deg probe tilt); Serial: 1227; Section: Flat
- Measurement Software: cDASY6 V6.6.0.13926
- UID: CW
- MAIA: Area Scan: N/A; Zoom Scan: N/A

Area Scan (51.0 mm x 85.0 mm): Measurement Grid: 8.5 mm x 8.5 mm

SAR (1g) = 21.9 W/kg; SAR (10g) = 4.76 W/kg;

Zoom Scan (23.8 mm x 23.8 mm x 22.0 mm): Measurement Grid: 3.4 mm x 3.4 mm x 1.4 mm

Power Drift = 0.00 dB

SAR (1g) = 28.1 W/kg; SAR (10g) = 5.27 W/kg;

