

Meas.1 Body&Limbs Plane with Right Edge 0mm on 78 Channel in Bluetooth mode with Auxiliary-Without Handle

Exposure Conditions

Phantom Section, TSL	Position, Test Distance [mm]	Band	Group, UID	Frequency [MHz], Channel Number	Conversion Factor	TSL Conductivity [S/m]	TSL Permittivity	Ambient Temperature [°C]	Liquid Temperature [°C]
Flat, HSL	EDGE RIGHT, 0.00	ISM 2.4 GHz Band	Bluetooth, 10032-CAA	2480.0, 78	6.98	1.88	38.2	22.5	21.2

Hardware Setup

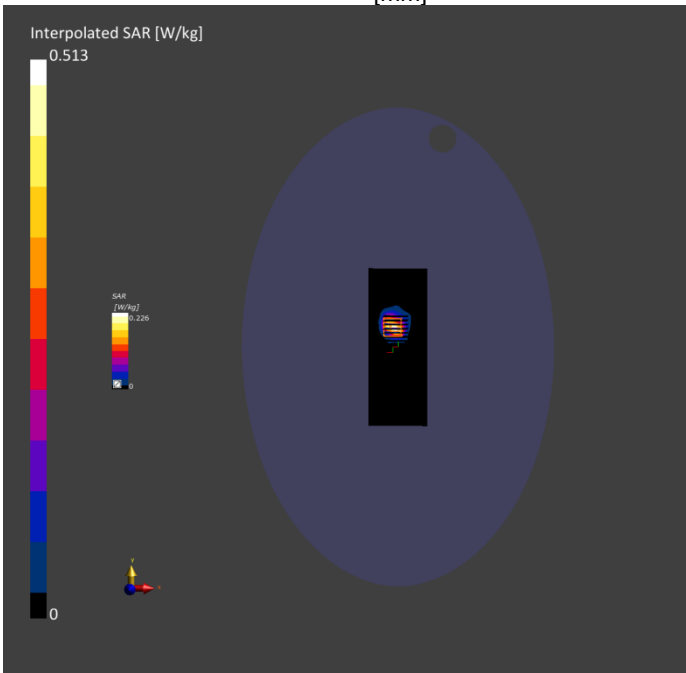
Phantom	TSL, Measured Date	Probe, Calibration Date	DAE, Calibration Date
ELI V8.0 (20deg probe tilt) - 2159	HBBL-600-10000 2025-06-04	EX3DV4 - SN7893, 2024-09-05	DAE4 Sn878, 2025-03-05

Scan Setup

	Area Scan	Zoom Scan
Grid Extents [mm]	72.0 x 192.0	30.0 x 30.0 x 30.0
Grid Steps [mm]	12.0 x 12.0	5.0 x 5.0 x 5.0
Sensor Surface [mm]	3.0	1.4
Graded Grid	Yes	Yes
Grading Ratio	1.5	1.5
MAIA	N/A	N/A
Surface	VMS + 6p	VMS + 6p
Detection		
Scan Method	Measured	Measured

Measurement Results

	Area Scan	Zoom Scan
Date	2025-06-04	2025-06-04
psSAR1g [W/kg]	0.399	0.402
psSAR10g [W/kg]	0.158	0.161
Power Drift [dB]	0.03	0.02
Power Scaling	Disabled	Disabled
Scaling Factor [dB]		
TSL Correction	No correction	No correction
M2/M1 [%]		52.2
Dist 3dB Peak [mm]		6.0



Meas.2 Body&Limbs Plane with Right Edge 0mm on 1 Channel in IEEE802.11b mode with Auxiliary-Without Handle

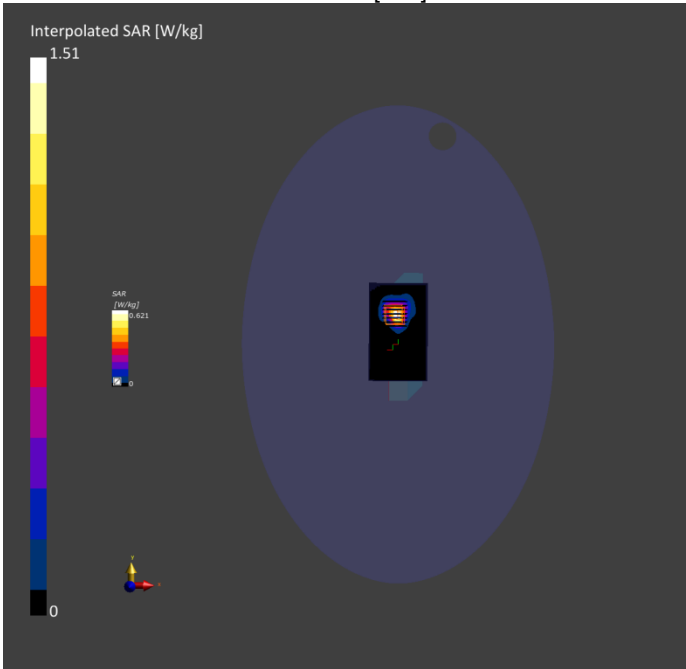
Exposure Conditions

Phantom Section, TSL	Position, Test Distance [mm]	Band	Group, UID	Frequency [MHz], Channel Number	Conversion Factor	TSL Conductivity [S/m]	TSL Permittivity	Ambient Temperature [°C]	Liquid Temperature [°C]
Flat, HSL	EDGE RIGHT, 0.00	WLAN 2.4GHz	WLAN, 10415-AAA	2412.0, 1	6.98	1.77	40.3	22.4	21.3

Hardware Setup

Phantom	TSL, Measured Date	Probe, Calibration Date	DAE, Calibration Date
ELI V8.0 (20deg probe tilt) - 2159	HBBL-600-10000 2025-06-05	EX3DV4 - SN7893, 2024-09-05	DAE4 Sn878, 2025-03-05

Scan Setup			Measurement Results		
	Area Scan	Zoom Scan		Area Scan	Zoom Scan
Grid Extents [mm]	72.0 x 120.0	30.0 x 30.0 x 30.0	Date	2025-06-05	2025-06-05
Grid Steps [mm]	12.0 x 12.0	5.0 x 5.0 x 5.0	psSAR1g [W/kg]	0.616	0.775
Sensor Surface [mm]	3.0	1.4	psSAR10g [W/kg]	0.271	0.314
Graded Grid	Yes	Yes	Power Drift [dB]	-0.02	-0.14
Grading Ratio	1.5	1.5	Power Scaling	Disabled	Disabled
MAIA	N/A	N/A	Scaling Factor [dB]		
Surface Detection	All points	All points	TSL Correction	No correction	No correction
Scan Method	Measured	Measured	M2/M1 [%]		54.3
			Dist 3dB Peak [mm]		7.6



Meas.3 Body&Limbs Plane with Left Edge 0mm on 11 Channel in IEEE802.11b mode with Main-Without Handle

Exposure Conditions

Phantom Section, TSL	Position, Test Distance [mm]	Band	Group, UID	Frequenc y [MHz], Channel Number	Conversio n Factor	TSL Conductiv ity [S/m]	TSL Permittivi ty	Ambient Temperatu re [°C]	Liquid Temperatu re [°C]
Flat, HSL	EDGE LEFT, 0.00	WLAN 2.4GH z	WLAN, 10415-AAA	2462.0, 11	6.98	1.85	38.9	22.4	21.3

Hardware Setup

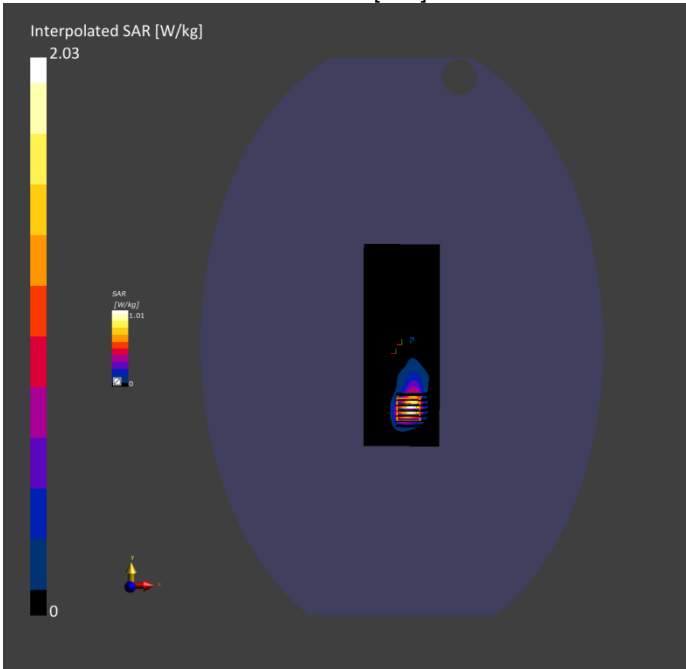
Phantom	TSL, Measured Date	Probe, Calibration Date	DAE, Calibration Date
ELI V8.0 (20deg probe tilt) - 2159	HBBL-600-10000 2025-06-05	EX3DV4 - SN7893, 2024-09-05	DAE4 Sn878, 2025-03-05

Scan Setup

	Area Scan	Zoom Scan
Grid Extents [mm]	72.0 x 192.0	30.0 x 30.0 x 30.0
Grid Steps [mm]	12.0 x 12.0	5.0 x 5.0 x 5.0
Sensor Surface [mm]	3.0	1.4
Graded Grid	Yes	Yes
Grading Ratio	1.5	1.5
MAIA	N/A	N/A
Surface	VMS + 6p	VMS + 6p
Detection		
Scan Method	Measured	Measured

Measurement Results

	Area Scan	Zoom Scan
Date	2025-06-05	2025-06-05
psSAR1g [W/kg]	0.880	1.06
psSAR10g [W/kg]	0.366	0.440
Power Drift [dB]	-0.01	-0.01
Power Scaling	Disabled	Disabled
Scaling Factor [dB]		
TSL Correction	No correction	No correction
M2/M1 [%]		56.6
Dist 3dB Peak [mm]		7.6



Meas.4 Body&Limbs Plane with Right Edge 0mm on 58 Channel in IEEE802.11ac80 mode with Auxiliary-Without Handle

Exposure Conditions

Phantom Section, TSL	Position, Test Distance [mm]	Band	Group, UID	Frequency [MHz], Channel Number	Conversion Factor	TSL Conductivity [S/m]	TSL Permittivity	Ambient Temperature [°C]	Liquid Temperature [°C]
Flat, HSL	EDGE RIGHT, 0.00	WLAN 5GHz	WLAN, 10544-AAD	5290.0, 58	5.5	4.91	36.2	22.6	21.5

Hardware Setup

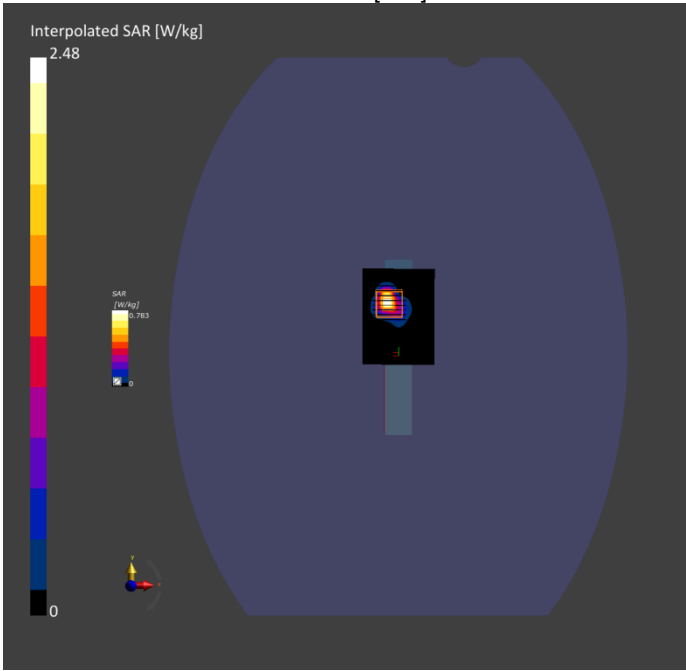
Phantom	TSL, Measured Date	Probe, Calibration Date	DAE, Calibration Date
ELI V8.0 (20deg probe tilt) - 2159	HBBL-600-10000 2025-06-06	EX3DV4 - SN7893, 2024-09-05	DAE4 Sn878, 2025-03-05

Scan Setup

	Area Scan	Zoom Scan
Grid Extents [mm]	60.0 x 80.0	24.0 x 24.0 x 22.0
Grid Steps [mm]	10.0 x 10.0	4.0 x 4.0 x 2.0
Sensor Surface [mm]	3.0	1.4
Graded Grid	Yes	Yes
Grading Ratio	1.5	1.4
MAIA	Y	N/A
Surface	VMS + 6p	VMS + 6p
Detection		
Scan Method	Measured	Measured

Measurement Results

	Area Scan	Zoom Scan
Date	2025-06-06	2025-06-06
psSAR1g [W/kg]	0.788	0.815
psSAR10g [W/kg]	0.288	0.258
Power Drift [dB]	0.10	0.12
Power Scaling	Disabled	Disabled
Scaling Factor [dB]		
TSL Correction	No correction	No correction
M2/M1 [%]		61.9
Dist 3dB Peak [mm]		6.2



Meas.5 Body&Limbs Plane with Left Edge 0mm on 58 Channel in IEEE802.11ac80 mode with Main-Without Handle

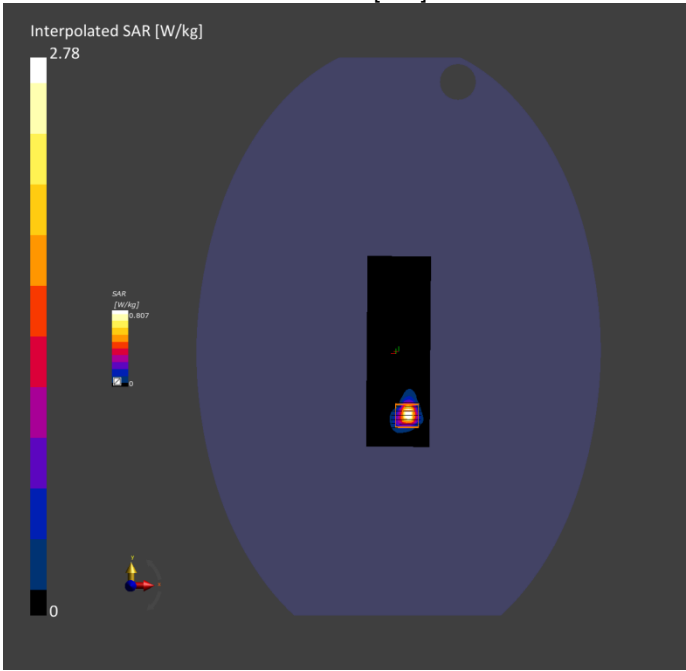
Exposure Conditions

Phantom Section, TSL	Position, Test Distance [mm]	Band	Group, UID	Frequenc y [MHz], Channel Number	Conversio n Factor	TSL Conductiv ity [S/m]	TSL Permittivi ty	Ambient Temperatu re [°C]	Liquid Temperatu re [°C]
Flat, HSL	EDGE LEFT, 0.00	WLAN 5GHz	WLAN, 10544-AAD	5290.0, 58	5.44	4.91	36.2	22.6	21.5

Hardware Setup

Phantom	TSL, Measured Date	Probe, Calibration Date	DAE, Calibration Date
ELI V8.0 (20deg probe tilt) - 2159	HBBL-600-10000 2025-06-06	EX3DV4 - SN7893, 2024-09-05	DAE4 Sn878, 2025-03-05

Scan Setup			Measurement Results		
	Area Scan	Zoom Scan		Area Scan	Zoom Scan
Grid Extents [mm]	60.0 x 180.0	24.0 x 24.0 x 22.0	Date	2025-06-06	2025-06-06
Grid Steps [mm]	10.0 x 10.0	4.0 x 4.0 x 2.0	psSAR1g [W/kg]	0.729	0.795
Sensor Surface [mm]	3.0	1.4	psSAR10g [W/kg]	0.186	0.212
Graded Grid	Yes	Yes	Power Drift [dB]	0.09	0.16
Grading Ratio	1.5	1.4	Power Scaling	Disabled	Disabled
MAIA	N/A	N/A	Scaling Factor [dB]		
Surface	VMS + 6p	VMS + 6p	TSL Correction	No correction	No correction
Detection			M2/M1 [%]		58.8
Scan Method	Measured	Measured	Dist 3dB Peak [mm]		6.6



Meas.6 Body&Limbs Plane with Right Edge 0mm on 114 Channel in IEEE802.11ac160 mode with Auxiliary-Without Handle

Exposure Conditions

Phantom Section, TSL	Position, Test Distance [mm]	Band	Group, UID	Frequenc y [MHz], Channel Number	Conversio n Factor	TSL Conductiv ity [S/m]	TSL Permittivi ty	Ambient Temperatu re [°C]	Liquid Temperatu re [°C]
Flat, HSL	EDGE RIGHT, 0.00	WLAN 5GHz	WLAN, 10554-AAE	5570.0, 114	4.91	5.11	36.4	22.3	21.4

Hardware Setup

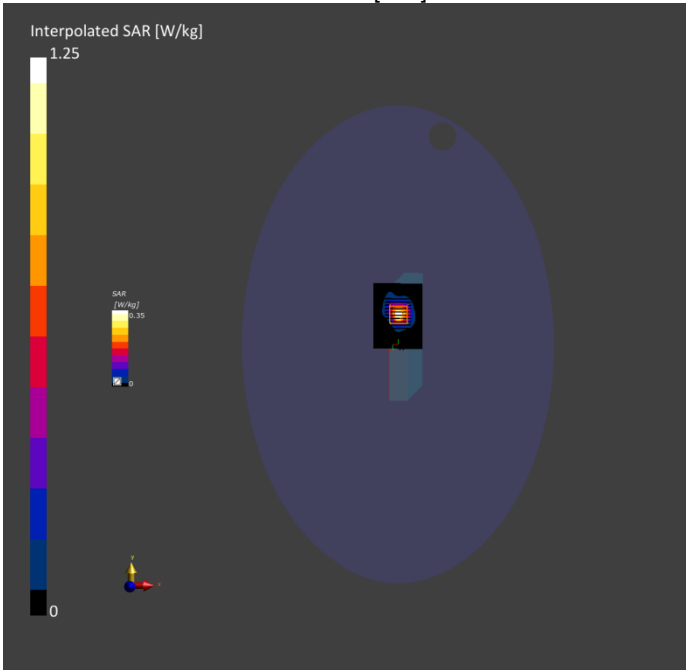
Phantom	TSL, Measured Date	Probe, Calibration Date	DAE, Calibration Date
ELI V8.0 (20deg probe tilt) - 2159	HBBL-600-10000 2025-06-07	EX3DV4 - SN7893, 2024-09-05	DAE4 Sn878, 2025-03-05

Scan Setup

	Area Scan	Zoom Scan
Grid Extents [mm]	60.0 x 80.0	24.0 x 24.0 x 22.0
Grid Steps [mm]	10.0 x 10.0	4.0 x 4.0 x 2.0
Sensor Surface [mm]	3.0	1.4
Graded Grid	Yes	Yes
Grading Ratio	1.5	1.4
MAIA	Y	Y
Surface	VMS + 6p	VMS + 6p
Detection		
Scan Method	Measured	Measured

Measurement Results

	Area Scan	Zoom Scan
Date	2025-06-07	2025-06-07
psSAR1g [W/kg]	0.395	0.458
psSAR10g [W/kg]	0.111	0.106
Power Drift [dB]	-0.04	-0.02
Power Scaling	Disabled	Disabled
Scaling Factor [dB]		
TSL Correction	No correction	No correction
M2/M1 [%]		55.6
Dist 3dB Peak [mm]		7.2



Meas.7 Body&Limbs Plane with Left Edge 0mm on 114 Channel in IEEE802.11ac160 mode with Main-Without Handle

Exposure Conditions

Phantom Section, TSL	Position, Test Distance [mm]	Band	Group, UID	Frequenc y [MHz], Channel Number	Conversio n Factor	TSL Conductiv ity [S/m]	TSL Permittivi ty	Ambient Temperatu re [°C]	Liquid Temperatu re [°C]
Flat, HSL	EDGE LEFT, 0.00	WLAN 5GHz	WLAN, 10554-AAE	5570.0, 114	4.91	5.11	36.4	22.3	21.4

Hardware Setup

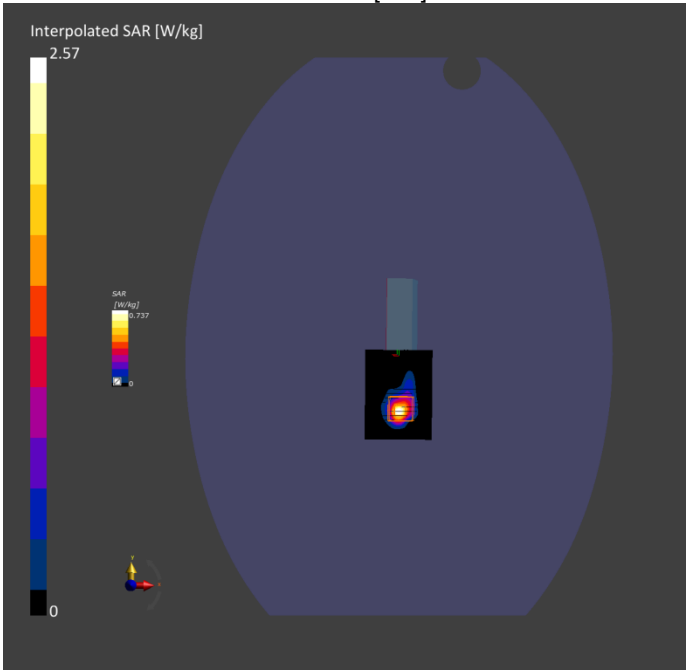
Phantom	TSL, Measured Date	Probe, Calibration Date	DAE, Calibration Date
ELI V8.0 (20deg probe tilt) - 2159	HBBL-600-10000 2025-06-07	EX3DV4 - SN7893, 2024-09-05	DAE4 Sn878, 2025-03-05

Scan Setup

	Area Scan	Zoom Scan
Grid Extents [mm]	60.0 x 80.0	24.0 x 24.0 x 22.0
Grid Steps [mm]	10.0 x 10.0	4.0 x 4.0 x 2.0
Sensor Surface [mm]	3.0	1.4
Graded Grid	Yes	Yes
Grading Ratio	1.5	1.4
MAIA	Y	Y
Surface	VMS + 6p	VMS + 6p
Detection		
Scan Method	Measured	Measured

Measurement Results

	Area Scan	Zoom Scan
Date	2025-06-07	2025-06-07
psSAR1g [W/kg]	0.655	0.680
psSAR10g [W/kg]	0.184	0.191
Power Drift [dB]	-0.06	-0.01
Power Scaling	Disabled	Disabled
Scaling Factor [dB]		
TSL Correction	No correction	No correction
M2/M1 [%]		53.8
Dist 3dB Peak [mm]		6.4



Meas.8 Body&Limbs Plane with Right Edge 0mm on 155 Channel in IEEE802.11ac80 mode with Auxiliary-Without Handle

Exposure Conditions

Phantom Section, TSL	Position, Test Distance [mm]	Band	Group, UID	Frequenc y [MHz], Channel Number	Conversio n Factor	TSL Conductiv ity [S/m]	TSL Permittivi ty	Ambient Temperatu re [°C]	Liquid Temperatu re [°C]
Flat, HSL	EDGE RIGHT, 0.00	WLAN 5GHz	WLAN, 10544-AAD	5775.0, 155	4.98	5.23	34.7	22.2	21.2

Hardware Setup

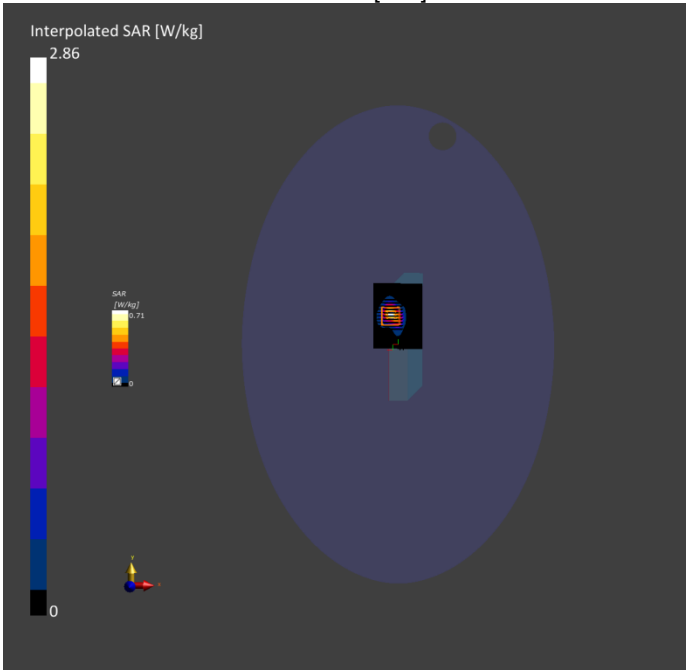
Phantom	TSL, Measured Date	Probe, Calibration Date	DAE, Calibration Date
ELI V8.0 (20deg probe tilt) - 2159	HBBL-600-10000 2025-06-09	EX3DV4 - SN7893, 2024-09-05	DAE4 Sn878, 2025-03-05

Scan Setup

	Area Scan	Zoom Scan
Grid Extents [mm]	60.0 x 80.0	24.0 x 24.0 x 22.0
Grid Steps [mm]	10.0 x 10.0	4.0 x 4.0 x 2.0
Sensor Surface [mm]	3.0	1.4
Graded Grid	Yes	Yes
Grading Ratio	1.5	1.4
MAIA	Y	N/A
Surface	VMS + 6p	VMS + 6p
Detection		
Scan Method	Measured	Measured

Measurement Results

	Area Scan	Zoom Scan
Date	2025-06-09	2025-06-09
psSAR1g [W/kg]	0.671	0.743
psSAR10g [W/kg]	0.203	0.216
Power Drift [dB]	-0.00	0.02
Power Scaling	Disabled	Disabled
Scaling Factor [dB]		
TSL Correction	No correction	No correction
M2/M1 [%]		53.5
Dist 3dB Peak [mm]		6.4



Meas.9 Body&Limbs Plane with Left Edge 0mm on 155 Channel in IEEE802.11ac80 mode with Main-Without Handle

Exposure Conditions

Phantom Section, TSL	Position, Test Distance [mm]	Band	Group, UID	Frequency [MHz], Channel Number	Conversion Factor	TSL Conductivity [S/m]	TSL Permittivity	Ambient Temperature [°C]	Liquid Temperature [°C]
Flat, HSL	EDGE LEFT, 0.00	WLAN 5GHz	WLAN, 10544-AAD	5775.0, 155	5.04	5.23	34.7	22.2	21.2

Hardware Setup

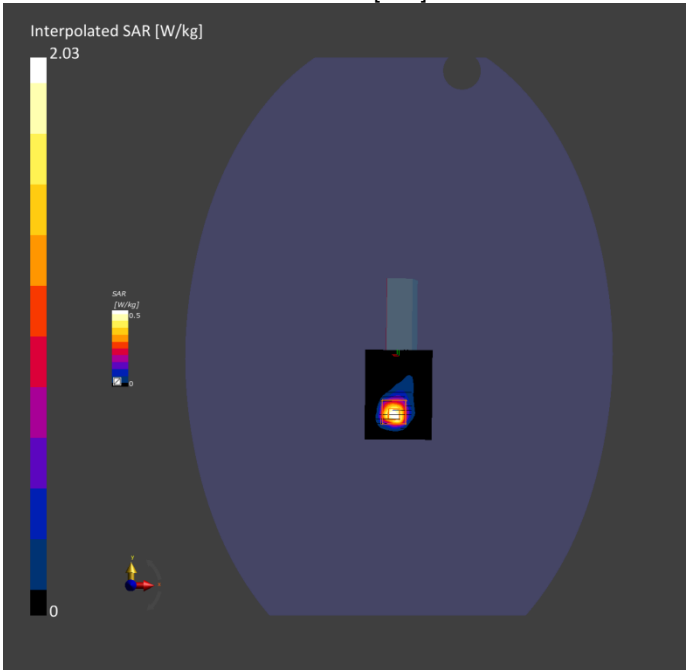
Phantom	TSL, Measured Date	Probe, Calibration Date	DAE, Calibration Date
ELI V8.0 (20deg probe tilt) - 2159	HBBL-600-10000 2025-06-09	EX3DV4 - SN7893, 2024-09-05	DAE4 Sn878, 2025-03-05

Scan Setup

	Area Scan	Zoom Scan
Grid Extents [mm]	60.0 x 80.0	24.0 x 24.0 x 22.0
Grid Steps [mm]	10.0 x 10.0	4.0 x 4.0 x 2.0
Sensor Surface [mm]	3.0	1.4
Graded Grid	Yes	Yes
Grading Ratio	1.5	1.4
MAIA	Y	Y
Surface	VMS + 6p	VMS + 6p
Detection		
Scan Method	Measured	Measured

Measurement Results

	Area Scan	Zoom Scan
Date	2025-06-09	2025-06-09
psSAR1g [W/kg]	0.510	0.567
psSAR10g [W/kg]	0.158	0.161
Power Drift [dB]	-0.09	-0.11
Power Scaling	Disabled	Disabled
Scaling Factor [dB]		
TSL Correction	No correction	No correction
M2/M1 [%]		56.7
Dist 3dB Peak [mm]		6.8



Meas.10 Body&Limbs Plane with Right Edge 0mm on 163 Channel in IEEE802.11ac80 mode with Main-Without Handle

Exposure Conditions

Phantom Section, TSL	Position, Test Distance [mm]	Band	Group, UID	Frequency [MHz], Channel Number	Conversion Factor	TSL Conductivity [S/m]	TSL Permittivity	Ambient Temperature [°C]	Liquid Temperature [°C]
Flat, HSL	EDGE RIGHT, 0.00	CUSTOM Band	CW, 10554-AAE	5815.0, 163	4.98	5.36	34.5	22.3	21.3

Hardware Setup

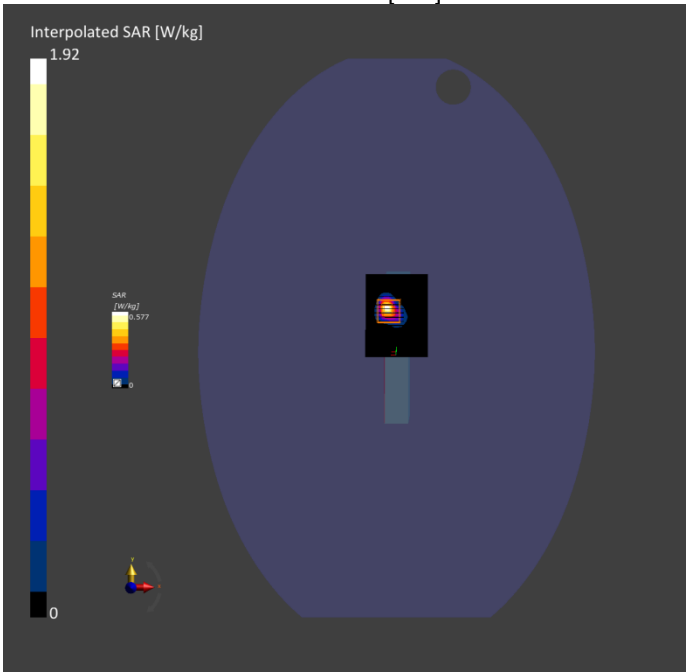
Phantom	TSL, Measured Date	Probe, Calibration Date	DAE, Calibration Date
ELI V8.0 (20deg probe tilt) - 2159	HBBL-600-10000 2025-06-10	EX3DV4 - SN7893, 2024-09-05	DAE4 Sn878, 2025-03-05

Scan Setup

	Area Scan	Zoom Scan
Grid Extents [mm]	60.0 x 80.0	24.0 x 24.0 x 22.0
Grid Steps [mm]	10.0 x 10.0	4.0 x 4.0 x 2.0
Sensor Surface [mm]	3.0	1.4
Graded Grid	Yes	Yes
Grading Ratio	1.5	1.4
MAIA	Y	N/A
Surface Detection	VMS + 6p	VMS + 6p
Scan Method	Measured	Measured

Measurement Results

	Area Scan	Zoom Scan
Date	2025-06-10	2025-06-10
psSAR1g [W/kg]	0.458	0.483
psSAR10g [W/kg]	0.134	0.136
Power Drift [dB]	-0.11	-0.13
Power Scaling	Disabled	Disabled
Scaling Factor [dB]		
TSL Correction	No correction	No correction
M2/M1 [%]		50.5
Dist 3dB Peak [mm]		8.1



Meas.11 Body&Limbs Plane with Left Edge 0mm on 163 Channel in IEEE802.11ac80 mode with Main-Without Handle

Exposure Conditions

Phantom Section, TSL	Position, Test Distance [mm]	Band	Group, UID	Frequency [MHz], Channel Number	Conversion Factor	TSL Conductivity [S/m]	TSL Permittivity	Ambient Temperature [°C]	Liquid Temperature [°C]
Flat, HSL	EDGE LEFT, 0.00	CUSTOM Band	CW, 10554-AAE	5815.0, 163	4.98	5.36	34.5	22.3	21.3

Hardware Setup

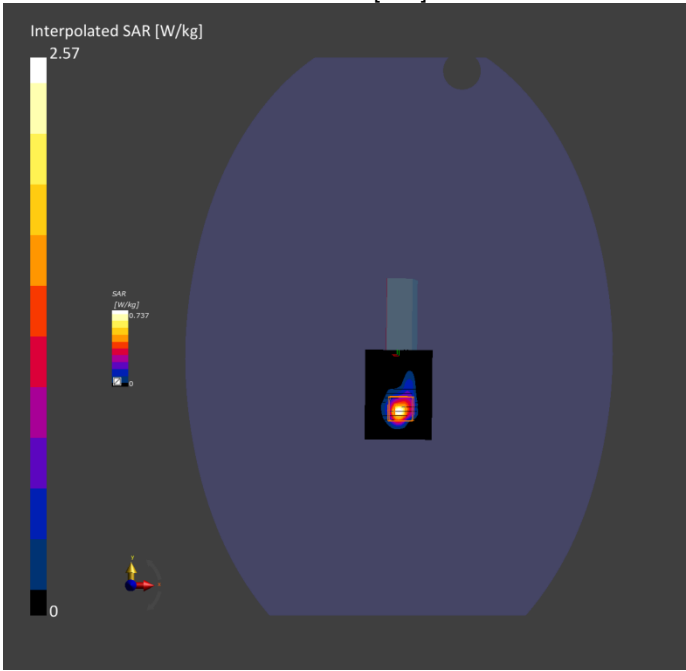
Phantom	TSL, Measured Date	Probe, Calibration Date	DAE, Calibration Date
ELI V8.0 (20deg probe tilt) - 2159	HBBL-600-10000 2025-06-10	EX3DV4 - SN7893, 2024-09-05	DAE4 Sn878, 2025-03-05

Scan Setup

	Area Scan	Zoom Scan
Grid Extents [mm]	60.0 x 80.0	24.0 x 24.0 x 22.0
Grid Steps [mm]	10.0 x 10.0	4.0 x 4.0 x 2.0
Sensor Surface [mm]	3.0	1.4
Graded Grid	Yes	Yes
Grading Ratio	1.5	1.4
MAIA	Y	N/A
Surface	VMS + 6p	VMS + 6p
Detection		
Scan Method	Measured	Measured

Measurement Results

	Area Scan	Zoom Scan
Date	2025-06-10	2025-06-10
psSAR1g [W/kg]	0.628	0.692
psSAR10g [W/kg]	0.194	0.197
Power Drift [dB]	-0.07	-0.11
Power Scaling	Disabled	Disabled
Scaling Factor [dB]		
TSL Correction	No correction	No correction
M2/M1 [%]		56.0
Dist 3dB Peak [mm]		7.2



Meas.12 Body&Limbs Plane with Right Edge 0mm on 111 Channel in IEEE802.11ax160 mode with Auxiliary-Without Handle

Exposure Conditions

Phantom Section, TSL	Position, Test Distance [mm]	Band	Group, UID	Frequency [MHz], Channel Number	Conversion Factor	TSL Conductivity [S/m]	TSL Permittivity	Ambient Temperature [°C]	Liquid Temperature [°C]
Flat, HSL	EDGE RIGHT, 0.00	U-NII-6	WLAN, 10755-AAC	6505.0, 111	5.11	6.03	34.9	22.6	21.4

Hardware Setup

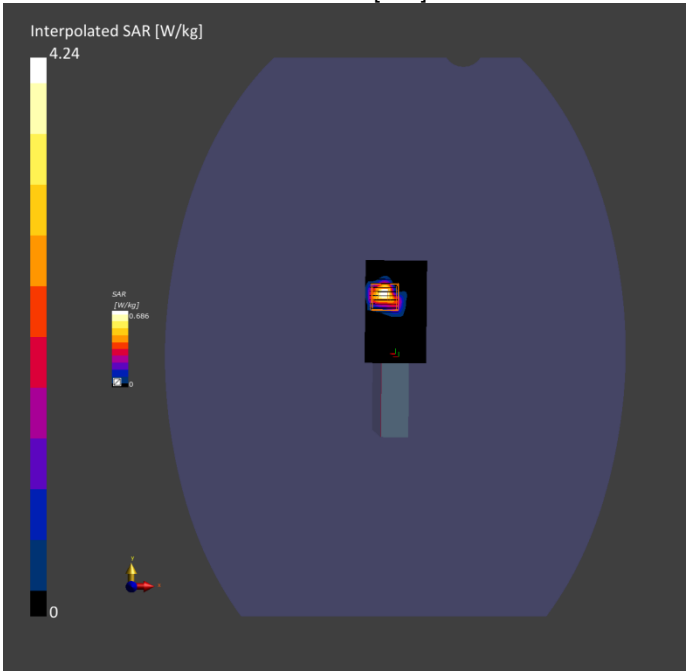
Phantom	TSL, Measured Date	Probe, Calibration Date	DAE, Calibration Date
ELI V8.0 (20deg probe tilt) - 2159	HBBL-600-10000 2025-06-11	EX3DV4 - SN7893, 2024-09-05	DAE4 Sn878, 2025-03-05

Scan Setup

	Area Scan	Zoom Scan
Grid Extents [mm]	51.0 x 85.0	23.8 x 23.8 x 22.0
Grid Steps [mm]	8.5 x 8.5	3.4 x 3.4 x 1.4
Sensor Surface [mm]	3.0	1.4
Graded Grid	Yes	Yes
Grading Ratio	1.5	1.4
MAIA	Y	N/A
Surface Detection	VMS + 6p	VMS + 6p
Scan Method	Measured	Measured

Measurement Results

	Area Scan	Zoom Scan
Date	2025-06-11	2025-06-11
psSAR1g [W/kg]	0.731	0.846
psSAR10g [W/kg]	0.214	0.222
APD 4cm² [W/m²]		5.21
Power Drift [dB]	0.11	0.03
Power Scaling	Disabled	Disabled
Scaling Factor [dB]		
TSL Correction	No correction	No correction
M2/M1 [%]		58.7
Dist 3dB Peak [mm]		5.5



Meas.13 Body&Limbs Plane with Left Edge 0mm on 111 Channel in IEEE802.11ax160 mode with Main-Without Handle

Exposure Conditions

Phantom Section, TSL	Position, Test Distance [mm]	Band	Group, UID	Frequency [MHz], Channel Number	Conversion Factor	TSL Conductivity [S/m]	TSL Permittivity	Ambient Temperature [°C]	Liquid Temperature [°C]
Flat, HSL	EDGE LEFT, 0.00	U-NII-6	WLAN, 10743-AAC	6505.0, 111	5.11	6.03	34.9	22.6	21.4

Hardware Setup

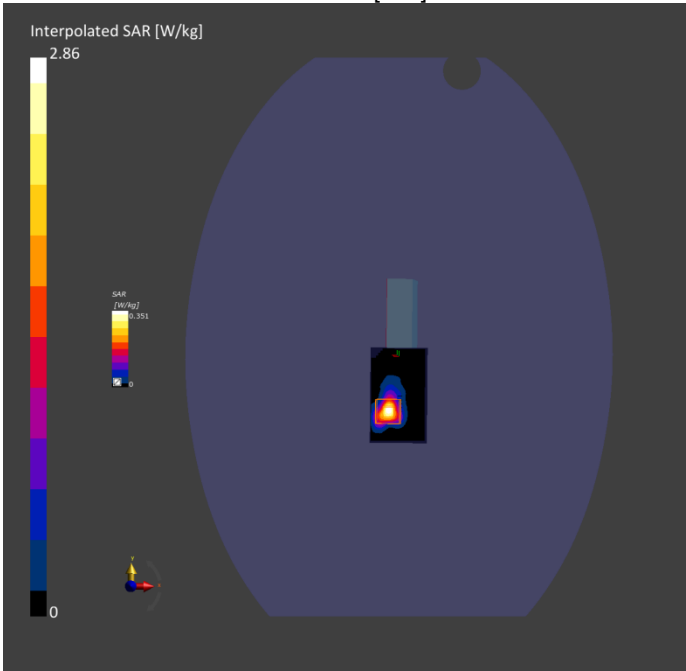
Phantom	TSL, Measured Date	Probe, Calibration Date	DAE, Calibration Date
ELI V8.0 (20deg probe tilt) - 2159	HBBL-600-10000 2025-06-11	EX3DV4 - SN7893, 2024-09-05	DAE4 Sn878, 2025-03-05

Scan Setup

	Area Scan	Zoom Scan
Grid Extents [mm]	51.0 x 85.0	23.8 x 23.8 x 22.0
Grid Steps [mm]	8.5 x 8.5	3.4 x 3.4 x 1.4
Sensor Surface [mm]	3.0	1.4
Graded Grid	Yes	Yes
Grading Ratio	1.5	1.4
MAIA	Y	N/A
Surface Detection	All points	All points
Scan Method	Measured	Measured

Measurement Results

	Area Scan	Zoom Scan
Date	2025-06-11	2025-06-11
psSAR1g [W/kg]	0.859	0.960
psSAR10g [W/kg]	0.228	0.264
APD 4cm² [W/m²]		6.16
Power Drift [dB]	0.05	0.06
Power Scaling	Disabled	Disabled
Scaling Factor [dB]		
TSL Correction	No correction	No correction
M2/M1 [%]		55.1
Dist 3dB Peak [mm]		7.0



Meas.14 Body&Limbs Plane with Back Side 0mm on 39 Channel in Bluetooth mode with Auxiliary-Strap Handle

Exposure Conditions

Phantom Section, TSL	Position, Test Distance [mm]	Band	Group, UID	Frequency [MHz], Channel Number	Conversion Factor	TSL Conductivity [S/m]	TSL Permittivity	Ambient Temperature [°C]	Liquid Temperature [°C]
Flat, HSL	BACK, 0.00	ISM 2.4 GHz Band	Bluetooth, 10032-CAA	2441.0, 39	6.98	1.81	39.3	22.5	21.2

Hardware Setup

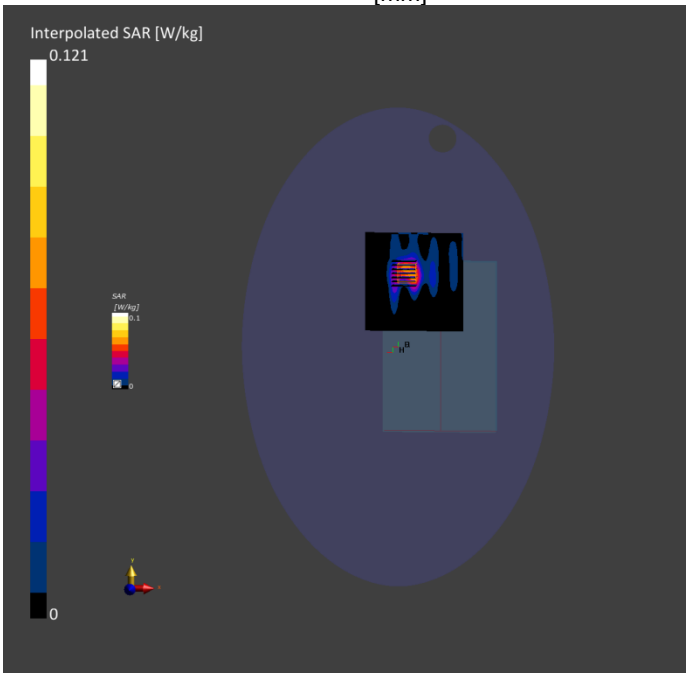
Phantom	TSL, Measured Date	Probe, Calibration Date	DAE, Calibration Date
ELI V8.0 (20deg probe tilt) - 2159	HBBL-600-10000 2025-06-04	EX3DV4 - SN7893, 2024-09-05	DAE4 Sn878, 2025-03-05

Scan Setup

	Area Scan	Zoom Scan
Grid Extents [mm]	120.0 x 120.0	30.0 x 30.0 x 30.0
Grid Steps [mm]	12.0 x 12.0	5.0 x 5.0 x 5.0
Sensor Surface [mm]	3.0	1.4
Graded Grid	Yes	Yes
Grading Ratio	1.5	1.5
MAIA	Y	Y
Surface	VMS + 6p	VMS + 6p
Detection		
Scan Method	Measured	Measured

Measurement Results

	Area Scan	Zoom Scan
Date	2025-06-04	2025-06-04
psSAR1g [W/kg]	0.125	0.128
psSAR10g [W/kg]	0.053	0.059
Power Drift [dB]	0.06	0.08
Power Scaling	Disabled	Disabled
Scaling Factor [dB]		
TSL Correction	No correction	No correction
M2/M1 [%]		53.3
Dist 3dB Peak [mm]		8.1



Meas.15 Body&Limbs Plane with Back Side 0mm on 1 Channel in IEEE802.11b mode with Auxiliary-Strap Handle

Exposure Conditions

Phantom Section, TSL	Position, Test Distance [mm]	Band	Group, UID	Frequency [MHz], Channel Number	Conversion Factor	TSL Conductivity [S/m]	TSL Permittivity	Ambient Temperature [°C]	Liquid Temperature [°C]
Flat, HSL	BACK, 0.00	WLAN 2.4GH Z	WLAN, 10415-AAA	2412.0, 1	6.98	1.77	40.3	22.4	21.3

Hardware Setup

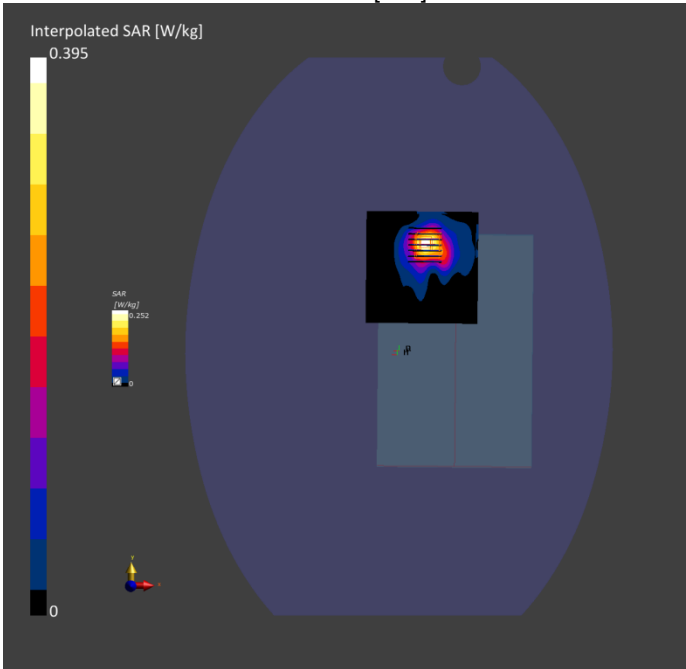
Phantom	TSL, Measured Date	Probe, Calibration Date	DAE, Calibration Date
ELI V8.0 (20deg probe tilt) - 2159	HBBL-600-10000 2025-06-05	EX3DV4 - SN7893, 2024-09-05	DAE4 Sn878, 2025-03-05

Scan Setup

	Area Scan	Zoom Scan
Grid Extents [mm]	100.0 x 100.0	30.0 x 30.0 x 30.0
Grid Steps [mm]	10.0 x 10.0	5.0 x 5.0 x 5.0
Sensor Surface [mm]	3.0	1.4
Graded Grid	Yes	Yes
Grading Ratio	1.5	1.5
MAIA	Y	N/A
Surface	VMS + 6p	VMS + 6p
Detection		
Scan Method	Measured	Measured

Measurement Results

	Area Scan	Zoom Scan
Date	2025-06-05	2025-06-05
psSAR1g [W/kg]	0.213	0.222
psSAR10g [W/kg]	0.108	0.115
Power Drift [dB]	-0.01	-0.03
Power Scaling	Disabled	Disabled
Scaling Factor [dB]		
TSL Correction	No correction	No correction
M2/M1 [%]		57.4
Dist 3dB Peak [mm]		7.6



Meas.16 Body&Limbs Plane with Back Side 0mm on 1 Channel in IEEE802.11b mode with Main-Strap Handle

Exposure Conditions

Phantom Section, TSL	Position, Test Distance [mm]	Band	Group, UID	Frequency [MHz], Channel Number	Conversion Factor	TSL Conductivity [S/m]	TSL Permittivity	Ambient Temperature [°C]	Liquid Temperature [°C]
Flat, HSL	BACK, 0.00	WLAN 2.4GH Z	WLAN, 10415-AAA	2412.0, 1	6.98	1.77	40.3	22.4	21.3

Hardware Setup

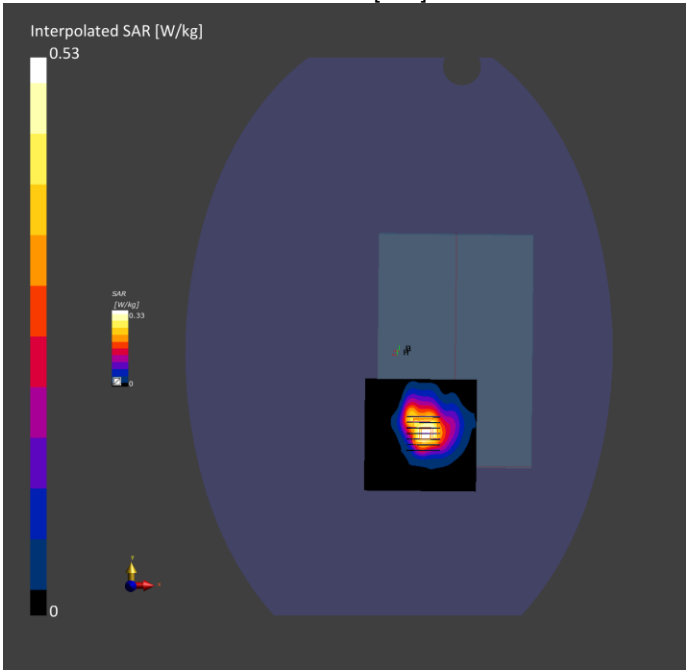
Phantom	TSL, Measured Date	Probe, Calibration Date	DAE, Calibration Date
ELI V8.0 (20deg probe tilt) - 2159	HBBL-600-10000 2025-06-05	EX3DV4 - SN7893, 2024-09-05	DAE4 Sn878, 2025-03-05

Scan Setup

	Area Scan	Zoom Scan
Grid Extents [mm]	100.0 x 100.0	30.0 x 30.0 x 30.0
Grid Steps [mm]	10.0 x 10.0	5.0 x 5.0 x 5.0
Sensor Surface [mm]	3.0	1.4
Graded Grid	Yes	Yes
Grading Ratio	1.5	1.5
MAIA	Y	N/A
Surface	VMS + 6p	VMS + 6p
Detection		
Scan Method	Measured	Measured

Measurement Results

	Area Scan	Zoom Scan
Date	2025-06-05	2025-06-05
psSAR1g [W/kg]	0.308	0.305
psSAR10g [W/kg]	0.163	0.167
Power Drift [dB]	0.03	0.04
Power Scaling	Disabled	Disabled
Scaling Factor [dB]		
TSL Correction	No correction	No correction
M2/M1 [%]		55.7
Dist 3dB Peak [mm]		10.8



Meas.17 Body&Limbs Plane with Back Side 0mm on 58 Channel in IEEE802.11ac80 mode with Auxiliary-Strap Handle

Exposure Conditions

Phantom Section, TSL	Position, Test Distance [mm]	Band	Group, UID	Frequency [MHz], Channel Number	Conversion Factor	TSL Conductivity [S/m]	TSL Permittivity	Ambient Temperature [°C]	Liquid Temperature [°C]
Flat, HSL	BACK, 0.00	WLAN 5GHz	WLAN, 10544-AAD	5290.0, 58	5.44	4.91	36.1	22.6	21.5

Hardware Setup

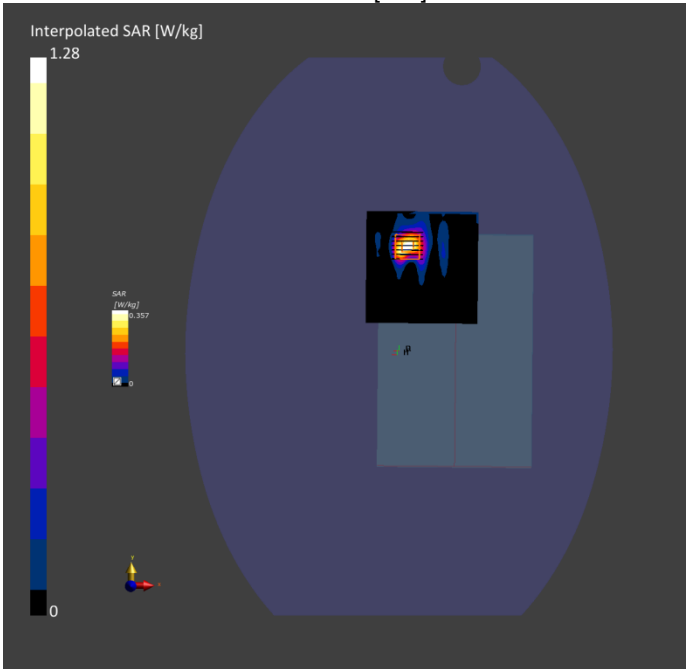
Phantom	TSL, Measured Date	Probe, Calibration Date	DAE, Calibration Date
ELI V8.0 (20deg probe tilt) - 2159	HBBL-600-10000 2025-06-06	EX3DV4 - SN7893, 2024-09-05	DAE4 Sn878, 2025-03-05

Scan Setup

	Area Scan	Zoom Scan
Grid Extents [mm]	100.0 x 100.0	24.0 x 24.0 x 22.0
Grid Steps [mm]	10.0 x 10.0	4.0 x 4.0 x 2.0
Sensor Surface [mm]	3.0	1.4
Graded Grid	Yes	Yes
Grading Ratio	1.5	1.4
MAIA	Y	Y
Surface	VMS + 6p	VMS + 6p
Detection		
Scan Method	Measured	Measured

Measurement Results

	Area Scan	Zoom Scan
Date	2025-06-06	2025-06-06
psSAR1g [W/kg]	0.358	0.379
psSAR10g [W/kg]	0.114	0.114
Power Drift [dB]	-0.06	-0.18
Power Scaling	Disabled	Disabled
Scaling Factor [dB]		
TSL Correction	No correction	No correction
M2/M1 [%]		60.8
Dist 3dB Peak [mm]		7.2



Meas.18 Body&Limbs Plane with Back Side 0mm on 58 Channel in IEEE802.11ac80 mode with Main-Strap Handle

Exposure Conditions

Phantom Section, TSL	Position, Test Distance [mm]	Band	Group, UID	Frequency [MHz], Channel Number	Conversion Factor	TSL Conductivity [S/m]	TSL Permittivity	Ambient Temperature [°C]	Liquid Temperature [°C]
Flat, HSL	BACK, 0.00	WLAN 5GHz	WLAN, 10544-AAD	5290.0, 58	5.44	4.91	36.1	22.6	21.5

Hardware Setup

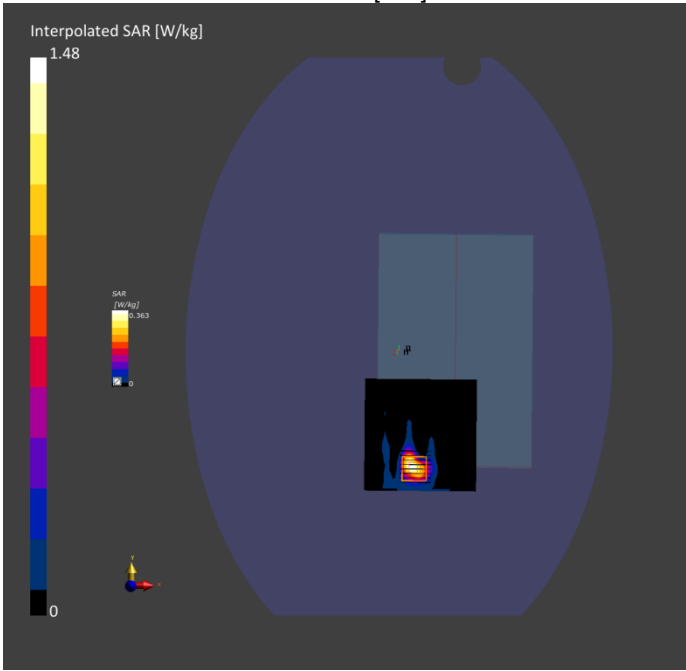
Phantom	TSL, Measured Date	Probe, Calibration Date	DAE, Calibration Date
ELI V8.0 (20deg probe tilt) - 2159	HBBL-600-10000 2025-06-06	EX3DV4 - SN7893, 2024-09-05	DAE4 Sn878, 2025-03-05

Scan Setup

	Area Scan	Zoom Scan
Grid Extents [mm]	100.0 x 100.0	24.0 x 24.0 x 22.0
Grid Steps [mm]	10.0 x 10.0	4.0 x 4.0 x 2.0
Sensor Surface [mm]	3.0	1.4
Graded Grid	Yes	Yes
Grading Ratio	1.5	1.4
MAIA	Y	Y
Surface	VMS + 6p	VMS + 6p
Detection		
Scan Method	Measured	Measured

Measurement Results

	Area Scan	Zoom Scan
Date	2025-06-06	2025-06-06
psSAR1g [W/kg]	0.362	0.419
psSAR10g [W/kg]	0.115	0.122
Power Drift [dB]	-0.05	-0.02
Power Scaling	Disabled	Disabled
Scaling Factor [dB]		
TSL Correction	No correction	No correction
M2/M1 [%]		58.4
Dist 3dB Peak [mm]		6.8



Meas.19 Body&Limbs Plane with Back Side 0mm on 114 Channel in IEEE802.11ac160 mode with Auxiliary-Strap Handle

Exposure Conditions

Phantom Section, TSL	Position, Test Distance [mm]	Band	Group, UID	Frequency [MHz], Channel Number	Conversion Factor	TSL Conductivity [S/m]	TSL Permittivity	Ambient Temperature [°C]	Liquid Temperature [°C]
Flat, HSL	BACK, 0.00	WLAN 5GHz	WLAN, 10554-AAE	5570.0, 114	4.91	5.11	36.4	22.3	21.4

Hardware Setup

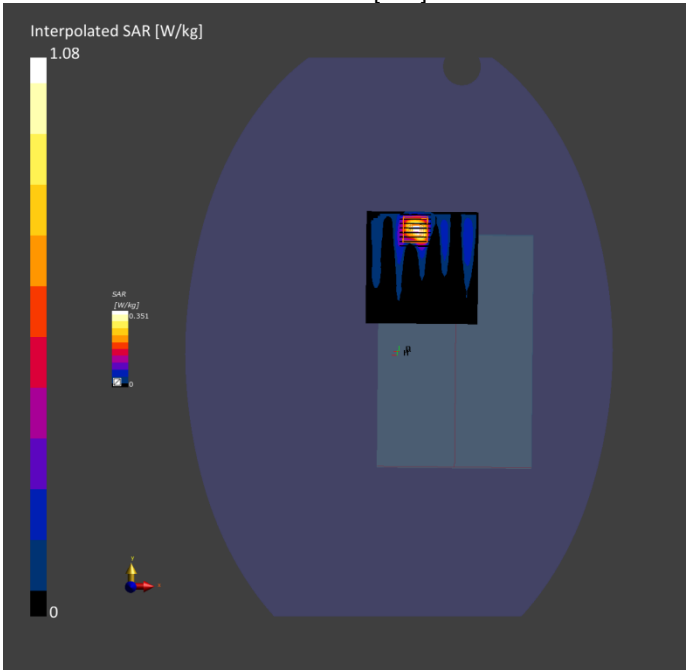
Phantom	TSL, Measured Date	Probe, Calibration Date	DAE, Calibration Date
ELI V8.0 (20deg probe tilt) - 2159	HBBL-600-10000 2025-06-07	EX3DV4 - SN7893, 2024-09-05	DAE4 Sn878, 2025-03-05

Scan Setup

	Area Scan	Zoom Scan
Grid Extents [mm]	100.0 x 100.0	24.0 x 24.0 x 22.0
Grid Steps [mm]	10.0 x 10.0	4.0 x 4.0 x 2.0
Sensor Surface [mm]	3.0	1.4
Graded Grid	Yes	Yes
Grading Ratio	1.5	1.4
MAIA	Y	Y
Surface	All points	VMS + 6p
Detection		
Scan Method	Measured	Measured

Measurement Results

	Area Scan	Zoom Scan
Date	2025-06-07	2025-06-07
psSAR1g [W/kg]	0.250	0.294
psSAR10g [W/kg]	0.077	0.085
Power Drift [dB]	-0.18	-0.08
Power Scaling	Disabled	Disabled
Scaling Factor [dB]		
TSL Correction	No correction	No correction
M2/M1 [%]		57.1
Dist 3dB Peak [mm]		7.2



Meas.20 Body&Limbs Plane with Back Side 0mm on 114 Channel in IEEE802.11ac160 mode with Main-Strap Handle

Exposure Conditions

Phantom Section, TSL	Position, Test Distance [mm]	Band	Group, UID	Frequency [MHz], Channel Number	Conversion Factor	TSL Conductivity [S/m]	TSL Permittivity	Ambient Temperature [°C]	Liquid Temperature [°C]
Flat, HSL	BACK, 0.00	WLAN 5GHz	WLAN, 10554-AAE	5570.0, 114	4.91	5.11	36.4	22.3	21.4

Hardware Setup

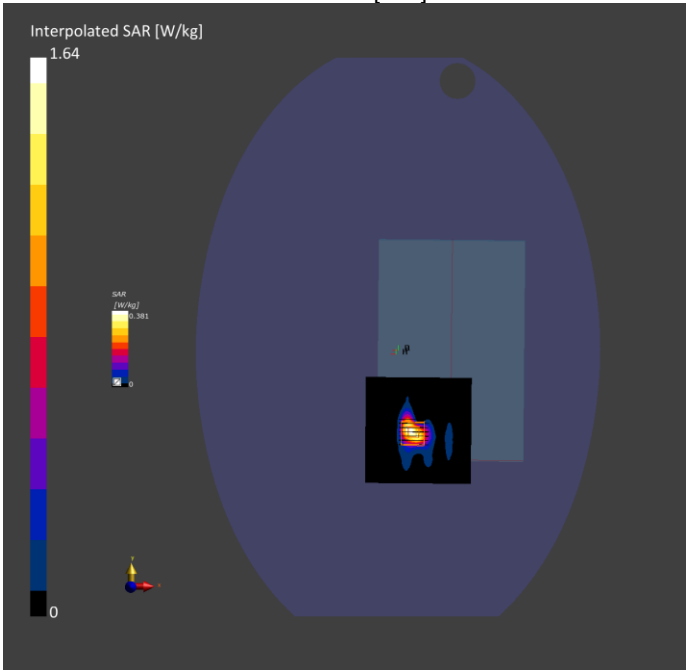
Phantom	TSL, Measured Date	Probe, Calibration Date	DAE, Calibration Date
ELI V8.0 (20deg probe tilt) - 2159	HBBL-600-10000 2025-06-07	EX3DV4 - SN7893, 2024-09-05	DAE4 Sn878, 2025-03-05

Scan Setup

	Area Scan	Zoom Scan
Grid Extents [mm]	100.0 x 100.0	24.0 x 24.0 x 22.0
Grid Steps [mm]	10.0 x 10.0	4.0 x 4.0 x 2.0
Sensor Surface [mm]	3.0	1.4
Graded Grid	Yes	Yes
Grading Ratio	1.5	1.4
MAIA	Y	Y
Surface	VMS + 6p	VMS + 6p
Detection		
Scan Method	Measured	Measured

Measurement Results

	Area Scan	Zoom Scan
Date	2025-06-07	2025-06-07
psSAR1g [W/kg]	0.391	0.449
psSAR10g [W/kg]	0.120	0.127
Power Drift [dB]	-0.05	-0.02
Power Scaling	Disabled	Disabled
Scaling Factor [dB]		
TSL Correction	No correction	No correction
M2/M1 [%]		56.5
Dist 3dB Peak [mm]		6.8



Meas.21 Body&Limbs Plane with Back Side 0mm on 155 Channel in IEEE802.11ac80 mode with Auxiliary-Strap Handle

Exposure Conditions

Phantom Section, TSL	Position, Test Distance [mm]	Band	Group, UID	Frequency [MHz], Channel Number	Conversion Factor	TSL Conductivity [S/m]	TSL Permittivity	Ambient Temperature [°C]	Liquid Temperature [°C]
Flat, HSL	BACK, 0.00	WLAN 5GHz	WLAN, 10544-AAD	5775.0, 155	4.98	5.23	34.7	22.2	21.2

Hardware Setup

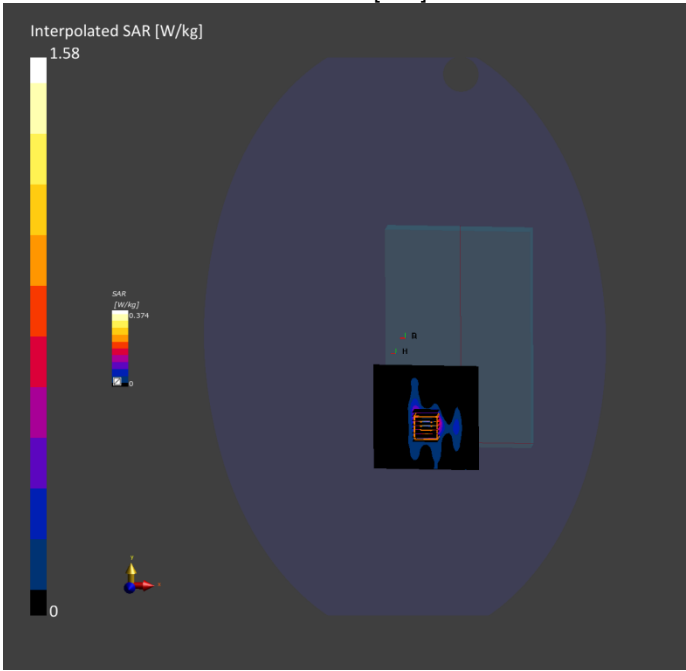
Phantom	TSL, Measured Date	Probe, Calibration Date	DAE, Calibration Date
ELI V8.0 (20deg probe tilt) - 2159	HBBL-600-10000 2025-06-09	EX3DV4 - SN7893, 2024-09-05	DAE4 Sn878, 2025-03-05

Scan Setup

	Area Scan	Zoom Scan
Grid Extents [mm]	100.0 x 100.0	24.0 x 24.0 x 22.0
Grid Steps [mm]	10.0 x 10.0	4.0 x 4.0 x 2.0
Sensor Surface [mm]	3.0	1.4
Graded Grid	Yes	Yes
Grading Ratio	1.5	1.4
MAIA	Y	Y
Surface	VMS + 6p	VMS + 6p
Detection		
Scan Method	Measured	Measured

Measurement Results

	Area Scan	Zoom Scan
Date	2025-06-09	2025-06-09
psSAR1g [W/kg]	0.357	0.408
psSAR10g [W/kg]	0.108	0.116
Power Drift [dB]	-0.14	-0.17
Power Scaling	Disabled	Disabled
Scaling Factor [dB]		
TSL Correction	No correction	No correction
M2/M1 [%]		54.2
Dist 3dB Peak [mm]		6.4



Meas.22 Body&Limbs Plane with Back Side 0mm on 155 Channel in IEEE802.11ac80 mode with Main-Strap Handle

Exposure Conditions

Phantom Section, TSL	Position, Test Distance [mm]	Band	Group, UID	Frequency [MHz], Channel Number	Conversion Factor	TSL Conductivity [S/m]	TSL Permittivity	Ambient Temperature [°C]	Liquid Temperature [°C]
Flat, HSL	BACK, 0.00	WLAN 5GHz	WLAN, 10544-AAD	5775.0, 155	4.98	5.23	34.7	22.2	21.2

Hardware Setup

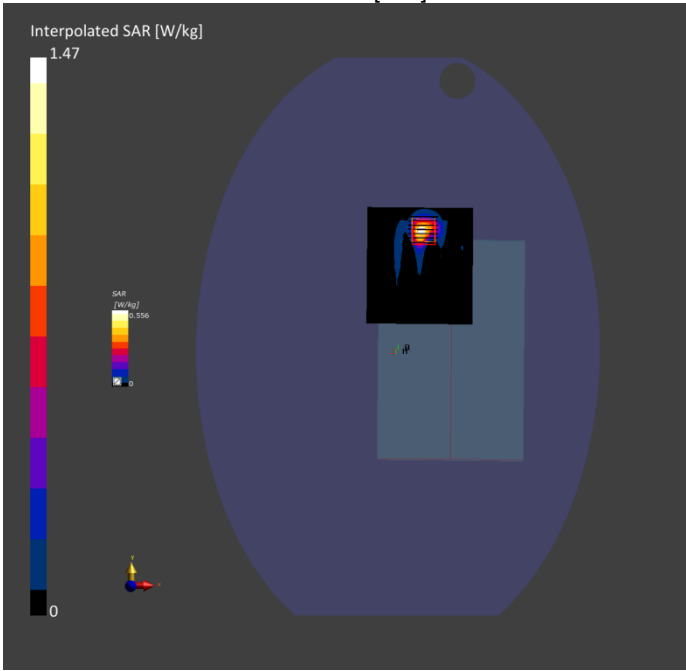
Phantom	TSL, Measured Date	Probe, Calibration Date	DAE, Calibration Date
ELI V8.0 (20deg probe tilt) - 2159	HBBL-600-10000 2025-06-09	EX3DV4 - SN7893, 2024-09-05	DAE4 Sn878, 2025-03-05

Scan Setup

	Area Scan	Zoom Scan
Grid Extents [mm]	100.0 x 100.0	24.0 x 24.0 x 22.0
Grid Steps [mm]	10.0 x 10.0	4.0 x 4.0 x 2.0
Sensor Surface [mm]	3.0	1.4
Graded Grid	Yes	Yes
Grading Ratio	1.5	1.4
MAIA	Y	Y
Surface	All points	All points
Detection		
Scan Method	Measured	Measured

Measurement Results

	Area Scan	Zoom Scan
Date	2025-06-09	2025-06-09
psSAR1g [W/kg]	0.363	0.384
psSAR10g [W/kg]	0.106	0.108
Power Drift [dB]	-0.04	-0.09
Power Scaling	Disabled	Disabled
Scaling Factor [dB]		
TSL Correction	No correction	No correction
M2/M1 [%]		53.1
Dist 3dB Peak [mm]		7.2



Meas.23 Body&Limbs Plane with Back Side 0mm on 163 Channel in IEEE802.11ac160 mode with Auxiliary-Strap Handle

Exposure Conditions

Phantom Section, TSL	Position, Test Distance [mm]	Band	Group, UID	Frequency [MHz], Channel Number	Conversion Factor	TSL Conductivity [S/m]	TSL Permittivity	Ambient Temperature [°C]	Liquid Temperature [°C]
Flat, HSL	BACK, 0.00	CUSTOM Band	CW, 10554-AAE	5815.0, 163	4.98	5.36	34.5	22.3	21.3

Hardware Setup

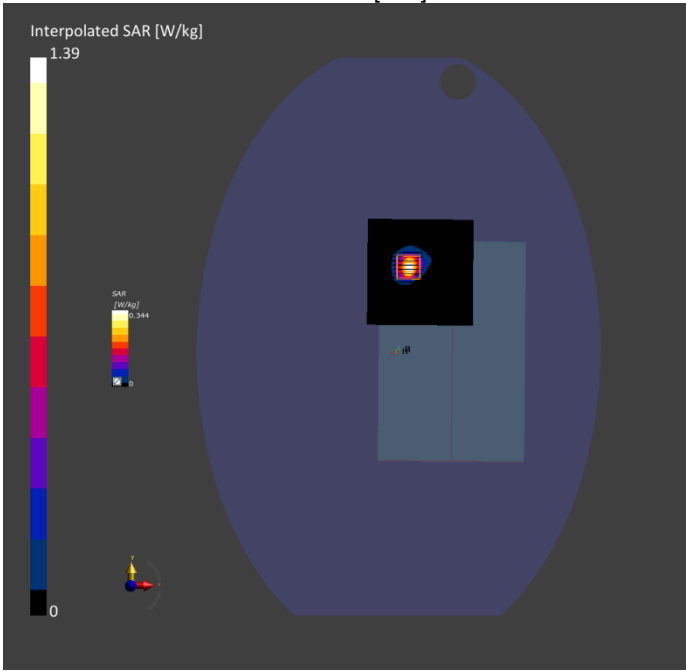
Phantom	TSL, Measured Date	Probe, Calibration Date	DAE, Calibration Date
ELI V8.0 (20deg probe tilt) - 2159	HBBL-600-10000 2025-06-10	EX3DV4 - SN7893, 2024-09-05	DAE4 Sn878, 2025-03-05

Scan Setup

	Area Scan	Zoom Scan
Grid Extents [mm]	100.0 x 100.0	24.0 x 24.0 x 22.0
Grid Steps [mm]	10.0 x 10.0	4.0 x 4.0 x 2.0
Sensor Surface [mm]	3.0	1.4
Graded Grid	Yes	Yes
Grading Ratio	1.5	1.4
MAIA	Y	Y
Surface	VMS + 6p	VMS + 6p
Detection		
Scan Method	Measured	Measured

Measurement Results

	Area Scan	Zoom Scan
Date	2025-06-10	2025-06-10
psSAR1g [W/kg]	0.306	0.343
psSAR10g [W/kg]	0.092	0.098
Power Drift [dB]	0.06	0.08
Power Scaling	Disabled	Disabled
Scaling Factor [dB]		
TSL Correction	No correction	No correction
M2/M1 [%]		51.1
Dist 3dB Peak [mm]		6.8



Meas.24 Body&Limbs Plane with Back Side 0mm on 163 Channel in IEEE802.11ac160 mode with Main-Strap Handle

Exposure Conditions

Phantom Section, TSL	Position, Test Distance [mm]	Band	Group, UID	Frequency [MHz], Channel Number	Conversion Factor	TSL Conductivity [S/m]	TSL Permittivity	Ambient Temperature [°C]	Liquid Temperature [°C]
Flat, HSL	BACK, 0.00	CUSTOM Band	CW, 10554-AAE	5815.0, 163	4.98	5.36	34.5	22.3	21.3

Hardware Setup

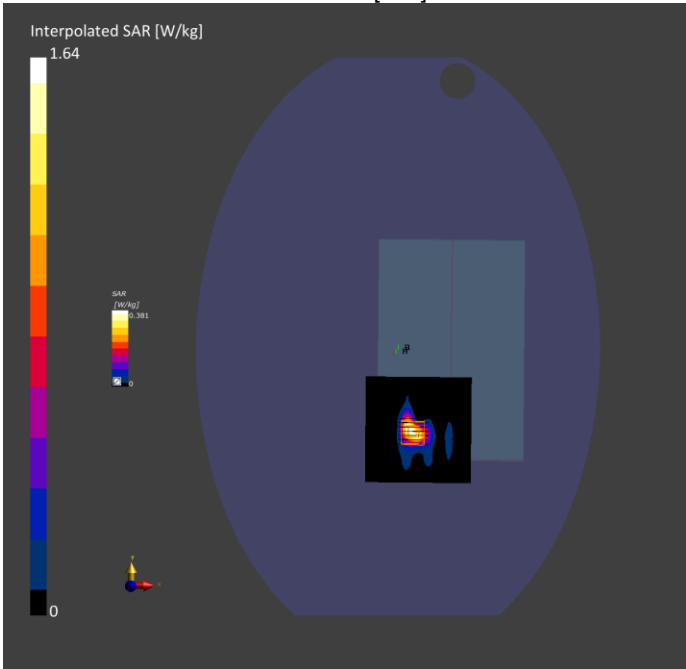
Phantom	TSL, Measured Date	Probe, Calibration Date	DAE, Calibration Date
ELI V8.0 (20deg probe tilt) - 2159	HBBL-600-10000 2025-06-10	EX3DV4 - SN7893, 2024-09-05	DAE4 Sn878, 2025-03-05

Scan Setup

	Area Scan	Zoom Scan
Grid Extents [mm]	100.0 x 100.0	24.0 x 24.0 x 22.0
Grid Steps [mm]	10.0 x 10.0	4.0 x 4.0 x 2.0
Sensor Surface [mm]	3.0	1.4
Graded Grid	Yes	Yes
Grading Ratio	1.5	1.4
MAIA	Y	Y
Surface	VMS + 6p	VMS + 6p
Detection		
Scan Method	Measured	Measured

Measurement Results

	Area Scan	Zoom Scan
Date	2025-06-10	2025-06-10
psSAR1g [W/kg]	0.338	0.394
psSAR10g [W/kg]	0.106	0.111
Power Drift [dB]	-0.07	-0.05
Power Scaling	Disabled	Disabled
Scaling Factor [dB]		
TSL Correction	No correction	No correction
M2/M1 [%]		52.5
Dist 3dB Peak [mm]		6.4



Meas.25 Body&Limbs Plane with Back Side 0mm on 15 Channel in IEEE802.11ax160 mode with Main-Strap Handle

Exposure Conditions

Phantom Section, TSL	Position, Test Distance [mm]	Band	Group, UID	Frequency [MHz], Channel Number	Conversion Factor	TSL Conductivity [S/m]	TSL Permittivity	Ambient Temperature [°C]	Liquid Temperature [°C]
Flat, HSL	BACK, 0.00	U-NII-5	WLAN, 10743-AAC	6025.0, 15	5.11	5.40	35.8	22.6	21.4

Hardware Setup

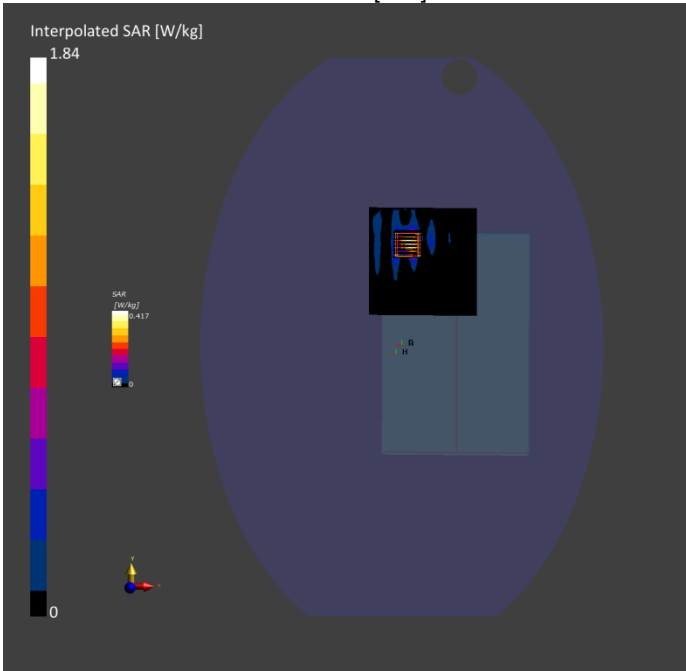
Phantom	TSL, Measured Date	Probe, Calibration Date	DAE, Calibration Date
ELI V8.0 (20deg probe tilt) - 2159	HBBL-600-10000 2025-06-11	EX3DV4 - SN7893, 2024-09-05	DAE4 Sn878, 2025-03-05

Scan Setup

	Area Scan	Zoom Scan
Grid Extents [mm]	102.0 x 102.0	22.0 x 22.0 x 22.0
Grid Steps [mm]	8.5 x 8.5	3.4 x 3.4 x 1.4
Sensor Surface [mm]	3.0	1.4
Graded Grid	Yes	Yes
Grading Ratio	1.5	1.4
MAIA	Y	Y
Surface Detection	VMS + 6p	VMS + 6p
Scan Method	Measured	Measured

Measurement Results

	Area Scan	Zoom Scan
Date	2025-06-11	2025-06-11
psSAR1g [W/kg]	0.540	0.557
psSAR10g [W/kg]	0.148	0.154
APD 4cm² [W/m²]		2.78
Power Drift [dB]	0.02	0.03
Power Scaling	Disabled	Disabled
Scaling Factor [dB]		
TSL Correction	No correction	No correction
M2/M1 [%]		61.9
Dist 3dB Peak [mm]		6.7



Meas.26 Body&Limbs Plane with Back Side 0mm on 47 Channel in IEEE802.11ax160 mode with Main-Strap Handle

Exposure Conditions

Phantom Section, TSL	Position, Test Distance [mm]	Band	Group, UID	Frequency [MHz], Channel Number	Conversion Factor	TSL Conductivity [S/m]	TSL Permittivity	Ambient Temperature [°C]	Liquid Temperature [°C]
Flat, HSL	BACK, 0.00	U-NII-5	WLAN, 10743-AAC	6185.0, 47	5.11	5.51	35.5	22.6	21.4

Hardware Setup

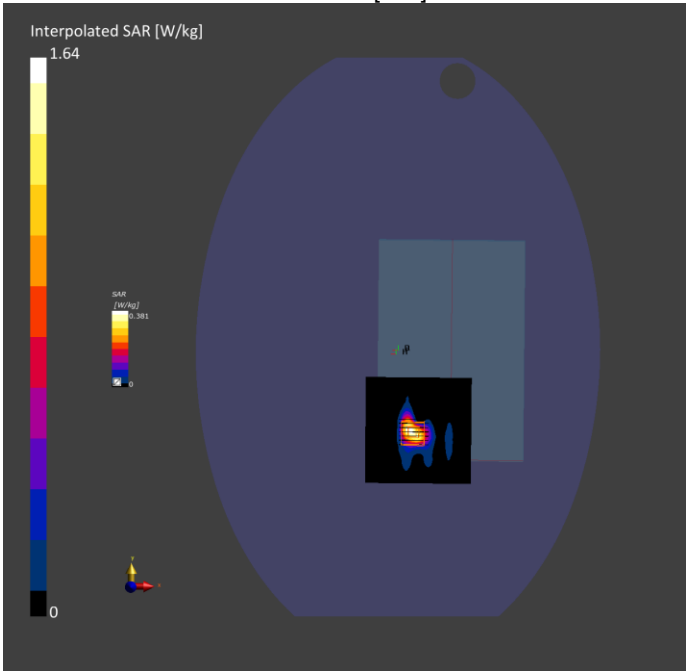
Phantom	TSL, Measured Date	Probe, Calibration Date	DAE, Calibration Date
ELI V8.0 (20deg probe tilt) - 2159	HBBL-600-10000 2025-06-11	EX3DV4 - SN7893, 2024-09-05	DAE4 Sn878, 2025-03-05

Scan Setup

	Area Scan	Zoom Scan
Grid Extents [mm]	102.0 x 102.0	22.0 x 22.0 x 22.0
Grid Steps [mm]	8.5 x 8.5	3.4 x 3.4 x 1.4
Sensor Surface [mm]	3.0	1.4
Graded Grid	Yes	Yes
Grading Ratio	1.5	1.4
MAIA	Y	Y
Surface Detection	VMS + 6p	VMS + 6p
Scan Method	Measured	Measured

Measurement Results

	Area Scan	Zoom Scan
Date	2025-06-11	2025-06-11
psSAR1g [W/kg]	0.320	0.350
psSAR10g [W/kg]	0.085	0.096
APD 4cm² [W/m²]		1.84
Power Drift [dB]	0.04	0.02
Power Scaling	Disabled	Disabled
Scaling Factor [dB]		
TSL Correction	No correction	No correction
M2/M1 [%]		61.1
Dist 3dB Peak [mm]		6.7



--BLANK BELOW--