



A Test Lab Techno Corp.

Changan Lab : No. 140 -1, Changan Street, Bade City, Taoyuan County, Taiwan R.O.C.

Tel : 886-3-271-0188 / Fax : 886-3-271-0190

SAR EVALUATION REPORT



Test Report No.	:	1306FS13-03
Applicant	:	Giant Telecom Ltd.
Product Type	:	Walkie Talkie
Trade Name	:	Motorola
Model Number	:	MU560CR, MU350R, MU351R
Date of Received	:	May 02, 2013
Test Period	:	May 09 ~ Jun. 04, 2013
Date of Issued	:	Aug. 12, 2013
Test Environment	:	Ambient Temperature : $22 \pm 2^{\circ} \text{C}$ Relative Humidity : 40 - 70 %
Standard	:	ANSI/IEEE C95.1-1999 IEEE Std. 1528-2003 IEEE Std. 1528a-2005 47 CFR Part §2.1093; FCC/OET Bulletin 65 Supplement C [July 2001]
Max. Reported SAR	:	0.126 W/kg Brain SAR (50% Duty Cycle) 1.366 W/kg Muscle SAR (50% Duty Cycle)
Test Lab Location	:	Chang-an Lab



1. The test operations have to be performed with cautious behavior, the test results are as attached.
2. The test results are under chamber environment of A Test Lab Techno Corp. A Test Lab Techno Corp. does not assume responsibility for any conclusions and generalizations drawn from the test results with regard to other specimens or samples.
3. The measurement report has to be written approval of A Test Lab Techno Corp. It may only be reproduced or published in full. This report shall not be reproduced except in full, without the written approval of A Test Lab Techno Corp. The test results in the report only apply to the tested sample.

Approved By

: Yung-Tan Tsai
(Yung Tan Tsai)

Tested By

: Bill Hu
(Bill Hu)



Contents

1. Description of Equipment under Test (EUT)	3
2. Introduction.....	4
2.1 SAR Definition	4
3. SAR Measurement Setup	5
3.1 DASY E-Field Probe System.....	6
3.2 Data Acquisition Electronic (DAE) System	9
3.3 Robot.....	9
3.4 Measurement Server	9
3.5 Device Holder	10
3.6 Phantom - SAM v4.0	10
3.7 Oval Flat Phantom - ELI 4.0	11
3.8 Data Storage and Evaluation.....	11
4. Tissue Simulating Liquids.....	14
4.1 Ingredients.....	15
4.2 Recipes.....	15
4.3 Liquid Depth	16
5. SAR Testing with RF Transmitters	17
5.1 Conducted Power.....	17
5.2 Antenna Location	17
5.3 SAR test reduction according to KDB	19
6. System Verification and Validation	20
6.1 Symmetric Dipoles for System Verification	20
6.2 Liquid Parameters	21
6.3 Verification Summary	22
6.4 Validation Summary	22
7. Test Equipment List.....	23
8. Measurement Uncertainty	24
9. Measurement Procedure.....	26
9.1 Spatial Peak SAR Evaluation	26
9.2 Area & Zoom Scan Procedures	27
9.3 Volume Scan Procedures.....	27
9.4 SAR Averaged Methods	27
9.5 Power Drift Monitoring.....	27
10. SAR Test Results Summary	28
10.1 Brain Measurement SAR.....	28
10.2 Muscle SAR Measurement SAR	29
10.3 Hot-spot mode Measurement SAR	31
10.4 Extremity Measurement SAR	31
10.5 SAR Measurement Variability.....	31
10.6 Std. C95.1-1999 RF Exposure Limit.....	32
11. Conclusion.....	33
12. References.....	33
13. SAR Measurement Guidance	33
Appendix A - System Performance Check	34
Appendix B - SAR Measurement Data	37
Appendix C - Calibration.....	52



1. Description of Equipment under Test (EUT)

Applicant	Giant Telecom Ltd.	
Applicant Address	33/F, AIA Kowloon Tower, Landmark East, 100 How Ming Street, Kwun Tong, Kowloon	
Manufacture	DONGGUAN WISETRONICS TELECOM EQUIPMENT CO. LTD.	
Manufacture Address	Elite Industrial City, Melin District, Dailing Mount Town, Dongguan Guangdong, China	
Product Type	Walkie Talkie	
Trade Name	Motorola	
Model Number	MU560CR, MU350R, MU351R	
FCC ID	RAQMUEFJ	
RF Function	FRS / GMRS	
Tx Frequency	Band	Operate Frequency (MHz)
	FRS	467.5625 - 467.7125
	GMRS	462.5500 - 462.7250
	Bluetooth	2402 - 2480
RF Conducted Power (Avg.)	Band	Power (W / dBm)
	FRS	0.325 / 25.12
	GMRS	1.403 / 31.47
	Bluetooth	0.003 / 4.558
Max. Reported SAR	0.126 W/kg Brain SAR (50% Duty Cycle) 1.366 W/kg Muscle SAR (50% Duty Cycle)	
Device Category	Portable Device	
RF Exposure Environment	General Population / Uncontrolled	
Application Type	Certification	

This wireless portable device has been shown to be capable of compliance for localized specific absorption rate (SAR) for uncontrolled environment / general population exposure limits specified in Standard C95.1-1999 and had been tested in accordance with the measurement procedures specified in IEEE Std. 1528-2003 and IEEE Std. 1528a-2005.

2. Introduction

The A Test Lab Techno Corp. has performed measurements of the maximum potential exposure to the user of **Giant Telecom Ltd. Trade Name : Motorola Model(s) : MU560CR, MU350R, MU351R**. The test procedures, as described in American National Standards, Institute C95.1-1999 [1] , FCC/OET Bulletin 65 Supplement C [July 2001] were employed and they specify the maximum exposure limit of 1.6mW/g as averaged over any 1 gram of tissue for portable devices being used within 20cm between user and EUT in the uncontrolled environment. A description of the product and operating configuration, detailed summary of the test results, methodology and procedures used in the equipment used are included within this test report.

2.1 SAR Definition

Specific Absorption Rate (SAR) is defined as the time derivative (rate) of the incremental energy (dw) absorbed by (dissipated in) an incremental mass (dm) contained in a volume element (dv) of a given density (ρ). It is also defined as the rate of RF energy absorption per unit mass at a point in an absorbing body (see Figure 2).

$$SAR = \frac{d}{dt} \left(\frac{dw}{dm} \right) = \frac{d}{dt} \left(\frac{dw}{\rho dv} \right)$$

Figure 2. SAR Mathematical Equation

SAR is expressed in units of Watts per kilogram (W/kg)

$$SAR = \frac{\sigma E^2}{\rho}$$

Where :

σ = conductivity of the tissue (S/m)

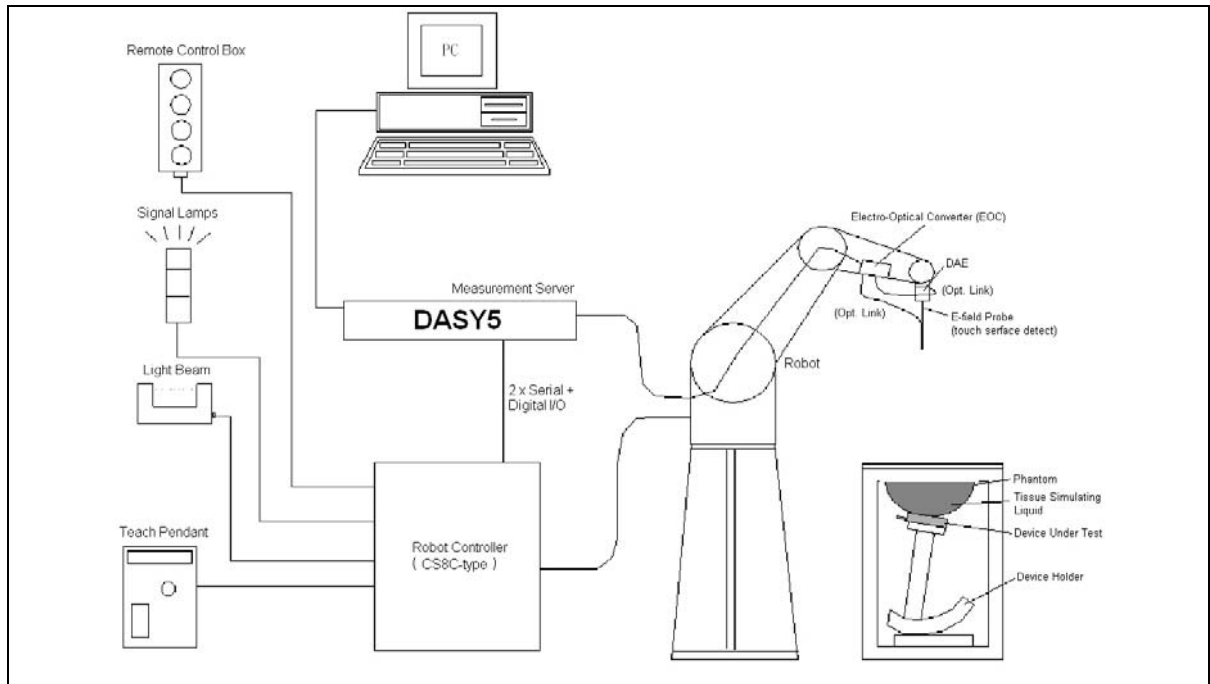
ρ = mass density of the tissue (kg/m³)

E = RMS electric field strength (V/m)

* Note :

The primary factors that control rate of energy absorption were found to be the wavelength of the incident field in relations to the dimensions and geometry of the irradiated organism, the orientation of the organism in relation to the polarity of field vectors, the presence of reflecting surfaces, and whether conductive contact is made by the organism with a ground plane [2]

3. SAR Measurement Setup



The DASY5 system for performing compliance tests consists of the following items:

1. A standard high precision 6-axis robot (Stäubli TX family) with controller, teach pendant and software. An arm extension for accommodating the data acquisition electronics (DAE).
2. A dosimetric probe, i.e., an isotropic E-field probe optimized and calibrated for usage in tissue simulating liquid. The probe is equipped with an optical surface detector system.
3. A data acquisition electronics (DAE) which performs the signal amplification, signal multiplexing, AD-conversion, offset measurements, mechanical surface detection, collision detection, etc. The unit is battery powered with standard or rechargeable batteries. The signal is optically transmitted to the EOC.
4. The function of the measurement server is to perform the time critical tasks such as signal filtering, control of the robot operation and fast movement interrupts.
5. A probe alignment unit which improves the (absolute) accuracy of the probe positioning.
6. A computer operating Windows 2000 or Windows XP.
7. DASY5 software.
8. Remote controls with teach pendant and additional circuitry for robot safety such as warning lamps, etc.
9. The SAM twin phantom enabling testing left-hand and right-hand usage.
10. The device holder for handheld mobile phones.
11. Tissue simulating liquid mixed according to the given recipes.
12. Validation dipole kits allowing validating the proper functioning of the system.



3.1 DASY E-Field Probe System

The SAR measurements were conducted with the dosimetric probe (manufactured by SPEAG), designed in the classical triangular configuration [3] and optimized for dosimetric evaluation. The probe is constructed using the thick film technique; with printed resistive lines on ceramic substrates. The probe is equipped with an optical multi-fiber line ending at the front of the probe tip. It is connected to the EOC box on the robot arm and provides an automatic detection of the phantom surface. Half of the fibers are connected to a pulsed infrared transmitter, the other half to a synchronized receiver. As the probe approaches the surface, the reflection from the surface produces a coupling from the transmitting to the receiving fibers. This reflection increases first during the approach, reaches maximum and then decreases. If the probe is flatly touching the surface, the coupling is zero. The distance of the coupling maximum to the surface is independent of the surface reflectivity and largely independent of the surface to probe angle. The DASY software reads the reflection during a software approach and looks for the maximum using a 2nd order fitting. The approach is stopped when reaching the maximum.

3.1.1 E-Field Probe Specification

Construction	<p>Symmetrical design with triangular core</p> <p>Built-in optical fiber for surface detection System</p> <p>Built-in shielding against static charges</p> <p>PEEK enclosure material (resistant to organic solvents, e.q., glycol)</p>
Calibration	<p>In air from 10 MHz to 6 GHz</p> <p>In brain and muscle simulating tissue at frequencies of 450MHz (accuracy $\pm 8\%$)</p> <p>Calibration for other liquids and frequencies upon request</p>
Frequency	± 0.2 dB (30 MHz to 6 GHz)
Directivity	<p>± 0.3 dB in brain tissue (rotation around probe axis)</p> <p>± 0.5 dB in brain tissue (rotation normal probe axis)</p> <p>Dynamic Range 10μW/g to > 100mW/g; Linearity: ± 0.2dB</p>
Dimensions	<p>Overall length: 337mm</p> <p>Tip length: 9mm</p> <p>Body diameter: 10mm</p> <p>Tip diameter: 2.5mm</p> <p>Distance from probe tip to dipole centers: 1.0mm</p>
Application	<p>General dosimetry up to 6GHz</p> <p>Compliance tests of mobile phones</p> <p>Fast automatic scanning in arbitrary phantoms</p>



Figure 3. E-field Probe

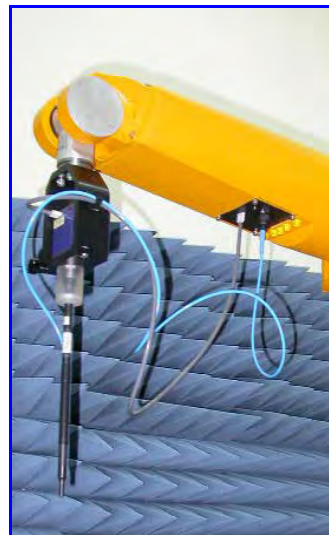


Figure 4. Probe setup on robot



3.1.2 E-Field Probe Calibration process

Dosimetric Assessment Procedure

Each E-Probe/Probe Amplifier combination has unique calibration parameters. A TEM cell calibration procedure is conducted to determine the proper amplifier settings to enter in the probe parameters. The amplifier settings are determined for a given frequency by subjecting the probe to a known E-field density (1 mW/cm²) using an RF Signal generator, TEM cell, and RF Power Meter.

Free Space Assessment

The free space E-field from amplified probe outputs is determined in a test chamber. This calibration can be performed in a TEM cell if the frequency is below 1 GHz and in a waveguide or other methodologies above 1 GHz for free space. For the free space calibration, the probe is placed in the volumetric center of the cavity and at the proper orientation with the field. The probe is rotated 360 degrees until the three channels show the maximum reading. The power density readings equates to 1 mW/cm².

Temperature Assessment

E-field temperature correlation calibration is performed in a flat phantom filled with the appropriate simulated head tissue. The E-field in the medium correlates with the temperature rise in the dielectric medium. For temperature correlation calibration a RF transparent thermistor-based temperature probe is used in conjunction with the E-field probe.

$$SAR = C \frac{\Delta T}{\Delta t}$$

Where :

Δt = Exposure time (30 seconds),

C = Heat capacity of tissue (head or body),

ΔT = Temperature increase due to RF exposure.

$$\text{Or } SAR = \frac{|E|^2 \sigma}{\rho}$$

Where :

σ = Simulated tissue conductivity,

ρ = Tissue density (kg/m³).



3.2 Data Acquisition Electronic (DAE) System

Cell Controller

Processor : Intel Core(TM)2 CPU
Clock Speed : @ 1.86GHz
Operating System : Windows XP Professional

Data Converter

Features : Signal Amplifier, multiplexer, A/D converter, and control logic
Software : DASY5 v5.0 (Build 125) & SEMCAD X Version 13.4 Build 125
Connecting Lines : Optical downlink for data and status info
Optical uplink for commands and clock

3.3 Robot

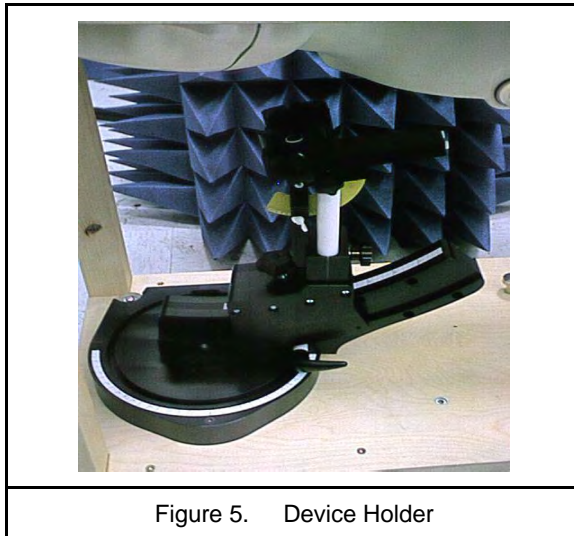
Positioner : Stäubli Unimation Corp. Robot Model: TX90XL
Repeatability : ± 0.02 mm
No. of Axis : 6

3.4 Measurement Server

Processor : PC/104 with a 400MHz intel ULV Celeron
I/O-board : Link to DAE4 (or DAE3)
16-bit A/D converter for surface detection system
Digital I/O interface
Serial link to robot
Direct emergency stop output for robot

3.5 Device Holder

The DASY device holder is constructed of low-loss POM material having the following dielectric parameters: relative permittivity $\epsilon=3$ and loss tangent $\delta=0.02$. The amount of dielectric material has been reduced in the closest vicinity of the device, since measurements have suggested that the influence of the clamp on the test results could thus be lowered.



3.6 Phantom - SAM v4.0

The shell corresponds to the specifications of the Specific Anthropomorphic Mannequin (SAM) phantom defined in IEEE 1528 and IEC 62209. It enables the dosimetric evaluation of left and right hand phone usage as well as body mounted usage at the flat phantom region. A cover prevents evaporation of the liquid. Reference markings on the phantom allow the complete setup of all predefined phantom positions and measurement grids by manually teaching three points with the robot.

Shell Thickness	2 ± 0.2 mm
Filling Volume	Approx. 25 liters
Dimensions	1000x500 mm (LxW)
Table 1. Specification of SAM v4.0	



Figure 6. SAM Twin Phantom

3.7 Oval Flat Phantom - ELI 4.0

The shell corresponds to the specifications of the Specific Anthropomorphic Mannequin (Oval Flat) phantom defined in IEEE 1528-2003, IEEE Std. 1528a-2005, CENELEC 50361 and IEC 62209. It enables the dosimetric evaluation of wireless portable device usage as well as body mounted usage at the flat phantom region. A cover prevents evaporation of the liquid. Reference markings on the phantom allow the complete setup of all predefined phantom positions and measurement grids by manually teaching three points with the robot.

Shell Thickness	2 ± 0.2 mm
Filling Volume	Approx. 30 liters
Dimensions	190×600×400 mm (H×L×W)
Table 2. Specification of ELI 4.0	

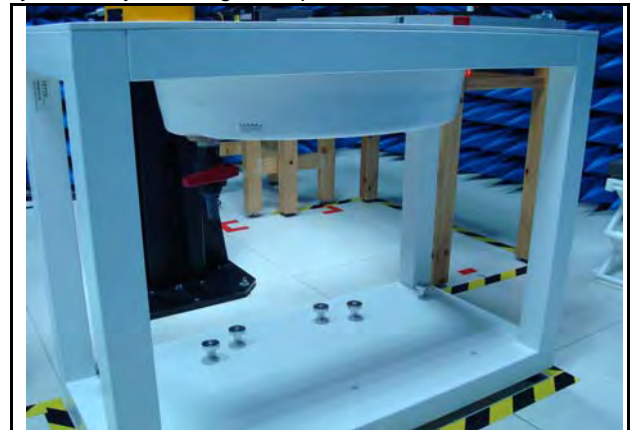


Figure 7. Oval Flat Phantom

3.8 Data Storage and Evaluation

3.8.1 Data Storage

The DASY software stores the assessed data from the data acquisition electronics as raw data (in microvolt readings from the probe sensors), together with all the necessary software parameters for the data evaluation (probe calibration data, liquid parameters and device frequency and modulation data) in measurement files with the extension DA4 or DA5. The post processing software evaluates the desired unit and format for output each time the data is visualized or exported. This allows verification of the complete software setup even after the measurement and allows correction of erroneous parameter settings. For example, if a measurement has been performed with an incorrect crest factor parameter in the device setup, the parameter can be corrected afterwards and the data can be reevaluated.

3.8.2 Data Evaluation

The DASY post processing software (SEMCAD) automatically executes the following procedures to calculate the field units from the microvolt readings at the probe connector. The parameters used in the evaluation are stored in the configuration modules of the software :

- Probe parameters : - Sensitivity $Norm_i, ai0, ai1, ai2$
 - Conversion factor $ConvFi$
 - Diode compression point dcp_i
- Device parameters : - Frequency f
 - Crest factor cf
- Media parameters : - Conductivity σ
 - Density ρ

These parameters must be set correctly in the software. They can be found in the component documents or they can be imported into the software from the configuration files issued for the DASY components. In the direct measuring mode of the multimeter option, the parameters of the actual system setup are used. In the scan visualization and export modes, the parameters stored in the corresponding document files are used.

The first step of the evaluation is a linearization of the filtered input signal to account for the compression characteristics of the detector diode. The compensation depends on the input signal, the diode type and the DC-transmission factor from the diode to the evaluation electronics. If the exciting field is pulsed, the crest factor of the signal must be known to correctly compensate for peak power. The formula for each channel can be given as :

$$V_i = U_i + U_i^2 \cdot \frac{cf}{dcp_i}$$

- With V_i = compensated signal of channel i (i = x, y, z)
 U_i = input signal of channel i (i = x, y, z)
 cf = crest factor of exciting field (DASY parameter)
 dcp_i = diode compression point (DASY parameter)

From the compensated input signals the primary field data for each channel can be evaluated :

$$E\text{-field probes : } E_i = \sqrt{\frac{V_i}{Norm_i \cdot ConvF}}$$

$$H_i = \sqrt{V_i} \cdot \frac{a_{i0} + a_{i1}f + a_{i2}f^2}{f}$$

H-field probes :

with V_i = compensated signal of channel i (i = x, y, z)
 $Norm_i$ = sensor sensitivity of channel i (i = x, y, z)
 $\mu V/(V/m)^2$ for *E-field Probes*
 $ConvF$ = sensitivity enhancement in solution
 a_{ij} = sensor sensitivity factors for H-field probes
 f = carrier frequency [GHz]
 E_i = electric field strength of channel i in V/m
 H_i = magnetic field strength of channel i in A/m

The RSS value of the field components gives the total field strength (Hermitian magnitude) :

$$E_{tot} = \sqrt{E_x^2 + E_y^2 + E_z^2}$$

The primary field data are used to calculate the derived field units.

$$SAR = E_{tot}^2 \cdot \frac{\sigma}{\rho \cdot 1000}$$

with SAR = local specific absorption rate in mW/g
 E_{tot} = total field strength in V/m
 σ = conductivity in [mho/m] or [Siemens/m]
 ρ = equivalent tissue density in g/cm³

* Note : That the density is set to 1, to account for actual head tissue density rather than the density of the tissue simulating liquid.

The power flow density is calculated assuming the excitation field to be a free space field.

$$P_{pwe} = \frac{E_{tot}^2}{3770} \quad \text{or} \quad P_{pwe} = \frac{H_{tot}^2}{37.7}$$

with P_{pwe} = equivalent power density of a plane wave in mW/cm²
 E_{tot} = total electric field strength in V/m
 H_{tot} = total magnetic field strength in A/m

4. Tissue Simulating Liquids

The mixture is calibrated to obtain proper dielectric constant (permittivity) and conductivity of the tissue.

The dielectric parameters of the liquids were verified prior to the SAR evaluation using an 85070C Dielectric Probe Kit and an E5071B Network Analyzer.

IEEE SCC-34/SC-2 in 1528 recommended Tissue Dielectric Parameters

The head tissue dielectric parameters recommended by the IEEE SCC-34/SC-2 in 1528 have been incorporated in the following table. These head parameters are derived from planar layer models simulating the highest expected SAR for the dielectric properties and tissue thickness variations in human head. Other head and body tissue parameters that have not been specified in 1528 are derived from the tissue dielectric parameters computed from the 4-Cole-Cole equation and extrapolated according to the head parameter specified in 1528.

Target Frequency	Head		Body	
(MHz)	ϵ_r	σ (S/m)	ϵ_r	σ (S/m)
150	52.3	0.76	61.9	0.80
300	45.3	0.87	58.2	0.92
450	43.5	0.87	56.7	0.94
835	41.5	0.90	55.2	0.97
900	41.5	0.97	55.0	1.05
915	41.5	0.98	55.0	1.06
1450	40.5	1.20	54.0	1.30
1610	40.3	1.29	53.8	1.40
1800 - 2000	40.0	1.40	53.3	1.52
2450	39.2	1.80	52.7	1.95
3000	38.5	2.40	52.0	2.73
5800	35.3	5.27	48.2	6.00
(ϵ_r = relative permittivity, σ = conductivity and ρ = 1000 kg/m ³)				

Table 3. Tissue dielectric parameters for head and body phantoms

4.1 Ingredients

The following ingredients are used:

- Water: deionized water (pure H₂O), resistivity $\geq 16 \text{ M } \Omega$ -as basis for the liquid
- Sugar: refined white sugar (typically 99.7 % sucrose, available as crystal sugar in food shops)
-to reduce relative permittivity
- Salt: pure NaCl -to increase conductivity
- Cellulose: Hydroxyethyl-cellulose, medium viscosity (75-125 mPa.s, 2% in water, 20 °C), CAS # 54290 -to increase viscosity and to keep sugar in solution.
- Preservative: Preventol D-7 Bayer AG, D-51368 Leverkusen, CAS # 55965-84-9 -to prevent the spread of bacteria and molds
- DGBE: Diethylenglycol-monobutyl ether (DGBE), Fluka Chemie GmbH, CAS # 112-34-5 -to reduce relative permittivity

4.2 Recipes

The following tables give the recipes for tissue simulating liquids to be used in different frequency bands.

Note: The goal dielectric parameters (at 22 °C) must be achieved within a tolerance of $\pm 5\%$ for ϵ and $\pm 5\%$ for σ .

Liquid type	HSL 450 - A	
Ingredient	Weight (g)	Weight (%)
Water	522.94	38.91
Sugar	765.09	56.93
Cellulose	3.39	0.25
Salt	50.94	3.79
Preventol	1.63	0.12
Total amount	1'344.00	100.00
Goal dielectric parameters		
Frequency [MHz]	450	
Relative Permittivity	43.5	
Conductivity [S/m]	0.87	

Liquid type	MSL 450 - B	
Ingredient	Weight (g)	Weight (%)
Water	590.62	46.21
Sugar	654.00	51.17
Cellulose	2.36	0.18
Salt	29.96	2.34
Preventol	1.06	0.08
Total amount	1'278.00	100.00
Goal dielectric parameters		
Frequency [MHz]	450	
Relative Permittivity	56.7	
Conductivity [S/m]	0.94	

4.3 Liquid Depth

The liquid level was during measurement 15cm ± 0.5 cm.

According to KDB865664 ,the depth of tissue-equivalent liquid in a phantom must be ≥ 15.0 cm ± 0.5 cm for SAR measurements ≤ 3 GHz and ≥ 10.0 cm ± 0.5 cm for measurements > 3 GHz.

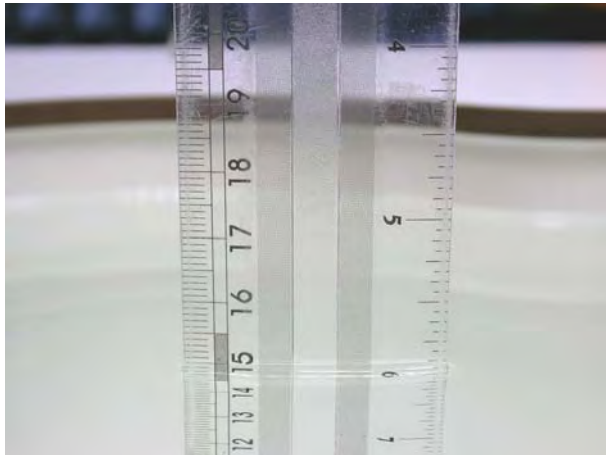


Figure 8. Head-Position



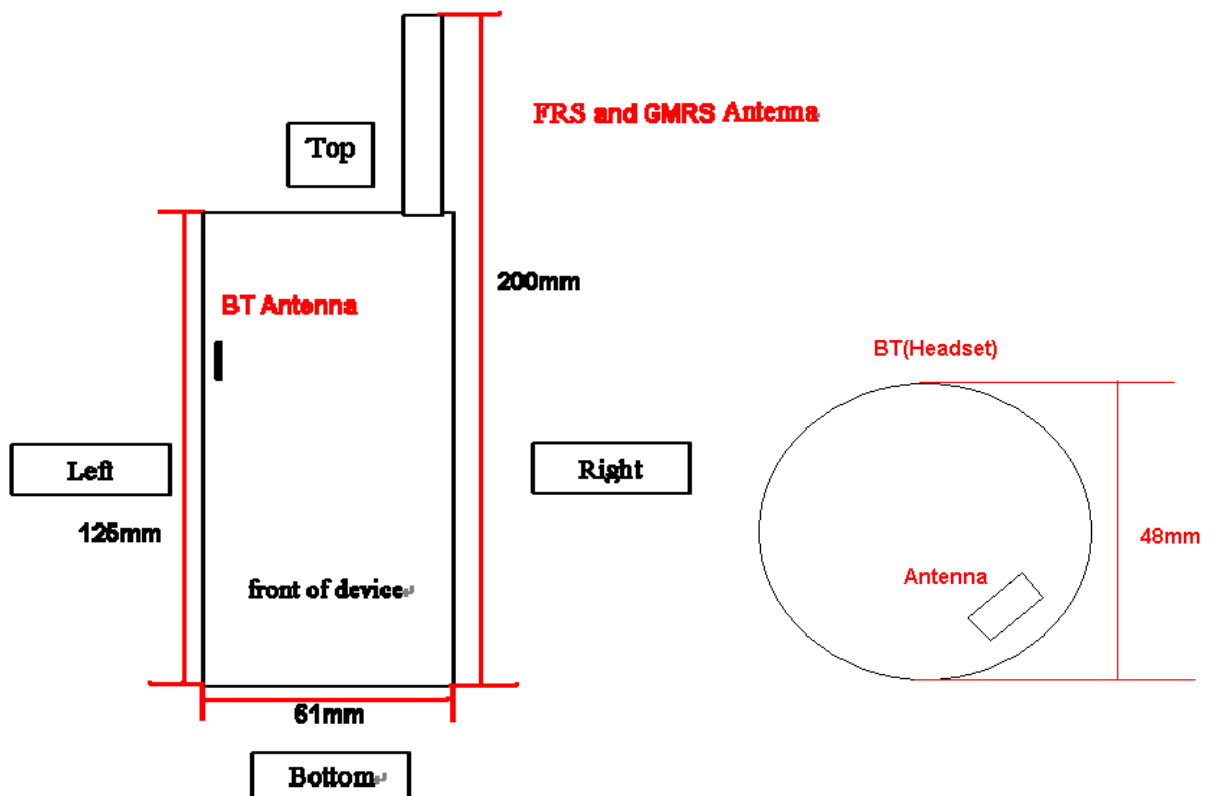
Figure 9. Body-Position

5. SAR Testing with RF Transmitters

5.1 Conducted Power

Usage		Operates with a built-in test mode by client						
EUT Battery		Fully-charged with Ni-MH Battery and Alkaline Battery.						
Frequency Band	Channel	Frequency (MHz)	Before SAR Test Time-Avg. (dBm)	After SAR Test Time-Avg. (dBm)	Duty Cycle	Time-Avg. Tune-up Power (dBm)		
						Min.	Nominal	Max.
GMRS	4	462.6375	31.47	31.46	1	31	31.5	32
FRS	11	467.6375	25.12	25.1		24	25	26
Bluetooth (Walkie Talkie)	0	2402	3.172	3.17		1	3	5
Bluetooth (Headset)	0	2402	3.639	3.637		0	2	4

5.2 Antenna Location



5.3 Stand-alone SAR Evaluate

Transmitter and antenna implementation as below:

Band	FRS and GMRS (Walkie Talkie)	Bluetooth v2.1 (Walkie Talkie)	Bluetooth v2.1 (Headset)
FRS and GMRS (Walkie Talkie)	V	X	X
Bluetooth v2.1	X	V	V

Stand-alone transmission configurations as below:

Band	Side 1	Side 2	Side 3	Side 4	Side 5	Side 6
FRS and GMRS (Walkie Talkie)	V	V	---	---	---	---
Bluetooth v2.1 (Walkie Talkie)	---	---	---	---	---	---
Bluetooth v2.1 (Headset)	---	---	---	---	---	---

Band	Channel	Power (dBm)	Frequency (GHz)	Distance (mm)	Power (mW)	Result	Limit	Exclusion Considerations SAR ¹⁹
Bluetooth v2.1 (Walkie Talkie)	0	5	2.402	10	3	0.5	3	SAR is not required
Bluetooth v2.1 (Headset)	0	4	2.402	5	3	0.9	3	SAR is not required

5.4 Simultaneous Transmitting Evaluate

Simultaneous transmission configurations as below:

Condition	Side	Frequency Band		
		FRS and GMRS (Walkie Talkie)	Bluetooth v2.1 (Walkie Talkie)	Bluetooth v2.1 (Headset)
1	1	V	V	V
2	2	V	V	V

5.4.1 Estimated SAR

Band	Channel	Power-Tune up (dBm)	Frequency (GHz)	Distance (mm)	Power (mW)	Estimated SAR ¹⁹ (mW/g)
Bluetooth v2.1 (Walkie Talkie)	0	5	2.402	10	3	0.1
Bluetooth v2.1 (Headset)	0	4	2.402	5	3	0.1



5.4.2 Sum of 1-g SAR of all simultaneously transmitting

When the sum of 1-g SAR of all simultaneously transmitting antennas in and operating mode and exposure condition combination is within the SAR limit, SAR test exclusion applies to that simultaneous transmission configuration.

Sum of 1-g SAR of summary as below:

Phantom Position		Spacing (mm)	ASSY	Simult Tx 1		Simult Tx 2		Σ SAR ^{1g} (mW/g)	Event
				Band	SAR ^{1g} (mW/g)	Band	SAR ^{1g} (mW/g)		
Flat	Side 1	25	N/A	FRS	0.206	Bluetooth v2.1	0.1	0.306	<1.6
		25	N/A	GMRS	1.34	Bluetooth v2.1	0.1	1.44	<1.6
Flat	Side 2	10	N/A	FRS	0.11	Bluetooth v2.1	0.1	0.21	<1.6
		10	N/A	GMRS	1.365	Bluetooth v2.1	0.1	1.465	<1.6

5.4.3 SAR to peak location separation ratio (SPLSR)

When the sum of SAR is larger than the limit, SAR test exclusion is determined by the SAR to peak location separation ratio. The ratio is determined by $(SAR1 + SAR2)^{1.5/R_i}$, rounded to two decimal digits, and must be ≤ 0.04 for all antenna pairs in the configuration to qualify for 1-g SAR test exclusion.

All of sum of SAR < 1.6 W/Kg, therefore SPLSR is not required.

5.5 SAR test reduction according to KDB

General:

- The test data reported are the worst-case SAR value with the position set in a typical configuration. Test procedures used were according to FCC/OET Bulletin 65, Supplement C [June 2001], IEEE1528-2003 and IEEE Std. 1528a-2005.
- All modes of operation were investigated, and worst-case results are reported.
- Tissue parameters and temperatures are listed on the SAR plots.
- Batteries are fully charged for all readings.
- When the Channel's SAR 1g of maximum conducted power is > 0.8 mW/g, low, middle and high channel are supposed to be tested.

KDB 447498:

- The test data reported are the worst-case SAR value with the position set in a typical configuration. Test procedures used were according to FCC/OET Bulletin 65, Supplement C [June 2001], IEEE1528-2003 and IEEE Std. 1528a-2005.

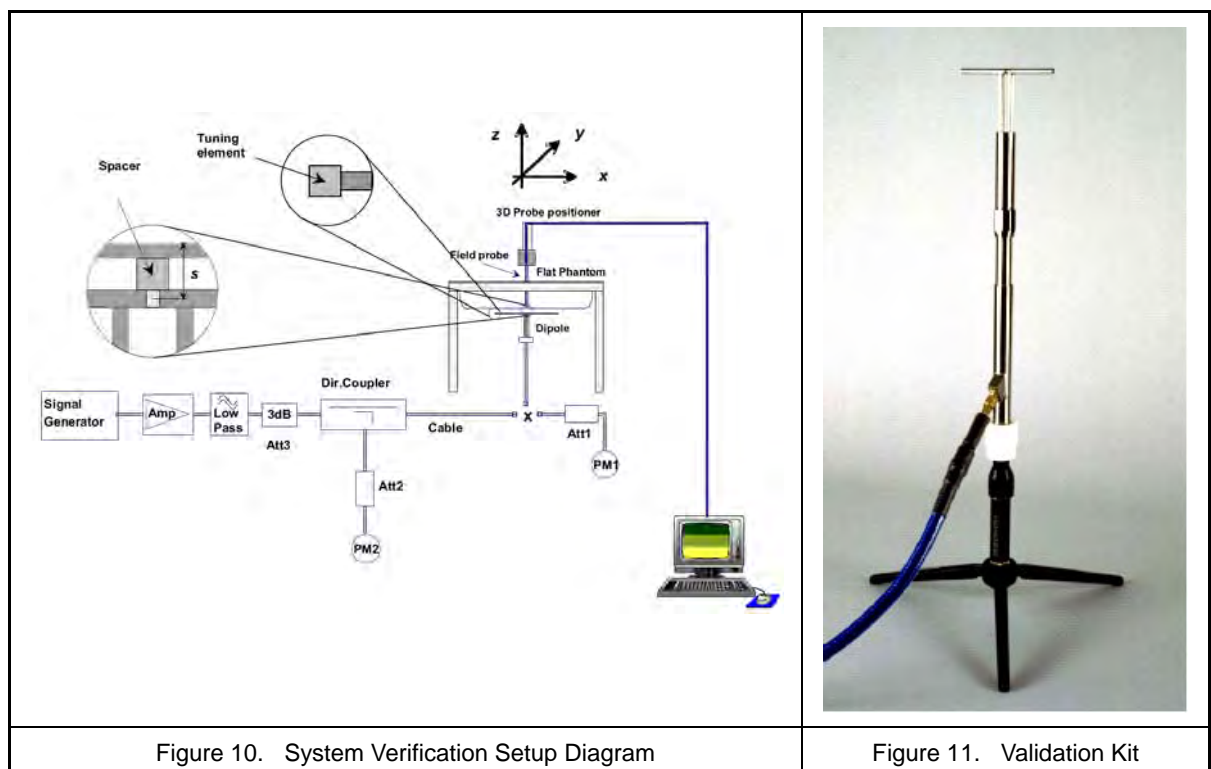
KDB 865664:

- Repeated measurement is not required when the original highest measured SAR is < 0.80 W/kg.
- When the original highest measured SAR is ≥ 0.80 W/kg, repeat that measurement once.
- Perform a second repeated measurement only if the ratio of largest to smallest SAR for the original and first repeated measurements is > 1.20 or when the original or repeated measurement is ≥ 1.45 W/kg.
- Perform a third repeated measurement only if the original, first or second repeated measurement is ≥ 1.5 W/kg and the ratio of largest to smallest SAR for the original, first and second repeated measurements is > 1.20.

6. System Verification and Validation

6.1 Symmetric Dipoles for System Verification

Construction	Symmetrical dipole with 1/4 balun enables measurement of feed point impedance with NWA matched for use near flat phantoms filled with head simulating solutions Includes distance holder and tripod adaptor Calibration Calibrated SAR value for specified position and input power at the flat phantom in head simulating solutions.
Frequency	450 MHz
Return Loss	> 20 dB at specified verification position
Power Capability	> 100 W ($f < 1\text{GHz}$); > 40 W ($f > 1\text{GHz}$)
Options	Dipoles for other frequencies or solutions and other calibration conditions are available upon request
Dimensions	D450V2 : dipole length 270 mm; overall height 330 mm



6.2 Liquid Parameters

Liquid Verify								
Ambient Temperature : 22 ± 2 °C ; Relative Humidity : 40 -70%								
Liquid Type	Frequency	Temp (°C)	Parameters	Target Value	Measured Value	Deviation (%)	Limit (%)	Measured Date
450MHz (Head)	430MHz	22.0	ϵ_r	43.74	44.78	2.38%	± 5	Jun. 03, 2013
			σ	0.870	0.873	0.35%	± 5	
	450MHz	22.0	ϵ_r	43.50	44.38	2.02%	± 5	
			σ	0.870	0.890	2.30%	± 5	
	470MHz	22.0	ϵ_r	43.39	43.92	1.22%	± 5	
			σ	0.871	0.908	4.25%	± 5	
450MHz (Body)	430MHz	22.0	ϵ_r	56.90	54.87	-3.57%	± 5	May 09, 2013
			σ	0.937	0.927	-1.07%	± 5	
	450MHz	22.0	ϵ_r	56.70	54.42	-4.02%	± 5	
			σ	0.940	0.953	1.38%	± 5	
	470MHz	22.0	ϵ_r	56.62	53.99	-4.65%	± 5	
			σ	0.942	0.980	4.03%	± 5	
450MHz (Body)	430MHz	22.0	ϵ_r	56.90	54.87	-3.57%	± 5	Jun. 03, 2013
			σ	0.937	0.927	-1.07%	± 5	
	450MHz	22.0	ϵ_r	56.70	54.42	-4.02%	± 5	
			σ	0.940	0.953	1.38%	± 5	
	470MHz	22.0	ϵ_r	56.62	53.99	-4.65%	± 5	
			σ	0.942	0.980	4.03%	± 5	

Table 4. Measured Tissue dielectric parameters for head and body phantoms



6.3 Verification Summary

Prior to the assessment, the system validation kit was used to test whether the system was operating within its specifications of $\pm 7\%$. The verification was performed at 450MHz.

Mixture Type	Frequency (MHz)	Power	SAR _{1g} (mW/g)	SAR _{10g} (mW/g)	Drift (dB)	Difference percentage		Probe Model / Serial No.	Dipole Model / Serial No.	1W Target		Date
						1g	10g			SAR _{1g} (mW/g)	SAR _{10g} (mW/g)	
Head	450	398 mW	1.22	0.809	-0.03100	-1.6%	-0.4%	EX3DV3 SN: 3519	D450V2 SN:1021	4.96	3.25	Jun. 03, 2013
		Normalize to 1 Watt	4.88	3.24								
Body	450	398 mW	1.15	0.777	0.00348	-3.6%	-1.3%	EX3DV3 SN: 3519	D450V2 SN:1021	4.77	3.15	May 09, 2013
		Normalize to 1 Watt	4.6	3.11								
Body	450	398 mW	1.2	0.8	-0.01100	0.6%	1.6%	EX3DV3 SN: 3519	D450V2 SN:1021	4.77	3.15	Jun. 03, 2013
		Normalize to 1 Watt	4.8	3.2								

6.4 Validation Summary

Per FCC KDB 865664 D02v01, SAR system validation status should be documented to confirm measurement accuracy. The SAR systems (including SAR probes, system components and software versions) used for this device were validated against its performance specifications prior to the SAR measurements. Reference dipoles were used with the required tissue- equivalent media for system validation, according to the procedures outlined in IEEE 1528-2003 and FCC KDB 865664 D01v01. Since SAR probe calibrations are frequency dependent, each probe calibration point was validated at a frequency within the valid frequency range of the probe calibration point, using the system that normally operates with the probe for routine SAR measurements and according to the required tissue-equivalent media.

A tabulated summary of the system validation status including the validation date(s), measurement frequencies, SAR probes and tissue dielectric parameters as below.

Probe Type Model / Serial No.	Prob Cal. Point (MHz)	Head / Body	Cond.	Perm.	CW Validation			Mod. Validation			Date
			ϵ_r	σ	Sensitivity	Probe	Probe	Mod. Type	Duty Factor	PAR	
						Linearity	Isotropy				
EX3DV3 SN: 3519	450	Head	44.38	0.89	Pass	Pass	Pass	FM	Pass	N/A	Jun. 03, 2013
EX3DV3 SN: 3519	450	Body	54.42	0.953	Pass	Pass	Pass	FM	Pass	N/A	May 09, 2013
EX3DV3 SN: 3519	450	Body	54.42	0.953	Pass	Pass	Pass	FM	Pass	N/A	Jun. 03, 2013



7. Test Equipment List

Manufacturer	Name of Equipment	Type/Model	Serial Number	Calibration	
				Last Cal.	Due Date
SPEAG	450MHz System Validation Kit	D450V2	1021	Feb. 19, 2013	Feb. 19, 2014
SPEAG	Dosimetric E-Field Probe	EX3DV3	3519	Feb. 20, 2013	Feb. 20, 2014
SPEAG	Data Acquisition Electronics	DAE4	779	Feb. 13, 2013	Feb. 13, 2014
SPEAG	Device Holder	N/A	N/A	NCR	
SPEAG	Measurement Server	SE UMS 011 AA	1025	NCR	
SPEAG	Phantom	SAM V4.0	TP-1150	NCR	
SPEAG	Robot	Staubli TX90XL	F07/564ZA1/C/01	NCR	
SPEAG	Software	DASY5 V5.0 Build 125	N/A	NCR	
SPEAG	Software	SEMCAD V13.4 Build 125	N/A	NCR	
Agilent	Dielectric Probe Kit	85070C	US99360094	NCR	
Agilent	ENA Series Network Analyzer	E5071B	MY42404655	Apr. 05, 2012	Apr. 05, 2014
R&S	Power Sensor	NRP-Z22	100179	May 21, 2013	May 21, 2014
Agilent	MXG Vector Signal Generator	N5182A	MY47420962	May 14, 2013	May 14, 2015
Agilent	Dual Directional Coupler	778D	50334	NCR	
Mini-Circuits	Power Amplifier	ZHL-42W-SMA	D111103#5	NCR	
Mini-Circuits	Power Amplifier	ZVE-8G-SMA	D042005 671800514	NCR	
Aisi	Attenuator	IEAT 3dB	N/A	NCR	

Table 5. Test Equipment List



8. Measurement Uncertainty

Measurement uncertainties in SAR measurements are difficult to quantify due to several variables including biological, physiological, and environmental. However, we estimate the measurement uncertainties in SAR to be less than $\pm 19.62\%$ [8]. The frequency range of the measurement uncertainty is 300 ~ 5800MHz $\pm 10.1\%$

According to Std. C95.3 [9], the overall uncertainties are difficult to assess and will vary with the type of meter and usage situation. However, accuracy's of ± 1 to 3 dB can be expected in practice, with greater uncertainties in near-field situations and at higher frequencies (shorter wavelengths), or areas where large reflecting objects are present. Under optimum measurement conditions, SAR measurement uncertainties of at least ± 2 dB can be expected.

According to CENELEC [10], typical worst-case uncertainty of field measurements is ± 5 dB. For well-defined modulation characteristics the uncertainty can be reduced to ± 3 dB.

Item	Uncertainty Component	Uncertainty Value	Prob. Dist	Div.	c_i (1g)	c_i (10g)	Std. Unc. (1-g)	Std. Unc. (10-g)	V_i or V_{eff}
Measurement System									
u1	Probe Calibration ($k=1$)	$\pm 5.05\%$	Normal	1	1	1	$\pm 5.05\%$	$\pm 5.05\%$	∞
u2	Probe Isotropy	$\pm 7.6\%$	Rectangular	$\sqrt{3}$	0.7	0.7	$\pm 3.1\%$	$\pm 3.1\%$	∞
u3	Boundary Effect	$\pm 1.0\%$	Rectangular	$\sqrt{3}$	1	1	$\pm 0.6\%$	$\pm 0.6\%$	∞
u4	Linearity	$\pm 4.7\%$	Rectangular	$\sqrt{3}$	1	1	$\pm 2.7\%$	$\pm 2.7\%$	∞
u5	System Detection Limit	$\pm 1.0\%$	Rectangular	$\sqrt{3}$	1	1	$\pm 0.58\%$	$\pm 0.58\%$	∞
u6	Readout Electronics	$\pm 0.3\%$	Normal	1	1	1	$\pm 0.3\%$	$\pm 0.3\%$	∞
u7	Response Time	$\pm 0.8\%$	Rectangular	$\sqrt{3}$	1	1	$\pm 0.5\%$	$\pm 0.5\%$	∞
u8	Integration Time	$\pm 2.6\%$	Rectangular	$\sqrt{3}$	1	1	$\pm 1.5\%$	$\pm 1.5\%$	∞
u9	RF Ambient Conditions	$\pm 0\%$	Rectangular	$\sqrt{3}$	1	1	$\pm 0\%$	$\pm 0\%$	∞
u10	RF Ambient Reflections	$\pm 0\%$	Rectangular	$\sqrt{3}$	1	1	$\pm 0\%$	$\pm 0\%$	∞
u11	Probe Positioner Mechanical Tolerance	$\pm 0.4\%$	Rectangular	$\sqrt{3}$	1	1	$\pm 0.2\%$	$\pm 0.2\%$	∞
u12	Probe Positioning with respect to Phantom Shell	$\pm 2.9\%$	Rectangular	$\sqrt{3}$	1	1	$\pm 1.7\%$	$\pm 1.7\%$	∞
u13	Extrapolation, interpolation and integration Algorithms for Max. SAR Evaluation	$\pm 1.0\%$	Rectangular	$\sqrt{3}$	1	1	$\pm 0.6\%$	$\pm 0.6\%$	∞
Test sample Related									
u14	Test sample Positioning	$\pm 3.6\%$	Normal	1	1	1	$\pm 3.6\%$	$\pm 3.6\%$	89
u15	Device Holder Uncertainty	$\pm 3.5\%$	Normal	1	1	1	$\pm 3.5\%$	$\pm 3.5\%$	5
u16	Output Power Variation - SAR drift measurement	$\pm 5.0\%$	Rectangular	$\sqrt{3}$	1	1	$\pm 2.9\%$	$\pm 2.9\%$	∞
Phantom and Tissue Parameters									
u17	Phantom Uncertainty (shape and thickness tolerances)	$\pm 4.0\%$	Rectangular	$\sqrt{3}$	1	1	$\pm 2.3\%$	$\pm 2.3\%$	∞
u18	Liquid Conductivity - deviation from target values	$\pm 5.0\%$	Rectangular	$\sqrt{3}$	0.64	0.43	$\pm 1.8\%$	$\pm 1.2\%$	∞
u19	Liquid Conductivity - measurement uncertainty	$\pm 1.93\%$	Normal	1	0.64	0.43	$\pm 1.24\%$	$\pm 0.83\%$	69
u20	Liquid Permittivity - deviation from target values	$\pm 5.0\%$	Rectangular	$\sqrt{3}$	0.6	0.49	$\pm 1.7\%$	$\pm 1.4\%$	∞
u21	Liquid Permittivity - measurement uncertainty	$\pm 1.4\%$	Normal	1	0.6	0.49	$\pm 0.84\%$	$\pm 1.69\%$	69
Combined standard uncertainty			RSS				$\pm 9.81\%$	$\pm 9.62\%$	313
Expanded uncertainty (95% CONFIDENCE LEVEL)			$k=2$				$\pm 19.62\%$	$\pm 19.24\%$	

Table 6. Uncertainty Budget of DASY

9. **Measurement Procedure**

The measurement procedures are as follows:

1. For WLAN function, engineering testing software installed on Notebook can provide continuous transmitting signal.
2. Measure output power through RF cable and power meter
3. Set scan area, grid size and other setting on the DASY software
4. Find out the largest SAR result on these testing positions of each band
5. Measure SAR results for other channels in worst SAR testing position if the SAR of highest power channel is larger than 0.8 W/kg

According to the test standard, the recommended procedure for assessing the peak spatial-average SAR value consists of the following steps:

1. Power reference measurement
2. Area scan
3. Zoom scan
4. Power drift measurement

9.1 **Spatial Peak SAR Evaluation**

The procedure for spatial peak SAR evaluation has been implemented according to the test standard. It can be conducted for 1g and 10g, as well as for user-specific masses. The DASY software includes all numerical procedures necessary to evaluate the spatial peak SAR value.

The base for the evaluation is a "cube" measurement. The measured volume must include the 1g and 10g cubes with the highest averaged SAR values. For that purpose, the center of the measured volume is aligned to the interpolated peak SAR value of a previously performed area scan.

The entire evaluation of the spatial peak values is performed within the post-processing engine (SEMCAD). The system always gives the maximum values for the 1g and 10g cubes. The algorithm to find the cube with highest averaged SAR is divided into the following stages

1. Extraction of the measured data (grid and values) from the Zoom Scan
2. Calculation of the SAR value at every measurement point based on all stored data (A/D values and measurement parameters)
3. Generation of a high-resolution mesh within the measured volume
4. Interpolation of all measured values from the measurement grid to the high-resolution grid
5. Extrapolation of the entire 3-D field distribution to the phantom surface over the distance from sensor to surface
6. Calculation of the averaged SAR within masses of 1g and 10g



9.2 Area & Zoom Scan Procedures

First Area Scan is used to locate the approximate location(s) of the local peak SAR value(s). The measurement grid within an Area Scan is defined by the grid extent, grid step size and grid offset. Next, in order to determine the EM field distribution in a three-dimensional spatial extension, Zoom Scan is required. The Zoom Scan measures points and step size follow as below. The Zoom Scan is performed around the highest E-field value to determine the averaged SAR-distribution over 10 g.

Grid Type	Frequency		Step size (mm)			X*Y*Z (Point)	Cube size			Step size		
			X	Y	Z		X	Y	Z	X	Y	Z
uniform grid	$\leq 3\text{GHz}$	$\leq 2\text{GHz}$	≤ 8	≤ 8	≤ 5	5*5*7	32	32	30	8	8	5
		2G - 3G	≤ 5	≤ 5	≤ 5	7*7*7	30	30	30	5	5	5
	3 - 6GHz	3 - 4GHz	≤ 5	≤ 5	≤ 4	7*7*8	30	30	28	5	5	4
		4 - 5GHz	≤ 4	≤ 4	≤ 3	8*8*10	28	28	27	4	4	3
		5 - 6GHz	≤ 4	≤ 4	≤ 2	8*8*12	28	28	22	4	4	2

(Our measure settings are refer KDB Publication 865664 D01v01)

9.3 Volume Scan Procedures

The volume scan is used for assess overlapping SAR distributions for antennas transmitting in different frequency bands. It is equivalent to an oversized zoom scan used in standalone measurements. The measurement volume will be used to enclose all the simultaneous transmitting antennas. For antennas transmitting simultaneously in different frequency bands, the volume scan is measured separately in each frequency band. In order to sum correctly to compute the 1g aggregate SAR, the DUT remain in the same test position for all measurements and all volume scan use the same spatial resolution and grid spacing. When all volume scan were completed, the software, SEMCAD postprocessor can combine and subsequently superpose these measurement data to calculating the multiband SAR.

9.4 SAR Averaged Methods

In DASY, the interpolation and extrapolation are both based on the modified Quadratic Shepard's method. The interpolation scheme combines a least-square fitted function method and a weighted average method which are the two basic types of computational interpolation and approximation. Extrapolation routines are used to obtain SAR values between the lowest measurement points and the inner phantom surface. The extrapolation distance is determined by the surface detection distance and the probe sensor offset. The uncertainty increases with the extrapolation distance. To keep the uncertainty within 1% for the 1 g and 10 g cubes, the extrapolation distance should not be larger than 5 mm.

9.5 Power Drift Monitoring

All SAR testing is under the DUT install full charged battery and transmit maximum output power. In DASY measurement software, the power reference measurement and power drift measurement procedures are used for monitoring the power drift of DUT during SAR test. Both these procedures measure the field at a specified reference position before and after the SAR testing. The software will calculate the field difference in dB. If the power drift more than 5%, the SAR will be retested.

10. SAR Test Results Summary

10.1 Brain Measurement SAR

Index.	Position	Band	Ch.	Side to Phantom	Spacing (mm)	Battery	ASSY.	SAR _{1g} (mW/g)	Power Drift	Burst Avg Power	Max tune-up	Reported SAR _{1g} (mW/g)
#4	Flat	FRS	11	1	25	Ni-MH	N/A	0.096	0.193000	25.12	26	0.12
#1	Flat	FRS	11	1	25	Alkaline	N/A	0.203	-0.049000	25.12	26	0.25
#10	Flat	GMRS	4	1	25	Ni-MH	N/A	0.097	-0.033000	31.47	32	0.11
#7	Flat	GMRS	4	1	25	Alkaline	N/A	0.184	-0.059000	31.47	32	0.21

- Note: 1. According KDB 447498 D01 V05 section 4.1.4, the “Reported” explanation as below:
 “When SAR or MPE is measured at or scaled to the maximum tune-up tolerance limit, the results are referred to as reported.”
- If actual power less than tune-up power that Scaling SAR is required.
 - The formula of Reported SAR, that represent as below:

$$\text{Reported SAR} = \text{Original SAR} * 10^{[(\text{Tune-up power} - \text{Actual power})/10]}$$
 - The original highest measured SAR is ≥ 0.80 W/kg, repeat that measurement once.
 - Perform a second repeated measurement the ratio of largest to smallest SAR for the original and first repeated measurements is < 1.2 , the original or repeated measurement is ≥ 1.45 W/kg (~ 10% from the 1-g SAR limit).
 - Perform a third repeated measurement the original, first and second repeated measurement is ≥ 1.5 W/kg
 - The combinations of belt clip and battery tested on back surface on FRS and GMRS.

◆ SAR values are scaled for the power drift

Band	Ch.	Battery	ASSY.	SAR _{1g} [mW/g]		power drift (dB)	+ power drift 10^(dB/10)	SAR _{1g} [mW/g] (include +power drift)		Remark
				Duty Cycle				Duty Cycle		
				100%	50%			100%	50%	
FRS	11	Ni-MH	N/A	0.120	0.0600	0.193000	1.045	0.125	0.063	---
	11	Alkaline	N/A	0.250	0.1250	-0.049000	1.011	0.253	0.126	---
GMRS	4	Ni-MH	N/A	0.110	0.0550	-0.033000	1.008	0.111	0.055	---
	4	Alkaline	N/A	0.210	0.1050	-0.059000	1.014	0.213	0.106	---

SAR is basically proportional to average transmit power and duty cycle

(i.e. $\text{SAR} = P \times T$ where P is the average transmit power and T is the transmit duty cycle).

$\text{SAR}(\text{unknown}) = \text{SAR}(\text{known}) \times (P_{\text{Tx}}/P(\text{known})) T(\text{known})$

Where P_{x} is the unknown power (i.e. the power at the highest drift)

T_{x} is the transmit duty cycle used at that unknown power.

If transmitter duty cycle is the same then it should be a relationship of $P_{\text{x}}/P_{\text{known}}$



10.2 Muscle SAR Measurement SAR

Index.	Position	Band	Ch.	Side to Phantom	Spacing (mm)	Battery	ASSY.	SAR _{1g} (mW/g)	Power Drift	Burst Avg Power	Max tune-up	Reported SAR _{1g} (mW/g)
#5	Flat	FRS	11	2	10	Ni-MH	Flexible Ear Receiver	0.179	-0.001980	25.12	26	0.22
#2	Flat	FRS	11	2	10	Alkaline	Flexible Ear Receiver	0.331	-0.019000	25.12	26	0.41
#6	Flat	FRS	11	2	0	Ni-MH	Flexible Ear Receiver + belt clip	0.117	0.002410	25.12	26	0.14
#3	Flat	FRS	11	2	0	Alkaline	Flexible Ear Receiver + belt clip	0.233	-0.043000	25.12	26	0.29
#11	Flat	GMRS	4	2	10	Ni-MH	Flexible Ear Receiver	2.420	-0.008510	31.47	32	2.73
#8	Flat	GMRS	4	2	10	Alkaline	Flexible Ear Receiver	2.370	-0.000792	31.47	32	2.68
#12	Flat	GMRS	4	2	0	Ni-MH	Flexible Ear Receiver + belt clip	2.100	-0.011000	31.47	32	2.37
#9	Flat	GMRS	4	2	0	Alkaline	Flexible Ear Receiver + belt clip	1.770	-0.019000	31.47	32	2

- Note: 1. According KDB 447498 D01 V05 section 4.1.4, the "Reported" explanation as below:
 "When SAR or MPE is measured at or scaled to the maximum tune-up tolerance limit, the results are referred to as reported."
2. If actual power less than tune-up power that Scaling SAR is required.
 3. The formula of Reported SAR, that represent as below:

$$\text{Reported SAR} = \text{Original SAR} * 10^{[(\text{Tune-up power} - \text{Actual power})/10]}$$
 4. The original highest measured SAR is ≥ 0.80 W/kg, repeat that measurement once.
 5. Perform a second repeated measurement the ratio of largest to smallest SAR for the original and first repeated measurements is < 1.2 , the original or repeated measurement is ≥ 1.45 W/kg (~ 10% from the 1-g SAR limit).
 6. Perform a third repeated measurement the original, first and second repeated measurement is ≥ 1.5 W/kg
 7. The combinations of belt clip and battery tested on back surface on FRS and GMRS.

◆ SAR values are scaled for the power drift

Band	Ch.	Battery	ASSY.	SAR _{1g} [mW/g]		power drift (dB)	+ power drift 10^(dB/10)	SAR _{1g} [mW/g] (include +power drift)		Remark
				Duty Cycle				Duty Cycle		
				100%	50%			100%	50%	
FRS	11	Ni-MH	Flexible Ear Receiver	0.220	0.1100	-0.001980	1.000	0.220	0.110	---
	11	Alkaline	Flexible Ear Receiver	0.410	0.2050	-0.019000	1.004	0.412	0.206	---
	11	Ni-MH	Flexible Ear Receiver + belt clip	0.140	0.0700	0.002410	1.001	0.140	0.070	---
	11	Alkaline	Flexible Ear Receiver + belt clip	0.290	0.1450	-0.043000	1.010	0.293	0.146	---
GMRS	4	Ni-MH	Flexible Ear Receiver	2.730	1.3650	-0.008510	1.002	2.735	1.368	---
	4	Alkaline	Flexible Ear Receiver	2.680	1.3400	-0.000792	1.000	2.680	1.340	---
	4	Ni-MH	Flexible Ear Receiver + belt clip	2.370	1.1850	-0.011000	1.003	2.376	1.188	---
	4	Alkaline	Flexible Ear Receiver + belt clip	2.000	1.0000	-0.019000	1.004	2.009	1.004	---

SAR is basically proportional to average transmit power and duty cycle

(i.e. $SAR = P \times T$ where P is the average transmit power and T is the transmit duty cycle).

$SAR(\text{unknown}) = SAR(\text{know}) \times (P_x T_x / P(\text{known}) T(\text{known}))$

Where P_x is the unknown power (i.e. the power at the highest drift)

T_x is the transmit duty cycle used at that unknown power.

If transmitter duty cycle is the same then it should be a relationship of $P_x / P(\text{known})$



10.3 Hot-spot mode Measurement SAR

Hot-spot SAR is not available.

10.4 Extremity Measurement SAR

Evaluated extremity SAR is not available.

10.5 SAR Measurement Variability

Detailed evaluations please refer KDB 865664 on "SAR test reduction according to KDB" section.

Index.	Position	Band	Ch.	Side to Phantom	Spacing (mm)	Battery	ASSY.	SAR _{1g} (mW/g)	Power Drift	Burst Avg Power	Max Repeated measurement Ratio
#13	Flat	GMRS	4	2	0	Ni-MH	Flexible Ear Receiver + belt clip	2.370	-0.003410	33.18	1.02<1.2
#14	Flat	GMRS	4	2	0	Ni-MH	Flexible Ear Receiver + belt clip	2.400	0.005920	33.18	
#15	Flat	GMRS	4	2	0	Ni-MH	Flexible Ear Receiver + belt clip	2.380	0.012000	33.18	

- Note: 1. According KDB 447498 D01 V05 section 4.1.4, the "Reported" explanation as below:
 "When SAR or MPE is measured at or scaled to the maximum tune-up tolerance limit, the results are referred to as reported."
 2. If actual power less than tune-up power that Scaling SAR is required.
 3. The formula of Reported SAR, that represent as below:

$$\text{Reported SAR} = \text{Original SAR} * 10^{[(\text{Tune-up power} - \text{Actual power})/10]}$$

10.6 Std. C95.1-1999 RF Exposure Limit

Human Exposure	Population Uncontrolled Exposure (W/kg) or (mW/g)	Occupational Controlled Exposure (W/kg) or (mW/g)
Spatial Peak SAR* (head)	1.60	8.00
Spatial Peak SAR** (Whole Body)	0.08	0.40
Spatial Peak SAR*** (Partial-Body)	1.60	8.00
Spatial Peak SAR**** (Hands / Feet / Ankle / Wrist)	4.00	20.00

Table 7. Safety Limits for Partial Body Exposure

Notes :

- * The Spatial Peak value of the SAR averaged over any 1 gram of tissue.
(defined as a tissue volume in the shape of a cube) and over the appropriate averaging time.
- ** The Spatial Average value of the SAR averaged over the whole – body.
- *** The Spatial Average value of the SAR averaged over the partial – body.
- **** The Spatial Peak value of the SAR averaged over any 10 grams of tissue.
(defined as a tissue volume in the shape of a cube) and over the appropriate averaging time.

Population / Uncontrolled Environments : are defined as locations where there is the exposure of individuals who have no knowledge or control of their exposure.

Occupational / Controlled Environments : are defined as locations where there is exposure that may be incurred by persons who are aware of the potential for exposure, (i.e. as a result of employment or occupation).

11. Conclusion

The SAR test values found for the portable mobile phone **Giant Telecom Ltd. Trade Name : Motorola Model(s) : MU560CR, MU350R, MU351R** is below the maximum recommended level of 1.6 W/kg (mW/g).

12. References

- [1] Std. C95.1-1999, "American National Standard safety levels with respect to human exposure to radio frequency electromagnetic fields, 300KHz to 100GHz", New York.
- [2] NCRP, National Council on Radiation Protection and Measurements, "Biological Effects and Exposure Criteria for Radio frequency Electromagnetic Fields", NCRP report NO. 86, 1986.
- [3] T. Schmid, O. Egger, and N. Kuster, "Automatic E-field scanning system for dosimetric assessments", IEEE Transactions on Microwave Theory and Techniques, vol. 44, pp, 105-113, Jan. 1996.
- [4] K. Pokovi^c, T. Schmid, and N. Kuster, "Robust setup for precise calibration of E-field probes in tissue simulating liquids at mobile communications frequency", in ICECOM'97, Dubrovnik, October 15-17, 1997, pp.120-124.
- [5] K. Pokovi^c, T. Schmid, and N. Kuster, "E-field probe with improved isotropy in brain simulating liquids", in Proceedings of the ELMAR, Zadar, Croatia, 23-25 June, 1996, pp.172-175.
- [6] N. Kuster, and Q. Balzano, "Energy absorption mechanism by biological bodies in the near field of dipole antennas above 300MHz", IEEE Transaction on Vehicular Technology, vol. 41, no. 1, Feb. 1992, pp. 17-23.
- [7] Robert J. Renka, "Multivariate Interpolation Of Large Sets Of Scattered Data", University of North Texas ACM Transactions on Mathematical Software, vol. 14, no. 2, June 1988 , pp. 139-148.
- [8] N. Kuster, R. Kastle, T. Schmid, Dosimetric evaluation of mobile communications equipment with known precision, IEEE Transaction on Communications, vol. E80-B, no. 5, May 1997, pp. 645-652.
- [9] Std. C95.3-1991, "IEEE Recommended Practice for the Measurement of Potentially Hazardous Electromagnetic Fields – RF and Microwave, New York: IEEE, Aug. 1992.
- [10] CENELEC CLC/SC111B, European Prestandard (prENV 50166-2), Human Exposure to Electromagnetic Fields High-frequency: 10KHz-300GHz, Jan. 1995.
- [11] IEEE Std 1528™-2003 - IEEE Recommended Practice for Determining the Peak Spatial-Average Specific Absorption Rate (SAR) in the Human Head From Wireless Communications Devices: Measurement Techniques
- [12] IEEE Std 1528a™-2005 (Amendment to IEEE Std 1528™-2003), IEEE Recommended Practice for Determining the Peak Spatial-Average Specific Absorption Rate (SAR) in the Human Head from Wireless Communications Devices: Measurement Techniques

13. SAR Measurement Guidance

- [1] KDB 865664 D01 SAR measurement 100 MHz to 6 GHz v01
- [2] KDB 447498 D01 General RF Exposure Guidance v05



Appendix A - System Performance Check

Test Laboratory: A Test Lab Techno Corp.

Date/Time: 6/3/2013 10:31:36 AM

System Performance Check at 450MHz_20130603_Head

DUT: Dipole 450MHz; Type: D450V2; Serial: D450V2 SN:1021

Communication System: CW; Frequency: 450 MHz; Duty Cycle: 1:1

Medium parameters used: $f = 450$ MHz; $\sigma = 0.89$ mho/m; $\epsilon_r = 44.4$; $\rho = 1000$ kg/m³

Phantom section: Flat Section

Measurement Standard: DASYS (IEEE/IEC)

DASY5 Configuration:

- Area Scan setting - Find Secondary Maximum Within: 2.0dB and with a peak SAR value greater than 0.5 W/Kg
- Probe: EX3DV3 - SN3519; ConvF(10.8, 10.8, 10.8); Calibrated: 2/20/2013
- Sensor-Surface: 2mm (Mechanical Surface Detection)
- Electronics: DAE4 Sn779; Calibrated: 2/13/2013
- Phantom: SAM with CRP; Type: SAM; Serial: TP-1150 and higher
- Measurement SW: DASYS, V5.0 Build 125; SEMCAD X Version 13.4 Build 125

System Performance Check at 450MHz/Area Scan (61x201x1):

Measurement grid: $dx=15$ mm, $dy=15$ mm

Maximum value of SAR (interpolated) = 1.56 W/kg

System Performance Check at 450MHz/Zoom Scan (7x7x7)/Cube 0:

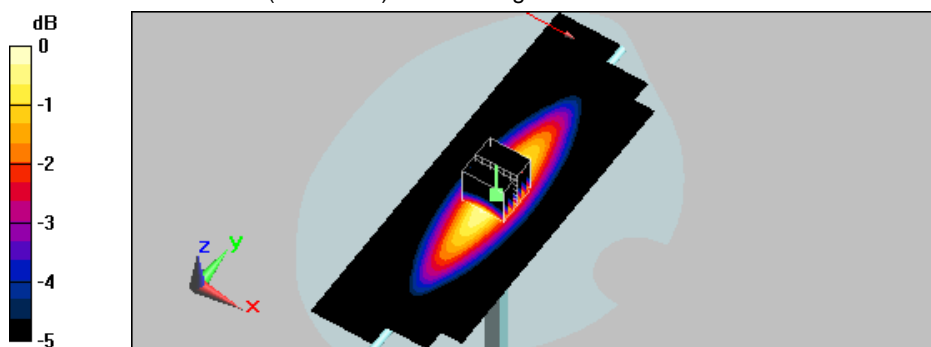
Measurement grid: $dx=5$ mm, $dy=5$ mm, $dz=5$ mm

Reference Value = 42.6 V/m; Power Drift = -0.031 dB

Peak SAR (extrapolated) = 1.86 W/kg

SAR(1 g) = 1.22 W/kg; SAR(10 g) = 0.809 W/kg

Maximum value of SAR (measured) = 1.55 W/kg



0 dB = 1.55W/kg

Test Laboratory: A Test Lab Techno Corp.

Date/Time: 5/9/2013 6:43:50 PM

System Performance Check at 450MHz_20130509_Body

DUT: Dipole 450MHz; Type: D450V2; Serial: D450V2 SN:1021

Communication System: CW; Frequency: 450 MHz; Duty Cycle: 1:1

Medium parameters used: $f = 450 \text{ MHz}$; $\sigma = 0.953 \text{ mho/m}$; $\epsilon_r = 54.4$; $\rho = 1000 \text{ kg/m}^3$

Phantom section: Flat Section

Measurement Standard: DASYS (IEEE/IEC)

DASY5 Configuration:

- Area Scan setting - Find Secondary Maximum Within: 2.0dB and with a peak SAR value greater than 0.5 W/Kg
- Probe: EX3DV3 - SN3519; ConvF(11.79, 11.79, 11.79); Calibrated: 2/20/2013
- Sensor-Surface: 2mm (Mechanical Surface Detection)
- Electronics: DAE4 Sn779; Calibrated: 2/13/2013
- Phantom: SAM with CRP; Type: SAM; Serial: TP-1150 and higher
- Measurement SW: DASYS, V5.0 Build 125; SEMCAD X Version 13.4 Build 125

System Performance Check at 450MHz/Area Scan (61x201x1):

Measurement grid: $dx=15\text{mm}$, $dy=15\text{mm}$

Maximum value of SAR (interpolated) = 1.36 W/kg

System Performance Check at 450MHz/Zoom Scan (7x7x7)/Cube 0:

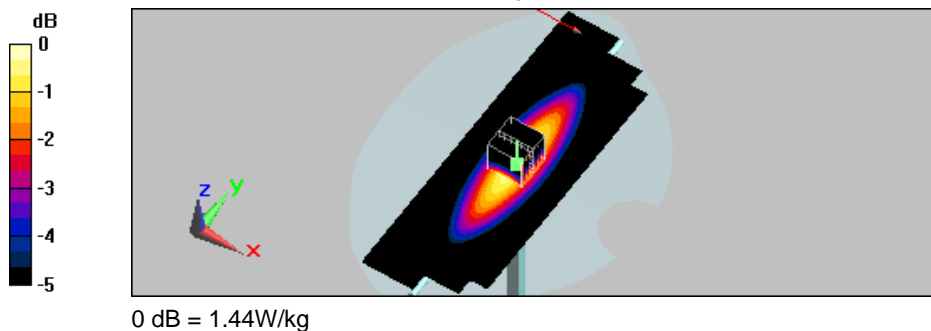
Measurement grid: $dx=5\text{mm}$, $dy=5\text{mm}$, $dz=5\text{mm}$

Reference Value = 38.1 V/m; Power Drift = 0.00348 dB

Peak SAR (extrapolated) = 1.75 W/kg

SAR(1 g) = 1.15 W/kg; SAR(10 g) = 0.777 W/kg

Maximum value of SAR (measured) = 1.44 W/kg





Test Laboratory: A Test Lab Techno Corp.

Date/Time: 6/3/2013 3:08:57 PM

System Performance Check at 450MHz_20130603_Body

DUT: Dipole 450MHz; Type: D450V2; Serial: D450V2 SN:1021

Communication System: CW; Frequency: 450 MHz; Duty Cycle: 1:1

Medium parameters used: $f = 450 \text{ MHz}$; $\sigma = 0.953 \text{ mho/m}$; $\epsilon_r = 54.4$; $\rho = 1000 \text{ kg/m}^3$

Phantom section: Flat Section

Measurement Standard: DASYS (IEEE/IEC)

DASY5 Configuration:

- Area Scan setting - Find Secondary Maximum Within: 2.0dB and with a peak SAR value greater than 0.5 W/Kg
- Probe: EX3DV3 - SN3519; ConvF(11.79, 11.79, 11.79); Calibrated: 2/20/2013
- Sensor-Surface: 2mm (Mechanical Surface Detection)
- Electronics: DAE4 Sn779; Calibrated: 2/13/2013
- Phantom: SAM with CRP; Type: SAM; Serial: TP-1150 and higher
- Measurement SW: DASYS, V5.0 Build 125; SEMCAD X Version 13.4 Build 125

System Performance Check at 450MHz/Area Scan (61x201x1):

Measurement grid: $dx=15\text{mm}$, $dy=15\text{mm}$

Maximum value of SAR (interpolated) = 1.52 W/kg

System Performance Check at 450MHz/Zoom Scan (7x7x7)/Cube 0:

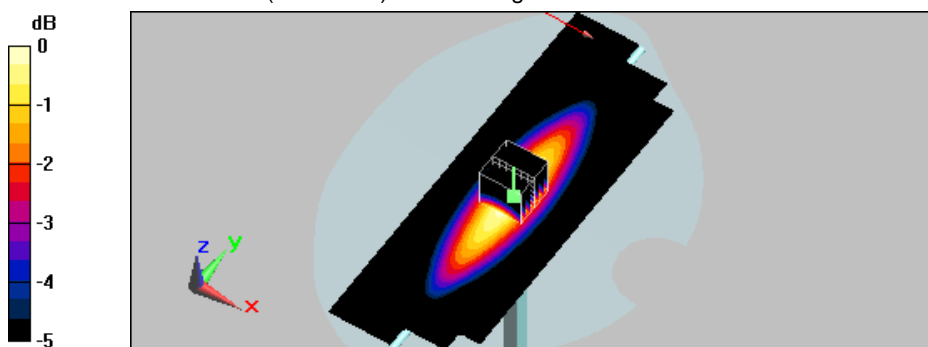
Measurement grid: $dx=5\text{mm}$, $dy=5\text{mm}$, $dz=5\text{mm}$

Reference Value = 40.4 V/m; Power Drift = -0.011 dB

Peak SAR (extrapolated) = 1.86 W/kg

SAR(1 g) = 1.2 W/kg; SAR(10 g) = 0.800 W/kg

Maximum value of SAR (measured) = 1.53 W/kg



0 dB = 1.53W/kg



Appendix B - SAR Measurement Data

Test Laboratory: A Test Lab Techno Corp.

Date/Time: 6/3/2013 11:25:36 AM

#4_Flat_FRS CH11_Brain_Front surface to phantom 25mm_Ni-MH

DUT: MU350R; Type: Walkie Talkie; FCC ID: RAQMUEFJ

Communication System: FRS; Frequency: 467.63 MHz; Duty Cycle: 1:1

Medium parameters used: $f = 468$ MHz; $\sigma = 0.907$ mho/m; $\epsilon_r = 44$; $\rho = 1000$ kg/m³

Phantom section: Flat Section

Measurement Standard: DASYS (IEEE/IEC)

DASY5 Configuration:

- Area Scan setting - Find Secondary Maximum Within: 2.0dB and with a peak SAR value greater than 0.5 W/Kg
- Probe: EX3DV3 - SN3519; ConvF(10.8, 10.8, 10.8); Calibrated: 2/20/2013
- Sensor-Surface: 2mm (Mechanical Surface Detection)
- Electronics: DAE4 Sn779; Calibrated: 2/13/2013
- Phantom: SAM with CRP; Type: SAM; Serial: TP-1150 and higher
- Measurement SW: DASYS, V5.0 Build 125; SEMCAD X Version 13.4 Build 125

Flat/Area Scan (71x151x1):

Measurement grid: $dx=15$ mm, $dy=15$ mm

Maximum value of SAR (interpolated) = 0.172 W/Kg

Flat/Zoom Scan (5x5x7)/Cube 0:

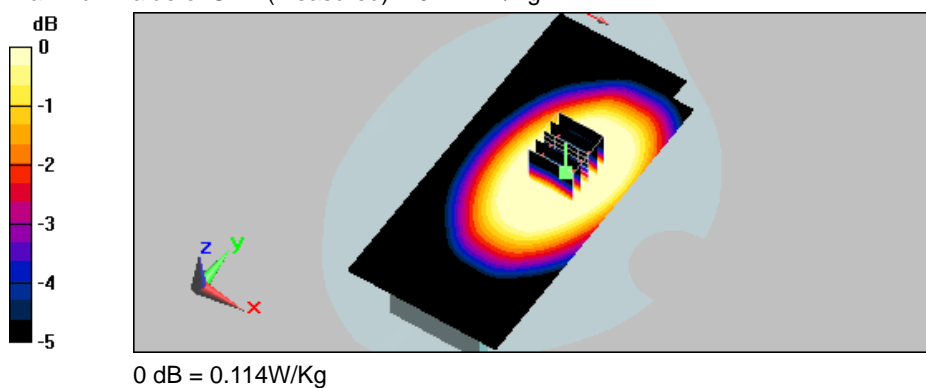
Measurement grid: $dx=8$ mm, $dy=8$ mm, $dz=5$ mm

Reference Value = 14.7 V/m; Power Drift = 0.193 dB

Peak SAR (extrapolated) = 0.128 W/kg

SAR(1 g) = 0.096 W/Kg; SAR(10 g) = 0.071 W/Kg

Maximum value of SAR (measured) = 0.114 W/Kg





T

Test Laboratory: A Test Lab Techno Corp.

Date/Time: 6/3/2013 2:13:28 PM

#1_Flat_FRS CH11_Brain_Front surface to phantom 25mm_Alkaline

DUT: MU350R; Type: Walkie Talkie; FCC ID: RAQMUEFJ

Communication System: FRS; Frequency: 467.63 MHz; Duty Cycle: 1:1

Medium parameters used: $f = 468$ MHz; $\sigma = 0.907$ mho/m; $\epsilon_r = 44$; $\rho = 1000$ kg/m³

Phantom section: Flat Section

Measurement Standard: DASYS (IEEE/IEC)

DASY5 Configuration:

- Area Scan setting - Find Secondary Maximum Within: 2.0dB and with a peak SAR value greater than 0.5 W/Kg
- Probe: EX3DV3 - SN3519; ConvF(10.8, 10.8, 10.8); Calibrated: 2/20/2013
- Sensor-Surface: 2mm (Mechanical Surface Detection)
- Electronics: DAE4 Sn779; Calibrated: 2/13/2013
- Phantom: SAM with CRP; Type: SAM; Serial: TP-1150 and higher
- Measurement SW: DASYS, V5.0 Build 125; SEMCAD X Version 13.4 Build 125

Flat/Area Scan (71x151x1):

Measurement grid: dx=15mm, dy=15mm

Maximum value of SAR (interpolated) = 0.345 W/Kg

Flat/Zoom Scan (5x5x7)/Cube 0:

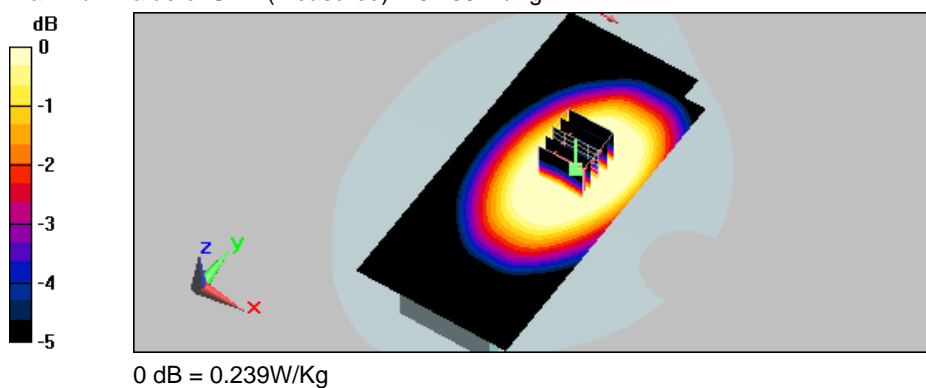
Measurement grid: dx=8mm, dy=8mm, dz=5mm

Reference Value = 21.4 V/m; Power Drift = -0.049 dB

Peak SAR (extrapolated) = 0.270 W/kg

SAR(1 g) = 0.203 W/Kg; SAR(10 g) = 0.150 W/Kg

Maximum value of SAR (measured) = 0.239 W/Kg



Test Laboratory: A Test Lab Techno Corp.

Date/Time: 6/3/2013 1:12:18 PM

#10_Flat_GMRS CH4_Brain_Front surface to phantom 25mm_Ni-MH

DUT: MU350R; Type: Walkie Talkie; FCC ID: RAQMUEFJ

Communication System: GMRS; Frequency: 462.637 MHz; Duty Cycle: 1:1

Medium parameters used: $f = 463 \text{ MHz}$; $\sigma = 0.902 \text{ mho/m}$; $\epsilon_r = 44.1$; $\rho = 1000 \text{ kg/m}^3$

Phantom section: Flat Section

Measurement Standard: DASYS (IEEE/IEC)

DASY5 Configuration:

- Area Scan setting - Find Secondary Maximum Within: 2.0dB and with a peak SAR value greater than 0.5 W/Kg
- Probe: EX3DV3 - SN3519; ConvF(10.8, 10.8, 10.8); Calibrated: 2/20/2013
- Sensor-Surface: 2mm (Mechanical Surface Detection)
- Electronics: DAE4 Sn779; Calibrated: 2/13/2013
- Phantom: SAM with CRP; Type: SAM; Serial: TP-1150 and higher
- Measurement SW: DASYS, V5.0 Build 125; SEMCAD X Version 13.4 Build 125

Flat/Area Scan (71x151x1):

Measurement grid: $dx=15\text{mm}$, $dy=15\text{mm}$

Maximum value of SAR (interpolated) = 0.160 W/Kg

Flat/Zoom Scan (5x5x7)/Cube 0:

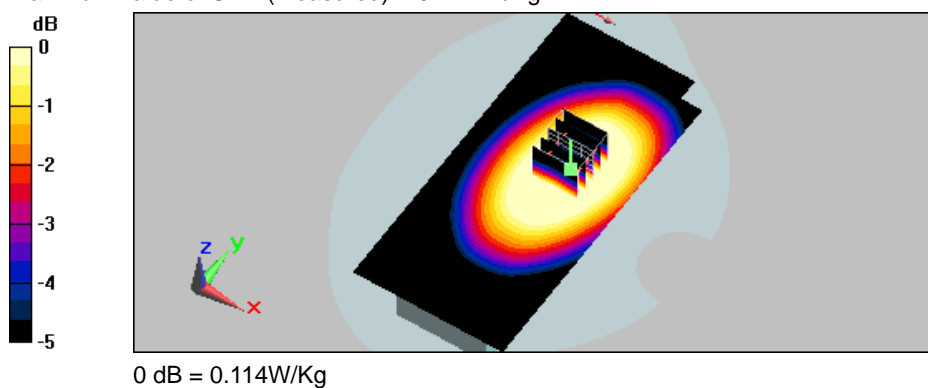
Measurement grid: $dx=8\text{mm}$, $dy=8\text{mm}$, $dz=5\text{mm}$

Reference Value = 14.1 V/m; Power Drift = -0.033 dB

Peak SAR (extrapolated) = 0.129 W/kg

SAR(1 g) = 0.097 W/Kg; SAR(10 g) = 0.072 W/Kg

Maximum value of SAR (measured) = 0.114 W/Kg



Test Laboratory: A Test Lab Techno Corp.

Date/Time: 6/3/2013 1:47:07 PM

#7_Flat_GMRS CH4_Brain_Front surface to phantom 25mm_Alkaline

DUT: MU350R; Type: Walkie Talkie; FCC ID: RAQMUEFJ

Communication System: GMRS; Frequency: 462.637 MHz; Duty Cycle: 1:1

Medium parameters used: $f = 463 \text{ MHz}$; $\sigma = 0.902 \text{ mho/m}$; $\epsilon_r = 44.1$; $\rho = 1000 \text{ kg/m}^3$

Phantom section: Flat Section

Measurement Standard: DASYS (IEEE/IEC)

DASY5 Configuration:

- Area Scan setting - Find Secondary Maximum Within: 2.0dB and with a peak SAR value greater than 0.5 W/Kg
- Probe: EX3DV3 - SN3519; ConvF(10.8, 10.8, 10.8); Calibrated: 2/20/2013
- Sensor-Surface: 2mm (Mechanical Surface Detection)
- Electronics: DAE4 Sn779; Calibrated: 2/13/2013
- Phantom: SAM with CRP; Type: SAM; Serial: TP-1150 and higher
- Measurement SW: DASYS, V5.0 Build 125; SEMCAD X Version 13.4 Build 125

Flat/Area Scan (71x151x1):

Measurement grid: $dx=15\text{mm}$, $dy=15\text{mm}$

Maximum value of SAR (interpolated) = 0.318 W/Kg

Flat/Zoom Scan (5x5x7)/Cube 0:

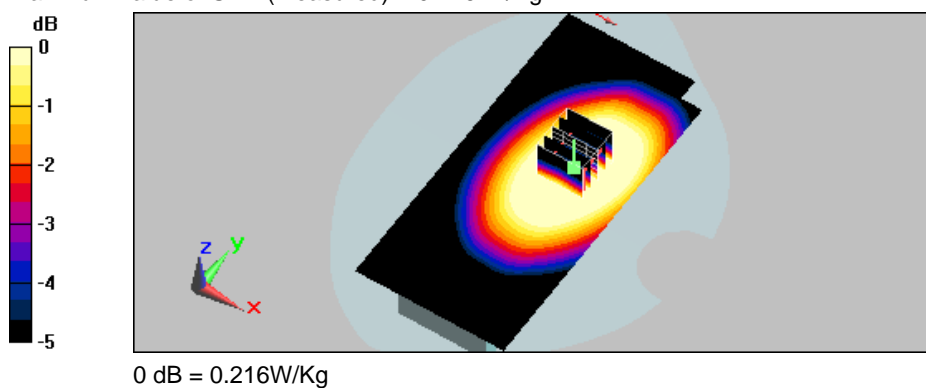
Measurement grid: $dx=8\text{mm}$, $dy=8\text{mm}$, $dz=5\text{mm}$

Reference Value = 19.5 V/m; Power Drift = -0.059 dB

Peak SAR (extrapolated) = 0.245 W/kg

SAR(1 g) = 0.184 W/Kg; SAR(10 g) = 0.136 W/Kg

Maximum value of SAR (measured) = 0.216 W/Kg





Test Laboratory: A Test Lab Techno Corp.

Date/Time: 6/3/2013 3:57:52 PM

#5_Flat_FRS CH11_muscle_Back surface to phantom 10mm_Ni-MH_Flexible Ear Receiver

DUT: MU350R; Type: Walkie Talkie; FCC ID: RAQMUEFJ

Communication System: FRS; Frequency: 467.63 MHz; Duty Cycle: 1:1

Medium parameters used: $f = 468 \text{ MHz}$; $\sigma = 0.977 \text{ mho/m}$; $\epsilon_r = 54$; $\rho = 1000 \text{ kg/m}^3$

Phantom section: Flat Section

Measurement Standard: DASYS (IEEE/IEC)

DASY5 Configuration:

- Area Scan setting - Find Secondary Maximum Within: 2.0dB and with a peak SAR value greater than 0.5 W/Kg
- Probe: EX3DV3 - SN3519; ConvF(11.79, 11.79, 11.79); Calibrated: 2/20/2013
- Sensor-Surface: 2mm (Mechanical Surface Detection)
- Electronics: DAE4 Sn779; Calibrated: 2/13/2013
- Phantom: SAM with CRP; Type: SAM; Serial: TP-1150 and higher
- Measurement SW: DASYS, V5.0 Build 125; SEMCAD X Version 13.4 Build 125

Flat/Area Scan (71x151x1):

Measurement grid: $dx=15\text{mm}$, $dy=15\text{mm}$

Maximum value of SAR (interpolated) = 0.283 W/Kg

Flat/Zoom Scan (5x5x7)/Cube 0:

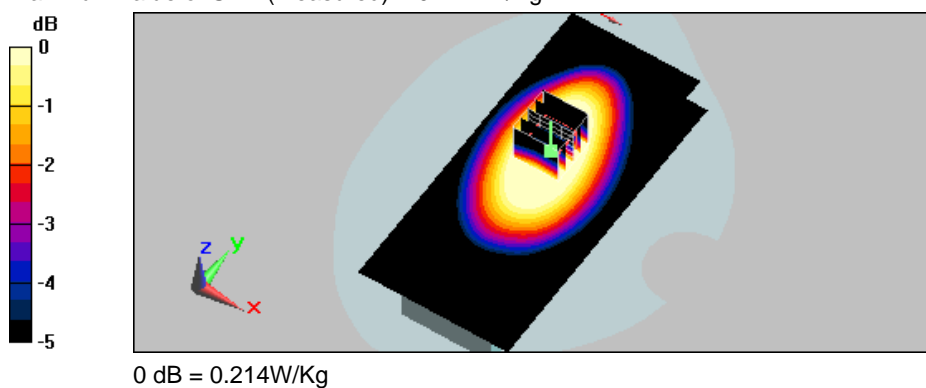
Measurement grid: $dx=8\text{mm}$, $dy=8\text{mm}$, $dz=5\text{mm}$

Reference Value = 17.7 V/m; Power Drift = -0.00198 dB

Peak SAR (extrapolated) = 0.247 W/kg

SAR(1 g) = 0.179 W/Kg; SAR(10 g) = 0.131 W/Kg

Maximum value of SAR (measured) = 0.214 W/Kg





Test Laboratory: A Test Lab Techno Corp.

Date/Time: 5/9/2013 7:41:24 PM

#2_Flat_FRS CH11_muscle_Back surface to phantom 10mm_Alkaline_Flexible Ear Receiver

DUT: MU350R; Type: Walkie Talkie; FCC ID: RAQMUEFJ

Communication System: FRS; Frequency: 467.63 MHz; Duty Cycle: 1:4

Medium parameters used: $f = 468$ MHz; $\sigma = 0.977$ mho/m; $\epsilon_r = 54$; $\rho = 1000$ kg/m³

Phantom section: Flat Section

Measurement Standard: DASYS (IEEE/IEC)

DASY5 Configuration:

- Area Scan setting - Find Secondary Maximum Within: 2.0dB and with a peak SAR value greater than 0.5 W/Kg
- Probe: EX3DV3 - SN3519; ConvF(11.79, 11.79, 11.79); Calibrated: 2/20/2013
- Sensor-Surface: 2mm (Mechanical Surface Detection)
- Electronics: DAE4 Sn779; Calibrated: 2/13/2013
- Phantom: SAM with CRP; Type: SAM; Serial: TP-1150 and higher
- Measurement SW: DASYS, V5.0 Build 125; SEMCAD X Version 13.4 Build 125

Flat/Area Scan (71x151x1):

Measurement grid: dx=15mm, dy=15mm

Maximum value of SAR (interpolated) = 0.539 W/Kg

Flat/Zoom Scan (5x5x7)/Cube 0:

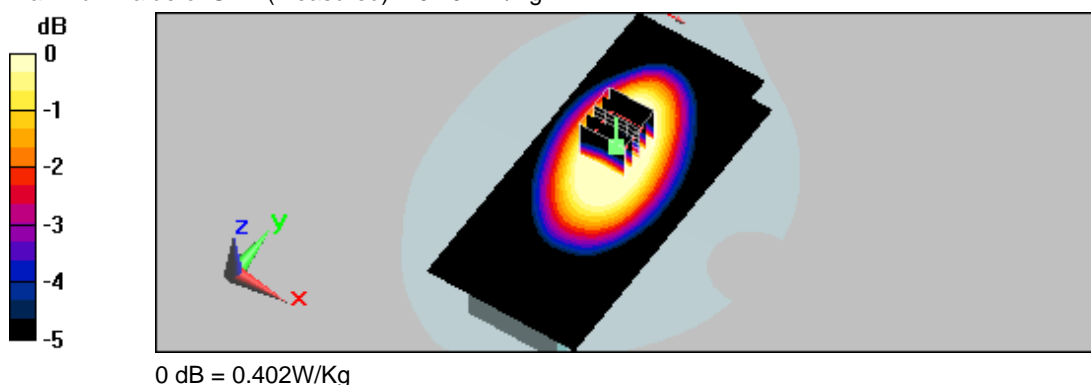
Measurement grid: dx=8mm, dy=8mm, dz=5mm

Reference Value = 26 V/m; Power Drift = -0.019 dB

Peak SAR (extrapolated) = 0.470 W/kg

SAR(1 g) = 0.331 W/Kg; SAR(10 g) = 0.239 W/Kg

Maximum value of SAR (measured) = 0.402 W/Kg





Test Laboratory: A Test Lab Techno Corp.

Date/Time: 6/3/2013 4:25:59 PM

#6_Flat_FRS CH11_muscle_Back surface to phantom 0mm_belt clip_Ni-MH_Flexible Ear Receiver

DUT: MU350R; Type: Walkie Talkie; FCC ID: RAQMUEFJ

Communication System: FRS; Frequency: 467.63 MHz; Duty Cycle: 1:1

Medium parameters used: $f = 468$ MHz; $\sigma = 0.977$ mho/m; $\epsilon_r = 54$; $\rho = 1000$ kg/m³

Phantom section: Flat Section

Measurement Standard: DASYS (IEEE/IEC)

DASY5 Configuration:

- Area Scan setting - Find Secondary Maximum Within: 2.0dB and with a peak SAR value greater than 0.5 W/Kg
- Probe: EX3DV3 - SN3519; ConvF(11.79, 11.79, 11.79); Calibrated: 2/20/2013
- Sensor-Surface: 2mm (Mechanical Surface Detection)
- Electronics: DAE4 Sn779; Calibrated: 2/13/2013
- Phantom: SAM with CRP; Type: SAM; Serial: TP-1150 and higher
- Measurement SW: DASY5, V5.0 Build 125; SEMCAD X Version 13.4 Build 125

Flat/Area Scan (71x151x1):

Measurement grid: $dx=15$ mm, $dy=15$ mm

Maximum value of SAR (interpolated) = 0.180 W/Kg

Flat/Zoom Scan (5x5x7)/Cube 0:

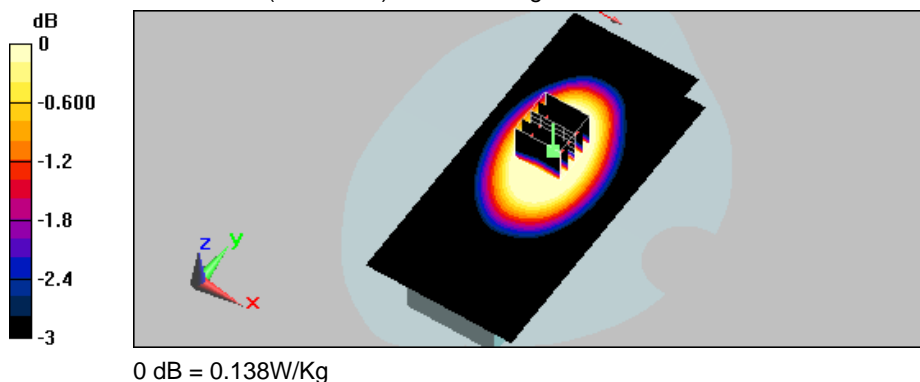
Measurement grid: $dx=8$ mm, $dy=8$ mm, $dz=5$ mm

Reference Value = 14.6 V/m; Power Drift = 0.00241 dB

Peak SAR (extrapolated) = 0.158 W/kg

SAR(1 g) = 0.117 W/Kg; SAR(10 g) = 0.087 W/Kg

Maximum value of SAR (measured) = 0.138 W/Kg



Test Laboratory: A Test Lab Techno Corp.

Date/Time: 5/9/2013 8:06:52 PM

#3_Flat_FRS CH11_muscle_Back surface to phantom 0mm_belt clip_Alkaline_Flexible Ear Receiver

DUT: MU350R; Type: Walkie Talkie; FCC ID: RAQMUEFJ

Communication System: FRS; Frequency: 467.63 MHz; Duty Cycle: 1:4

Medium parameters used: $f = 468 \text{ MHz}$; $\sigma = 0.977 \text{ mho/m}$; $\epsilon_r = 54$; $\rho = 1000 \text{ kg/m}^3$

Phantom section: Flat Section

Measurement Standard: DASYS (IEEE/IEC)

DASY5 Configuration:

- Area Scan setting - Find Secondary Maximum Within: 2.0dB and with a peak SAR value greater than 0.5 W/Kg
- Probe: EX3DV3 - SN3519; ConvF(11.79, 11.79, 11.79); Calibrated: 2/20/2013
- Sensor-Surface: 2mm (Mechanical Surface Detection)
- Electronics: DAE4 Sn779; Calibrated: 2/13/2013
- Phantom: SAM with CRP; Type: SAM; Serial: TP-1150 and higher
- Measurement SW: DASYS, V5.0 Build 125; SEMCAD X Version 13.4 Build 125

Flat/Area Scan (71x151x1):

Measurement grid: $dx=15\text{mm}$, $dy=15\text{mm}$

Maximum value of SAR (interpolated) = 0.380 W/Kg

Flat/Zoom Scan (5x5x7)/Cube 0:

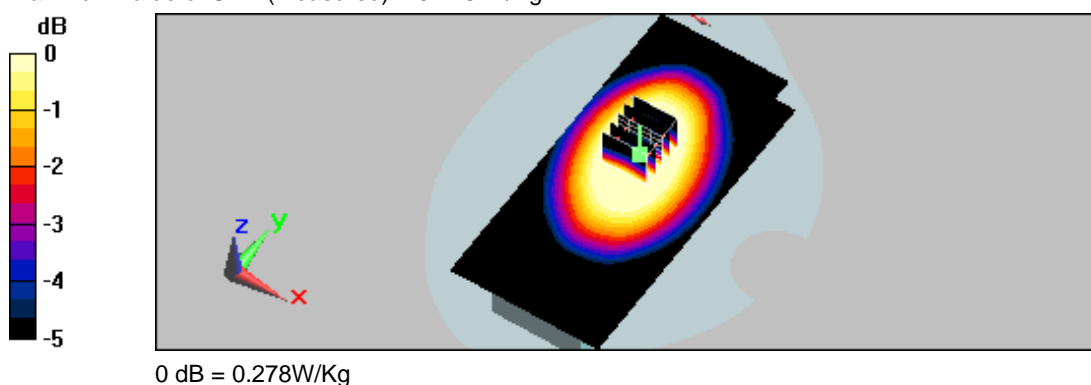
Measurement grid: $dx=8\text{mm}$, $dy=8\text{mm}$, $dz=5\text{mm}$

Reference Value = 23.2 V/m; Power Drift = -0.043 dB

Peak SAR (extrapolated) = 0.320 W/kg

SAR(1 g) = 0.233 W/Kg; SAR(10 g) = 0.172 W/Kg

Maximum value of SAR (measured) = 0.278 W/Kg



Test Laboratory: A Test Lab Techno Corp.

Date/Time: 5/10/2013 5:44:39 AM

#11_Flat_GMRS CH4_muscle_Back surface to phantom 10mm_Ni-MH_Flexible Ear Receiver

DUT: MU350R; Type: Walkie Talkie; FCC ID: RAQMUEFJ

Communication System: GMRS; Frequency: 462.637 MHz; Duty Cycle: 1:1

Medium parameters used: $f = 463 \text{ MHz}$; $\sigma = 0.971 \text{ mho/m}$; $\epsilon_r = 54.1$; $\rho = 1000 \text{ kg/m}^3$

Phantom section: Flat Section

Measurement Standard: DASYS (IEEE/IEC)

DASY5 Configuration:

- Area Scan setting - Find Secondary Maximum Within: 2.0dB and with a peak SAR value greater than 0.5 W/Kg
- Probe: EX3DV3 - SN3519; ConvF(11.79, 11.79, 11.79); Calibrated: 2/20/2013
- Sensor-Surface: 2mm (Mechanical Surface Detection)
- Electronics: DAE4 Sn779; Calibrated: 2/13/2013
- Phantom: SAM with CRP; Type: SAM; Serial: TP-1150 and higher
- Measurement SW: DASYS, V5.0 Build 125; SEMCAD X Version 13.4 Build 125

Flat/Area Scan (71x151x1):

Measurement grid: $dx=15\text{mm}$, $dy=15\text{mm}$

Maximum value of SAR (interpolated) = 3.09 W/Kg

Flat/Zoom Scan (5x5x7)/Cube 0:

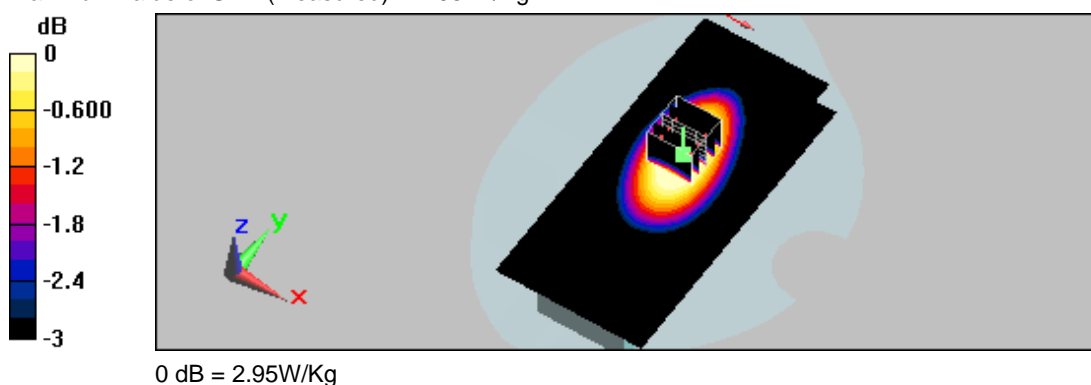
Measurement grid: $dx=8\text{mm}$, $dy=8\text{mm}$, $dz=5\text{mm}$

Reference Value = 54.5 V/m; Power Drift = -0.00851 dB

Peak SAR (extrapolated) = 3.39 W/kg

SAR(1 g) = 2.42 W/Kg; SAR(10 g) = 1.77 W/Kg

Maximum value of SAR (measured) = 2.95 W/Kg





Test Laboratory: A Test Lab Techno Corp.

Date/Time: 5/9/2013 9:00:18 PM

#8_Flat_GMRS CH4_muscle_Back surface to phantom 10mm_Alkaline_Flexible Ear Receiver

DUT: MU350R; Type: Walkie Talkie; FCC ID: RAQMUEFJ

Communication System: GMRS; Frequency: 462.637 MHz; Duty Cycle: 1:1

Medium parameters used: $f = 463$ MHz; $\sigma = 0.971$ mho/m; $\epsilon_r = 54.1$; $\rho = 1000$ kg/m³

Phantom section: Flat Section

Measurement Standard: DASYS (IEEE/IEC)

DASY5 Configuration:

- Area Scan setting - Find Secondary Maximum Within: 2.0dB and with a peak SAR value greater than 0.5 W/Kg
- Probe: EX3DV3 - SN3519; ConvF(11.79, 11.79, 11.79); Calibrated: 2/20/2013
- Sensor-Surface: 2mm (Mechanical Surface Detection)
- Electronics: DAE4 Sn779; Calibrated: 2/13/2013
- Phantom: SAM with CRP; Type: SAM; Serial: TP-1150 and higher
- Measurement SW: DASYS, V5.0 Build 125; SEMCAD X Version 13.4 Build 125

Flat/Area Scan (71x151x1):

Measurement grid: dx=15mm, dy=15mm

Maximum value of SAR (interpolated) = 3.04 W/Kg

Flat/Zoom Scan (5x5x7)/Cube 0:

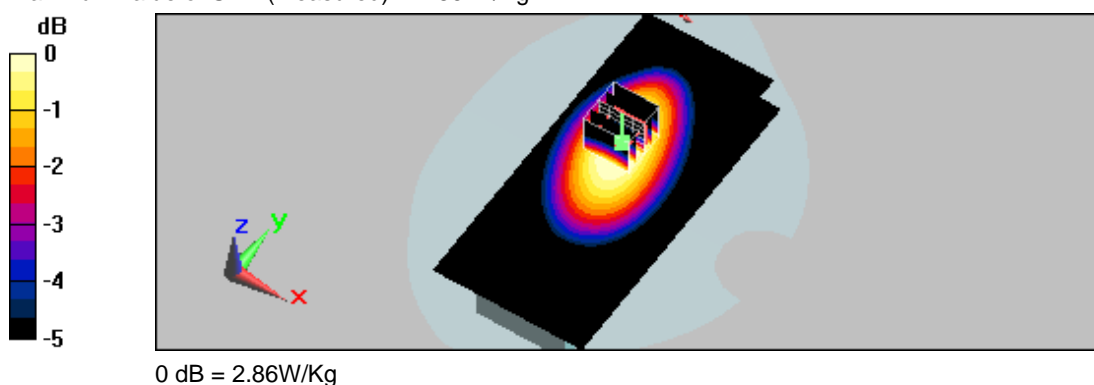
Measurement grid: dx=8mm, dy=8mm, dz=5mm

Reference Value = 55.7 V/m; Power Drift = -0.000792 dB

Peak SAR (extrapolated) = 3.32 W/kg

SAR(1 g) = 2.37 W/Kg; SAR(10 g) = 1.73 W/Kg

Maximum value of SAR (measured) = 2.86 W/Kg



Test Laboratory: A Test Lab Techno Corp.

Date/Time: 5/10/2013 6:24:02 AM

#12_Flat_GMRS CH4_muscle_Back surface to phantom 0mm_belt clip_Ni-MH_Flexible Ear Receiver

DUT: MU350R; Type: Walkie Talkie; FCC ID: RAQMUEFJ

Communication System: GMRS; Frequency: 462.637 MHz; Duty Cycle: 1:1

Medium parameters used: $f = 463 \text{ MHz}$; $\sigma = 0.971 \text{ mho/m}$; $\epsilon_r = 54.1$; $\rho = 1000 \text{ kg/m}^3$

Phantom section: Flat Section

Measurement Standard: DASYS (IEEE/IEC)

DASY5 Configuration:

- Area Scan setting - Find Secondary Maximum Within: 2.0dB and with a peak SAR value greater than 0.5 W/Kg
- Probe: EX3DV3 - SN3519; ConvF(11.79, 11.79, 11.79); Calibrated: 2/20/2013
- Sensor-Surface: 2mm (Mechanical Surface Detection)
- Electronics: DAE4 Sn779; Calibrated: 2/13/2013
- Phantom: SAM with CRP; Type: SAM; Serial: TP-1150 and higher
- Measurement SW: DASYS, V5.0 Build 125; SEMCAD X Version 13.4 Build 125

Flat/Area Scan (71x151x1):

Measurement grid: $dx=15\text{mm}$, $dy=15\text{mm}$

Maximum value of SAR (interpolated) = 2.58 W/Kg

Flat/Zoom Scan (5x5x7)/Cube 0:

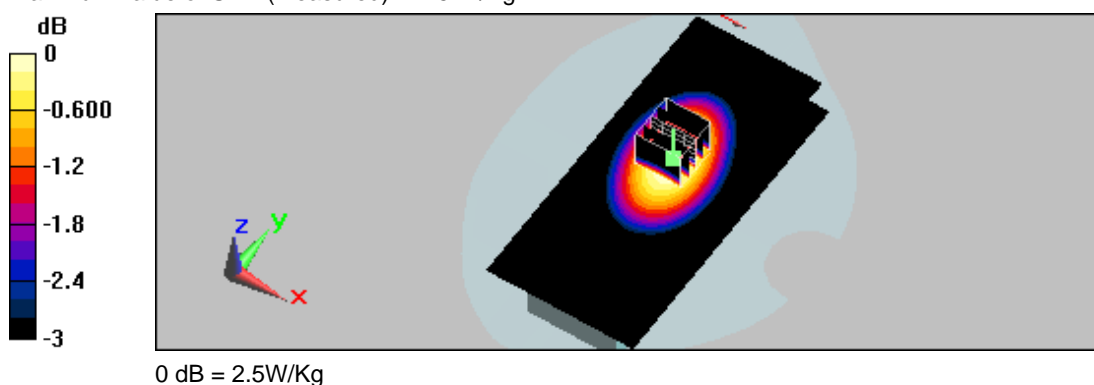
Measurement grid: $dx=8\text{mm}$, $dy=8\text{mm}$, $dz=5\text{mm}$

Reference Value = 51.9 V/m; Power Drift = -0.011 dB

Peak SAR (extrapolated) = 2.86 W/kg

SAR(1 g) = 2.1 W/Kg; SAR(10 g) = 1.57 W/Kg

Maximum value of SAR (measured) = 2.5 W/Kg



Test Laboratory: A Test Lab Techno Corp.

Date/Time: 5/9/2013 9:53:11 PM

#9_Flat_GMRS CH4_muscle_Back surface to phantom 0mm_belt clip_Alkaline_Flexible Ear Receiver

DUT: MU350R; Type: Walkie Talkie; FCC ID: RAQMUEFJ

Communication System: GMRS; Frequency: 462.637 MHz; Duty Cycle: 1:1

Medium parameters used: $f = 463 \text{ MHz}$; $\sigma = 0.971 \text{ mho/m}$; $\epsilon_r = 54.1$; $\rho = 1000 \text{ kg/m}^3$

Phantom section: Flat Section

Measurement Standard: DASYS (IEEE/IEC)

DASY5 Configuration:

- Area Scan setting - Find Secondary Maximum Within: 2.0dB and with a peak SAR value greater than 0.5 W/Kg
- Probe: EX3DV3 - SN3519; ConvF(11.79, 11.79, 11.79); Calibrated: 2/20/2013
- Sensor-Surface: 2mm (Mechanical Surface Detection)
- Electronics: DAE4 Sn779; Calibrated: 2/13/2013
- Phantom: SAM with CRP; Type: SAM; Serial: TP-1150 and higher
- Measurement SW: DASYS, V5.0 Build 125; SEMCAD X Version 13.4 Build 125

Flat/Area Scan (71x151x1):

Measurement grid: $dx=15\text{mm}$, $dy=15\text{mm}$

Maximum value of SAR (interpolated) = 2.25 W/Kg

Flat/Zoom Scan (5x5x7)/Cube 0:

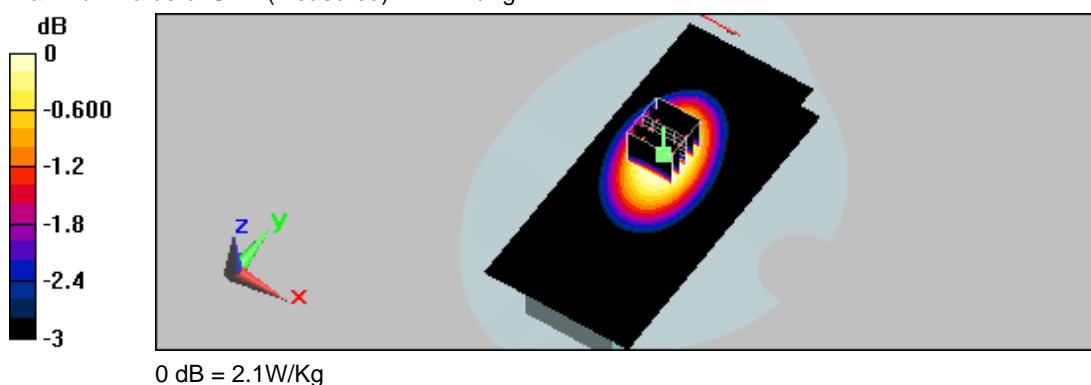
Measurement grid: $dx=8\text{mm}$, $dy=8\text{mm}$, $dz=5\text{mm}$

Reference Value = 49.8 V/m; Power Drift = -0.019 dB

Peak SAR (extrapolated) = 2.41 W/kg

SAR(1 g) = 1.77 W/Kg; SAR(10 g) = 1.31 W/Kg

Maximum value of SAR (measured) = 2.1 W/Kg



Test Laboratory: A Test Lab Techno Corp.

Date/Time: 6/3/2013 6:29:30 PM

#13_Flat_GMRS CH4_Original #12_muscle_Back surface to phantom 10mm_Ni-MH_Flexible Ear Receiver_one measurement

DUT: MU350R; Type: Walkie Talkie; FCC ID: RAQMUEFJ

Communication System: GMRS; Frequency: 462.637 MHz; Duty Cycle: 1:1

Medium parameters used: $f = 463 \text{ MHz}$; $\sigma = 0.971 \text{ mho/m}$; $\epsilon_r = 54.1$; $\rho = 1000 \text{ kg/m}^3$

Phantom section: Flat Section

Measurement Standard: DASYS (IEEE/IEC)

DASY5 Configuration:

- Area Scan setting - Find Secondary Maximum Within: 2.0dB and with a peak SAR value greater than 0.5 W/Kg
- Probe: EX3DV3 - SN3519; ConvF(11.79, 11.79, 11.79); Calibrated: 2/20/2013
- Sensor-Surface: 2mm (Mechanical Surface Detection)
- Electronics: DAE4 Sn779; Calibrated: 2/13/2013
- Phantom: SAM with CRP; Type: SAM; Serial: TP-1150 and higher
- Measurement SW: DASYS, V5.0 Build 125; SEMCAD X Version 13.4 Build 125

Flat/Area Scan (71x151x1):

Measurement grid: $dx=15\text{mm}$, $dy=15\text{mm}$

Maximum value of SAR (interpolated) = 3.03 W/kg

Flat/Zoom Scan (5x5x7)/Cube 0:

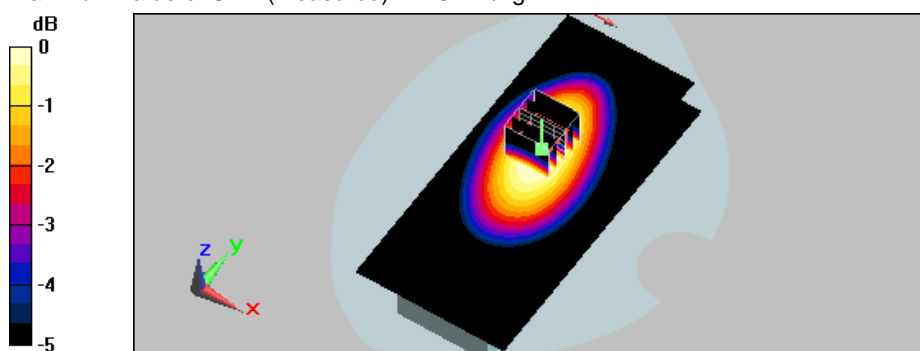
Measurement grid: $dx=8\text{mm}$, $dy=8\text{mm}$, $dz=5\text{mm}$

Reference Value = 53.9 V/m; Power Drift = -0.00341 dB

Peak SAR (extrapolated) = 3.33 W/kg

SAR(1 g) = 2.37 W/kg; SAR(10 g) = 1.72 W/kg

Maximum value of SAR (measured) = 2.87 W/kg



0 dB = 2.87W/kg

Test Laboratory: A Test Lab Techno Corp.

Date/Time: 6/4/2013 8:36:47 AM

#14_Flat_GMRS CH4_Original #12_muscle_Back surface to phantom 10mm_Ni-MH_Flexible Ear Receiver_Second measurement

DUT: MU350R; Type: Walkie Talkie; FCC ID: RAQMUEFJ

Communication System: GMRS; Frequency: 462.637 MHz; Duty Cycle: 1:1

Medium parameters used: $f = 463$ MHz; $\sigma = 0.971$ mho/m; $\epsilon_r = 54.1$; $\rho = 1000$ kg/m³

Phantom section: Flat Section

Measurement Standard: DASYS (IEEE/IEC)

DASY5 Configuration:

- Area Scan setting - Find Secondary Maximum Within: 2.0dB and with a peak SAR value greater than 0.5 W/Kg
- Probe: EX3DV3 - SN3519; ConvF(11.79, 11.79, 11.79); Calibrated: 2/20/2013
- Sensor-Surface: 2mm (Mechanical Surface Detection)
- Electronics: DAE4 Sn779; Calibrated: 2/13/2013
- Phantom: SAM with CRP; Type: SAM; Serial: TP-1150 and higher
- Measurement SW: DASYS, V5.0 Build 125; SEMCAD X Version 13.4 Build 125

Flat/Area Scan (71x151x1):

Measurement grid: $dx=15$ mm, $dy=15$ mm

Maximum value of SAR (interpolated) = 3.08 W/kg

Flat/Zoom Scan (5x5x7)/Cube 0:

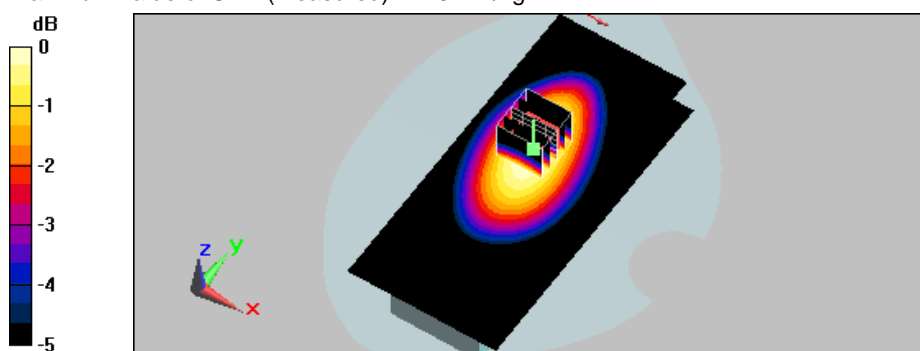
Measurement grid: $dx=8$ mm, $dy=8$ mm, $dz=5$ mm

Reference Value = 54.3 V/m; Power Drift = 0.00592 dB

Peak SAR (extrapolated) = 3.36 W/kg

SAR(1 g) = 2.4 W/kg; SAR(10 g) = 1.76 W/kg

Maximum value of SAR (measured) = 2.92 W/kg



0 dB = 2.92W/kg

Test Laboratory: A Test Lab Techno Corp.

Date/Time: 6/4/2013 9:15:22 AM

#15_Flat_GMRS CH4_Original #12_muscle_Back surface to phantom 10mm_Ni-MH_Flexible Ear Receiver_Third measuring

DUT: MU350R; Type: Walkie Talkie; FCC ID: RAQMUEFJ

Communication System: GMRS; Frequency: 462.637 MHz; Duty Cycle: 1:1

Medium parameters used: $f = 463 \text{ MHz}$; $\sigma = 0.971 \text{ mho/m}$; $\epsilon_r = 54.1$; $\rho = 1000 \text{ kg/m}^3$

Phantom section: Flat Section

Measurement Standard: DASYS (IEEE/IEC)

DASY5 Configuration:

- Area Scan setting - Find Secondary Maximum Within: 2.0dB and with a peak SAR value greater than 0.5 W/Kg
- Probe: EX3DV3 - SN3519; ConvF(11.79, 11.79, 11.79); Calibrated: 2/20/2013
- Sensor-Surface: 2mm (Mechanical Surface Detection)
- Electronics: DAE4 Sn779; Calibrated: 2/13/2013
- Phantom: SAM with CRP; Type: SAM; Serial: TP-1150 and higher
- Measurement SW: DASYS, V5.0 Build 125; SEMCAD X Version 13.4 Build 125

Flat/Area Scan (71x151x1):

Measurement grid: $dx=15\text{mm}$, $dy=15\text{mm}$

Maximum value of SAR (interpolated) = 3.06 W/kg

Flat/Zoom Scan (5x5x7)/Cube 0:

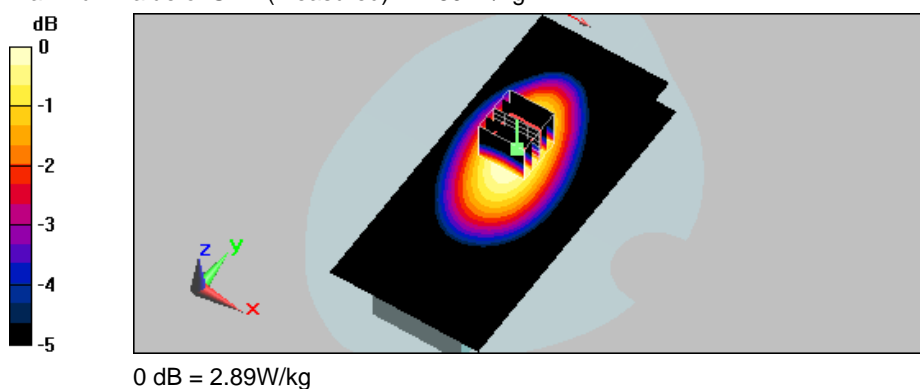
Measurement grid: $dx=8\text{mm}$, $dy=8\text{mm}$, $dz=5\text{mm}$

Reference Value = 54 V/m; Power Drift = 0.012 dB

Peak SAR (extrapolated) = 3.34 W/kg

SAR(1 g) = 2.38 W/kg; SAR(10 g) = 1.73 W/kg

Maximum value of SAR (measured) = 2.89 W/kg





Appendix C - Calibration

All of the instruments Calibration information are listed below.

- Dipole _ D450V2 SN:1021 Calibration No.D450V2-1021_Feb13
- Probe _ EX3DV3 SN:3519 Calibration No.EX3-3519_Feb13
- DAE _ DAE4 SN:779 Calibration No.DAE4-779_Feb13

**Calibration Laboratory of
Schmid & Partner
Engineering AG**
Zeughausstrasse 43, 8004 Zurich, Switzerland



S Schweizerischer Kalibrierdienst
C Service suisse d'étalonnage
S Servizio svizzero di taratura
S Swiss Calibration Service

Accredited by the Swiss Accreditation Service (SAS)
The Swiss Accreditation Service is one of the signatories to the EA
Multilateral Agreement for the recognition of calibration certificates

Accreditation No.: **SCS 108**

Client **ATL (Auden)**

Certificate No: **D450V2-1021_Feb13**

CALIBRATION CERTIFICATE

Object **D450V2 - SN:1021**

Calibration procedure(s) **QA CAL-15.v7**
Calibration procedure for dipole validation kits below 700 MHz

Calibration date: **February 19, 2013**

This calibration certificate documents the traceability to national standards, which realize the physical units of measurements (SI).
The measurements and the uncertainties with confidence probability are given on the following pages and are part of the certificate.

All calibrations have been conducted in the closed laboratory facility: environment temperature $(22 \pm 3)^{\circ}\text{C}$ and humidity $< 70\%$.

Calibration Equipment used (M&TE critical for calibration)

Primary Standards	ID #	Cal Date (Certificate No.)	Scheduled Calibration
Power meter E4419B	GB41293874	29-Mar-12 (No. 217-01508)	Apr-13
Power sensor E4412A	MY41498087	29-Mar-12 (No. 217-01508)	Apr-13
Reference 3 dB Attenuator	SN: S5054 (3c)	27-Mar-12 (No. 217-01531)	Apr-13
Reference 20 dB Attenuator	SN: S5086 (20b)	27-Mar-12 (No. 217-01529)	Apr-13
Type-N mismatch combination	SN: 5047.3 / 06327	27-Mar-12 (No. 217-01533)	Apr-13
Reference Probe ET3DV6	SN: 1507	28-Dec-12 (No. ET3-1507_Dec12)	Dec-13
DAE4	SN: 654	18-Apr-12 (No. DAE4-654_Apr12)	Apr-13
Secondary Standards	ID #	Check Date (in house)	Scheduled Check
Power sensor HP 8481A	MY41092317	18-Oct-02 (in house check Oct-11)	In house check: Oct-13
RF generator R&S SMT-06	100005	04-Aug-99 (in house check Oct-11)	In house check: Oct-13
Network Analyzer HP 8753E	US37390585 S4206	18-Oct-01 (in house check Oct-12)	In house check: Oct-13

Calibrated by: **Name** Jeton Kastrati **Function** Laboratory Technician

Approved by: **Name** Katja Pokovic **Function** Technical Manager

Signature


Issued: February 19, 2013

This calibration certificate shall not be reproduced except in full without written approval of the laboratory.

Certificate No: D450V2-1021_Feb13

Page 1 of 8

Calibration Laboratory of
Schmid & Partner
Engineering AG
 Zeughausstrasse 43, 8004 Zurich, Switzerland



S Schweizerischer Kalibrierdienst
C Service suisse d'étalonnage
S Servizio svizzero di taratura
S Swiss Calibration Service

Accredited by the Swiss Accreditation Service (SAS)

The Swiss Accreditation Service is one of the signatories to the EA
 Multilateral Agreement for the recognition of calibration certificates

Accreditation No.: SCS 108

Glossary:

TSL	tissue simulating liquid
ConvF	sensitivity in TSL / NORM x,y,z
N/A	not applicable or not measured

Calibration is Performed According to the Following Standards:

- IEEE Std 1528-2003, "IEEE Recommended Practice for Determining the Peak Spatial-Averaged Specific Absorption Rate (SAR) in the Human Head from Wireless Communications Devices: Measurement Techniques", December 2003
- IEC 62209-1, "Procedure to measure the Specific Absorption Rate (SAR) for hand-held devices used in close proximity to the ear (frequency range of 300 MHz to 3 GHz)", February 2005
- Federal Communications Commission Office of Engineering & Technology (FCC OET), "Evaluating Compliance with FCC Guidelines for Human Exposure to Radiofrequency Electromagnetic Fields; Additional Information for Evaluating Compliance of Mobile and Portable Devices with FCC Limits for Human Exposure to Radiofrequency Emissions", Supplement C (Edition 01-01) to Bulletin 65

Additional Documentation:

- DASY4/5 System Handbook

Methods Applied and Interpretation of Parameters:

- Measurement Conditions:** Further details are available from the Validation Report at the end of the certificate. All figures stated in the certificate are valid at the frequency indicated.
- Antenna Parameters with TSL:** The dipole is mounted with the spacer to position its feed point exactly below the center marking of the flat phantom section, with the arms oriented parallel to the body axis.
- Feed Point Impedance and Return Loss:** These parameters are measured with the dipole positioned under the liquid filled phantom. The impedance stated is transformed from the measurement at the SMA connector to the feed point. The Return Loss ensures low reflected power. No uncertainty required.
- Electrical Delay:** One-way delay between the SMA connector and the antenna feed point. No uncertainty required.
- SAR measured:** SAR measured at the stated antenna input power.
- SAR normalized:** SAR as measured, normalized to an input power of 1 W at the antenna connector.
- SAR for nominal TSL parameters:** The measured TSL parameters are used to calculate the nominal SAR result.

The reported uncertainty of measurement is stated as the standard uncertainty of measurement multiplied by the coverage factor $k=2$, which for a normal distribution corresponds to a coverage probability of approximately 95%.

Measurement Conditions

DASY system configuration, as far as not given on page 1.

DASY Version	DASY5	V52.8.5
Extrapolation	Advanced Extrapolation	
Phantom	Flat Phantom V4.4	Shell thickness: 6 ± 0.2 mm
Distance Dipole Center - TSL	15 mm	with Spacer
Zoom Scan Resolution	dx, dy, dz = 5 mm	
Frequency	450 MHz \pm 1 MHz	

Head TSL parameters

The following parameters and calculations were applied.

	Temperature	Permittivity	Conductivity
Nominal Head TSL parameters	22.0 °C	43.5	0.87 mho/m
Measured Head TSL parameters	(22.0 \pm 0.2) °C	43.8 \pm 6 %	0.88 mho/m \pm 6 %
Head TSL temperature change during test	< 0.5 °C	----	----

SAR result with Head TSL

SAR averaged over 1 cm ³ (1 g) of Head TSL	Condition	
SAR measured	250 mW input power	1.25 W/kg
SAR for nominal Head TSL parameters	normalized to 1W	4.96 W/kg \pm 18.1 % (k=2)

SAR averaged over 10 cm ³ (10 g) of Head TSL	condition	
SAR measured	250 mW input power	0.819 W/kg
SAR for nominal Head TSL parameters	normalized to 1W	3.25 W/kg \pm 17.6 % (k=2)

Body TSL parameters

The following parameters and calculations were applied.

	Temperature	Permittivity	Conductivity
Nominal Body TSL parameters	22.0 °C	56.7	0.94 mho/m
Measured Body TSL parameters	(22.0 \pm 0.2) °C	57.0 \pm 6 %	0.94 mho/m \pm 6 %
Body TSL temperature change during test	< 0.5 °C	----	----

SAR result with Body TSL

SAR averaged over 1 cm ³ (1 g) of Body TSL	Condition	
SAR measured	250 mW input power	1.19 W/kg
SAR for nominal Body TSL parameters	normalized to 1W	4.77 W/kg \pm 18.1 % (k=2)

SAR averaged over 10 cm ³ (10 g) of Body TSL	condition	
SAR measured	250 mW input power	0.786 W/kg
SAR for nominal Body TSL parameters	normalized to 1W	3.15 W/kg \pm 17.6 % (k=2)

Appendix

Antenna Parameters with Head TSL

Impedance, transformed to feed point	55.4 Ω - 4.6 j Ω
Return Loss	- 23.4 dB

Antenna Parameters with Body TSL

Impedance, transformed to feed point	53.1 Ω - 8.1 j Ω
Return Loss	- 21.6 dB

General Antenna Parameters and Design

Electrical Delay (one direction)	1.352 ns
----------------------------------	----------

After long term use with 100W radiated power, only a slight warming of the dipole near the feedpoint can be measured.

The dipole is made of standard semirigid coaxial cable. The center conductor of the feeding line is directly connected to the second arm of the dipole. The antenna is therefore short-circuited for DC-signals. On some of the dipoles, small end caps are added to the dipole arms in order to improve matching when loaded according to the position as explained in the "Measurement Conditions" paragraph. The SAR data are not affected by this change. The overall dipole length is still according to the Standard.

No excessive force must be applied to the dipole arms, because they might bend or the soldered connections near the feedpoint may be damaged.

Additional EUT Data

Manufactured by	SPEAG
Manufactured on	February 04, 2004

DASY5 Validation Report for Head TSL

Date: 19.02.2013

Test Laboratory: SPEAG, Zürich, Switzerland

DUT: Dipole 450 MHz; Type: D450V2; Serial: D450V2 - SN:1021

Communication System: CW; Frequency: 450 MHz

Medium parameters used: $f = 450$ MHz; $\sigma = 0.88$ S/m; $\epsilon_r = 43.8$; $\rho = 1000$ kg/m³

Phantom section: Flat Section

Measurement Standard: DASY5 (IEEE/IEC/ANSI C63.19-2007)

DASY52 Configuration:

- Probe: ET3DV6 - SN1507; ConvF(6.59, 6.59, 6.59); Calibrated: 28.12.2012;
- Sensor-Surface: 4mm (Mechanical Surface Detection)
- Electronics: DAE4 Sn654; Calibrated: 18.04.2012
- Phantom: Flat Phantom 4.4 ; Type: Flat Phantom 4.4; Serial: 1002
- DASY52 52.8.5(1059); SEMCAD X 14.6.8(7028)

Dipole Calibration for Head Tissue/d=15mm, Pin=250mW/Zoom Scan (7x7x7)/Cube 0:

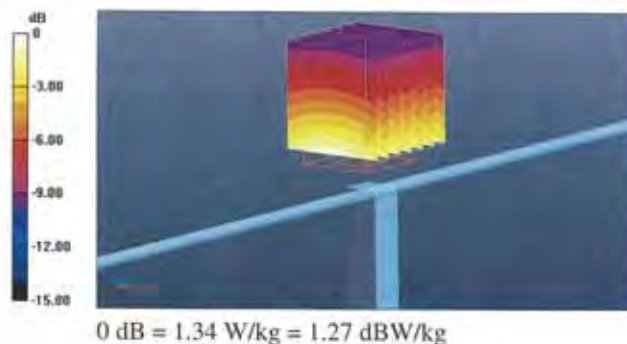
Measurement grid: dx=5mm, dy=5mm, dz=5mm

Reference Value = 40.211 V/m; Power Drift = -0.03 dB

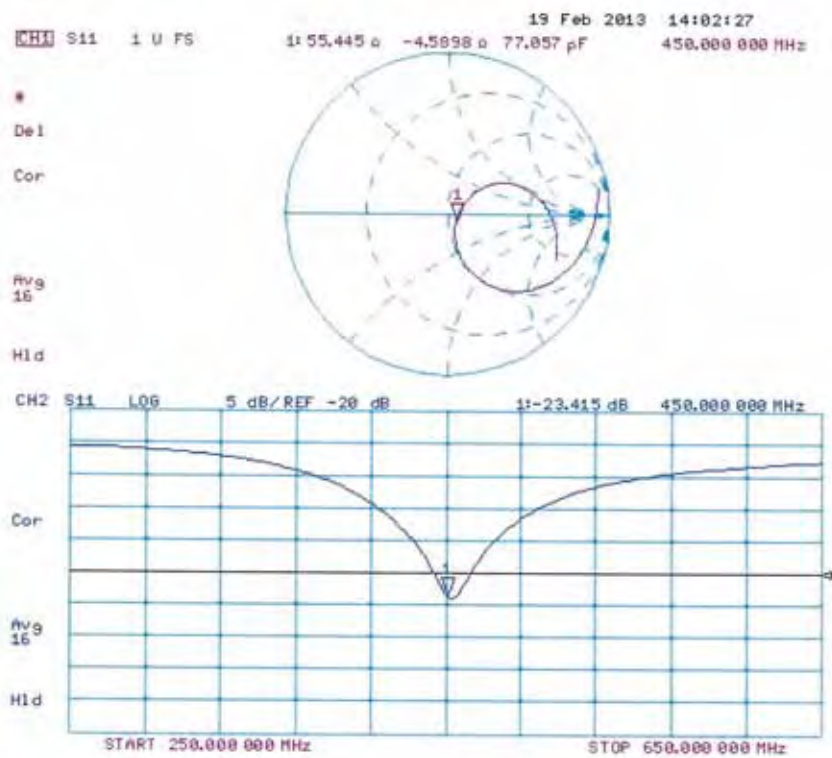
Peak SAR (extrapolated) = 1.93 W/kg

SAR(1 g) = 1.25 W/kg; SAR(10 g) = 0.819 W/kg

Maximum value of SAR (measured) = 1.34 W/kg



Impedance Measurement Plot for Head TSL



DASY5 Validation Report for Body TSL

Date: 19.02.2013

Test Laboratory: SPEAG, Zürich, Switzerland

DUT: Dipole 450 MHz; Type: D450V2; Serial: D450V2 - SN:1021

Communication System: CW; Frequency: 450 MHz

Medium parameters used: $f = 450$ MHz; $\sigma = 0.94$ S/m; $\epsilon_r = 57$; $\rho = 1000$ kg/m³

Phantom section: Flat Section

Measurement Standard: DASY5 (IEEE/IEC/ANSI C63.19-2007)

DASY52 Configuration:

- Probe: ET3DV6 - SN1507; ConvF(7.03, 7.03, 7.03); Calibrated: 28.12.2012;
- Sensor-Surface: 4mm (Mechanical Surface Detection)
- Electronics: DAE4 Sn654; Calibrated: 18.04.2012
- Phantom: Flat Phantom 4.4 ; Type: Flat Phantom 4.4; Serial: 1002
- DASY52 52.8.5(1059); SEMCAD X 14.6.8(7028)

Dipole Calibration for Body Tissue/d=15mm, Pin=250mW/Zoom Scan (7x7x7)/Cube 0:

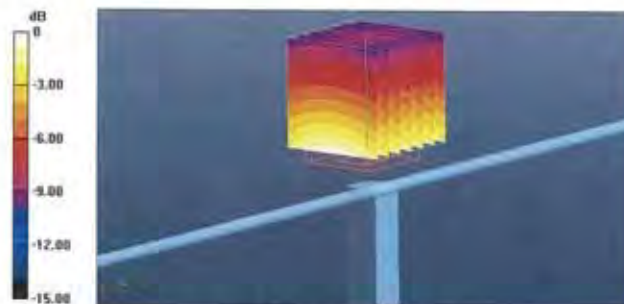
Measurement grid: dx=5mm, dy=5mm, dz=5mm

Reference Value = 40.211 V/m; Power Drift = -0.03 dB

Peak SAR (extrapolated) = 1.87 W/kg

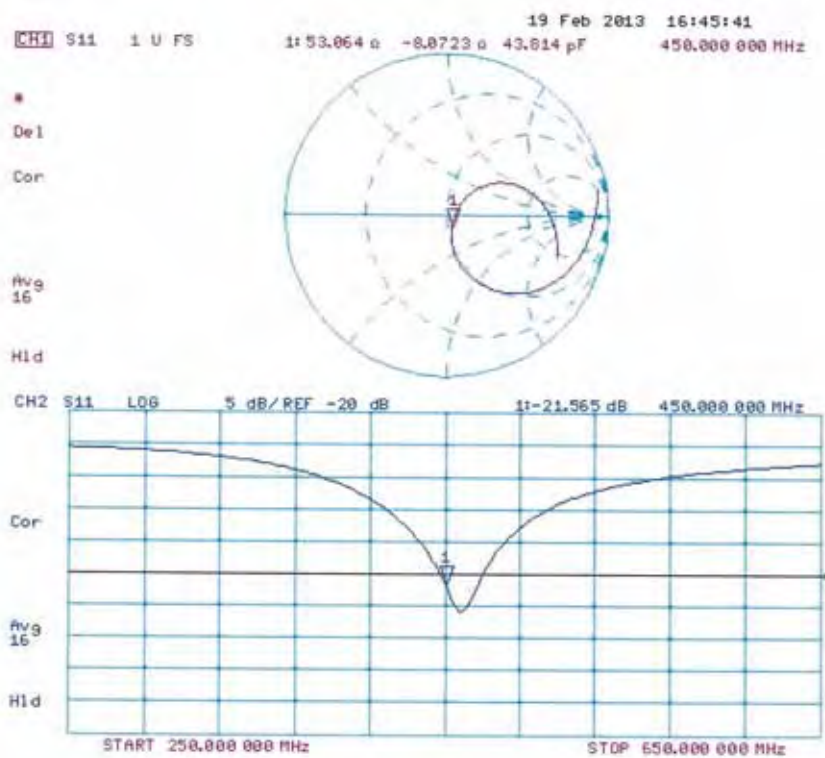
SAR(1 g) = 1.19 W/kg; SAR(10 g) = 0.786 W/kg

Maximum value of SAR (measured) = 1.28 W/kg



0 dB = 1.28 W/kg = 1.07 dBW/kg

Impedance Measurement Plot for Body TSL



**Calibration Laboratory of
Schmid & Partner
Engineering AG**
Zeughausstrasse 43, 8004 Zurich, Switzerland



S Schweizerischer Kalibrierdienst
C Service suisse d'étalonnage
S Servizio svizzero di taratura
S Swiss Calibration Service

Accredited by the Swiss Accreditation Service (SAS)
The Swiss Accreditation Service is one of the signatories to the EA
Multilateral Agreement for the recognition of calibration certificates

Accreditation No.: **SCS 108**

Client **ATL (Auden)**

Certificate No: **EX3-3519_Feb13**

CALIBRATION CERTIFICATE

Object **EX3DV3 - SN:3519**

Calibration procedure(s) **QA CAL-01.v8, QA CAL-12.v7, QA CAL-14.v3, QA CAL-23.v4,
QA CAL-25.v4
Calibration procedure for dosimetric E-field probes**



Calibration date: **February 20, 2013**

This calibration certificate documents the traceability to national standards, which realize the physical units of measurements (SI).
The measurements and the uncertainties with confidence probability are given on the following pages and are part of the certificate.

All calibrations have been conducted in the closed laboratory facility: environment temperature $(22 \pm 3)^\circ\text{C}$ and humidity $< 70\%$.

Calibration Equipment used (M&TE critical for calibration)

Primary Standards	ID	Cal Date (Certificate No.)	Scheduled Calibration
Power meter E4419B	GB41293874	29-Mar-12 (No. 217-01508)	Apr-13
Power sensor E4412A	MY41498067	29-Mar-12 (No. 217-01508)	Apr-13
Reference 3 dB Attenuator	SN: S5054 (3c)	27-Mar-12 (No. 217-01531)	Apr-13
Reference 20 dB Attenuator	SN: S5086 (20b)	27-Mar-12 (No. 217-01529)	Apr-13
Reference 30 dB Attenuator	SN: S5129 (30b)	27-Mar-12 (No. 217-01532)	Apr-13
Reference Probe ES3DV2	SN: 3013	28-Dec-12 (No. ES3-3013_Dec12)	Dec-13
DAE4	SN: 660	31-Jan-13 (No. DAE4-660_Jan13)	Jan-13
Secondary Standards	ID	Check Date (in house)	Scheduled Check
RF generator HP 8648C	US3642U01700	4-Aug-99 (in house check Apr-11)	In house check: Apr-13
Network Analyzer HP 8753E	US37390585	18-Oct-01 (in house check Oct-12)	In house check: Oct-13

	Name	Function	Signature
Calibrated by:	Jeton Kastrati	Laboratory Technician	
Approved by:	Katja Pokovic	Technical Manager	
Issued: February 22, 2013			
This calibration certificate shall not be reproduced except in full without written approval of the laboratory.			

Certificate No: EX3-3519_Feb13

Page 1 of 11

**Calibration Laboratory of
Schmid & Partner
Engineering AG**
Zeughausstrasse 43, 8004 Zurich, Switzerland



S Schweizerischer Kalibrierdienst
S Service suisse d'étalonnage
C Servizio svizzero di taratura
S Swiss Calibration Service

Accredited by the Swiss Accreditation Service (SAS)
The Swiss Accreditation Service is one of the signatories to the EA
Multilateral Agreement for the recognition of calibration certificates

Accreditation No.: **SCS 108**

Glossary:

TSL	tissue simulating liquid
NORM _{x,y,z}	sensitivity in free space
ConvF	sensitivity in TSL / NORM _{x,y,z}
DCP	diode compression point
CF	crest factor (1/duty_cycle) of the RF signal
A, B, C, D	modulation dependent linearization parameters
Polarization φ	φ rotation around probe axis
Polarization ϑ	ϑ rotation around an axis that is in the plane normal to probe axis (at measurement center), i.e., $\vartheta = 0$ is normal to probe axis

Calibration is Performed According to the Following Standards:

- IEEE Std 1528-2003, "IEEE Recommended Practice for Determining the Peak Spatial-Averaged Specific Absorption Rate (SAR) in the Human Head from Wireless Communications Devices: Measurement Techniques", December 2003
- IEC 62209-1, "Procedure to measure the Specific Absorption Rate (SAR) for hand-held devices used in close proximity to the ear (frequency range of 300 MHz to 3 GHz)", February 2005

Methods Applied and Interpretation of Parameters:

- NORM_{x,y,z}**: Assessed for E-field polarization $\vartheta = 0$ ($f \leq 900$ MHz in TEM-cell; $f > 1800$ MHz: R22 waveguide). NORM_{x,y,z} are only intermediate values, i.e., the uncertainties of NORM_{x,y,z} does not affect the E²-field uncertainty inside TSL (see below ConvF).
- NORM(f)_{x,y,z}** = NORM_{x,y,z} * frequency_response (see Frequency Response Chart). This linearization is implemented in DASY4 software versions later than 4.2. The uncertainty of the frequency response is included in the stated uncertainty of ConvF.
- DCP_{x,y,z}**: DCP are numerical linearization parameters assessed based on the data of power sweep with CW signal (no uncertainty required). DCP does not depend on frequency nor media.
- PAR**: PAR is the Peak to Average Ratio that is not calibrated but determined based on the signal characteristics
- A_{x,y,z}; B_{x,y,z}; C_{x,y,z}; D_{x,y,z}; VR_{x,y,z}**: A, B, C, D are numerical linearization parameters assessed based on the data of power sweep for specific modulation signal. The parameters do not depend on frequency nor media. VR is the maximum calibration range expressed in RMS voltage across the diode.
- ConvF and Boundary Effect Parameters**: Assessed in flat phantom using E-field (or Temperature Transfer Standard for $f \leq 800$ MHz) and inside waveguide using analytical field distributions based on power measurements for $f > 800$ MHz. The same setups are used for assessment of the parameters applied for boundary compensation (alpha, depth) of which typical uncertainty values are given. These parameters are used in DASY4 software to improve probe accuracy close to the boundary. The sensitivity in TSL corresponds to NORM_{x,y,z} * ConvF whereby the uncertainty corresponds to that given for ConvF. A frequency dependent ConvF is used in DASY version 4.4 and higher which allows extending the validity from ± 50 MHz to ± 100 MHz.
- Spherical isotropy (3D deviation from isotropy)**: in a field of low gradients realized using a flat phantom exposed by a patch antenna.
- Sensor Offset**: The sensor offset corresponds to the offset of virtual measurement center from the probe tip (on probe axis). No tolerance required.



EX3DV3 – SN:3519

February 20, 2013

Probe EX3DV3

SN:3519

Manufactured: March 8, 2004
Calibrated: February 20, 2013

Calibrated for DASY/EASY Systems
(Note: non-compatible with DASY2 system!)

DASY/EASY - Parameters of Probe: EX3DV3 - SN:3519

Basic Calibration Parameters

	Sensor X	Sensor Y	Sensor Z	Unc (k=2)
Norm ($\mu\text{V}/(\text{V}/\text{m})^2$) ^A	0.82	0.70	0.72	$\pm 10.1 \%$
DCP (mV) ^B	100.2	99.1	102.5	

Modulation Calibration Parameters

UID	Communication System Name		A dB	B dB $\sqrt{\mu\text{V}}$	C	D dB	VR mV	Unc ^C (k=2)
0	CW	X	0.0	0.0	1.0	0.00	112.7	$\pm 3.0 \%$
		Y	0.0	0.0	1.0		116.6	
		Z	0.0	0.0	1.0		142.1	

The reported uncertainty of measurement is stated as the standard uncertainty of measurement multiplied by the coverage factor $k=2$, which for a normal distribution corresponds to a coverage probability of approximately 95%.

^A The uncertainties of NormX,Y,Z do not affect the E^2 -field uncertainty inside TSL (see Pages 5 and 6).

^B Numerical linearization parameter; uncertainty not required.

^C Uncertainty is determined using the max. deviation from linear response applying rectangular distribution and is expressed for the square of the field value.

DASY/EASY - Parameters of Probe: EX3DV3 - SN:3519

Calibration Parameter Determined in Head Tissue Simulating Media

f (MHz) ^c	Relative Permittivity ^f	Conductivity (S/m) ^f	ConvF X	ConvF Y	ConvF Z	Alpha	Depth (mm)	Unct. (k=2)
450	43.5	0.87	10.80	10.80	10.80	0.13	1.43	± 13.4 %
750	41.9	0.89	11.12	11.12	11.12	0.18	1.41	± 12.0 %
835	41.5	0.90	10.73	10.73	10.73	0.12	1.92	± 12.0 %
900	41.5	0.97	10.72	10.72	10.72	0.31	0.90	± 12.0 %
1750	40.1	1.37	9.03	9.03	9.03	0.30	0.91	± 12.0 %
1810	40.0	1.40	8.85	8.85	8.85	0.46	0.72	± 12.0 %
1900	40.0	1.40	8.79	8.79	8.79	0.34	0.83	± 12.0 %
2000	40.0	1.40	8.76	8.76	8.76	0.38	0.83	± 12.0 %
2100	39.8	1.49	8.93	8.93	8.93	0.76	0.57	± 12.0 %
2300	39.5	1.67	8.40	8.40	8.40	0.39	0.80	± 12.0 %
2450	39.2	1.80	7.94	7.94	7.94	0.31	0.92	± 12.0 %
2600	39.0	1.96	7.69	7.69	7.69	0.36	0.89	± 12.0 %
5200	36.0	4.66	4.99	4.99	4.99	0.41	1.80	± 13.1 %
5300	35.9	4.76	4.86	4.86	4.86	0.42	1.80	± 13.1 %
5500	35.6	4.96	4.51	4.51	4.51	0.45	1.80	± 13.1 %
5600	35.5	5.07	4.31	4.31	4.31	0.45	1.80	± 13.1 %
5800	35.3	5.27	4.28	4.28	4.28	0.48	1.80	± 13.1 %

^c Frequency validity of ± 100 MHz only applies for DASY v4.4 and higher (see Page 2), else it is restricted to ± 50 MHz. The uncertainty is the RSS of the ConvF uncertainty at calibration frequency and the uncertainty for the indicated frequency band.

^f At frequencies below 3 GHz, the validity of tissue parameters (ϵ and σ) can be relaxed to ± 10% if liquid compensation formula is applied to measured SAR values. At frequencies above 3 GHz, the validity of tissue parameters (ϵ and σ) is restricted to ± 5%. The uncertainty is the RSS of the ConvF uncertainty for indicated target tissue parameters.

DASY/EASY - Parameters of Probe: EX3DV3 - SN:3519

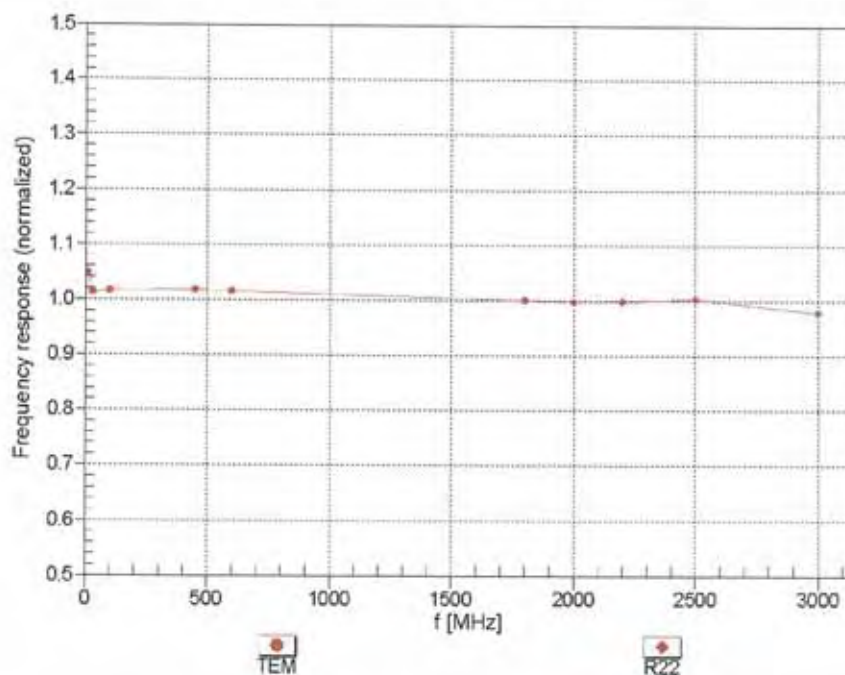
Calibration Parameter Determined in Body Tissue Simulating Media

f (MHz) ^C	Relative Permittivity ^F	Conductivity (S/m) ^F	ConvF X	ConvF Y	ConvF Z	Alpha	Depth (mm)	Unct. (k=2)
450	56.7	0.94	11.79	11.79	11.79	0.05	1.25	± 13.4 %
750	55.5	0.96	10.78	10.78	10.78	0.42	0.86	± 12.0 %
835	55.2	0.97	10.56	10.56	10.56	0.20	1.37	± 12.0 %
900	55.0	1.05	10.46	10.46	10.46	0.36	0.93	± 12.0 %
1750	53.4	1.49	8.99	8.99	8.99	0.49	0.69	± 12.0 %
1810	53.3	1.52	8.79	8.79	8.79	0.54	0.68	± 12.0 %
1900	53.3	1.52	8.58	8.58	8.58	0.26	1.00	± 12.0 %
2000	53.3	1.52	8.61	8.61	8.61	0.38	0.80	± 12.0 %
2100	53.2	1.62	8.72	8.72	8.72	0.24	1.09	± 12.0 %
2300	52.9	1.81	8.13	8.13	8.13	0.57	0.67	± 12.0 %
2450	52.7	1.95	7.88	7.88	7.88	0.80	0.50	± 12.0 %
2600	52.5	2.16	7.61	7.61	7.61	0.62	0.50	± 12.0 %
3500	51.3	3.31	7.14	7.14	7.14	0.33	1.24	± 13.1 %
5200	49.0	5.30	4.49	4.49	4.49	0.50	1.90	± 13.1 %
5300	48.9	5.42	4.27	4.27	4.27	0.50	1.90	± 13.1 %
5500	48.6	5.65	3.96	3.96	3.96	0.55	1.90	± 13.1 %
5600	48.5	5.77	3.63	3.63	3.63	0.60	1.90	± 13.1 %
5800	48.2	6.00	3.88	3.88	3.88	0.59	1.90	± 13.1 %

^C Frequency validity of ± 100 MHz only applies for DASY v4.4 and higher (see Page 2), else it is restricted to ± 50 MHz. The uncertainty is the RSS of the ConvF uncertainty at calibration frequency and the uncertainty for the indicated frequency band.

^F At frequencies below 3 GHz, the validity of tissue parameters (ϵ and σ) can be relaxed to ± 10% if liquid compensation formula is applied to measured SAR values. At frequencies above 3 GHz, the validity of tissue parameters (ϵ and σ) is restricted to ± 5%. The uncertainty is the RSS of the ConvF uncertainty for indicated target tissue parameters.

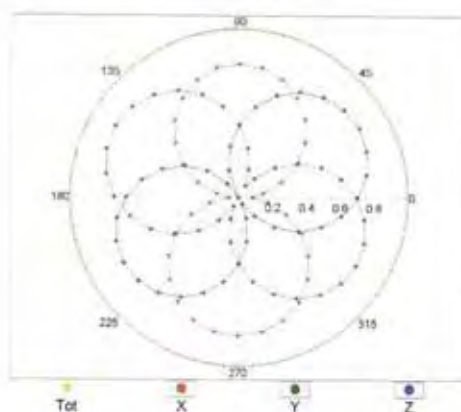
Frequency Response of E-Field (TEM-Cell:ifi110 EXX, Waveguide: R22)



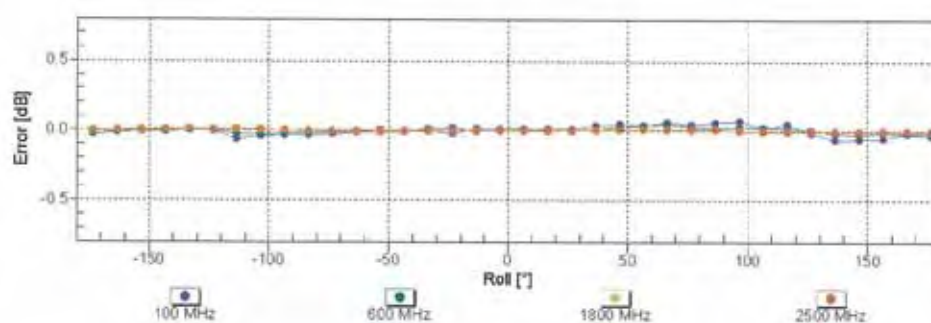
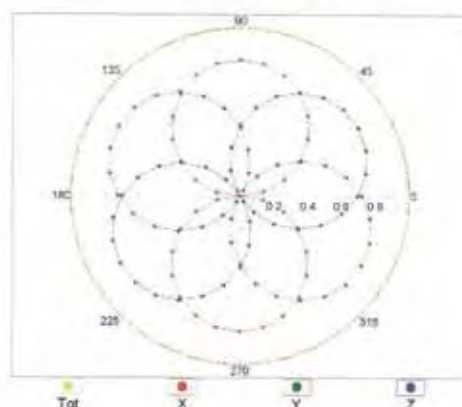
Uncertainty of Frequency Response of E-field: $\pm 6.3\%$ ($k=2$)

Receiving Pattern (ϕ), $\theta = 0^\circ$

f=600 MHz,TEM

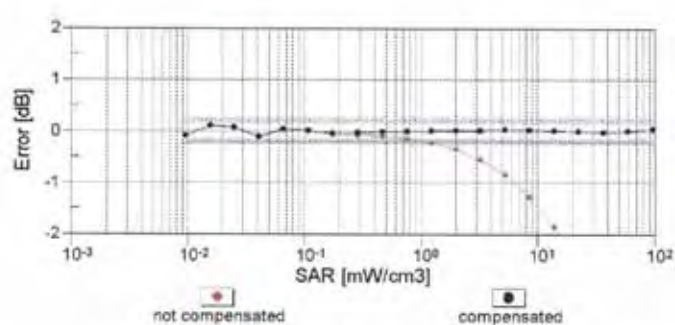
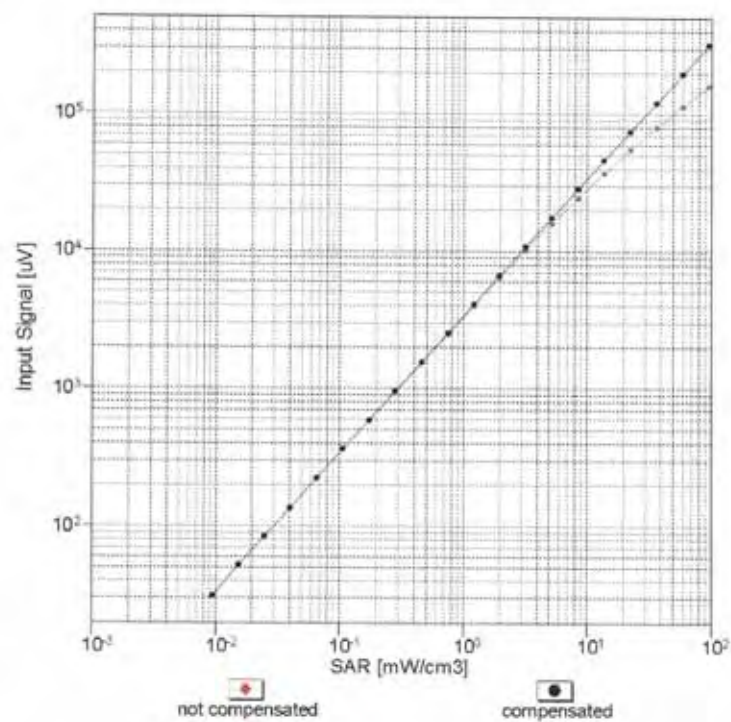


f=1800 MHz,R22



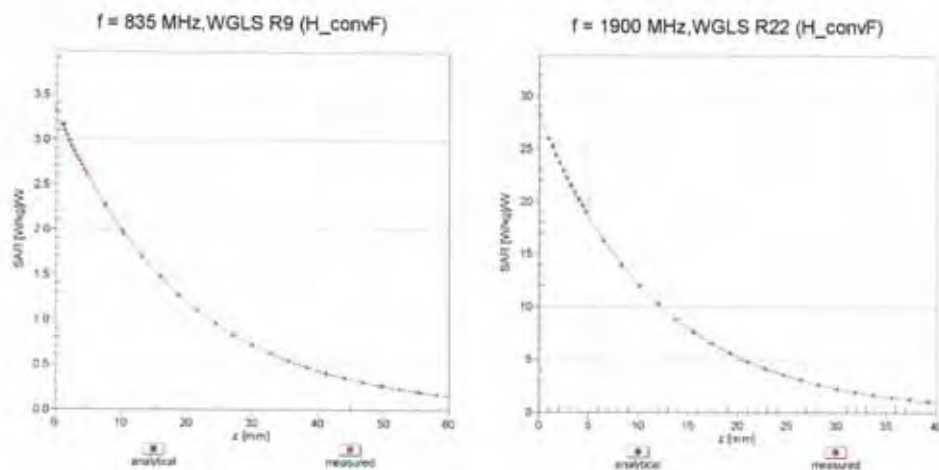
Uncertainty of Axial Isotropy Assessment: $\pm 0.5\%$ ($k=2$)

Dynamic Range $f(\text{SAR}_{\text{head}})$ (TEM cell , $f = 900 \text{ MHz}$)

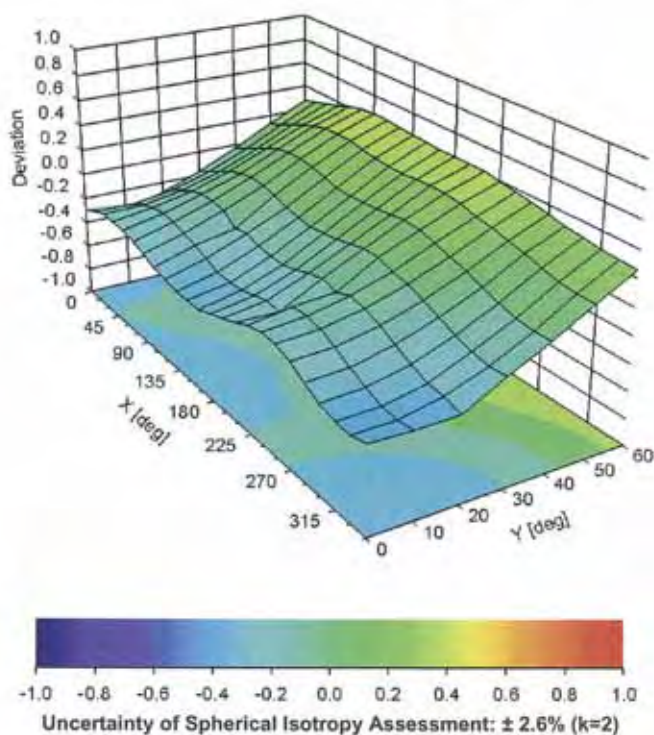


Uncertainty of Linearity Assessment: $\pm 0.6\%$ ($k=2$)

Conversion Factor Assessment



Deviation from Isotropy in Liquid Error (ϕ , θ), f = 900 MHz





EX3DV3- SN:3519

February 20, 2013

DASY/EASY - Parameters of Probe: EX3DV3 - SN:3519

Other Probe Parameters

Sensor Arrangement	Triangular
Connector Angle (°)	-93.4
Mechanical Surface Detection Mode	enabled
Optical Surface Detection Mode	disabled
Probe Overall Length	337 mm
Probe Body Diameter	10 mm
Tip Length	9 mm
Tip Diameter	2.5 mm
Probe Tip to Sensor X Calibration Point	1 mm
Probe Tip to Sensor Y Calibration Point	1 mm
Probe Tip to Sensor Z Calibration Point	1 mm
Recommended Measurement Distance from Surface	2 mm



Calibration Laboratory of
Schmid & Partner
Engineering AG
Zeughausstrasse 43, 8004 Zurich, Switzerland



S Schweizerischer Kalibrierdienst
C Service suisse d'étalonnage
S Servizio svizzero di taratura
S Swiss Calibration Service

Accredited by the Swiss Accreditation Service (SAS)
The Swiss Accreditation Service is one of the signatories to the EA
Multilateral Agreement for the recognition of calibration certificates

Accreditation No.: **SCS 108**

Client **ATL (Auden)**

Certificate No: **DAE4-779_Feb13**

CALIBRATION CERTIFICATE

Object **DAE4 - SD 000 D04 BJ - SN: 779**

Calibration procedure(s) **QA CAL-06.v25**
Calibration procedure for the data acquisition electronics (DAE)

Calibration date: **February 13, 2013**

This calibration certificate documents the traceability to national standards, which realize the physical units of measurements (SI).
The measurements and the uncertainties with confidence probability are given on the following pages and are part of the certificate.

All calibrations have been conducted in the closed laboratory facility: environment temperature $(22 \pm 3)^{\circ}\text{C}$ and humidity $< 70\%$.

Calibration Equipment used (M&TE critical for calibration)

Primary Standards	ID #	Cal Date (Certificate No.)	Scheduled Calibration
Keithley Multimeter Type 2001	SN: 0810278	02-Oct-12 (No:12728)	Oct-13
Secondary Standards	ID #	Check Date (in house)	Scheduled Check
Auto DAE Calibration Unit Calibrator Box V2.1	SE UWS 053 AA 1001	07-Jan-13 (in house check)	In house check: Jan-14
	SE UMS 006 AA 1002	07-Jan-13 (in house check)	In house check: Jan-14

Calibrated by:	Name Eric Hainfeld	Function Technician	Signature
Approved by:	Fin Bornholt	Deputy Technical Manager	

Issued: February 13, 2013

This calibration certificate shall not be reproduced except in full without written approval of the laboratory.

Certificate No: DAE4-779_Feb13

Page 1 of 5

**Calibration Laboratory of
Schmid & Partner
Engineering AG**
Zeughausstrasse 43, 8004 Zurich, Switzerland



S Schweizerischer Kalibrierdienst
C Service suisse d'étalonnage
S Servizio svizzero di taratura
S Swiss Calibration Service

Accredited by the Swiss Accreditation Service (SAS)
The Swiss Accreditation Service is one of the signatories to the EA
Multilateral Agreement for the recognition of calibration certificates

Accreditation No.: **SCS 108**

Glossary

DAE data acquisition electronics
Connector angle information used in DASY system to align probe sensor X to the robot coordinate system.

Methods Applied and Interpretation of Parameters

- **DC Voltage Measurement:** Calibration Factor assessed for use in DASY system by comparison with a calibrated instrument traceable to national standards. The figure given corresponds to the full scale range of the voltmeter in the respective range.
- **Connector angle:** The angle of the connector is assessed measuring the angle mechanically by a tool inserted. Uncertainty is not required.
- The following parameters as documented in the Appendix contain technical information as a result from the performance test and require no uncertainty.
 - **DC Voltage Measurement Linearity:** Verification of the Linearity at +10% and -10% of the nominal calibration voltage. Influence of offset voltage is included in this measurement.
 - **Common mode sensitivity:** Influence of a positive or negative common mode voltage on the differential measurement.
 - **Channel separation:** Influence of a voltage on the neighbor channels not subject to an input voltage.
 - **AD Converter Values with inputs shorted:** Values on the internal AD converter corresponding to zero input voltage
 - **Input Offset Measurement:** Output voltage and statistical results over a large number of zero voltage measurements.
 - **Input Offset Current:** Typical value for information; Maximum channel input offset current, not considering the input resistance.
 - **Input resistance:** Typical value for information: DAE input resistance at the connector, during internal auto-zeroing and during measurement.
 - **Low Battery Alarm Voltage:** Typical value for information. Below this voltage, a battery alarm signal is generated.
 - **Power consumption:** Typical value for information. Supply currents in various operating modes.



DC Voltage Measurement

A/D - Converter Resolution nominal

High Range: 1LSB = 6.1 μ V, full range = -100...+300 mV

Low Range: 1LSB = 61nV, full range = -1.....+3mV

DASY measurement parameters: Auto Zero Time: 3 sec; Measuring time: 3 sec

Calibration Factors	X	Y	Z
High Range	404.452 \pm 0.02% (k=2)	403.694 \pm 0.02% (k=2)	403.914 \pm 0.02% (k=2)
Low Range	3.96902 \pm 1.55% (k=2)	3.97887 \pm 1.55% (k=2)	3.99319 \pm 1.55% (k=2)

Connector Angle

Connector Angle to be used in DASY system	156.5 ° \pm 1 °
---	-------------------

Appendix

1. DC Voltage Linearity

High Range	Reading (μV)	Difference (μV)	Error (%)
Channel X + Input	189996.96	1.92	0.00
Channel X + Input	20001.89	1.69	0.01
Channel X - Input	-19996.92	3.97	-0.02
Channel Y + Input	199996.16	1.24	0.00
Channel Y + Input	19999.20	-0.93	-0.00
Channel Y - Input	-20000.26	0.76	-0.00
Channel Z + Input	199997.40	2.46	0.00
Channel Z + Input	20001.63	1.50	0.01
Channel Z - Input	-19998.30	2.69	-0.01

Low Range	Reading (μV)	Difference (μV)	Error (%)
Channel X + Input	2001.21	0.58	0.03
Channel X + Input	201.35	0.31	0.15
Channel X - Input	-198.61	0.26	-0.13
Channel Y + Input	2000.66	0.18	0.01
Channel Y + Input	200.39	-0.58	-0.29
Channel Y - Input	-199.01	0.03	-0.01
Channel Z + Input	2000.62	0.22	0.01
Channel Z + Input	200.34	-0.52	-0.26
Channel Z - Input	-199.81	-0.83	0.42

2. Common mode sensitivity

DASY measurement parameters: Auto Zero Time: 3 sec; Measuring time: 3 sec

	Common mode Input Voltage (mV)	High Range Average Reading (μV)	Low Range Average Reading (μV)
Channel X	200	-2.78	-4.73
	-200	5.70	4.22
Channel Y	200	14.58	13.79
	-200	-15.41	-15.51
Channel Z	200	2.91	3.09
	-200	-4.86	-4.74

3. Channel separation

DASY measurement parameters: Auto Zero Time: 3 sec; Measuring time: 3 sec

	Input Voltage (mV)	Channel X (μV)	Channel Y (μV)	Channel Z (μV)
Channel X	200	-	-2.01	-3.72
Channel Y	200	10.67	-	-0.58
Channel Z	200	7.80	8.55	-

4. AD-Converter Values with inputs shorted

DASY measurement parameters: Auto Zero Time: 3 sec; Measuring time: 3 sec

	High Range (LSB)	Low Range (LSB)
Channel X	15602	13837
Channel Y	15845	15843
Channel Z	16202	15651

5. Input Offset Measurement

DASY measurement parameters: Auto Zero Time: 3 sec; Measuring time: 3 sec

Input 10M Ω

	Average (μ V)	min. Offset (μ V)	max. Offset (μ V)	Std. Deviation (μ V)
Channel X	0.26	-0.87	2.39	0.52
Channel Y	-0.70	-2.45	1.01	0.66
Channel Z	-0.84	-1.90	0.45	0.44

6. Input Offset Current

Nominal input circuitry offset current on all channels: <25fA

7. Input Resistance (Typical values for information)

	Zeroing (kOhm)	Measuring (MOhm)
Channel X	200	200
Channel Y	200	200
Channel Z	200	200

8. Low Battery Alarm Voltage (Typical values for information)

Typical values	Alarm Level (VDC)
Supply (+ Vcc)	+7.9
Supply (- Vcc)	-7.6

9. Power Consumption (Typical values for information)

Typical values	Switched off (mA)	Stand by (mA)	Transmitting (mA)
Supply (+ Vcc)	+0.01	+6	+14
Supply (- Vcc)	-0.01	-8	-9