

USER'S MANUAL

USB 2.0 6-Port with Bluetooth HUB

BF-4720

1. Introduction

The USB 2.0 6-Port with Bluetooth HUB allows you to attach your USB devices to computer by USB port and communicate with other Bluetooth device. This HUB supports low speed (1.5Mbps), full speed (12Mbps) and high speed (480Mbps).

2. Package Content

- Hardware: USB 2.0 6-Port HUB
- User's Manual
- USB2.0 A-B Cable
- Power Adapter 5V 3.8A

3. Product Features

- USB specification revision 2.0 compliant
- Data transfer rate up to 480Mbps
- Support up to 127 USB devices
- Fully compatible with USB 1.1 devices
- OHCI specification for USB 1.1 compliant
- Three downstream ports (2 external ports and one internal port) support High-speed (480Mbps), Full-speed (12Mbps) or Low-speed (1.5Mbps)
- Support hot swap and wake-up

4. System Requirements

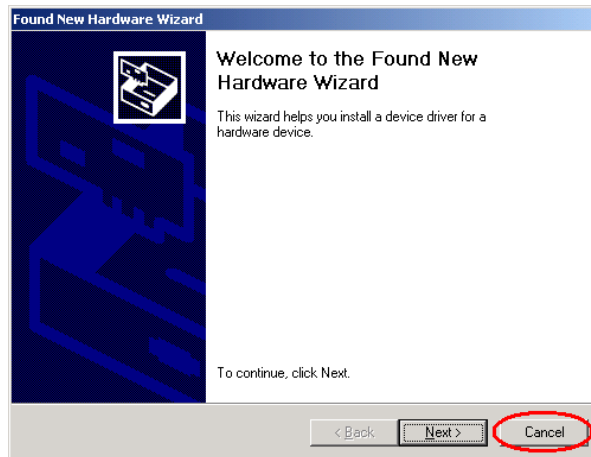
PC

- IBM PC Pentium II 266MHz CPU or higher or compatible system
- Windows[®] 2000, Windows[®] XP

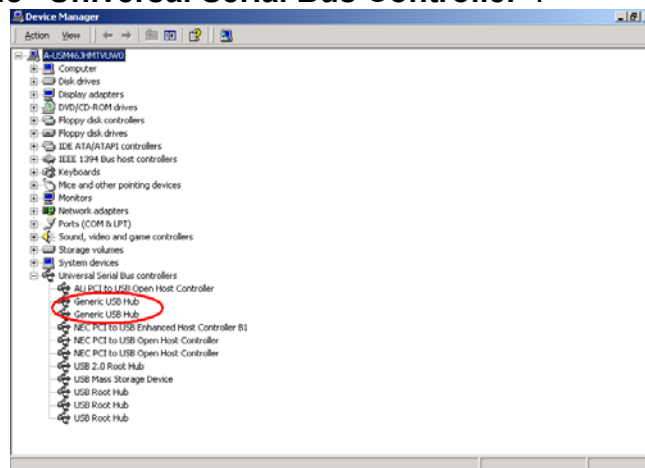
5. Software Installation

5.1 Windows[®] 2000 Driver Installation

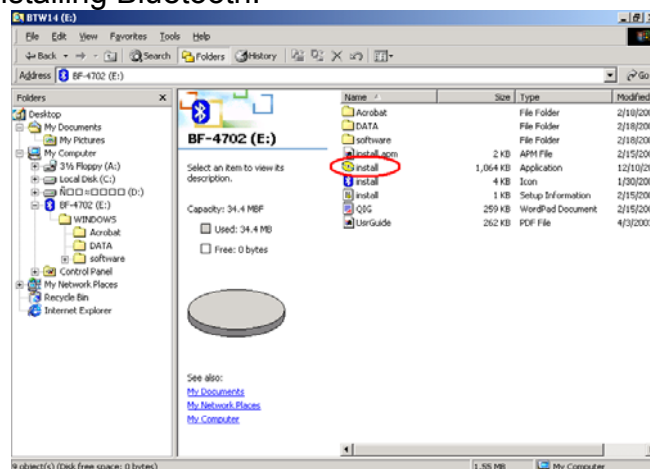
- 5.1.1 Power on the computer, connect the USB 2.0 6-PORT HUB to your computer, Windows[®] will detect a new hardware and pop-up “**Found New Hardware Wizard**” dialog box, click “**Cancel**” to continue.



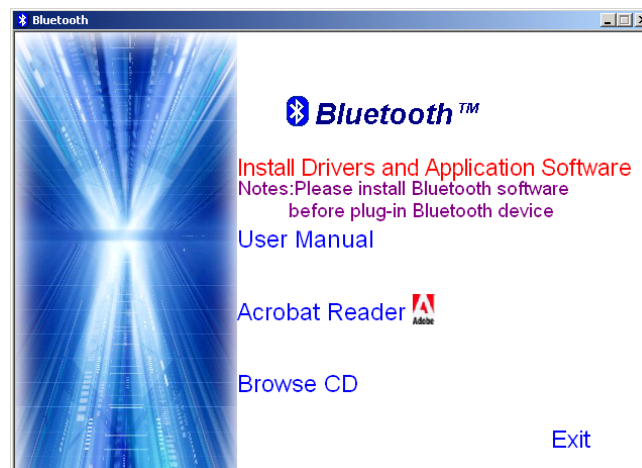
5.1.2 Windows® load HUB driver automatically, after installation is complete, you have to check “**My Computer**”-“**Control Panel**”-“**System**”-“**Device Manager**” and you can see two “**Generic USB Hub**” under the “**Universal Serial Bus Controller**”.



5.1.3 Double click on “**install**” at “E:\BF-4720\WINDOWS\” to start installing Bluetooth.



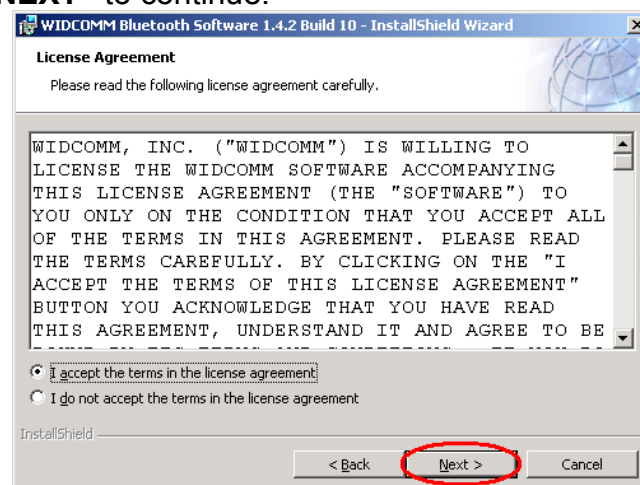
5.1.4 Click on “**Install Drivers and Application Software**” to continue.



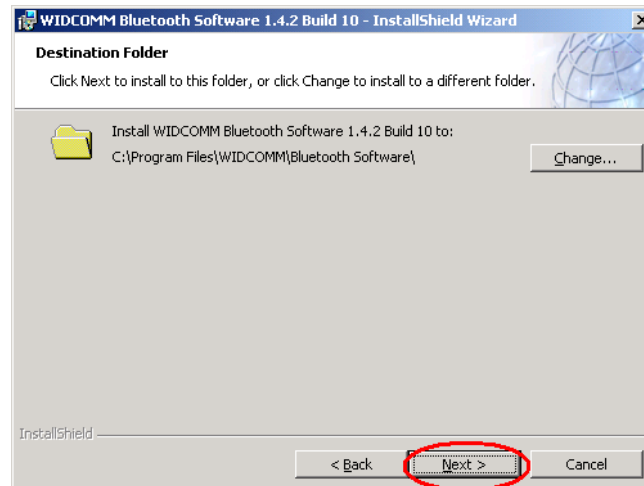
5.1.5 Click **“NEXT”** to continue.



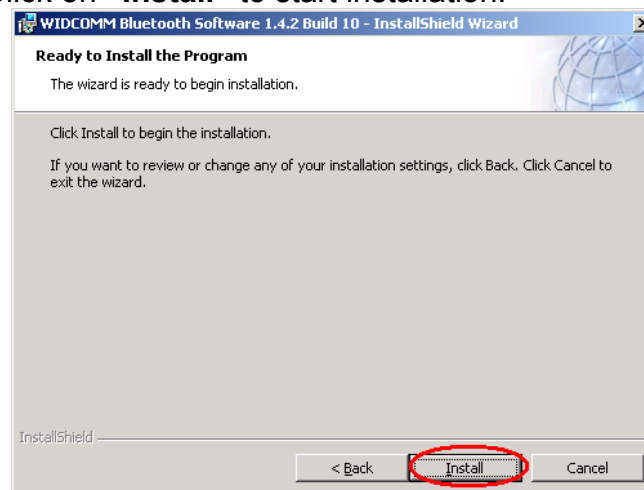
5.1.6 Select **“I accept the terms in the license agreement”** and then click **“NEXT”** to continue.



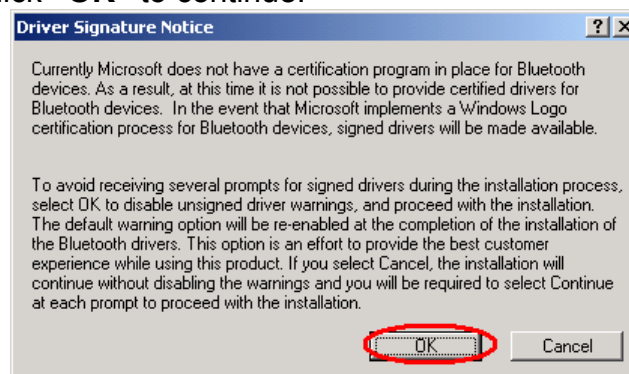
5.1.7 Chose folder to where software will be installed, click **“Next”** to continue.



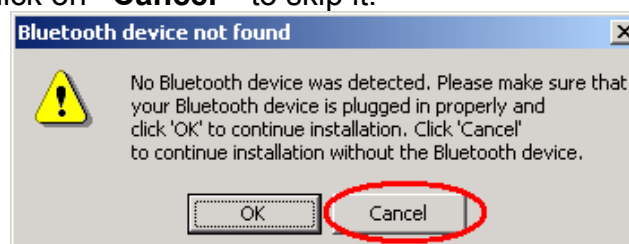
5.1.8 Click on **“Install”** to start installation.



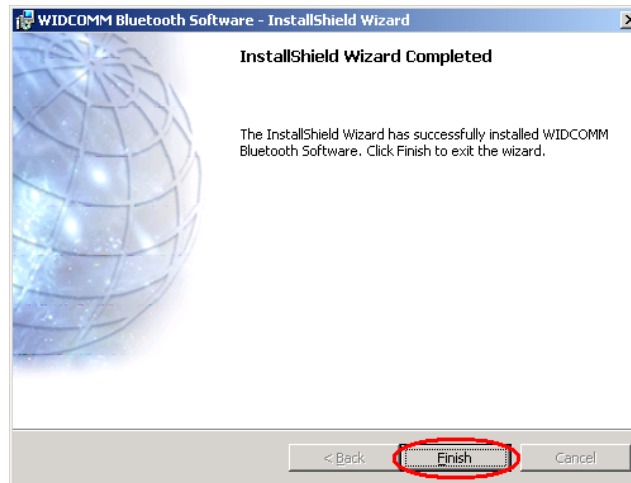
5.1.9 Click **“OK”** to continue.



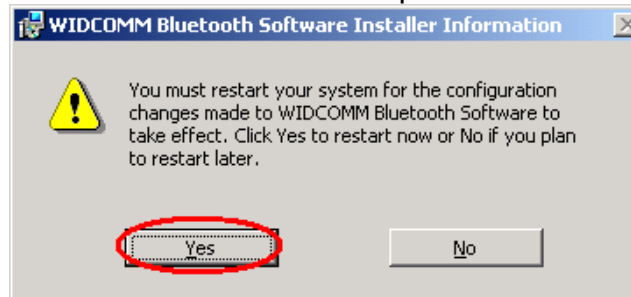
5.1.10 Click on **“Cancel”** to skip it.



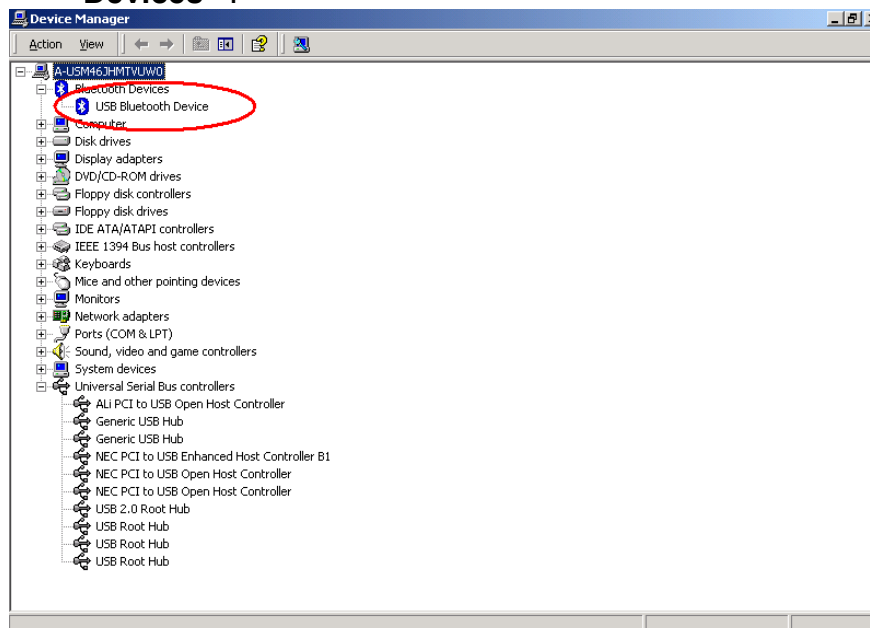
5.1.11 Click on **“Finish”** to end this installation.



5.1.12 Click on **“Yes”** to re-start computer.



5.1.13 After re-start computer, you may check **“My Computer”-“Control Panel”-“ System”-“Device Manager”** and you will find a new created item **“USB Bluetooth Device”** under the **“Bluetooth Devices”**.

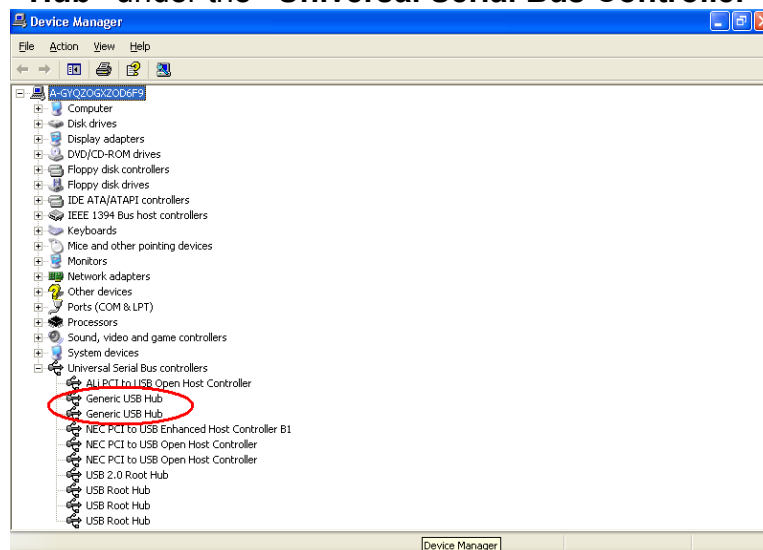


5.2 Windows® XP Driver Installation

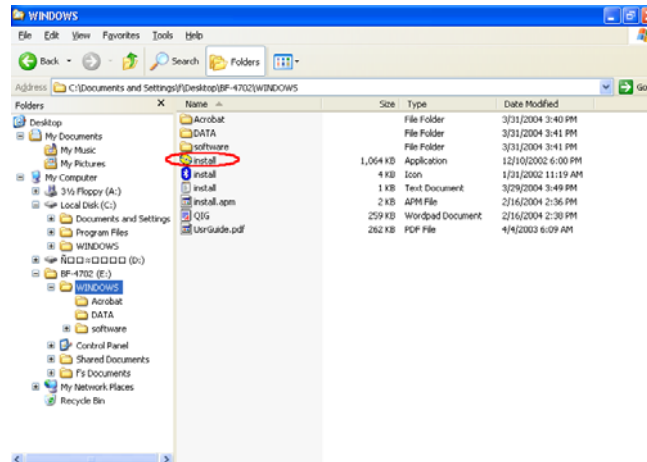
- 5.2.1 Power on the computer, connect the USB 2.0 6-PORT HUB to your computer, Windows® will detect a new hardware and pop-up “**Found New Hardware Wizard**” dialog box, click “**Cancel**” to continue.



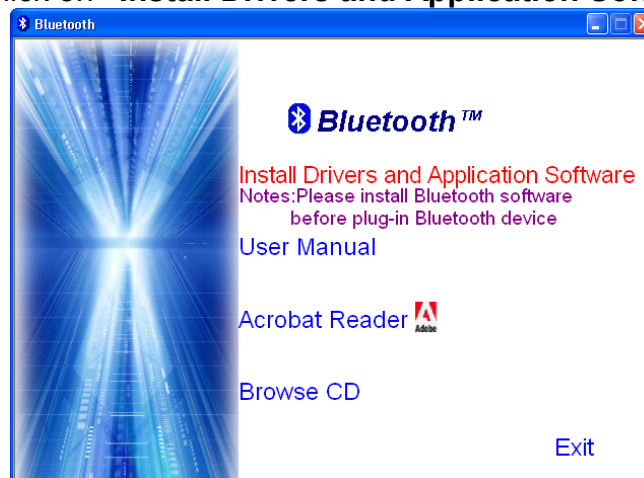
- 5.2.2 Windows® will load HUB driver automatically, after installation is complete, you have to check “**My Computer**”-“**Control Panel**”-“**System**”-“**Device Manager**” and you can see two “**Generic USB Hub**” under the “**Universal Serial Bus Controller**”.



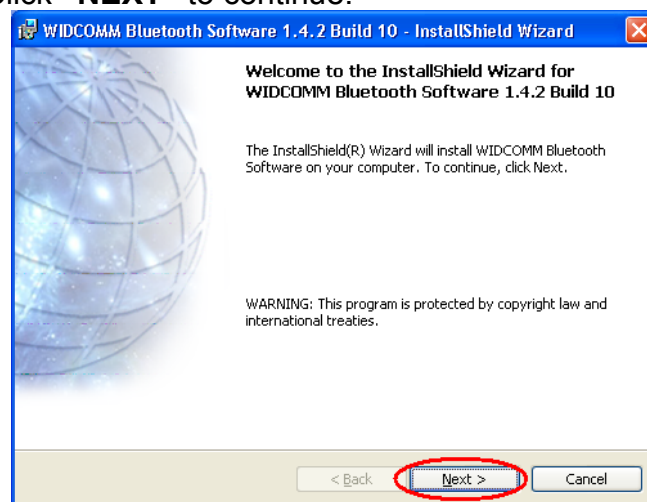
- 5.2.3 Double click on “**install**” at “E:\BF-4720\WINDOWS\” to start installing Bluetooth.



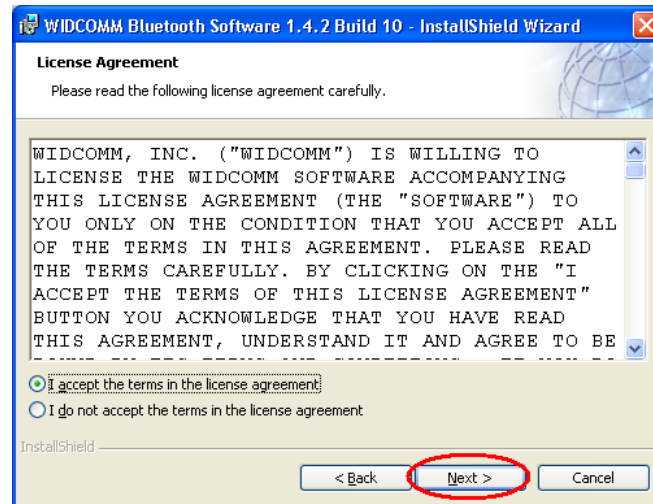
5.2.4 Click on **“Install Drivers and Application Software”** to continue.



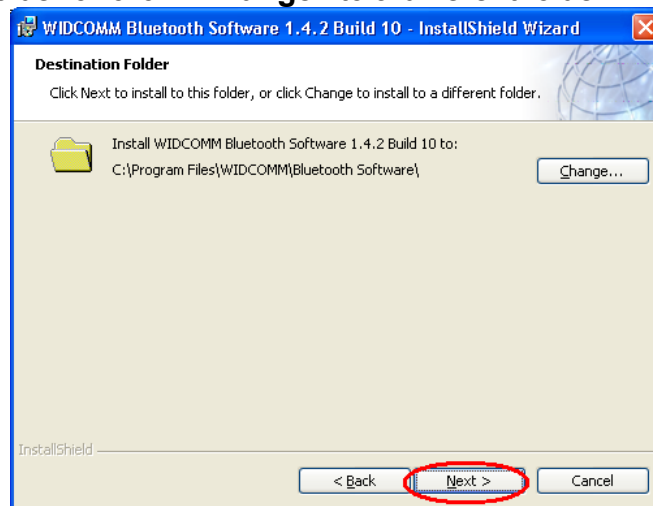
5.2.5 Click **“NEXT”** to continue.



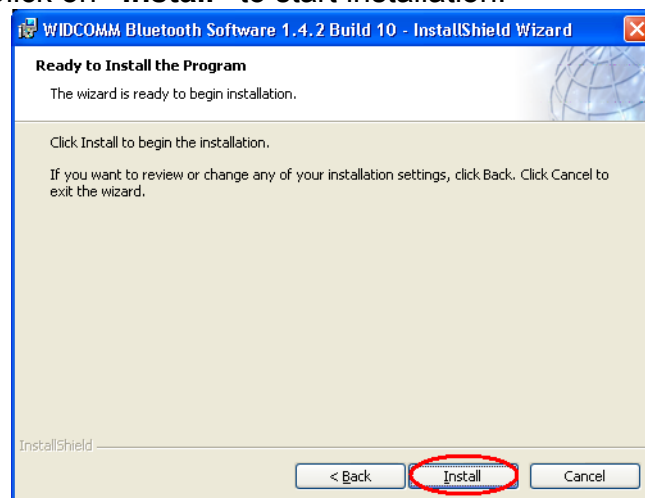
5.2.6 Select **“I accept the terms in the license agreement”** and then click **“NEXT”** to continue.



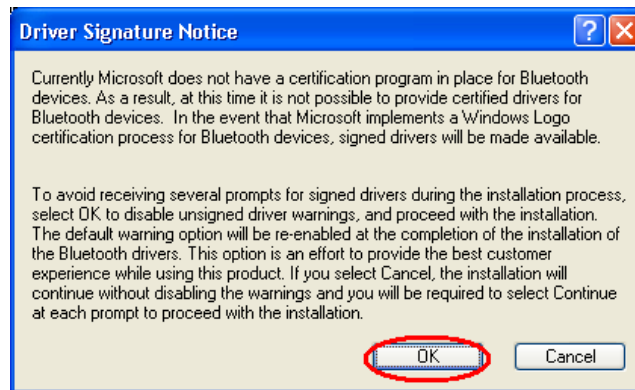
5.2.7 Chose folder to where software will be installed, click **“Next”** to this folder or click **“Change”** to a different folder.



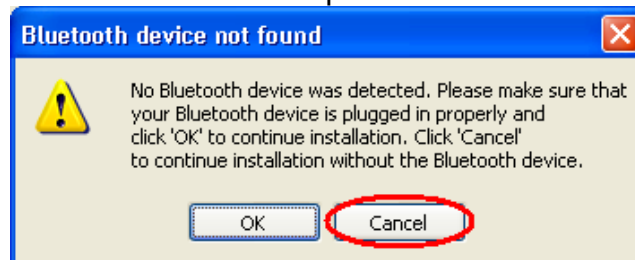
5.2.8 Click on **“Install”** to start installation.



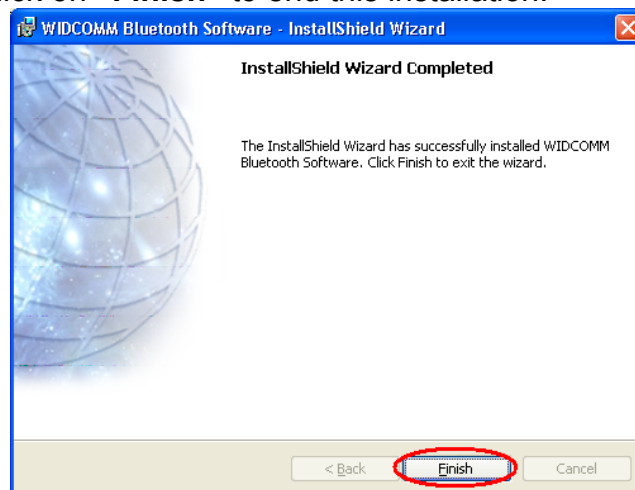
5.2.9 Click **“OK”** to continue.



5.2.10 Click on **"Cancel"** to skip it.



5.2.11 Click on **"Finish"** to end this installation.



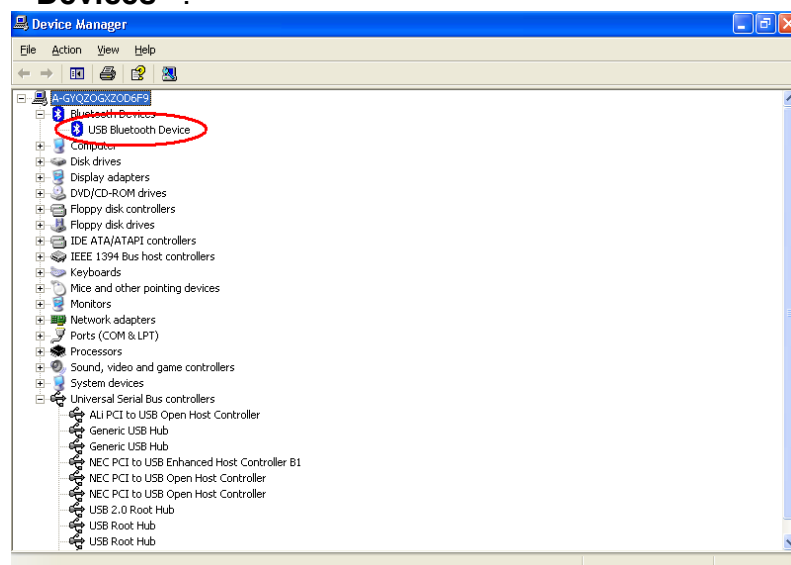
5.2.12 Select **"Install the software automatically"** then click **"Next"**.



5.2.13 Click on **“Finish”** to end this installation.



5.2.14 After re-start computer, you may check **“My Computer”-“Control Panel”-“ System”-“Device Manager”** and you will find a new created item **“USB Bluetooth Device”** under the **“Bluetooth Devices”**.



6. FCC Statement

This device generates and uses radio frequency and may cause interference to radio and television reception if not installed and used properly. This has been tested and found to comply with the limits of a Class B computing device in accordance with the specifications in Part 15 of FCC Rules. These specifications are designed to provide reasonable protection against such interference in a residential installation. However, there is no guarantee that interference will not occur in a particular installation. If this device does cause harmful interference to radio or television reception, which can be determined by plugging the device in and out, the user can try to correct the interference by one or more of the followings:

- Reorient or relocate the receiving antenna.
- Increase the separation between the device and receiver.
- Connect the computer into an outlet on a circuit different from that to which the receiver is connected.
- Consult the dealer or an experienced radio/TV technician for help
-

This Transmitter must not be co-located or operating in conjunction with any other antenna or transmitter.

---This equipment complies with FCC RF radiation exposure limits set forth for an uncontrolled environment.

This equipment should be installed and operated with a minimum distance of 20 centimeters between the radiator and your body.

---Any changes or modifications (including the antennas) made to this device that are not expressly approved by the manufacturer may void the user's authority to operate the equipment.

7. Product Specifications

◆ Standard	USB V2.0
	Bluetooth V1.1
◆ Data Rate	1.5Mbps, 12Mbps, 480Mbps (USB2.0)
	721Kbps (Bluetooth V1.1)
◆ LED indications	Power x1, Port x6
◆ Emission	FCC Class B, CE
◆ Operating Temperature	0°C - 40°C
◆ Operating Humidity	10% - 90%
◆ Power Supply	5V/3.8A

8. Technical Support

If you encounter any technical problem, please contact us through:

Taiwan First line electronics Corp.

**NO. 40, Chung-Shan Road, Tu-Cheng Industrial Zone, Taipei County ,
Taiwan, R.O.C.**

Web site: www.bafo.com.tw

OR

Quality Computer Accessories Inc. NJ

70 Ethel Road West, Unit 1, Piscataway, NJ 08854, USA

Web site: www.bafo.com