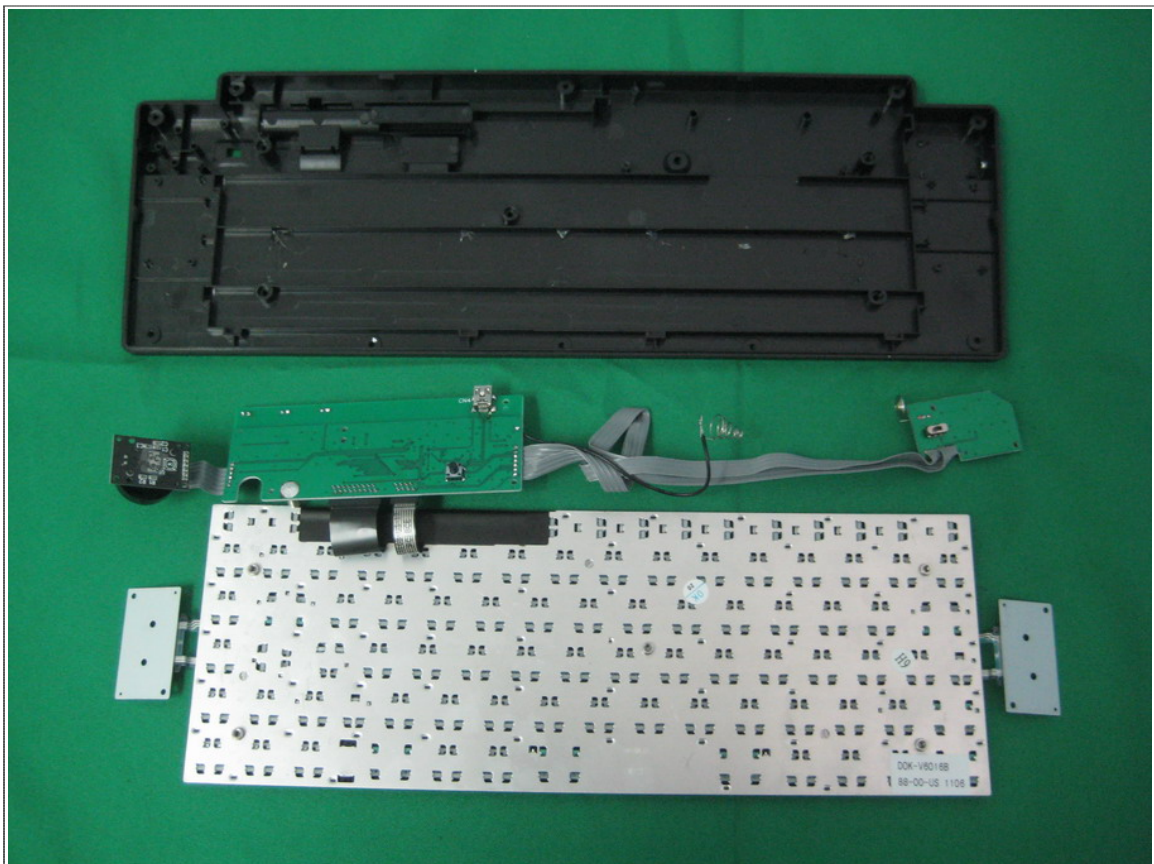


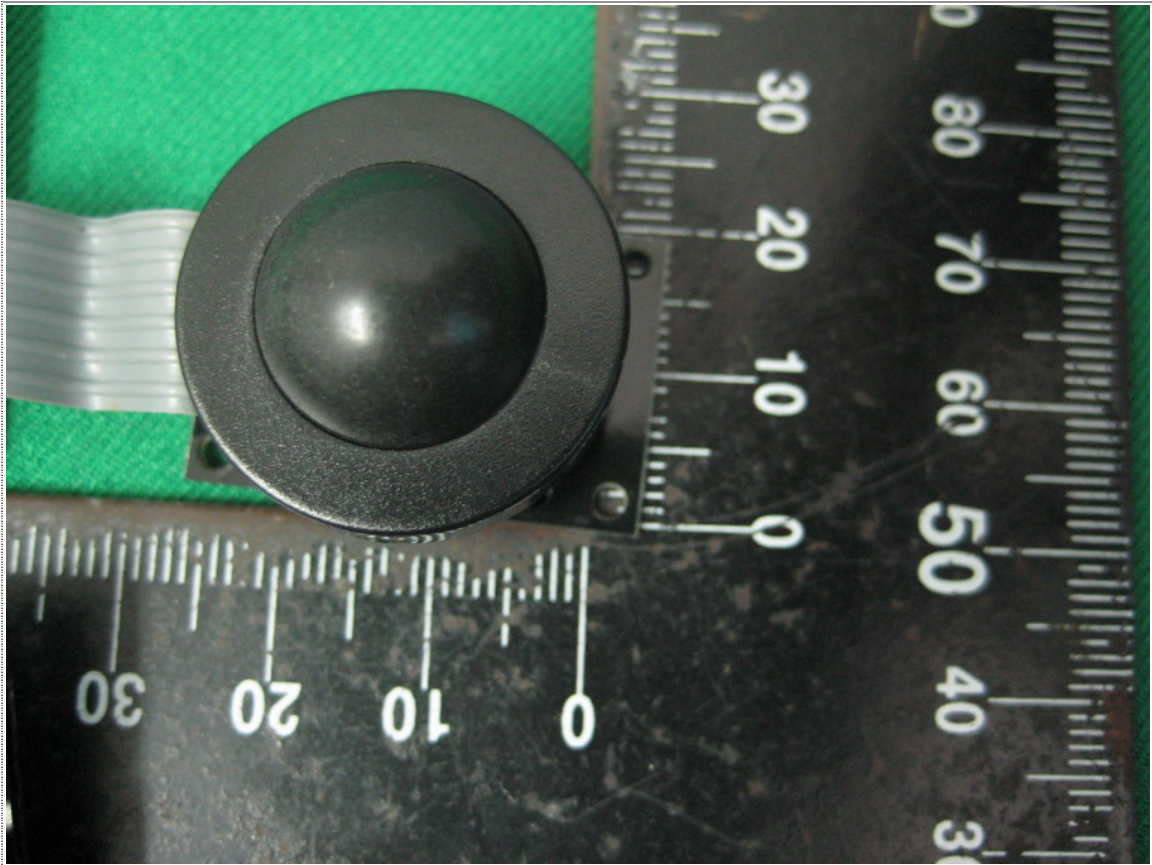


Inner View of EUT-1

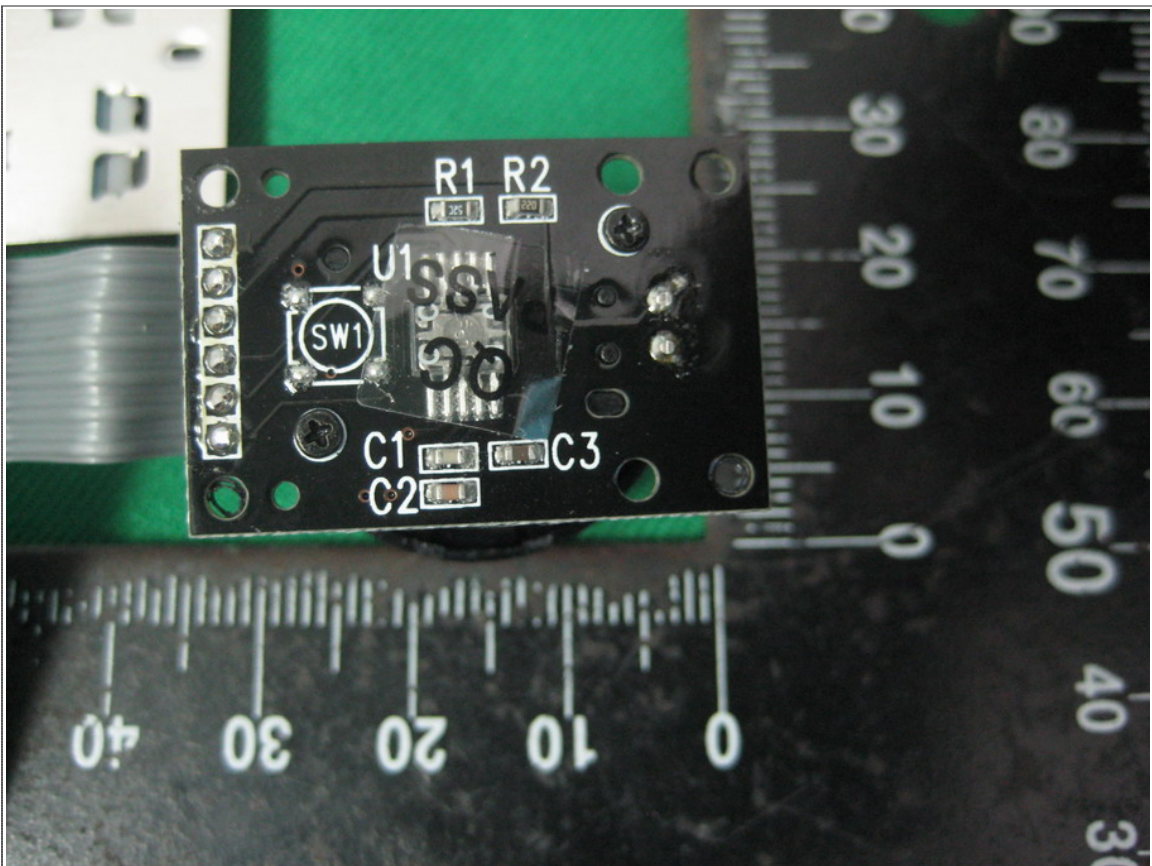


Inner View of EUT-2



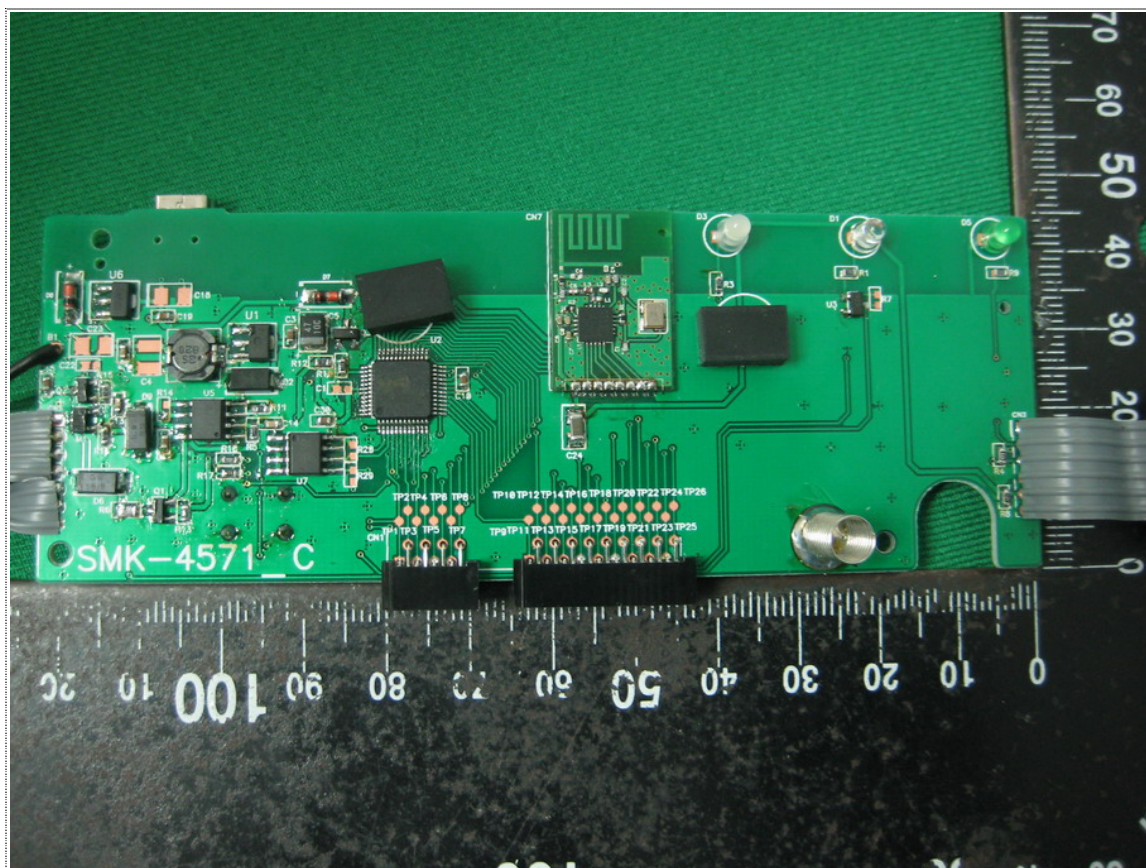


Front View of Mouse

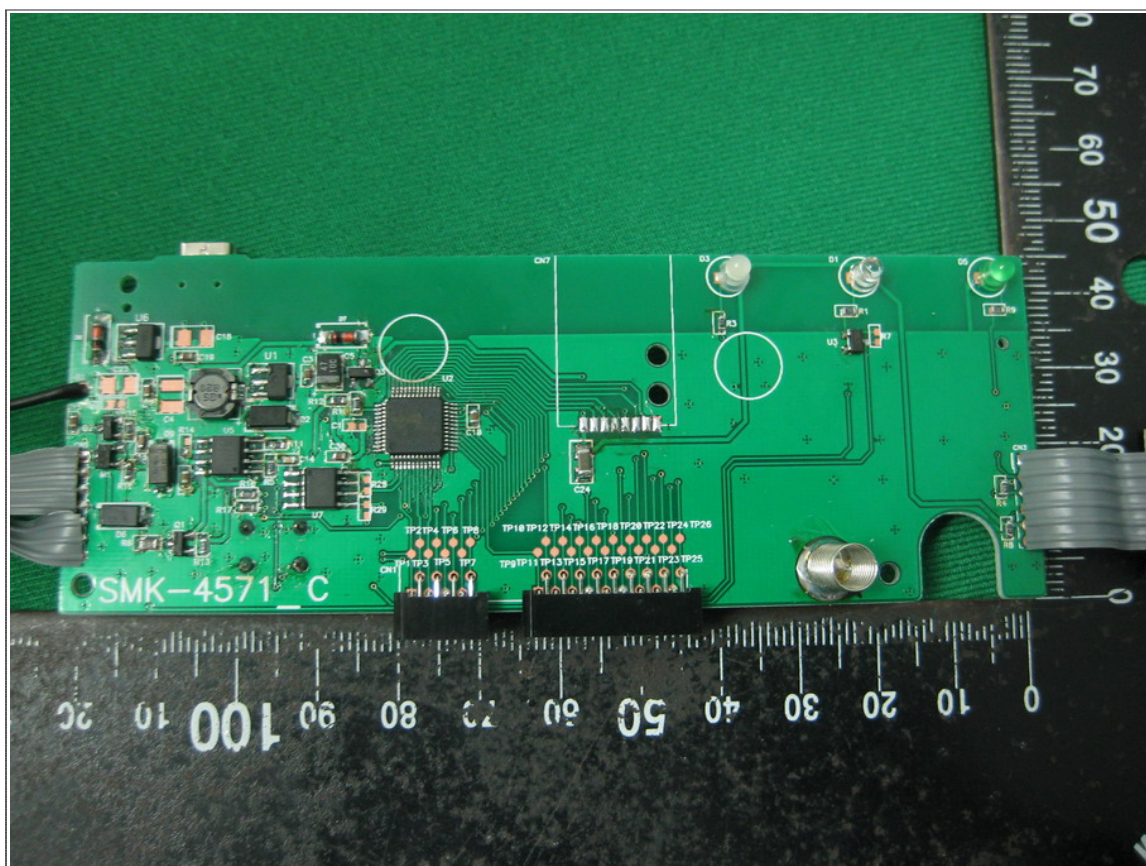


Rear View of Mouse



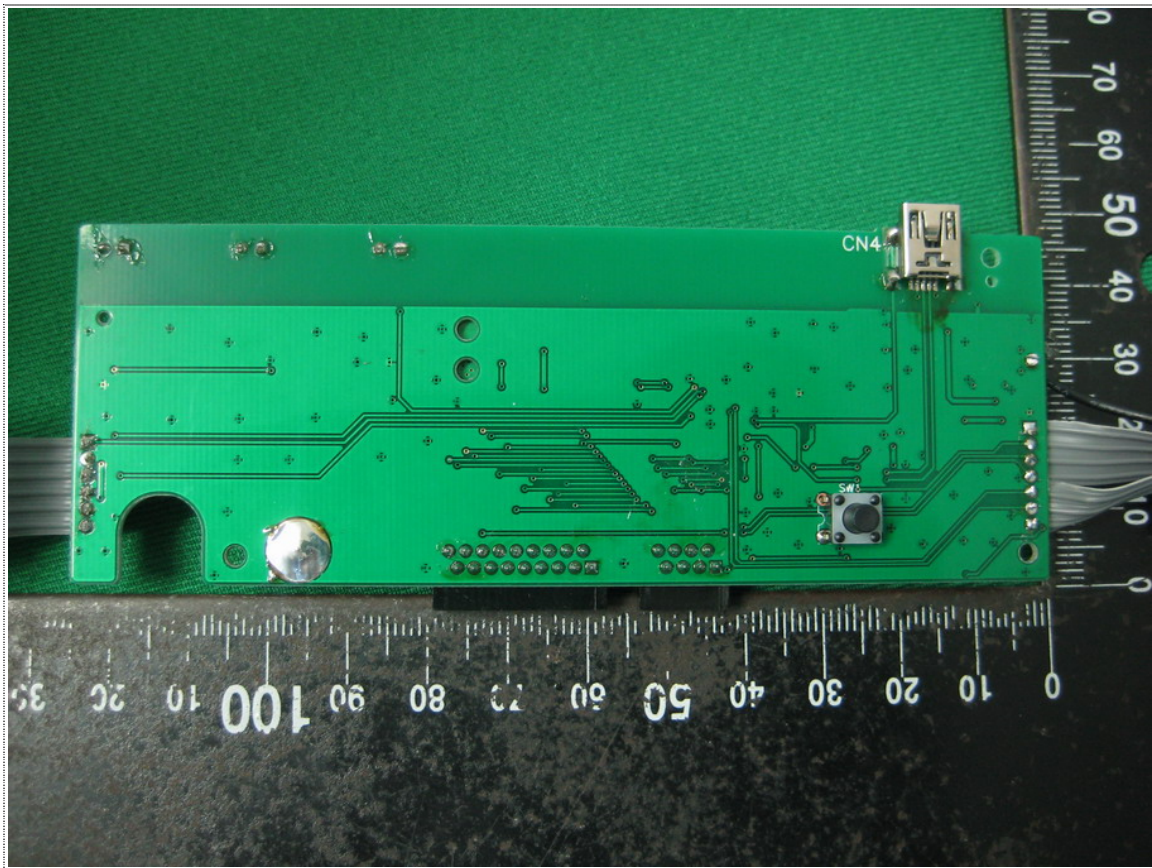


Front View of Main Board-1



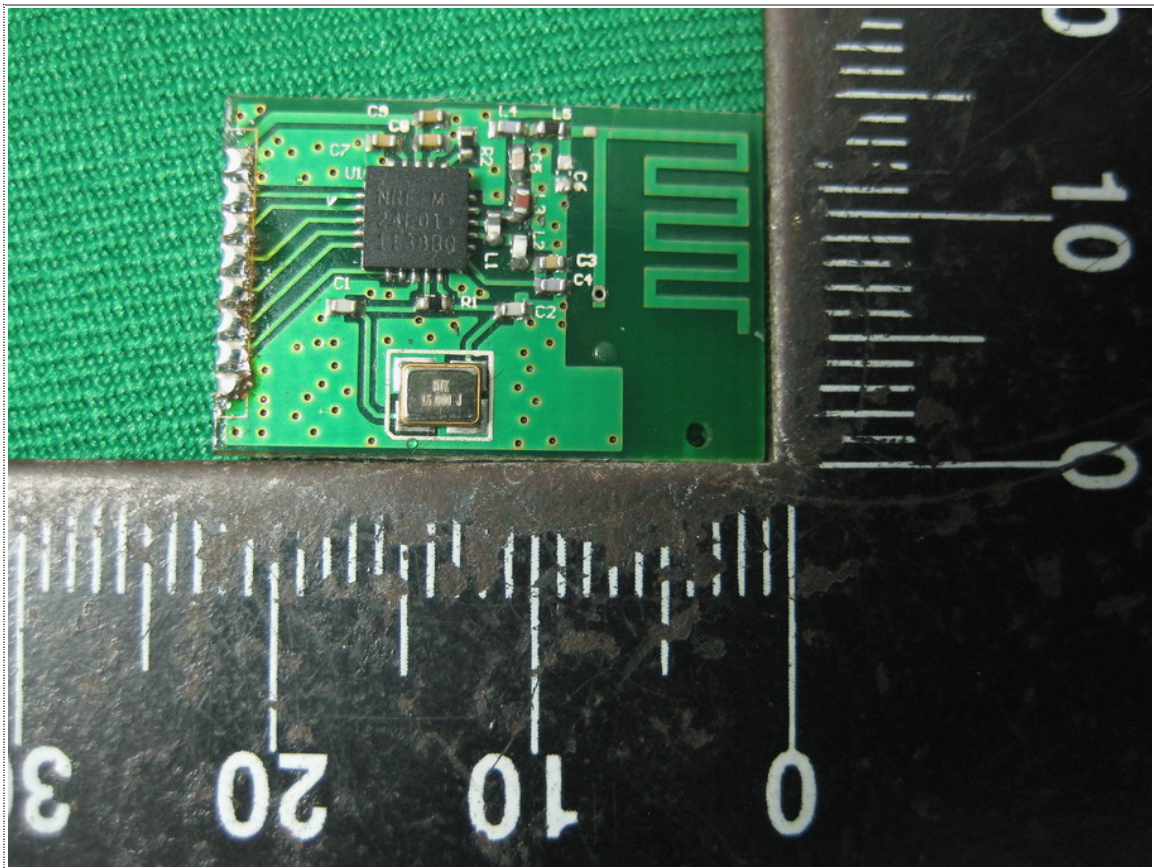
Front View of Main Board-2



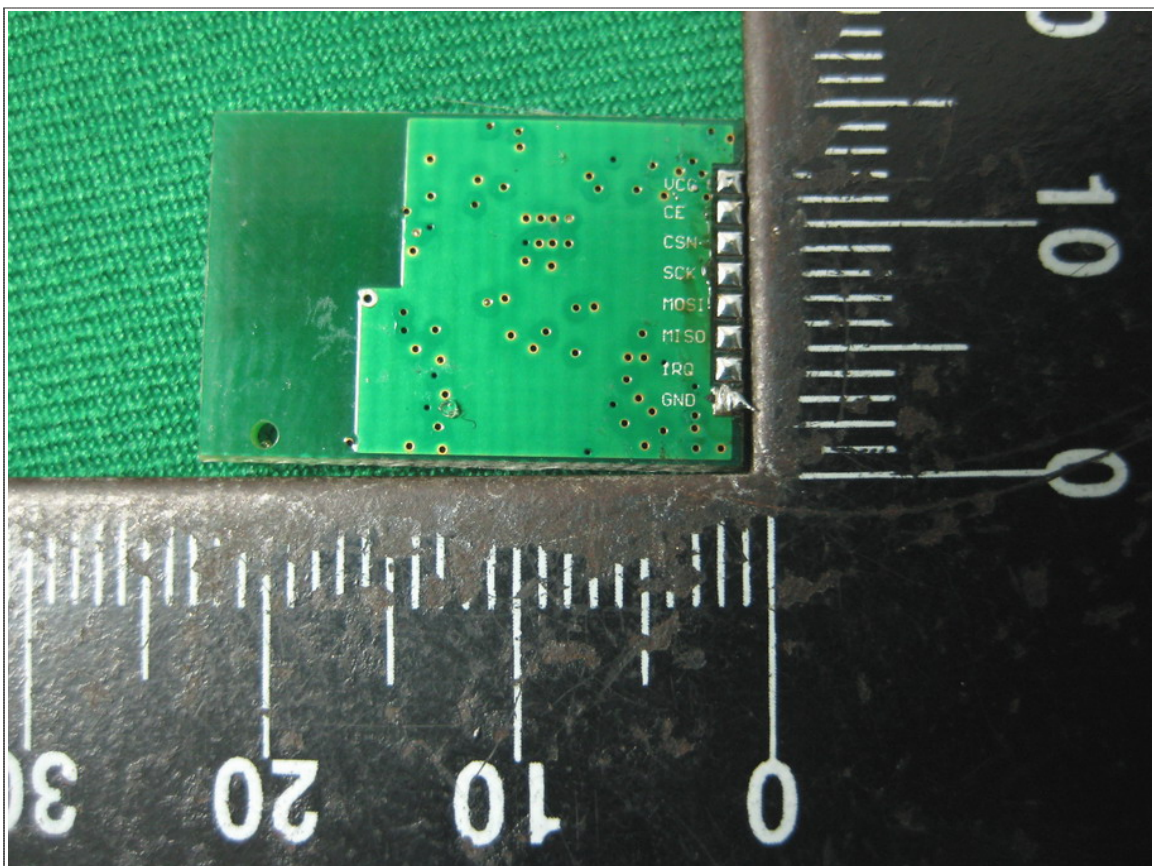


Rear View of Main Board



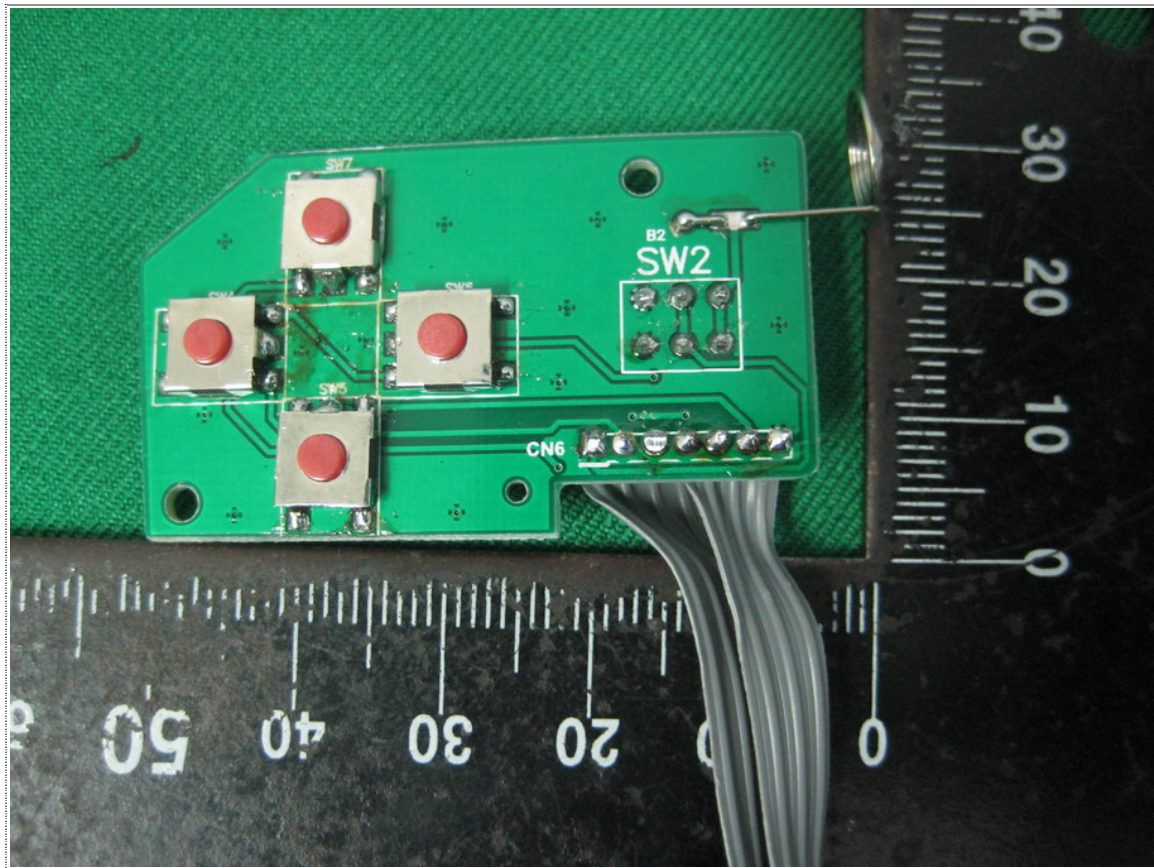


Front View of RF Module

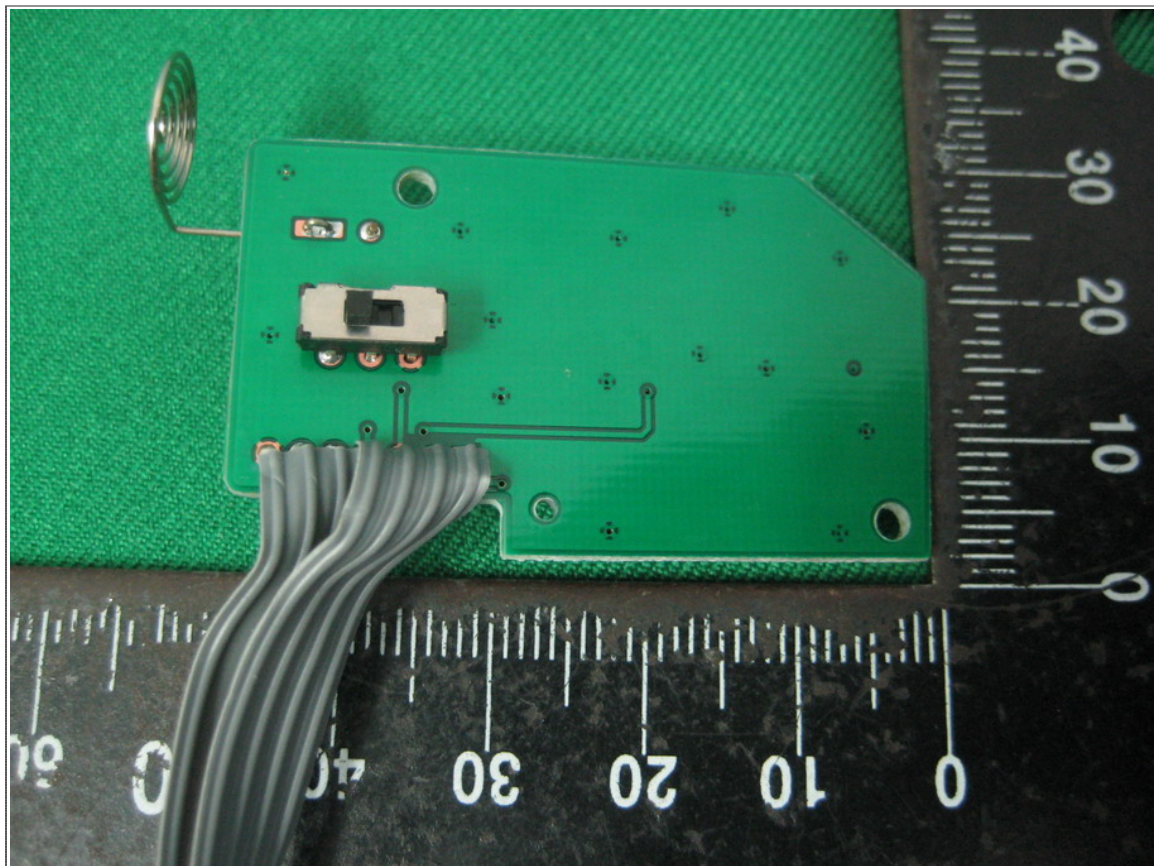


Rear View of RF Module





Front View of Button Board

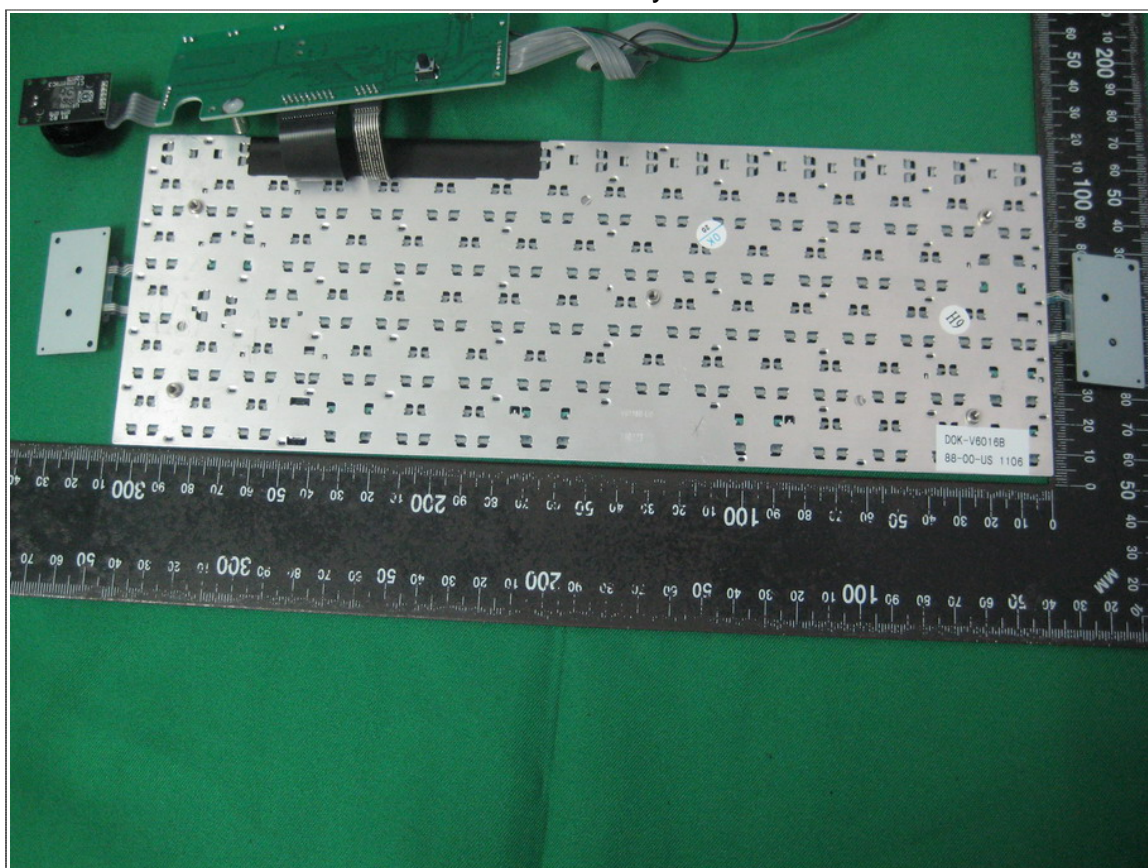


Rear View of Button Board



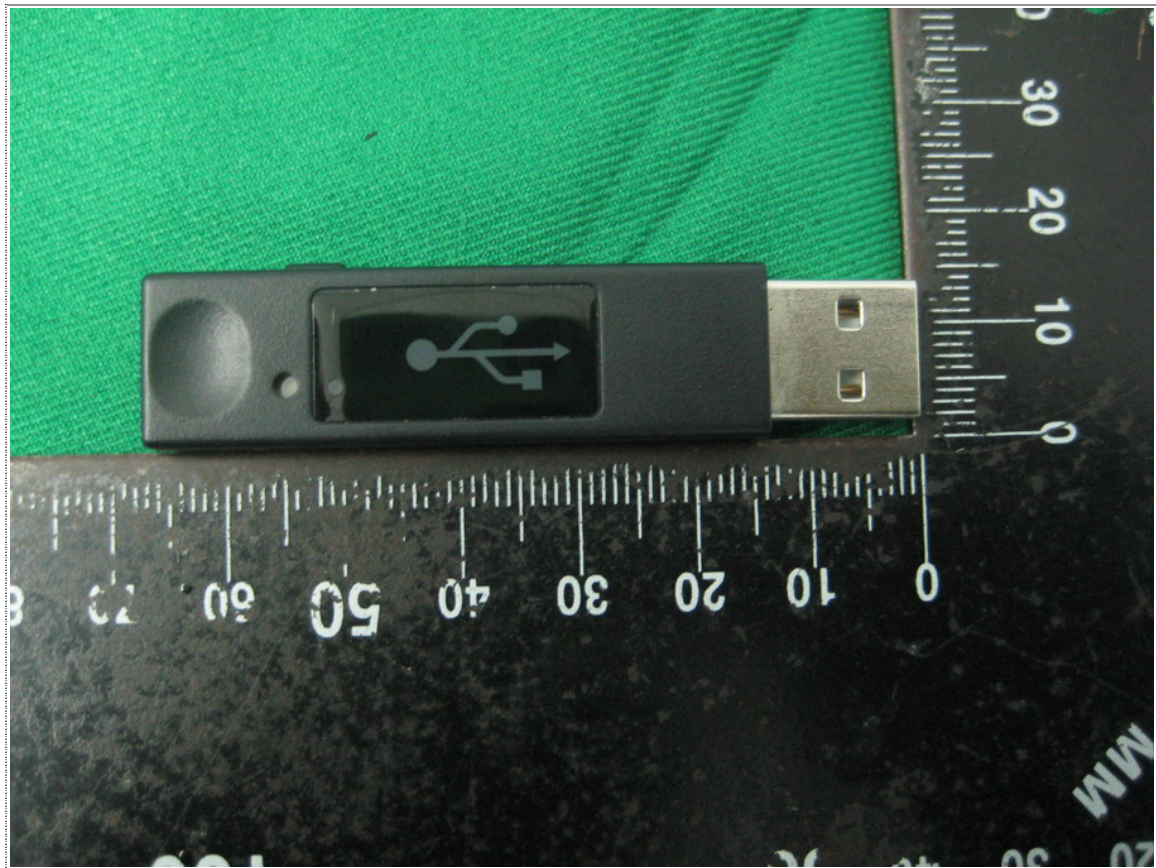


Front View of Keyboard



Rear View of Keyboard



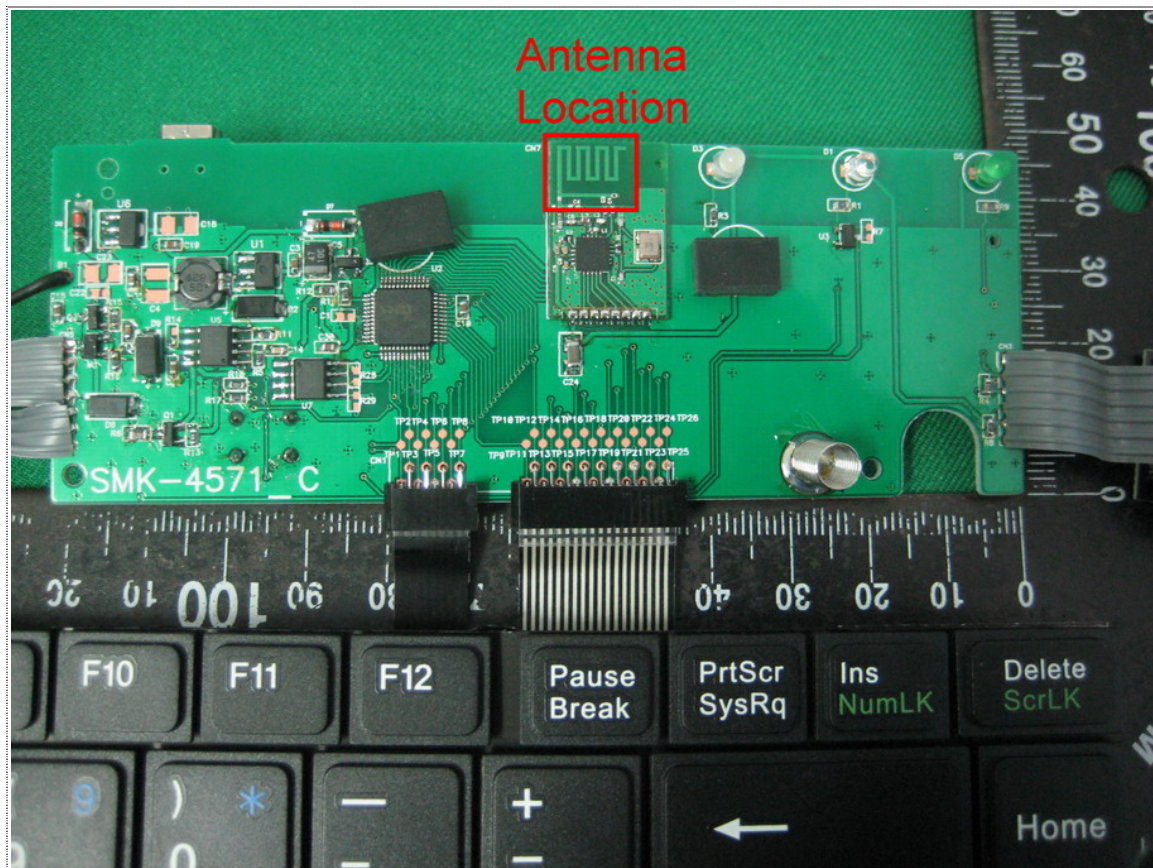


Front View of Dongle



Rear View of Dongle





Antenna Location