

SPK-2032 USB SmartKey

(PC/SC version with USB interface)

Installation Guide

Smart Card Technology Inc.

FCC NOTICE

THIS DEVICE COMPLIES WITH PART 15 OF THE FCC RULES.
OPERATION IS SUBJECT TO THE FOLLOWING TWO CONDITION:
(1) THIS DEVICE MAY NOT CAUSE HARMFUL INTERFERENCE, AND
(2) THIS DEVICE MUST ACCEPT ANY INTERFERENCE RECEIVED,
INCLUDING INTERFERENCE THAT MAY CAUSE UNDERSIRED
OPERATION.

This equipment has been tested and found to comply with the limits for a Class B digital device, pursuant to part 15 of the FCC Rules. These limits are designed to provide reasonable protection against harmful interference in a residential installation.

This equipment generates, uses and can radiate radio frequency energy and, if not installed and used in accordance with the instructions, may cause harmful interference to radio communication. However, there is no guarantee that interference will not occur in a particular installation. If this equipment does cause harmful interference to radio or television reception, which can be determined by turning the equipment off and on, the user is encouraged to try to correct the interference by one or more of the following measures :

- Reorient or relocate the receiving antenna.
- Increase the separation between the equipment and receiver.
- Connect the equipment into an outlet on a circuit different from that to which the receiver is connected.
- Consult the dealer of an experienced radio/TV technician for help.

NOTE : The manufacturer is not responsible for any radio or TV interference caused by unauthorized modifications to this equipment. Such modifications could void the user's authority to operate the equipment.

Specification of SPK-2032 SmartKey

SPK2032 SmartKey is one of the most reliable and cost competitive PKI (Public Key Infrastructure) product. SPK2032 combined with smart card reader and smart card technology in the current market. It has strong security functions in hardware and fulfills most of security requirements in software design. SPK2032 SmartKey supports two international standard cryptographic interfaces, PKCS#11 and MSCAPI so that corporation is able to integrate their applications easily with Netscape and Microsoft products. Besides integrating with existing applications, the most powerful SDK and library will help corporation to develop any customized PKI application efficiently under the most competitive cost in the current market.

(1) Hardware Features

- Enhanced 8 Bit CPU
- 96Kbytes User ROM, 4Kbytes User RAM, 32KBytes User Data Area
- 10years data retention
- 500,000 Erase/Write cycles endurance
- USB(Universal Serial Bus) Interface Compatible 1.1 Standard
- Security Firewalls for memories and DES and MAP
- Hardware DES Accelerator
- 1088bit Modular Arithmetic Processor
- ISO 3309 CRC Calculation Block
- 2.7V to 5.5V supply Voltage with 10MHz Internal Operating Frequency
- Power Saving Standby mode
- ESD Protection greater than 5KV
- USB Interface Connector(Type A)

(2) Software Features

- ISO 7816-4 Compatible(File Structure)
- Encryption/Decryption using RSA(up to 1792bits), 3DES, SEED
- Message Digests for SHA1/MD5
- MSCAPI,PKCS#11,PC/SC Supported by Library
- Windows 98/ME/2000/XP Supported
- True Random Number Generator
- NIST FIPS 140-2(Level2) Compliant

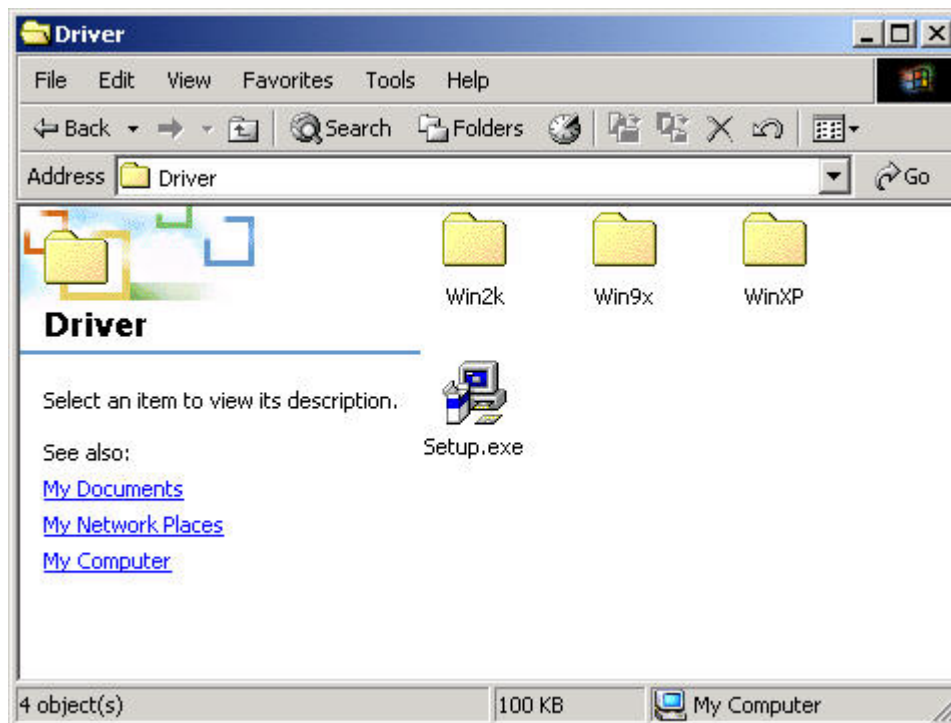
SPK2032 SmartKey Installation

You can select one among following two ways to install the driver.

1. Installation by Setup.exe

- 1) Plug the SPK2032 SmartKey into an available USB port located at the back of your computer.
- 2) New Hardware Wizard will notify the installation of new H/W.
- 3) Ignore New Hardware Wizard or Select "Cancel".
- 4) Open the Driver folder in SPK2032 SmartKey Disk, excute Setup.exe.

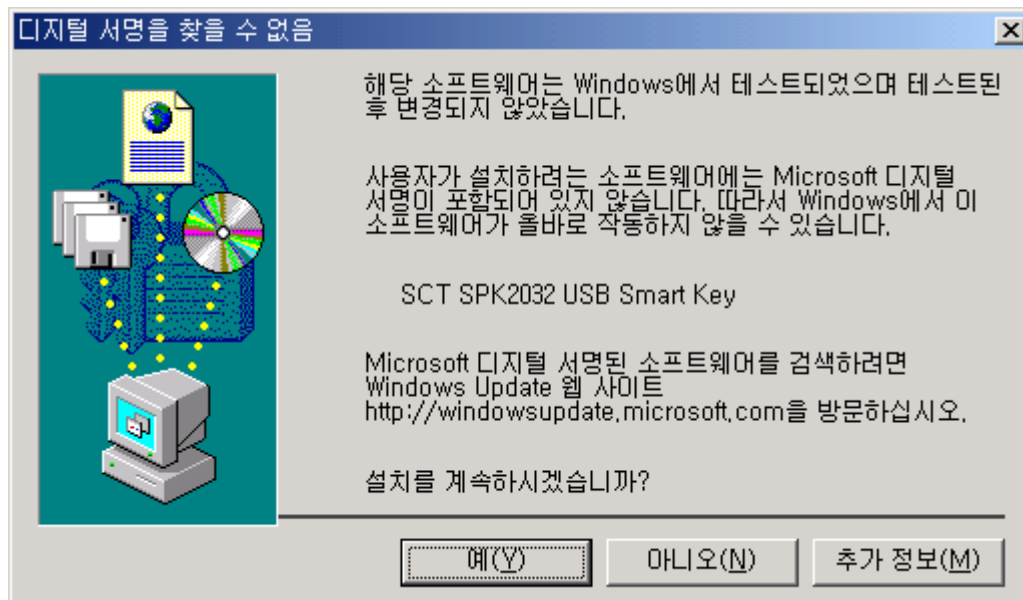
(Regardless of the OS on your PC)



- 5) Click "Install". Then Driver installation will be continued.



6) Click "Next". Then Driver installation will be completed.



2. Installation by New Hardware Wizard.

Windows 98se & Windows Me

- 1) Plug the SPK2032 SmartKey into an available USB port located at the back of your computer.
- 2) New Hardware Wizard will notify the installation of new H/W.



- 3) Continue to click 'Next' button until it prompts you for the location of setup inf file.



- 4) Specify the location of inf file search path to be **A:\Driver\Win9x** (if SPK2032 SmartKey Driver Disk is in drive A)



- 5) Click 'Next' to install the inf and sys driver files.
6) Click 'Finish' to finish the installation.

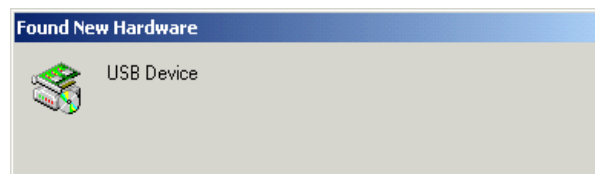


Notes on using the driver:

You may need to restart your computer for Smart Card Manager recognizes the reader.

Windows 2000 & Windows XP

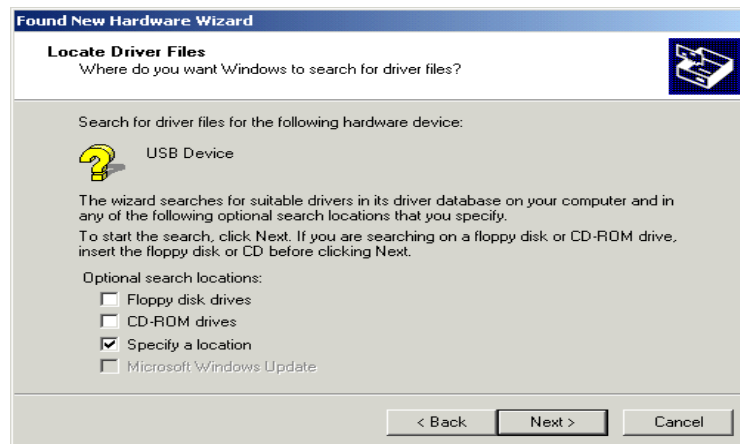
- 1) Plug the SPK2032 SmartKey into an available USB port located at the back of your computer.
- 2) New Hardware Wizard will notify the installation of new H/W.



- 3) Continue to click 'Next' button until it prompts you for the location of setup inf file.



- 4) Specify the location of inf file search path to be 'A:\Driver\Win2k' or 'A:\Driver\WinXP' (if the SPK2032 SmartKey Driver Disk is in Drive A)



- 5) Click 'Next' to install the inf and sys driver files.



- 6) Click 'Finish' to finish the installation.

