

# Smalt Technology Co.,Ltd

## GSM Mobile Phone

**Main Model: S210**

**Serial Model: N/A**

**January 31, 2013**

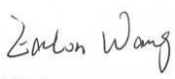


**Report No.: 12070367-FCC-R1**

**(This report supersedes NONE)**



**Modifications made to the product : None**

**This Test Report is Issued Under the Authority of:**

		
<b>Eaton Wang</b> Compliance Engineer	<b>Alex Liu</b> Technical Manager	

**This test report may be reproduced in full only.  
Test result presented in this test report is applicable to the representative sample only.**

# RF Test Report

To: FCC Part 22(H) & FCC Part 24(E): 2012

**SIEMIC, INC.**  
Accessing global markets



## Laboratory Introduction

SIEMIC, headquartered in the heart of Silicon Valley, with superior facilities in US and Asia, is one of the leading independent testing and certification facilities providing customers with one-stop shop services for Compliance Testing and Global Certifications.



In addition to [testing](#) and [certification](#), SIEMIC provides initial design reviews and [compliance management](#) through out a project. Our extensive experience with [China](#), [Asia Pacific](#), [North America](#), [European](#), and [international](#) compliance requirements, assures the fastest, most cost effective way to attain regulatory compliance for the [global markets](#).

### Accreditations for Conformity Assessment

Country/Region	Accreditation Body	Scope
USA	FCC, A2LA	EMC , RF/Wireless , Telecom
Canada	IC, A2LA, NIST	EMC, RF/Wireless , Telecom
Taiwan	BSMI , NCC , NIST	EMC, RF, Telecom , Safety
Hong Kong	OFTA , NIST	RF/Wireless ,Telecom
Australia	NATA, NIST	EMC, RF, Telecom , Safety
Korea	KCC/RRA, NIST	EMI, EMS, RF , Telecom, Safety
Japan	VCCI, JATE, TELEC, RFT	EMI, RF/Wireless, Telecom
Mexico	NOM, COFETEL, Caniety	Safety, EMC , RF/Wireless, Telecom
Europe	A2LA, NIST	EMC, RF, Telecom , Safety

### Accreditations for Product Certifications

Country/Region	Accreditation Body	Scope
USA	FCC TCB, NIST	EMC , RF , Telecom
Canada	IC FCB , NIST	EMC , RF , Telecom
Singapore	iDA, NIST	EMC , RF , Telecom
EU	NB	EMC & R&TTE Directive
Japan	MIC, (RCB 208)	RF , Telecom
Hong Kong	OFTA (US002)	RF , Telecom

This page has been left blank intentionally.

**CONTENTS**

**1. EXECUTIVE SUMMARY & EUT INFORMATION.....5**

**2. TECHNICAL DETAILS .....6**

**3. MODIFICATION .....7**

**4. TEST SUMMARY .....8**

**5. MEASUREMENTS, EXAMINATION AND DERIVED RESULTS.....9**

**ANNEX A. TEST INSTRUMENT & METHOD .....32**

**ANNEX B. EUT AND TEST SETUP PHOTOGRAPHS .....35**

**ANNEX C. TEST SETUP AND SUPPORTING EQUIPMENT.....45**

**ANNEX D. USER MANUAL / BLOCK DIAGRAM / SCHEMATICS / PART LIST .....49**

**ANNEX E. DECLARATION OF SIMILARITY .....50**

All above were explained in the attached Declaration Letter. And based on the letter the difference between them will not affect any test items, so in this report we didn't revise any test data and photos about all affect part.

## 2. TECHNICAL DETAILS

<b>Purpose</b>	<b>Compliance testing of GSM Mobile Phone with stipulated standard</b>
<b>Applicant / Client</b>	<b>Smalt Technology Co.,Ltd No.1301A.Building A,Hai song DaSha,Che Gong Miao,Futian District,Shenzhen P.R China</b>
<b>Manufacturer</b>	<b>Smalt Technology Co.,Ltd No.1301A.Building A,Hai song DaSha,Che Gong Miao,Futian District,Shenzhen P.R China</b>
<b>Laboratory performing the tests</b>	<b>SIEMIC Nanjing (China) Laboratories NO.2-1,Longcang Dadao, Yuhua Economic Development Zone, Nanjing, China Tel:+86(25)86730128/86730129 Fax:+86(25)86730127 Email:info@siemic.com</b>
<b>Test report reference number</b>	<b>12070367-FCC-R1</b>
<b>Date EUT received</b>	<b>January 04, 2013</b>
<b>Standard applied</b>	<b>FCC Part 22(H) &amp; FCC Part 24(E): 2012</b>
<b>Dates of test</b>	<b>January 14, 2013</b>
<b>No of Units</b>	<b>#1</b>
<b>Equipment Category</b>	<b>PCE</b>
<b>Trade Name</b>	<b>SMALT</b>
<b>RF Operating Frequency (ies)</b>	<b>GSM850 TX : 824.2 ~ 848.8 MHz; RX : 869.2 ~ 893.8 MHz PCS1900 TX : 1850.2 ~ 1909.8 MHz; RX : 1930.2 ~ 1989.8 MHz</b>
<b>Number of Channels</b>	<b>299CH (PCS1900) and 124CH (GSM850)</b>
<b>Modulation</b>	<b>GSM: GMSK</b>
<b>GPRS Multi-slot class</b>	<b>N/A</b>
<b>FCC ID</b>	<b>R9DS210</b>
<b>Port</b>	<b>Power Port, Earphone Port</b>

### 3. MODIFICATION

NONE

## 4. TEST SUMMARY

The product was tested in accordance with the following specifications.  
 All testing has been performed according to below product classification:

### PCE

#### Test Results Summary

Test Standard	Description	Product Class	Pass / Fail
§ 1.1307, § 2.1093	RF Exposure (SAR)	See Above	Pass
§ 2.1046; § 22.913 (a); § 24.232 (c)	RF Output Power	See Above	Pass
§ 2.1047	Modulation Characteristics	See Above	N/A
§ 2.1049; § 22.905 § 22.917; § 24.238	99% & -26 dB Occupied Bandwidth	See Above	Pass
§ 2.1051, § 22.917 (a); § 24.238 (a)	Spurious Emissions at Antenna Terminal	See Above	Pass
§ 2.1053 § 22.917 (a); § 24.238 (a)	Field Strength of Spurious Radiation	See Above	Pass
§ 22.917 (a); § 24.238 (a)	Out of band emission, Band Edge	See Above	Pass
§ 2.1055 § 22.355; § 24.235	Frequency stability vs. temperature Frequency stability vs. voltage	See Above	Pass

*Note1: Testing was performed by configuring EUT to maximum output power status, the declared output power class for different.*

*Note2: the two models LK-200 and S210 is only for different color and logo, so we don't retest the model S210 again in this report, and the test result please refer to report 12070366-FCC-R1.*



## **5. MEASUREMENTS, EXAMINATION AND DERIVED RESULTS**

### **5.1 §1.1307, §2.1093- RF Exposure (SAR)**

**Test Result: Pass**

The EUT is a portable device, thus requires SAR evaluation;  
please refer to SIEMIC SAR Report: 12070367-FCC-H

## **5.2 §2.1046 ;§22.913 (a); §24.232 (c)- RF Output Power**

1. Conducted Measurement  
EUT was set for low, mid, high channel with modulated mode and highest RF output power.  
The spectrum analyzer was connected to the antenna terminal.
2. Conducted Emissions Measurement Uncertainty  
All test measurements carried out are traceable to national standards. The uncertainty of the measurement at a confidence level of approximately 95% (in the case where distributions are normal), with a coverage factor of 2, in the range 30MHz – 40GHz is  $\pm 1.5\text{dB}$ .
3. Environmental Conditions
 

Temperature	15°C
Relative Humidity	50%
Atmospheric Pressure	1016mbar
4. Test date: January 14, 2013  
Tested By: Eaton Wang

### **Procedures:**

#### **For Conducted Power:**

1. The transmitter output port was connected to base station.
2. Set EUT at maximum power through base station.
3. Select lowest, middle, and highest channels for each band and different test mode.

#### **For ERP/EIRP:**

1. The transmitter was placed on a wooden turntable, and it was transmitting into a non-radiating load which was also placed on the turntable.
2. The measurement antenna was placed at a distance of 3 meters from the EUT. During the tests, the antenna height and polarization as well as EUT azimuth were varied in order to identify the maximum level of emissions from the EUT. The test was performed by placing the EUT on 3-orthogonal axis.
3. The frequency range up to tenth harmonic of the fundamental frequency was investigated.
4. Remove the EUT and replace it with substitution antenna. A signal generator was connected to the substitution antenna by a non-radiating cable. The absolute levels of the spurious emissions were measured by the substitution.

Spurious emissions in dB =  $10 \lg (\text{TXpwr in Watts}/0.001)$  – the absolute level

Spurious attenuation limit in dB =  $43 + 10 \text{Log}_{10} (\text{power out in Watts})$

### **Test Result: Pass**

**Remark:** Conducted Burst Average power for reporting purposes only

Note: the following test data please refer to report 12070366-FCC-R1.

## Conducted Power

Burst Average Power (dBm)								
Band	GSM850				GSM1900			
Channel	128	190	251	Tune up Power tolerant	512	661	810	Tune up Power tolerant
Frequency (MHz)	824.2	836.6	848.8	/	1850.2	1880	1909.8	/
GSM Voice (1 uplink)	<b>31.36</b>	31.29	31.28	32±1	<b>29.14</b>	28.45	28.35	29±1
GPRS Multi-Slot Class 8 (1 uplink)	N/A	N/A	N/A	N/A	N/A	N/A	N/A	N/A
GPRS Multi-Slot Class 10 (2 uplink)	N/A	N/A	N/A	N/A	N/A	N/A	N/A	N/A
GPRS Multi-Slot Class 12 (4 uplink)	N/A	N/A	N/A	N/A	N/A	N/A	N/A	N/A
Remark : GPRS, CS1 coding scheme. Multi-Slot Class 8 , Support Max 4 downlink, 1 uplink , 5 working link Multi-Slot Class 10 , Support Max 4 downlink, 2 uplink , 5 working link Multi-Slot Class 12 , Support Max 4 downlink, 4 uplink , 5 working link								

**Note: Since GSM mode has higher power, so the test items below were not performed to GPRS mode.**

## ERP & EIRP (worst case)

### ERP for Cellular Band (Part 22H)

Frequency (MHz)	Substituted level (dBm)	Antenna Polarization	Antenna Gain correction (dBi)	Cable Loss (dB)	Absolute Level (dBm)	Limit (dBm)
824.2	25.34	V	6.2	1.67	29.87	38.45
824.2	25.12	H	6.2	1.67	29.65	38.45
836.6	25.49	V	6.2	1.67	<b>30.02</b>	38.45
836.6	25.08	H	6.2	1.67	29.61	38.45
848.8	25.15	V	6.3	1.67	29.78	38.45
848.8	25.24	H	6.3	1.67	29.87	38.45

### EIRP for PCS Band (Part 24E)

Frequency (MHz)	Substituted level (dBm)	Antenna Polarization	Antenna Gain correction (dBi)	Cable Loss (dB)	Absolute Level (dBm)	Limit (dBm)
1850.2	22.53	V	8.6	2.66	28.47	33
1850.2	22.96	H	8.6	2.66	<b>28.90</b>	33
1880	22.34	V	8.6	2.34	28.60	33
1880	22.27	H	8.6	2.34	28.53	33
1909.8	22.08	V	8.6	2.17	28.51	33
1909.8	21.82	H	8.6	2.17	28.25	33

Note: Factors= Antenna Gain Correction-Cable Loss

### **5.3 §2.1047 - Modulation Characteristic**

According to FCC § 2.1047(d), Part 22H & 24E there is no specific requirement for digital modulation, therefore modulation characteristic is not presented.

## **5.4 §2.1049, §22.917, §22.905 & §24.238 - Occupied Bandwidth**

1. Conducted Measurement  
 EUT was set for low, mid, high channel with modulated mode and highest RF output power.  
 The spectrum analyser was connected to the antenna terminal.
2. Environmental Conditions
 

Temperature	15°C
Relative Humidity	50%
Atmospheric Pressure	1020mbar
3. Conducted Emissions Measurement Uncertainty  
 All test measurements carried out are traceable to national standards. The uncertainty of the measurement at a confidence level of approximately 95% (in the case where distributions are normal), with a coverage factor of 2, in the range 30MHz – 40GHz is  $\pm 1.5\text{dB}$ .
4. Test date : January 14, 2013  
 Tested By : Eaton Wang

### **Procedures:**

1. The EUT was connected to Spectrum Analyzer and Base Station via power divider.
2. The 99% and 26 dB occupied bandwidth (BW) of the middle channel for the highest RF powers.

### **Test Results: Pass**

Note: the following test data please refer to report 12070366-FCC-R1.

Cellular Band (Part 22H)

Channel	Frequency (MHz)	99% Occupied Bandwidth (kHz)	26 dB Bandwidth (kHz)
128	824.2	<b>246.000</b>	318.000
190	836.6	244.000	318.000
251	848.8	246.000	<b>320.000</b>

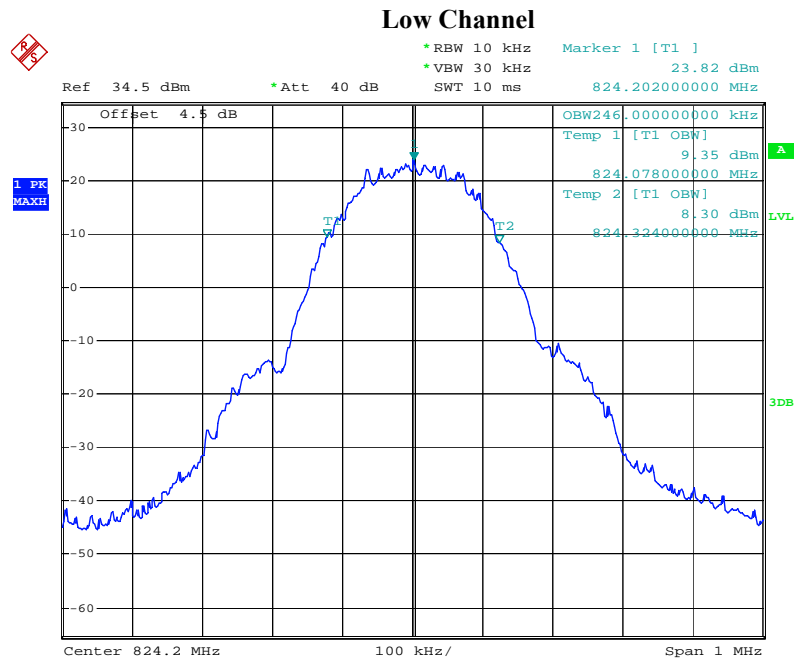
PCS Band (Part 24E)

Channel	Frequency (MHz)	99% Occupied Bandwidth (kHz)	26 dB Bandwidth (kHz)
512	1850.2	<b>246.000</b>	310.000
661	1880.0	244.000	312.000
810	1909.8	244.000	<b>316.000</b>

Please refer to the following plots.

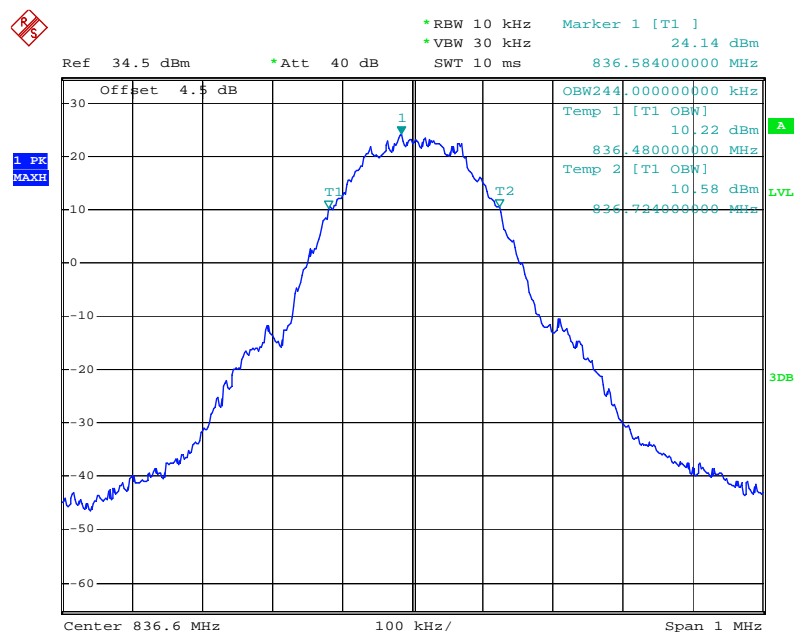
## Cellular Band (Part 22H)

### 99% Occupied Bandwidth



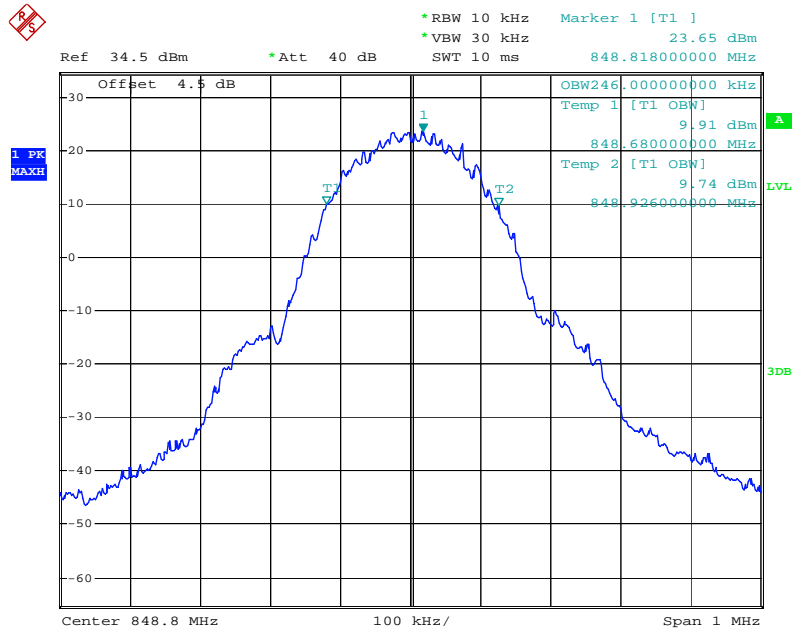
Date: 14.JAN.2013 10:41:11

### Middle Channel



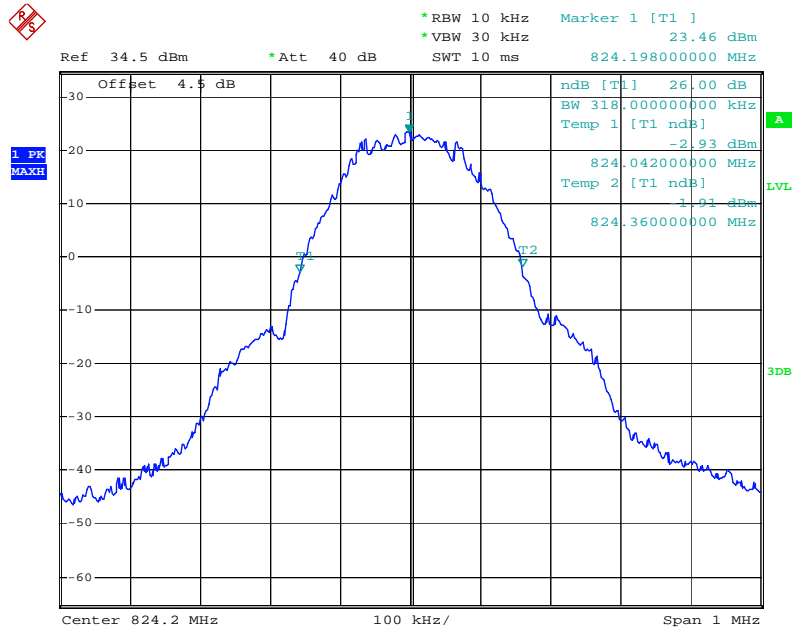
Date: 14.JAN.2013 10:42:05

High Channel



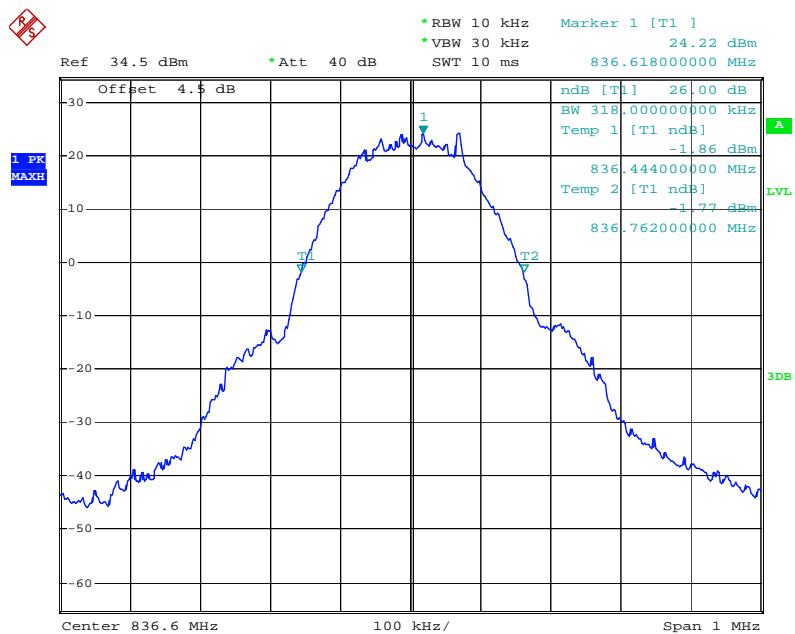
Date: 14.JAN.2013 10:42:48

26 dB Bandwidth  
Low Channel



Date: 14.JAN.2013 10:45:07

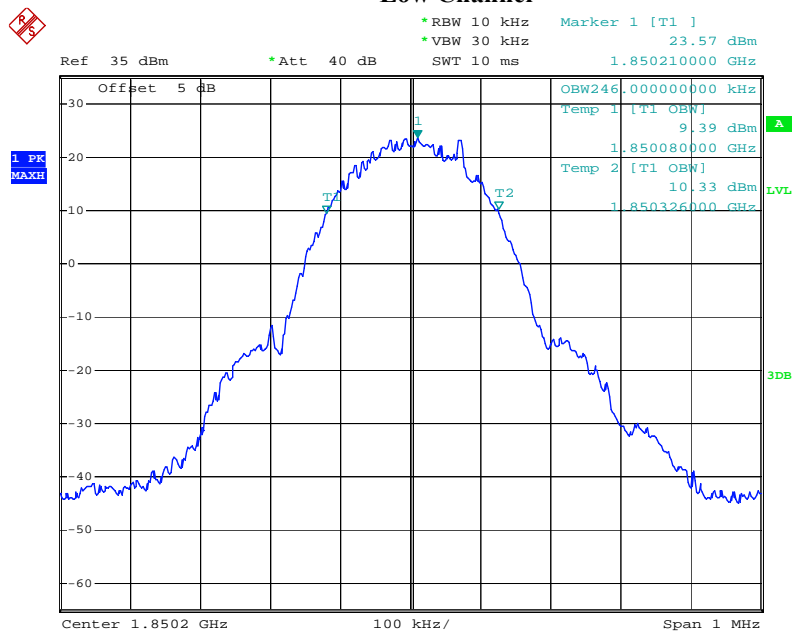
Middle Channel





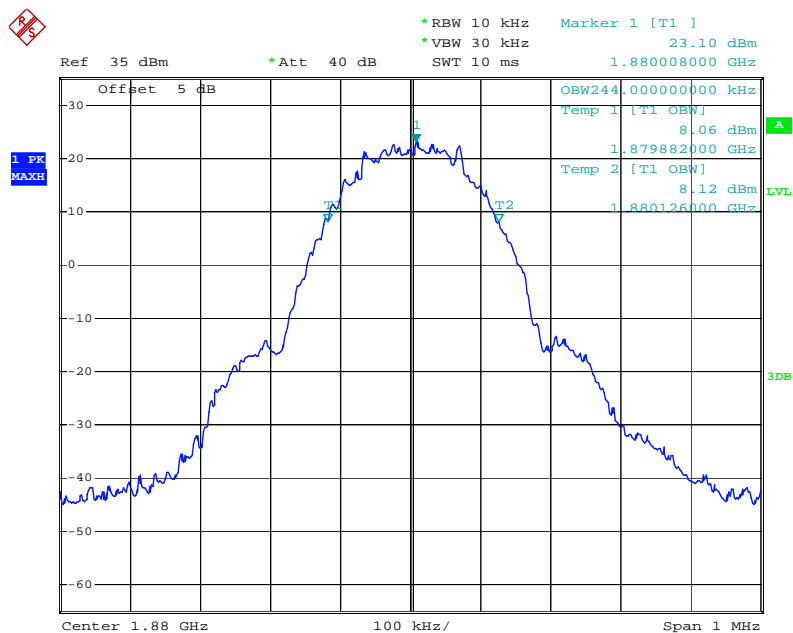
# PCS Band (Part 24E)

## 99% Occupied Bandwidth Low Channel



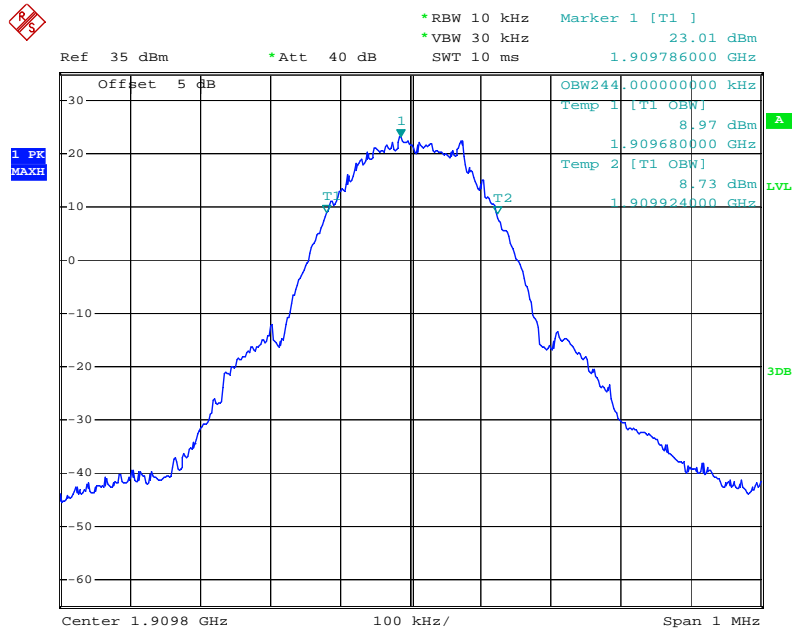
Date: 14.JAN.2013 10:54:21

## Middle Channel



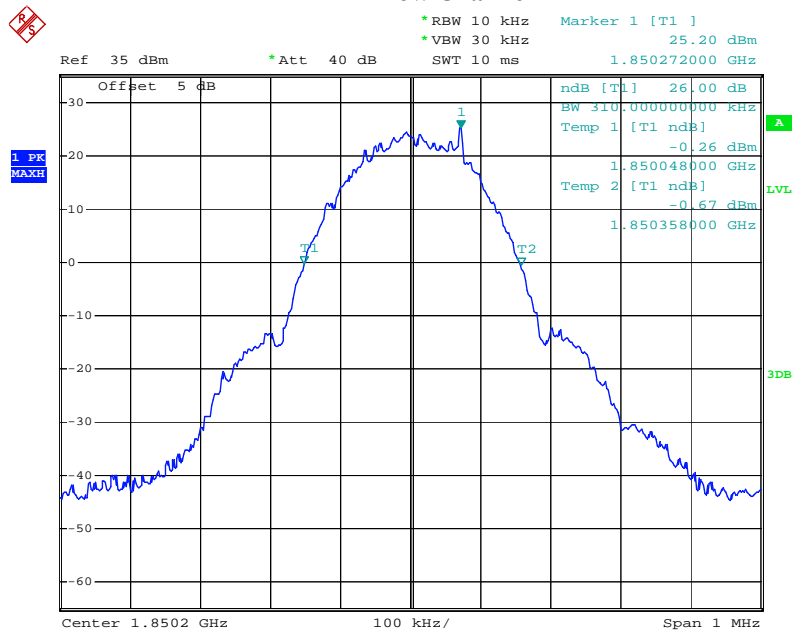
Date: 14.JAN.2013 10:53:38

## High Channel



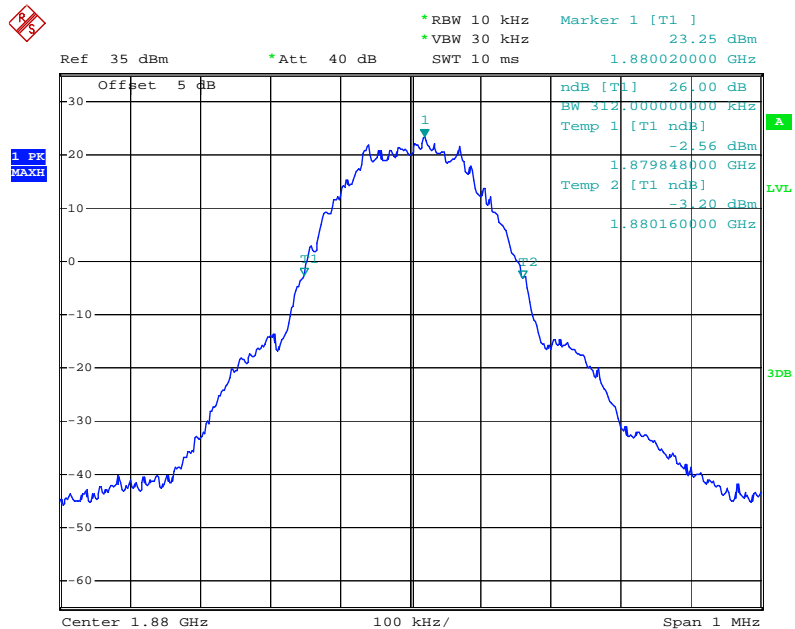
Date: 14.JAN.2013 10:52:50

## 26 dB Bandwidth Low Channel



Date: 14.JAN.2013 10:55:06

Middle Channel



## **5.5 §2.1051, §22.917(a) & §24.238(a) - Spurious Emissions at Antenna Terminals**

1. Conducted Measurement  
EUT was set for low, mid, high channel with modulated mode and highest RF output power.  
The spectrum analyzer was connected to the antenna terminal.
2. Conducted Emissions Measurement Uncertainty  
All test measurements carried out are traceable to national standards. The uncertainty of the measurement at a confidence level of approximately 95% (in the case where distributions are normal), with a coverage factor of 2, in the range 30MHz – 40GHz is  $\pm 1.5\text{dB}$ .
3. Environmental Conditions

Temperature	15°C
Relative Humidity	50%
Atmospheric Pressure	1020mbar
4. Test date : January 14, 2013  
Tested By : Eaton Wang

### **Standard Requirement:**

The power of any emission outside of the authorized operating frequency ranges must be lower than the transmitter power (P) by a factor of at least  $43 + 10 \log (P)$  dB.

### **Procedures:**

1. The EUT was connected to Spectrum Analyzer and Base Station via power divider.
2. The Band Edges of low and high channels for the highest RF powers were measured. Setting RBW as roughly BW/100.

### **Test Result: Pass**

Refer to the attached plots.

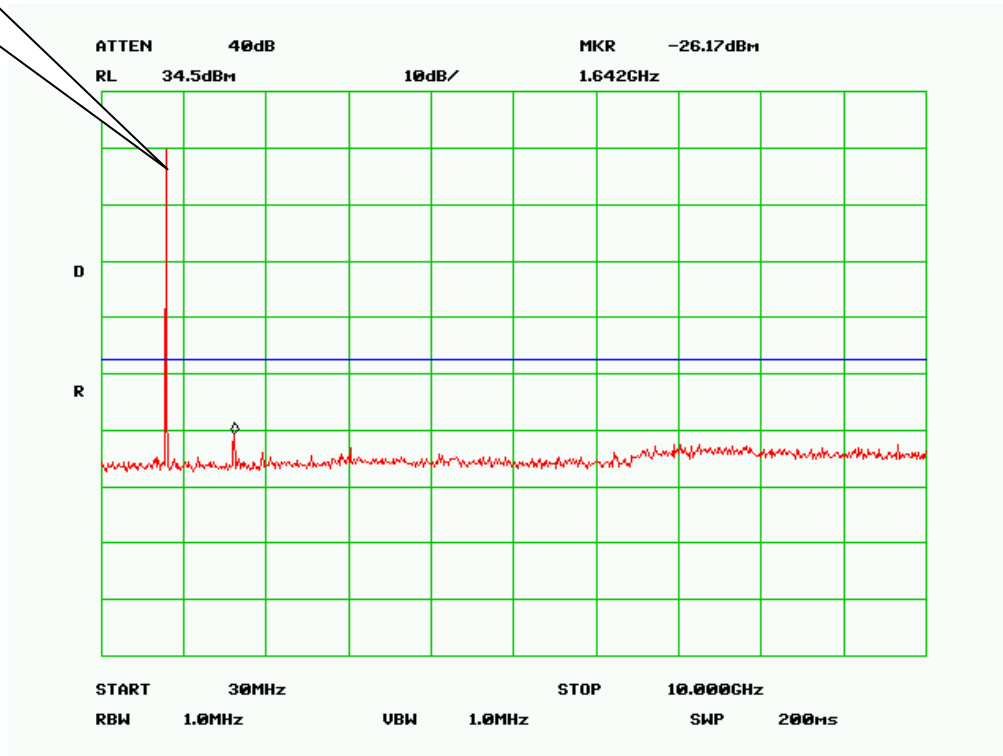
Note: the following test data please refer to report 12070366-FCC-R1.

## Cellular Band (Part 22H)

30MHz-10GHz – GSM850

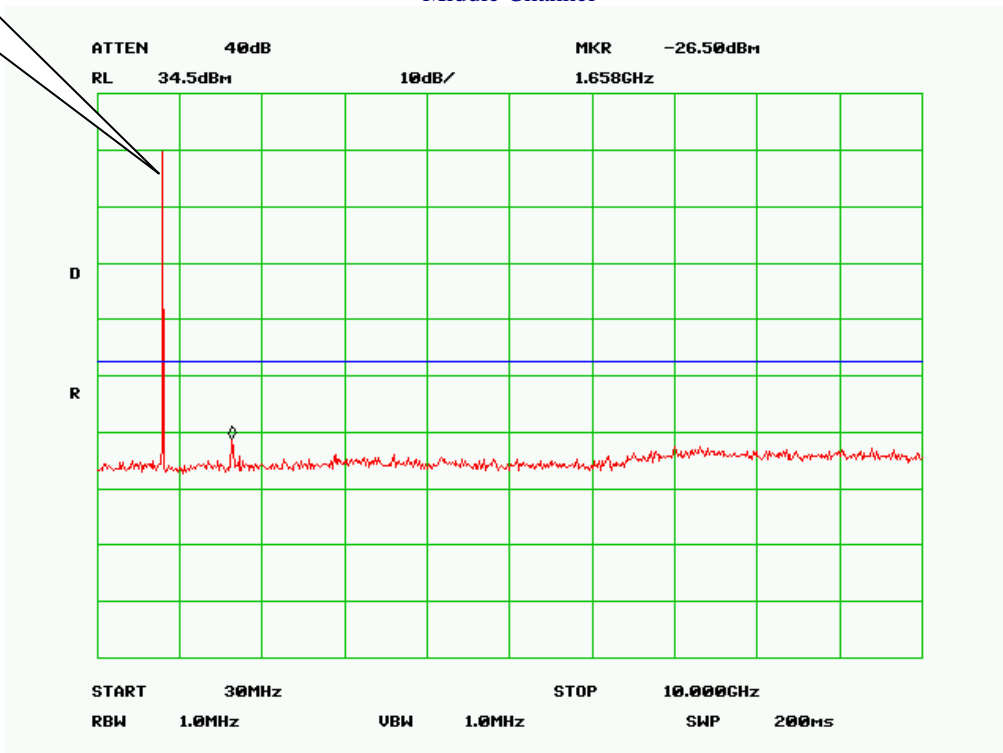
Fundamental

Low Channel



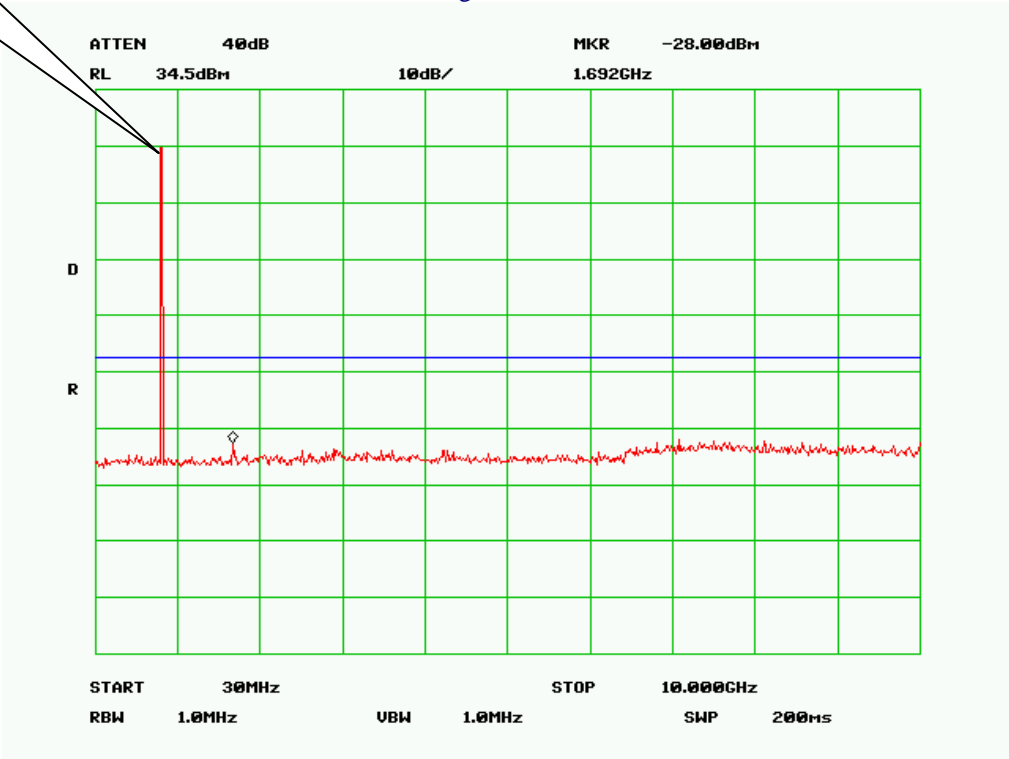
Fundamental

Middle Channel



Fundamental

High Channel

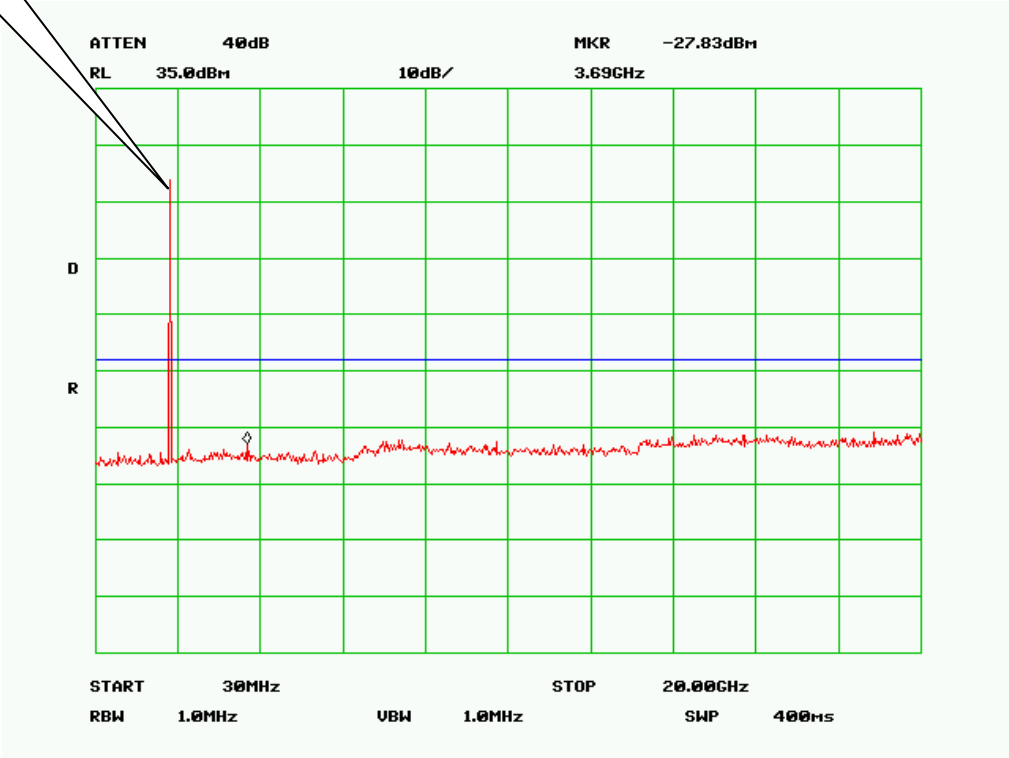


PCS Band (Part24E)

Fundamental

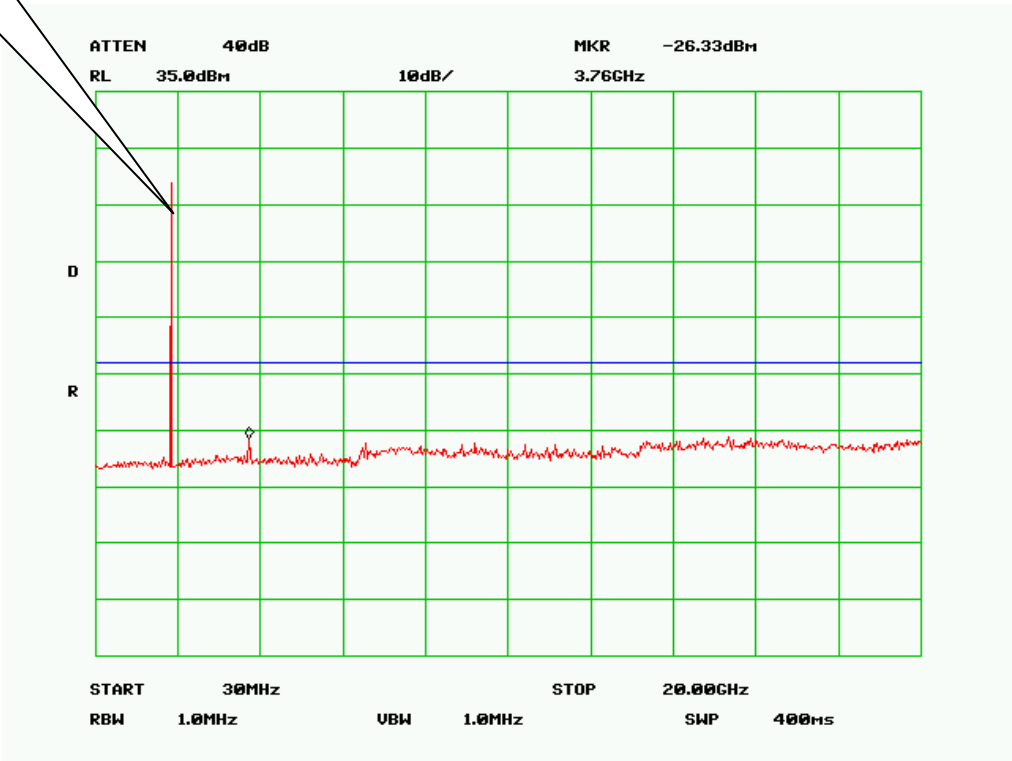
30MHz-20GHz – PCS1900

Low Channel



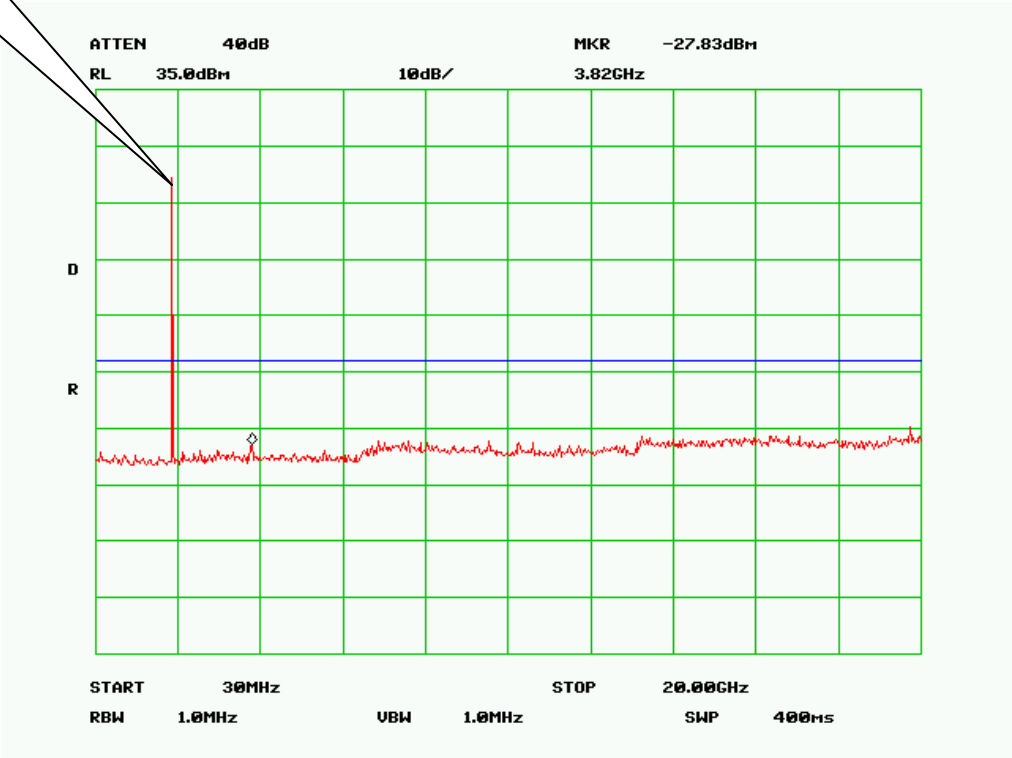
Fundamental

### Middle Channel



Fundamental

### High Channel



## **5.6 §2.1053, §22.917 & §24.238 - Spurious Radiated Emissions**

1. All possible modes of operation were investigated. Only the 6 worst case emissions measured, using the correct CISPR detectors, are reported. All other emissions were relatively insignificant.
2. A "-ve" margin indicates a PASS as it refers to the margin present below the limit line at the particular frequency.
3. Radiated Emissions Measurement Uncertainty  
All test measurements carried out are traceable to national standards. The uncertainty of the measurement at a confidence level of approximately 95% (in the case where distributions are normal), with a coverage factor of 2, in the range 1GHz – 40GH is  $\pm 6.0\text{dB}$  (for EUTs  $< 0.5\text{m} \times 0.5\text{m} \times 0.5\text{m}$ ).
4. Environmental Conditions

Temperature	15°C
Relative Humidity	50%
Atmospheric Pressure	1018mbar
5. Test date : January 14, 2013  
Tested By : Eaton Wang

### **Standard Requirement:**

The power of any emission outside of the authorized operating frequency ranges must be attenuated below the transmitter power (P) by a factor of at least  $43 + 10 \log (P)$  dB. The spectrum is scanned from 30 MHz up to a frequency including its 10<sup>th</sup> harmonic.

### **Procedures:**

Equipment was setup in a semi-anechoic chamber. For measurements above 1 GHz an average measurement was taken with a 10Hz video bandwidth. The EUT was tested at low, mid and high with the highest output power. An emission was scan up to 10<sup>th</sup> harmonic of the operating frequency.

Sample Calculation:

EUT Field Strength = Raw Amplitude (dB $\mu$ V/m) – Amplifier Gain (dB) + Antenna Factor (dB) + Cable Loss (dB) + Filter Attenuation (dB, if used)

### **Test Result: Pass**

Note: the following test data please refer to report 12070366-FCC-R1.



## Cellular Band (Part 22H)

### Low channel

Frequency (MHz)	Substituted level (dBm)	Direction (degree)	Height (cm)	Polarity (H/V)	Antenna Gain Correction (dB)	Cable Loss (dB)	Amplifier (dB)	Corrected Reading (dBm)	Limit (dBm)	Margin (dB)
1648.4	-32.78	112	135	V	8.2	2.17	0	-26.75	-13	-13.75
1648.4	-33.11	237	204	H	8.2	2.17	0	-27.08	-13	-14.08
2472.6	-38.49	153	232	V	9.3	3.03	0	-32.22	-13	-19.22
2472.6	-38.62	244	301	H	9.3	3.03	0	-32.35	-13	-19.35

### Middle channel

Frequency (MHz)	Substituted level (dBm)	Direction (degree)	Height (cm)	Polarity (H/V)	Antenna Gain Correction (dB)	Cable Loss (dB)	Amplifier (dB)	Corrected Reading (dBm)	Limit (dBm)	Margin (dB)
1673.2	-31.17	310	201	V	8.2	2.17	0	-25.14	-13	-12.14
1673.2	-32.46	252	134	H	8.2	2.17	0	-26.43	-13	-13.43
2509.8	-37.78	213	238	V	9.4	3.05	0	-31.43	-13	-18.43
2509.8	-38.37	123	237	H	9.4	3.05	0	-32.02	-13	-19.02

### High channel

Frequency (MHz)	Substituted level (dBm)	Direction (degree)	Height (cm)	Polarity (H/V)	Antenna Gain Correction (dB)	Cable Loss (dB)	Amplifier (dB)	Corrected Reading (dBm)	Limit (dBm)	Margin (dB)
1697.6	-31.69	235	252	V	8.2	2	0	-25.49	-13	-12.49
1697.6	-32.18	244	155	H	8.2	2	0	-25.98	-13	-12.98
2546.4	-36.94	130	130	V	9.4	3.05	0	-30.59	-13	-17.59
2546.4	-37.58	159	208	H	9.4	3.05	0	-31.23	-13	-18.23

## PCS Band (Part 24E)

### Low channel

Frequency (MHz)	Substituted level (dBm)	Direction (degree)	Height (cm)	Polarity (H/V)	Antenna Gain Correction (dB)	Cable Loss (dB)	Amplifier (dB)	Corrected Reading (dBm)	Limit (dBm)	Margin (dB)
3700.4	-31.62	149	118	V	10	3.84	0	-25.46	-13	-12.46
3700.4	-32.07	137	234	H	10	3.84	0	-25.91	-13	-12.91
5550.6	-35.59	152	169	V	11.6	5.50	0	-29.49	-13	-16.49
5550.6	-35.93	146	245	H	11.6	5.50	0	-29.83	-13	-16.83

### Middle channel

Frequency (MHz)	Substituted level (dBm)	Direction (degree)	Height (cm)	Polarity (H/V)	Antenna Gain Correction (dB)	Cable Loss (dB)	Amplifier (dB)	Corrected Reading (dBm)	Limit (dBm)	Margin (dB)
3760	-31.08	135	255	V	10	4.17	0	-25.25	-13	-12.25
3760	-31.64	122	221	H	10	4.17	0	-25.81	-13	-12.81
5640	-35.77	167	183	V	11.6	5.61	0	-29.78	-13	-16.78
5640	-35.89	123	151	H	11.6	5.61	0	-29.90	-13	-16.90

### High channel

Frequency (MHz)	Substituted level (dBm)	Direction (degree)	Height (cm)	Polarity (H/V)	Antenna Gain Correction (dB)	Cable Loss (dB)	Amplifier (dB)	Corrected Reading (dBm)	Limit (dBm)	Margin (dB)
3819.6	-30.90	114	108	V	10	4	0	-24.90	-13	-11.90
3819.6	-31.53	143	146	H	10	4	0	-25.53	-13	-12.53
5729.4	-35.18	155	193	V	11.7	5.84	0	-29.32	-13	-16.32
5729.4	-35.70	124	188	H	11.7	5.84	0	-29.84	-13	-16.84

## **5.7 §22.917(a) & §24.238(a) - Band Edge**

1. Conducted Measurement  
EUT was set for low, mid, high channel with modulated mode and highest RF output power.  
The spectrum analyzer was connected to the antenna terminal.
2. Conducted Emissions Measurement Uncertainty  
All test measurements carried out are traceable to national standards. The uncertainty of the measurement at a confidence level of approximately 95% (in the case where distributions are normal), with a coverage factor of 2, in the range 30MHz – 40GHz is  $\pm 1.5\text{dB}$ .
3. Environmental Conditions
 

Temperature	15°C
Relative Humidity	50%
Atmospheric Pressure	1019mbar
4. Test date : January 14, 2013  
Tested By : Eaton Wang

### **Standard Requirement:**

The power of any emission outside of the authorized operating frequency ranges must be lower than the transmitter power (P) by a factor of at least  $43 + 10 \log (P)$  dB.

### **Procedures:**

1. The EUT was connected to Spectrum Analyzer and Base Station via power divider.
2. The Band Edges of low and high channels for the highest RF powers were measured. Setting RBW as roughly BW/100.

### **Test Result: Pass**

Note: the following test data please refer to report 12070366-FCC-R1.

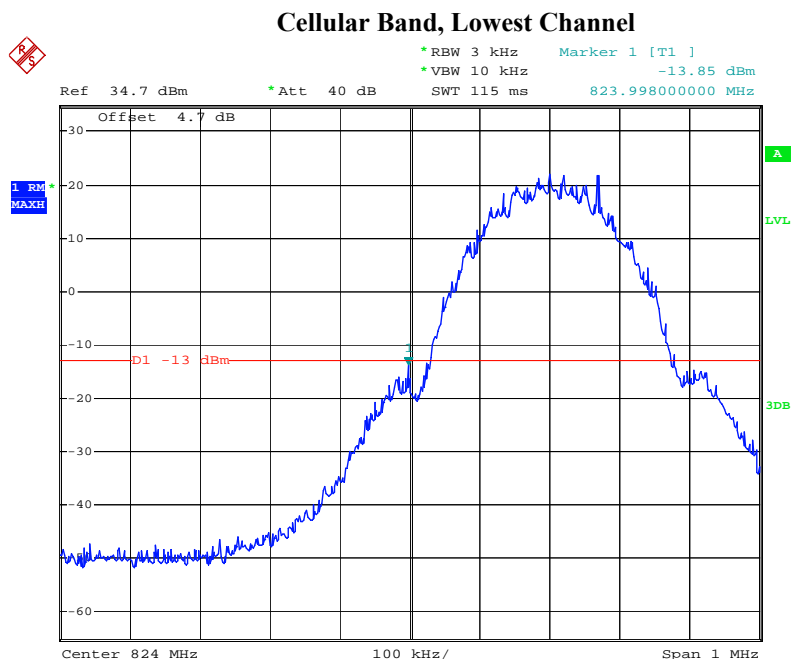
Refer to the attached plots.

#### **Cellular Band (Part 22H)**

Frequency (MHz)	Emission (dBm)	Limit (dBm)
823.9950	-13.85	-13
849.0075	-15.73	-13

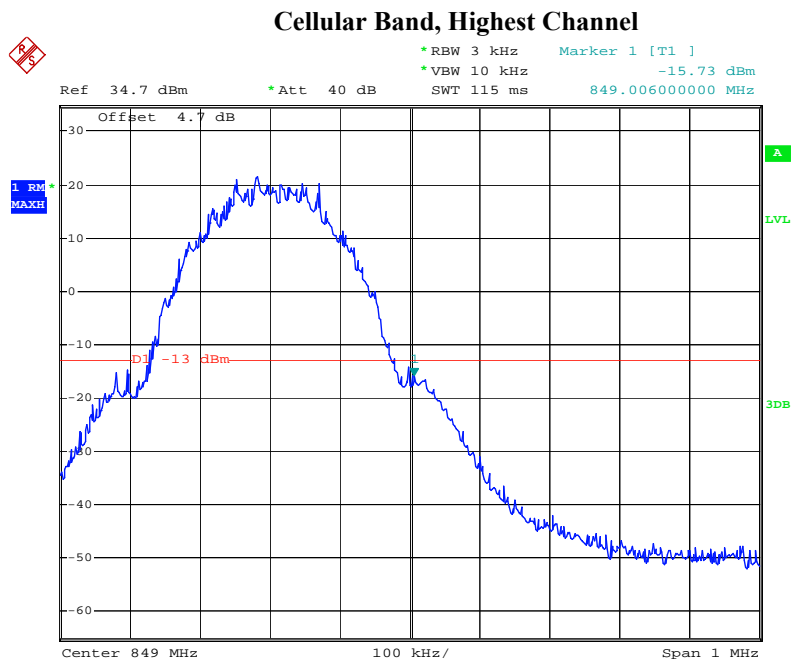
#### **PCS Band (Part 24E)**

Frequency (MHz)	Emission (dBm)	Limit (dBm)
1849.9950	-18.38	-13
1910.0175	-18.29	-13



Date: 14.JAN.2013 15:09:08

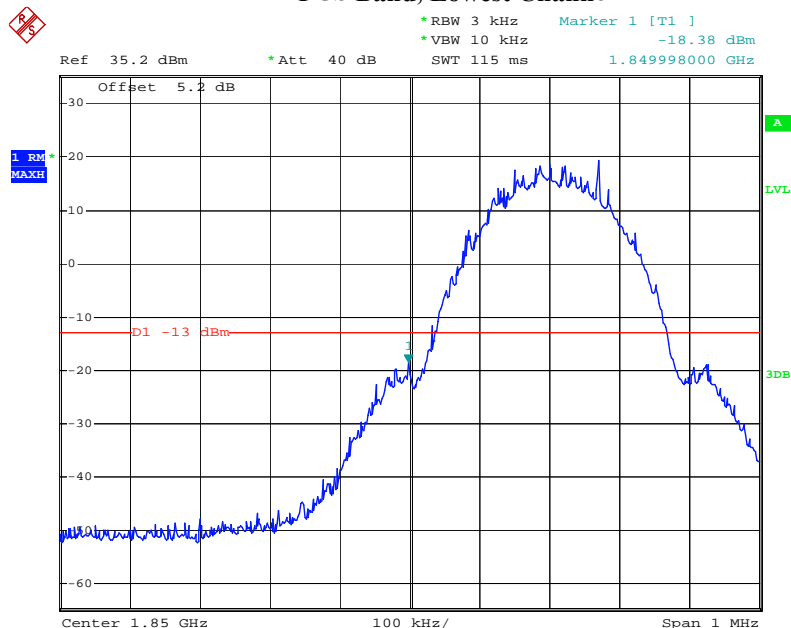
Note: Offset=Cable loss (4.5) + 10log (3.20/3)=4.5+0.2=4.7 dB



Date: 14.JAN.2013 15:07:31

Note: Offset=Cable loss (4.5) + 10log (3.14/3)=4.5+0.2=4.7 dB

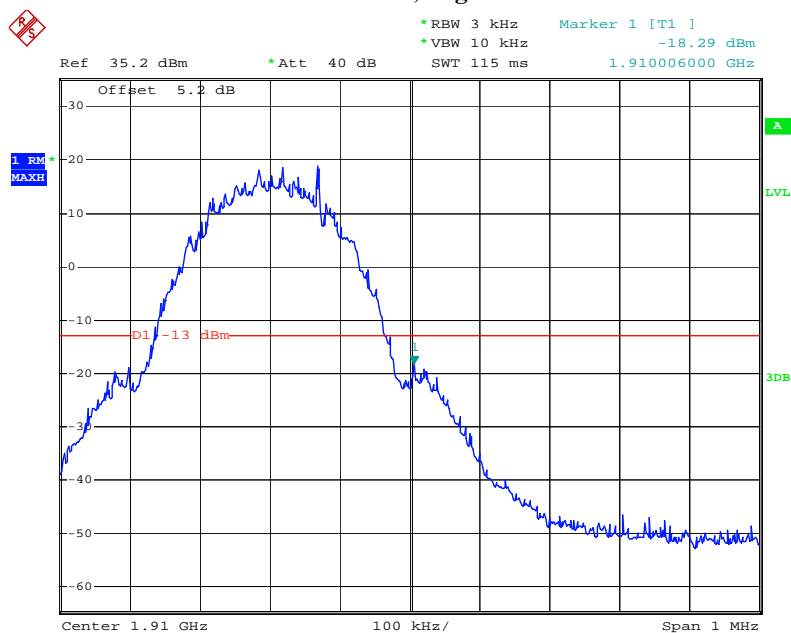
### PCS Band, Lowest Channel



Date: 14.JAN.2013 13:50:14

Note: Offset=Cable loss (5.0) + 10log (3.18/3)=5.0+0.2=5.2 dB

### PCS Band, Highest Channel



Date: 14.JAN.2013 13:53:35

Note: Offset=Cable loss (5.0) + 10log (3.20/3)=5.0+0.2=5.2 dB

## **5.8 §2.1055, §22.355 & §24.235 - Frequency Stability**

- |    |                              |                      |          |
|----|------------------------------|----------------------|----------|
| 1. | Environmental Conditions     | Temperature          | 15°C     |
|    |                              | Relative Humidity    | 50%      |
|    |                              | Atmospheric Pressure | 1019mbar |
| 2. | Test date : January 14, 2013 |                      |          |
|    | Tested By : Eaton Wang       |                      |          |

### **Standard Requirement:**

According to §22.355, the carrier frequency of each transmitter in the Public Mobile Services must be maintained within the tolerances given in Table below:

Frequency Tolerance for Transmitters in the Public Mobile Services

Frequency Range (MHz)	Base, fixed (ppm)	Mobile ≤ 3 watts (ppm)	Mobile ≤ 3 watts (ppm)
25 to 50	20.0	20.0	50.0
50 to 450	5.0	5.0	50.0
450 to 512	2.5	5.0	5.0
821 to 896	1.5	2.5	2.5
928 to 929.	5.0	N/A	N/A
929 to 960.	1.5	N/A	N/A
2110 to 2220	10.0	N/A	N/A

According to §24.235, the frequency stability shall be sufficient to ensure that the fundamental emissions stay within the authorized frequency block.

### **Procedures:**

A communication link was established between EUT and base station. The frequency error was monitored and measured by base station under variation of ambient temperature and variation of primary supply voltage.

Limit: The frequency stability of the transmitter shall be maintained within  $\pm 0.00025\%$  ( $\pm 2.5\text{ppm}$ ) of the center frequency.

### **Test Results: Pass**

Note: the following test data please refer to report 12070366-FCC-R1.

**Frequency Stability versus Temperature:** The Frequency tolerance of the carrier signal shall be maintained within 2.5ppm of the operating frequency over a temperature variation of -10°C to +55°C at normal supply voltage.

### Cellular Band (Part 22H)

Middle Channel, $f_0 = 836.6$ MHz				
Temperature (°C)	Power Supplied (V <sub>DC</sub> )	Frequency Error (Hz)	Frequency Error (ppm)	Limit (ppm)
-10	3.7	10	0.0120	2.5
0		3	0.0036	2.5
10		4	0.0048	2.5
20		5	0.0060	2.5
30		6	0.0072	2.5
40		7	0.0084	2.5
50		5	0.0060	2.5
55		4	0.0048	2.5
25	4.2	3	0.0036	2.5
	3.5	10	0.0120	2.5

### PCS Band (Part 24E)

Middle Channel, $f_0 = 1880$ MHz				
Temperature (°C)	Power Supplied (V <sub>DC</sub> )	Frequency Error (Hz)	Frequency Error (ppm)	Limit (ppm)
-10	3.7	35	0.0186	2.5
0		34	0.0181	2.5
10		33	0.0176	2.5
20		34	0.0181	2.5
30		34	0.0181	2.5
40		35	0.0186	2.5
50		33	0.0176	2.5
55		32	0.0170	2.5
25	4.2	33	0.0176	2.5
	3.5	35	0.0186	2.5

## **Annex A. TEST INSTRUMENT & METHOD**

### **Annex A.i. TEST INSTRUMENTATION & GENERAL PROCEDURES**

Instrument	Model	Serial #	Calibration Date	Calibration Due Date
<b>RF conducted test</b>				
Agilent ESA-E SERIES SPECTRUM ANALYZER	E4407B	CFG038	10/25/2012	10/24/2013
R&S EMI Receiver	ESPI3	101216	10/27/2012	10/26/2013
Power Splitter	1#	1#	02/02/2012	02/01/2013
Universal Radio Communication Tester	CMU200	104031	10/27/2012	10/26/2013
Pro.Temp.&Humi.Chamber	MHP-150-1C	MHA090510A	11/03/2012	11/02/2013
DC Power Supply	1786B	169D12111	N/A	N/A
<b>Radiated Emissions</b>				
Hp Spectrum Analyzer	8563E	3821A09023	01/10/2013	01/09/2014
R&S EMI Receiver	ESPI3	101216	10/27/2012	10/26/2013
Antenna (30MHz~6GHz)	JB6	A121411	12/27/2012	12/26/2013
EMCO Antenna(1 ~18GHz)	3115	N/A	10/29/2012	10/28/2013
INFOMW Antenna (1 ~18GHz)	JXTXLB-10180	J2031081120092	06/25/2012	06/24/2013
Horn Antenna (18~40GHz)	AH-840	101013	04/22/2012	04/22/2013
Microwave Pre-Amp (18~40GHz)	PA-840	181250	05/30/2012	05/29/2013
Hp Agilent Pre-Amplifier	8447F	1937A01160	11/03/2012	11/02/2013
MITEQ Pre-Amplifier (0.1 ~ 18GHz)	AMF-7D-00101800-30-10P	1451709	11/03/2012	11/02/2013
Universal Radio Communication Tester	CMU200	104031	10/27/2012	10/26/2013
Chamber	3m	N/A	04/13/2012	04/12/2013
SIEMIC Labview Radiated Emissions software	V1.0	N/A	N/A	N/A



## Annex A. ii. RADIATED EMISSIONS TEST DESCRIPTION

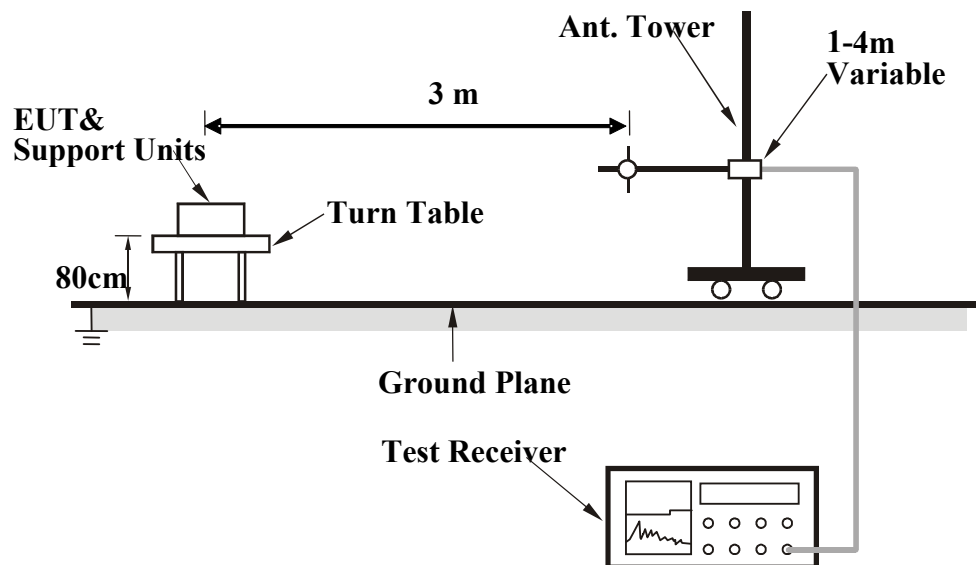
### EUT Characterisation

EUT characterisation, over the frequency range from 30MHz to 1GHz (for FCC tests, until the 10<sup>th</sup> harmonic for operating frequencies  $\geq 108\text{MHz}$ ), was done in order to minimise radiated emissions testing time while still maintaining high confidence in the test results.

The EUT was placed in the chamber, at a height of about 0.8m on a turntable. Its radiated emissions frequency profile was observed, using a spectrum analyzer /receiver with the appropriate broadband antenna placed 3m or 10m away from the EUT. Radiated emissions from the EUT were maximised by rotating the turntable manually, changing the antenna polarisation and manipulating the EUT cables while observing the frequency profile on the spectrum analyzer / receiver. Frequency points at which maximum emissions occurred, clock frequencies and operating frequencies were then noted for the formal radiated emissions test at the Open Area Test Site (OATS) or EMC 3m chamber.

### Test Set-up

1. The EUT and supporting equipment were set up in accordance with the requirements of the standard on top of a 1.5m X 1.0m X 0.8m high, non-metallic table.
2. The filtered power supply for the EUT and supporting equipment were tapped from the appropriate power sockets located on the turntable.
3. The relevant broadband antenna was set at the required test distance away from the EUT and supporting equipment boundary.



## **Test Method**

The following procedure was performed to determine the maximum emission axis of EUT:

1. With the receiving antenna is H polarization, rotate the EUT in turns with three orthogonal axes to determine the axis of maximum emission.
2. With the receiving antenna is V polarization, rotate the EUT in turns with three orthogonal axes to determine the axis of maximum emission.
3. Compare the results derived from above two steps. So, the axis of maximum emission from EUT was determined and the configuration was used to perform the final measurement.

### **Final Radiated Emission Measurement**

1. Setup the configuration according to figure 1. Turn on EUT and make sure that it is in normal function.
2. For emission frequencies measured below 1 GHz, a pre-scan is performed in a shielded chamber to determine the accurate frequencies of higher emissions will be checked on a open test site or EMC 10m chamber. As the same purpose, for emission frequencies measured above 1 GHz, a pre-scan also be performed with a 1 meter measuring distance before final test.
3. For emission frequencies measured below and above 1 GHz, set the spectrum analyzer on a 100 kHz and 1 MHz resolution bandwidth respectively for each frequency measured in step 2.
4. The search antenna is to be raised and lowered over a range from 1 to 4 meters in horizontally polarized orientation. Position the highness when the highest value is indicated on spectrum analyzer, then change the orientation of EUT on test table over a range from 0 ° to 360 ° with a speed as slow as possible, and keep the azimuth that highest emission is indicated on the spectrum analyzer. Vary the antenna position again and record the highest value as a final reading.
5. Repeat step 4 until all frequencies need to be measured were complete.
6. Repeat step 5 with search antenna in vertical polarized orientations.

During the radiated emission test, the Spectrum Analyzer was set with the following configurations:

Frequency Band (MHz)	Function	Resolution bandwidth	Video Bandwidth
30 to 1000	Peak	100 kHz	100 kHz
Above 1000	Peak	1 MHz	1 MHz
	Average	1 MHz	10 Hz

## **Description of Radiated Emission Program**

This EMC Measurement software run LabView automation software and offers a common user interface for electromagnetic interference (EMI) measurements. This software is a modern and powerful tool for controlling and monitoring EMI test receivers and EMC test systems. It guarantees reliable collection, evaluation, and documentation of measurement results. Basically, this program will run a pre-scan measurement before it proceeds with the final measurement. The pre-scan routine will run the scan on four different antenna heights, 2 antenna polarity, and 360 degrees table rotation. For example, the program was set to run 30 MHz to 1 GHz scan; the program will first start from a meter antenna height and divide the 30 MHz to 1 GHz into 10 separate parts of maximum hold sweeps. Each parts of maximum hold sweep, the program will collect the data from 0 degree to 360 degrees table rotation. After the program complete the 1m scan, the antenna continues to rise to 2m and continue the scan. The step will repeated for all specified antenna height and polarity. This program will perform the Quasi Peak measurement after the signal maximization process and pre-scan routine. The final measurement will be base on the pre-scan data reduction result.

## **Sample Calculation Example**

The field strength is calculated by adding the Antenna Factor and Cable Factor, and subtracting the Amplifier Gain (if any) from the measured reading. For the limit is employed average value, therefore the peak value can be transferred to average value by subtracting the duty factor. The basic equation with a sample calculation is as follows:

$$\text{Peak} = \text{Reading} + \text{Corrected Factor}$$

where

Corr. Factor = Antenna Factor + Cable Factor - Amplifier Gain (if any)

And the average value is

$$\begin{aligned} \text{Average} &= \text{Peak Value} + \text{Duty Factor or} \\ \text{Set RBW} &= 1\text{MHz, VBW} = 10\text{Hz.} \end{aligned}$$

Note:

If the measured frequencies are fall in the restricted frequency band, the limit employed must be quasi peak value when frequencies are below or equal to 1 GHz. And the measuring instrument is set to quasi peak detector function.

## **Annex B. EUT AND TEST SETUP PHOTOGRAPHS**

### **Annex B.i. Photograph 1: EUT External Photo**



Whole Package - Top View



EUT - Front View



EUT - Rear View





EUT - Top View



EUT - Bottom View



EUT - Left View



EUT - Right View

**Annex B.ii. Photograph 2: EUT Internal Photo**

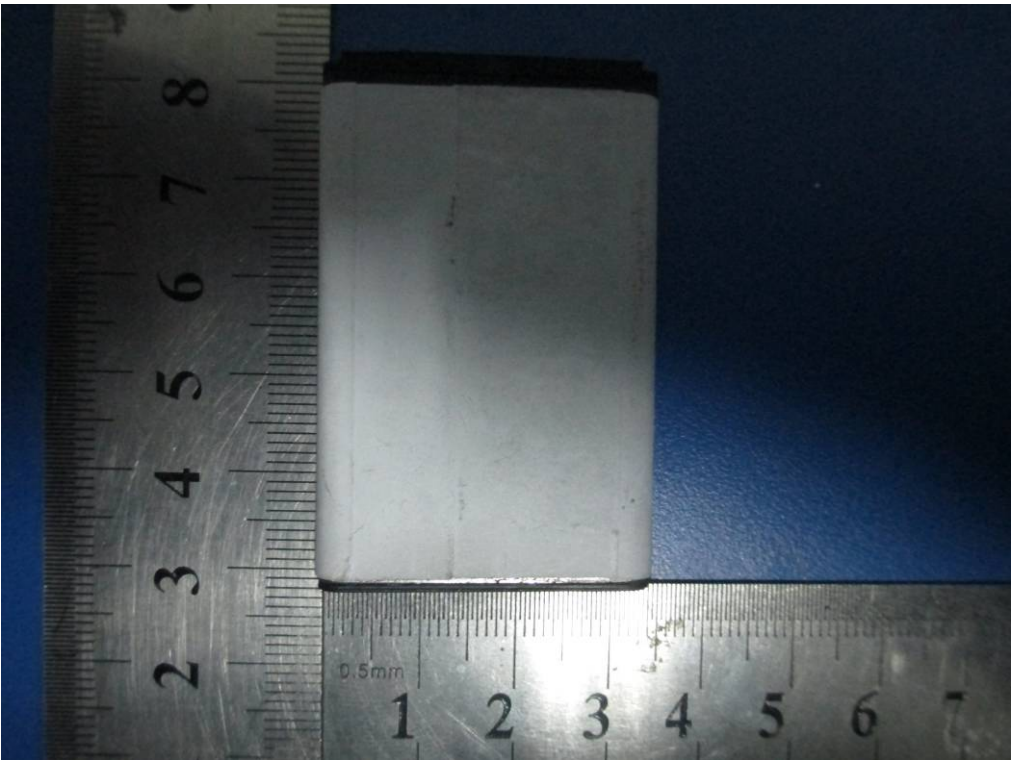


Cover Off - Top View

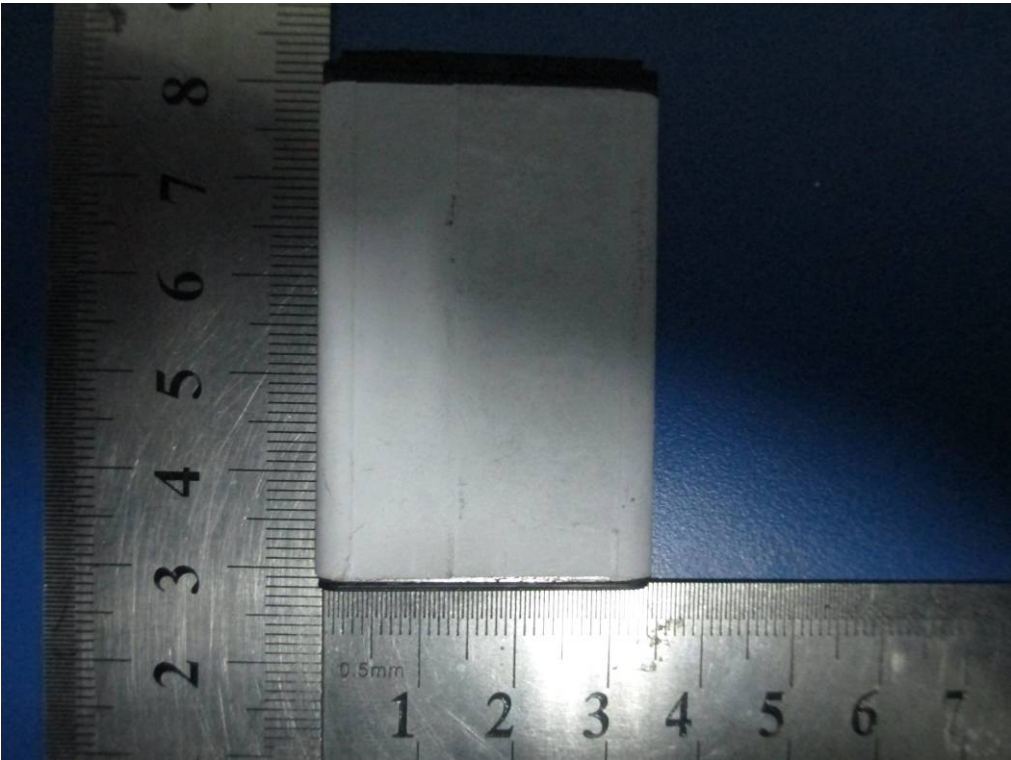


Cover Off - Bottom View



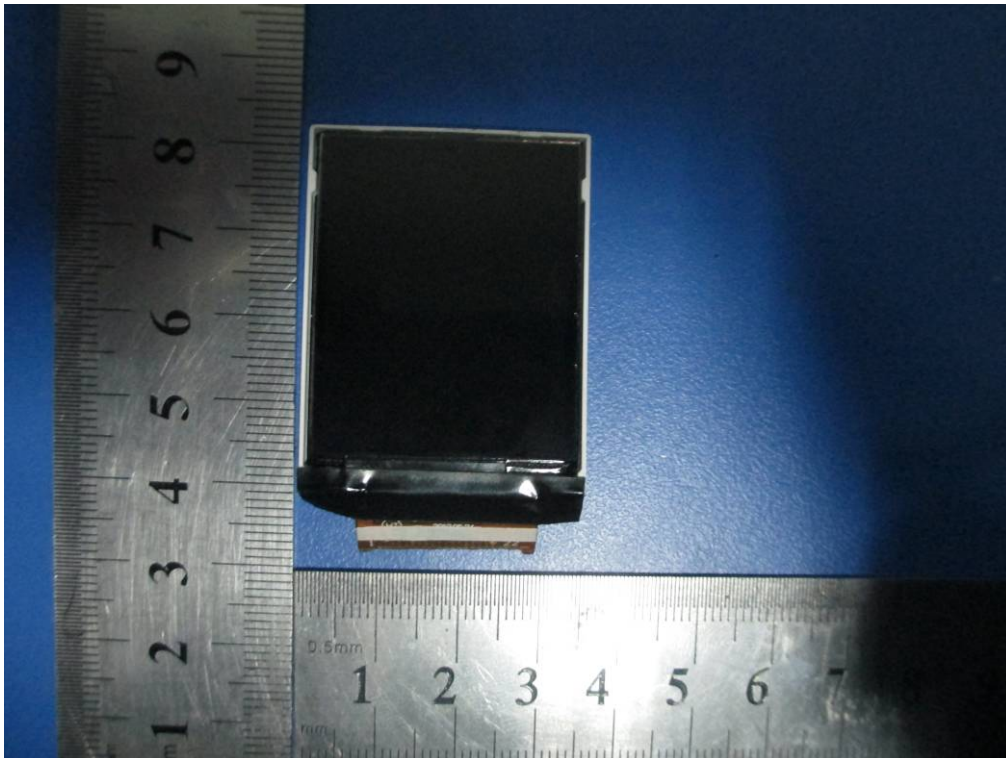


Battery - Top View

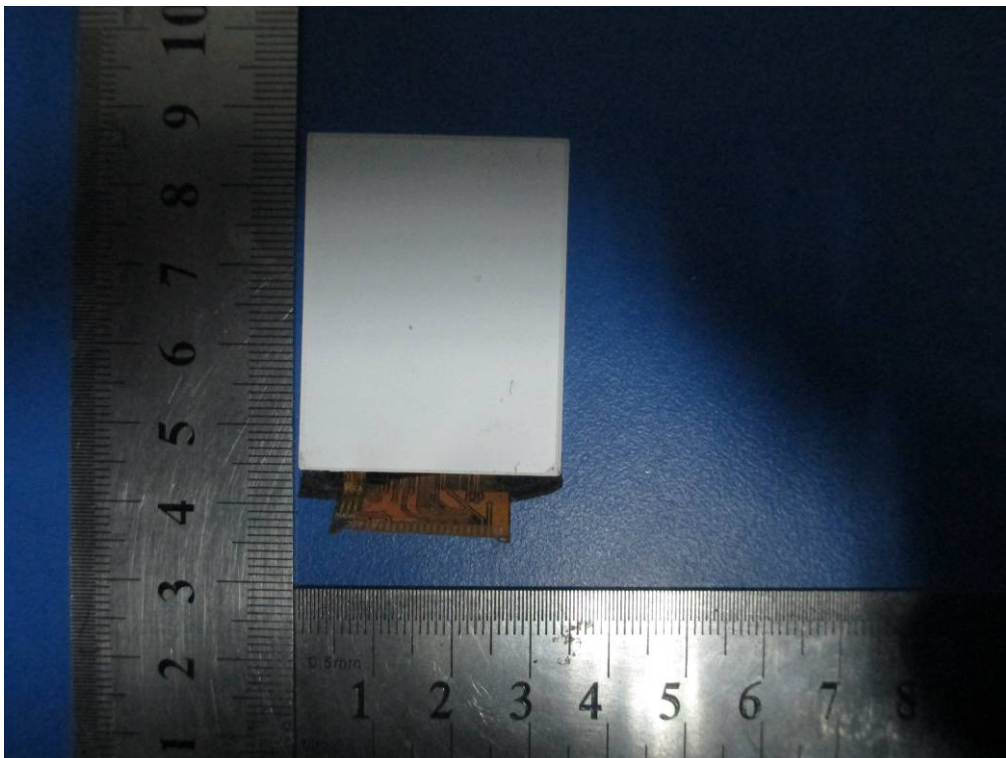


Battery - Bottom View





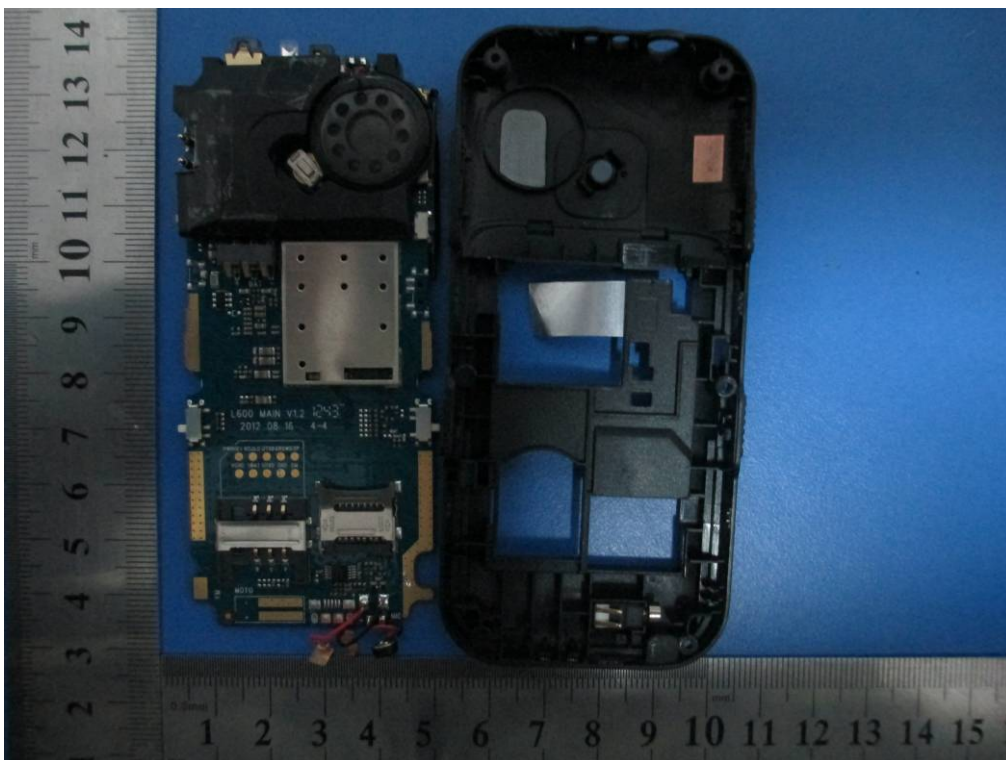
LCD - Top View



LCD - Bottom View

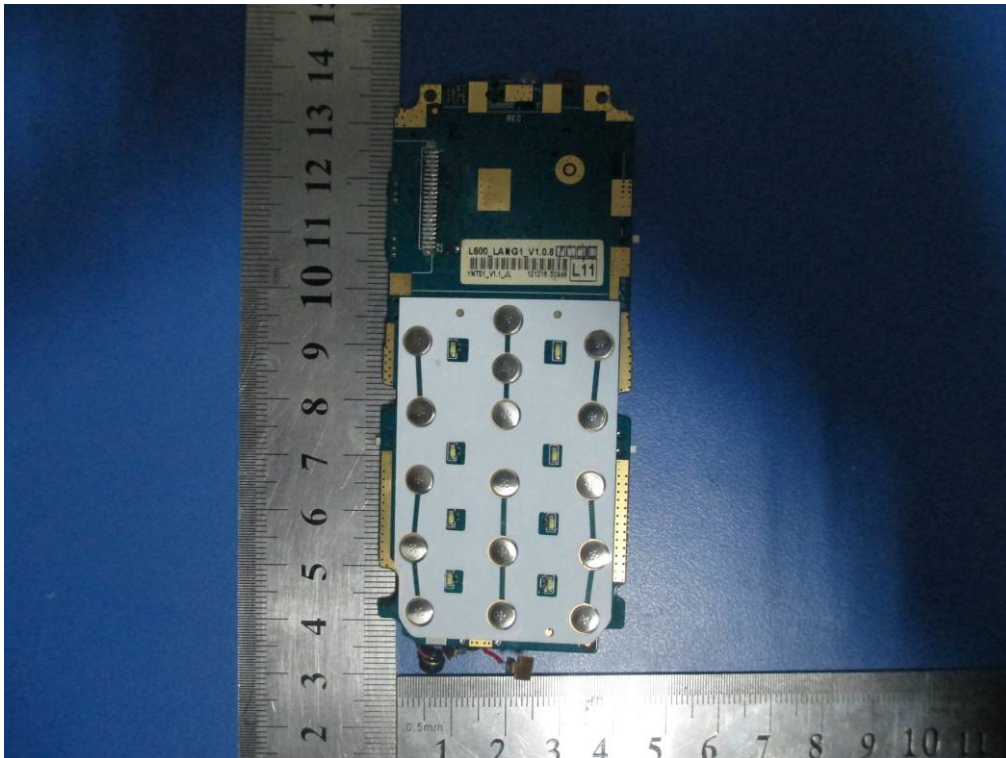


Uncover - Top View

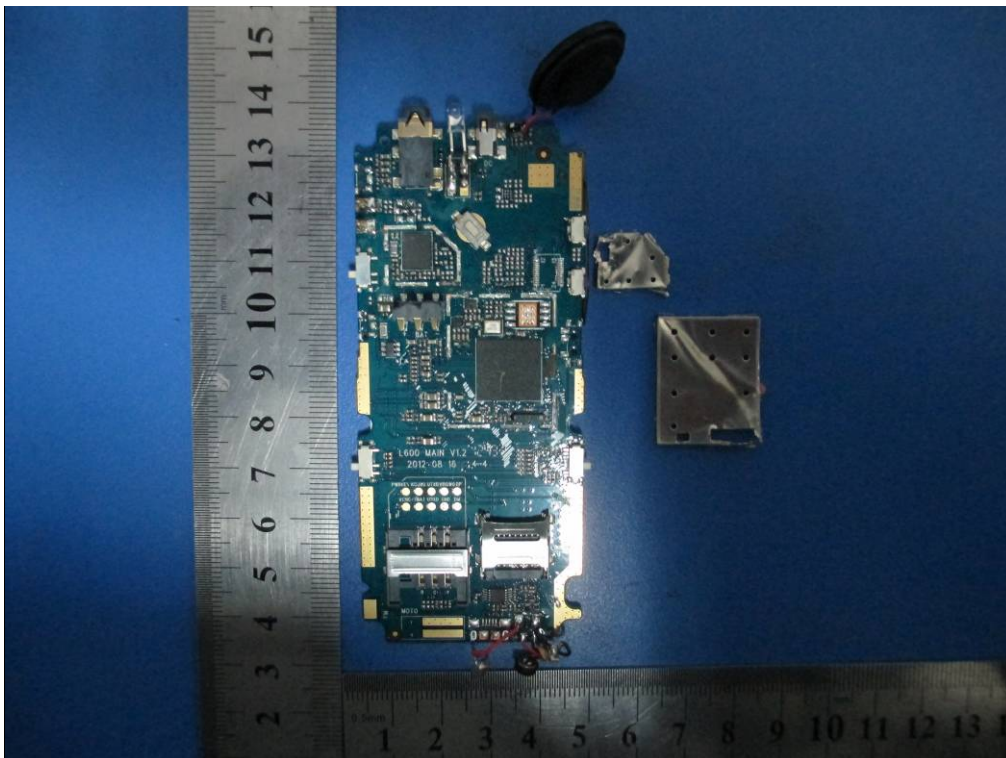


Uncover - Bottom View

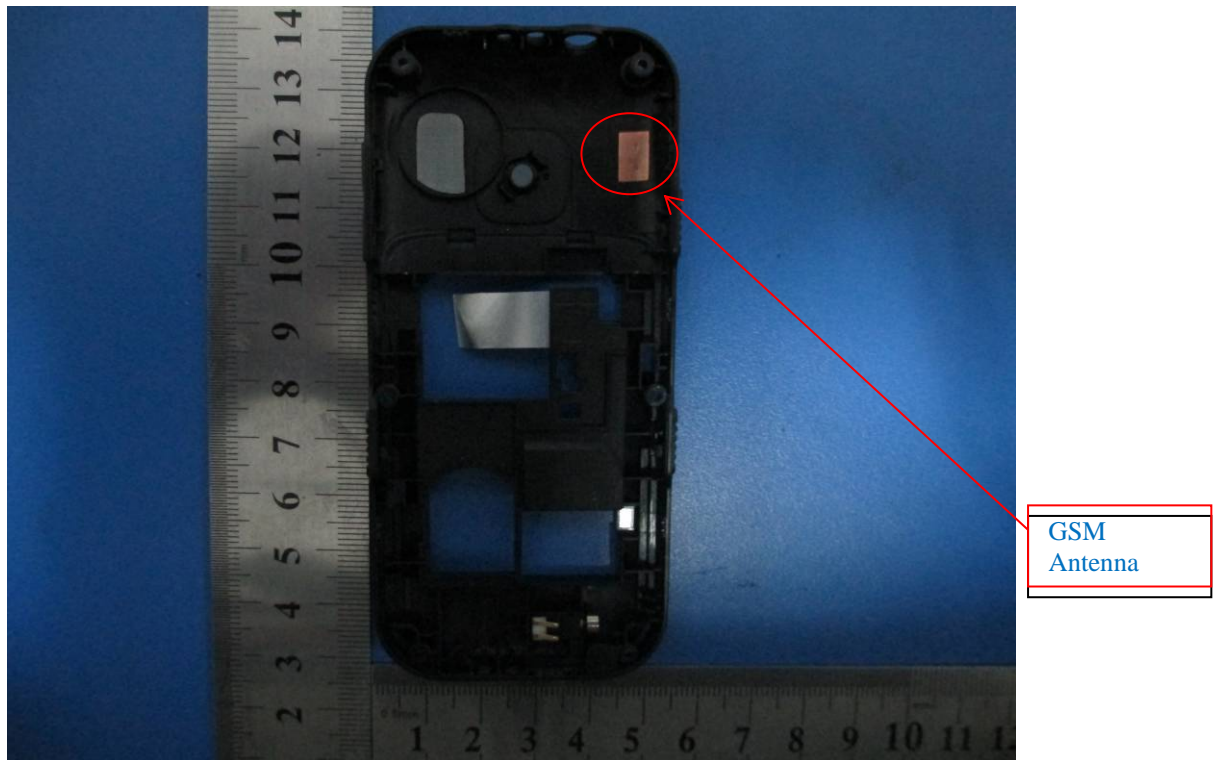




Uncover without LCD - Top View

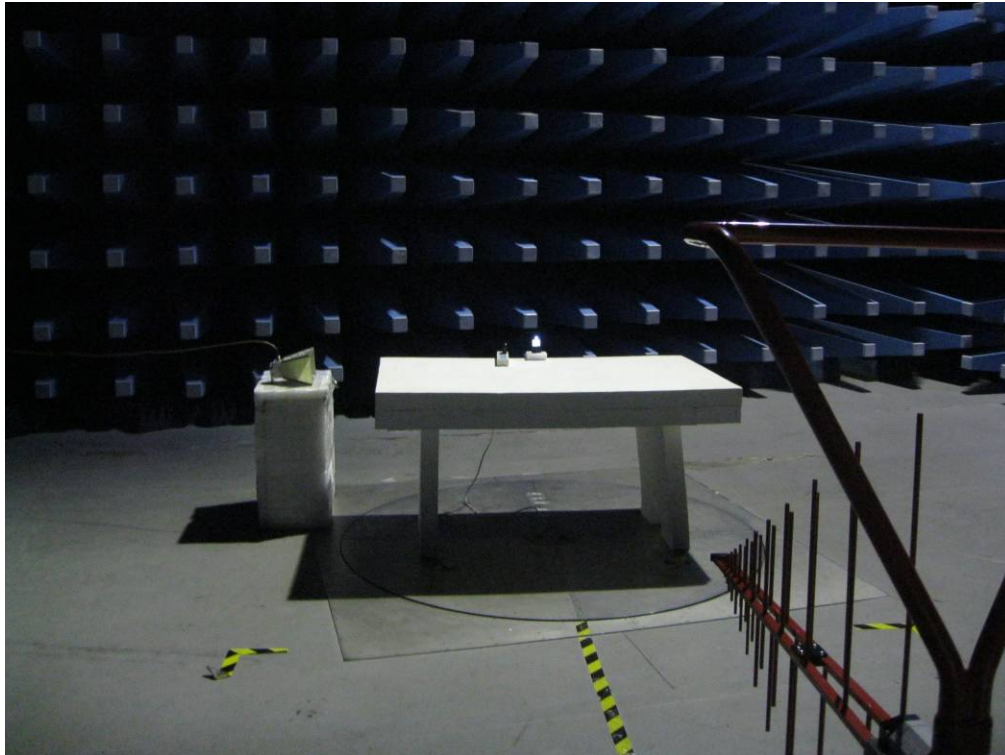


Uncover Without Shielding - Top View

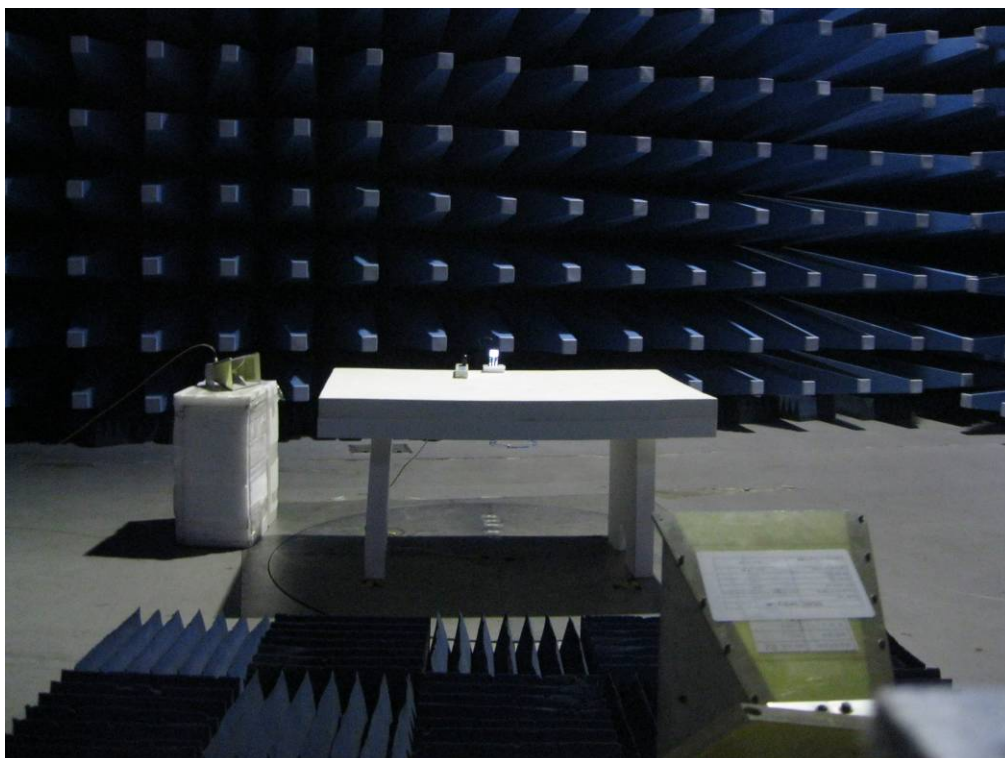


GSM Antenna Front View

**Annex B.iii. Photograph 3: Test Setup Photo**



Radiated Spurious Emissions Test Setup Below 1GHz - Front View



Radiated Spurious Emissions Test Setup Above 1GHz –Front View



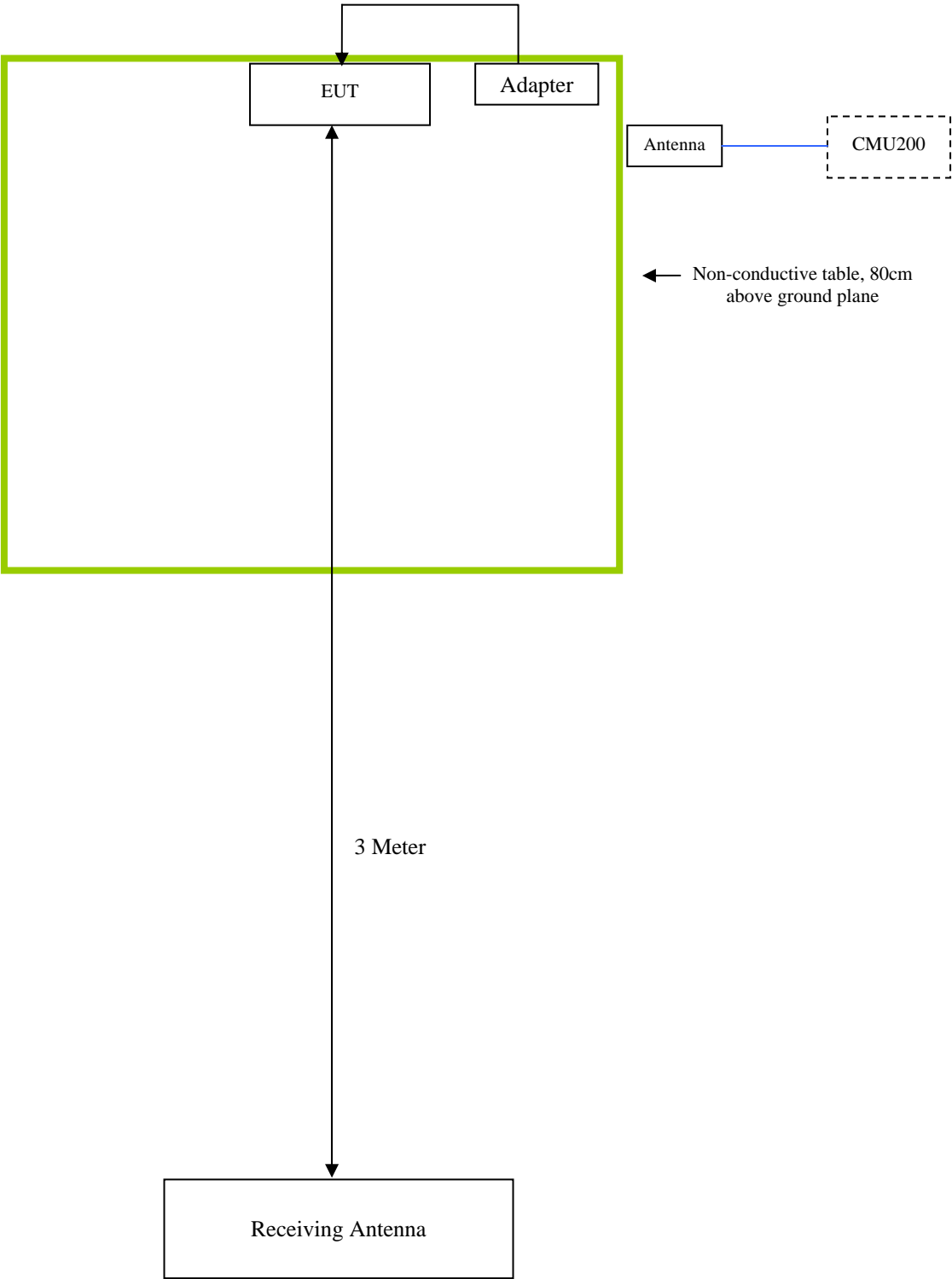
## **Annex C. TEST SETUP AND SUPPORTING EQUIPMENT**

### **EUT TEST CONDITIONS**

#### **Annex C. i. SUPPORTING EQUIPMENT DESCRIPTION**

The following is a description of supporting equipment and details of cables used with the EUT.

**Block Configuration Diagram for Radiated Emissions**



## **Annex C.ii. EUT OPERATING CONDITIONS**

The following is the description of how the EUT is exercised during testing.

Test	Description Of Operation
<b>Emissions Testing</b>	The EUT was communicating with base station and set to work at maximum output power.
<b>Others Testing</b>	The EUT was communicating with base station and set to work at maximum output power.



## **Annex D. USER MANUAL / BLOCK DIAGRAM / SCHEMATICS / PART LIST**

**Please see attachment**

## **Annex E. DECLARATION OF SIMILARITY**



To: SIEMIC, 775 Montague Expressway, Milpitas, CA 95035, USA

### **Declaration Letter**

Dear Sir,

We declare that there is no electrical change has been made to the equipment that alters the compliance characteristics. The difference between model S210 and original model LK-200 in the report 12070366 which was granted by SIEMIC are only different logo and color.

Thank you!

A handwritten signature in black ink, appearing to be "Nicole Zhao", written over a light blue rectangular background.

Signature:

Printed name/title: Nicole Zhao /Manager

Tel: 0755-83252600

Fax: 0755-82553682

Address: No.1301A, Building A, Hai song DaSha, Che Gong Miao, Futian District, Shenzhen P.R. China