

FIGURE 1
LCD TV (M/N: LD4088)
COVER REMOVED

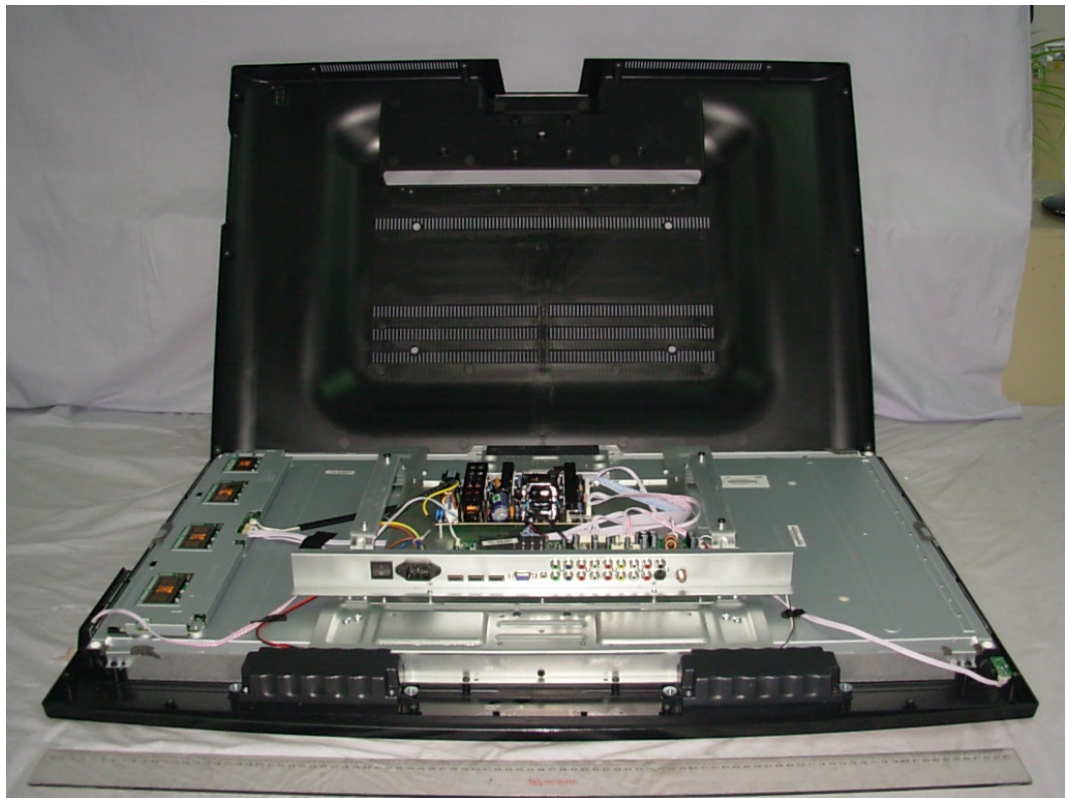


FIGURE 2
LCD TV (M/N: LD4088)
POWER BOARD (COMPONENT SIDE)

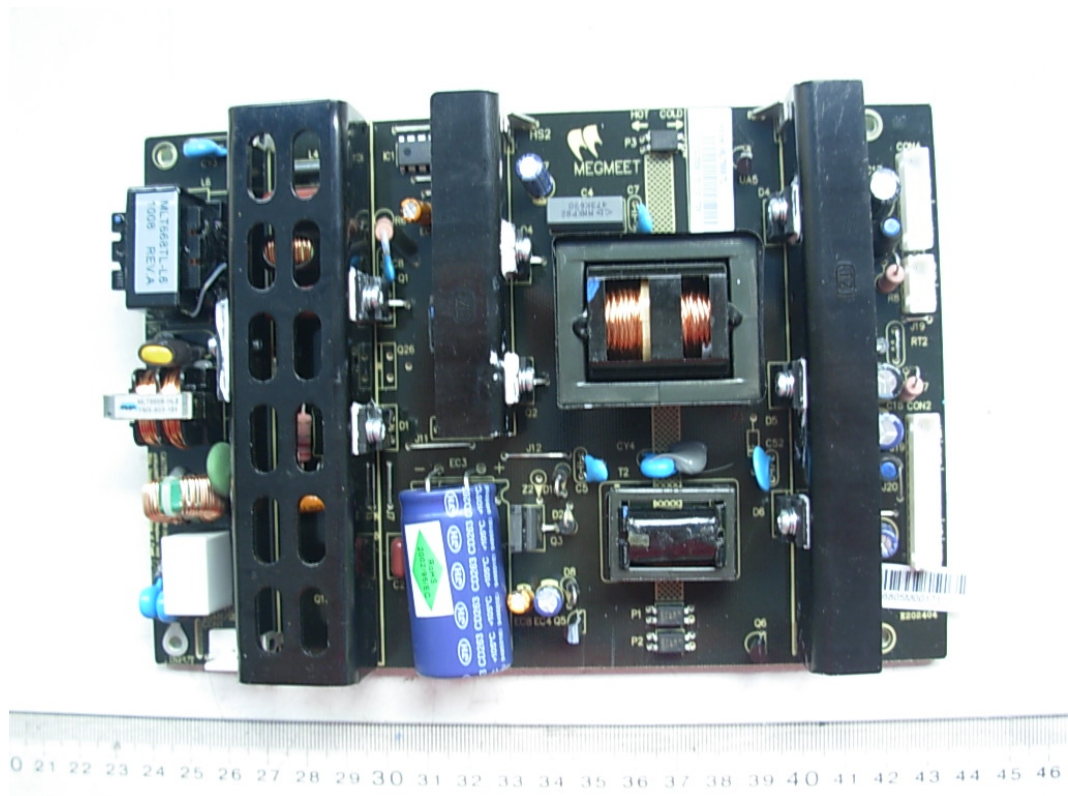


FIGURE 3
LCD TV (M/N: LD4088)
POWER BOARD (SOLDERED SIDE)

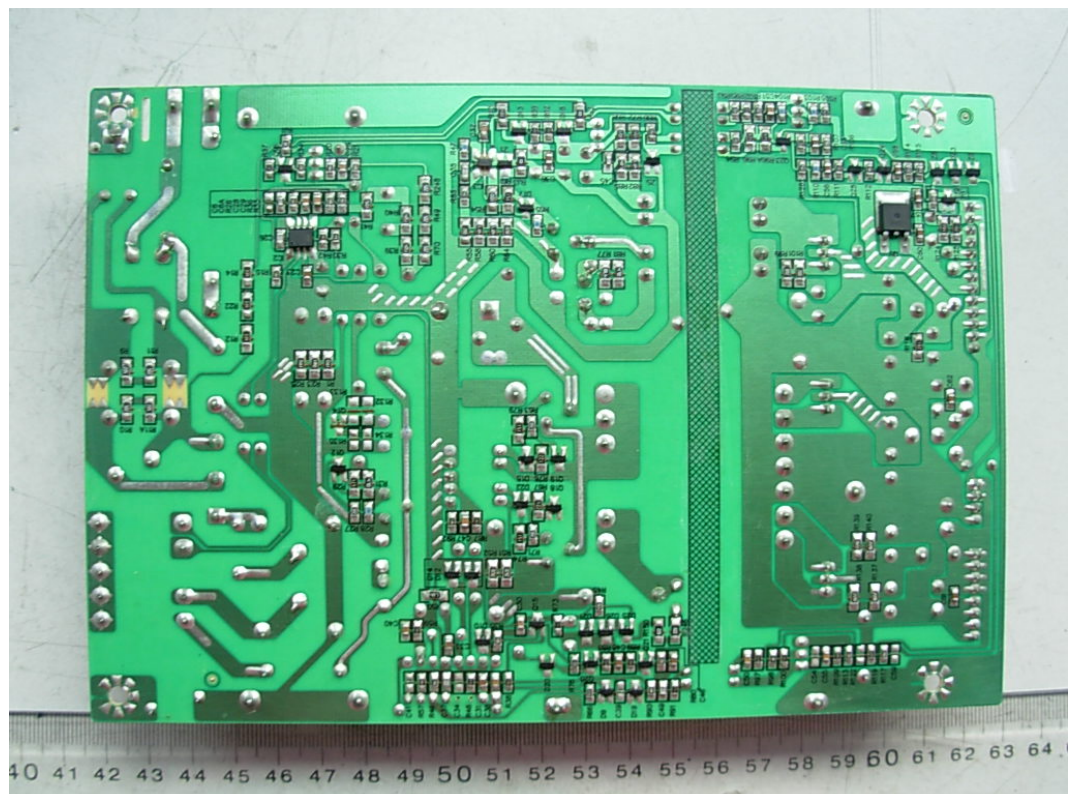


FIGURE 4
LCD TV (M/N: LD4088)
MAIN BOARD (COMPONENT SIDE)

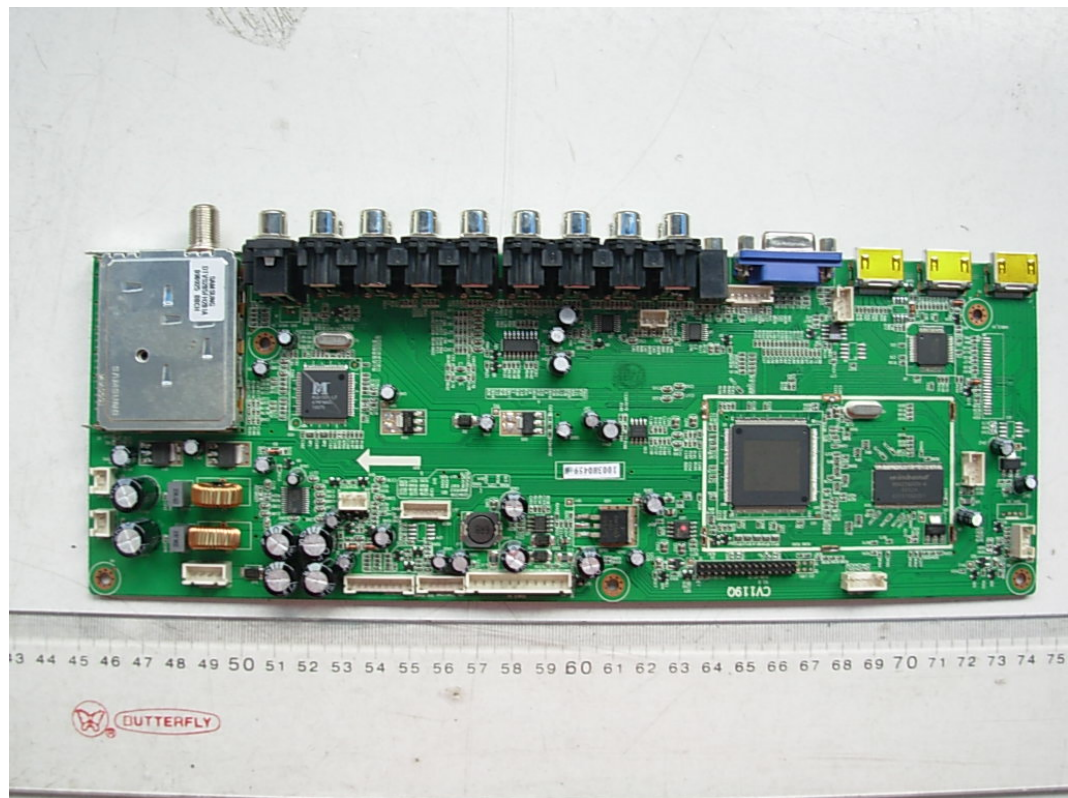


FIGURE 5
LCD TV (M/N: LD4088)
MAIN BOARD (SOLDERED SIDE)

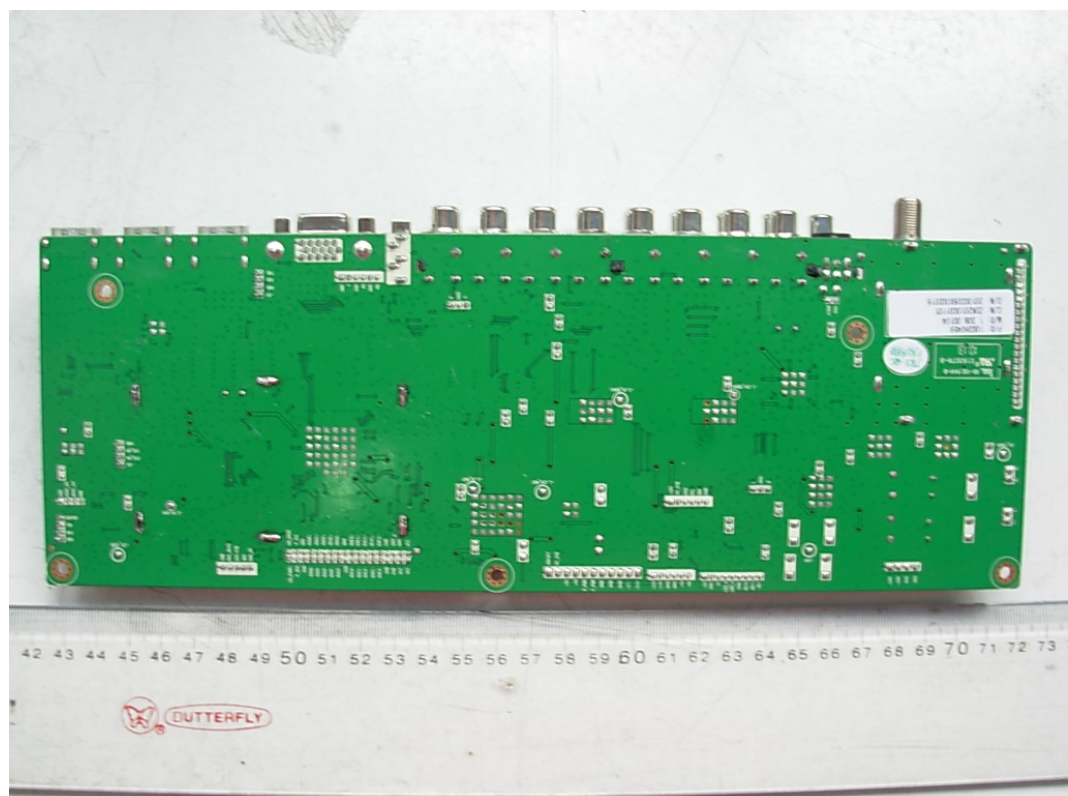


FIGURE 6
LCD TV (M/N: LD4088)
CHIP #1 & CRYSTAL #1 ON MAIN BOARD

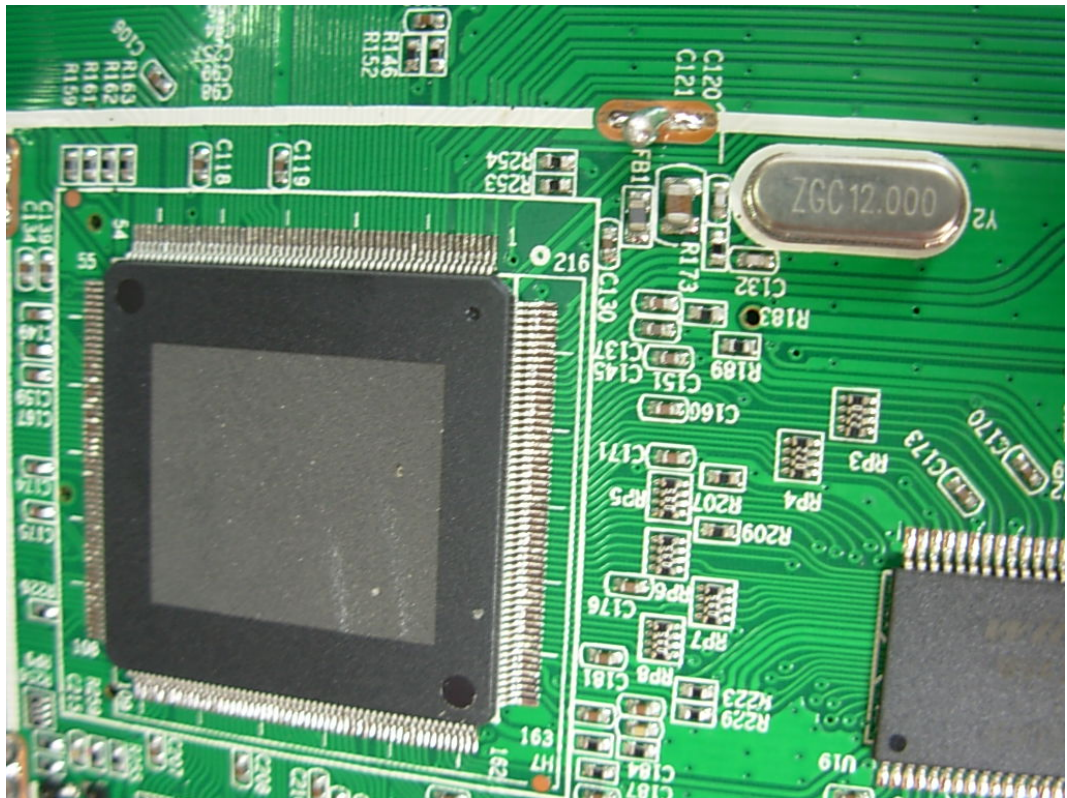


FIGURE 7
LCD TV (M/N: LD4088)
CHIP #2 & CRYSTAL #2 ON MAIN BOARD

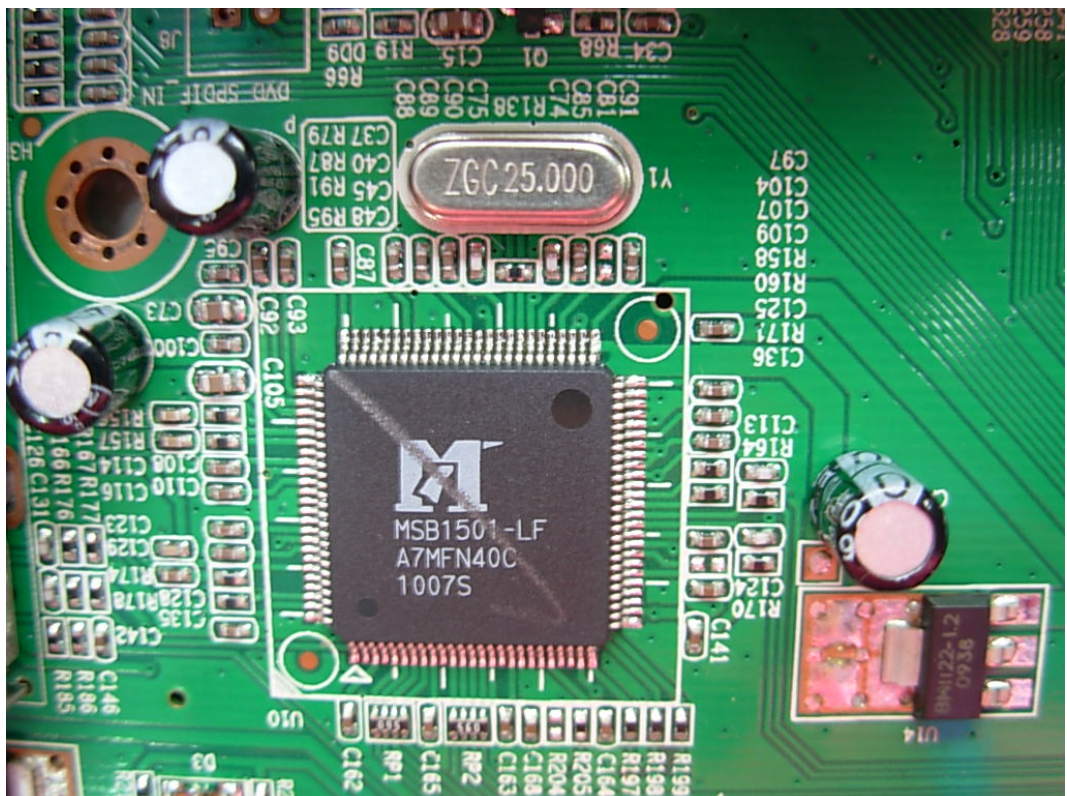


FIGURE 8
LCD TV (M/N: LD4088)
TUNER

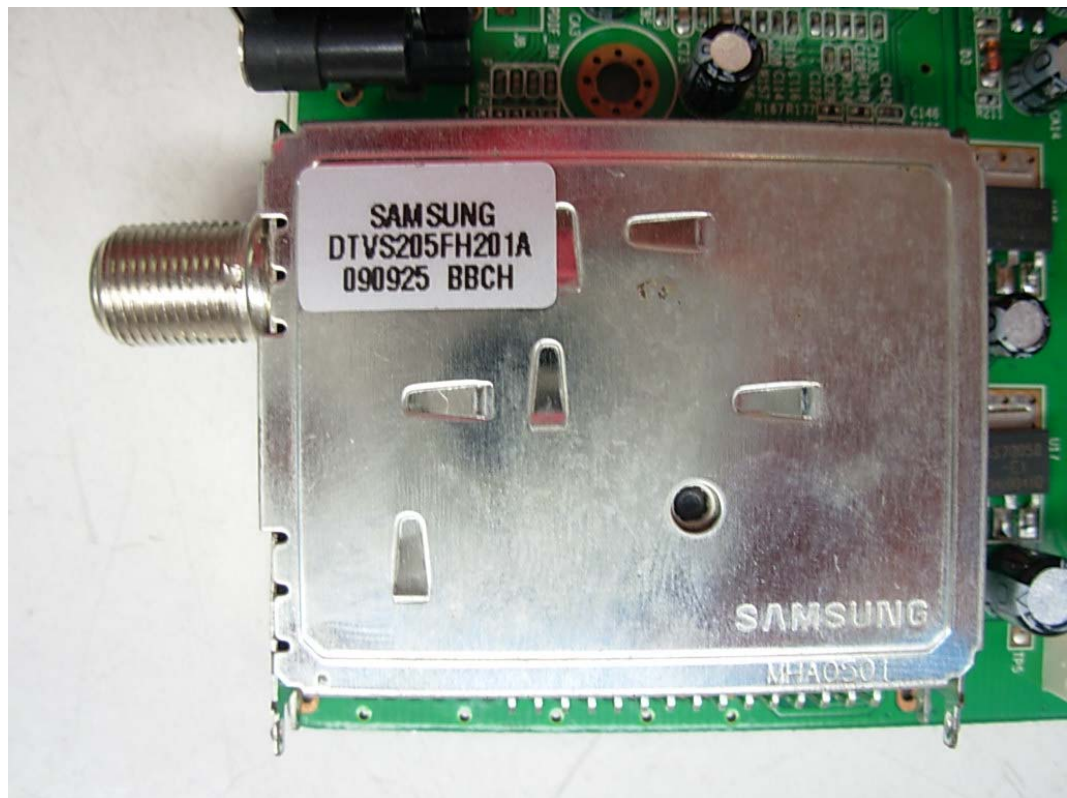


FIGURE 9
LCD TV (M/N: LD4088)
IR BOARD (COMPONENT SIDE)

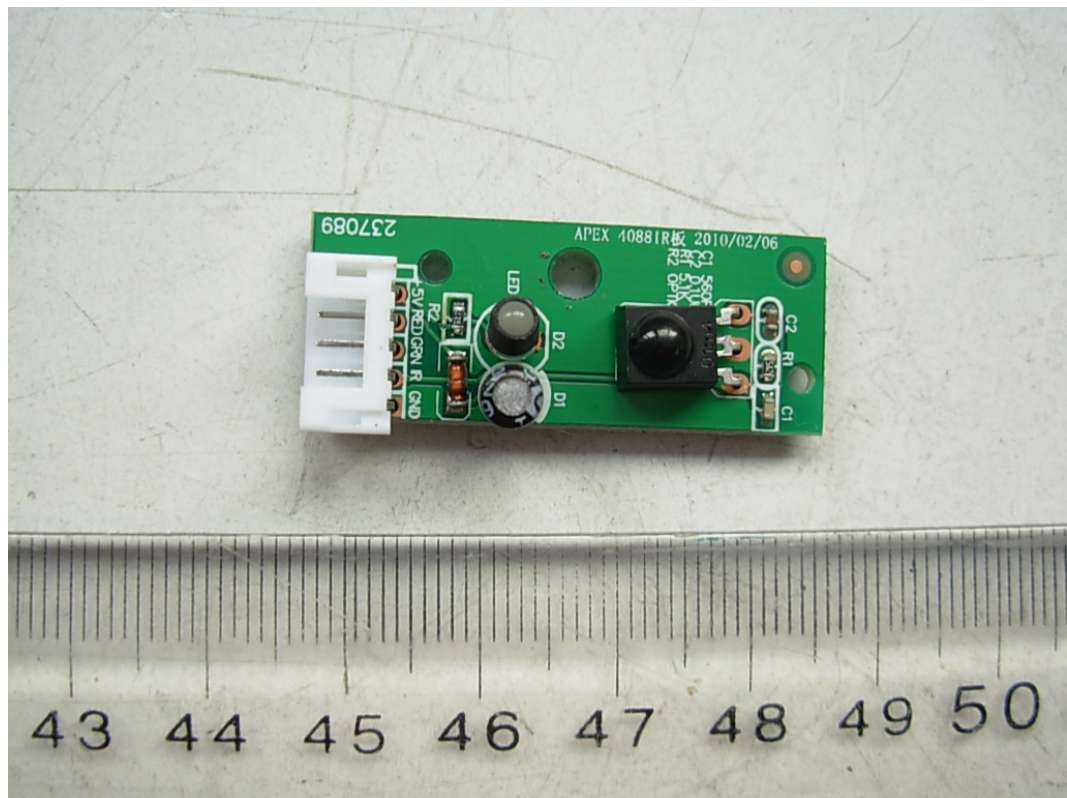


FIGURE 10
LCD TV (M/N: LD4088)
IR BOARD (SOLDERED SIDE)

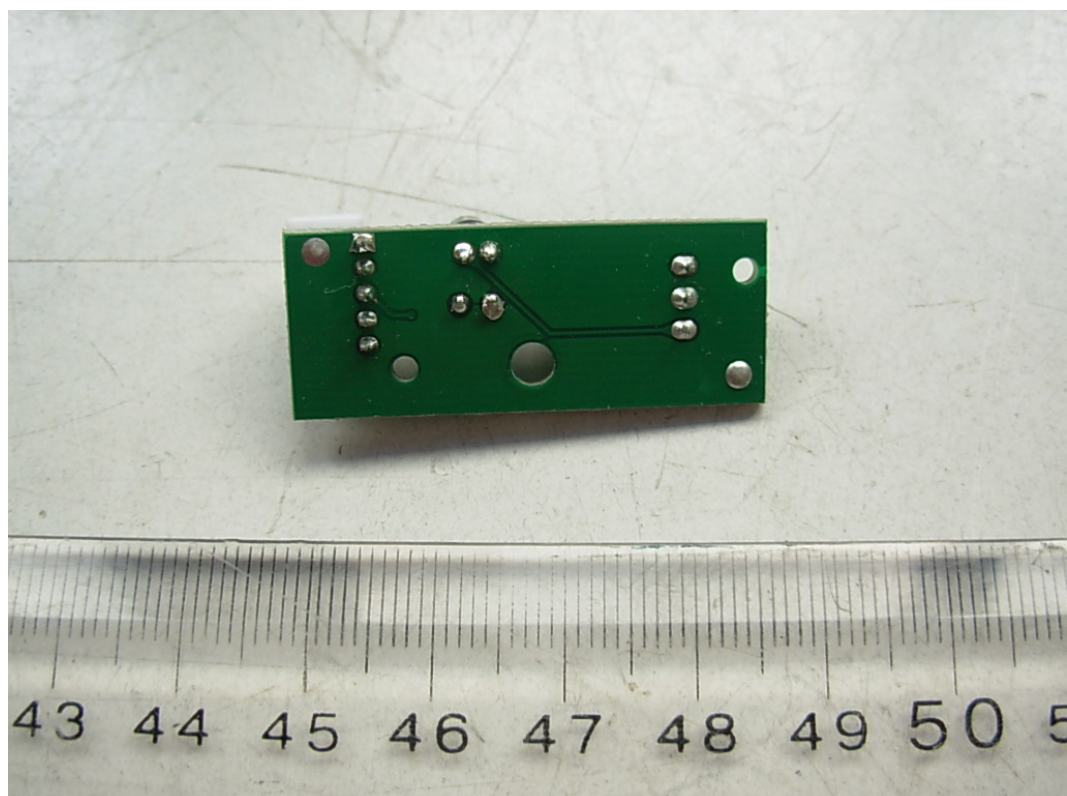


FIGURE 11
LCD TV (M/N: LD4088)
KEY BOARD (COMPONENT SIDE)

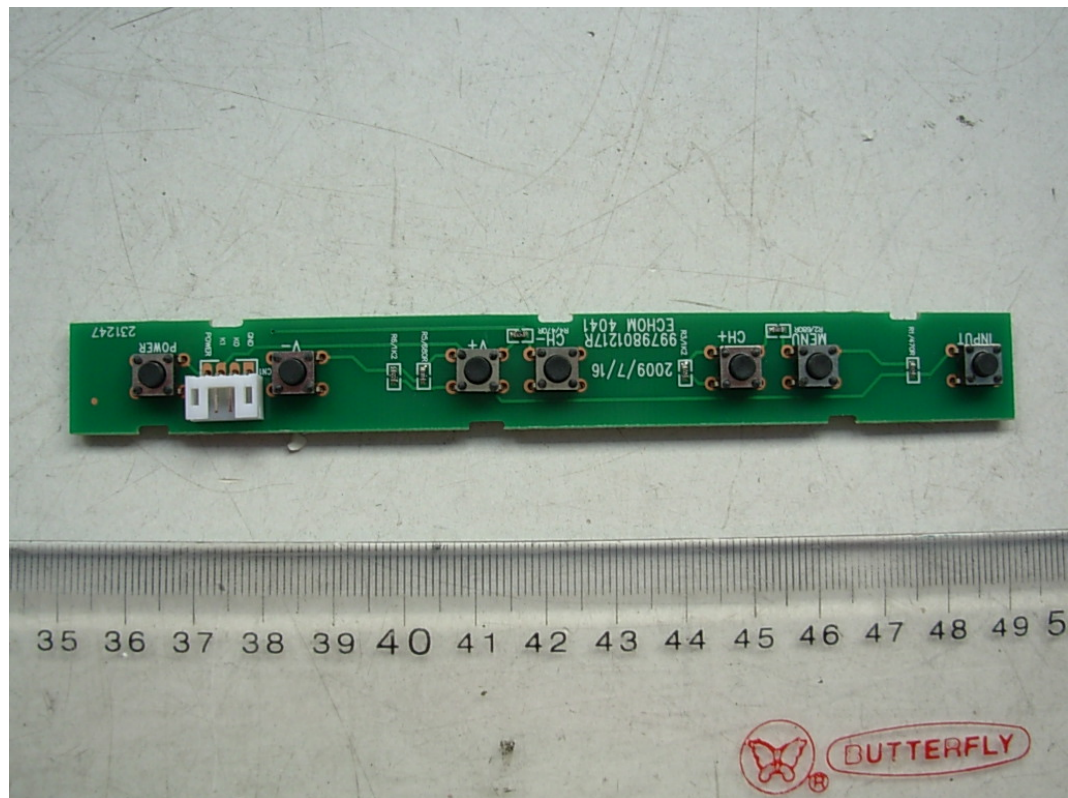


FIGURE 12
LCD TV (M/N: LD4088)
KEY BOARD (SOLDERED SIDE)

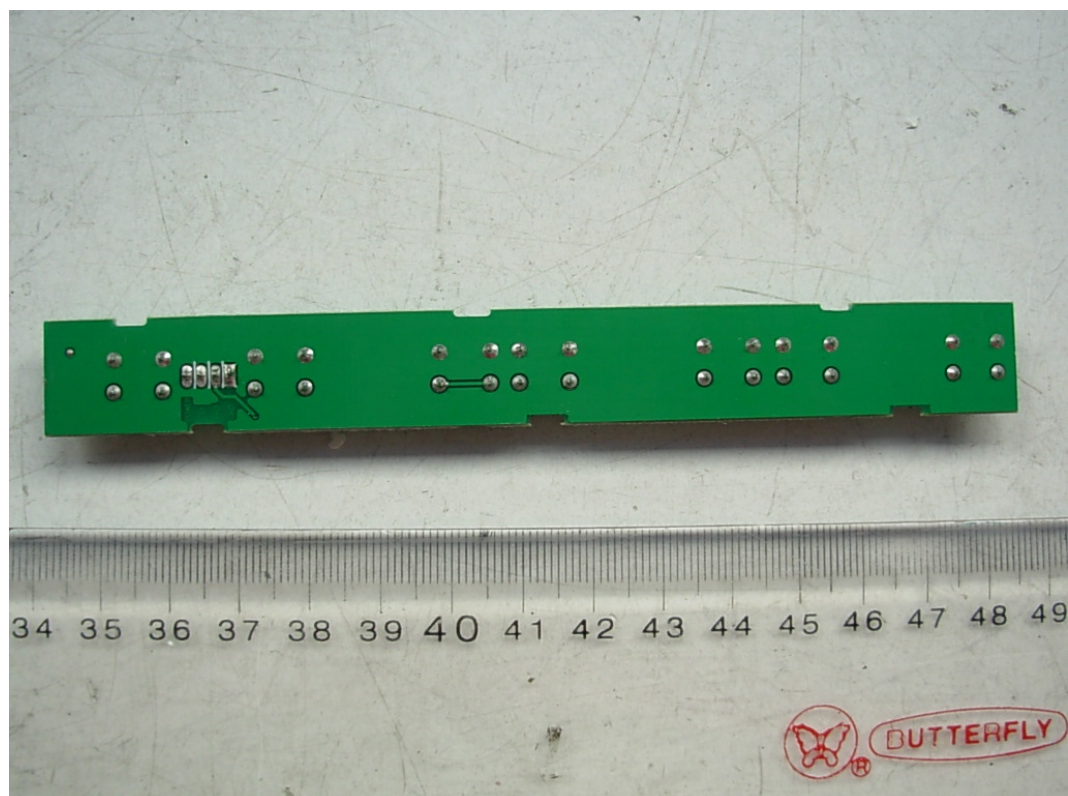


FIGURE 13
LCD TV (M/N: LD4088)
DISPLAY BOARD (COMPONENT SIDE)

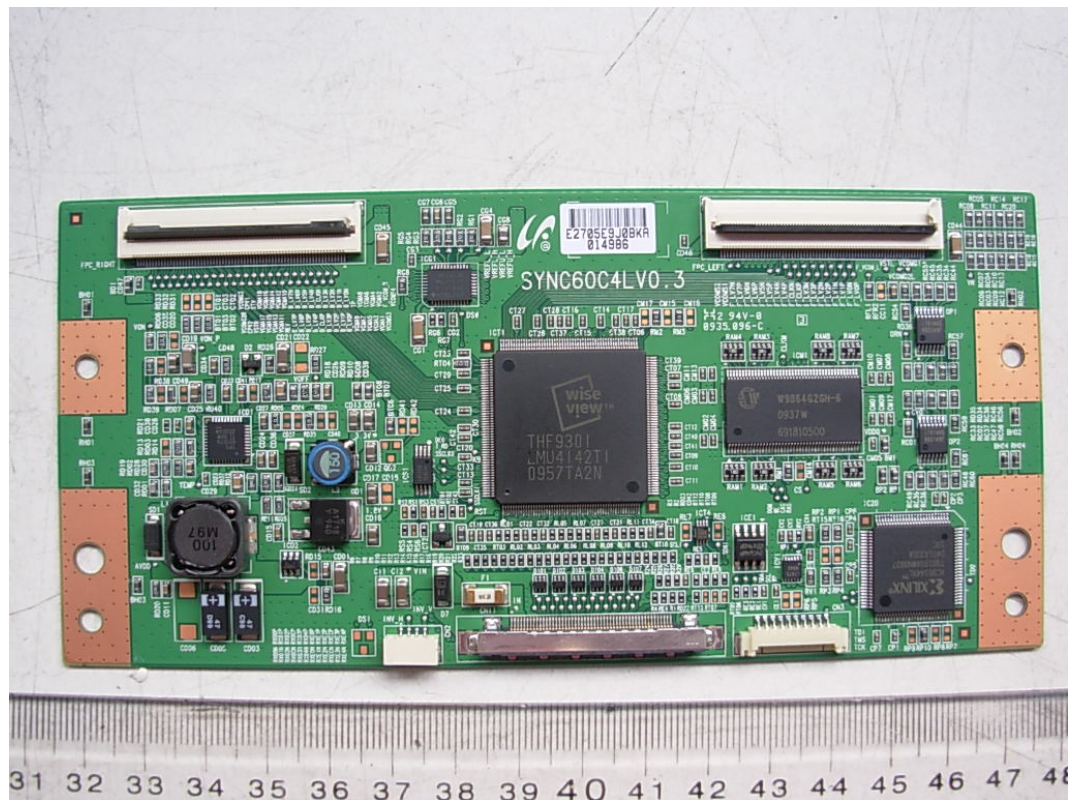


FIGURE 14
LCD TV (M/N: LD4088)
DISPLAY BOARD (SOLDERED SIDE)

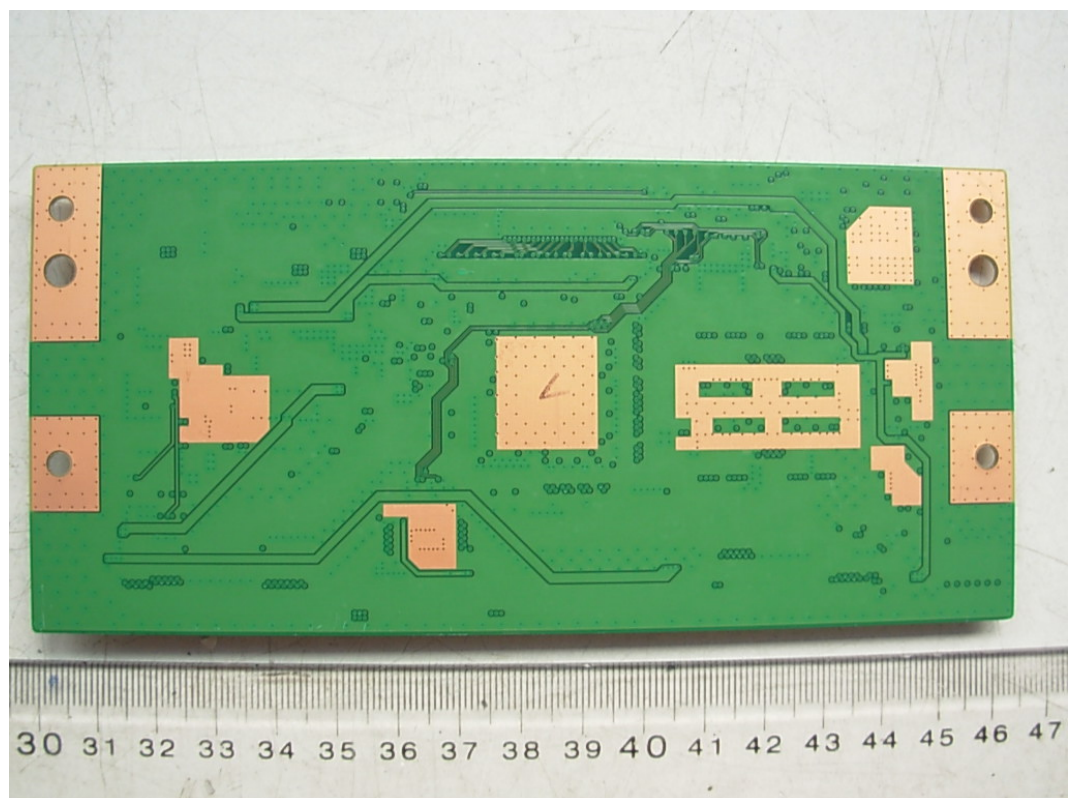


FIGURE 15
LCD TV (M/N: LD4088)
HIGH VOLTAGE SIGNAL BOARD (COMPONENT SIDE)

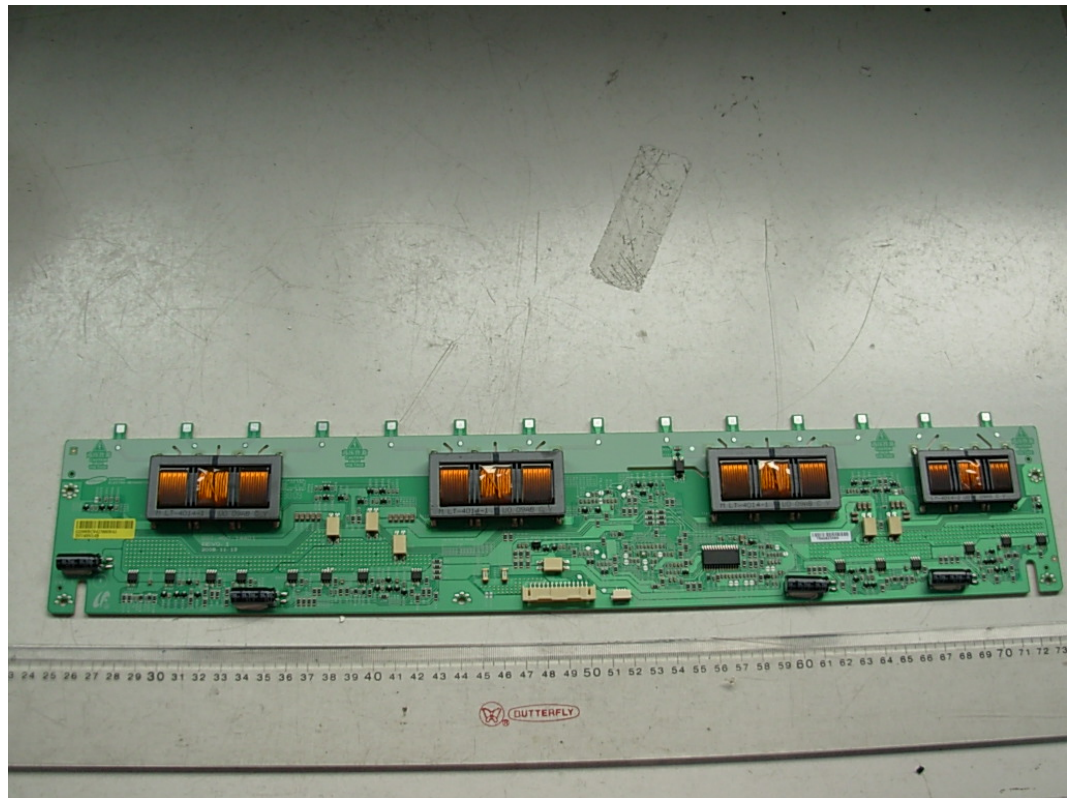


FIGURE 16
LCD TV (M/N: LD4088)
HIGH VOLTAGE SIGNAL BOARD (SOLDERED SIDE)

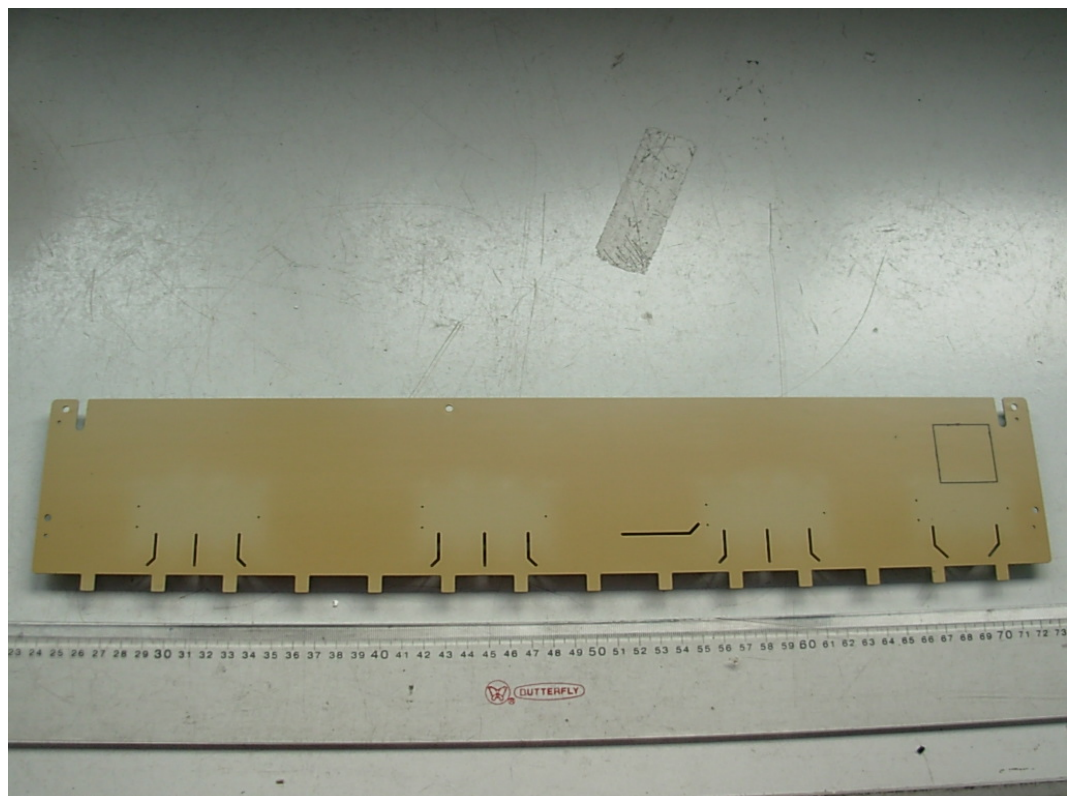


FIGURE 17
LCD TV (M/N: LD4088)
LABEL ON PANEL

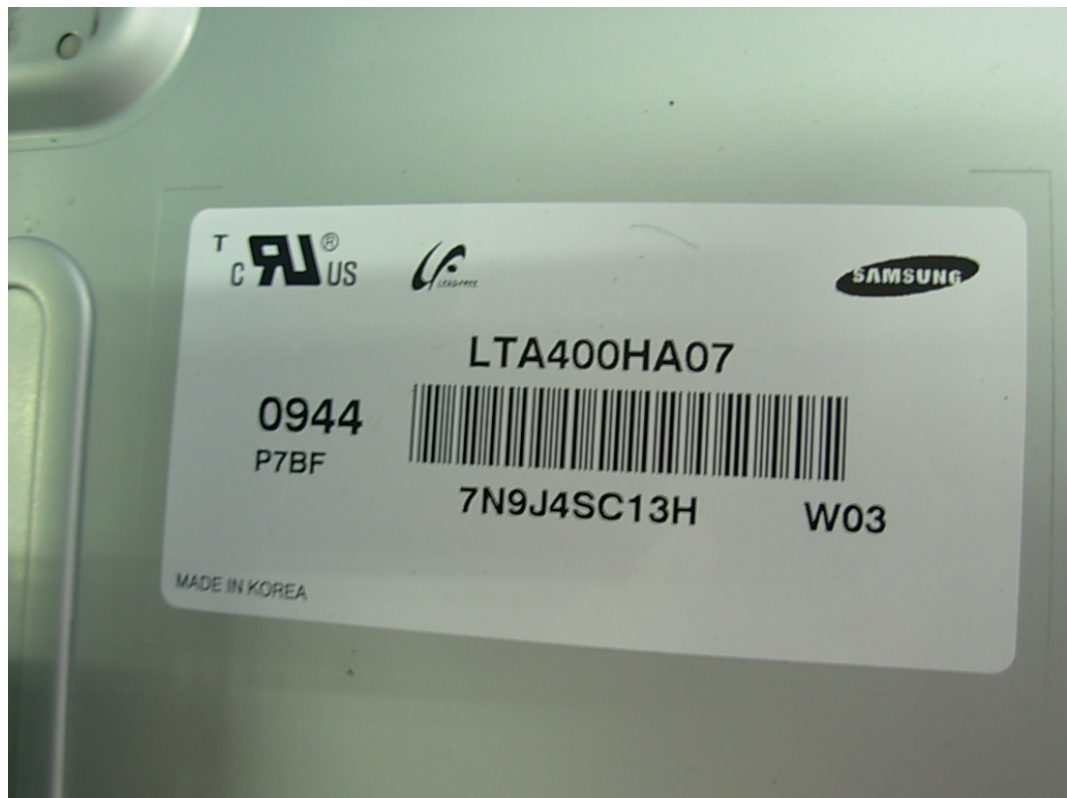


FIGURE 18
LCD TV (M/N: LD4088)
DEBUG

