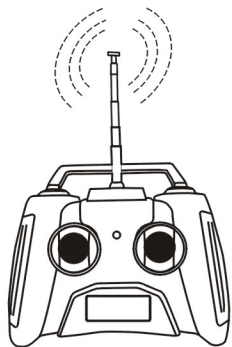


Before commencing assembly, Please read these instructions thoroughly

# ***B 1601 Real hovercraft***

## ***Powers over land and water on a cushion of air***



### **WARNING**

- 1) The product is only applicable to children over age 3 , and do not give the product to children out of the intended age.
- 2) During operation, do not subject fingers, hair and cloth to running fans or into the fan's protective hood.
- 3) Do not use the product in places with autos or ships to avoid danger.
- 4) Do not overcharge the rechargeable battery to avoid battery damage and even fire.
- 5) Do not throw rejected batteries into fire, which may otherwise trigger explosion.
- 6) changes or modifications not expressly approved by the party responsible for compliance could void the user s authority to operate the equipment

- Do not reproduce any part of this instruction manual by any method without the approval by the company.
- This instruction manual is subject to change without prior notice.
- This instruction manual is prepared with maximum possible care. Should you find any part requiring of modification or any part unexplained, Please contact Company.
- Keep this manual properly for reference after the assembly is finished.



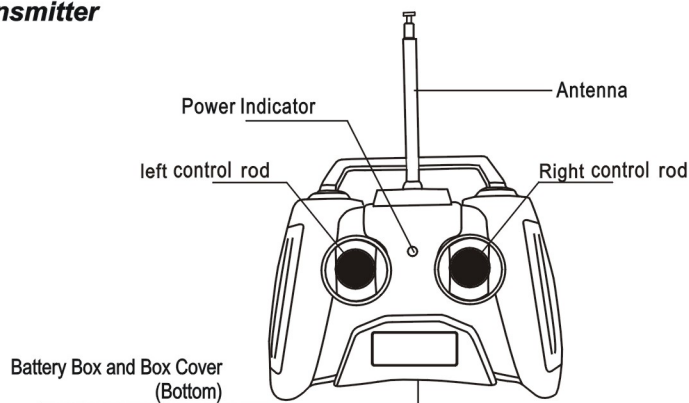
## PERFORMANCE INTRODUCTION

- 1) The B1601 hovercraft operates by blowing air into the gas envelope at the bottom of the ship through the high pressure air driven fan inside the ship body. Two powerful screw propellers are equipped for the ship to power the hovercraft and control its direction.
- 2) With superior performance, the B1601 hovercraft is able to run on both water surface and land, and it will bring you limitless fun!
- 3) The whole running process is controlled by remote radio controller, so as to provide users with entertainment and challenges.

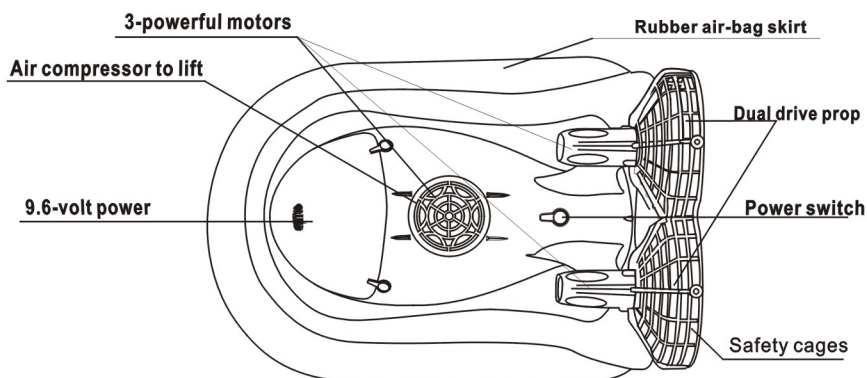


## PRODUCTION INTRODUCTION

### ① Transmitter



### ② Hovercraft

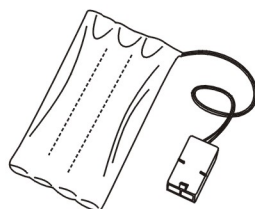


## ATTACHMENT

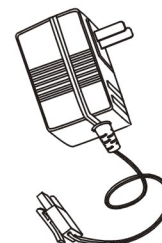
There are attachments with this product, please check before using. If anything is missing, please immediately contact the supplier.

Transmitter	: 1
Transmitter Antenna	: 1
Antenna Bushing	: 1
Charger	: 1
9V Terrace Battery	: 1
9.6V Rechargeable Battery	: 1
Product instruction	: 1

### ③ Battery and Charger



Rechargeable Battery Packet(9.6V)



Charger(9.6V)



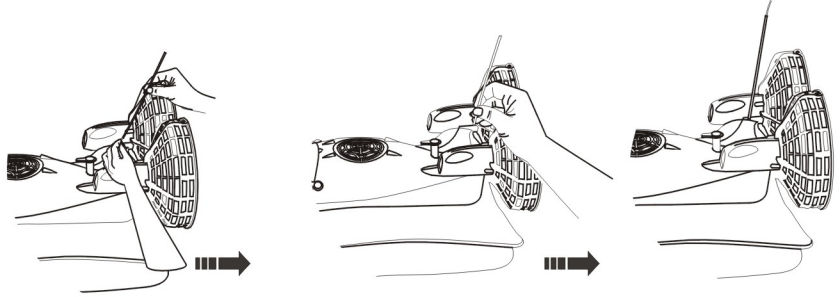
## PRIMARY TECHNOLOGY PARAMETERS

Available R/C Emissive Frequency	: 27MHz / 35MHz / 40MHz / 49MHz
Transmitter Power Voltage	: 9 V
Boat Power Voltage	: 9.6 V
Boat Battery	: 800 mAh

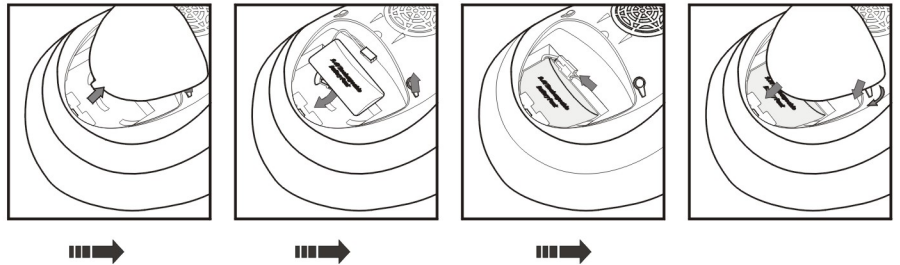


## OPERATION INSTRUCTIONS

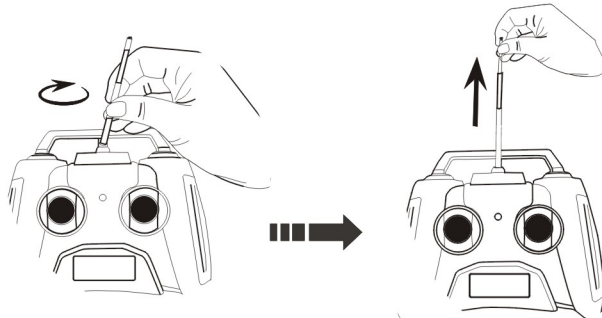
- ① Thread the antenna of the ship into the annular tube, and then insert the annular tube into the hole at the end of the ship for antenna fixing.



- ② Open the battery case lid in front of the ship, place a 9.6V rechargeable battery into the case, and place the lid securely.



- ③ Install the telescopic antenna of the remote controller, and spread the antenna completely.



- ④ Put the 9V layered battery into the remote controller, and be sure that the symbols(+) and (-) inside the battery case of the remote controller are correctly aligned with the battery.

