

Wi-Fi Microscope for Beauty Care Hair / Scalp Analysis

User Manual

Warning



FCC WARNING

This equipment has been tested and found to comply with the limits for a Class B digital device, pursuant to part 15 of the FCC Rules. These limits are designed to provide reasonable protection against harmful interference in a residential installation. This equipment generates, uses and can radiate radio frequency energy and, if not installed and used in accordance with the instructions, may cause harmful interference to radio communications. However, there is no guarantee that interference will not occur in a particular installation. If this equipment does cause harmful interference to radio or television reception, which can be determined by turning the equipment off and on, the user is encouraged to try to correct the interference by one or more of the following measures:

- Reorient or relocate the receiving antenna.
- Increase the separation between the equipment and receiver.
- Connect the equipment into an outlet on a circuit different from that to which the receiver is connected.
- Consult the dealer or an experienced radio/TV technician for help.

CAUTION: Any changes or modifications not expressly approved by the grantee of this device could void the user's authority to operate the equipment.

This device complies with part 15 of the FCC rules. Operation is subject to the following two conditions: (1) This device may not cause harmful interference and (2) This device must accept any interference received, including interference that may cause undesired operation.

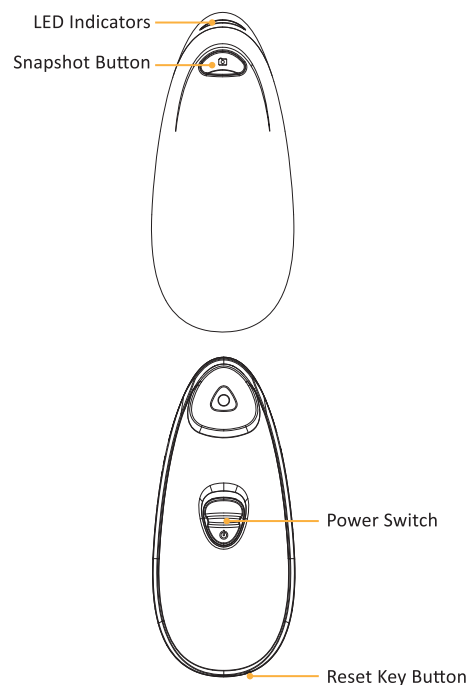
RF EXPOSURE WARNING

This equipment must be installed and operated in accordance with provided instructions and the antenna(s) used for this transmitter must be installed to provide a separation distance of at least 20 cm from all persons and must not be co-located or operating in conjunction with any other antenna or transmitter.

NCC WARNING

Article 12: Without permission granted by the DGT, any company, enterprise, or user is not allowed to change frequency, enhance transmitting power or alter original characteristic as well as performance to a approved low power radio-frequency devices. Article 14: The low power radio-frequency devices shall not influence aircraft security and interfere legal communications; If found, the user shall cease operating immediately until no interference is

Components Names & Function



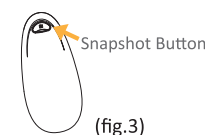
-Getting started-

- 1 Slide off the battery cover and insert 18650 Li-ion battery. (fig.1)
※ Follow the battery icon in battery slot to install battery correctly. (fig.2)
CAUTION: Risk of explosion if battery is replaced by an incorrect type.
Dispose of used batteries according to the instructions.
- 2 Please have battery fully charged before 1st time of use.
※ The RED indicator will lights off when the charging completes.



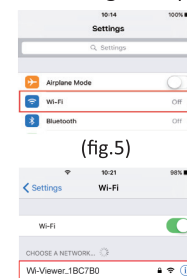
-Observing Mode (Picturing and Saving)-

- 1 To open Microscope, please push the Snapshot Button up and make sure LED illuminates through the tip. (fig.3)
- 2 Put the microscope on the object you want to observe or inspect and press the picturing button to save picture in Microscope.



-Wi-Fi Mode (Viewing Photo)-

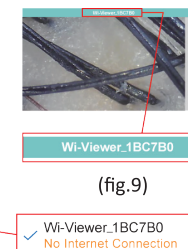
- 1 Download the APP from iOS App Store/ Android Google Play Store on your iOS/Android mobile device.
- 2 Plug the Micro USB charger. (fig.4)
※ Be noted that WiFi Function will be shut down automatically when charger unplugged.
- 3 Put Microscope on the exclusive stand and long press Snapshot button to turn on Wi-Fi transmission mode. (fig.4)
※ keep Microscope away from body beyond a safety distance of 20 cm while operating Wi-Fi function.
- 4 Go to "Settings" to turn on Wi-Fi (fig.5) and Select "Wi-Viewer-XXXXXX". (fig.6)
- 5 Key-in password to connect Microscope. (fig.7)
※ You may see "No Internet Connection" when successfully connected. (fig.8)
※ For the initial Wi-Fi ID & Password, please take look at the label beside the battery slot.
- 6 Open the APP in your mobile device.
- 7 Make sure the Wi-Fi ID, "Wi-Viewer-XXXXXX", showing on the title bar correctly. (fig.9)
- 8 Start viewing and upload your photos in Wi-Viewer HD. (fig.9)



(fig.5)



(fig.7)

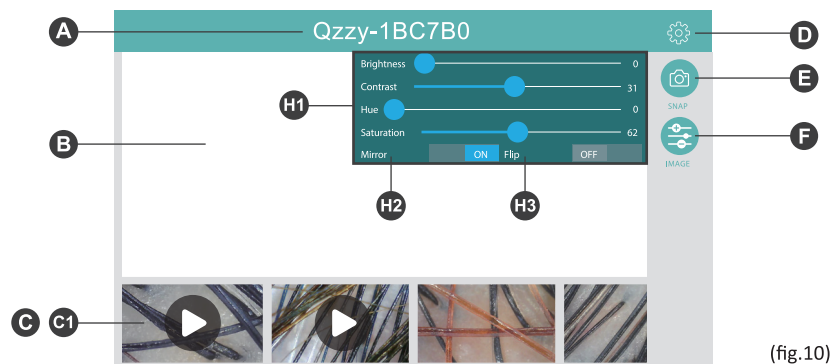


(fig.9)

(fig.6)

(fig.8)

-APP Software Operation and Introduction-



(fig.10)

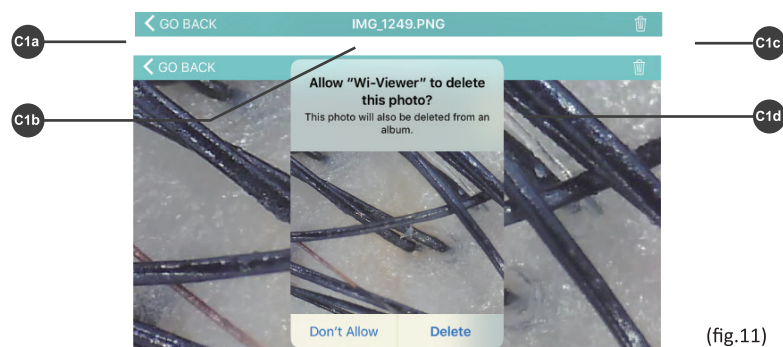
- A Title Bar:** The domain name of your microscope
- B View Window:** Shows image
- C Library:** Row to quick review Videos & Pictures you pictured in the App.
※Clicking anywhere on View Window can open/fold Library bar

C1 Videos Replay:

Click any video to open the player.

- C1a** Go back to View window
- C1b** Name of video/photo
- C1c** Trash Can Icon: Delete photos/videos
- C1d** Y/N Popping Window:

When clicking trash can icon, a Y/N window will pop up to recheck. Clicking "Yes" again can delete photos/videos.(fig.11)



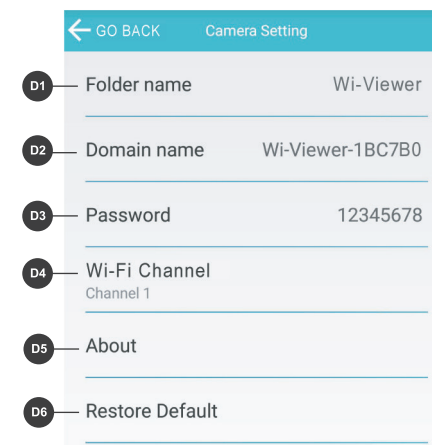
(fig.11)

REMARK: Initial Wi-Fi ID & Password

- Wi-Fi ID: Wi-Viewer-XXXXXX
- Password: 12345678

D Setting: Go to Setup page(fig.11)

- D1 Folder Name:**
The current storage path of videos & photos.
※Click the label to rename or indicate a new path
- D2 Domain Name:**
Wi-Fi ID
(Default: Wi-Viewer-XXXXXX)
- D3 Password:**
WiFi Connection password
(Default: 12345678)
- D4 Wi-Fi Channel:**
WiFi Channel setting
※Select other channels and restart your microscope when your Wi-Fi connection is too slow.
- D5 About:**
App & Firmware version
- D6 Restore Default :**
Restore Wi-Fi ID/Password & Image Parameters back to DEFAULT



(fig.11)

- E SNAP:**
Snapshot and Save a picture when playing video

- F IMAGE:**
Click to open/hide image parameter bar
 - F1** Image Parameter Adjustments
 - F2** Mirror: Horizontally flip image
 - F3** Flip: Vertically flip image

-Device Hardware Operation and Introduction-

1. Place Wi-Fi Analysis Microscope on the surface of your scalp, and slightly adjust the angle for a clear stream image.
2. Pressing snapshot button can capture and freeze images. They will be saved in your mobile device. Pressing again can end freezing.