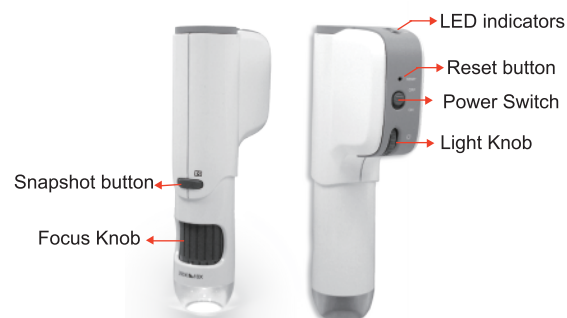


Wifi Microscope

Specification

Compatible Host Devices	Apple iOS devices/ Android devices
Image Sensor	0.3M pixel Color CMOS
Magnification	1X~80X (Magnification vary with monitor size)
Lighting	Adjustable LED lights
Snapshot mode	Hardware(device) / Software(APP) controllable
Support Portocol	2.4GHz WiFi IEEE802.11b/g/n
Support video code protoco	MPEG4
Operational range	10M from a Wi-Fi connected device(without shelter)
Frequency	2.4GHz band width
Power source	3 x AA(Alkaline,Ni-MH) batteries (Rechargeable Ni-MH batteries are recommended.)
Power Consumption	3.6V/440mA
Continuous Operation time	Approximately maximum 3.5 hrs with Ni-MH 2500mA battery (Depends on environment and battery capacity)
Gain Control	Auto Gain Control
White Balance	Automatic
Outside Dimensions	155mmx75mmx37mm
Weight	140g (without batteries)

Components Names and Function



Caution: If you forget the password, please use paper clip to press "Reset button" for 3 seconds or touch the RESET button in the app for set back the default value.

Remark:The factory default value, please see as following.

*WiFi SSID:Wi-Viewer

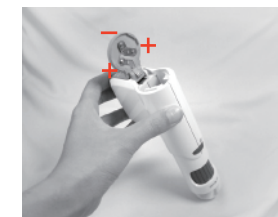
*WiFi Password: 12345678

Getting started

1. Visit the iTunes store or Android market and install the Wi-viewer app.
- 2 Slide off the battery cover and insert AA batteries.(fig.1)
 - Be sure to insert batteries correctly (positive and negative). (fig.2)
- 3.Slide the power switch to the ON position. The green LED will turn on.
(If the red LED is flashing, please prepare to replace the batteries.)
- 4.Connect the mobile device to the WiFi network.
(please see the chapter on iOS/Android app operation)



(fig.1)



(fig.2)

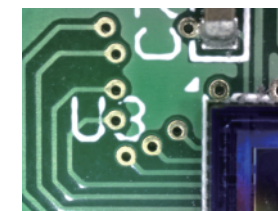
5.Place the camera on or above the object to be viewed.

6.Tilt the wifi microscope slightly when viewing the object in order to get 3D image.(fig.3)

7.The closer you put the wifi microscope to the object, the higher the magnification. (fig.4) Begin with the focus dial turned all the way to the right and turn slowly to the left until the object comes into focus. If the scope tip is touching the object, continue turning the focus dial to the left until the image comes into focus the second time. This is at 80x magnification.



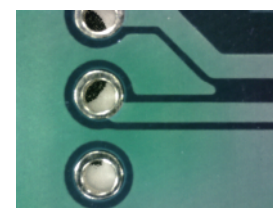
(fig.3)



(fig.4)

8. A clear focused image can be obtained by adjusting the focus knob as well as changing the distance between the object and the wifi microscope.(fig.5)

9. If the image is blurred, adjust the focus knob to the right end and view the image of the object in lower magnification first.(fig.6)



(fig.5)



(fig.6)

10. When viewing an object, adjust the focus knob slightly to the left and move the wifi microscope up and down until a clear image is obtained.(fig.7)

11. If the object is too dark or bright, adjust the light knob until you get the preferred brightness.

Turn the knob to the right to get a brighter light and to the left to get a dimmer light.(fig.8)

12. Use snapshot button to capture an image. The image will be saved on your mobile device.



(fig.7)

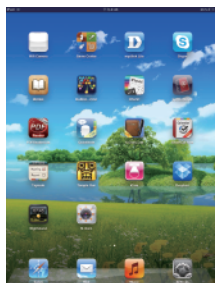


(fig.8)

iOS app operation

1. Go to the Settings Icon and choose WiFi setup.(fig.9)
2. Select Wi-Fi, and turn it on.
3. Select Wi-viewer.(fig.10)
4. Key in the password and then the connection will be established.

Remark: The initial WiFi SSID is on the label inside of the Battery Cover
The factory default password is 12345678.



(fig.9)



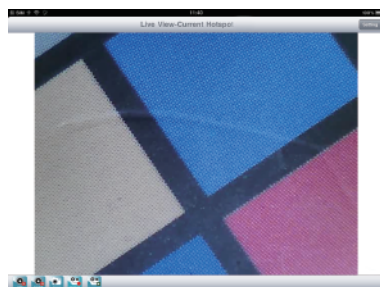
(fig.10)



(fig.11)

5. Go back to main menu, and choose the Wi-viewer app.

iOS App Function Key List



ON/OFF:

Touch the camera on button on the screen, you will see the live image from WiFi microscope. If you want to turn it off, touch the button again.



Pause/Play:

Touch the PAUSE button to freeze the current image. Touch it again to go back to the live image.



Snapshot:

Touch the Snapshot button to take a picture. Images can be found in the iPad/iphone pictures album.



Record/Stop Record:

Record the real time video and stop record.



Playback:

Touch the Playback icon to playback the saved videos.



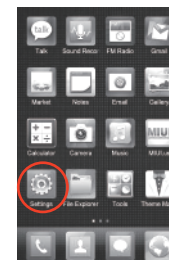
Setup:

Wifi Setup: If you would like to change the default name of SSID/password, enter the alphanumeric within 16, touch APPLY will store automatically and reboot.
Image Setup: Set up the value of brightness/contrast/hue/saturation.

Android App Operation

1. Go to the Settings Menu and choose WiFi setup.(fig.13)
2. Select Wi-viewer, and turn it on.(fig.14)
3. Key in the password and then the connection will be established. (fig.15)

Remark: The initial WiFi SSID is on the label inside of the Battery Cover
The factory default password is 12345678.



(fig.13)



(fig.14)



(fig.15)

4. Go to the Home screen and choose ALL apps.(fig.16)
5. Choose Wi-viewer.

Android App Function Key List



ON/OFF:

Touch the Camera On button on the screen to view the live video image from WiFi camera. If you want to shut it down, touch the button again.



Snapshot:

Touch the Snapshot button to take a picture. Saved images can be found in the pictures area on your android tablet or smartphone.



Record/Stop Record:

Record the real time video and stop record.



Playback:

Playback the recorded videos.



Setup:

Wifi Setup:

If you would like to change the name of SSID/ password, please enter the alphanumeric within 16. Touch OK button, it will store automatically and reboot in the meantime.

Reset SSID and Password: Set back the default value.

Remark: The factory default value, please see as following,

*WiFi SSID: Wi-Viewer

*WiFi Password: 12345678

- This device complies with Part 15 of FCC rules. Operation is subject to the following two conditions: (1) The device may not cause harmful interference, and (2) This device must accept any interference received including interference that may cause undesired operation.
- RF exposure warning
The equipment complies with FCC RF exposure limits set forth for an uncontrolled environment. The equipment must not be co-located or operating in conjunction with any other antenna or transmitter.