

**Bluetooth 4.0 :** RDM-ST1 employs Bluetooth 4.0 (Smart Ready) technology that can be connected by smartphone, tablet or similar mobile device. Please check out compatibility chart for detail.

**Battery Status Display:** You can view the battery status in the mobile application. You can decide whether or not to replace the battery before starting a long exposure job.

**Light in weight:** RDM-ST1 is the lightest multifunction self powered shutter release trigger on the market.

**Signal Strength Indicator:** The mobile application can let you see the signal strength on its status bar.

Note:

- For some camera models, when camera is set to bulb mode, using RDM-ST1 to drive exposure time less than 0.5 seconds may not render accurate result.

- If camera does not have bulb mode, RDM-ST1 can only provide limited functionality.

## Specification

Technology	Bluetooth Smart Ready (4.0) Protocol
Transmitting Distance	70m
Function (shutter)	Single shot (exposure time adjust), Bulb, half press, Time lapse, Bracket, B-ramping
Cable	A 2.5mm phone jack wire to shutter release connector for specific camera series
Smartphone Compatibility	iPhone 4S, iPhone 5, The new iPad, iPad with Retina Display, iPad Mini and iPod Touch (5th Generation)
Camera	Canon, Nikon, Sony, Olympus, Panasonic M4/3, Leica, Pentax, Contax and Samsung, check out compatibility chart for detail.
Sizes and Weight	29.8 x 29.8 x 15.4mm, 30g
Battery Life	3 year at 25°C
Place of Origin	Designed in Hong Kong Made in China
Note : Design and specification are subjected to change without notice. (2012.11)	

FCC ID: R6W-736781A

### FCC Statement

This equipment has been tested and found to comply with the limits for a Class B digital device, pursuant to part 15 of the FCC Rules. These limits are designed to provide reasonable protection against harmful interference in a residential installation. This equipment generates uses and can radiate radio frequency energy and, if not installed and used in accordance with the instructions, may cause harmful interference to radio communications. However, there is no guarantee that interference will not occur in a particular installation. If this equipment does cause harmful interference to radio or television reception, which can be determined by turning the equipment off and on, the user is encouraged to try to correct the interference by one or more of the following measures:

- Reorient or relocate the receiving antenna.
- Increase the separation between the equipment and receiver.
- Connect the equipment into an outlet on a circuit different from that to which the receiver is connected.
- Consult the dealer or an experienced radio/TV technician for help.

### FCC Statement

This device complies with FCC radiation exposure limits set forth for an uncontrolled environment. This device complies with Part 15 of the FCC Rules. Operation is subject to the following two conditions: (1) this device may not cause harmful interference, and (2) this device must accept any interference received, including interference that may cause undesired operation.

### Caution!

Any changes or modifications not expressly approved by the party responsible for compliance could void the user's authority to operate the equipment.

**KEEP OUT OF REACH OF CHILDREN.** Swallowing coin cell may lead to serious injury or death. Severe burns can occur within 2 hours of ingestion. **See doctor immediately.** Keep in original package until ready to use. Dispose of used batteries immediately. Risk of injury may result from fire, explosion or leakage. Do not disassemble, charge, crush or expose to fire or high temperatures.

iPhone 4S, iPhone 5, The new iPad, iPad with Retina Display, iPad mini, iPod Touch and iOS are trademarks of Apple Inc., registered in the U.S. and other countries. Company names, product names and marks mentioned herein are the property of their respective owners and may be trademarks or registered trademarks.

The Bluetooth® word mark and logos are registered trademarks owned by Bluetooth SIG, Inc. and any use of such marks by ARP Devices Limited is under license. Other trademarks and trade names are those of their respective owners. Raydio Master and RDM are the registered trademarks of ARP Devices Limited. All rights reserved.



## Box Includes

1. The Professional Bluetooth Camera Remote Control.
2. The Shutter release cable for specific camera series.
3. The Ribbon Strap.
4. The Coin Cell: CR2032.

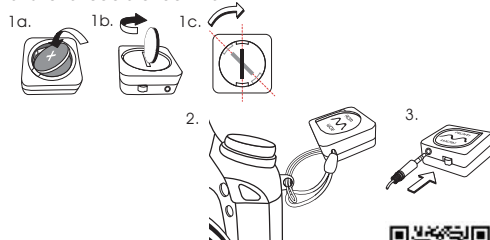


## Quick Installation Guide

1. 1a, 1b coin cell installation (in order to avoid short circuiting the coin cell, please insert the end of the battery near the +ve battery plate first.)

2. Ribbon strap attachment

3. Shutter cable attachment



## Compatibility Chart

Please visit link below for camera compatibility:  
[http://www.arpdevices.com/rdm\\_st1\\_com.html](http://www.arpdevices.com/rdm_st1_com.html)



## LED Status Table

The RDM-ST1 has an LED with colors: red, green and orange. The LED displays the current status. Please find the following table for the details:

Power save mode (select in apps)	Off	On
Start up (Switch ON)	Green blink once: battery ok Red blinks: battery low	Green blink once: battery ok Red blinks: battery low
Shutter release	Green blink once	no LED indication
10s Time delay shutter	Green blink until 2s before shutter release, then green led will turn light on continuously and switch off once the shutter is triggered.	no LED indication
2s Time delay shutter	Green will turn on continuously until shutter is triggered.	no LED indication
Photo taking task running	Orange blink every 5 seconds	no LED indication

## Smartphone App

iPhone App is Available on the App Store.



To download the app, simply look up the Keyword "Raydio Master" in iPhone App Store.



**One Touch User Interface Design:** The user interface on the smart phone app is designed to be intuitive and productive. The shutter release button or time lapse start button is visible at all time while you are adjusting the shutter release trigger parameters. From now on you can always be confident on capturing every precious moment.

## More Features

**Professional Shutter Control Features:** RDM-ST1 provides complete set of shutter control features including: bulb, continuous shutter, delay timer, long time exposure, bracket exposure and intervalometer (time lapse) with our Free App installed on your Smart Phone or tablet. The RDM-ST1 is the only device that you need to take simple group photos, long exposure, HDR or time lapse photos over many days.

**Smart Scheduler:** With the Raydio Master's patented Smart Scheduler feature, after sending long exposure or time lapse command with your mobile device, you can feel free to quit the mobile application or bring the mobile device out of the communication range. RDM-ST1 can carry out the task uninterruptedly. If power saving mode is on, 30 seconds after disconnection, RDM-ST1 will switch off its radio altogether in order to save as much power as possible while still keep counting time for exposure or intervalometer jobs. If you wish to track the progress, you can simply switch the RDM-ST1 to off for less than 3 seconds and switch it back on again immediately. The mobile application can then connect to the RDM-ST1 again. Smart Scheduler feature not only saves the power of RDM-ST1, it also frees up your precious mobile device for other purposes.

**Mini Shutter Release Wire:** Raydio Master's engineers have been working hard to maximize the portability of the receiver. The 2.5mm mini jack plug of the shutter release cable is smaller and compact. The spring wire is thinner but reinforced by nylon in order to provide the best protection to its copper wires.

raydio master®

Professional Bluetooth Camera Remote Control

RDM-ST1

USER MANUAL