



## **Gimbal™ Series 21 Proximity Beacon**

*Internal Photographs*

360-0075-000 Revision A

Gimbal, Inc. Confidential and Proprietary

**NO PUBLIC DISCLOSURE PERMITTED:** Please report postings of this document on public servers or websites to: [legal@gimbal.com](mailto:legal@gimbal.com)

**Restricted Distribution:** Not to be distributed to anyone who is not an employee of either Gimbal, Inc. or its subsidiaries without the express approval by Gimbal, Inc.

Not to be used, copied, reproduced, or modified in whole or in part, nor its contents revealed in any manner to others without the express written permission of Gimbal, Inc.

This technical data may be subject to U.S. and international export, re-export or transfer ("export") laws. Diversion contrary to U.S. and international law is strictly prohibited.

Gimbal, Inc.  
San Diego, California  
U.S.A.

© 2014 Gimbal, Inc. All Rights Reserved.

Gimbal™ is a trademark of Gimbal, Inc. registered in the United States and other countries.

## Revision History

Revision	Date	Description
A	September 2014	Initial Release



Figure 1: Inside battery compartment

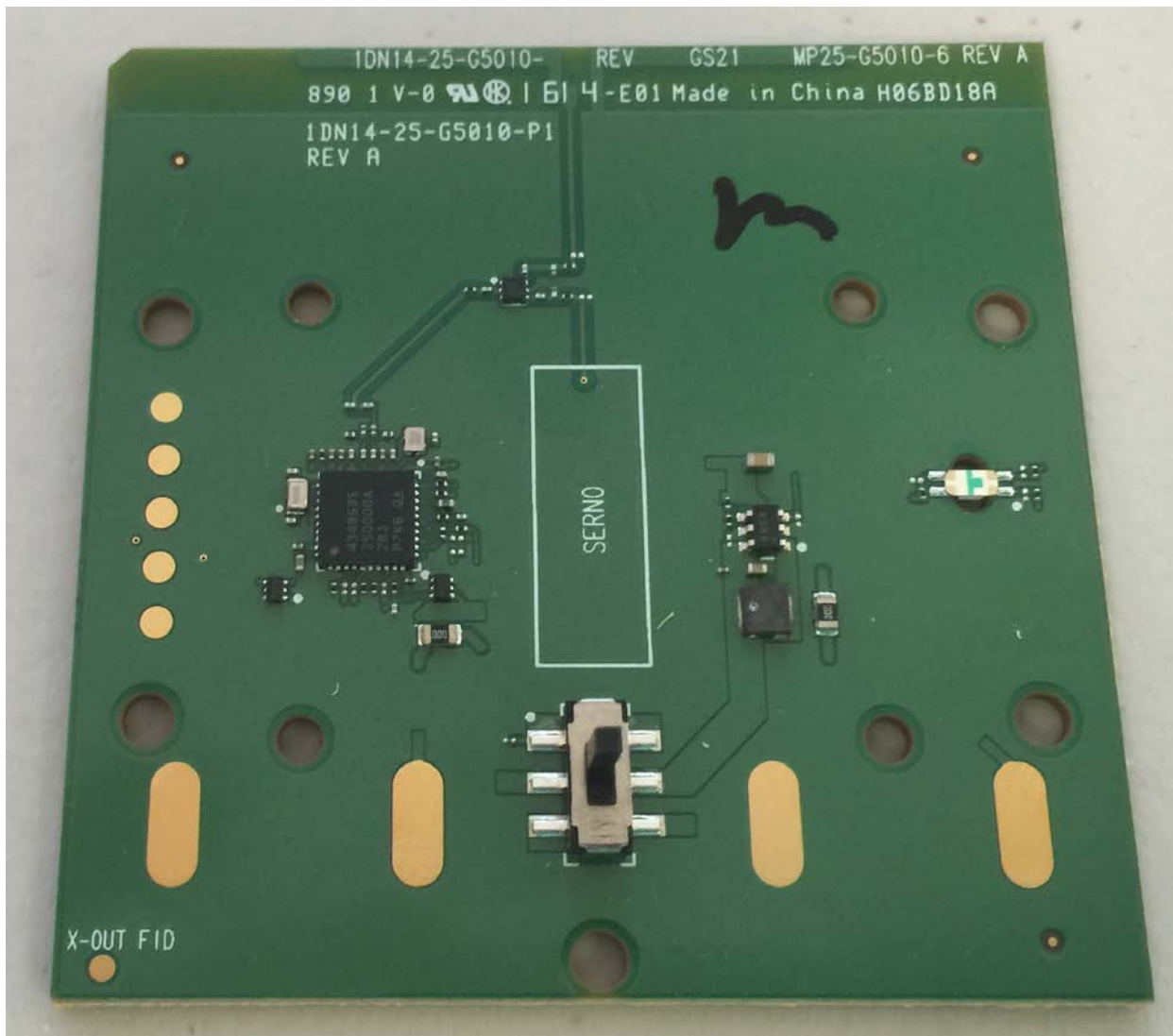


Figure 2: PCB Top Side

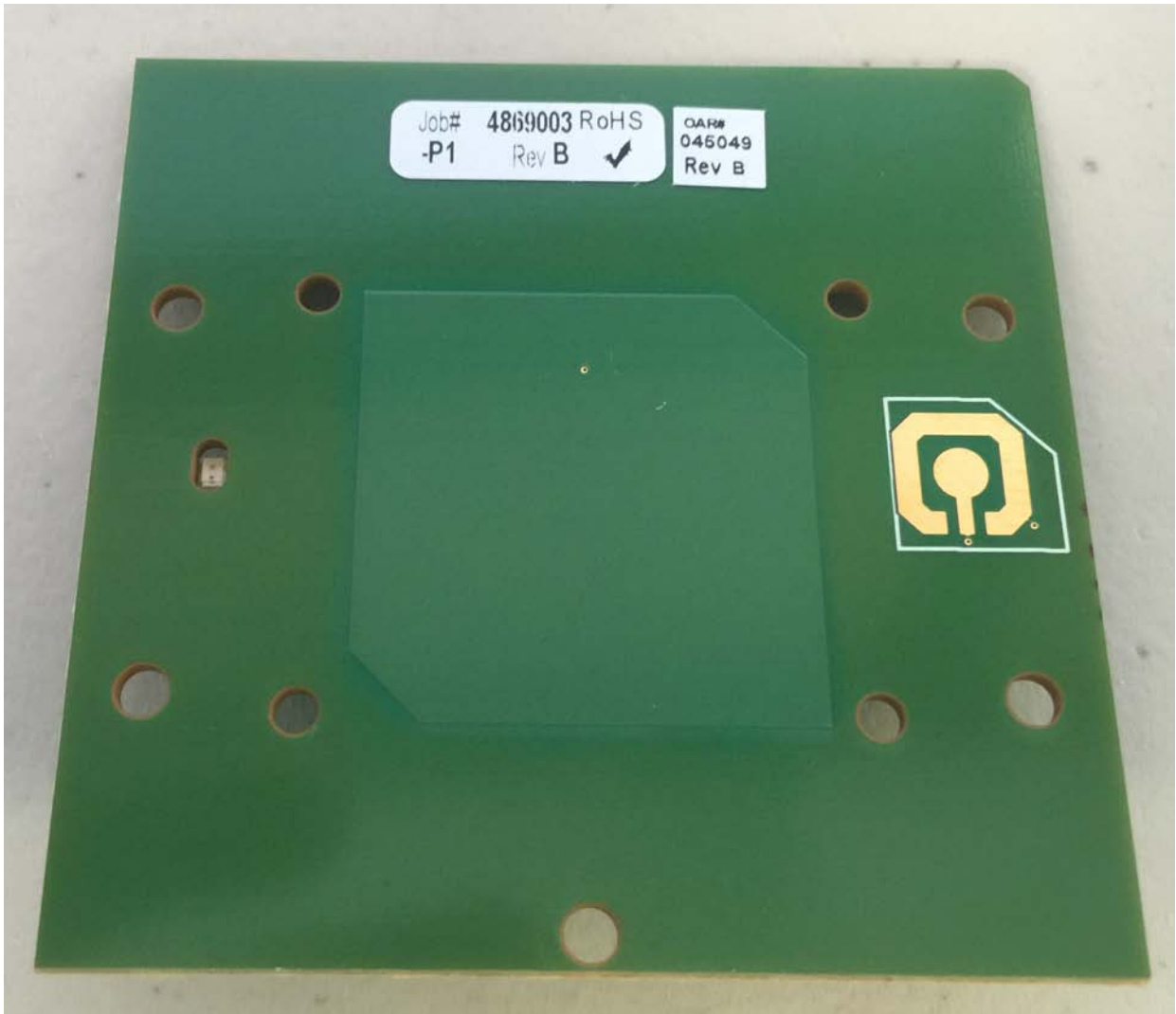


Figure 3: PCB Bottom Side