

RV BIKE Generator User Manual



Index

1. Introduction.....	1
2. Product Description.....	1
3. System Specification.....	1
4. Software Installation.....	2
5. RV BIKE Interface Description.....	2
6. Product Directions.....	5

1. Introduction

RV (Reality Virtualization) BIKE Generator is a mutual fitness combining the function of gym and bike activities with real scenery. Enjoying VR BIKE Generator with provided programs will allow you travelling to different countries and interesting places. The Generator creates various loading to the bike from the information collected from the load condition of the scenery accordingly. It simulates the out door feeling even you are in door. In Addition, this product provides a social opportunity through internet. You can not only excise but also race with your friends on the system.

2. Product Description

-Product contents:

- RF Receiver (Dongle): 1 set.
- RV Bike Generator: 1 set.
- BIKE executive program Disc: 1 pc.

-Require to install 4 following software to run this system:

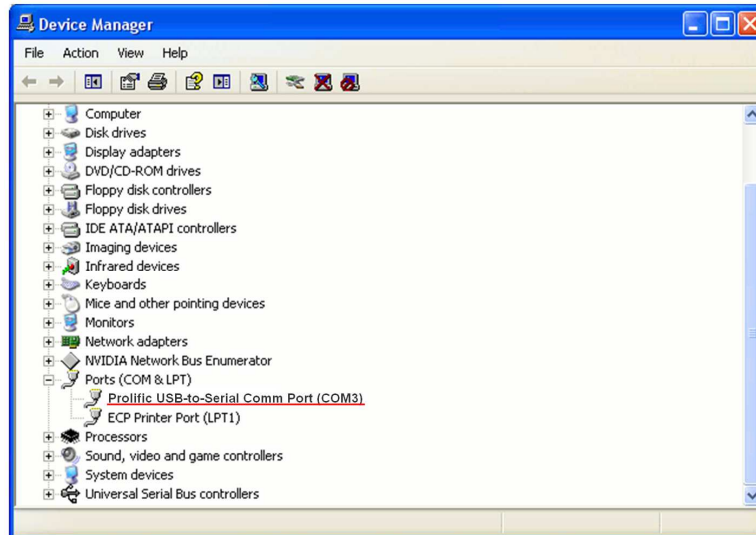
QuickTime 、Java(jdk) 、PL2303_Prolific_Driver and RV BIKE executive program

3. System Specification

- Windows XP or Windows 7 working system
- Pentium Dual CPU 3.0GHz system
- Min. 2GB Memory Capacity
- Min. 20GB Hard Disc Capacity
- Support USB Comm Port

4. Software Installation

- Install QuickTime, Java(jdk), PL2303_Prolific_Driver to your computer from Disc.
- Copy RV BIKE executive program to user's computer. (no Chinese characters accepted in the filename)



After installing “ PL2303_Prolific_Driver” program, plug the Dongle to user's computer. IF the program of “Prolific USB-to-Serial Comm Port” has been installed successfully, the following information will be shown on the root: Control Panel -> System -> Hardware -> Device Manager -> Ports (COM & LPT) -> Prolific USB-to-Serial Comm Port.

*The file of RV BIKE contents a sub-file, which is with a sub-file of ”movie” , The movie for game are stored in this file.

5. RV BIKE Interface Description

1. Run the program of RV BIKE.EXE, once the Dongle is plugged to your computer. The monitor will show the picture as below, then, press 「Enter」 key.



2. Options for game:

- 「Single」 : For single person used
- 「LAN」 : Local Area Network, for multiple persons used on line through hub
- 「InterNet」 : For multiple persons used on line through internet
- 「Exit」 : For exiting the game



3. Scenery Optional List:

- Select the scenery to enter the game
- 「Call Record」 : Read the records
- 「Back」 : Back to mail manual



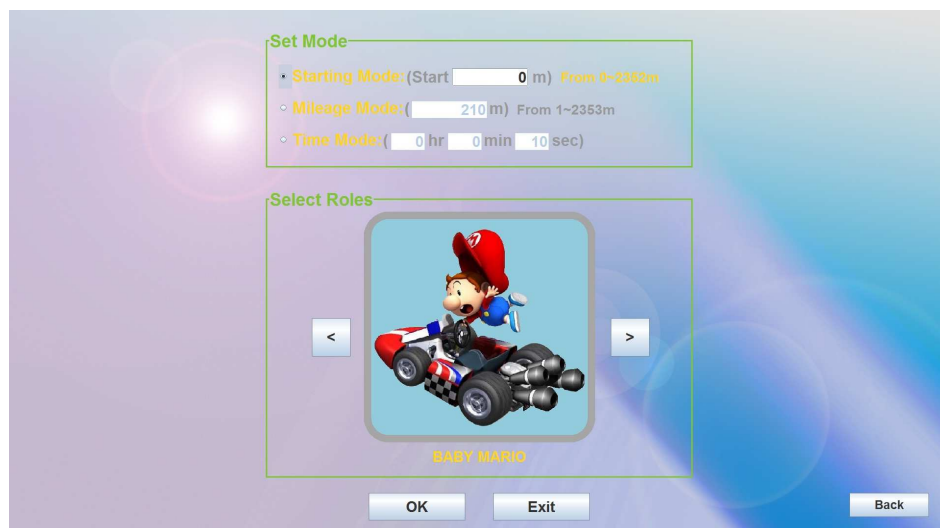
4. Set parameters for game, such as mode, role...

-Set Mode

- Starting Mode: Set the location where you want to start for this game
- Mileage Mode: Set the total mileage that you want to ride for this game
- Time Mode: Set the time length that you want to ride for this game

-Select Roles

- Select a role for this game



5. Game Scenery:

-Function Buttons

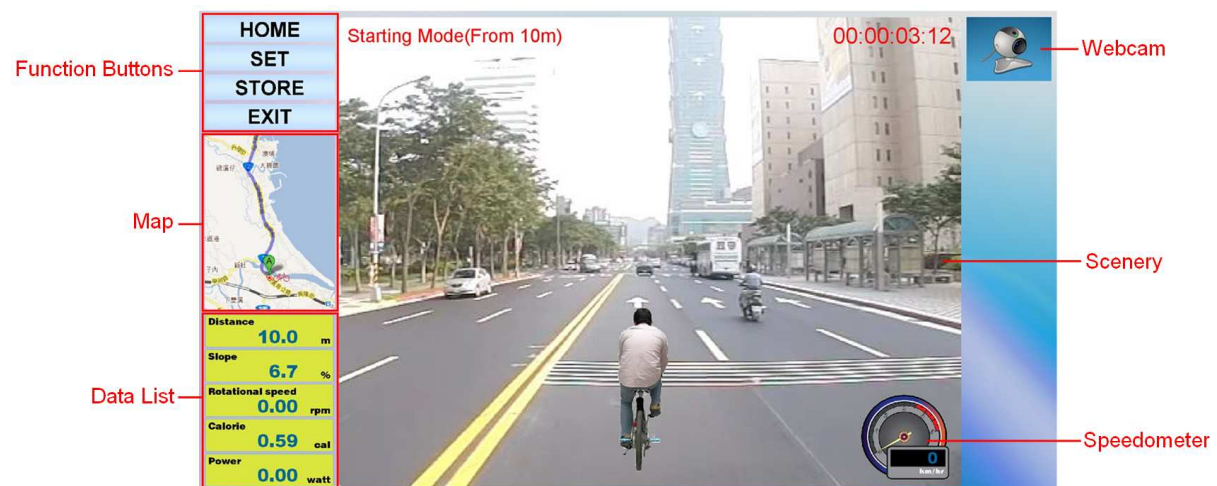
- Home: Back to the optional manual
- Set: Set the visible or invisible for this game (Map, People, Speed, Model, Time)
- Store: Store the data for this game
- Exit: Exit this game

-Map

- Illustrate the location of all users

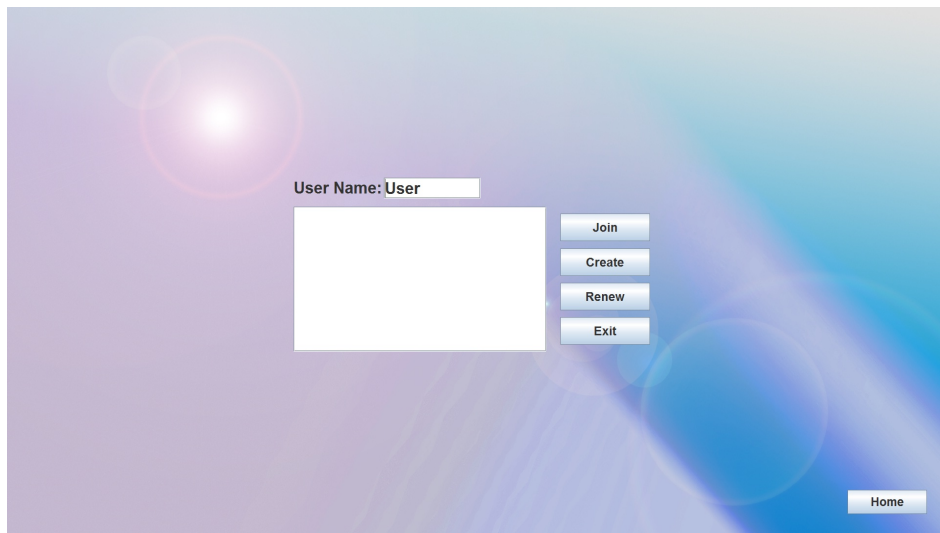
-Data List

- List the data from this game (such as mileage, slop of the road, speed, calorie exhausted and power)

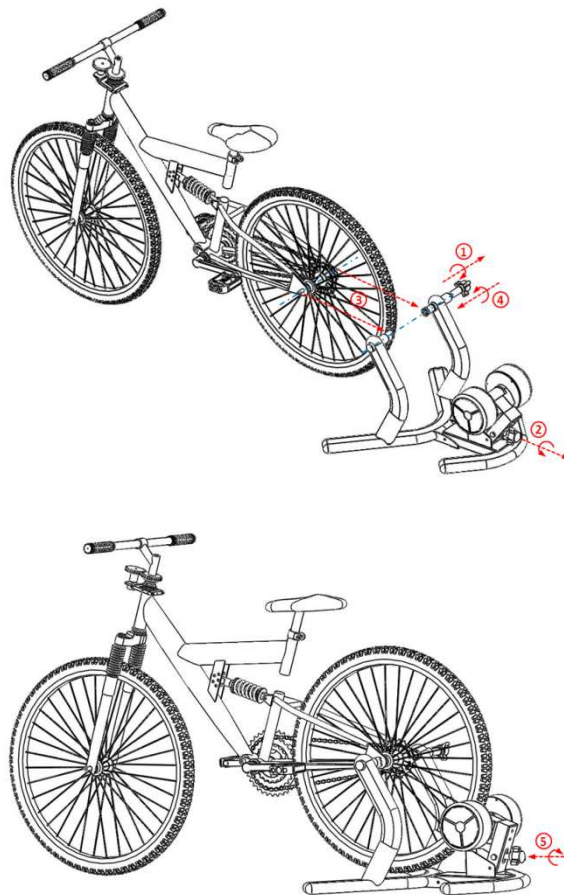



6. LAN(Local Area Network):

- 「User Name」: Key in a name used for this game
- 「Join the Game」: Join the room created for this game
- 「Create a Room」: Create a room for all users to join this game
- 「Renew」: Renew all data
- 「Exit」: Exit this game



6. Product Directions



 4U HEALTH TECHNOLOGY INC. 優活健康科技股份有限公司				<h1 style="margin: 0;">Warrant</h1>	
Description	RV BIKE Generator		Model No.	4U-BK1301	
Consumer	Name :		Warranty	12 months	
	Name:				
	Address :				
	Tel No. :				
Dealer	Name :		Stamp :		Selling Date :
	Address :				
	Tel. No. :				

***Dealer's stamp and Selling date are required on this form for further service.**

Office Address: Fl 5, No. 4, Lane 220, Sanchun, New Taipei City

Service Line: +886-2987-3827

FCC Compliance and Advisory Statement

This device complies with Part 15 of the FCC rules. Operation is subject to the following two conditions: (1) this device may not cause harmful interference, and (2) this device must accept any interference received, including interference that may cause undesired operation.

This equipment has been tested and found to comply with the limits for a Class B digital device,

according to Part 15 of the FCC rules. These limits are designed to provide reasonable protection against harmful interference in a residential installation. This equipment generates, uses and can radiate radio frequency energy and if not installed and used in accordance with the instructions, may cause harmful interference to radio communications. However, there is no guarantee that interference will not occur in a particular installation. If this equipment does cause harmful interference to radio or television reception, which can be determined by turning the equipment off and on, the user is encouraged to try correct the interference by one or more of the following measures:

1. Reorient the receiving antenna.
2. Increase the separation between the equipment and receiver.
3. Connect the equipment into an outlet on a circuit different from that to which the receiver is connected.
4. Consult the dealer or an experienced radio/TV technician for help.

Any special accessories needed for compliance must be specified in the instruction manual.

Warning: A shielded-type power cord is required in order to meet FCC emission limits and also to prevent interference to the nearby radio and television reception. It is essential that only the supplied power cord be used. Use only shielded cables to connect I/O devices to this equipment.

CAUTION: Any changes or modifications not expressly approved by the party responsible for compliance could void your authority to operate the equipment.

Important Notice

4U Health reserves the right to make corrections, modifications, enhancements, improvements and other changes to its products and services at any time, and to discontinue any product or service without notice. Customers should obtain the latest relevant information before placing orders, and should verify that such information is current and complete. All products are sold subject to 4U Health's terms and conditions of sale, supplied at the time of order acknowledgment. Information relating to device applications, and the like, is intended as suggestion only and may be superseded by updates. It is the customer's responsibility to ensure that their application meets their own specifications. 4U Health makes no representation and gives no warranty relating to advice, support or customer product design.

4U Health assumes no responsibilities or liabilities for the use of any of its products, conveys no license or title under any patent, copyright or mask work rights to these products, and makes no representations or warranties that these products are free from patent, copyright or mask work infringement, unless otherwise specified.

4U Health products are not intended for use in life support systems/appliances or any systems where product malfunction can reasonably be expected to result in personal injury, death, severe property damage or environmental damage. 4U Health customers using or selling 4U Health products for use in such

applications do so at their own risk and agree to fully indemnify 4U Health for any damages resulting from such use.

All trademarks are the property of their respective owners.

FCC Certification Requirements

Caution : Any changes or modifications in construction of this device which are not expressly approved by the party responsible for compliance could void the user's authority to operate the equipment.

This device complies with part 15 of the FCC Rules. Operation is subject to the following two conditions: (1) This device may not cause harmful interference, and

(2) This device must accept any interference received, including interference that may cause undesired operation.

NOTE: The manufacturer is not responsible for any radio or TV interference caused by unauthorized modifications to this equipment. Such modifications could void the user's authority to operate the equipment.

NOTE: This equipment has been tested and found to comply with the limits for a Class B digital device, pursuant to part 15 of the FCC Rules. These limits are designed to provide reasonable protection against harmful interference in a residential installation. This equipment generates uses and can radiate radio frequency energy and, if not installed and used in accordance with the instructions, may cause harmful interference to radio communications.

However, there is no guarantee that interference will not occur in a particular installation. If this equipment does cause harmful interference to radio or television reception, which can be determined by turning the equipment off and on, the user is encouraged to try to correct the interference by one or more of the following measures:

- Reorient or relocate the receiving antenna.
- Increase the separation between the equipment and receiver.
- Connect the equipment into an outlet on a circuit different from that to which the receiver is connected.
- Consult the dealer or an experienced radio/TV technician for help.

NOTE: Separate approval is required for all other operating configurations, including portable configurations with respect to FCC Part 2.1093 and different antenna configurations.

NOTE: To ensure compliance with all non-transmitter functions the host manufacturer is responsible for ensuring compliance with the module(s) installed and fully operational. For example, if a host was previously authorized as an unintentional radiator under the Declaration of Conformity procedure without a transmitter certified module and a module is added, the host manufacturer is responsible for ensuring that after the module is installed and operational the host continues to be compliant with the Part 15B unintentional radiator requirements. Since this may depend on the details of how the module is integrated with the host, the grantee (the party responsible for the module grant) shall provide guidance to the host manufacturer for compliance with the Part 15B requirements.

WARNING: This equipment may generate or use radio frequency energy. Changes or modifications to this equipment may cause harmful interference unless the modifications are expressly approved in the instruction manual. The user could lose the authority to operate this equipment if an unauthorized change or modification is made.

This device complies with Part 15 of the FCC rules. Operation is subject to following Two conditions: 1. this device may not cause harmful interference and 2. This device Must accept any interference received including interference that may cause undesired Operation of this device.

The changes or modifications not expressly approved by the party responsible for Compliance could void the user's authority to operate the equipment.

To comply with the FCC RF exposure compliance requirements, this device and its antenna Must not be co-located or operating to conjunction with any other antenna or transmitter,

Except if installed in compliance with FCC Multi Transmitter procedures.

To inherit the modular approval, the antennas for this transmitter must be installed to provide A separation distance of 20cm from all persons and must not be co-located or operating in Conjunction with any other antenna or transmitter.

Note: This equipment has been tested and found to comply with the limits for a Class B digital device, Pursuant to part 15 of the FCC Rules.

These limits are designed to provide reasonable Protection against harmful interference in a residential installation. This equipment generates Uses and can radiate radio frequency energy and, if not installed and used in accordance With the instructions, may cause harmful interference to radio communications.

However, There is no guarantee that interference, Will not occur in a particular installation.

If this equipment Does cause harmful interference to radio or television reception, which can be determined by turning The equipment off and on, the user is encouraged to try to correct the interference by one or More of the following measures:

- Reorient or relocate the receiving antenna.
- Increase the separation between the equipment and receiver.
- Connect the equipment into an Outlet on a circuit different from that to which the receiver is connected.

This module is limited to OEM installation only

To OEM Installer

1. FCC ID on the final system must be labeled with **“Contains FCC ID: R5M4U-BK1201B”** and **“Contains transmitter Module FCC ID: R5M4U-BK1201B”**

2. In the user manual, final system integrator must ensure that there is no instruction provided in the user Manual to install or remove the transmitter module.

3. Transmitter module must be installed used in strict accordance with the Manufacturer's instructions as described in the user documentation that comes with the product. The user manual of the final host system must contain the following statements:
This device complies with Part 15 of the FCC rules. Operation is subject to following Two conditions: 1. this device may not cause harmful interference and 2. This device Must accept any interference received including interference that may cause undesired operation of this device.

The changes or modifications not expressly approved by the party responsible for Compliance could void the user's authority to operate the equipment.

To comply with the FCC RF exposure compliance requirements, this device and its antenna must not Be co-located or operating to conjunction with any other antenna or transmitter,

except if installed In compliance with FCC Multi Transmitter procedures.

To inherit the modular approval, the antennas for this transmitter must be installed to provide a Separation distance of at least 20cm from all persons and must not be co-located or operating in Conjunction with any other antenna or transmitter.

Note:

The buyer of the module who will incorporate this module into his host must submit the final product to the Manufacturer of the module and the MANUFACTURER OF THE MODULE WILL VERIFY that the product Is incorporated in host equipment in a way that is represented by the testing as shown in the test report.

Note:

The module is used AP, Gateway, Household. (except PC.)

Note:

This module is to be installed only in mobile or fixed applications Per FCC rule 2.1091(b):

For purposes of this section, a mobile device is defined as a transmitting device designed to be used in other than fixed locations and to generally be used in such a way that a separation distance of at least 20 centimeters is normally maintained between the transmitter's radiating structure(s) and the body of the user or nearby persons. In this context, the term "fixed location" means that the device is physically secured at one location and is not able to be easily moved to another location. Transmitting devices designed to be used by consumers or workers that can be easily re-located, such as wireless devices associated with a personal computer, are considered to be mobile devices if they meet the 20 centimeter separation requirement.

FCC RF Radiation Exposure Statement

This equipment complies with FCC RF radiation exposure limits set forth for an uncontrolled environment. This device and its antenna must not be co-located or operating in conjunction with any other antenna or transmitter.

"To comply with FCC RF exposure compliance requirements, this grant is applicable to only BIKE Generator. The antennas used for this transmitter must be installed to provide a separation distance of at least 20 cm from all persons and must not be co-located or operating in conjunction with any other antenna or transmitter."

Manual Information To the End User

The OEM integrator has to be aware not to provide information to the end user regarding how to install or remove this RF module in the user's manual of the end product which integrates this module. The end user manual shall include all required regulatory information/warning as show In this manual.