

eInstruction® Touch Board

Quick Start Guide

Contents

Overview and What's in the Box	3
Setting Up	4
Hang Up the Touch Board	4
Install the Content and Software	5
WorkSpace User Guide	6
Connect the eInstruction® Touch Board	6
Connect the Video Projector	7
Touch Board Calibration (Windows® 7)	8
Device Manager Calibration	9
Using Touch Board	10
Gestures (Windows 7)	10
Mouse Actions on the Touch Board	11
Saving, Exporting, and Printing your WorkSpace Presentation	11
Caring for your eInstruction® Touch Board	12
Mobile Solution of eInstruction® Touch Board	13
Software Requirements	14
Warranty	16
Technical Support	19

All copyright, trademark, and intellectual properties associated with eInstruction® are reserved to eInstruction Corporation. All other trademarks are property of their respective holders or owners.

Overview

Congratulations on your new eInstruction® Touch Board. eInstruction gives teachers the ability to engage all types of learners with a high level of interactivity. Built on the popular functionality of the eInstruction® DualBoard™, Touch Board features touch technology. You and your students can interact with the whiteboard using an eInstruction Touch Board pen, Touch Board wand or their finger.

When the eInstruction® Touch Board is combined with one or more Mobi™ mobile interactive devices, they create an interactive, collaborative learning environment that is unsurpassed. Mobi is the first mobile interactive whiteboard designed to support student-centered collaborative learning and give you the freedom and flexibility to manage your class and deliver engaging lessons from anywhere in the room.

The eInstruction® Touch Board comes with the award-winning Workspace software. Workspace enables you to create and assemble the interactive lesson content, and gives you the ability to control the content using the eInstruction Touch Board. It also gives you the ability to incorporate and work with teaching material in multiple formats from any source, including ExamView® content, web-based content or third-party curricula.

**DO NOT ASSEMBLE OR USE THIS PRODUCT BEFORE READING THE INSTALLATION INSTRUCTIONS.
ASSEMBLE AND USE THIS PRODUCT ONLY IN ACCORDANCE WITH THE INSTALLATION INSTRUCTIONS.**

What's in the Box

eInstruction® Touch Board is compatible with most Mac®, Windows®, or Linux® operating systems.

Please see page 14 for complete software requirements.

You will need an available USB port and DVD drive to install Touch Board and Workspace software.

- USB Cable
- 2 bottom anchor clips
- 4 mounting-brackets
- 8 bracket screws
- Touch wand
- Workspace DVD
- Workspace Content DVD
- Wall hanger
- 4 non-electronic eInstruction Touch Board Pens
- eInstruction Touch Board Getting Started Guide



NOTE: We recommend that a skilled professional assess the strength of the wall and determine the appropriate hardware required to securely attach the board to the wall. It will require at least two people to safely lift and mount the board on the wall.

Setting Up

HANG UP THE TOUCH BOARD



Wall hanger taped to back of Touch Board



Mount wall hanger

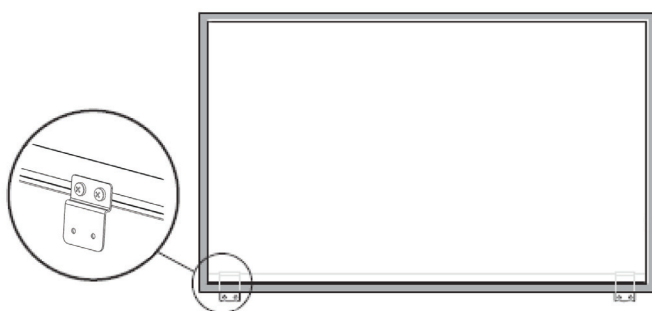
Hang the Touch Board



* Please source appropriate hardware depending on wall construction

Attach the bottom anchor clips.


Use bracket screws to attach anchor clips to board.



INSTALL THE CONTENT AND SOFTWARE

WorkSpace Software and WorkSpace Content (Windows)


1. In order to install the software, your logged-in computer profile should have administrator rights.
2. Insert the WorkSpace DVD into your DVD drive. The DVD will autorun. If the DVD does not autorun, navigate to your DVD drive and double click the autorun.exe file.
3. Follow the on-screen instructions to proceed through the installation process.

You will know WorkSpace has installed successfully by the appearance of the eInstruction icon  in the Windows notification area.*

4. Repeat steps 2 and 3 using the WorkSpace Content DVD to install the WorkSpace Content.

WorkSpace Software and WorkSpace Content (Macintosh)


1. Insert the WorkSpace DVD into your DVD drive. Double click on the WorkSpace DVD icon that will now show on the desktop.
2. Follow the on-screen instructions to proceed through the installation process.

You will know WorkSpace has installed successfully by the appearance of the eInstruction icon  in the Menu Extras (Munulets) area.*

3. Repeat steps 1 and 2 using the WorkSpace Content DVD to install the WorkSpace Content.

WorkSpace Software and WorkSpace Content (Linux)

1. Login as "root" or use "sudo".
2. Insert the WorkSpace DVD into your DVD drive. Double click on the WorkSpace DVD icon that will now show on the desktop.
3. Under permissions: Select **Allow executing file as program.**
4. Follow the on-screen instructions to proceed through the installation process.

You will know WorkSpace has installed successfully by the appearance of the eInstruction icon  in the panel.*

5. Repeat steps 2, 3, and 4 using the WorkSpace Content DVD to install the WorkSpace Content.

* If the eInstruction icon does not appear, reboot.

WORKSPACE USER GUIDE

WorkSpace provides the tools to create and deliver presentations, enhance material with special effects, annotate to highlight key points, add notes incorporating additional information or audience comments, and much more.

Look for the WorkSpace Getting Started Guide or look on the included DVD for an in-depth view of WorkSpace's functions, features and tools, and the basics on how they can be used to prepare, present, save, and distribute presentations.

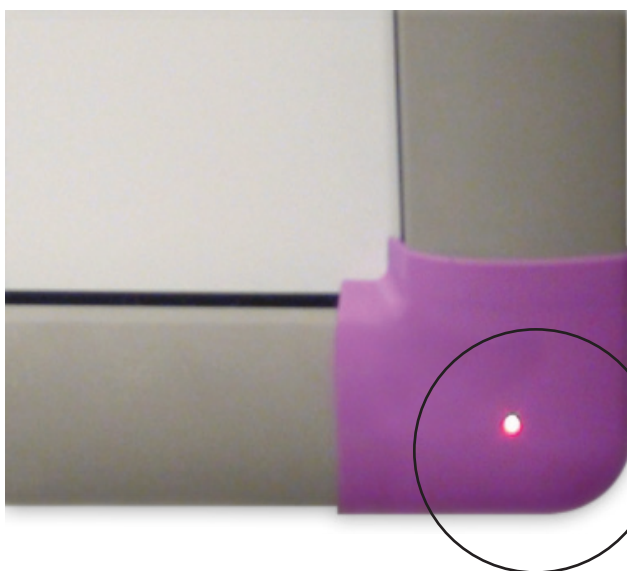
CONNECT THE EINSTRUCTION TOUCH BOARD

The eInstruction® Touch Board connects to your computer via a USB cable.

A separate power supply is not necessary since the eInstruction Touch Board is powered through the USB connection.

Plug the USB cable into the USB port on the back of the board.

Plug the other end of the USB cable into a USB port on your computer or a USB hub connected to your computer.



A red light located at the bottom right corner of the board indicates that the board is receiving power through the USB cable. A blue light indicates proximity of the pen to the board. See picture for indicator light location.

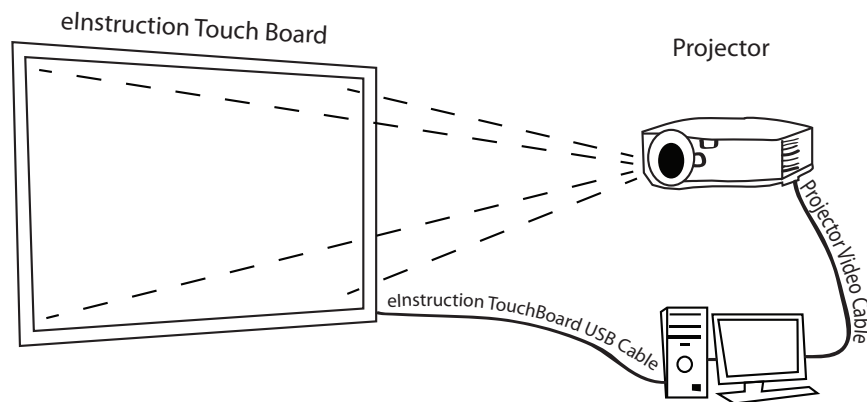
CONNECT THE VIDEO PROJECTOR

When the computer and eInstruction Touch Board are connected and communicating, you can project the computer's image onto the Touch Board.

Power off your computer.

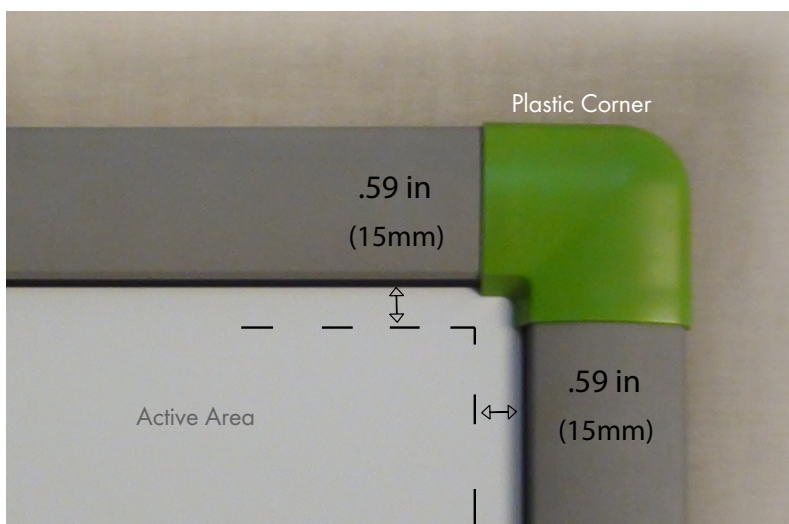
Connect your projector video cable from the computer to the video projector.

Power on your computer. The light at the bottom right corner of the eInstruction Touch Board will turn red.



Turn on the video projector.


With the video projector aimed at the eInstruction Touch Board, align the projected image onto the board so that it is within the board's active area. See picture below for the active area.

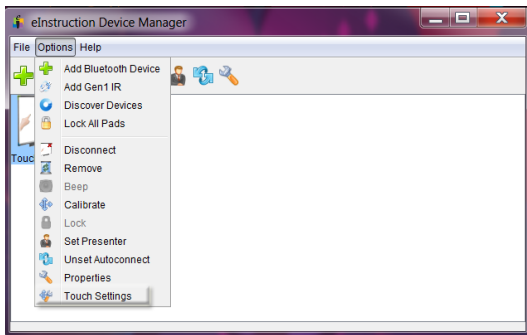


TOUCH BOARD CALIBRATION - WINDOWS 7

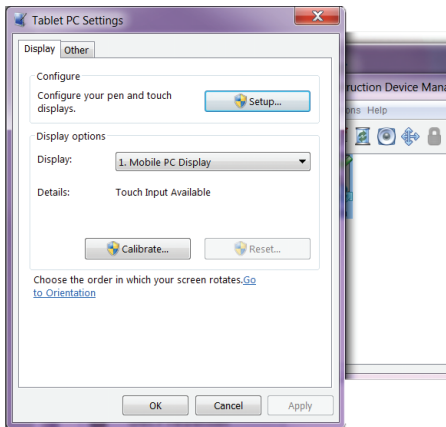
For the initial Touch Board setup, your logged-in computer profile should have administrator rights in order to perform a 16 pt. calibration. Any further calibrations will be a 4 pt. calibration, able to be performed by a standard user.

Manually align the projected image within the elInstruction Touch Board's active area. Use the projector's built-in correction utility to correct for picture distortion.

From your computer, right-click on the  icon in your system tray, on your computer desktop. Select the elInstruction device manager (the icon may be hidden; click on the arrow to reveal the hidden icon) from the menu. Right click on your device with the green check mark in the device manager window. Choose **Touch Settings**.



Touch Settings will open up the operating system's calibration window.




From your operating system's settings window choose **Calibrate**. When prompted, choose **Touch Input**. Follow the instructions on the calibration screen.

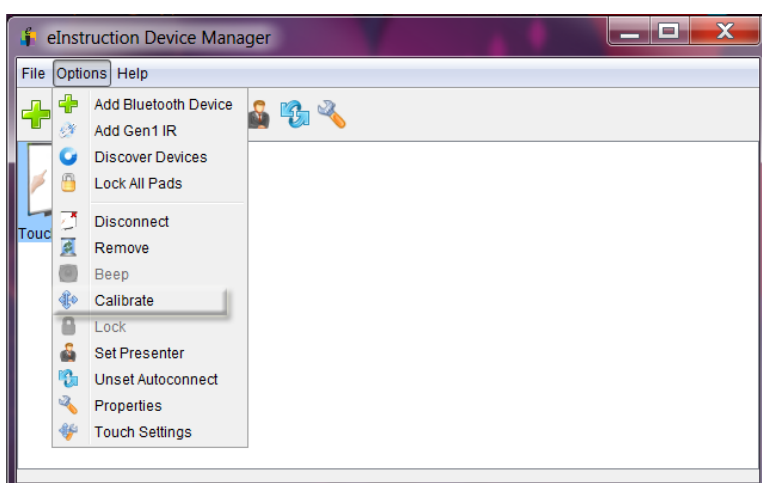
You are now ready to use your elInstruction Touch Board.

DEVICE MANAGER CALIBRATION

Perform this function to use multiple eInstruction devices in Multi-User mode in WorkSpace. Any time the eInstruction Touch Board or video projector is moved, the board should be re-calibrated so that the eInstruction Touch Board pens, the tip of your finger, or Touch wand are properly aligned with the cursor projected onto the board.

TIP: If an error occurs during the calibration process, simply end the process and start over. You must recalibrate any time the projector or the board is moved.

1. Manually align the projected image within the eInstruction Touch Board's active area. Use the projector's built-in correction utility to correct for keystone distortion.
2. From your computer, right-click on the  icon in your system tray, on your computer desktop. Select the eInstruction device manager (the icon may be hidden; click on the arrow to reveal the hidden icon) from the menu. Right click on your device with the green check mark in the device manager window. Choose Calibrate.



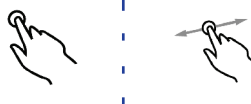


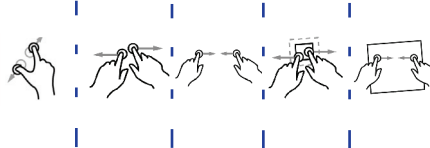


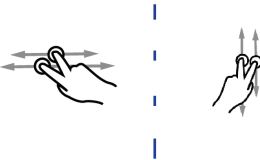
The system will establish a connection with the eInstruction Touch Board and display calibration points.

3. Click on each calibration point on the screen as it appears. The calibration points will disappear when the calibration process is completed.


NOTE: For optimal accuracy, only touch the board with an eInstruction Touch Board pen during the calibration process.

Using Touch Board

GESTURES (WINDOWS 7)

GESTURE	USAGE	GESTURE ACTION	ACTION
Left click	Move items across screen	Touch and release to click	
Double click	To open files and folders	Two quick taps	
Right click	To access context-sensitive drop-down menu	Hold your finger on screen, release after the animation.	
Scale	Zoom in/out on a picture or a web page	Use 2 fingers, using a pinching or pulling apart motion	
Rotate	To rotate content	Use two fingers in a Clockwise or Counterclockwise motion	
One finger flick	Flick or throw objects across the screen	Make quick flick motion in desired direction	
Scrolling	Scrolling through content or a web page	Drag up or down on content or scrollable window	

MOUSE ACTIONS ON THE TOUCH BOARD

MOUSE COMMAND	USAGE	MOUSE ACTION	ACTION
Left click	Opens items; highlights, etc.	Touch and release to click	
Right click	Menu options	Touch, using two fingers	
Double click	To open files and folders	Two quick taps	 <ul style="list-style-type: none"> *a small distance should be between first and second finger *menu will appear by first touch
Drag	To drag items	Move one finger left or right	

TIP: Gestures and/or mouse actions are dependent on the operating system features and the software that the gestures and or mouse actions are being used with.

SAVING, EXPORTING AND PRINTING YOUR WORKSPACE PRESENTATION

When you are finished creating your presentation, WorkSpace has several convenient options for saving and distributing files. WorkSpace also allows you to print your presentation.

These are the file formats for importing, exporting and saving your WorkSpace content.

Save or Save as: GWB – Content can be saved using the WorkSpace native file format (GWB). The GWB file format stores all information and formatting without loss of data. The advantage of saving in a GWB file format is that you can easily open and edit the content with ease as many times as needed.

Save or Save as: IWB – Content can be saved as a Common File Format (IWB). Saving in common file format allows you to share your content with any interactive whiteboard and software if the board and software accepts the IWB formatting. Some formatting and interactivity of content may be lost, due to the ability to exchange information between the two softwares.

Auto Save: By default, the Auto Save feature automatically saves the presentation file every five minutes. You can disable Auto Save or change the frequency of auto saving in Preferences > Options.

E-mail: Content can be e-mailed as a WorkSpace native file format (GWB). Choose to e-mail as a GWB or a PDF.

Export as: Content can be exported into several convenient options such as; PPT, BMP, JPG, GIF, TIFF, PNG, PDF, HTML(.png), HTML(.jpg). The exported file is saved in the My Documents (or Documents)/Interwrite WorkSpace/Export folder.

Export as PDF: Export the currently open presentation file to a PDF format. By default, the PDF file is saved in the My Documents (or Documents)/Interwrite WorkSpace/Export folder.

E-mail as PDF: Content can be e-mailed as a PDF. Content is first saved as a GWB file. The GWB file is converted and attached to a new e-mail, if there is an e-mail client installed.

Print: Content can be printed from the menu bar. File>Print.

CARING FOR YOUR EINSTRUCTION® TOUCH BOARD

Store your elnstruction Touch Board pens

Pens can be magnetically attached to the right side of the elnstruction Touch Board for storage.



Mobile Solution of eInstruction® Touch Board

For a mobile solution of the eInstruction Touch Board please visit us at einstruction.com/contact-us and fill out our request for information form. Our AdjustIt Pro can be moved from room to room with ease, even after the eInstruction Touch Board and projector have been mounted.



Software Requirements

Touch Board Gestures

You must be running Windows 7 or later to use Touch Board Gestures.

WorkSpace

WINDOWS

- Microsoft Windows Vista, Windows 7 or Windows 8 Pro
- Intel® Core2 Duo processor 2GHz equivalent or higher
- 2 GB RAM
- 650 MB hard disk space for installation (550MB additional for additional Content)
- CD-ROM Drive for installation
- Video Card and Monitor capable of XGA (1024 x 768) or higher resolution with minimum of 24-bit color
- Video Card with support for DirectX 9 or greater
- Sound Card with Speakers and microphone for audio video record and playback
- Adobe® Flash Player version 9.0 or higher
- Microsoft .NET Framework 3.0 or greater
- Internet connection require for access to online content and tutorials

MAC®

- Mac OS X, 10.6, 10.7 or 10.8
- PowerPC G4 1GHz or higher
- 32-bit Kernel and Extensions
- 512 MB RAM
- 500 MB hard disk space for installation
- 1024 x 768 or higher resolution video

LINUX®

- Intel Pentium IV Processor 1GHz or higher (or equivalent)
- 512 MB RAM
- 500 MB hard disk space for installation
- 1024 x 768 or higher resolution video
- One available USB Port
- Linux with 2.6 Kernel or greater
- "libusb-1.0" 32-bit (USB support)

LIMITED WARRANTY FOR THE EINSTRUCTION TOUCH BOARD

eInstruction warrants these products to be free from defects in material and workmanship under the following terms. Complete and return the enclosed warranty registration card to ensure that your products are covered by this warranty.

COVERAGE

Parts and labor are warranted for two (2) years from the date of the first consumer purchase for the eInstruction Touch Board, Touch Board Pens, TouchWand, USB cable and accessories. This warranty applies to the original consumer purchaser only.

Contact your local dealer or distributor for additional warranty information.

Warranty is valid only if original consumer's purchase or lease date is less than or equal to six months from the original eInstruction sale date. This information will be captured by the system serial number and confirmed by the reseller's purchase order.

A nominal Warranty Handling Fee will be charged after the first 90 days of use and calculated from the date of original consumer purchase. This payment may be made by Visa, MasterCard, or American Express. A copy of the sales receipt or invoice will be required for warranty verification.

Conditions

Except as specified below, this warranty covers all defects in material or workmanship in the products. The following are not covered by the warranty:

1. Any product on which the serial number has been defaced, modified, or removed (if applicable).
2. Damage, deterioration, or malfunction resulting from:
 - a. Accident, misuse, abuse, neglect, fire, water, lightening, or other acts of nature, unauthorized product modification for any purpose, or failure to follow instructions supplied with the product.
 - b. Repair, or attempted repair, by anyone not authorized by eInstruction.
 - c. Any damage in shipment of the product (claims must be presented to the carrier).
 - d. Any other cause which does not relate to a manufacturing defect.
3. Any product not sold or leased to a consumer within six months of eInstruction's original sale date. eInstruction will pay all labor and material expenses for covered items, but will not pay for the following:
 1. Removal or installation charges.
 2. Costs for initial technical adjustments (set up), including adjustments of user controls.
 3. Certain shipping charges. (Payment of shipping charges is discussed in the next section of this warranty.)
 4. Packaging costs. (Customers should keep their boxes.)

WARRANTY SERVICE PROCEDURES

1. To obtain service on your eInstruction product, contact the Technical Support Department to receive a Return Material Authorization Number (RMA#) and shipping instructions by calling:
In United States: (480) 443-2214 (MST) In EMEA: +33 1.58.31.10.65 (CET)
2. Ship the product to eInstruction with the RMA# marked clearly on the outside of the box. eInstruction reserves the right to refuse the shipment, if not properly marked.
3. Although the consumer must pay any shipping charges to ship the product to eInstruction for warranty service after 90 days of the invoice date, eInstruction will pay the return shipping charges for ground shipment. Other shipping options are available at an additional fee.
4. Whenever warranty service is required, the original dated sales invoice (or a copy) must be presented as proof of warranty coverage, and should be included in shipment of the product. In addition, please include your name, address, telephone number, fax number, email address, and a description of the problem.
5. If eInstruction determines that the unit is not defective within the terms of the warranty, the consumer shall pay the cost of all freight charges, as well as any repair charges.

TECHNICAL SUPPORT

Web-based Technical Support is available free of charge at: www.einstruction.com and www.einstruction.eu, where current driver releases, as well as comprehensive technical support, troubleshooting, Technical Bulletins and FAQs can be found.

Telephone Technical Support is available free of charge to the original consumer for a period of 90 days from the date of purchase of the product. Please contact our Technical Support Department:

In United States: (480) 443-2214 (MST) In EMEA: +33 1.58.31.10.65 (CET)

You can also fax your request to:

In United States: (480) 948-5508 In EMEA: +33 1.58.31.10.69 (CET)

Our toll-free number in the U.S. is: 800-856-0732 (MST)

DISCLAIMER OF UNSTATED WARRANTIES

The warranty printed above is the only warranty applicable to this purchase. ALL OTHER WARRANTIES, EXPRESSED OR IMPLIED, INCLUDING, BUT NOT LIMITED TO, THE IMPLIED WARRANTIES OF MERCHANTABILITY AND FITNESS FOR A PARTICULAR PURPOSE ARE DISCLAIMED. Assuming the warranty above stated is otherwise applicable, it is expressly understood and agreed that eInstruction's sole liability, whether in contract, tort, under any warranty, in negligence, or otherwise, shall be for the repair or replacement of the defective parts, and under no circumstances shall eInstruction be liable for special, indirect, or consequential damages. The price stated and paid for the equipment is a consideration in limiting eInstruction's liability.

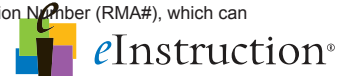
NOTICE

Some states and provinces do not allow the exclusion or limitation of incidental or consequential damages, so the above exclusion may not apply to you. This warranty gives you specific legal rights, and you may have other rights, which vary from state to state, or province to province.

To obtain service on your eInstruction product, call our Technical Support Department at (480) 443-2214 (MST), or fax us at (480) 948-5508 (MST); in EMEA call +33 1.58.31.10.65 (CET), or fax us at +33 1.58.31.10.69 (CET).

We can also be contacted through our Web site at www.einstruction.com (in US) and www.einstruction.eu (EMEA), or at emea.support@einstruction.com.

Important! All products returned to eInstruction for service must have prior approval in the form of a Return Merchandise Authorization Number (RMA#), which can be obtained by calling the Technical Support Department.





Declaration of Conformity

The "CE" mark on this device indicates compliance according to 2004/108/EC

Declaration of conformity according to ISO/IEC guide 22 and en 45014

Manufacturer's Name: eInstruction.
Manufacturer's Address: 1330 Teasley Lane
 Denton, TX 76205

declares, that the product

Product Name: Touch Board
Model Numbers: EITB2078, EITB2088
Product Options: Board

conforms to the following specifications:

EMC:

En 55022:2006+A1:2007
 En 61000-3-2:2006
 En 61000-3-3:2006
 En 55024:1998+A2:2003

RoHS: These products are RoHS-compliant. 2002/95/EC

Supplementary Information

The product herewith complies with the requirements of the Low Voltage Directive 2006/95/EC and the EMC Directive 2004/108/EC and older Directives 92/31/EEC, 89/336/EEC

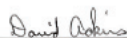
Other - 90/270/EEC- Does not Apply.

Location: Scottsdale, Arizona, U.S.A.

Date: April 4 2010

Dir of Engineering: David Adkins

European Headquarters
26/36 rue Alfred Nobel
93600 Aulnay Sous Bois, France
Phone +33 (0) 1.58.31.10.70
Fax +33 (0) 1.58.31.10.69

Signed by: 
 David Adkins
 Manager of Hardware Engineering
 Scottsdale, Arizona, U.S.A.
 Location
 12-3-2012
 Date

**FCC Compliance**

Tested to 47 CFR PART 15 & ansi C63.4 for Class B of electromagnetic compatibility.

This device complies with Part 15 of the FCC Rules Operation is subject to the following two conditions: (1) this device may not cause interference and (2) this device must accept any interference, including interference that may cause undesired operation of the device. The user is cautioned that changes or modifications to the device that are not approved by the manufacturer could void user's authority to operate the device.

European Union WEEE Directive

The manufacture of this equipment required the extraction and use of natural resources. It may contain hazardous substances that could impact health and the environment.

- In order to avoid the dissemination of the hazardous substances into the environment and to diminish the pressure on our natural resources, we encourage you to return this product to the appropriate take-back system facility. These facilities reuse or recycle most of the materials in this equipment in a responsible way.
- The crossed-out wheeled bin symbol below invites you to use these take-back systems.
- If you need more information about the collection, reuse and recycling systems in your area, please contact your local or regional waste authority.
- Further information about the responsible end-of-life management of this and other eInstruction Learning products is available on our Web site at www.einstruction.com.

Technical Support

ONLINE SUPPORT

Visit **einstruction.com** / **einstruction.eu** for support:

- downloads
- knowledge base tutorials and technical bulletins
- live chat assistance
- training videos
- weekly training webinars

TELEPHONE SUPPORT

USA: 480.443.2214 or 800.856.0732

Latin America: 1.866.496.4949

APAC EMEA: +33 (0) 1.58.31.10.70

TRAINING

For information about on-site training sessions, send an e-mail to **training@einstruction.com**.

- *Do not assemble or use this product before reading the installation instructions. Assemble and use this product only in accordance with the installation instructions.*

