

# User's Manual of ICS-G101C

**January 2004**

## **FCC NOTICE**

THIS DEVICE COMPLIES WITH PART 15 OF THE FCC RULES.  
OPERATION IS SUBJECT TO THE FOLLOWING TWO CONDITION:  
(1) THIS DEVICE MAY NOT CAUSE HARMFUL INTERFERENCE, AND  
(2) THIS DEVICE MUST ACCEPT ANY INTERFERENCE RECEIVED,  
INCLUDING INTERFERENCE THAT MAY CAUSE UNDERSIRED  
OPERATION.

This equipment has been tested and found to comply with the limits for a Class B digital device, pursuant to part 15 of the FCC Rules. These limits are designed to provide reasonable protection against harmful interference in a residential installation.

This equipment generates, uses and can radiate radio frequency energy and, if not installed and used in accordance with the instructions, may cause harmful interference to radio communication. However, there is no guarantee that interference will not occur in a particular installation. If this equipment does cause harmful interference to radio or television reception, which can be determined by turning the equipment off and on, the user is encouraged to try to correct the interference by one or more of the following measures :

- Reorient or relocate the receiving antenna.
- Increase the separation between the equipment and receiver.
- Connect the equipment into an outlet on a circuit different from that to which the receiver is connected.
- Consult the dealer or an experienced radio/TV technician for help.

NOTE : The manufacturer is not responsible for any radio or TV interference caused by unauthorized modifications to this equipment. Such modifications could void the user's authority to operate the equipment.

## Table of Contents

1.0 Getting started-----	2
1.1 Package contents-----	2
1.2 Connectors and switches-----	3
2.0 Installation-----	4
2.1 Typical installation procedure-----	4
2.2 Dynamic IP mode-----	5
2.2.1 TCP/IP Settings-----	5
2.2.2 Illustration with xDSL and Cable modem-----	7
3.0 PPPoE Users-----	8
3.1 Login Page for PPPoE Users-----	8
3.2 Reboot page -----	11
4.0 Static IP Users-----	12
4.1 Login Page for Static IP Users-----	12
4.2 Router Function-----	15
5.0 LEDs-----	16
6.0 Troubleshooting-----	17
7.0 Calling Features-----	17
8.0 Operating environments-----	18

Thank you for your subscription, now you can ***use the power of the internet for significant savings on your phone service.*** This manual will help you connect to the network using your existing phones with your ICS-G101C. We look forward to serving you for many years to come.

Note 1) Most customers will use the “typical Installation” section of this install guide to setup their ICS-G101C. However, for the small percentage who will use a PPPoE Connection (ADSL), you will need the User ID and Password from your (ISP) internet service provider. This is a common request and should be easy to obtain.

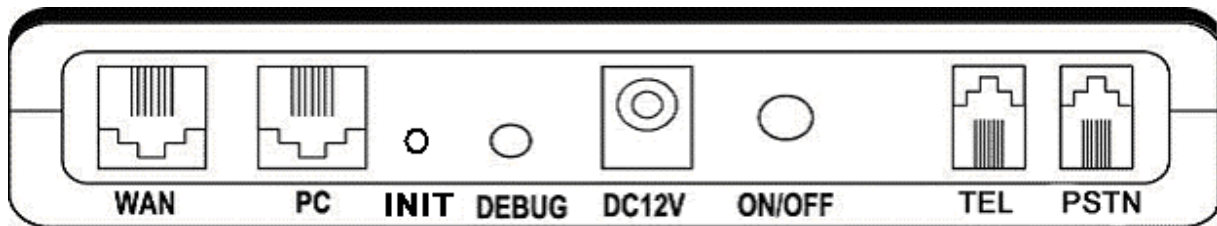
## 1.1 Package Contents

Please be sure to check the box contents for the following items before beginning the installation process.

Items	Quantity	Remarks
ICS-G101C main device	1	
Stand	1	
AC Power Adapter	1	
Telephone cable	2	RJ-11 Telephone cables
LAN cable	1	RJ-45 Ethernet Cable
Manual	1	

## 1.2 Connectors and Switches

Take a moment to become familiar with the connectors on the rear of the ICS-G101C shown in the illustration below. The table provides a brief description of each connector and switch.



Connectors	Type	Descriptions
WAN	RJ-45	10/100 Base-T Ethernet Connection to WAN-side networking device (i.e. cable modem, xDSL, etc.)
PC	RJ-45	10/100 Base-T Ethernet Connection to PC or Hub
INIT	Switch	Factory Default Switch
DEBUG	Audio Jack	ICS-G101C Monitoring and Configuration
DC/12V	Jack	Connection to DC+12V/600mA
ON/OFF	Switch	Power On/Off Switch
TEL	RJ-11	Telephone Port
PSTN	RJ-11	PSTN Port Connection (FXO connection)

## 2.1 Typical Installation Procedure

Please follow the steps below very closely:

- STEP 1** Power off your broadband modem and computer.
- STEP 2** Disconnect the Ethernet cable from your computer and connect it to the “WAN” port on the ICS-G101C.
- STEP 3** Connect either end of the Ethernet cable shipped with the ICS-G101C into the PC port on the ICS-G101C, then connect the other end into the Ethernet port on your computer.
- STEP 4** Connect a telephone cable (RJ11) from “TEL” port on the ICS-G101C to your telephone.
- STEP 5** Connect PSTN telephony Line to “PSTN” port on the ICS-G101C
- STEP 6** Connect the power adaptor that was shipped with the ICS-G101C into the power port on the ICS-G101C then plug the adaptor into your power source.
- STEP 7** Power on your broadband modem and power on the ICS-G101C using the white on/off button located on the back of the ICS-G101C, then power on your computer. (Fig: 2.2.4 “page 7”)
- STEP 8** Check to make sure that your computer is set to automatically receive a dynamic IP address. Please refer to page 5 section 2.2 Dynamic IP mode

## 2.2 Dynamic IP mode

(The example illustrations shown below may vary slightly depending on the version of Windows®)

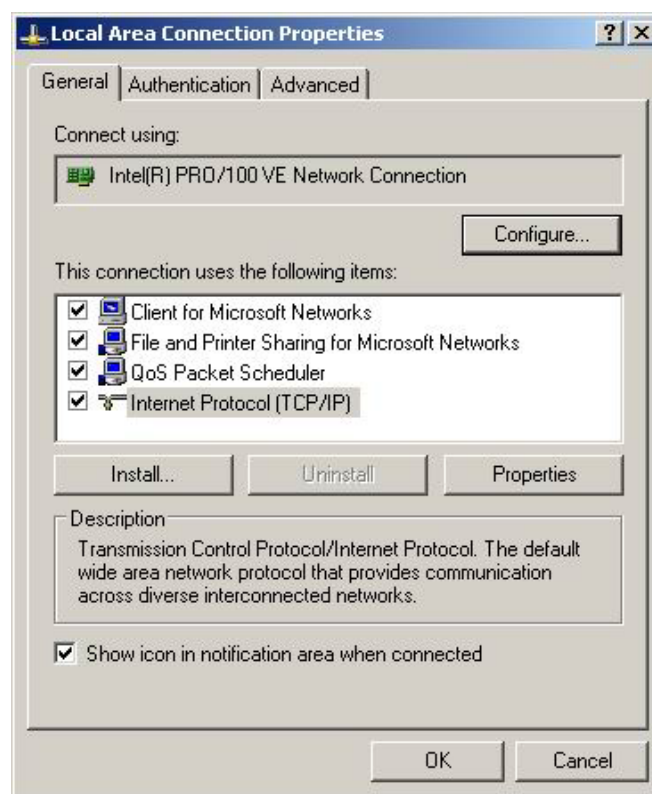
### 2.2.1 TCP/IP Settings

Select Start then Control Panel.

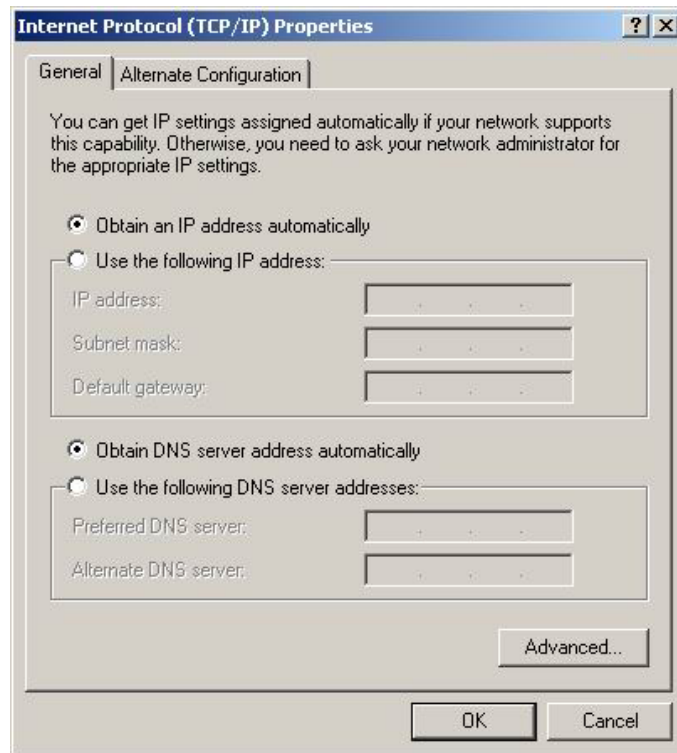
Select Network Connections.

Right-Click Local Area Connection and select Properties.

Select Internet Protocol (TCP/IP) and Select Properties.



Select "Obtain an IP Address automatically" and "Obtain DNS server address automatically"

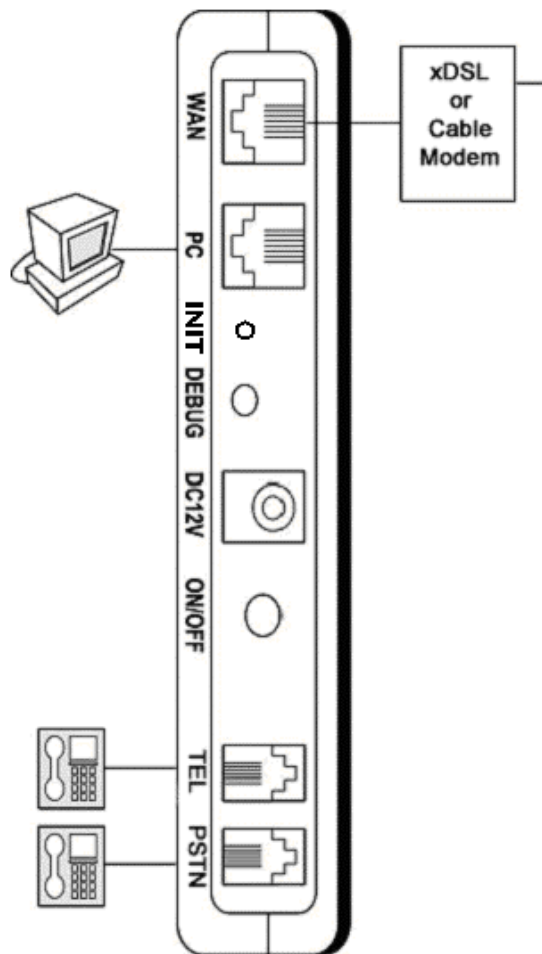


Select OK button

Depending on the version Windows® you may have to reboot your system.  
After rebooting, you can begin using your service.



### 2.2.2 The illustration is shown as an xDSL modem or cable modem

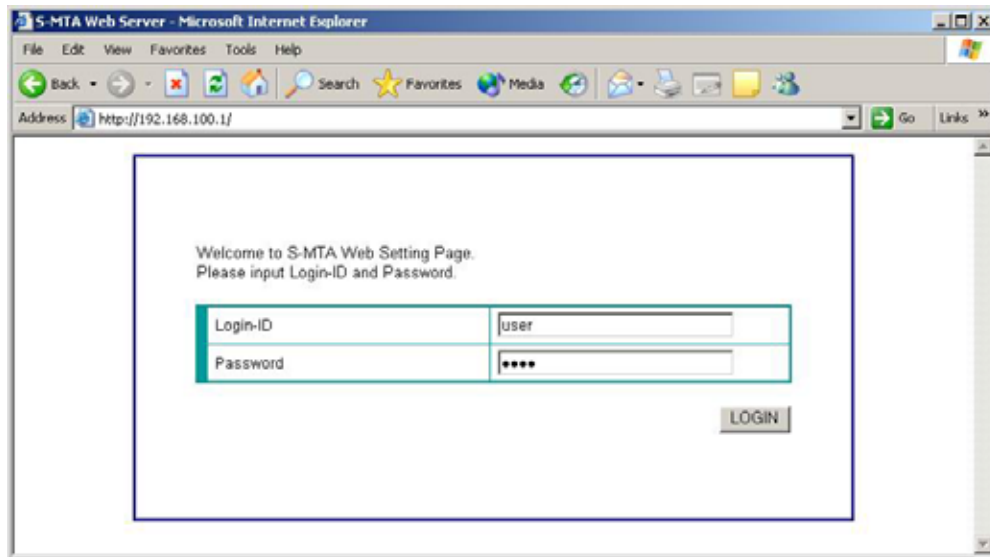


## 3.0 PPPoE Users

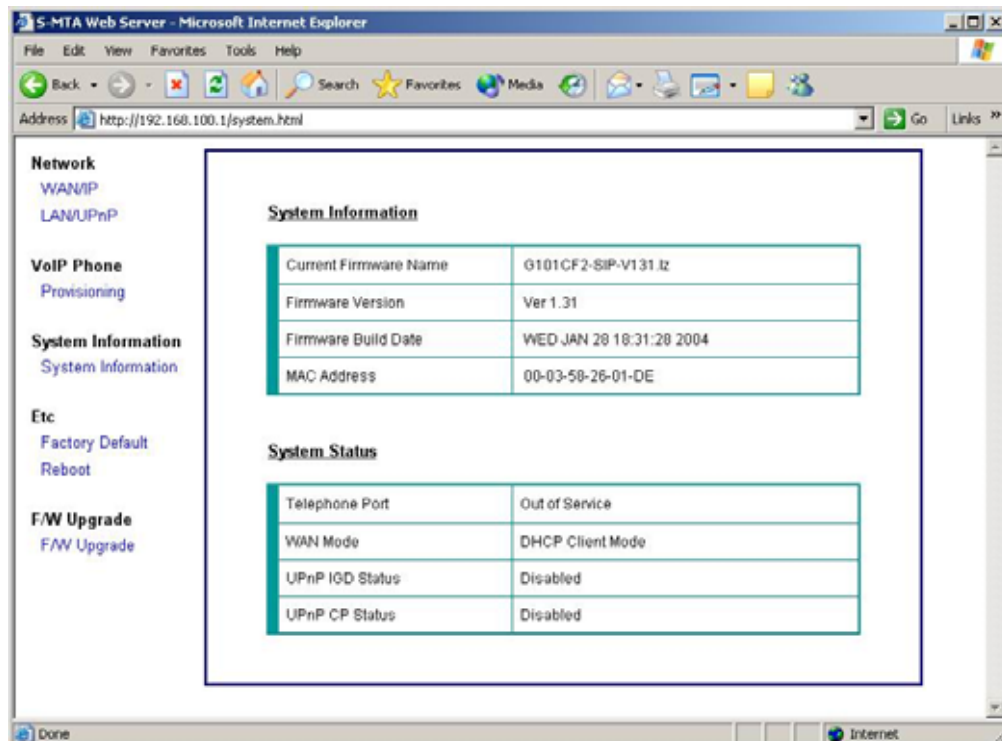
The ICS-G101C provides embedded web pages to configure the user ID and password for PPPoE mode. You must access the embedded web pages to enter the information necessary for the ICS-G101C to log into your ISP.

### 3.1 Login Page for PPPoE Users

1. To access the login page open your browser and type <http://192.168.100.1> in the address field of your web browser; the login page will appear.



2. Enter the "Login-ID" (**user**) and the "Password" (**user**) then click the "Login" button, the web browser will be automatically redirected to the main menu page.



- Click the WAN/IP link located under the Network heading on the left side of this page. The web browser will be automatically redirected to the IP configuration page.

S-MTA Web Server - Microsoft Internet Explorer

File Edit View Favorites Tools Help

Back Forward Stop Search Favorites Media

Address http://192.168.100.1/network.html Go Links

**Network**  
WAN/IP  
LAN/UPnP

**VoIP Phone**  
Provisioning

**System Information**  
System Information

**Etc**  
Factory Default  
Reboot

**F/W Upgrade**  
F/W Upgrade

**WAN Configuration**

WAN Setting	<input checked="" type="radio"/> Auto <input type="radio"/> Manual
WAN Access Interface	<input checked="" type="radio"/> PPPoE <input type="radio"/> Ethernet
PPPoE User Name	<input type="text"/>
PPPoE User Password	<input type="text"/>

**IP Configuration**

IP Type	<input checked="" type="radio"/> Dynamic IP <input type="radio"/> Static IP
IP Address	<input type="text" value="0.0.0.0"/>
Gateway IP	<input type="text" value="0.0.0.0"/>
Subnet Mask	<input type="text" value="0.0.0.0"/>
DNS Server Configuration	<input checked="" type="radio"/> Automatic <input type="radio"/> Manual
Primary DNS IP	<input type="text" value="0.0.0.0"/>
Secondary DNS IP	<input type="text" value="0.0.0.0"/>
MTA Mac Address	<input checked="" type="radio"/> Original Mac Address <input type="radio"/> Custom Mac Address <input type="text" value="00-03-58-00-00-00"/>
MTU size	<input checked="" type="radio"/> Automatic <input type="radio"/> Manual <input type="text" value="0"/>

Submit

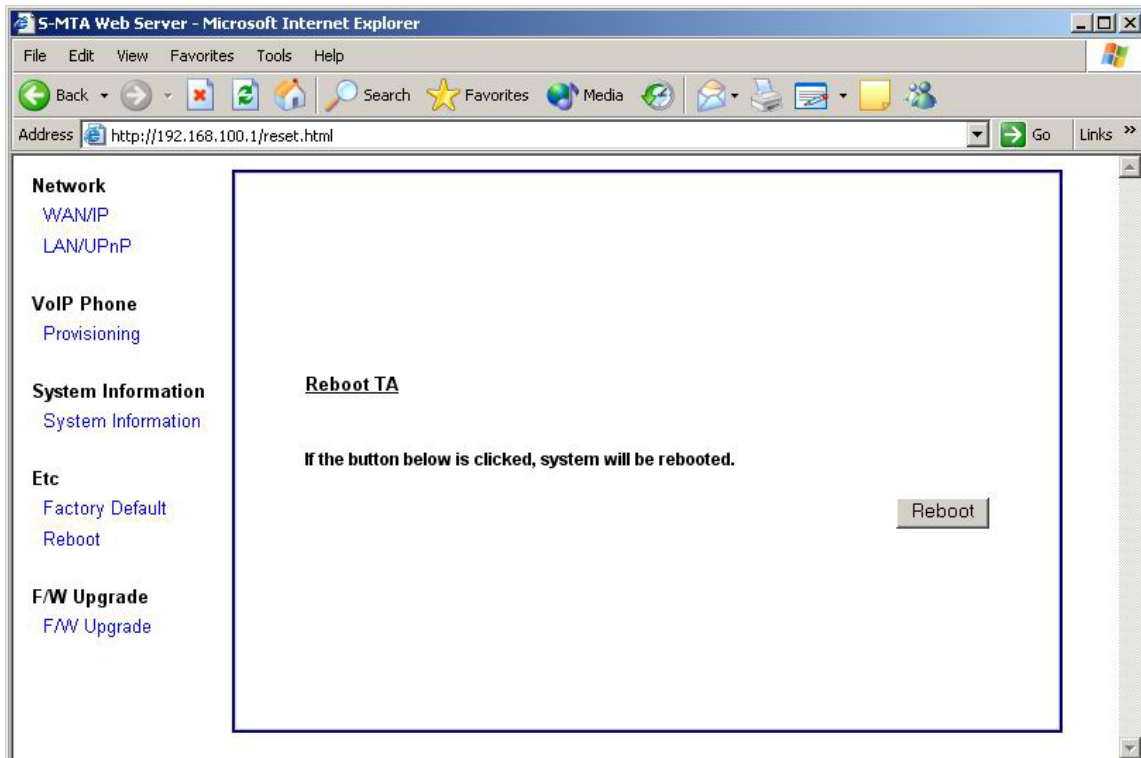
- To reflect configurations changed, You must reboot system.

- Change the WAN Setting from auto to manual by selecting the circle in front of the word "Manual".
- Change the WAN Access Interface from Ethernet to PPPoE by selecting the circle in front of the word "PPPoE".
- Enter your User ID in the PPPoE user name field. NOTE: It must be entered exactly as provided to you by your ISP.

7. Enter your Password in the PPPoE user password field. NOTE: It must be entered exactly as provided to you by your ISP.
8. After you have entered the User ID and Password you must save your changes by selecting SUBMIT at the bottom of this page.
9. After you receive the “configuration change is successful” message you must reboot the ICS-G101C. (Refer to section 3.2 Reboot)

### 3.2 Reboot Page

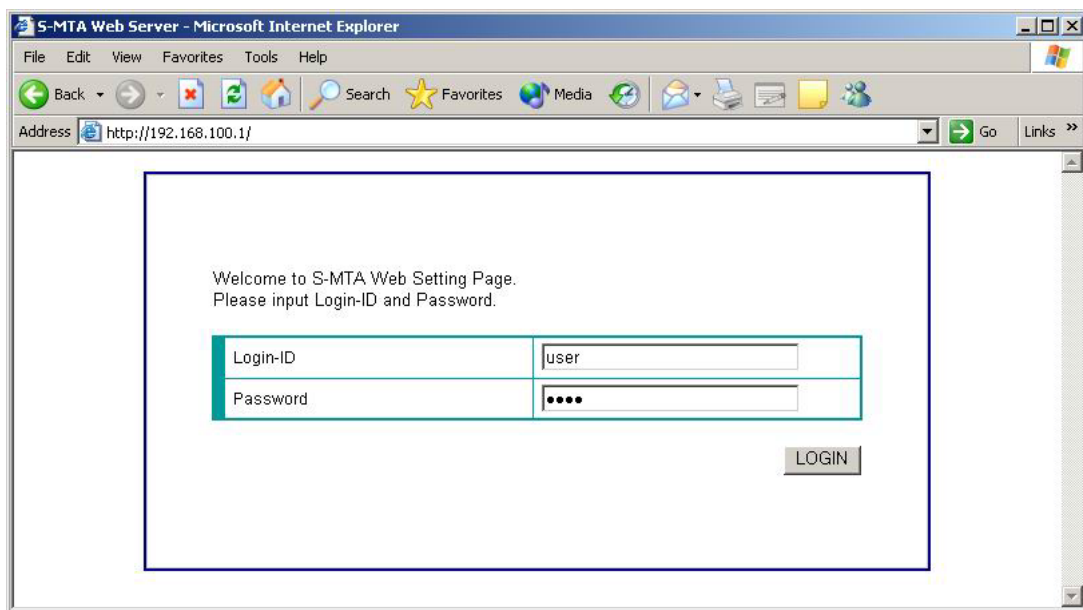
Select the “Reboot” link located on the left side of the page then select the “REBOOT” button on the right side of the page; the ICS-G101C will reboot automatically. You can close the web page at this time and try your service using the ICS-G101C.



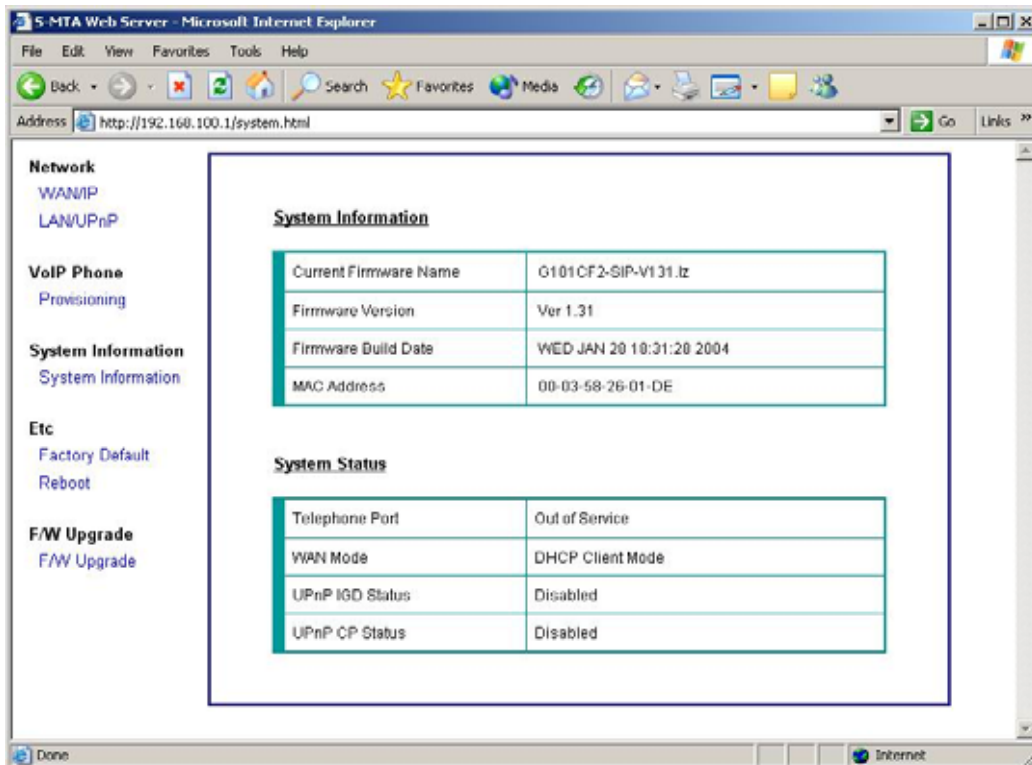
## 4.0 Static IP Users

### 4.1 Login Page for Static IP Users

1. To access the login page open your browser and type <http://192.168.100.1> at the address field of your web browser. The login page will appear.



2. Enter the Login-ID (**user**) and the "Password" (**user**) then click the "Login" button. The web browser will be redirected to the main menu page automatically.



3. Click the “WAN/IP” link located under the Network heading on the left side of this page. The web browser will be automatically redirected to the IP configuration page.

S-MTA Web Server - Microsoft Internet Explorer

File Edit View Favorites Tools Help

Back Forward Stop Home Search Favorites Media Print Mail News RSS Feeds

Address http://192.168.100.1/network.html Go Links

**Network**

WAN/IP

LAN/UPnP

**VoIP Phone**

Provisioning

**System Information**

System Information

**Etc**

Factory Default

Reboot

**F/W Upgrade**

F/W Upgrade

**WAN Configuration**

WAN Setting	<input checked="" type="radio"/> Auto <input type="radio"/> Manual
WAN Access Interface	<input checked="" type="radio"/> PPPoE <input type="radio"/> Ethernet
PPPoE User Name	<input type="text"/>
PPPoE User Password	<input type="text"/>

**IP Configuration**

IP Type	<input checked="" type="radio"/> Dynamic IP <input type="radio"/> Static IP
IP Address	<input type="text" value="0.0.0.0"/>
Gateway IP	<input type="text" value="0.0.0.0"/>
Subnet Mask	<input type="text" value="0.0.0.0"/>
DNS Server Configuration	<input checked="" type="radio"/> Automatic <input type="radio"/> Manual
Primary DNS IP	<input type="text" value="0.0.0.0"/>
Secondary DNS IP	<input type="text" value="0.0.0.0"/>
MTA Mac Address	<input checked="" type="radio"/> Original Mac Address <input type="radio"/> Custom Mac Address <input type="text" value="00-03-58-00-00-00"/>
MTU size	<input checked="" type="radio"/> Automatic <input type="radio"/> Manual <input type="text" value="0"/>

Submit

- To reflect configurations changed, You must reboot system.

- Change the WAN Setting from auto to manual by selecting the circle in front of the word "Manual".
- Change the IP Type from Dynamic to Static IP by selecting the circle in front of the word "Static IP".
- Enter your **IP Address**

7. Enter your **Gateway IP**
8. Enter your **Subnet Mask**
9. Change the **DNS Server** setting from “Automatic” to “Manual” by clicking the circle in front of the word “Manual”.
10. Enter your **Primary DNS Server IP** (This is a mandatory.)
11. Enter your **Secondary DNS Server IP** (This is an optional field.)
12. After you have entered the above information in the correct fields you must save your changes by selecting SUBMIT at the bottom of this page.
13. After you receive the “configuration change is successful” message you must reboot the ICS-G101C. (Refer to section 3.2 Reboot)

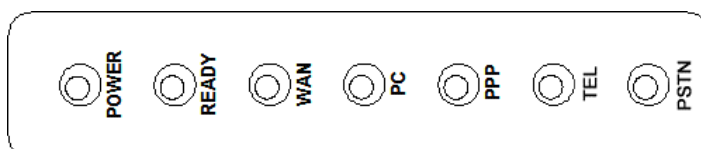
## 4.2 Router Function

This ICS-G101C has built-in router functions and when connected to the PC , will handle all packets between “WAN-port and PC-port enabling the DHCP server function and NAT function to support internet functionally .



## 5.0 LEDs

This ICS-G101C has 7 status LEDs indicating POWER, READY, WAN, PC, PPP, TEL, and PSTN that enables users to diagnose the ICS-G101C's status during installation or use.



LEDs	Status	Descriptions
POWER	ON	Power is On.
	OFF	Power is Off
READY	ON	The data function is enabled.
	OFF	The data function is not enabled.
	BLINKING	Trying to acquire ICS-G101C's own IP address.
WAN	ON	Internet device such as cable mode, xDSL modem, or Hub is connected on WAN port.
	OFF	No connection on WAN port.
PC	ON	PC or notebook is connected on LAN port.
	OFF	No connection on LAN port.
PPP	ON	PPPoE mode.
	OFF	Dynamic IP or Static IP mode.
TEL	ON	ICS-G101C succeeds to register to the proxy server.
	OFF	ICS-G101C fails to register to the proxy server.
	BLINKING	During a call.
PSTN	ON	PSTN line is detected and not in use
	OFF	PSTN line is not detected

	BLINKING	PSTN line is detected and in use
--	----------	----------------------------------

## 6.0 Troubleshooting

### There is no dial tone:

1. Check to make sure that your phone is plugged into the ICS-G101C's "TEL port"
2. Check to make sure that the "TEL" light is on. If the TEL light is not on check all of the connections and then reboot the xDSL or Cable modem.

## 7.0 Calling Features

### Call Hold

1. During a call, (regardless of an incoming call or an outgoing call)
2. Push the **FLASH** hook (you will hear the **stutter dial tone**)
3. Hang up
4. In order to return the previous call, pick up the handset.

### Call Waiting

1. During a call, (regardless of an incoming call or an outgoing call)
2. When there is another incoming call, the **call waiting tone** will sound every 5 seconds.
3. If you want to receive the incoming call, please push the **FLASH** hook. Your phone will be switched to the other call after placing the first call on hold.
4. Use the **FLASH** hook as long as you want to switch between the 2 calls.

### Three-way Call

1. During a call, (regardless of an incoming call or an outgoing call)
2. If you want to make an another call, please push the **FLASH** hook, then you will hear the **stutter dial tone**
3. Dial your second destination number after the **stutter dial tone**
4. After the second call has established, push the **FLASH** hook, and enjoy the three-way calling.

### How to set Call Forwarding

1. During the dial tone (after you pick up the handset)
2. Please dial **"\*72 + telephone-number"**

3. After you hear the confirm tone, hang up the handset.

#### **How to release Call Forwarding**

1. During a dial tone (after you pick up the handset)
2. Please dial **"\*73"**
3. After you hear the confirm tone, please hang up the handset

## **8.0 PSTN Calling**

### **How to switch to PSTN service manually**

If you want to switch to PSTN service manually, press **"\*\*\*"**

Then, you hear melody and dialtone coming in from the PSTN

Now you are able to use PSTN service.

Note that **"\*\*\*"** is a default value and may be changed.

### **How to switch to PSTN service automatically**

The PSTN digitmap is already set by provisioning

So, if you press the matched number in PSTN digitmap, for example, 911.

When the power is off, WAN is disconnected or  
the VoIP service is not available

You hear the melody and dialtone coming in from the PSTN

The call will be directed to PSTN.

## **9.0 Operating Environments**

<b>Power Adapter</b>	Input	AC 100V~240V, 50Hz/60Hz
	Output	DC+12V/600mA
<b>Consumptions</b>	Max 11W	
<b>Size</b>	160mm(D) x 175mm(W) x 34mm(H)	
<b>Weight</b>	314 g	
<b>Temperature</b>	0 ~ 40	
<b>Humidity</b>	10 ~ 90%	

