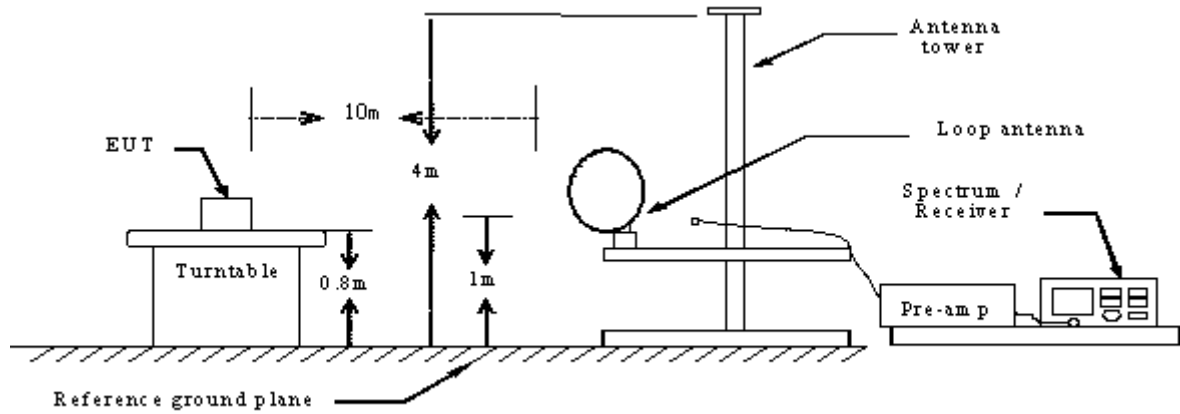


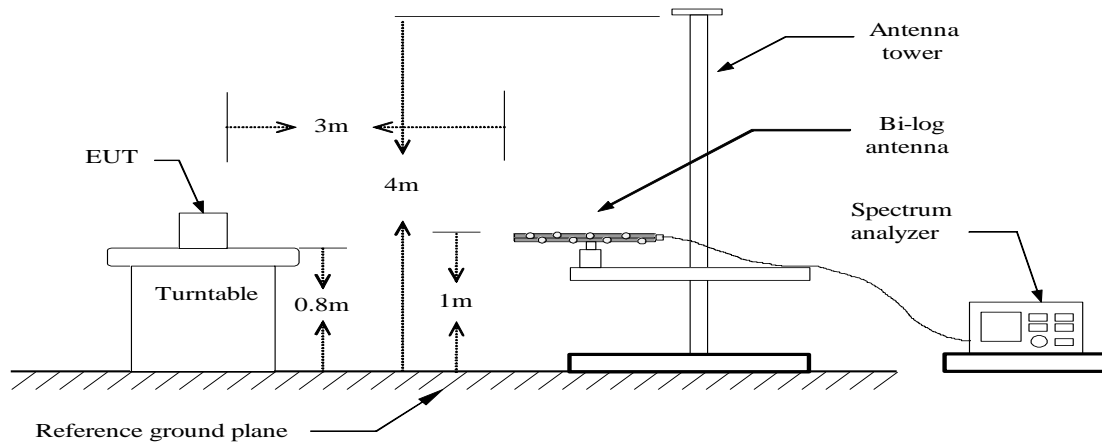
10. SPURIOUS EMISSIONS (RADIATION)

10.1 TEST SETUP

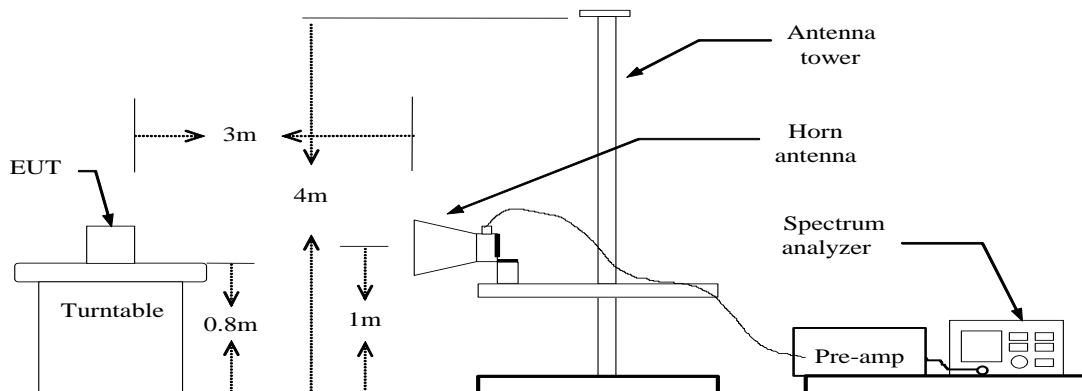
Radiated Spurious Measurement: below 30MHz



Radiated Spurious Measurement: below 1GHz



Radiated Spurious Measurement: above 1GHz



10.2 LIMITS

Frequency (MHz)	Limits (dBuV/m)	Measured distance (m)
0.009-0.490	107.6-72.9	10
0.490-1.705	52.8-42.1	
1.705-30.0	49	
30~88	40	3
88~216	43.5	
216-960	46	
Above 960	54	

Notes: the calculate formula for below 30MHz

$$L2 = 20\lg(L1) + 40\lg(d1/d2)$$

L2: is the specified limit in dB microvolts per metre at distance d2.

L1: is the specified limit in microvolts per metre at distance d1.

For example:

L1 = 2400/9 (μV/m), d1 = 300 (m), d2 = 10 (m), so L2 as follows:

$$20\lg(2400/9) + 40\lg(300/10) = 107.6(\text{dB}\mu\text{V/m})$$

10.3 TEST PROCEDURE

Radiated Emission (9 kHz – 30 MHz) :

Spurious emissions from the EUT are measured in the frequency range of 9 kHz to 30 MHz using a tuned receiver and a shielded loop antenna. The antenna was positioned 3, 10 or 30 meters horizontally from the EUT. Measurements have been made in all three orthogonal axes and the shielded loop antenna was rotated to locate the maximum of the emissions. The emission limits are based on measurements employing a CISPR quasi-peak detector except for the frequency bands 9-90 kHz, 110-490 kHz.

Radiated Emission (30 MHz – 1000 MHz) :

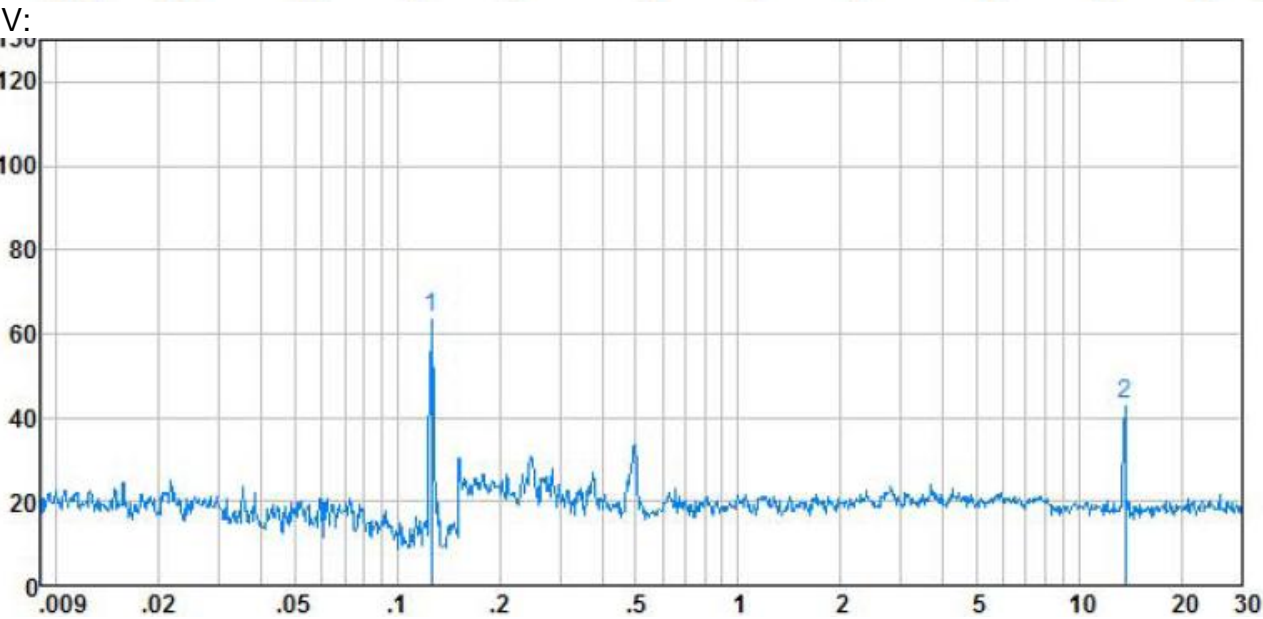
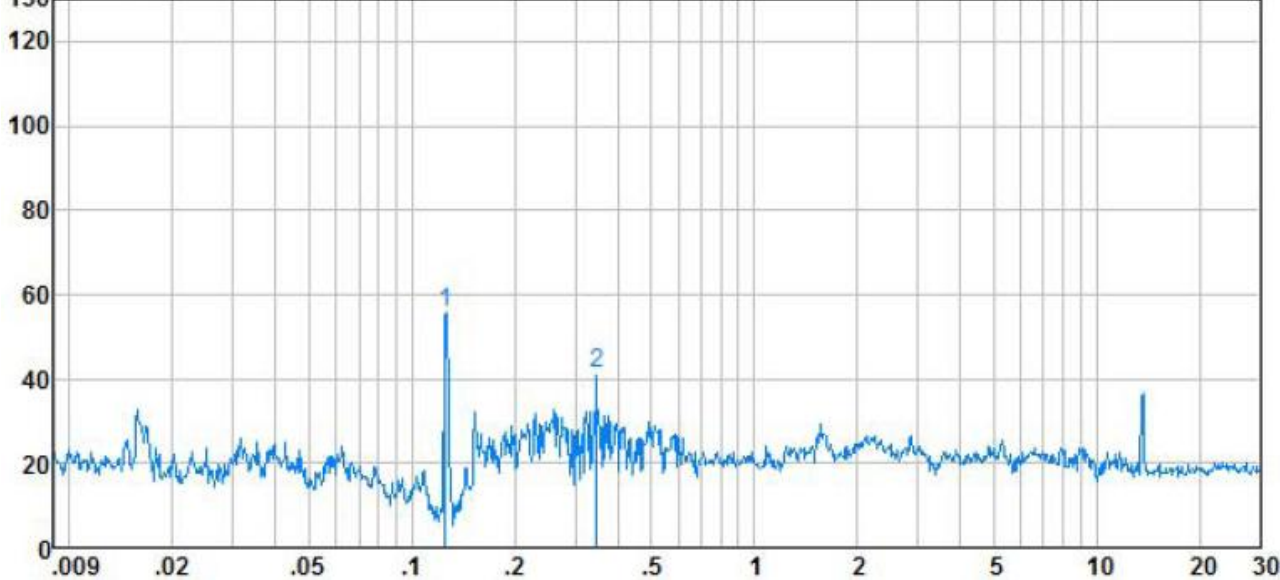
According to description of ANSI C63.4: 2009 sec.13.4, the preliminary radiated emissions measurement were carried out. The preliminary radiated measurements were performed at the measurement distance that specified for compliance to determine the emission characteristics of the EUT. The EUT configuration (in X, Y and Z axis), cable configuration and mode of operation were determined for producing the maximum level of emissions. These configurations were used for the final radiated emissions measurements. The measurement is carried out using a spectrum analyzer or receiver. The Quasi-peak detector is used and RBW is set to 120kHz. The antenna height and turn table rotation is adjusted until the maximum power value is founded on spectrum analyzer or receiver.

Radiated Emission (Above 1 GHz) :

According to description of ANSI C63.4: 2009 sec.13.4, the preliminary radiated emissions measurement were carried out. The preliminary radiated measurements were performed at the measurement distance that specified for compliance to determine the emission characteristics of the EUT. The EUT configuration (in X, Y and Z axis), cable configuration and mode of operation were determined for producing the maximum level of emissions. These configurations were used for the final radiated emissions measurements. The measurement is carried out using a spectrum analyzer or receiver. The spectrum analyzer scans from 1GHz to 25GHz (higher than the 10th harmonic of the carrier). The peak detector is used for Peak limit and RBW is set to 1MHz ,VBW \geq 3RBW. The peak detector is used for Average limit and RBW is set to 1MHz ,VBW is not smaller than 1/T, T = to the shortest pulse width. The antenna height and turn table rotation is adjusted until the maximum power value is founded on spectrum analyzer or receiver.

10.4 RESULTS & PERFORMANCE

From 9KHz to 30MHz:
802.11b, traffic mode; Channel 1
H:



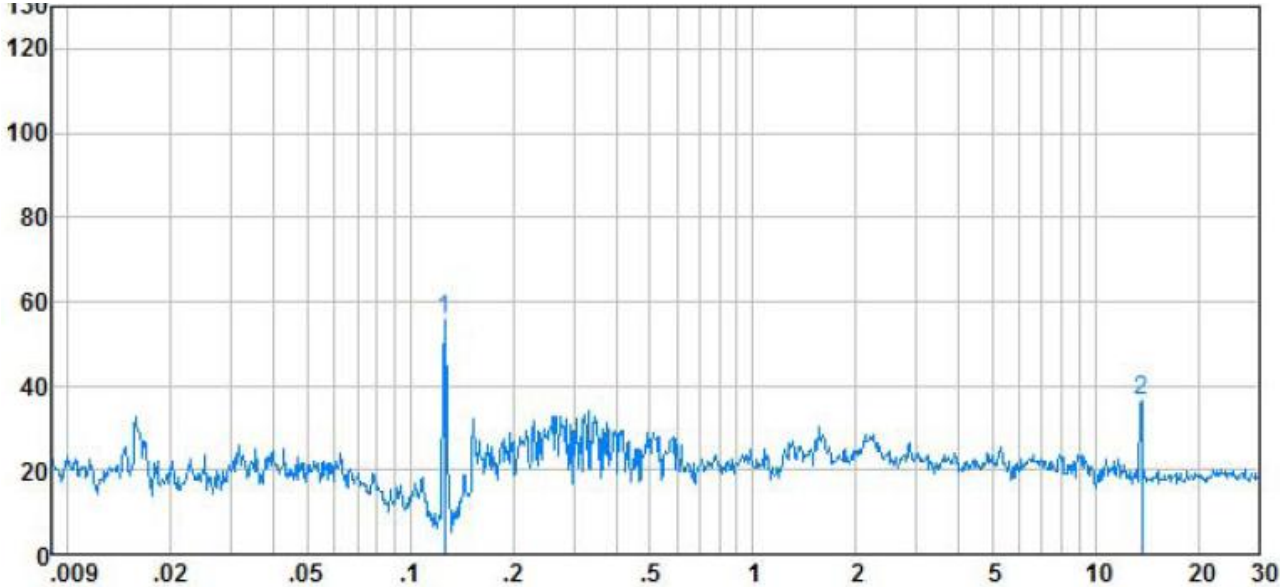
Frequency (MHz)	Polarization (H/V)	Reading (dBuV/m)	Correction Factor (dB/m)	Measure Level (dBuV/m)	Limit (dBuV/m)	Over Limit (dB)	Detector
0.13	H	35.86	19.53	55.39	84.41	-29.02	Peak
0.13	V	43.39	19.66	63.05	84.41	-21.36	Peak
0.35	H	23.33	18.14	41.47	76.56	-35.09	Peak
13.66	V	27.76	15.25	43.01	49.08	-6.07	Peak

H: Horizontal V: Vertical

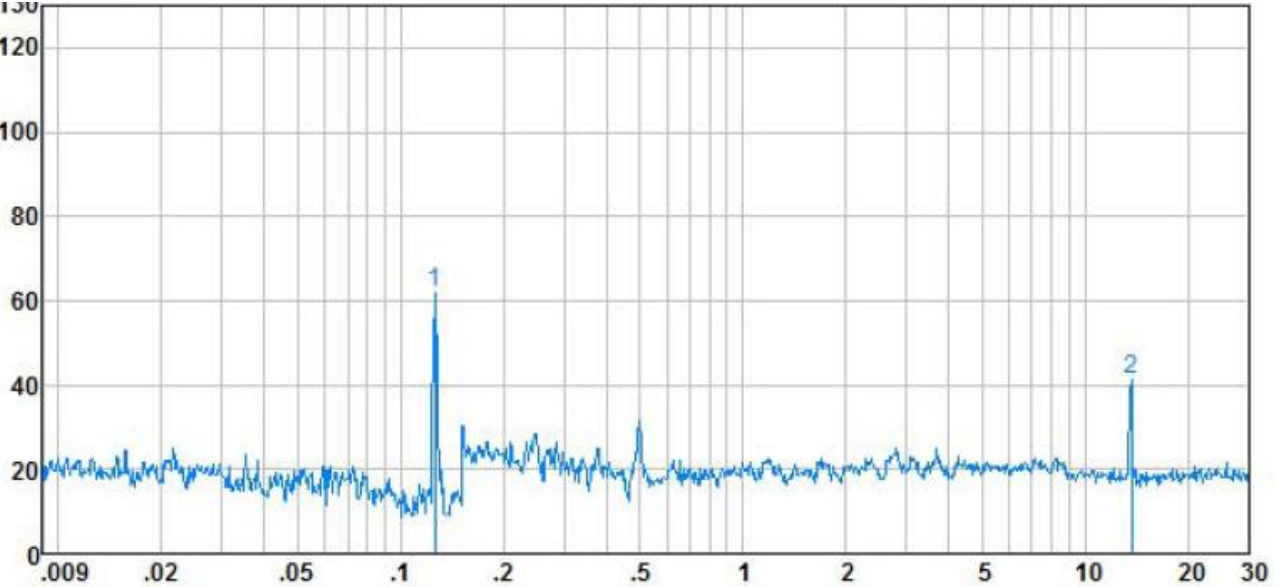
Measure Level(dBuV/m) = Reading (dBuV/m) + Correction Factor (dB/m)

802.11b, traffic mode; Channel 7

H:



V:



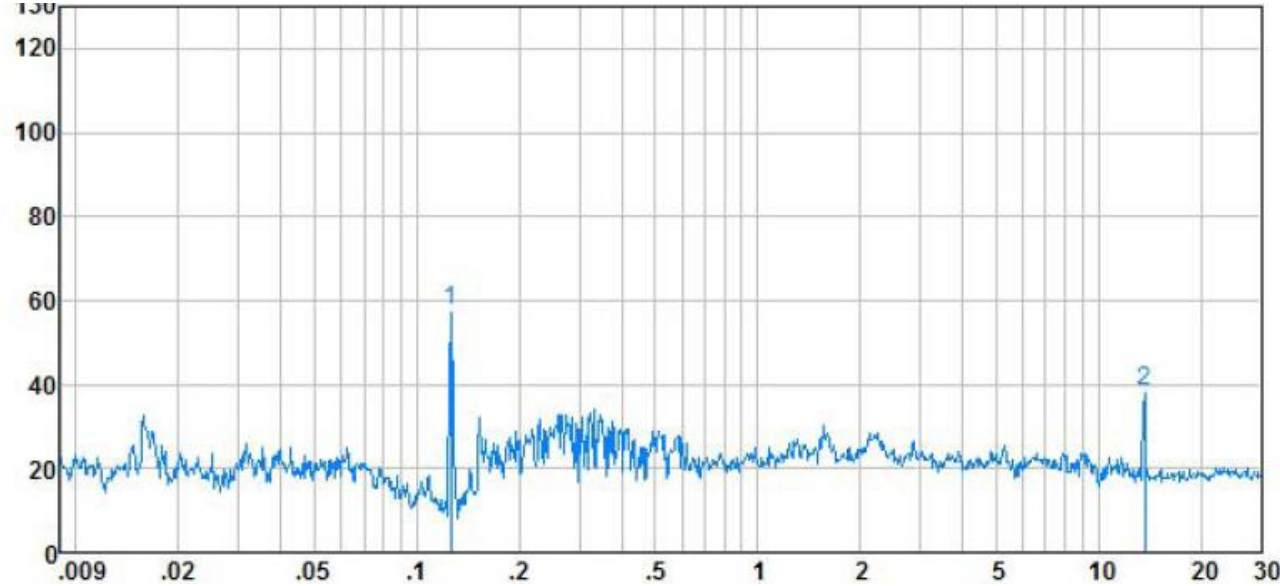
Frequency (MHz)	Polarization (H/V)	Reading (dBuV/m)	Correction Factor (dB/m)	Measure Level (dBuV/m)	Limit (dBuV/m)	Over Limit (dB)	Detector
0.13	H	36.19	19.53	55.72	84.41	-28.69	Peak
0.13	V	42.17	19.66	61.83	84.41	-22.58	Peak
13.66	H	21.98	15.28	37.26	49.08	-11.82	Peak
13.66	V	25.74	15.25	40.99	49.08	-8.09	Peak

H: Horizontal V: Vertical

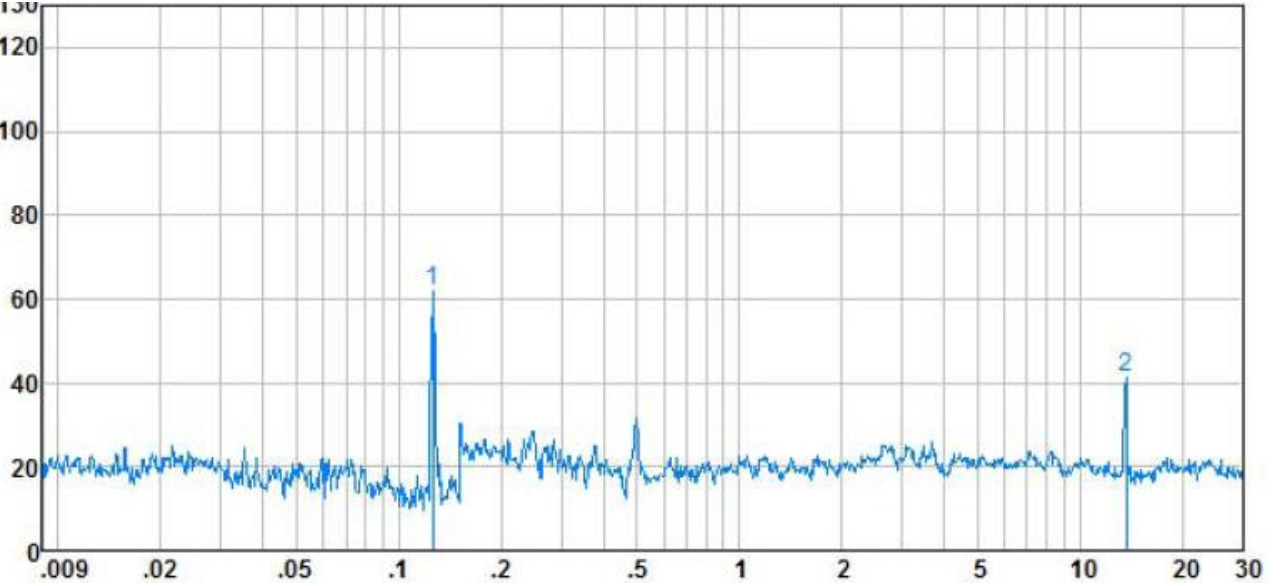
Measure Level(dBuV/m) = Reading (dBuV/m) + Correction Factor (dB/m)

802.11b, traffic mode; Channel 13

H:



V:



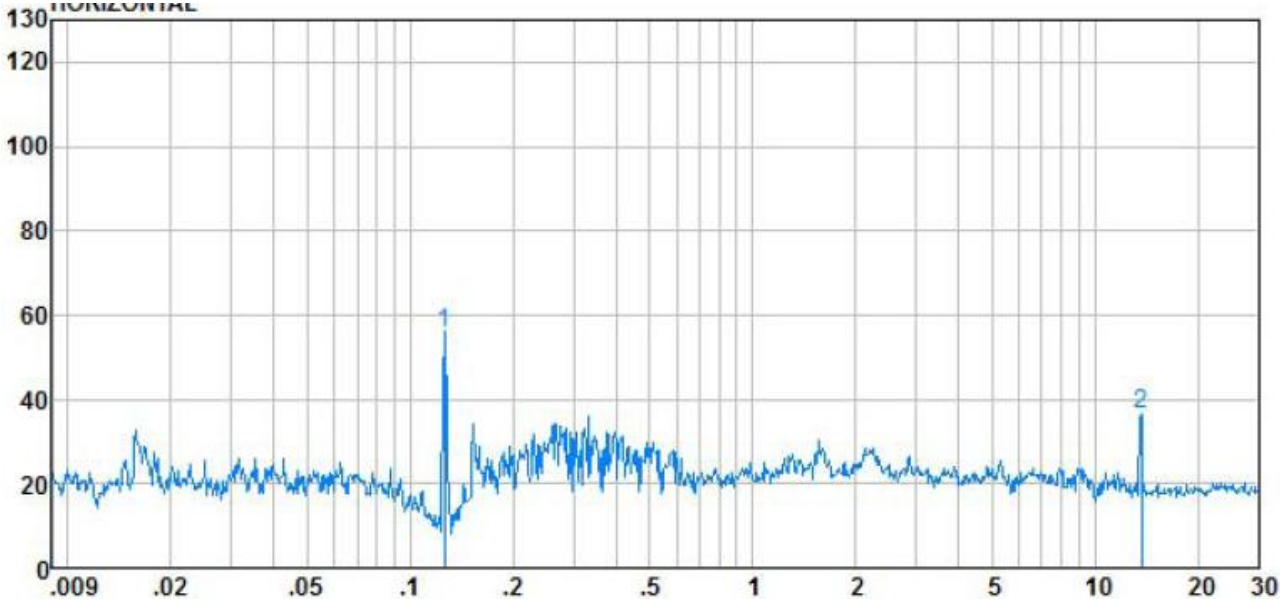
Frequency (MHz)	Polarization (H/V)	Reading (dBuV/m)	Correction Factor (dB/m)	Measure Level (dBuV/m)	Limit (dBuV/m)	Over Limit (dB)	Detector
0.13	H	42.13	19.53	61.66	84.41	-22.75	Peak
0.13	V	42.17	19.66	61.83	84.41	-22.58	Peak
13.66	H	22.83	15.28	38.11	49.08	-10.97	Peak
13.66	V	26.48	15.25	41.73	49.08	-7.35	Peak

H: Horizontal V: Vertical

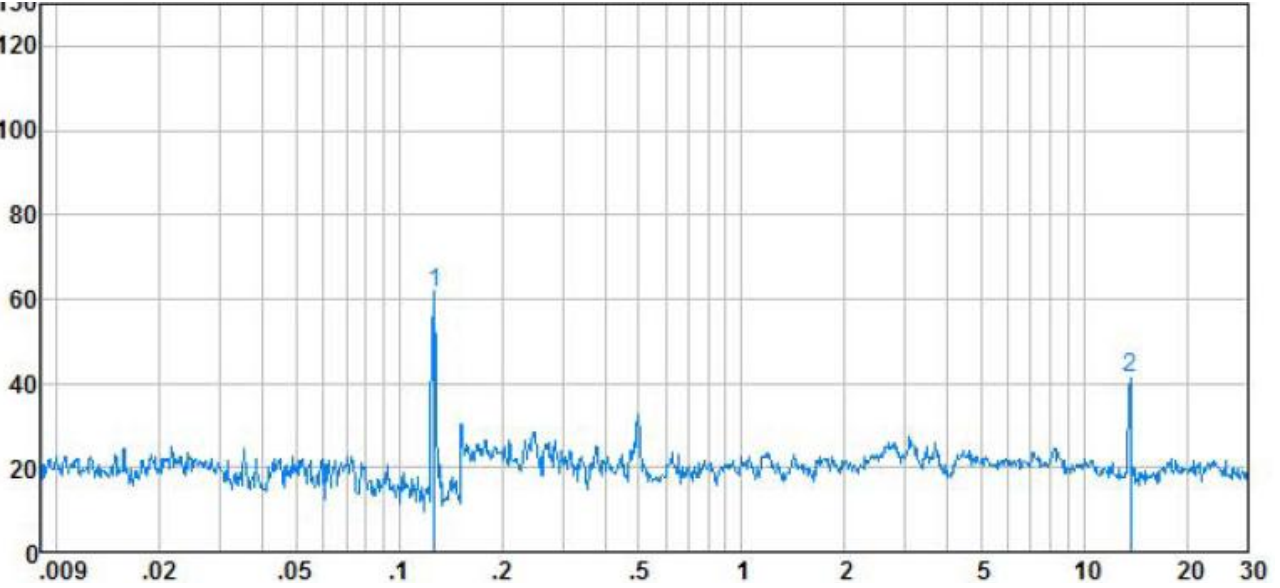
Measure Level(dBuV/m) = Reading (dBuV/m) + Correction Factor (dB/m)

802.11g, traffic mode; Channel 1

H:



V:

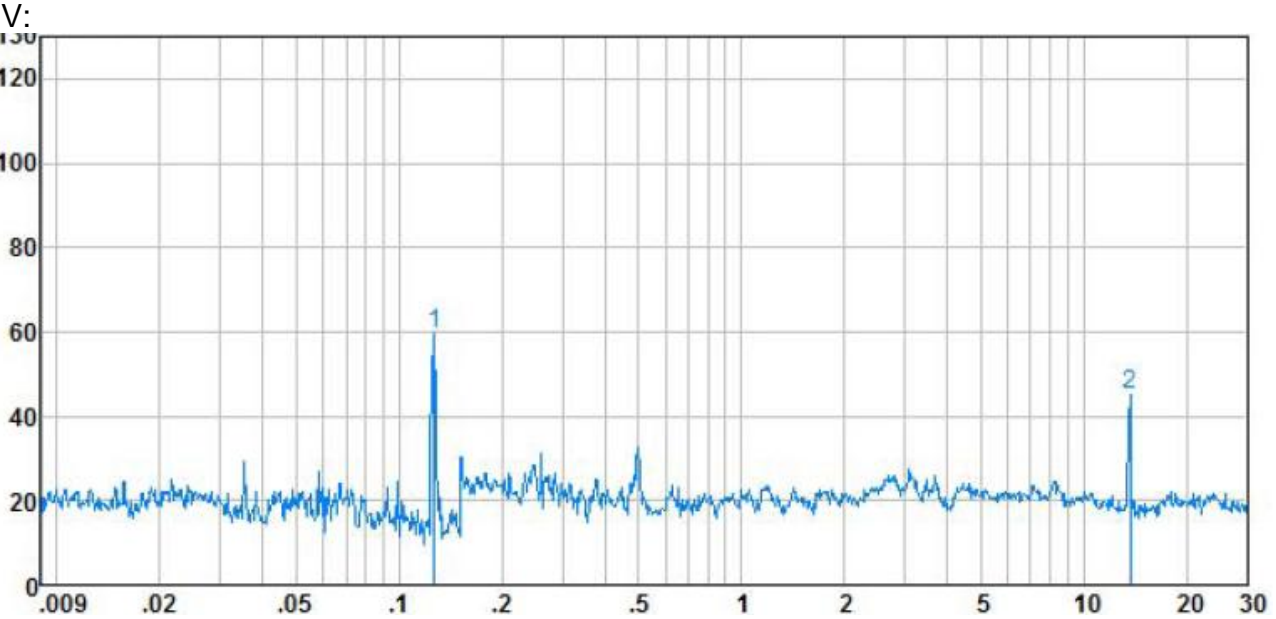
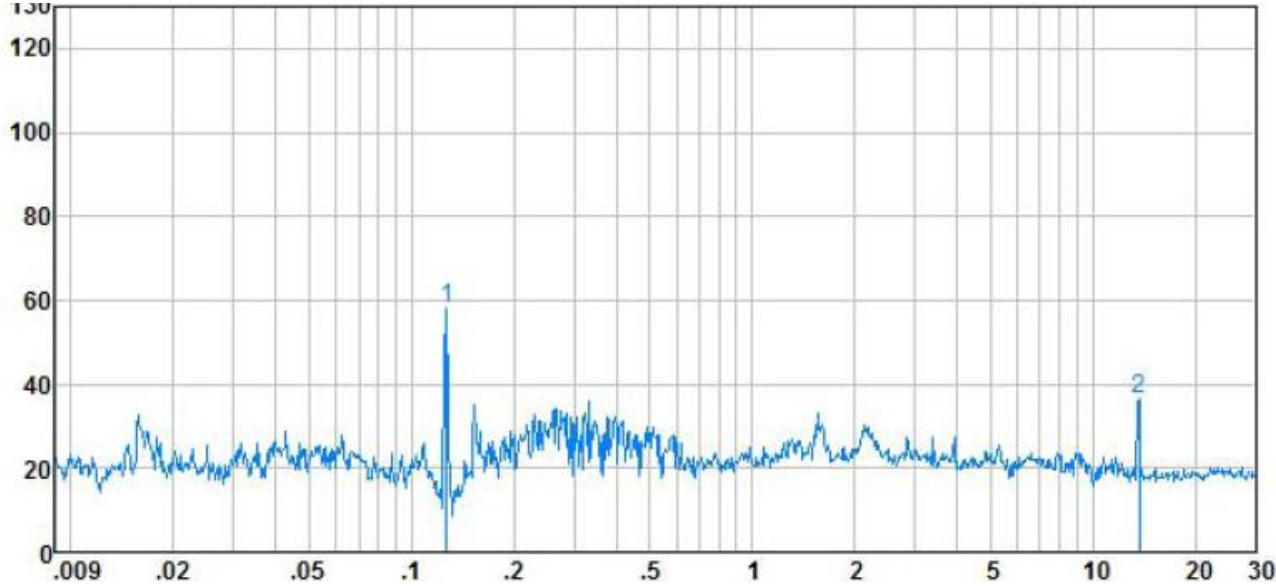


Frequency (MHz)	Polarization (H/V)	Reading (dBuV/m)	Correction Factor (dB/m)	Measure Level (dBuV/m)	Limit (dBuV/m)	Over Limit (dB)	Detector
0.13	H	35.83	19.53	55.36	84.41	-29.05	Peak
0.13	V	41.93	19.66	61.59	84.41	-22.82	Peak
13.66	H	20.96	15.28	36.24	49.08	-12.84	Peak
13.66	V	26.19	15.25	41.44	49.08	-7.64	Peak

H: Horizontal V: Vertical

Measure Level(dBuV/m) = Reading (dBuV/m) + Correction Factor (dB/m)

802.11g, traffic mode; Channel 7
H:



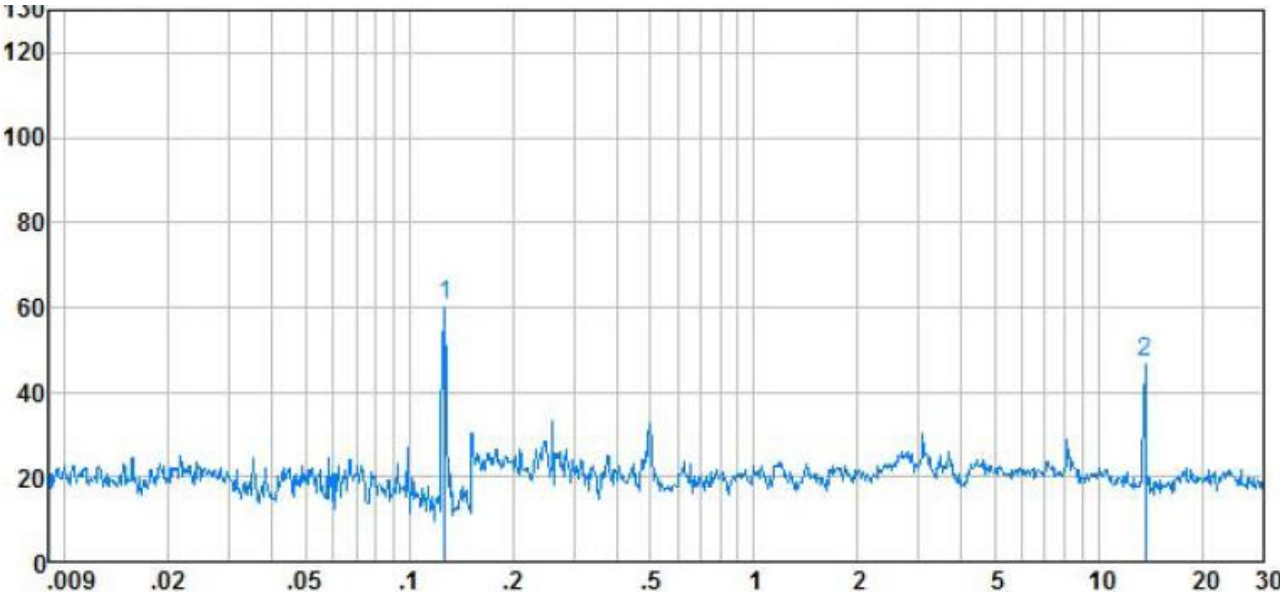
Frequency (MHz)	Polarization (H/V)	Reading (dBuV/m)	Correction Factor (dB/m)	Measure Level (dBuV/m)	Limit (dBuV/m)	Over Limit (dB)	Detector
0.13	H	38.72	19.53	58.25	84.41	-26.16	Peak
0.13	V	39.85	19.66	59.51	84.41	-24.90	Peak
13.66	H	20.98	15.28	36.26	49.08	-12.82	Peak
13.66	V	28.88	15.25	44.13	49.08	-4.95	Peak

H: Horizontal V: Vertical

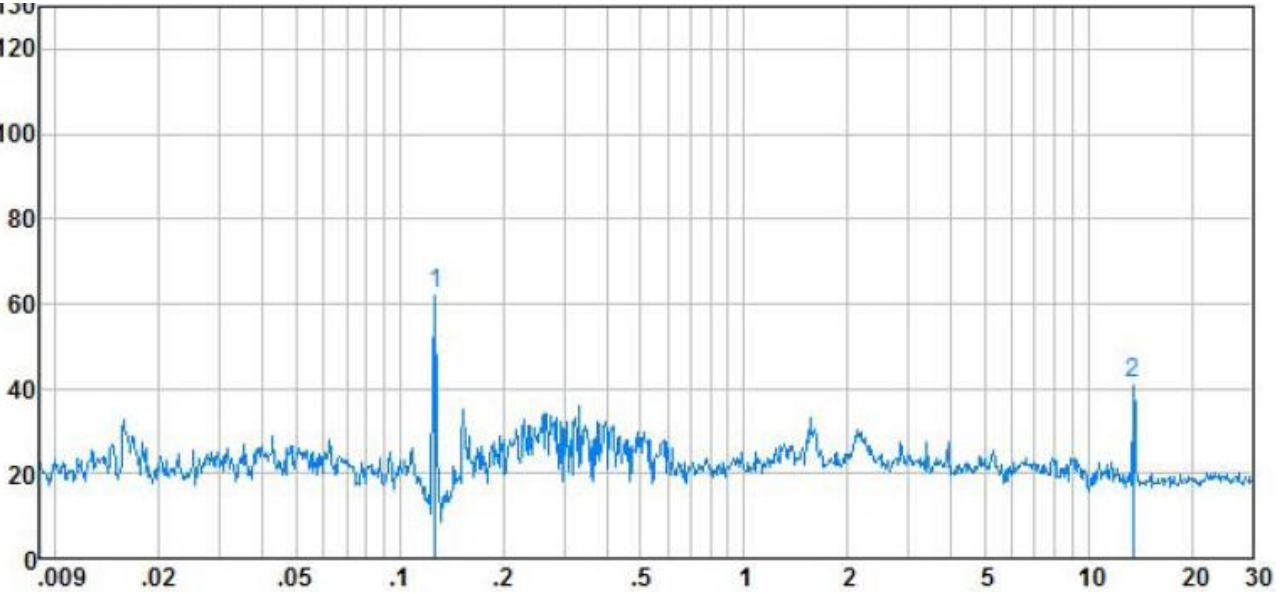
Measure Level(dBuV/m) = Reading (dBuV/m) + Correction Factor (dB/m)

802.11g, traffic mode; Channel 13

H:



V:



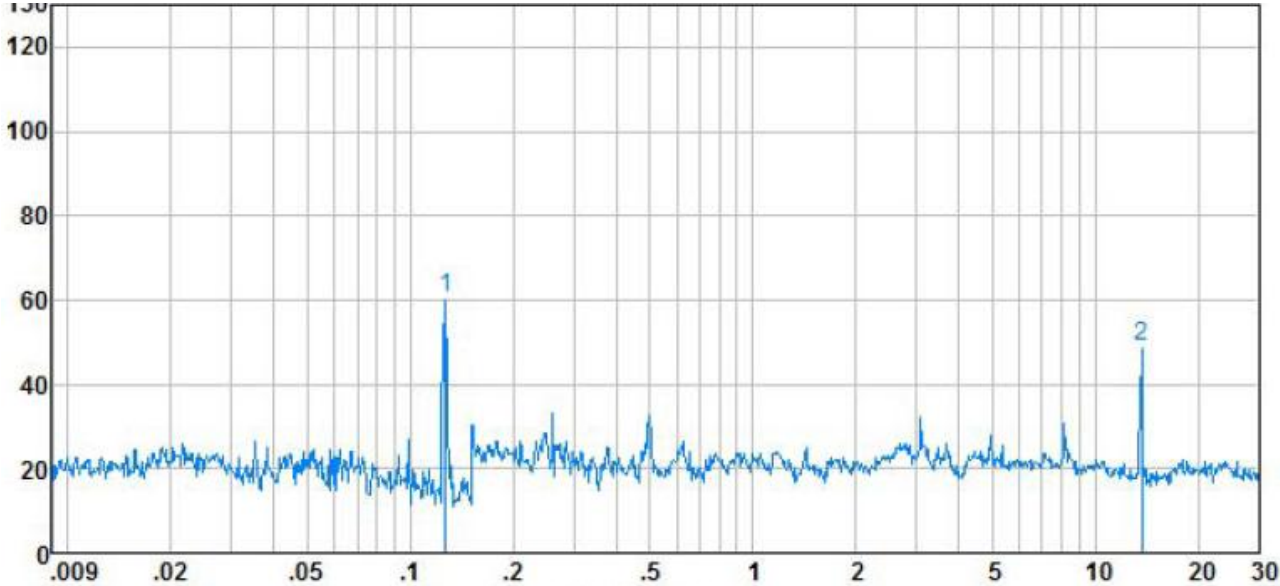
Frequency (MHz)	Polarization (H/V)	Reading (dBuV/m)	Correction Factor (dB/m)	Measure Level (dBuV/m)	Limit (dBuV/m)	Over Limit (dB)	Detector
0.13	H	40.88	19.53	60.41	84.41	-24.00	Peak
0.13	V	42.70	19.66	62.36	84.41	-22.05	Peak
13.66	H	29.95	15.28	45.23	49.08	-3.85	Peak
13.66	V	25.78	15.25	41.03	49.08	-8.05	Peak

H: Horizontal V: Vertical

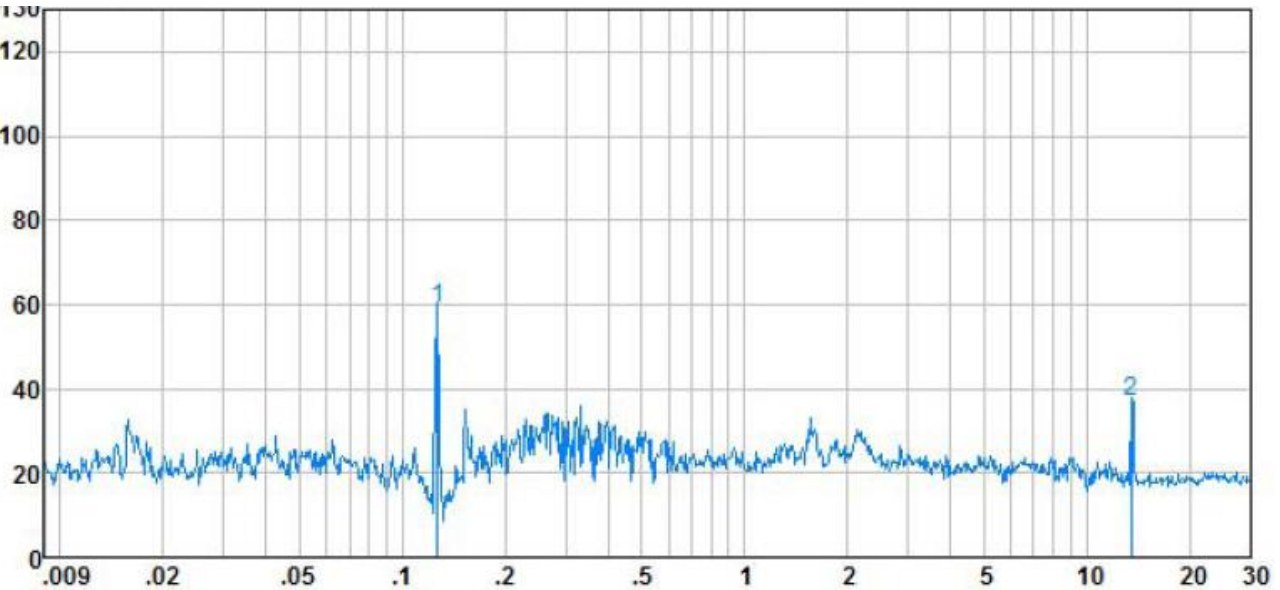
Measure Level(dBuV/m) = Reading (dBuV/m) + Correction Factor (dB/m)

802.11n, traffic mode; Channel 1

H:



V:



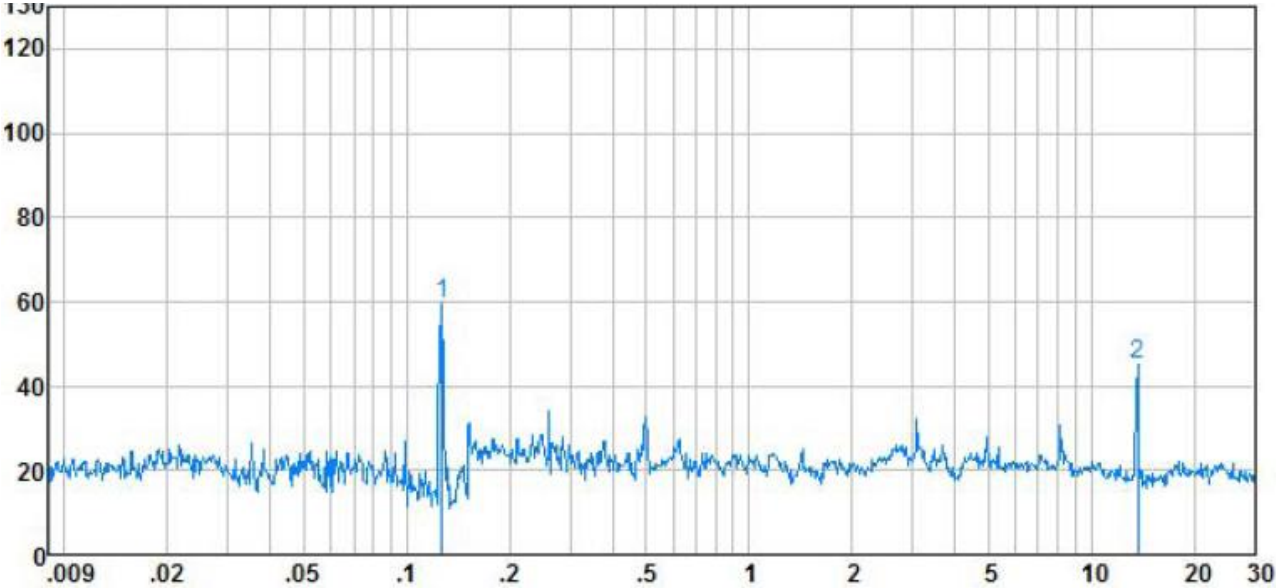
Frequency (MHz)	Polarization (H/V)	Reading (dBuV/m)	Correction Factor (dB/m)	Measure Level (dBuV/m)	Limit (dBuV/m)	Over Limit (dB)	Detector
0.13	H	41.18	19.53	60.71	84.41	-23.70	Peak
0.13	V	39.39	19.66	59.05	84.41	-25.36	Peak
13.66	H	28.85	15.28	44.13	49.08	-4.95	Peak
13.66	V	21.81	15.25	37.06	49.08	-12.02	Peak

H: Horizontal V: Vertical

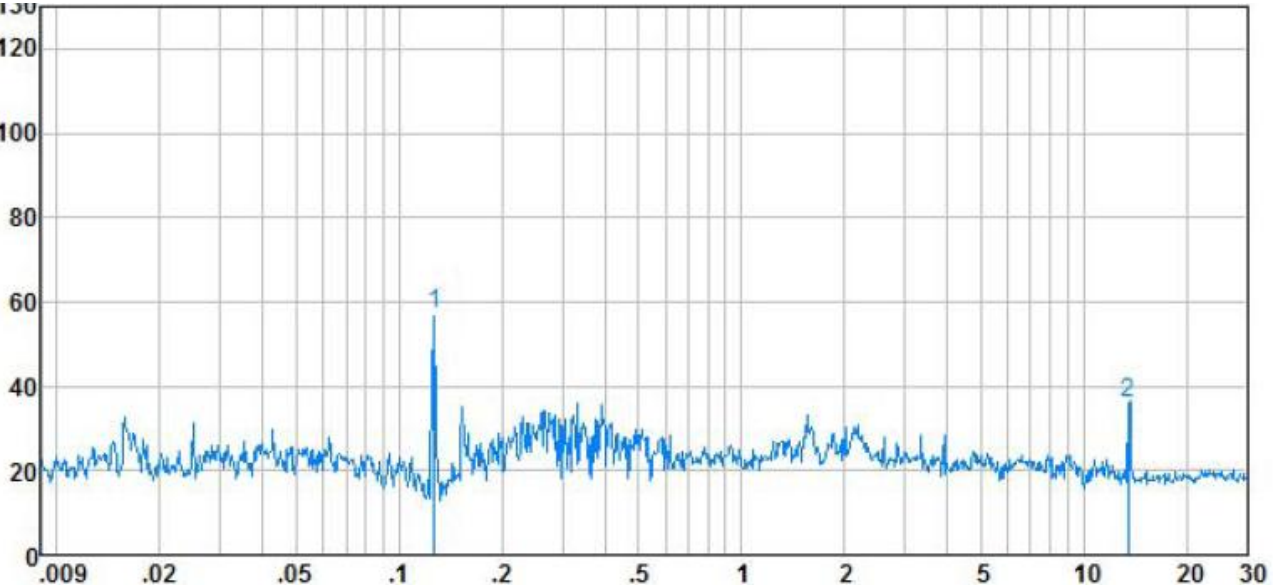
Measure Level(dBuV/m) = Reading (dBuV/m) + Correction Factor (dB/m)

802.11b, traffic mode; Channel 7

H:



V:



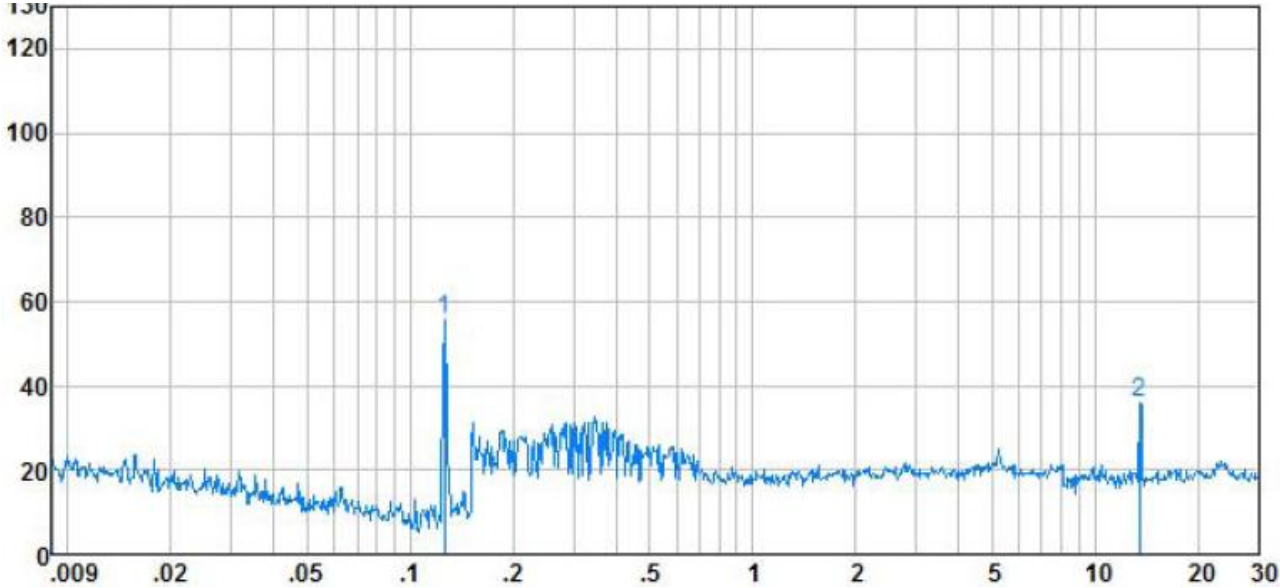
Frequency (MHz)	Polarization (H/V)	Reading (dBuV/m)	Correction Factor (dB/m)	Measure Level (dBuV/m)	Limit (dBuV/m)	Over Limit (dB)	Detector
0.13	H	39.91	19.53	59.44	84.41	-24.97	Peak
0.13	V	37.72	19.66	57.38	84.41	-27.03	Peak
13.66	H	28.90	15.28	44.18	49.08	-4.90	Peak
13.66	V	20.97	15.25	36.22	49.08	-12.86	Peak

H: Horizontal V: Vertical

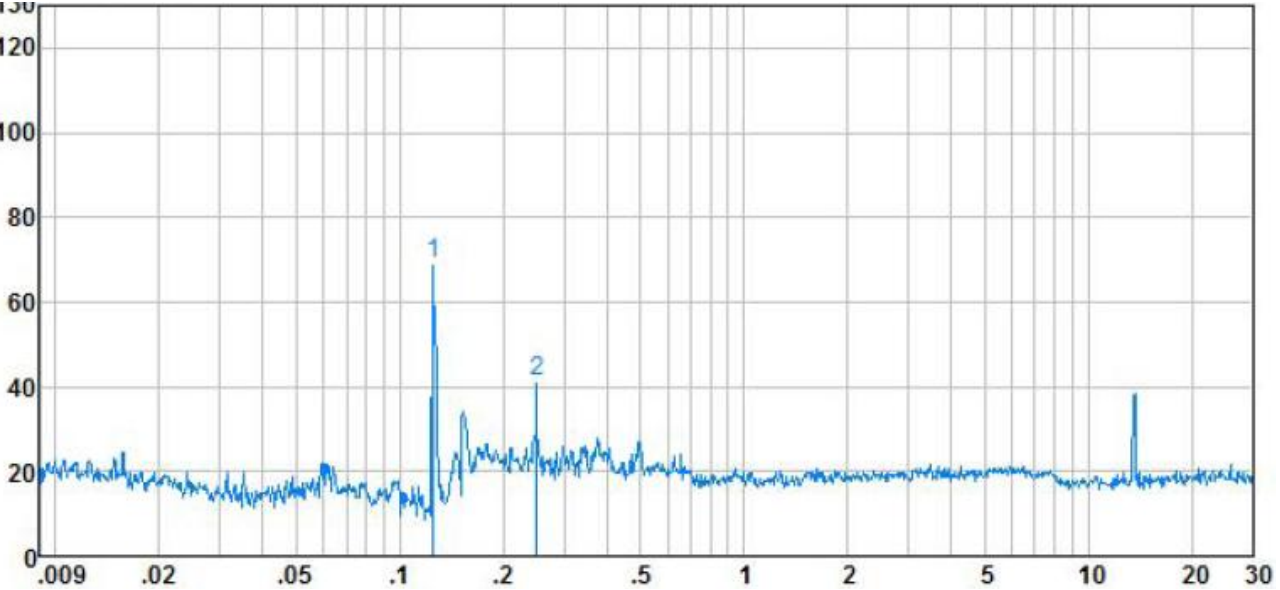
Measure Level(dBuV/m) = Reading (dBuV/m) + Correction Factor (dB/m)

802.11n, traffic mode; Channel 13

H:



V:

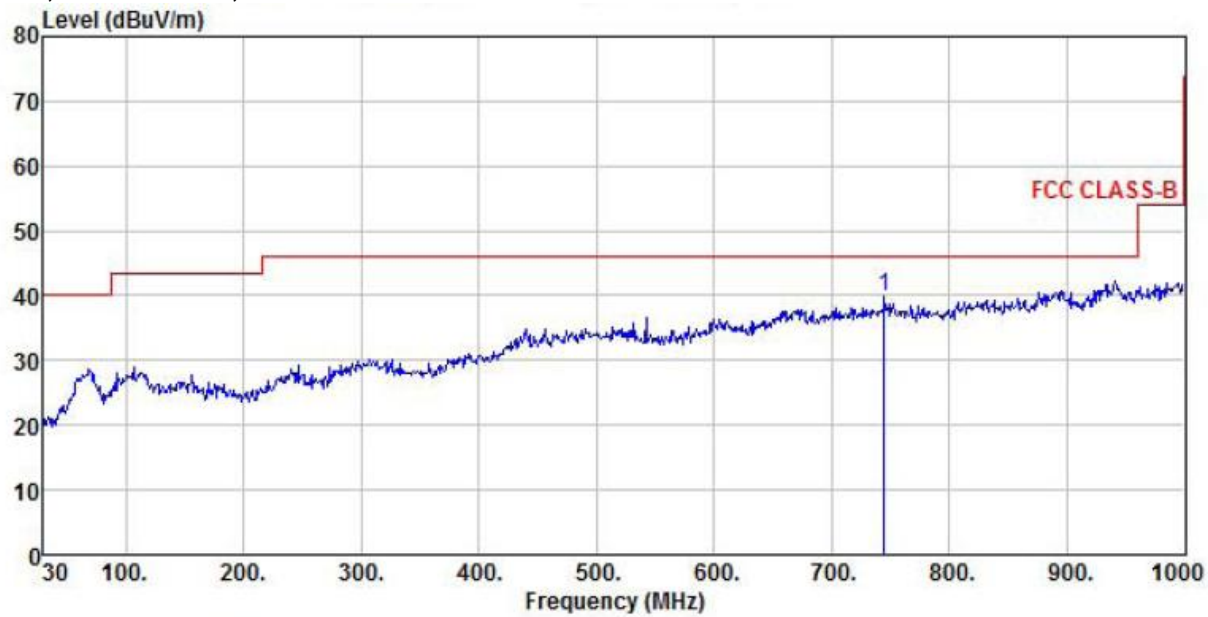


Frequency (MHz)	Polarization (H/V)	Reading (dBuV/m)	Correction Factor (dB/m)	Measure Level (dBuV/m)	Limit (dBuV/m)	Over Limit (dB)	Detector
0.13	H	36.12	19.53	55.65	84.41	-28.76	Peak
0.13	V	49.23	19.66	68.89	84.41	-15.52	Peak
13.66	H	18.14	15.28	36.28	49.08	-12.80	Peak
0.25	V	22.94	18.43	41.37	78.73	-37.36	Peak

H: Horizontal V: Vertical

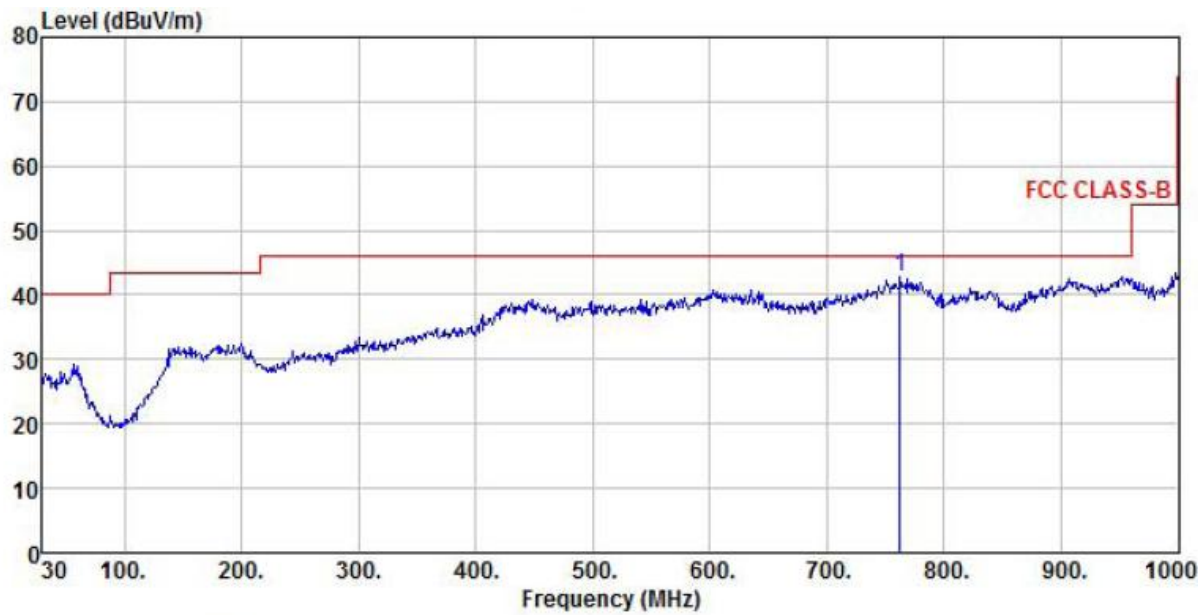
Measure Level(dBuV/m) = Reading (dBuV/m) + Correction Factor (dB/m)

From 30MHz to 1GHz:
802.11b, traffic mode; Channel 1



Site : chamber
Condition : FCC CLASS-B 3m VULB9160(RSE-V) VERTICAL
EUT : Coolpad Flo
Model Name : Coolpad 7560T
Temp/Humi : 23 °C / 55%
Power Rating: DC 3.7V
Mode : wifi ch1 11b
Memo :

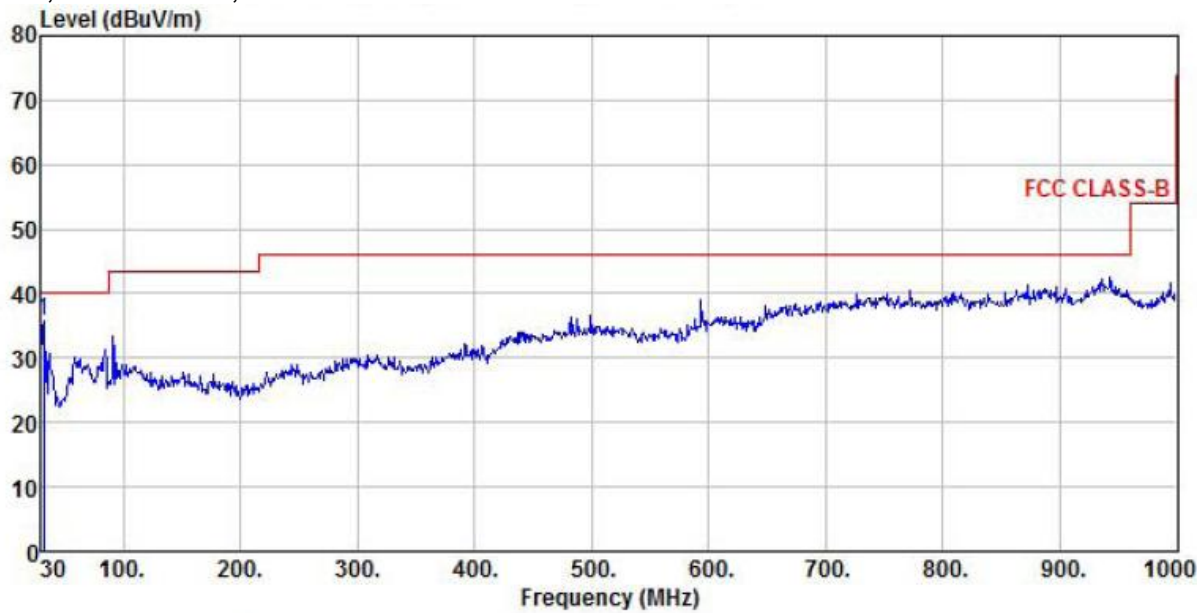
Freq	ReadAntenna		Cable Preamp		Level	Limit	Over	Remark
	Level	Factor	Loss	Factor		Line	Limit	
MHz	dBuV	dB/m	dB	dB	dBuV/m	dBuV/m	dB	
1 pp 744.89	3.21	32.99	3.78	0.00	39.98	46.00	-6.02	Peak



Site : chamber
Condition : FCC CLASS-B 3m VULB9160(RSE-H) HORIZONTAL
EUT : Coolpad Flo
Model Name : Coolpad 7560T
Temp/Humi : 23 °C / 55%
Power Rating: DC 3.7V
Mode : wifi ch1 11b
Memo :

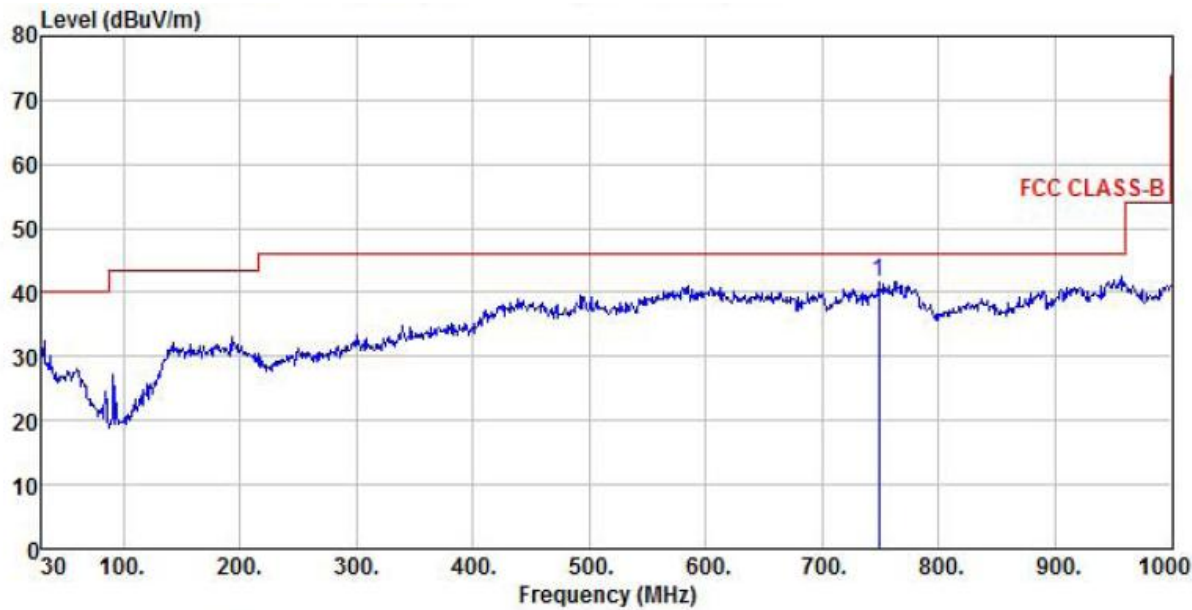
Freq	ReadAntenna		Cable Preamp		Level	Limit	Over	Remark
	Level	Factor	Loss	Factor		Line	Limit	
MHz	dBuV	dB/m	dB	dB	dBuV/m	dBuV/m	dB	
1 pp 762.35	-1.32	40.34	3.70	0.00	42.72	46.00	-3.28	Peak

802.11b, traffic mode; Channel 7



Site : chamber
Condition : FCC CLASS-B 3m VULB9160(RSE-V) VERTICAL
EUT : Coolpad Flo
Model Name : Coolpad 7560T
Temp/Humi : 23 °C / 55%
Power Rating: DC 3.7V
Mode : wifi ch7 11b
Memo :

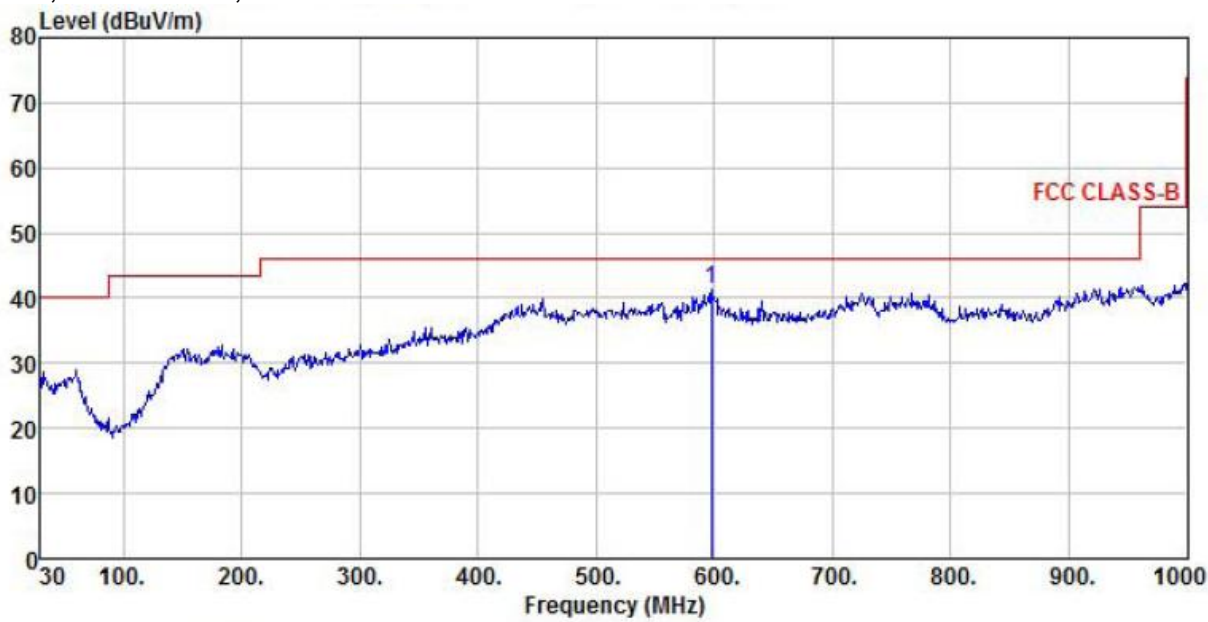
	Freq	ReadAntenna		Cable Preamp		Level	Limit	Over	Remark
		Level	Factor	Loss	Factor				
	MHz	dBuV	dB/m	dB	dB	dBuV/m	dBuV/m	dB	
1 pp	31.94	17.04	18.01	0.70	0.00	35.75	40.00	-4.25	Peak



Site : chamber
Condition : FCC CLASS-B 3m VULB9160(RSE-H) HORIZONTAL
EUT : Coolpad Flo
Model Name : Coolpad 7560T
Temp/Humi : 23 °C / 55%
Power Rating: DC 3.7V
Mode : wifi ch7 11b
Memo :

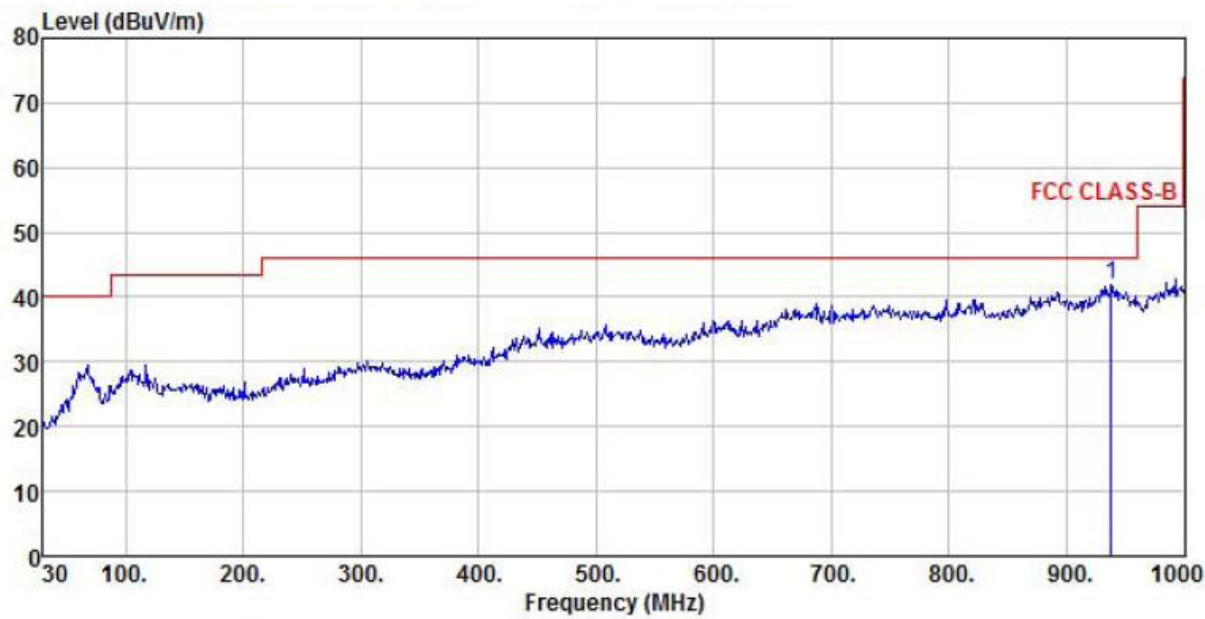
Freq	ReadAntenna		Cable Preamp		Level	Limit	Over	Remark
	Level	Factor	Loss	Factor				
MHz	dBuV	dB/m	dB	dB	dBuV/m	dBuV/m	dB	
1 pp 748.77	-2.23	40.09	3.80	0.00	41.66	46.00	-4.34	Peak

802.11b, traffic mode; Channel 13



Site : chamber
Condition : FCC CLASS-B 3m VULB9160(RSE-H) HORIZONTAL
EUT : Coolpad Flo
Model Name : Coolpad 7560T
Temp/Humi : 23 °C / 55%
Power Rating: DC 3.7V
Mode : wifi ch13 11b
Memo :

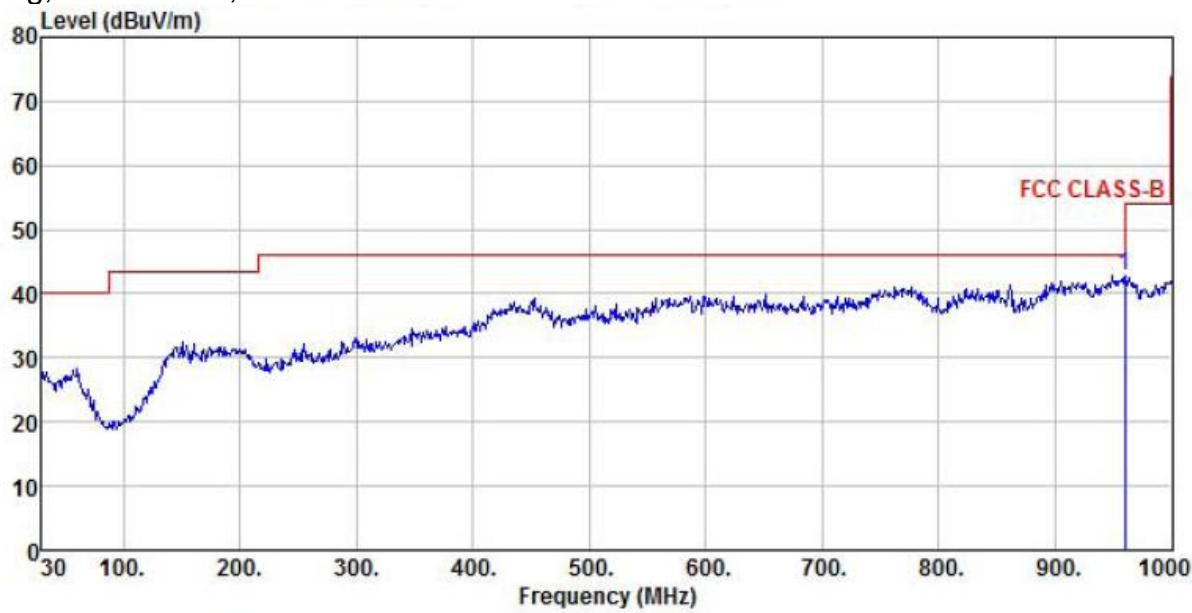
		ReadAntenna	Cable	Preamp		Limit	Over	
	Freq	Level	Factor	Loss	Factor	Level	Line	Limit Remark
	MHz	dBuV	dB/m	dB	dB	dBuV/m	dBuV/m	dB
1 pp	597.45	1.50	36.37	3.34	0.00	41.21	46.00	-4.79 Peak



Site : chamber
Condition : FCC CLASS-B 3m VULB9160(RSE-V) VERTICAL
EUT : Coolpad Flo
Model Name : Coolpad 7560T
Temp/Humi : 23 °C / 55%
Power Rating: DC 3.7V
Mode : wifi ch13 11b
Memo :

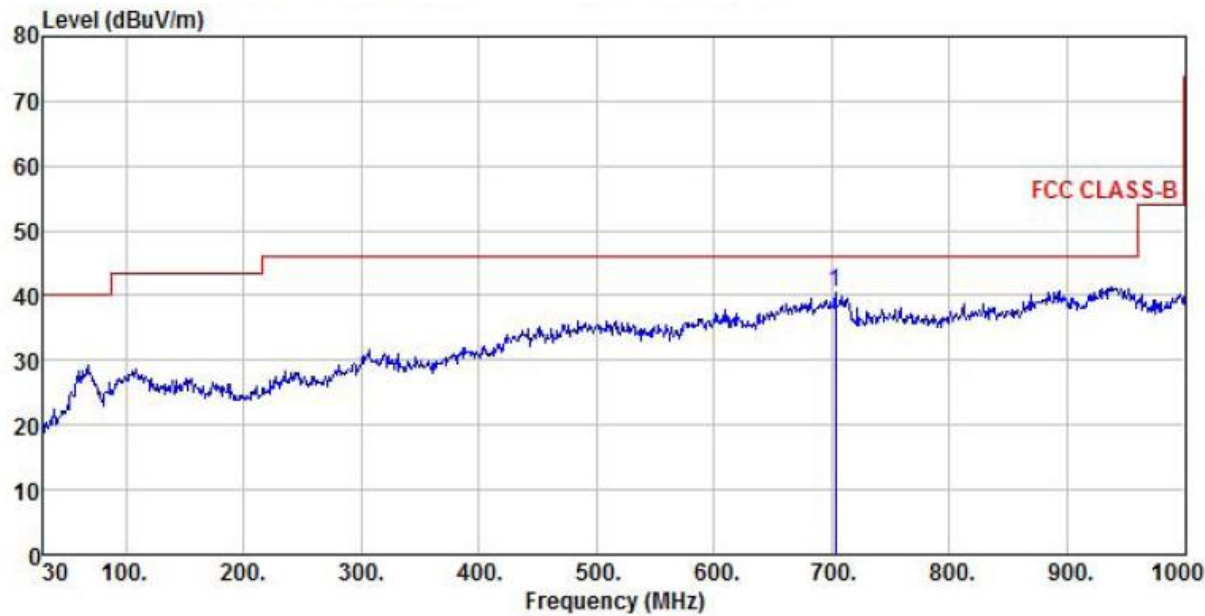
Freq	ReadAntenna		Cable Preamp		Limit	Over	Remark
	Level	Factor	Loss	Factor			
MHz	dBuV	dB/m	dB	dB	dBuV/m	dBuV/m	dB
1 pp 937.92	1.31	36.38	4.13	0.00	41.82	46.00	-4.18 Peak

802.11g, traffic mode; Channel 1



Site : chamber
Condition : FCC CLASS-B 3m VULB9160(RSE-H) HORIZONTAL
EUT : Coolpad Flo
Model Name : Coolpad 7560T
Temp/Humi : 23 °C / 55%
Power Rating: DC 3.7V
Mode : wifi ch1 11g
Memo :

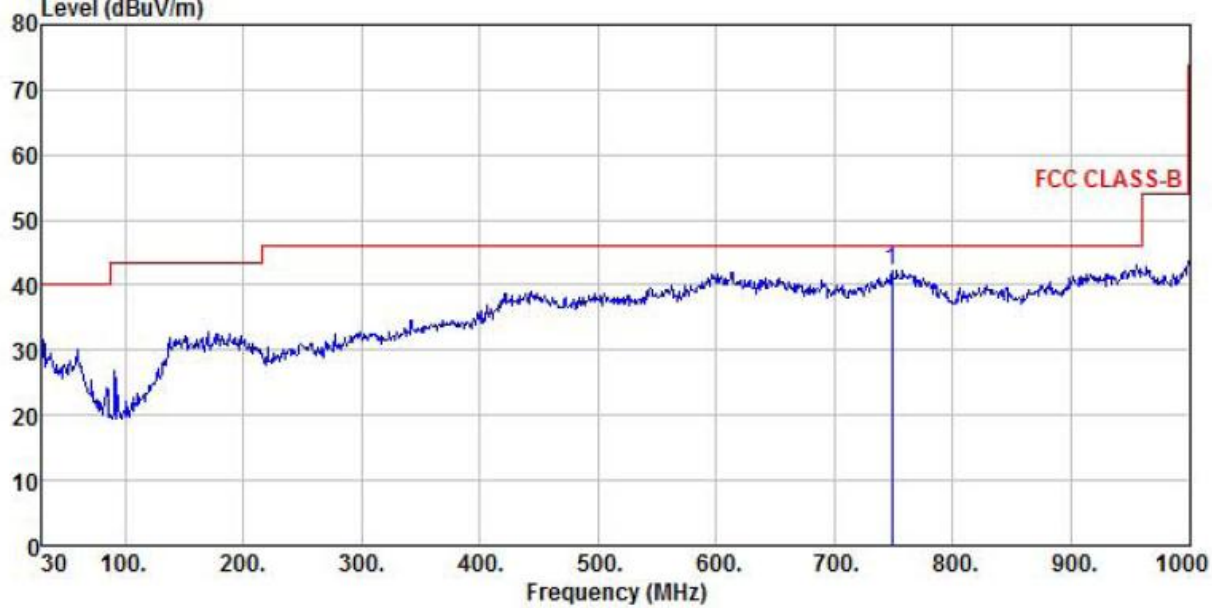
Freq	ReadAntenna		Cable		Preamp		Limit	Over	Remark
	Level	Factor	Loss	Factor	Level	Line	Limit	Limit	
MHz	dBuV	dB/m	dB	dB	dBuV/m	dBuV/m	dB		
1 pp 960.23	-4.71	43.29	4.20	0.00	42.78	54.00	-11.22	Peak	



Site : chamber
Condition : FCC CLASS-B 3m VULB9160(RSE-V) VERTICAL
EUT : Coolpad Flo
Model Name : Coolpad 7560T
Temp/Humi : 23 °C / 55%
Power Rating: DC 3.7V
Mode : wifi ch1 11g
Memo :

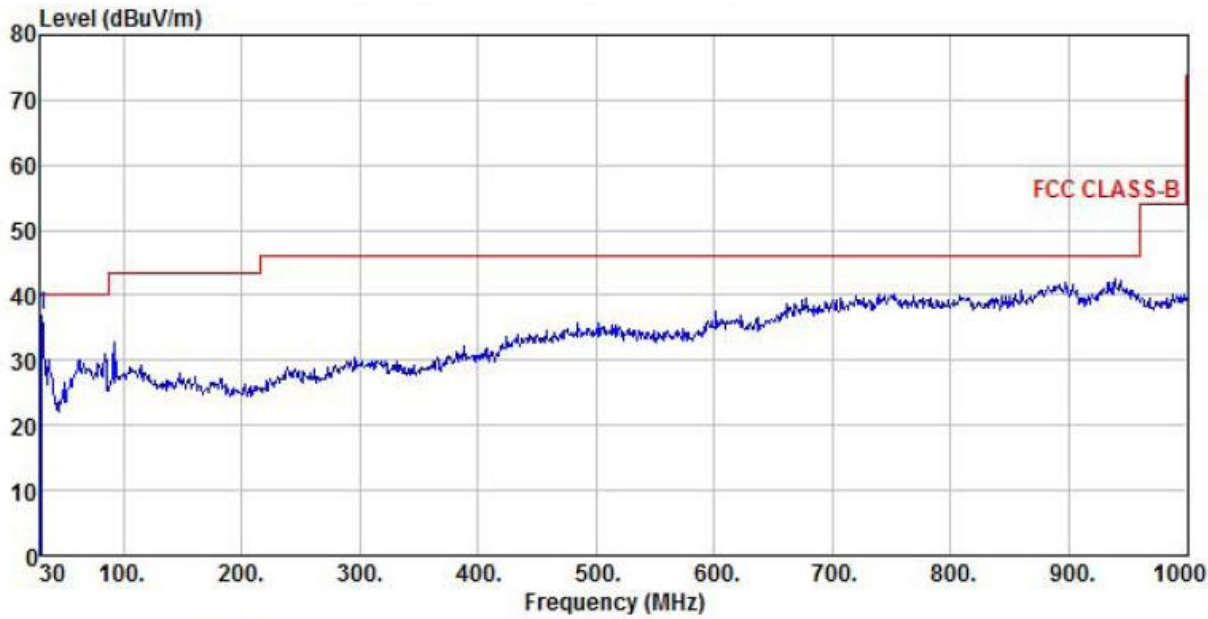
Freq	ReadAntenna		Cable Preamp		Level	Limit	Over	Remark
	Level	Factor	Loss	Factor				
MHz	dBuV	dB/m	dB	dB	dBuV/m	dBuV/m	dB	
1 pp 703.18	4.40	32.38	3.65	0.00	40.43	46.00	-5.57	Peak

802.11g, traffic mode; Channel 7



Site : chamber
Condition : FCC CLASS-B 3m VULB9160(RSE-H) HORIZONTAL
EUT : Coolpad Flo
Model Name : Coolpad 7560T
Temp/Humi : 23 °C / 55%
Power Rating: DC 3.7V
Mode : wifi ch7 11g
Memo :

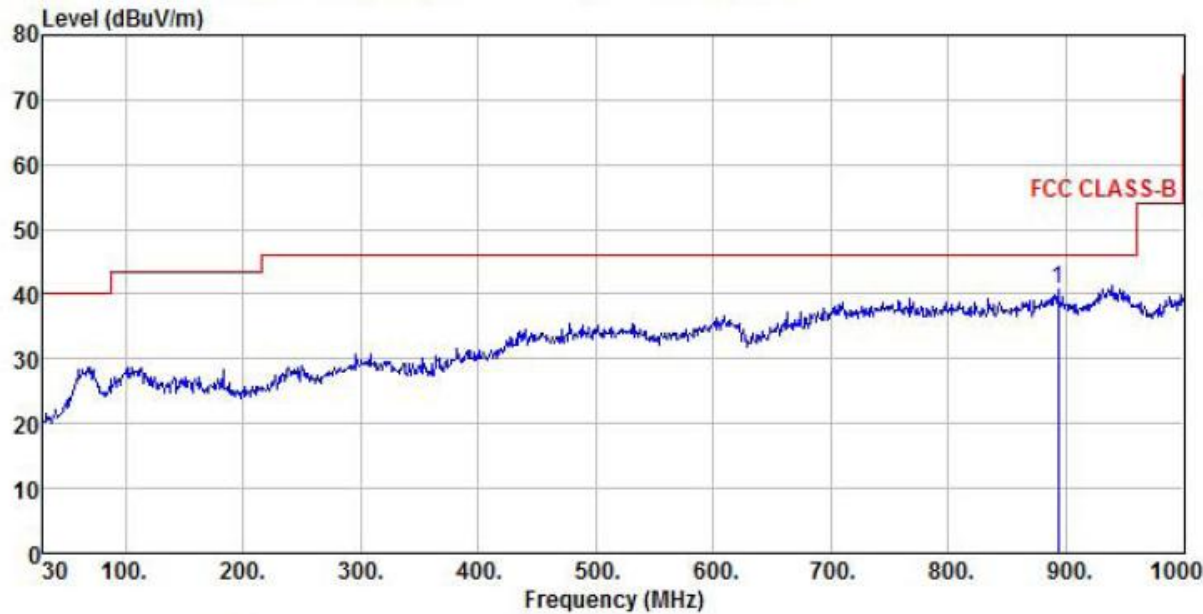
Freq	ReadAntenna		Cable Preamp		Level	Limit	Over	Remark
	Level	Factor	Loss	Factor		Line	Limit	
MHz	dBuV	dB/m	dB	dB	dBuV/m	dBuV/m	dB	
1 pp 748.77	-1.59	40.09	3.80	0.00	42.30	46.00	-3.70	Peak



Site : chamber
Condition : FCC CLASS-B 3m VULB9160(RSE-V) VERTICAL
EUT : Coolpad Flo
Model Name : Coolpad 7560T
Temp/Humi : 23 °C / 55%
Power Rating: DC 3.7V
Mode : wifi ch7 11g
Memo :

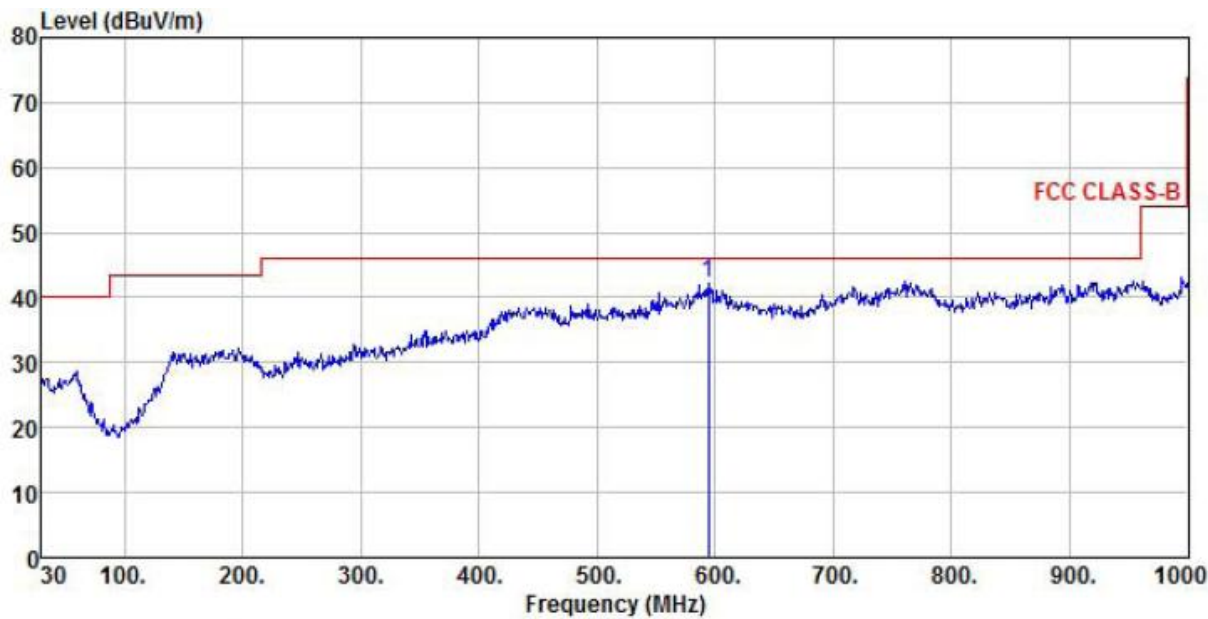
Freq	ReadAntenna		Cable Preamp		Level	Limit	Over	Remark
	Level	Factor	Loss	Factor				
MHz	dBuV	dB/m	dB	dB	dBuV/m	dBuV/m	dB	
1 pp 30.97	18.29	17.82	0.68	0.00	36.79	40.00	-3.21	Peak

802.11g, traffic mode; Channel 13



Site : chamber
Condition : FCC CLASS-B 3m VULB9160(RSE-V) VERTICAL
EUT : Coolpad Flo
Model Name : Coolpad 7560T
Temp/Humi : 23 °C / 55%
Power Rating: DC 3.7V
Mode : wifi ch13 11g
Memo :

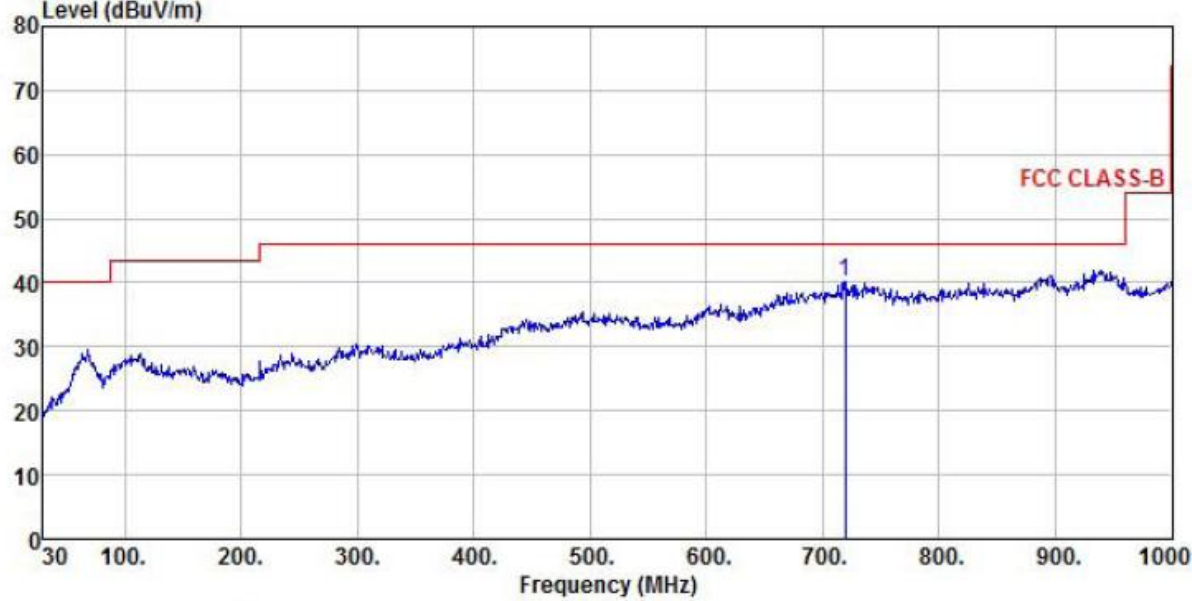
Freq	ReadAntenna		Cable Preamp		Level	Limit	Over	Remark
	Level	Factor	Loss	Factor		Line	Limit	
MHz	dBuV	dB/m	dB	dB	dBuV/m	dBuV/m	dB	
1 pp 893.30	1.16	35.44	4.03	0.00	40.63	46.00	-5.37	Peak



Site : chamber
Condition : FCC CLASS-B 3m VULB9160(RSE-H) HORIZONTAL
EUT : Coolpad Flo
Model Name : Coolpad 7560T
Temp/Humi : 23 °C / 55%
Power Rating: DC 3.7V
Mode : wifi ch13 11g
Memo :

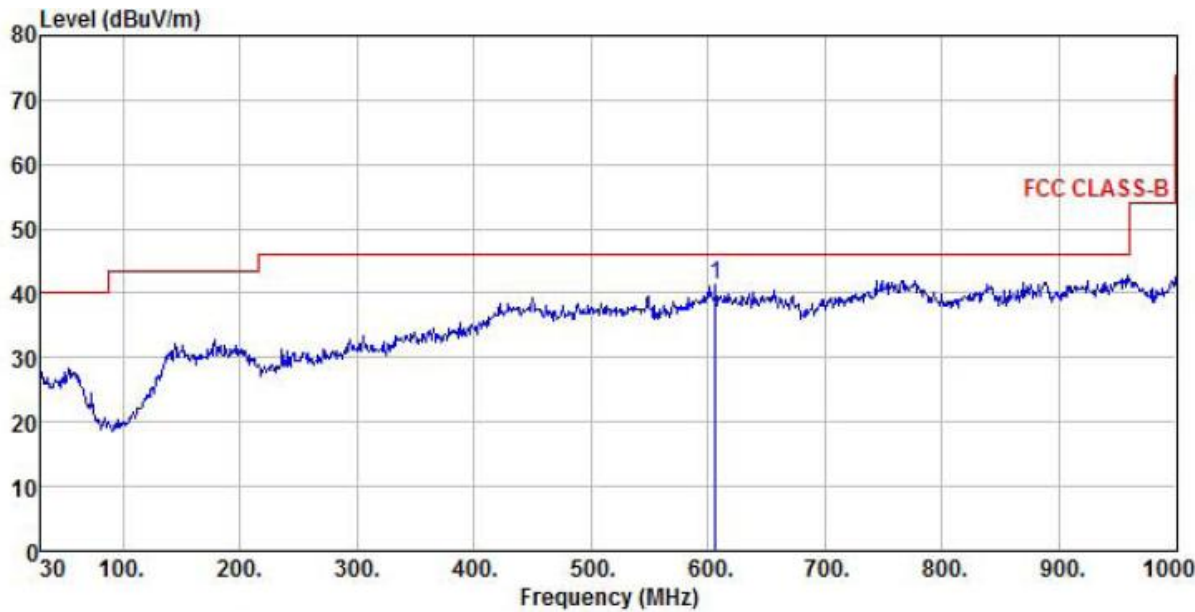
Freq	ReadAntenna		Cable Preamp		Level	Limit	Over	Remark
	Level	Factor	Loss	Factor				
MHz	dBuV	dB/m	dB	dB	dBuV/m	dBuV/m	dB	
1 pp 594.54	2.63	36.12	3.33	0.00	42.08	46.00	-3.92	Peak

802.11n, traffic mode; Channel 1



Site : chamber
Condition : FCC CLASS-B 3m VULB9160(RSE-V) VERTICAL
EUT : Coolpad Flo
Model Name : Coolpad 7560T
Temp/Humi : 23 °C / 55%
Power Rating: DC 3.7V
Mode : wifi ch1 11n
Memo :

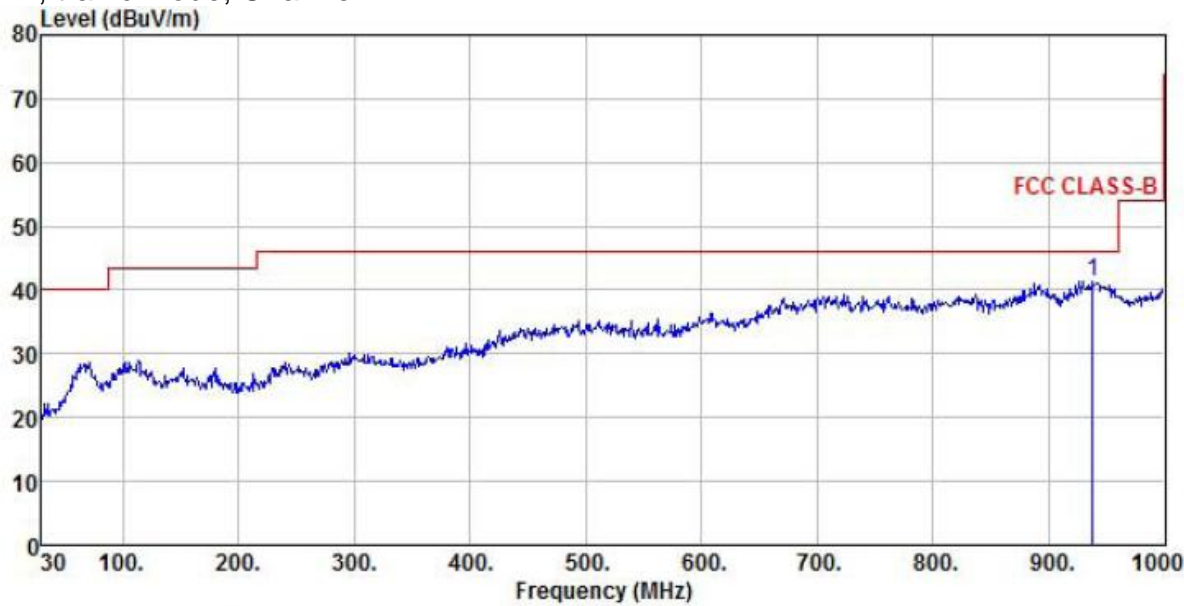
	Freq	ReadAntenna Level	Antenna Factor	Cable Loss	Preamp Factor	Level	Limit Line	Over Limit	Remark
	MHz	dBuV	dB/m	dB	dB	dBuV/m	dBuV/m	dB	
1 pp	719.67	3.98	32.51	3.70	0.00	40.19	46.00	-5.81	Peak



Site : chamber
Condition : FCC CLASS-B 3m VULB9160(RSE-H) HORIZONTAL
EUT : Coolpad Flo
Model Name : Coolpad 7560T
Temp/Humi : 23 °C / 55%
Power Rating: DC 3.7V
Mode : wifi ch1 11n
Memo :

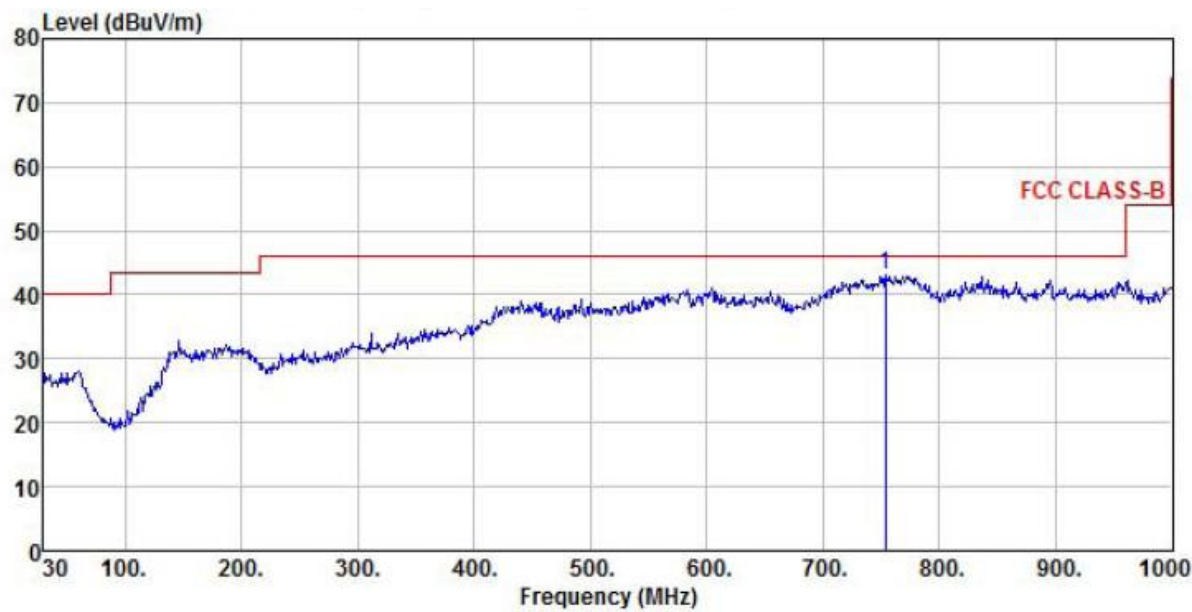
Freq	ReadAntenna		Cable Preamp		Level	Limit		Over	Remark
	Level	Factor	Loss	Factor		Line	Limit		
MHz	dBuV	dB/m	dB	dB	dBuV/m	dBuV/m	dB		
1 pp 606.18	1.36	36.49	3.35	0.00	41.20	46.00	-4.80	Peak	

802.11n, traffic mode; Channel 7



Site : chamber
Condition : FCC CLASS-B 3m VULB9160(RSE-V) VERTICAL
EUT : Coolpad Flo
Model Name : Coolpad 7560T
Temp/Humi : 23 °C / 55%
Power Rating: DC 3.7V
Mode : wifi ch7 11n
Memo :

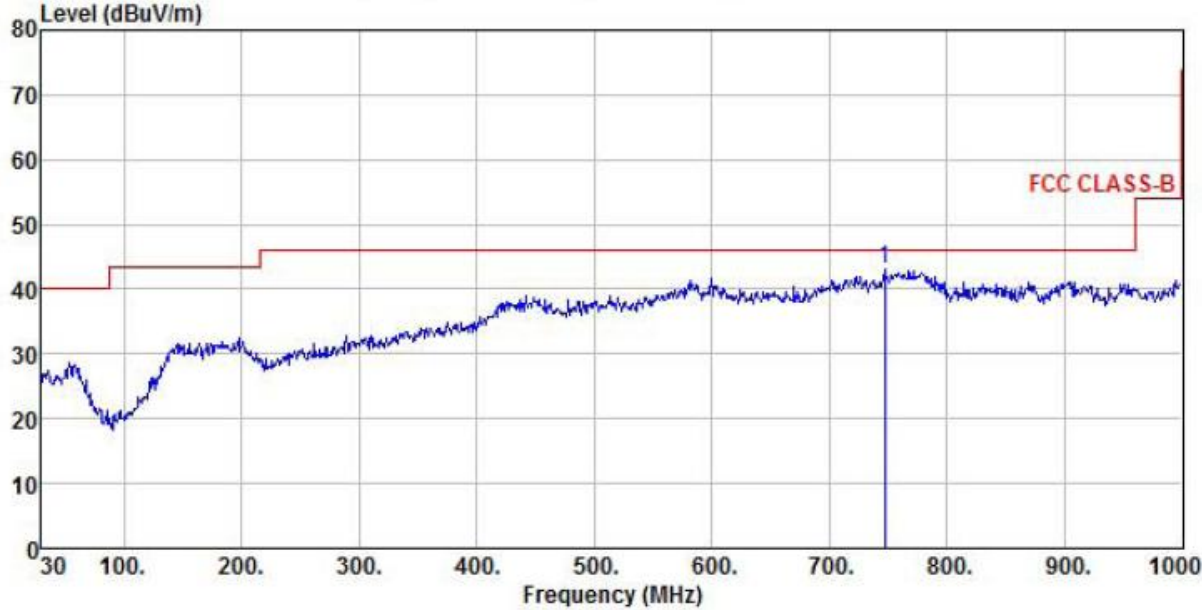
	Freq	Read Level	Antenna Factor	Cable Loss	Preamp Factor	Level	Limit Line	Over Limit	Remark
	MHz	dBuV	dB/m	dB	dB	dBuV/m	dBuV/m	dB	
1 pp	937.92	0.86	36.38	4.13	0.00	41.37	46.00	-4.63	Peak



Site : chamber
Condition : FCC CLASS-B 3m VULB9160(RSE-H) HORIZONTAL
EUT : Coolpad Flo
Model Name : Coolpad 7560T
Temp/Humi : 23 °C / 55%
Power Rating: DC 3.7V
Mode : wifi ch7 11n
Memo :

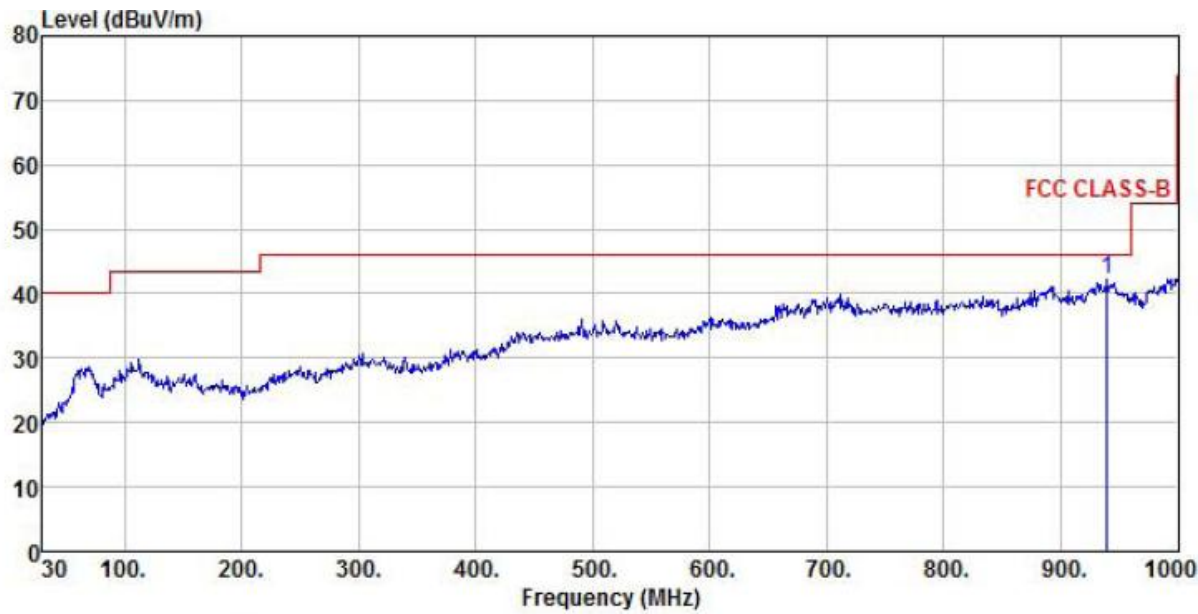
1 pp	Freq	ReadAntenna		Cable Preamp		Level	Limit	Over	Remark
		Level	Factor	Loss	Factor				
	MHz	dBuV	dB/m	dB	dB	dBuV/m	dBuV/m	dB	
	753.62	-1.03	40.23	3.77	0.00	42.97	46.00	-3.03	Peak

802.11n, traffic mode; Channel 13



Site : chamber
Condition : FCC CLASS-B 3m VULB9160(RSE-H) HORIZONTAL
EUT : Coolpad Flo
Model Name : Coolpad 7560T
Temp/Humi : 23 °C / 55%
Power Rating: DC 3.7V
Mode : wifi ch13 11n
Memo :

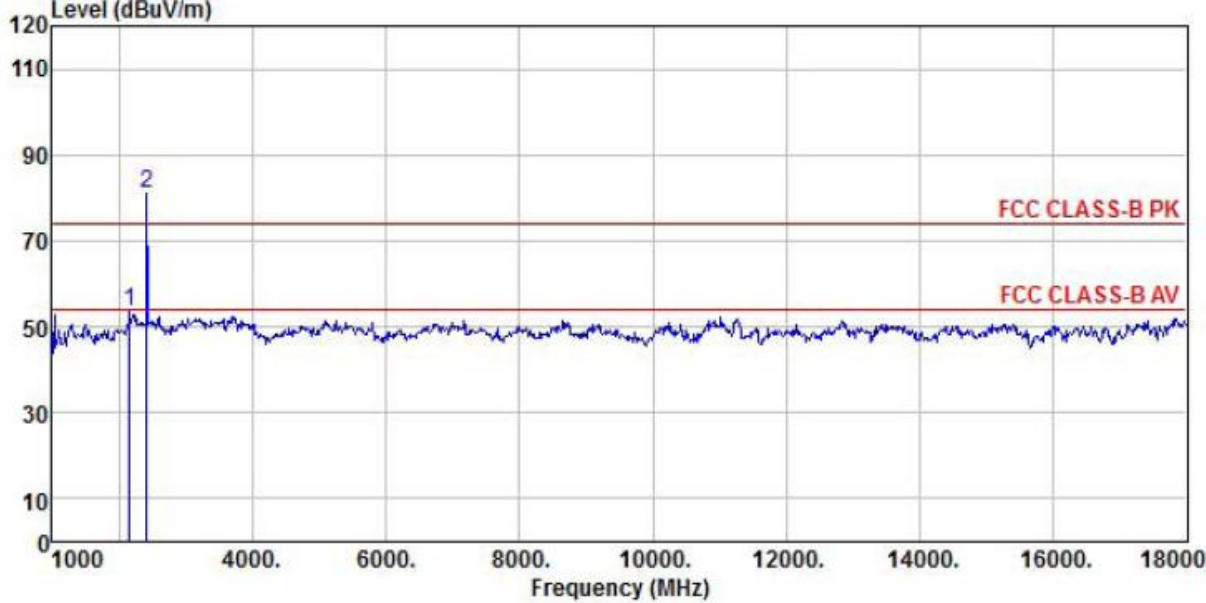
Freq	ReadAntenna		Cable Preamp		Level	Limit	Over	Remark
	Level	Factor	Loss	Factor		Line	Limit	
MHz	dBuV	dB/m	dB	dB	dBuV/m	dBuV/m	dB	
1 pp 746.83	-0.49	39.91	3.79	0.00	43.21	46.00	-2.79	Peak



Site : chamber
Condition : FCC CLASS-B 3m VULB9160(RSE-V) VERTICAL
EUT : Coolpad Flo
Model Name : Coolpad 7560T
Temp/Humi : 23 °C / 55%
Power Rating: DC 3.7V
Mode : wifi ch13 11n
Memo :

1 pp	Freq	ReadAntenna		Cable Preamp		Limit		Over	Remark
		Level	Factor	Loss	Factor	Level	Line		
	MHz	dBuV	dB/m	dB	dB	dBuV/m	dBuV/m	dB	
1 pp	939.86	1.61	36.48	4.13	0.00	42.22	46.00	-3.78	Peak

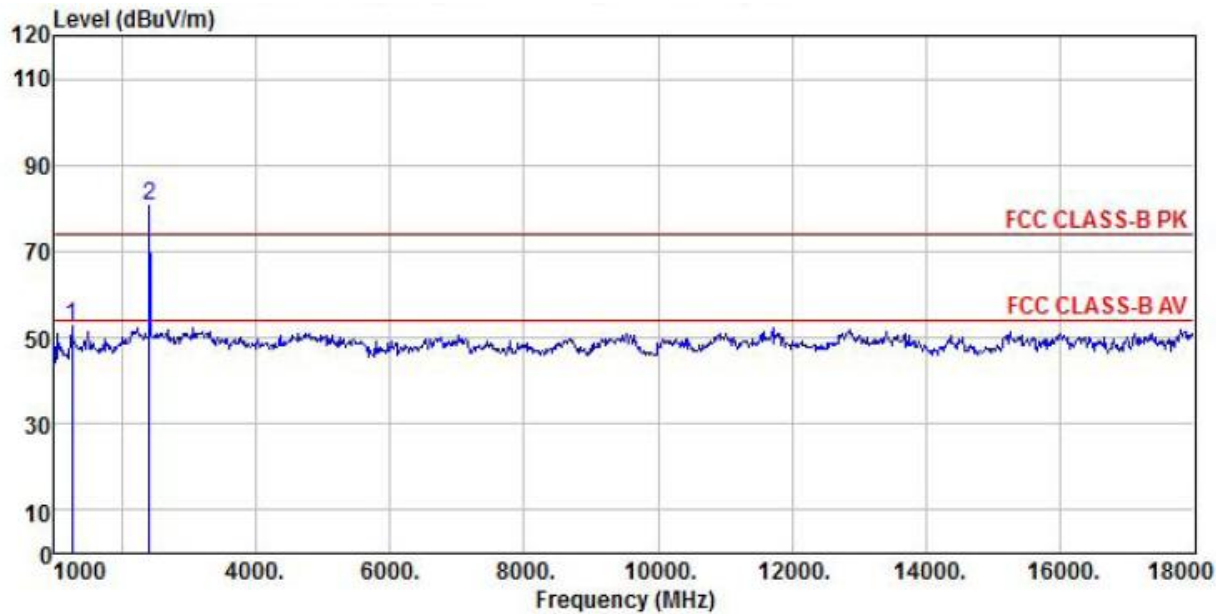
Above 1GHz:
802.11b, traffic mode; Channel 1



Site : chamber
Condition : FCC CLASS-B PK 3m BBHA9120D(RSE-H) HORIZONTAL
EUT : Coolpad Flo
Model Name : Coolpad 7560T
Temp/Humi : 23 °C / 55%
Power Rating: DC 3.7V
Mode : wifi ch1 11b
Memo :

	Freq	ReadAntenna	Cable	Preamp	Limit	Over	
		Level	Factor	Loss	Factor	Line	Limit
	MHz	dBuV	dB/m	dB	dB	dBuV/m	dBuV/m
1	2156.00	46.68	38.34	6.79	38.44	53.37	74.00
2 pp	2411.00	74.24	37.89	7.21	38.34	81.00	74.00

Notes: there is not any harmonic but for background noise above 6GHz



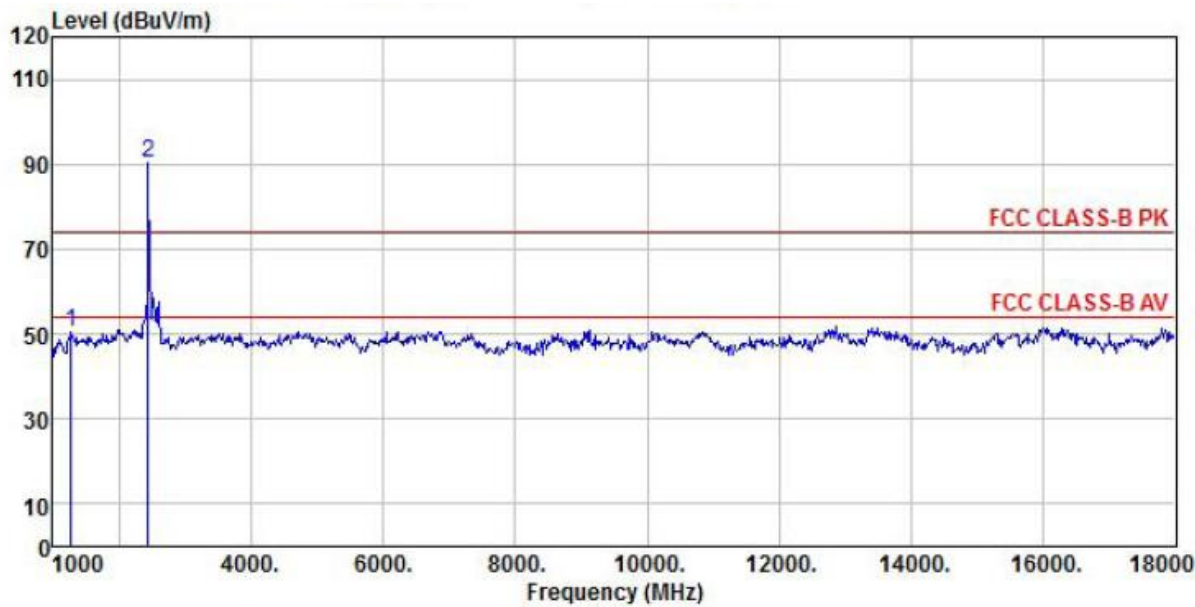
Site : chamber
Condition : FCC CLASS-B PK 3m BBHA9120D(RSE-V) VERTICAL
EUT : Coolpad Flo
Model Name : Coolpad 7560T
Temp/Humi : 23 °C / 55%
Power Rating: DC 3.7V
Mode : wifi ch1 11b
Memo :

	Freq	ReadAntenna		Cable Preamp		Limit	Over	Remark
		Level	Factor	Loss	Factor	Line	Limit	
	MHz	dBuV	dB/m	dB	dB	dBuV/m	dBuV/m	dB
1	1255.00	46.91	39.31	5.09	38.43	52.88	74.00	-21.12 Peak
2 pp	2411.00	73.98	37.89	7.21	38.34	80.74	74.00	6.74 Peak

Notes: there is not any harmonic but for background noise above 6GHz

	Freq	ReadAntenna Level Factor	Cable Loss	Preamp Factor	Level	Limit Line	Over Limit	Remark
	MHz	dBuV	dB/m	dB	dBuV/m	dBuV/m	dB	
	1306.00	44.14	39.36	5.26	38.43	50.33	74.00	-23.67 Peak
	2445.00	85.76	38.25	7.37	38.32	93.06	74.00	19.06 Peak

Notes: there is not any harmonic but for background noise above 6GHz

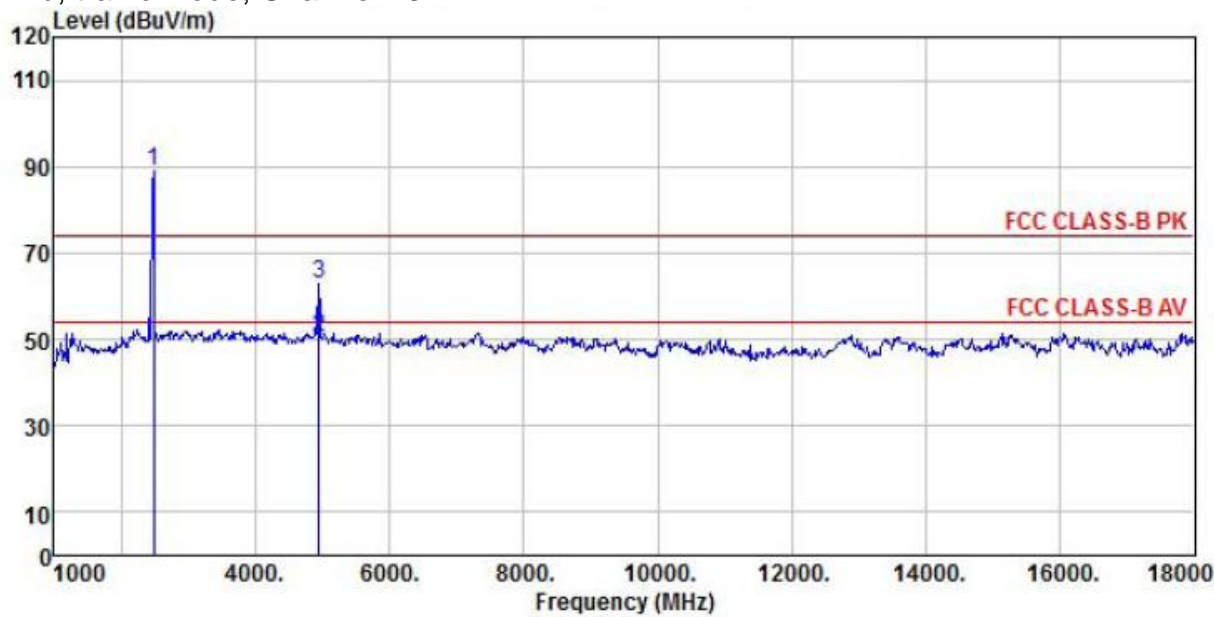


Site : chamber
Condition : FCC CLASS-B PK 3m BBHA9120D(RSE-H) HORIZONTAL
EUT : Coolpad Flo
Model Name : Coolpad 7560T
Temp/Humi : 23 °C / 55%
Power Rating: DC 3.7V
Mode : wifi ch7 11b
Memo :

	Freq	ReadAntenna	Cable	Preamp		Limit	Over	
		Level	Loss	Factor	Level	Line	Limit	Remark
	MHz	dBuV	dB/m	dB	dB	dBuV/m	dBuV/m	dB
1	1272.00	44.39	39.33	5.14	38.43	50.43	74.00	-23.57 Peak
2 pp	2445.00	83.03	38.25	7.37	38.32	90.33	74.00	16.33 Peak

Notes: there is not any harmonic but for background noise above 6GHz

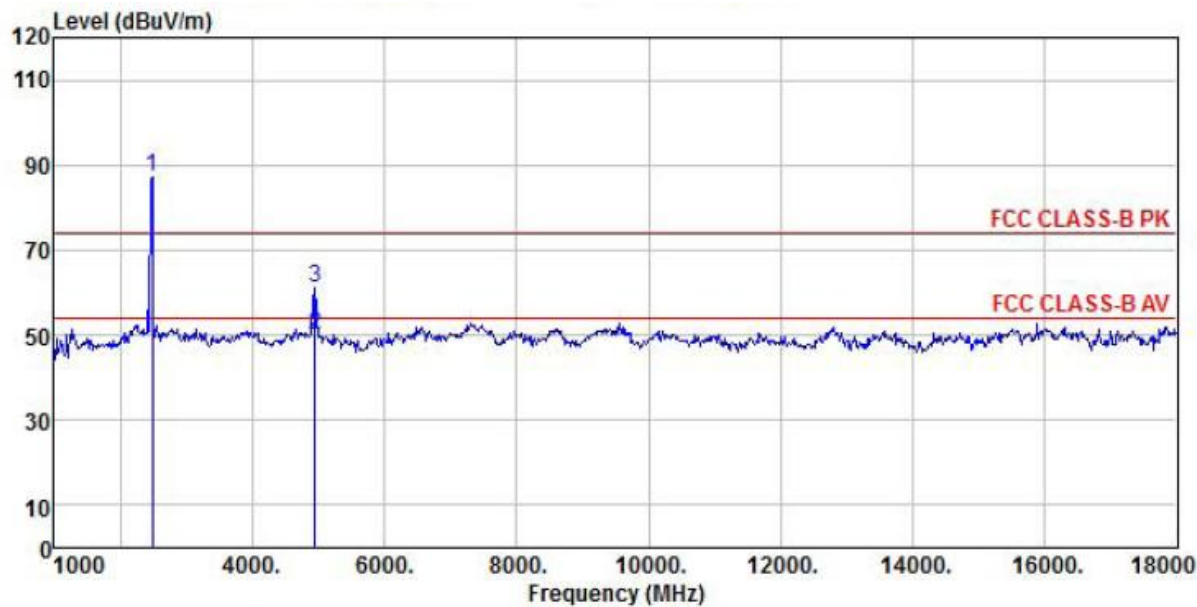
802.11b, traffic mode; Channel 13



Site : chamber
Condition : FCC CLASS-B PK 3m BBHA9120D(RSE-V) VERTICAL
EUT : Coolpad Flo
Model Name : Coolpad 7560T
Temp/Humi : 23 °C / 55%
Power Rating: DC 3.7V
Mode : wifi ch13 11b
Memo :

		ReadAntenna	Cable	Preamp		Limit	Over	
	Freq	Level	Factor	Loss	Factor	Level	Line	Limit
	MHz	dBuV	dB/m	dB	dB	dBuV/m	dBuV/m	dB
1	pp	2479.00	81.31	38.38	7.41	38.31	88.79	74.00
2	av	4944.00	34.84	41.95	10.62	37.12	50.29	54.00
3		4944.00	47.36	41.95	10.62	37.12	62.81	74.00

Notes: there is not any harmonic but for background noise above 6GHz

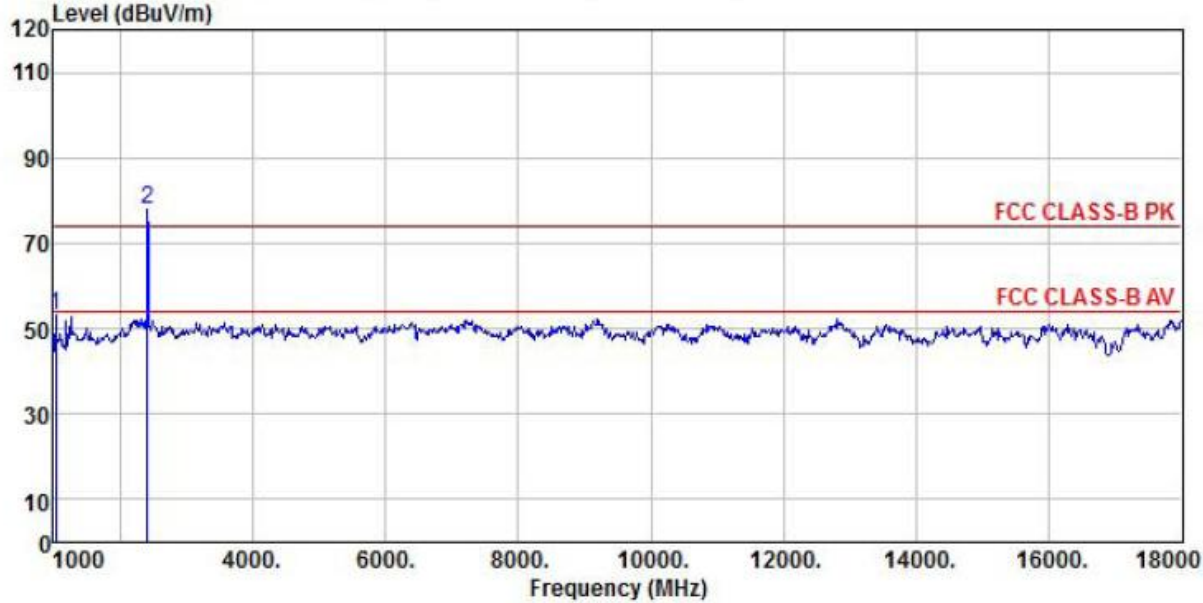


Site : chamber
Condition : FCC CLASS-B PK 3m BBHA9120D(RSE-H) HORIZONTAL
EUT : Coolpad Flo
Model Name : Coolpad 7560T
Temp/Humi : 23 °C / 55%
Power Rating: DC 3.7V
Mode : wifi ch13 11b
Memo :

		ReadAntenna	Cable	Preamp		Limit	Over	
	Freq	Level	Factor	Loss	Factor	Level	Line	Limit Remark
	MHz	dBuV	dB/m	dB	dB	dBuV/m	dBuV/m	dB
1	pp 2479.00	79.68	38.38	7.41	38.31	87.16	74.00	13.16 Peak
2	av 4944.00	34.46	41.95	10.62	37.12	49.91	54.00	-4.09 Average
3	4944.00	45.58	41.95	10.62	37.12	61.03	74.00	-12.97 Peak

Notes: there is not any harmonic but for background noise above 6GHz

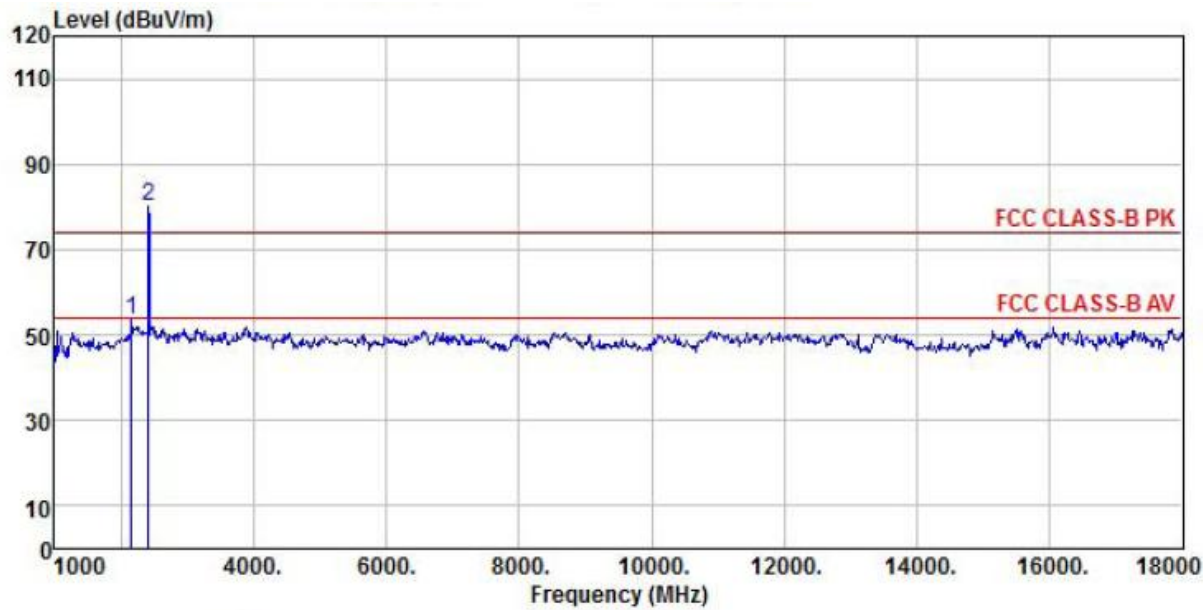
802.11g, traffic mode; Channel 1



Site : chamber
Condition : FCC CLASS-B PK 3m BBHA9120D(RSE-V) VERTICAL
EUT : Coolpad Flo
Model Name : Coolpad 7560T
Temp/Humi : 23 °C / 55%
Power Rating: DC 3.7V
Mode : wifi ch1 11g
Memo :

	Freq	ReadAntenna	Cable	Preamp		Limit	Over	
		Level	Factor	Loss	Factor	Level	Line	Limit
	MHz	dBuV	dB/m	dB	dB	dBuV/m	dBuV/m	dB
1	1034.00	50.88	35.97	4.77	38.40	53.22	74.00	-20.78 Peak
2 pp	2411.00	71.04	37.89	7.21	38.34	77.80	74.00	3.80 Peak

Notes: there is not any harmonic but for background noise above 6GHz

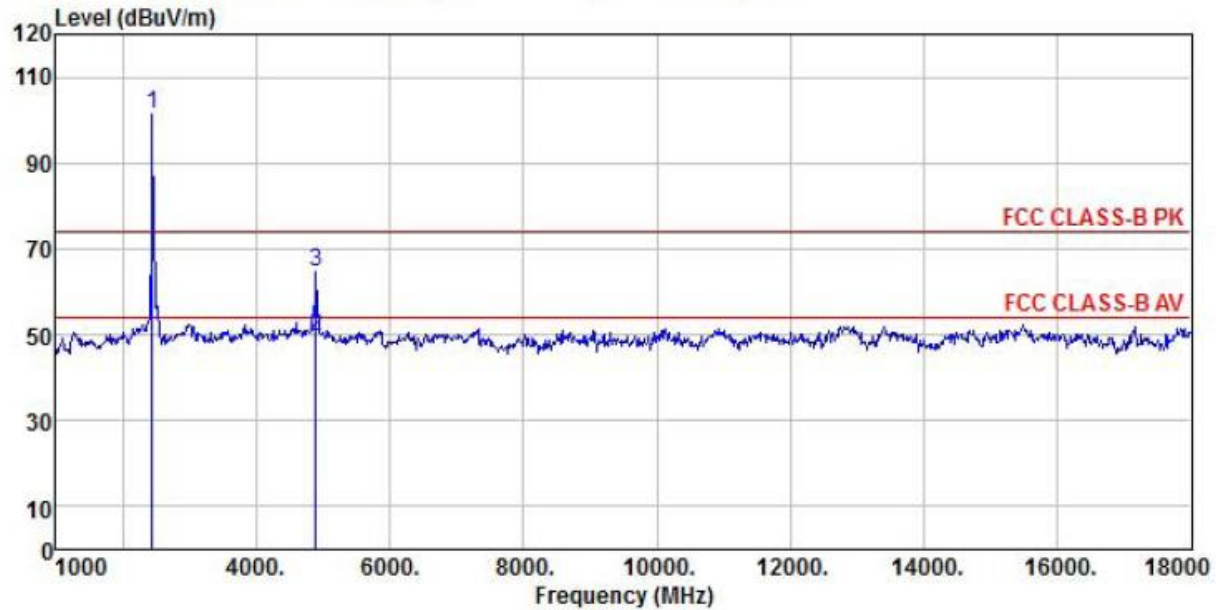


Site : chamber
Condition : FCC CLASS-B PK 3m BBHA9120D(RSE-H) HORIZONTAL
EUT : Coolpad Flo
Model Name : Coolpad 7560T
Temp/Humi : 23 °C / 55%
Power Rating: DC 3.7V
Mode : wifi ch1 11g
Memo :

	Freq	ReadAntenna	Cable	Preamp		Limit	Over	
		Level	Factor	Loss	Factor	Level	Line	Limit
	MHz	dBuV	dB/m	dB	dB	dBuV/m	dBuV/m	dB
1	2156.00	46.81	38.34	6.79	38.44	53.50	74.00	-20.50 Peak
2 pp	2411.00	73.24	37.89	7.21	38.34	80.00	74.00	6.00 Peak

Notes: there is not any harmonic but for background noise above 6GHz

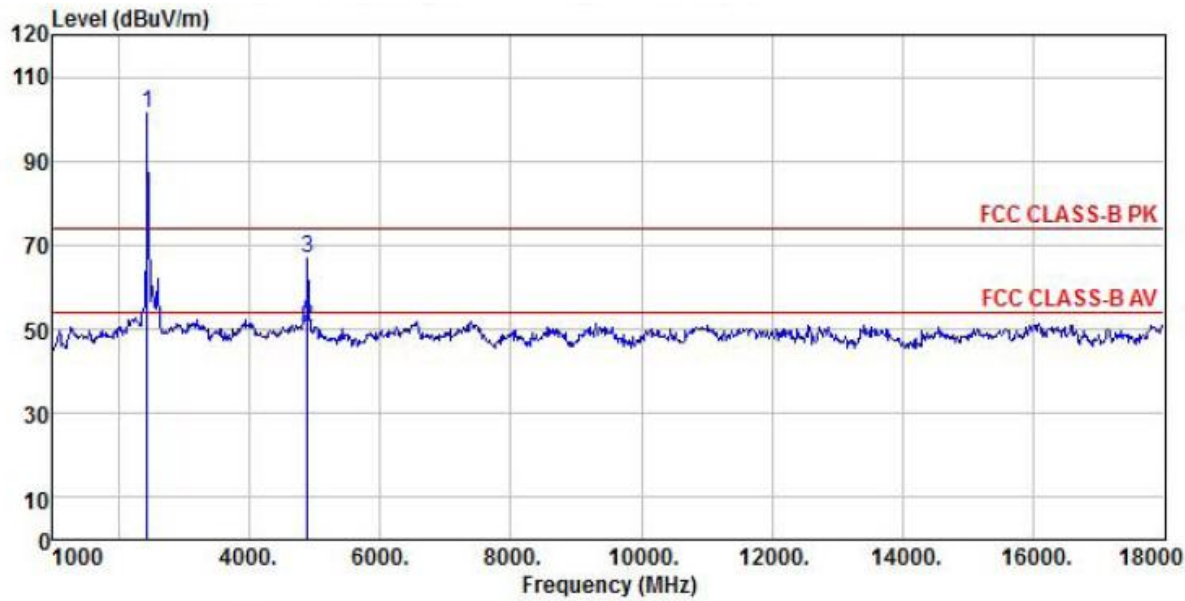
802.11g, traffic mode; Channel 7



Site : chamber
Condition : FCC CLASS-B PK 3m BBHA9120D(RSE-H) HORIZONTAL
EUT : Coolpad Flo
Model Name : Coolpad 7560T
Temp/Humi : 23 °C / 55%
Power Rating: DC 3.7V
Mode : wifi ch7 11g
Memo :

		ReadAntenna	Cable	Preamp		Limit	Over	
	Freq	Level	Factor	Loss	Factor	Level	Line	Limit Remark
	MHz	dBuV	dB/m	dB	dB	dBuV/m	dBuV/m	dB
1	pp	2445.00	94.09	38.25	7.37	38.32	101.39	74.00 27.39 Peak
2	av	4893.00	34.96	41.55	10.35	37.14	49.72	54.00 -4.28 Average
3		4893.00	49.93	41.55	10.35	37.14	64.69	74.00 -9.31 Peak

Notes: there is not any harmonic but for background noise above 6GHz

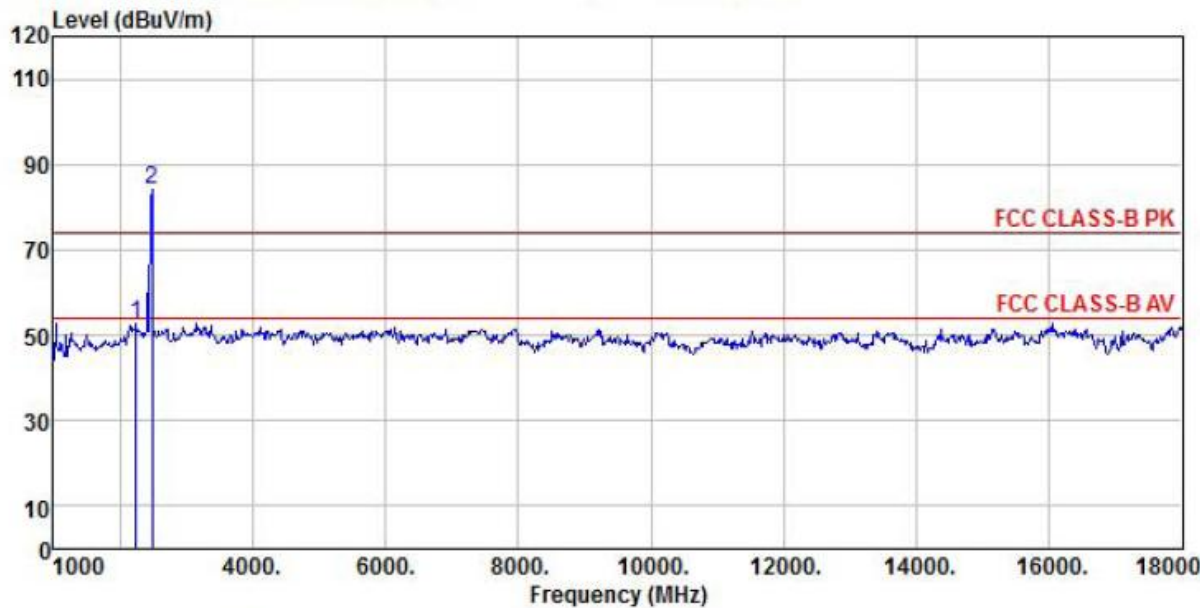


Site : chamber
Condition : FCC CLASS-B PK 3m BBHA9120D(RSE-V) VERTICAL
EUT : Coolpad Flo
Model Name : Coolpad 7560T
Temp/Humi : 23 °C / 55%
Power Rating: DC 3.7V
Mode : wifi ch7 11g
Memo :

	Freq	ReadAntenna	Cable	Preamp		Limit	Over	
	Level	Factor	Loss	Factor	Level	Line	Limit	Remark
	MHz	dBuV	dB/m	dB	dB	dBuV/m	dBuV/m	dB
1 pp	2445.00	94.32	38.25	7.37	38.32	101.62	74.00	27.62 Peak
2 av	4893.00	35.89	41.55	10.35	37.14	50.65	54.00	-3.35 Average
3	4893.00	52.06	41.55	10.35	37.14	66.82	74.00	-7.18 Peak

Notes: there is not any harmonic but for background noise above 6GHz

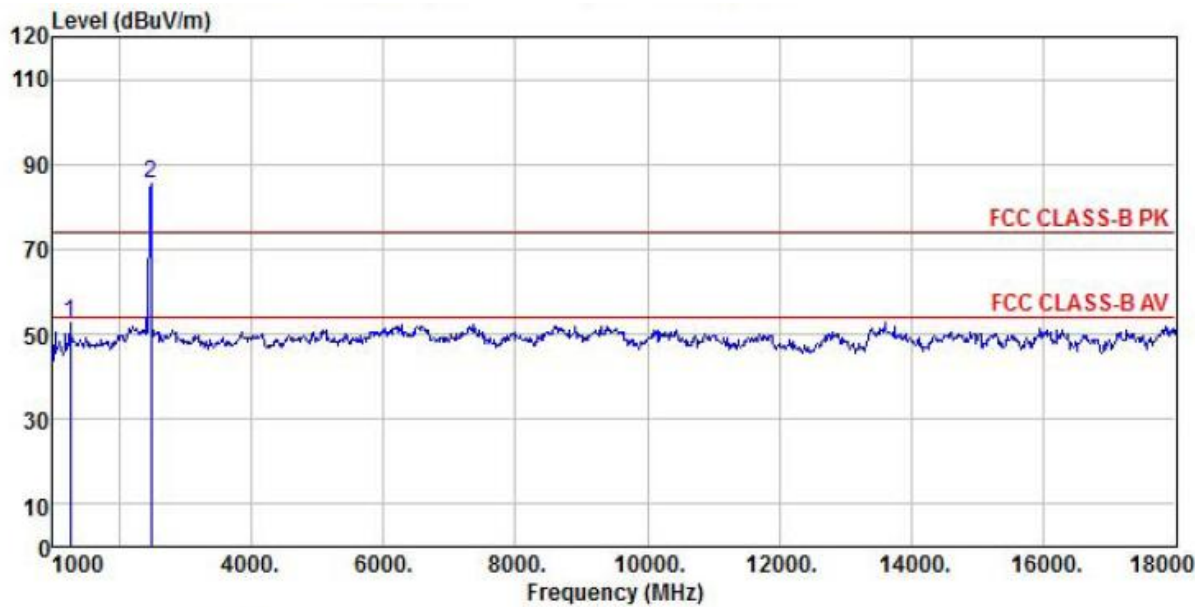
802.11g, traffic mode; Channel 13



Site : chamber
Condition : FCC CLASS-B PK 3m BBHA9120D(RSE-H) HORIZONTAL
EUT : Coolpad Flo
Model Name : Coolpad 7560T
Temp/Humi : 23 °C / 55%
Power Rating: DC 3.7V
Mode : wifi ch13 11g
Memo :

	Freq	ReadAntenna	Cable	Preamp		Limit	Over	
		Level	Factor	Loss	Factor	Level	Line	Limit Remark
	MHz	dBuV	dB/m	dB	dB	dBuV/m	dBuV/m	dB
1	2241.00	44.57	39.68	6.83	38.41	52.67	74.00	-21.33 Peak
2 pp	2479.00	76.59	38.38	7.41	38.31	84.07	74.00	10.07 Peak

Notes: there is not any harmonic but for background noise above 6GHz

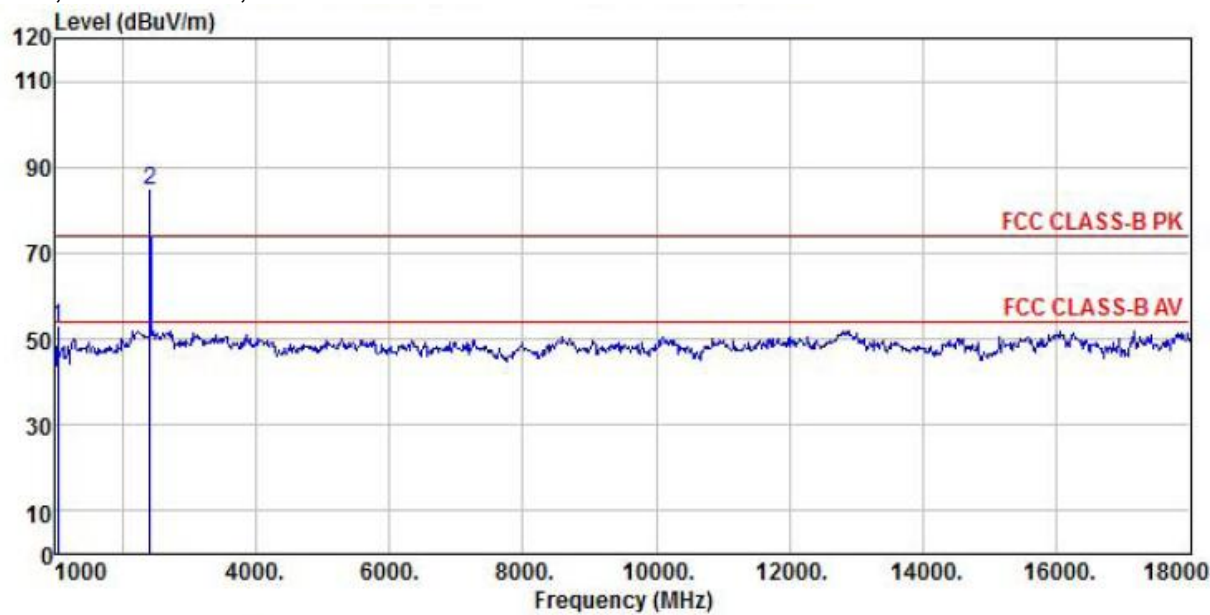


Site : chamber
Condition : FCC CLASS-B PK 3m BBHA9120D(RSE-V) VERTICAL
EUT : Coolpad Flo
Model Name : Coolpad 7560T
Temp/Humi : 23 °C / 55%
Power Rating: DC 3.7V
Mode : wifi ch13 11g
Memo :

	Freq	ReadAntenna Level	Antenna Factor	Cable Loss	Preamplifier Factor	Level	Limit Line	Over Limit	Remark
	MHz	dBuV	dB/m	dB	dB	dBuV/m	dBuV/m	dB	
1	1255.00	46.58	39.31	5.09	38.43	52.55	74.00	-21.45	Peak
2 pp	2479.00	77.83	38.38	7.41	38.31	85.31	74.00	11.31	Peak

Notes: there is not any harmonic but for background noise above 6GHz

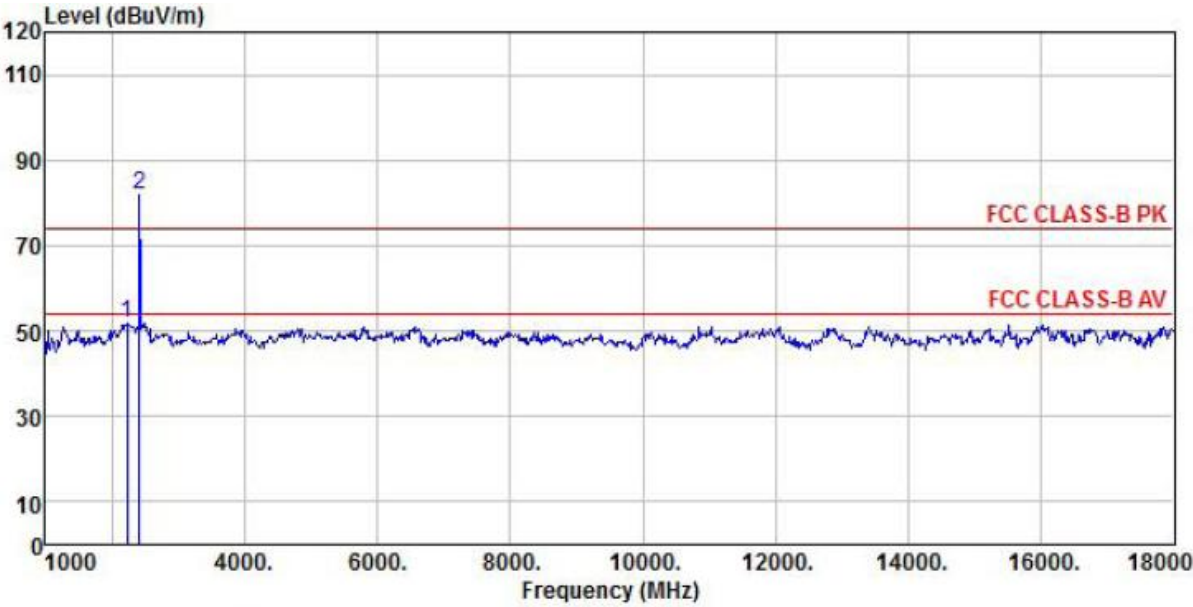
802.11n, traffic mode; Channel 1



Site : chamber
Condition : FCC CLASS-B PK 3m BBHA9120D(RSE-H) HORIZONTAL
EUT : Coolpad Flo
Model Name : Coolpad 7560T
Temp/Humi : 23 °C / 55%
Power Rating: DC 3.7V
Mode : wifi ch1 11n
Memo :

	Freq	ReadAntenna Level	Antenna Factor	Cable Loss	Preamp Factor	Level	Limit Line	Over Limit	Remark
	MHz	dBuV	dB/m	dB	dB	dBuV/m	dBuV/m	dB	
1	1034.00	50.20	35.97	4.77	38.40	52.54	74.00	-21.46	Peak
2 pp	2411.00	78.02	37.89	7.21	38.34	84.78	74.00	10.78	Peak

Notes: there is not any harmonic but for background noise above 6GHz

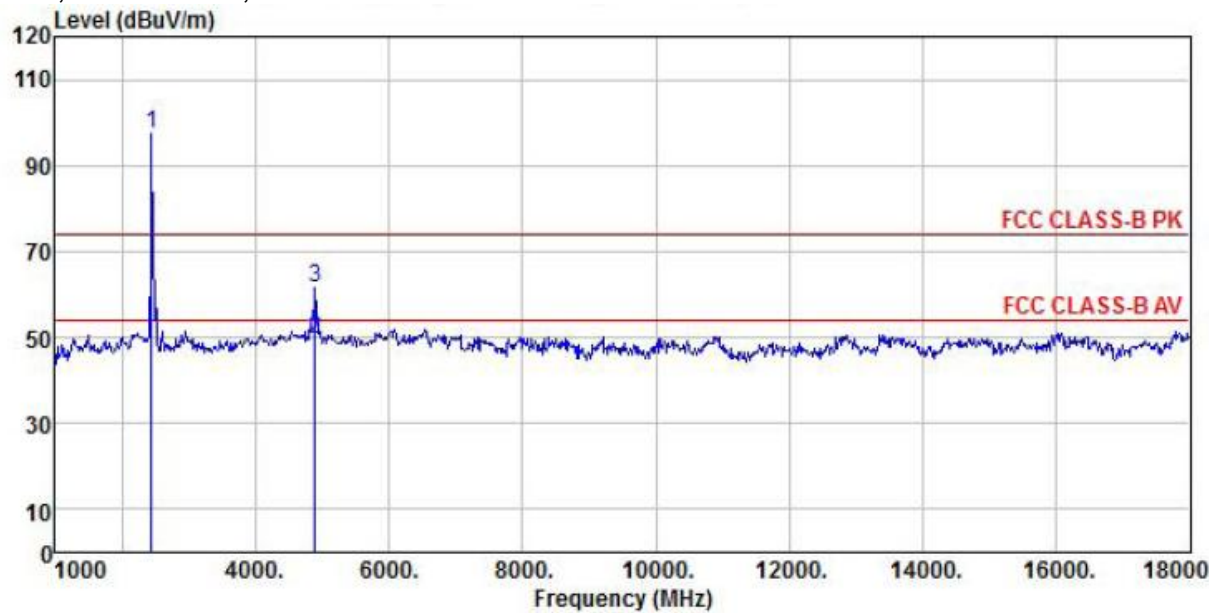


Site : chamber
Condition : FCC CLASS-B PK 3m BBHA9120D(RSE-V) VERTICAL
EUT : Coolpad Flo
Model Name : Coolpad 7560T
Temp/Humi : 23 °C / 55%
Power Rating: DC 3.7V
Mode : wifi ch1 11n
Memo :

		ReadAntenna	Cable	Preamp		Limit	Over	
	Freq	Level	Factor	Loss	Factor	Level	Line	Limit
	MHz	dBuV	dB/m	dB	dB	dBuV/m	dBuV/m	dB
1	2224.00	43.51	39.75	6.81	38.41	51.66	74.00	-22.34 Peak
2 pp	2411.00	75.35	37.89	7.21	38.34	82.11	74.00	8.11 Peak

Notes: there is not any harmonic but for background noise above 6GHz

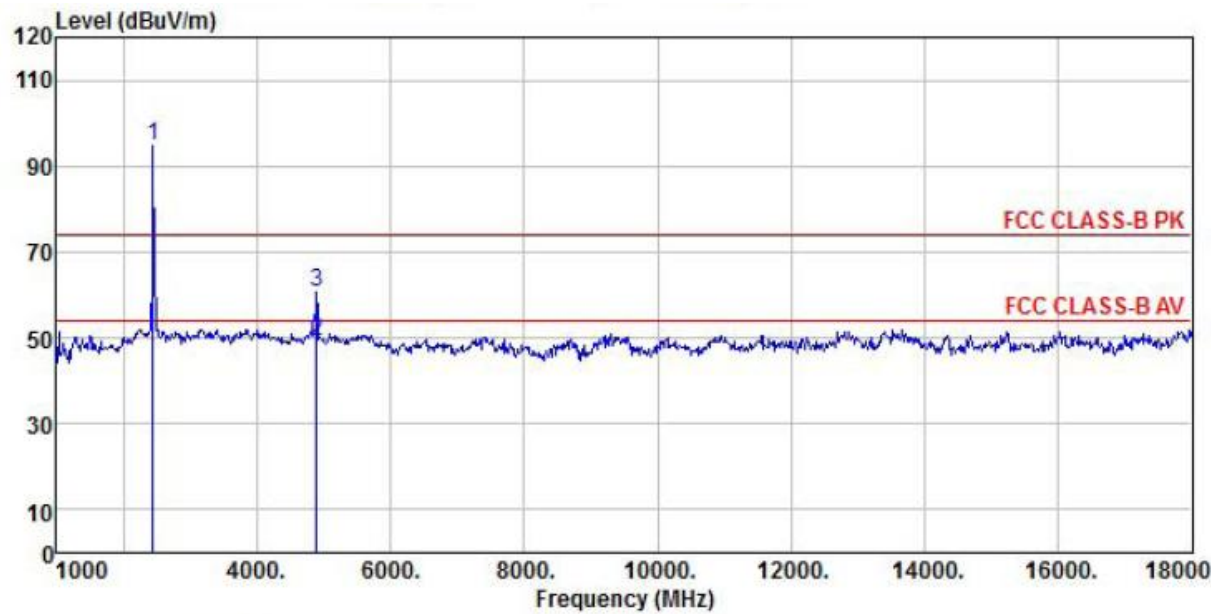
802.11n, traffic mode; Channel 7



Site : chamber
Condition : FCC CLASS-B PK 3m BBHA9120D(RSE-V) VERTICAL
EUT : Coolpad Flo
Model Name : Coolpad 7560T
Temp/Humi : 23 °C / 55%
Power Rating: DC 3.7V
Mode : wifi ch7 11n
Memo :

		ReadAntenna	Cable	Preamp		Limit	Over	
	Freq	Level	Factor	Loss	Factor	Level	Line	Limit
	MHz	dBuV	dB/m	dB	dB	dBuV/m	dBuV/m	dB
1	pp	2445.00	90.31	38.25	7.37	38.32	97.61	74.00
2	av	4893.00	34.95	41.55	10.35	37.14	49.71	54.00
3		4893.00	46.75	41.55	10.35	37.14	61.51	74.00

Notes: there is not any harmonic but for background noise above 6GHz

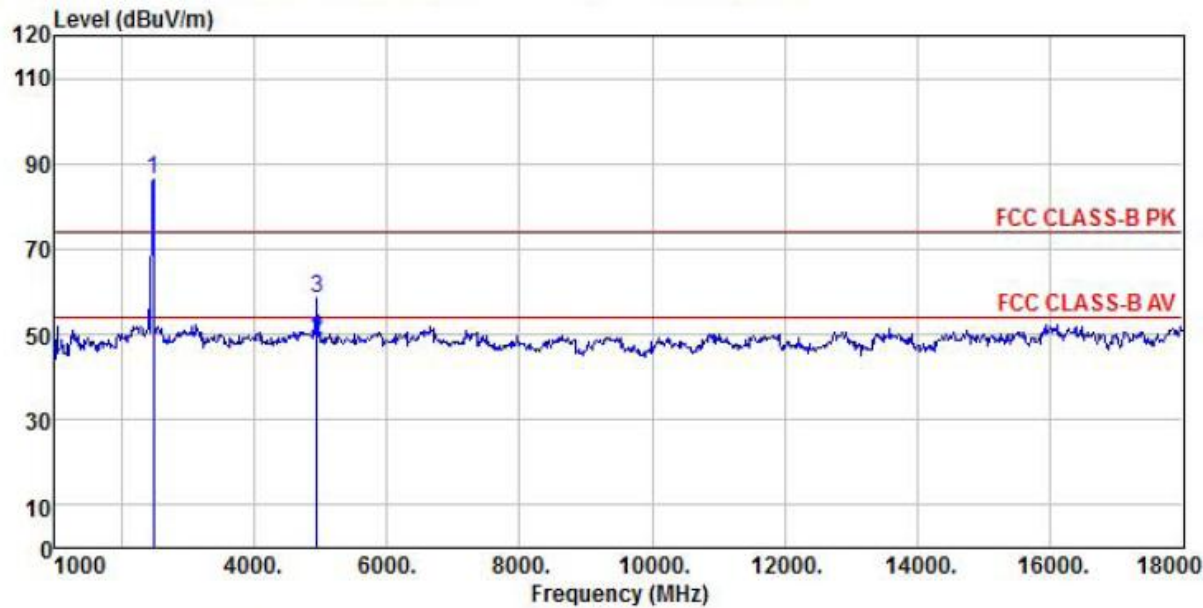


Site : chamber
Condition : FCC CLASS-B PK 3m BBHA9120D(RSE-H) HORIZONTAL
EUT : Coolpad Flo
Model Name : Coolpad 7560T
Temp/Humi : 23 °C / 55%
Power Rating: DC 3.7V
Mode : wifi ch7 11n
Memo :

	Freq	ReadAntenna Level	Cable Factor	Preamp Loss	Factor	Limit Level	Over Line	Remark
	MHz	dBuV	dB/m	dB	dB	dBuV/m	dBuV/m	dB
1 pp	2445.00	87.62	38.25	7.37	38.32	94.92	74.00	20.92 Peak
2 av	4893.00	34.36	41.55	10.35	37.14	49.12	54.00	-4.88 Average
3	4893.00	46.02	41.55	10.35	37.14	60.78	74.00	-13.22 Peak

Notes: there is not any harmonic but for background noise above 6GHz

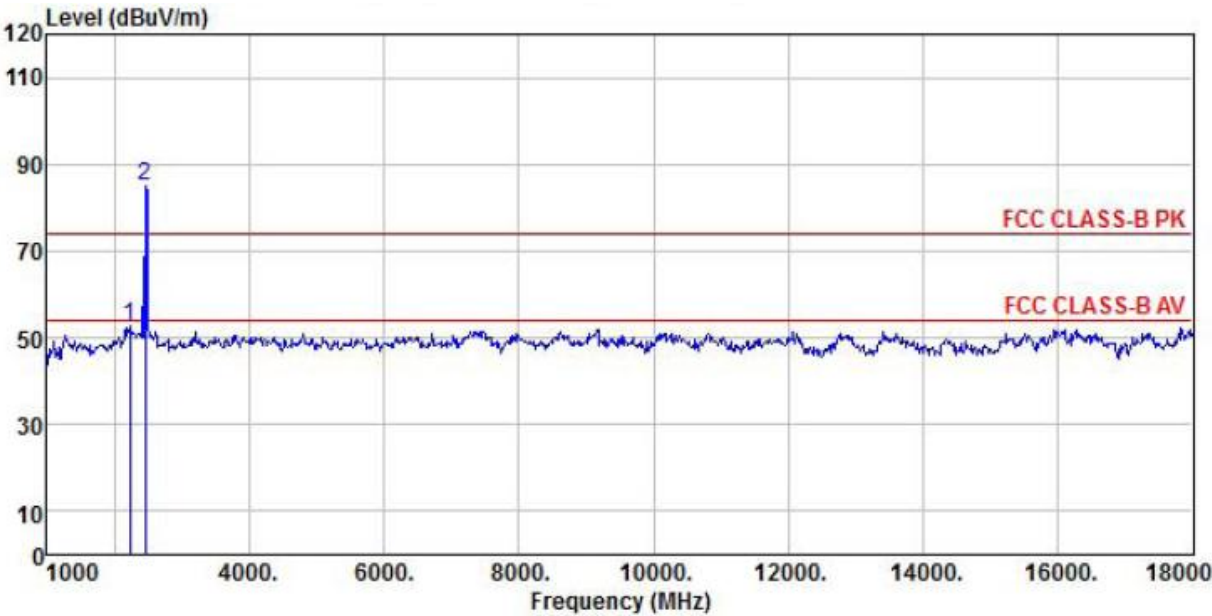
802.11n, traffic mode; Channel 13



Site : chamber
Condition : FCC CLASS-B PK 3m BBHA9120D(RSE-V) VERTICAL
EUT : Coolpad Flo
Model Name : Coolpad 7560T
Temp/Humi : 23 °C / 55%
Power Rating: DC 3.7V
Mode : wifi ch13 11n
Memo :

		ReadAntenna	Cable	Preamp		Limit	Over	
	Freq	Level	Factor	Loss	Factor	Level	Line	Limit
	MHz	dBuV	dB/m	dB	dB	dBuV/m	dBuV/m	dB
1	pp	2479.00	78.93	38.38	7.41	38.31	86.41	74.00
2	av	4944.00	33.37	41.95	10.62	37.12	48.82	54.00
3		4944.00	42.95	41.95	10.62	37.12	58.40	74.00

Notes: there is not any harmonic but for background noise above 6GHz



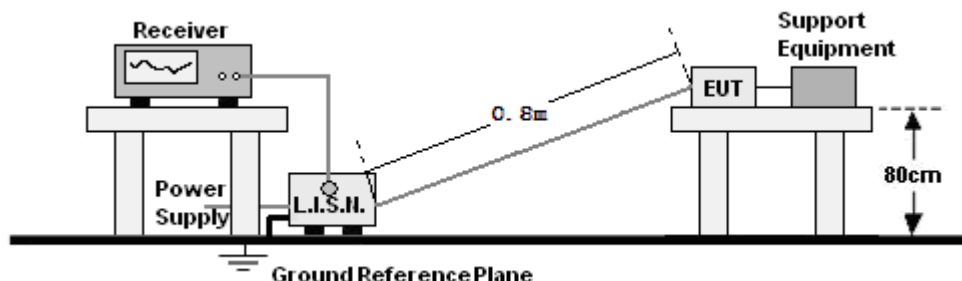
Site : chamber
Condition : FCC CLASS-B PK 3m BBHA9120D(RSE-H) HORIZONTAL
EUT : Coolpad Flo
Model Name : Coolpad 7560T
Temp/Humi : 23 °C / 55%
Power Rating: DC 3.7V
Mode : wifi ch13 11n
Memo :

	Freq	ReadAntenna Level	Antenna Factor	Cable Loss	Preamplifier Factor	Level	Limit Line	Over Limit	Remark
	MHz	dBuV	dB/m	dB	dB	dBuV/m	dBuV/m	dB	
1	2224.00	44.69	39.75	6.81	38.41	52.84	74.00	-21.16	Peak
2 pp	2462.00	77.61	38.39	7.39	38.32	85.07	74.00	11.07	Peak

Notes: there is not any harmonic but for background noise above 6GHz

11. AC POWER LINE CONDUCTED EMISSIONS

11.1 TEST SETUP



11.2 LIMITS

Frequency range (MHz)	Limits dB(μV)	
	Quasi-peak	Average
0,15 to 0,50	66 to 56	56 to 46
0,50 to 5	56	46
5 to 30	60	50

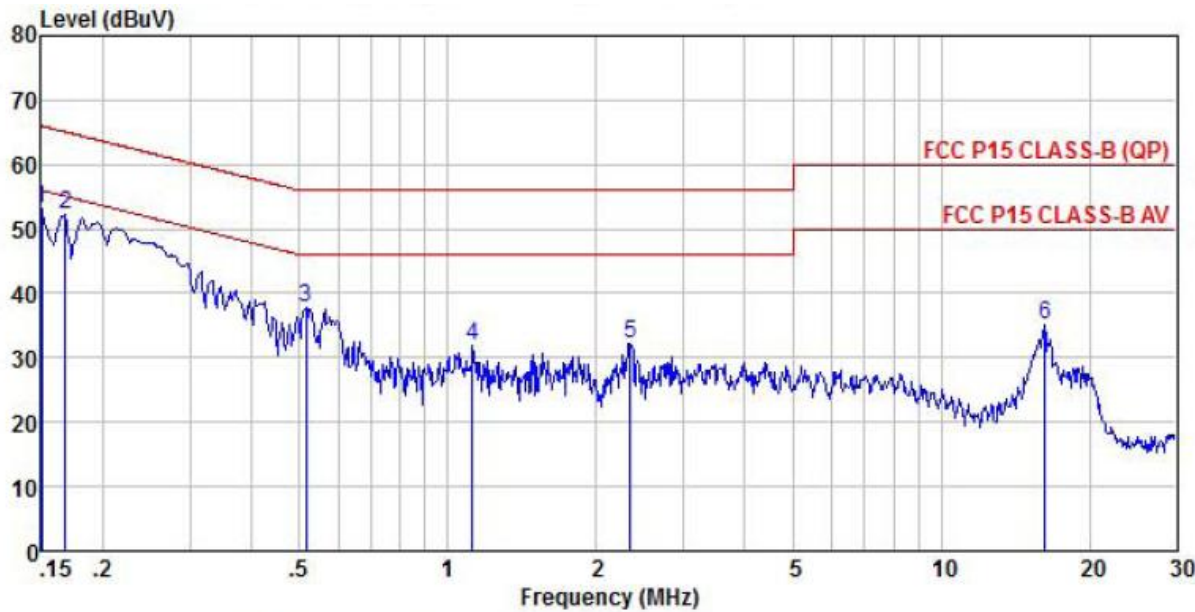
NOTE: 1. The lower limit shall apply at the transition frequencies.
2. The limit decreases linearly with the logarithm of the frequency in the range 0.15 to 0.50 MHz.

11.3 TEST PROCEDURE

According to description of ANSI C63.4: 2009 sec.13.1.3, the AC power line preliminary conducted emissions measurements were carried out. The preliminary conducted measurements were performed using the spectrum analyzer to observe the emission characteristics of the EUT. The EUT configuration, cable configuration and mode of operation were determined for producing the maximum level of emissions. These configurations were used for final AC power line conducted emissions measurements. The EUT is placed on a non-metallic table 0.8m above the horizontal metal reference ground plane. The EUT is connected to LISN and LISN is connected to the reference ground. All other supplemental devices are connected with EUT through other LISN. The distance between EUT and LISN is 80cm. A radio link is established between EUT and the tester. The output power of the EUT is controlled by the tester and driven to maximum value. An initial pre-scan was performed on the live L line and neutral line with peak detector (9kHz RBW). Both average detector and quasi-peak detector are performed at the frequencies with maximized peak emission. Conducted emissions were investigated over the frequency range from 0.15MHz to 30MHz using a receiver bandwidth of 9kHz.

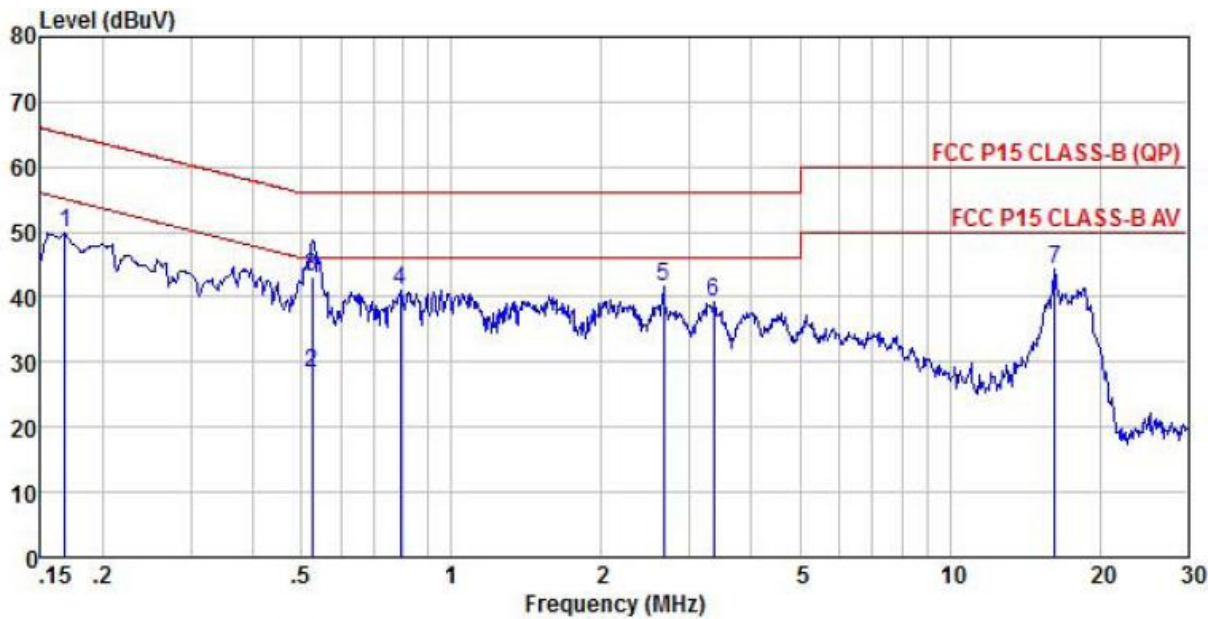
11.4 RESULTS & PERFORMANCE

802.11b



Site : shielded room 3
Condition : FCC P15 CLASS-B (QP) ENV216(L)-20120730 LINE
EUT : Coolpad Flo
Model Name : Coolpad 7560T
Temp/Humi : 23 °C / 55%
Power Rating: AC 120V/60Hz
Mode : WIFI 11b
Memo :

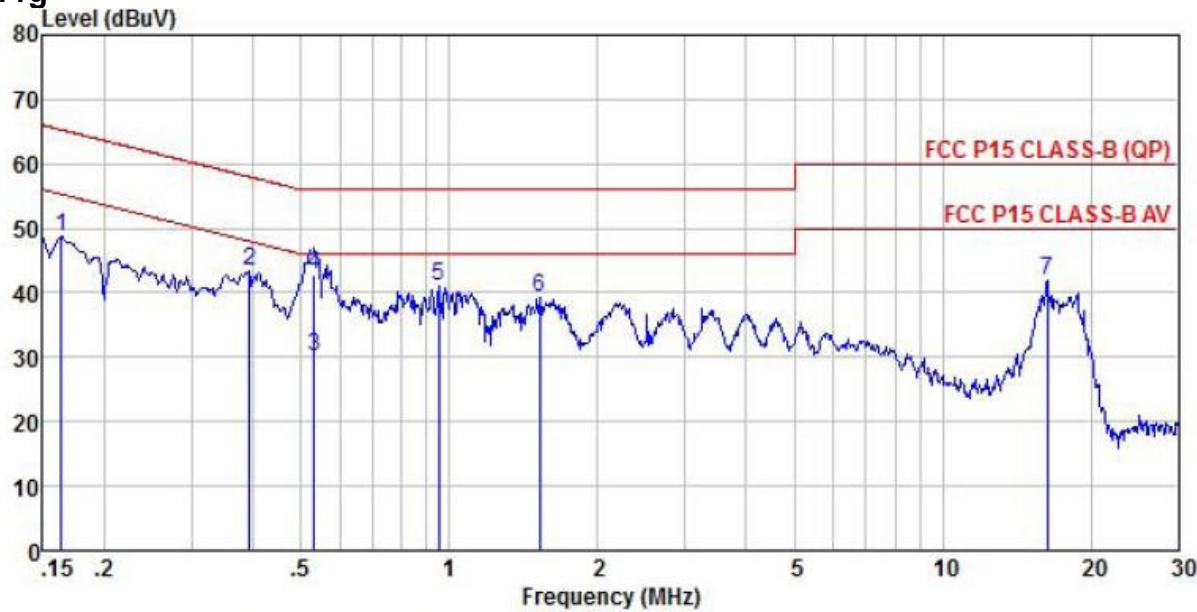
	Freq	ReadAntenna Level	Cable Factor	Preamp Loss	Preamp Factor	Limit Level	Over Line	Over Limit	Remark
	MHz	dBuV	dB/m	dB	dB	dBuV/m	dBuV/m	dB	
1	0.15	42.55	10.36	0.09	0.00	53.00	66.00	-13.00	Peak
2 pp	0.17	41.79	10.49	0.09	0.00	52.37	65.08	-12.71	Peak
3	0.52	27.11	10.55	0.10	0.00	37.76	56.00	-18.24	Peak
4	1.12	21.25	10.52	0.14	0.00	31.91	56.00	-24.09	Peak
5	2.35	21.60	10.52	0.15	0.00	32.27	56.00	-23.73	Peak
6	16.23	24.53	10.52	0.11	0.00	35.16	60.00	-24.84	Peak



Site : shielded room 3
Condition : FCC P15 CLASS-B (QP) ENV216(N)-20120730 NEUTRAL
EUT : Coolpad Flo
Model Name : Coolpad 7560T
Temp/Humi : 23 °C / 55%
Power Rating: AC 120V/60Hz
Mode : WIFI 11b
Memo :

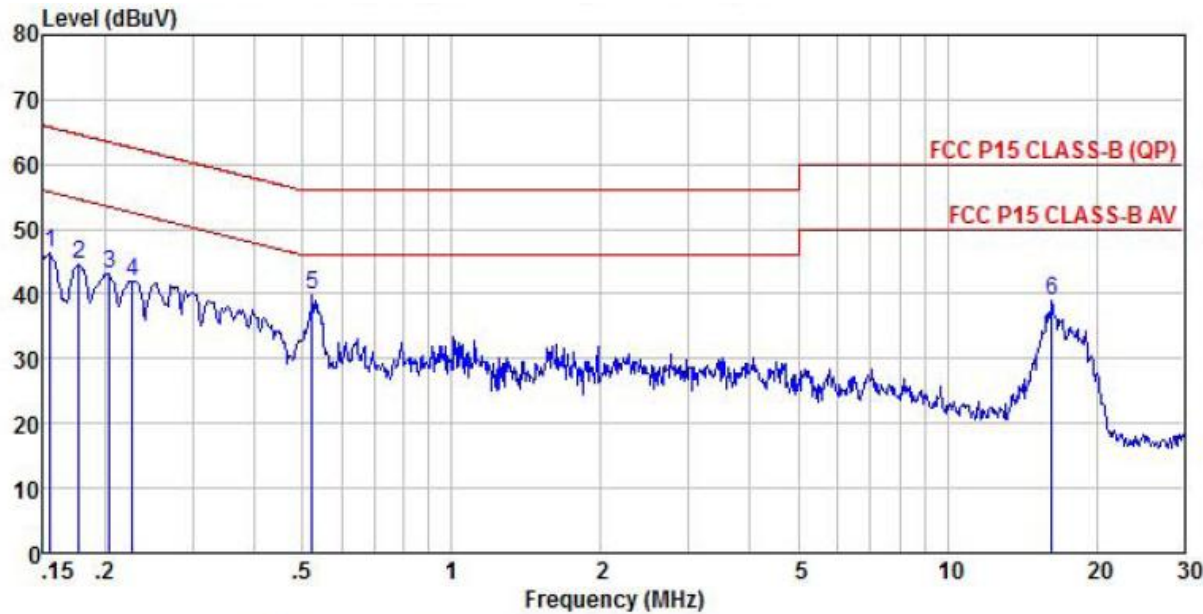
		ReadAntenna	Cable	Preamp		Limit	Over	
	Freq	Level	Factor	Loss	Factor	Level	Line	Limit
	MHz	dBuV	dB/m	dB	dB	dBuV/m	dBuV/m	dB
1	0.17	39.44	10.27	0.09	0.00	49.80	65.08	-15.28
2 av	0.53	17.69	10.40	0.10	0.00	28.19	46.00	-17.81
3 pp	0.53	32.72	10.40	0.10	0.00	43.22	56.00	-12.78
4	0.79	30.71	10.31	0.13	0.00	41.15	56.00	-14.85
5 pk	2.66	31.28	10.32	0.15	0.00	41.75	56.00	-14.25
6	3.36	28.69	10.32	0.15	0.00	39.16	56.00	-16.84
7	16.23	33.62	10.52	0.11	0.00	44.25	60.00	-15.75

802.11g



Site : shielded room 3
Condition : FCC P15 CLASS-B (QP) ENV216(N)-20120730 NEUTRAL
EUT : Coolpad Flo
Model Name : Coolpad 7560T
Temp/Humi : 23 °C / 55%
Power Rating: AC 120V/60Hz
Mode : WIFI 11g
Memo :

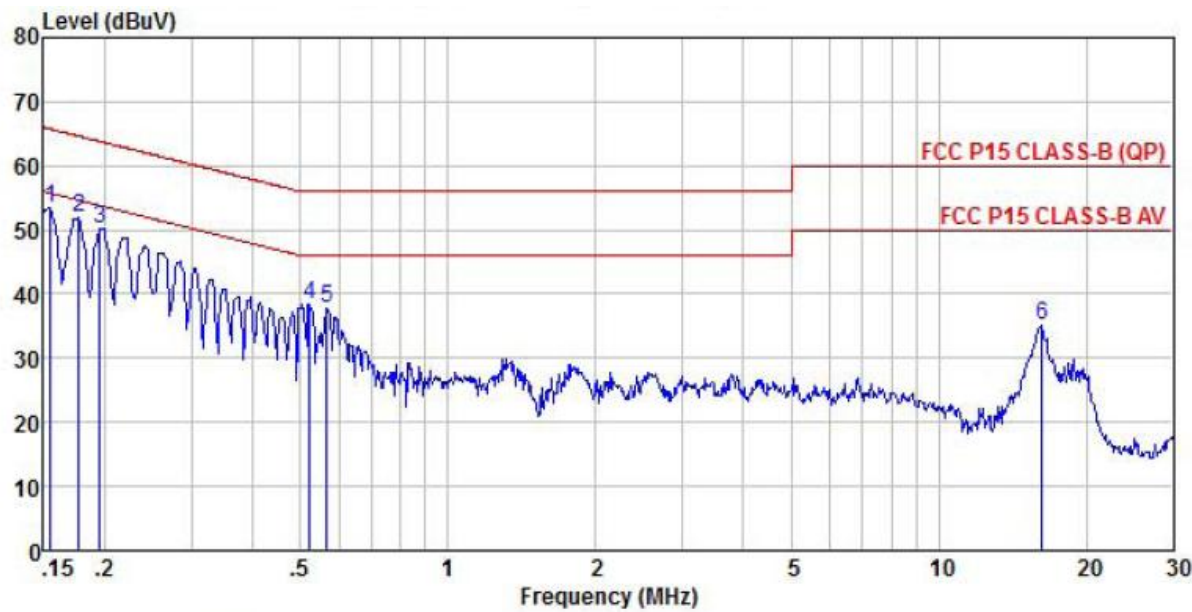
	Freq	ReadAntenna	Cable	Preamp		Limit	Over	
		Level	Factor	Loss	Factor	Level	Line	Limit
	MHz	dBuV	dB/m	dB	dB	dBuV/m	dBuV/m	dB
1	0.16	38.41	10.28	0.09	0.00	48.78	65.30	-16.52
2 pk	0.39	32.79	10.42	0.14	0.00	43.35	57.99	-14.64
3 av	0.53	19.65	10.40	0.10	0.00	30.15	46.00	-15.85
4 pp	0.53	32.22	10.40	0.10	0.00	42.72	56.00	-13.28
5	0.95	30.61	10.31	0.14	0.00	41.06	56.00	-14.94
6	1.53	28.94	10.31	0.15	0.00	39.40	56.00	-16.60
7	16.31	31.25	10.51	0.11	0.00	41.87	60.00	-18.13



Site : shielded room 3
Condition : FCC P15 CLASS-B (QP) ENV216(L)-20120730 LINE
EUT : Coolpad Flo
Model Name : Coolpad 7560T
Temp/Humi : 23 °C / 55%
Power Rating: AC 120V/60Hz
Mode : WIFI 11g
Memo :

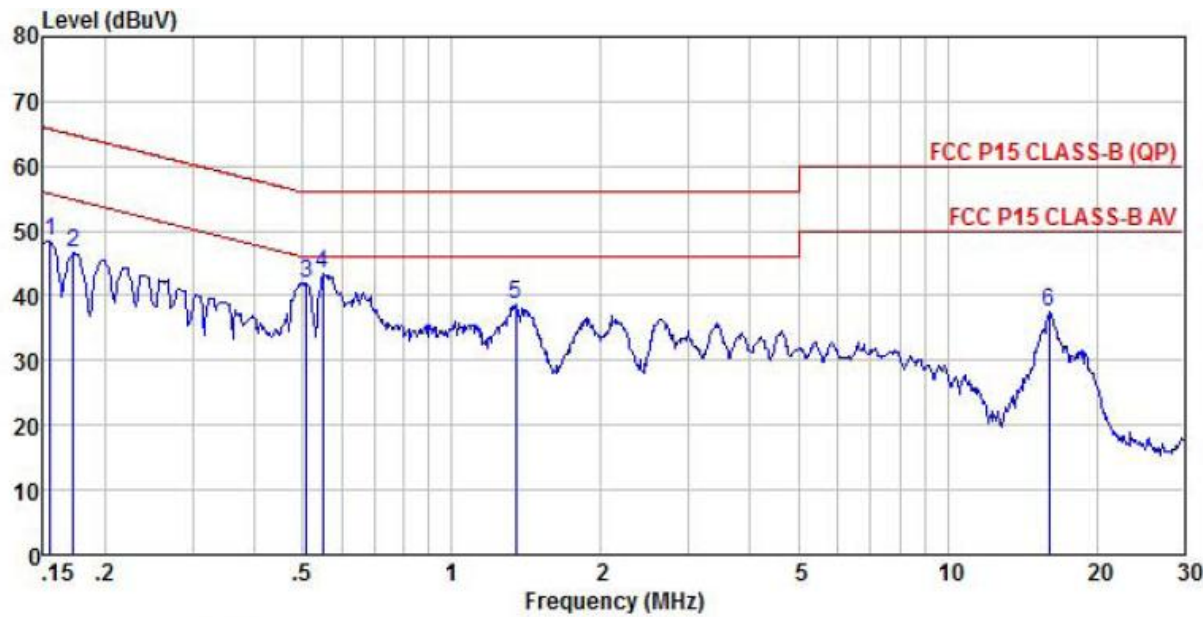
	Freq	ReadAntenna Level	Antenna Factor	Cable Loss	Preamp Factor	Level	Limit Line	Over Limit	Remark
	MHz	dBuV	dB/m	dB	dB	dBuV/m	dBuV/m	dB	
1	0.15	35.75	10.38	0.09	0.00	46.22	65.74	-19.52	Peak
2	0.18	33.81	10.53	0.23	0.00	44.57	64.64	-20.07	Peak
3	0.20	32.37	10.42	0.22	0.00	43.01	63.45	-20.44	Peak
4	0.23	31.39	10.44	0.22	0.00	42.05	62.57	-20.52	Peak
5 pp	0.52	29.07	10.54	0.10	0.00	39.71	56.00	-16.29	Peak
6	16.23	28.28	10.52	0.11	0.00	38.91	60.00	-21.09	Peak

802.11n



Site : chamber
Condition : FCC P15 CLASS-B (QP) ENV216(L)-20120730 LINE
EUT : Coolpad Flo
Model Name : Coolpad 7560T
Temp/Humi : 23 °C / 55%
Power Rating: AC 120V/60Hz
Mode : WIFI 11n
Memo :

	Freq	ReadAntenna	Cable	Preamp		Limit	Over	
	Level	Factor	Loss	Factor	Level	Line	Limit	Remark
	MHz	dBuV	dB/m	dB	dB	dBuV/m	dBuV/m	dB
1 pp	0.15	43.00	10.38	0.09	0.00	53.47	65.74	-12.27 Peak
2	0.18	41.10	10.53	0.23	0.00	51.86	64.64	-12.78 Peak
3	0.20	39.60	10.44	0.23	0.00	50.27	63.80	-13.53 Peak
4	0.52	27.87	10.54	0.10	0.00	38.51	56.00	-17.49 Peak
5	0.57	27.06	10.50	0.11	0.00	37.67	56.00	-18.33 Peak
6	16.23	24.62	10.52	0.11	0.00	35.25	60.00	-24.75 Peak



Site : chamber
Condition : FCC P15 CLASS-B (QP) ENV216(N)-20120730 NEUTRAL
EUT : Coolpad Flo
Model Name : Coolpad 7560T
Temp/Humi : 23 °C / 55%
Power Rating: AC 120V/60Hz
Mode : WIFI 11n
Memo :

	Freq	ReadAntenna Level	Antenna Factor	Cable Loss	Preamplifier Factor	Level	Limit Line	Over Limit	Remark
	MHz	dBuV	dB/m	dB	dB	dBuV/m	dBuV/m	dB	
1	0.15	38.04	10.29	0.09	0.00	48.42	65.74	-17.32	Peak
2	0.17	36.21	10.26	0.09	0.00	46.56	64.86	-18.30	Peak
3	0.51	31.56	10.41	0.10	0.00	42.07	56.00	-13.93	Peak
4 pp	0.55	32.88	10.39	0.11	0.00	43.38	56.00	-12.62	Peak
5	1.34	28.31	10.31	0.14	0.00	38.76	56.00	-17.24	Peak
6	16.05	26.91	10.53	0.11	0.00	37.55	60.00	-22.45	Peak

APPENDIX 1 PHOTOGRAPHS OF TEST SETUP

Please refer to the file named “R38YL7560T_Part15C Setup Photos”.

APPENDIX 2 PHOTOGRAPHS OF EUT

Please refer to the two files named “R38YL560T_External Photos” and
“R38YL560T_INternal Photos”.

-----End of the report-----