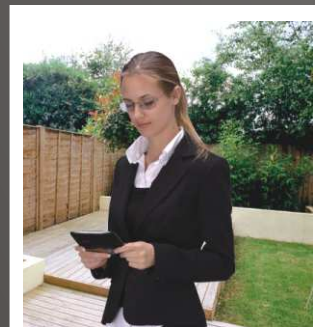




**The World's First Palm-Sized PC With  
High-Speed Internet**

"Stay in control not out  
of touch, work the way  
you want to work....."



**USER  
MANUAL**

# The PC Edge

---

## User Manual

---

### Radio Frequency related information

#### CE:

The equipment has been tested and found to comply with the essential requirements and other relevant provisions of Directive 1999/5/EC.

The Declaration of Conformity related to this product, and any other compliance matters can be obtained by sending a request to [compliance@datawind.com](mailto:compliance@datawind.com).

These limits are designed to provide reasonable protection against harmful interference in a residential installation. This equipment generates, uses, and can radiate radiofrequency energy and, if not installed and used in accordance with the instruction manual, may cause harmful interference to radiocommunications. However, there is no guarantee that interference will not occur in a particular installation. If this equipment does cause harmful interference to radio or television reception, which can be determined by turning the equipment off and on, the user is encouraged to try to correct the interference by one or more of the following measures: A) Reorient or relocate the receiving antenna. B) Increase the separation between the equipment and receiver. C) Connect the equipment into an outlet on a circuit different from that to which the receiver is connected. D) Consult the dealer or an experienced technician for help.

#### FCC:

This equipment has been tested and found to comply with the limits for a Class B digital device, pursuant to part 15 of the FCC Rules.

This device complies with part 15 of the FCC Rules. Operation is subject to the following two conditions: (1) This device may not cause harmful interference, and (2) this device must accept any interference received, including interference that may cause undesired operation. A separation distance of at least 20 centimeters should be maintained between the transmitter's radiating structure(s) and the body of the user or nearby persons.

#### CAUTION:

Changes or modifications to this equipment not expressly approved by DataWind for compliance could void the user's authority to operate this equipment.

# The PC Edge

THIS USER MANUAL IS AVAILABLE ONLINE AT:  
[WWW.THEPCEDGE.COM/USER\\_MANUAL](http://WWW.THEPCEDGE.COM/USER_MANUAL)

## User Manual

### Contents

Preface- About This Manual. . . . .	4
<b>Chapter 1: The PC Edge Introduction. . . . .</b>	<b>5</b>
Introduction. . . . .	5
Device Features. . . . .	5
<b>Chapter 2: Important Safety Information. . . . .</b>	<b>7</b>
Care and Maintenance. . . . .	7
Operating Environment. . . . .	8
<b>Chapter 3: Getting Started. . . . .</b>	<b>12</b>
Box Contents. . . . .	12
External Features. . . . .	12
Getting Started. . . . .	13
Before Initiating. . . . .	13
Function Keys. . . . .	13
Charging the Battery. . . . .	13
Quick Start. . . . .	13
Navigating on the Internet. . . . .	14
<b>Chapter 4: General Operation. . . . .</b>	<b>15</b>
Mouse Navigation & Clicking. . . . .	15
To Go to a New Web Site. . . . .	15
How to Enter Text. . . . .	17
Using "TAB" on the Keyboard. . . . .	17
Deleting Text. . . . .	17
End of Page Scroll. . . . .	17
Hourglass Feedback. . . . .	17
Pop-Up Advertisement. . . . .	17
Resetting your The PC Edge. . . . .	17
<b>Chapter 5: The Keyboard and Shortcut Keys. . . . .</b>	<b>18</b>
On/Off. . . . .	18
Escape. . . . .	18
Zoom. . . . .	18
Contrast / Brightness. . . . .	18
Home. . . . .	18
Search. . . . .	18
E-mail. . . . .	18
Settings. . . . .	19
GO. . . . .	19
GPS. . . . .	19
Refresh. . . . .	19
Pop-up Closer/Blocker. . . . .	19
Back/Forward. . . . .	19
Text Insert. . . . .	19

<b>Chapter 6: Registration and Account Information.</b>	21
User Registration	21
Device Replacement	21
User Account Information.	21
<b>Chapter 7: Favourites, Account Settings and Device Settings</b>	22
Adding and Organising Favourites on the Device	22
Account Settings	26
Device Settings	26
<b>Chapter 8: Email, Instant Messaging and Organizer</b>	27
Signing into Hotmail	28
Signing into Yahoo Mail	28
How to Access Web-based Email	28
POP MAIL	29
Instant Messaging	29
Yahoo Web Messenger	29
AOL Messenger	30
Using Yahoo Calendar as an Organizer	30
 <b>Chapter 9: Remote Access PC.</b>	 32
 <b>Chapter 10: Features and Utilities.</b>	 40
Chat	40
E-Fax.	40
Chat	40
Sports.	40
Weather.	40
Online Storage.	40
Thinkfree Office.	41
One Touch Email.	41
 <b>Chapter 11: FAQ'S - Frequently Asked Questions:</b>	 42

# User Manual for The PC Edge

## Preface - About This Manual

This User Manual shows you how to operate The PC Edge. Its goal is to familiarize you with all aspects of handheld web browsing device and is a reference guide for any questions arise in the future. To accomplish this, the user manual describes all key features of The PC Edge.

### Chapter 1

Introduction - provides you with an overview of The PC Edge and describes its features and specifications.

### Chapter 2

Important Safety Information - explains basic care and maintenance of The PC Edge and describes safe operation.

### Chapter 3

Setup & Quick Start - helps the user to setup The PC Edge and start browsing.

### Chapter 4

Registration & Account Information - Initial process of registering the device and service.

### Chapter 5

Favourites-Setting-up and maintaining quick links to sites visited often.

### Chapter 6

General Operation- explains the browsing experience in more detail, including various productivity tips.

### Chapter 7

Email and Organizer- detailed instructions on how to use Email and organizer functionalities.

### Chapter 8

Remote Access PC- explains the advantages of remotely accessing your PC.

### Chapter 9

Features- briefs on various useful links on The PC Edge home page.

### Chapter 10

Warranty- explains the warranty coverage and terms of use.

### Chapter 11

FAQ's - Frequently Asked Questions

**To get support, you can reach us by any of the following means:**

Website: [www.thepcedge.com](http://www.thepcedge.com), Email: [support@thepcedge.com](mailto:support@thepcedge.com)

US Nationwide Technical Support: 1-866-439-3343 (EDGE)

# Chapter 1

## The PC Edge Introduction

---

### For the Consumer:

Email, chat, instant-messaging, surfing the web — everything that you can do on your desktop is now available in a mobile environment.

- Capture critical information anywhere at a lower cost.
- Improve business processes to productivity via timely access to information anywhere
- Reduce risk by leveraging existing systems and industry standards (internet support)
- Easy to use & Easy to administer
- Quick development & seamless enterprise synchronization
- Performance & scalability
- Full business data access
- Anytime, anywhere cost-effective data access

The PC Edge delivers the only true, fast, full-scale wireless Internet browsing experience using the existing cellular network's bandwidth.

### Device Features:

The PC Edge web access device is very user friendly. This self-explanatory user manual will help you acquaint yourself with all the basic and **advanced features** of The PC Edge and find some quick shortcuts.

### Simple Web:

Its simple web interface takes advantage of the many years of desktop-web experience of most users.

### Real internet:

The PC Edge is the only product that offers the real Internet to a mobile user in a fast and economical way.

### Image quality:

Intended for web access, it provides a full 640 pixel wide screen, which is 2 to 4 times higher resolution than those offered by other PDAs.

### Typing:

Further increasing convenience, The PC Edge offers a full QWERTY THUMB keyboard for easy data entry and a simple to use Mouse for scrolling.

### Full HTML compatibility:

The real Internet with full graphics, contents and original layout.

### **Faster than most modems:**

While current cellular networks deliver web pages in 23 seconds to 3 minutes, The PC Edge's 10X speed acceleration means most pages are downloaded in less than 7 seconds. At this speed it is even faster than many home internet connections.

### **Compatibility with current cell phone infrastructure:**

Delivering today, the promise of future networks. The PC Edge is faster in surfing websites than many 3G devices out in the market today.

### **Price/Performance:**

Most PDA's are not intended for web-access. At a similar price to The PC Edge device, others offer only a simple organizer at half the screen width. The cost of upgrading most PDA's to become wireless is generally more than that of a full featured The PC Edge Factoring in the price of using alternative devices to surf the web, which can be prohibitively expensive compared with FREE usage which comes with The PC Edge makes this even a greater value.

### **FOR THE ENTERPRISE:**

Corporate and institutional intranets benefit by allowing their mobile work forces to efficiently access their websites.

### **Ease of use:**

Since The PC Edge solution is easy to use AND the only means of accessing the web without re-formatting for a wireless environment, it is the ideal tool for major corporate sites.

### **No additional formatting needed:**

The PC Edge can be used as part of existing web-based intranets without additional formatting or site modifications. The mobile workforce can take advantage of the familiarity of their intranet on our wireless device the same as they see it on their desktop computers.

### **Easy customization:**

Implementation of our wireless solution for corporate enterprise applications requires only setting their site as the web-entry portal.

### **No additional costs:**

Business currently need to make heavy investments in reformatting content for Wireless formats. This additional cost is eliminated by the use of The PC Edge's. The breadth of applications for The PC Edge is as wide-ranging as the complete Internet solution.

# Chapter 2

## Important Safety Information

---

### Care and Maintenance:

#### Things to “Do” and “Not to do” while using your The PC Edge:

Your The PC Edge is a product of superior design and craftsmanship and should be treated with care. The suggestions below will help you to fulfill any warranty obligations and allow you to enjoy this product for many years.

When using your The PC Edge, charger, or any accessory:

#### Things **To DO**



- ✓ Keep it and all its parts and accessories **out of small children's reach**.
- ✓ Keep it **Dry**. Precipitation, humidity and liquids contain minerals that will corrode electronic circuits.
- ✓ Use only the supplied or, an **Approved** replacement antenna.
- ✓ Unauthorized antennas, modifications or attachments could **Damage** The PC Edge and may violate regulations governing radio devices & void the mtrs warranty.
- ✓ If The PC Edge, charger, or any accessory is not working properly, take it to your nearest **Qualified** service facility.

When using your The PC Edge, charger, or any accessory:

#### Things **Not To DO**



- ✗ Use or store it in **Dusty**, dirty areas as its moving parts can be damaged.
- ✗ Store it in **Hot** areas. High temperatures can shorten the life of electronic devices, damage batteries, and warp or melt certain plastics.
- ✗ Store it in **Cold** areas. When The PC Edge warms up (to its normal operating temperature), moisture can form inside The PC Edge, which may damage The PC Edge's electronic circuit boards.
- ✗ Attempt to **Open** it. Non-expert handling of the device may damage it.
- ✗ **Drop**, knock or shake it. Rough handling can break internal circuit boards.
- ✗ Use harsh **Chemicals**, cleaning solvents or strong detergents to clean it. Wipe it with a soft cloth slightly dampened in a mild soap-and-water solution.
- ✗ **Paint** it. Paint can clog the device's moving parts and prevent proper operation.



## Operating Environment:

Please remember to follow regulations governing the use of The PC Edge. Always turn **Off** your device whenever it is **Forbidden** to use it, or when it may cause interference or danger ( i.e) hospitals/aircraft/petrol stations etc.

All safety laws and regulations pertaining to the use of cell phones and two-way radio's will probably apply to your use of The PC Edge. We advise you to follow these **Laws and Regulations** when using the device.

Places where YOU should **Not** use your The PC Edge:-

Care should be taken to avoid using your The PC Edge in any environment in which your total attention is required, such as when **Driving** a vehicle or operating **Heavy machinery**.

Switch off The PC Edge when in an **Aircraft**. The use of the device in an aircraft may be dangerous to the operation of the aircraft which may disrupt the network, and may be illegal. Failure to observe all these instructions will void the Limited Warranty, and may lead to suspension or denial of services to the offender, or legal action or both.

Turn off The PC Edge when in an area with a **potentially explosive atmosphere** and follow all signs and instructions. Any kind of spark in such sensitive areas could cause an explosion or a fire resulting in physical injury or even death.

There is a chance that certain potentially explosive area might not be always clearly marked. Some examples are fueling areas, such as gasoline or petrol stations, below deck on boats, fuel or chemical transfer or storage facilities, vehicles using liquefied petroleum gas (such as propane or butane), areas where the air contains chemicals or particles, such as grain, dust, or metal powders, and any other area where you are normally advised to turn off your vehicle engine.

**Health Care facilities:** Remember to turn Off The PC Edge in Health Care facilities, especially when there are any regulations posted. Hospitals or Health care facilities may be using equipments that might be sensitive to RF.

Remember to observe restrictions on the use of **Radio equipment** in fuel depots (fuel storage and distribution areas), chemical plants or where blasting operations are in progress.

Operation of any **Radio transmitting equipment**, including The PC Edge, could interfere with the functionality of insufficiently protected medical devices. Consult a physician or the manufacturer of the medical device, if you have any questions. Other electronic devices may also be subject to interference.

If you are using a **Pacemaker**, it is in your best interests to consult with your physician or the manufacturer of your pacemaker, if you have any questions regarding the effect of RF signals on your pacemaker. If you are using The PC Edge and have a pacemaker, please make it a point to verify that you are using The PC Edge device in accordance with the safety requirements of your pacemaker.

## Radio Interference Information:

The equipment has been tested and found to comply with the essential requirements and other relevant provisions of Directive 1999/ 5/EC **CE 0168**. These limits are designed to provide reasonable protection against harmful interference in a residential installations.

It is in compliant with the **European Norm for Product standard (CE)** to demonstrate the compliance of mobile phones with the basic restrictions related to human exposure to electromagnetic fields.

The PC Edge device is designed and manufactured not to exceed the emission limits for exposure to radio frequency (RF) energy set by the Federal Communications Commission (**FCC**) of the U.S Government, Industry Canada of the Canadian Government (**IC**) and recommended by The Council of the **European Union (EU)**.

This equipment generates uses and can radiate **Radio frequency energy**. If not installed and used in accordance with the user manual, may cause harmful interference to radio communications. However, there is no guarantee that interference will not occur in a particular installation.

The PC Edge **meets Government Requirements** for Exposure to Radio Waves. It is a radio transmitter and receiver and is designed and manufactured not to exceed the emission limits for exposure to radio frequency (RF) energy set by the Federal Communications Commission (FCC) of the U.S. Government, Industry Canada of the Canadian Government (IC) & The Council of European Union (EU).

These limits are part of comprehensive guidelines and establish **permitted levels of RF** energy for the general population. The guidelines are based on standards that were developed by independent scientific organizations through periodic and thorough evaluation of scientific studies. The standards include a substantial safety margin designed to assure the safety of all persons, regardless of age and health.

If this equipment does cause harmful interference to radio or television reception, which can be determined by turning the equipment **Off** and **On**, the user is encouraged to try to correct the interference by one or more of the following measures:

- ◆ Change the orientation or try to relocate the receiving antenna.
- ◆ Increase the separation between the equipment and receiver.
- ◆ Connect the equipment into an outlet on a circuit different from that to which the receiver is connected.
- ◆ Consult the dealer, manufacturer or an experienced authorised technician for help.

**To maintain compliance** with **FCC, IC and EU, RF** exposure guidelines while using The PC Edge device, use only accessories that are supplied or approved by the manufacturer.

**Use of accessories** that are not expressly approved by Edgetech International Ltd. might violate **FCC, IC and EU, RF** exposure guidelines and might void any **warranty** applicable to The PC Edge device.

**Changes or modifications** to this equipment not expressly approved by Edgetech International Ltd. for compliance could **void** the user's authority to operate this equipment.

## **Additional Safety Guidelines**

### **Children:**

The PC Edge and its accessories may contain small parts. For safety purpose, please keep them out of the reach of small children.

### **Networks:**

At times, to transmit data files or messages, The PC Edge may require a quality connection to the network. In some surroundings, transmission of data files or messages may be delayed until such a connection is available.

### **Hearing Aids:**

Some parts of the device may be magnetic in nature. Metallic materials may be attracted to the device. As a precaution, persons with a hearing aid should not hold the device close to the ear with the hearing aid.

### **Magnets:**

Avoid placing credit cards or other magnetic storage media near the device because information stored on them may be erased.

### **Local Regulations:**

There is a chance that in some countries there may be some restrictions on using Bluetooth® enabled and wireless devices with or without encryption software. Please check with your local authorities.

### **Sharp objects and liquids:**

Never try to push objects of any kind into The PC Edge device or device accessories through openings. Such actions might cause a short circuit, a fire or electric shock.

### **Water/Spills:**

Avoid using The PC Edge device or accessories near water e.g. near a shower or a sink or in a swimming pool). Do not spill liquids of any kind on The PC Edge device or accessories.

### **Equilibrium:**

Avoid placing The PC Edge device or any of it's accessories on an unstable surface. There is a chance it may fall and cause an injury or cause serious damage to The PC Edge device or device accessory.

### **Stress:**

It is advised that while using The PC Edge device, take frequent breaks. If you experience any kind of fatigue, discomfort in your neck, shoulders, arms, wrists, hands (including thumbs and fingers), or other parts of the body when using The PC Edge device, stop using it immediately. If discomfort persists, consult a standard physician.

### **Electrical Safety:**

Do not use any other charger to charge your The PC Edge other than the charger provided with your The PC Edge standard packaging. Use of any other charger will void the warranty of the device and the charger.

### **Power Cords:**

Always take extra care when using The PC Edge device with any charging accessories, especially while routing the power cord in such a way that it reduces the risk of injury to others e.g. by tripping or choking. Always protect the power cord from being squished or walked on or pinched, particularly at plugs and the point where the power cord connects to The PC Edge.

### **Power Plug:**

To reduce the risk of damage to the cord or the plug, pull the plug rather than the cord when you disconnect the The PC Edge from the wall outlet.

### **Overloading:**

While charging your The PC Edge avoid overloading the wall outlets, extension cords. This might result in a risk of fire or electric shock.

### **Extreme weather:**

Make sure to unplug charging accessories during lightning storms or when unused for long periods of time.

## Safely Disposing Device:



The PC Edge should not be placed in household waste bins. Please check local regulations for information on the disposal of electronic products in your area.

# Chapter 3

## Getting Started

---

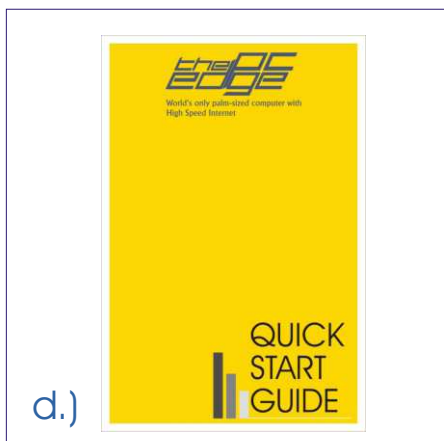
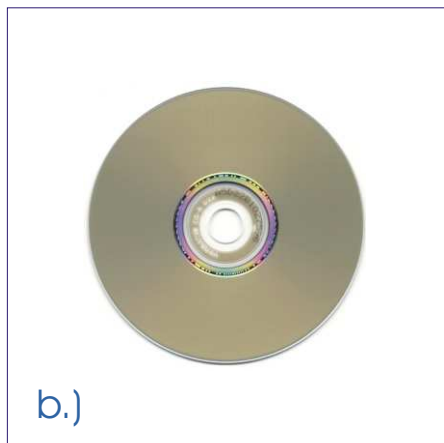
### Box Contents

The first thing to do is to make sure you have everything you need to set up a complete system. Take all the items out of the packing boxes and use the following as a checklist:

If any item is missing, please contact customer service, with your The PC Edge serial number, immediately at:

1-866-439-3343(EDGE) or email: [support@thepcedge.com](mailto:support@thepcedge.com)

- |                       |   |          |
|-----------------------|---|----------|
| a. The PC Edge Device | b. CD with Electronic User Manual & Usage Video | c. Pouch |
| d. Quick Start Guide  | e. Power Charger                                |          |



## Charging the Battery:

Before you can initiate your true-wireless-web-experience using The PC Edge, there are some very **important tasks** that you must perform:

1. **Charge** the battery.
2. **Activate** your service / **Register** with THE PC EDGE.
3. Learn how to use the **Keyboard (Chapter 5)**

After these tasks are performed; you are well on your way to have the true Internet experience literally in the palm of your hands.

The battery that has been installed in The PC Edge will allow you to perform any of your online functions for over **Five** straight hours. Charging time should be **4 hours** for the unit. Also, the battery installed is lithium based, which means that it is possible to recharge the battery at any time without altering the lifetime of the battery. Still it is recommended that you let your battery Discharge fully before recharging it again.

### In order to charge the device correctly:

1. Connect the charger on your wall socket
2. Proceed to plug the device into the left hand of The PC Edge.

It should now be possible to see on the top right hand corner of the screen, the battery level. A full bar indicates a fully charged unit.

## QUICK START:

### Navigating On the Internet Using The PC Edge.

Before you start navigating on the Internet using The PC Edge, please take some time to go through the Keyboard description (Chapter 5) section and familiarise yourself with its proper use and special functions. Remember, that standard Keyboard and certain Mouse functions have been modified/adapted to make this web-browsing experience as realistic and unaltered as possible.

Turn On your The PC Edge and follow the appropriate instructions on Screen.

If necessary, contrast/brightness of the screen can be decreased or increased by pressing this button and then using the Navigation keys to increase or decrease the brightness. By holding the Shift down and again using the Mouse Navigation keys, the contrast can be increased or decreased similarly.

Press the Mouse Navigation & Clicking key (located in the middle of the scroll key) to initiate the connection. There is one Mouse Click, located at in the center of the Navigation Control. And on the left hand side of the shift button. Please refer to Chapter 5, for a complete Keyboard map and definitions.



Power On/Off  
Button



Brightness  
& Contrast



Mouse  
Navigation



Extra Mouse Click

Once the connection is initiated, on the top left hand corner of the device there should be information regarding the status of the connection.

After only a few seconds you should be able to see on your screen The PC Edge Home page (or the tutorial / registration page if you have not registered yet).

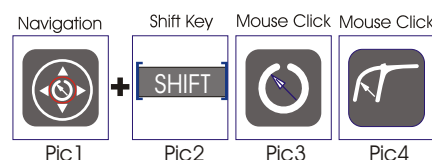


# Chapter 4

## General Operations

### Mouse Navigation & Clicking & Keyboard operation

The Navigation button - Pic 1 is used for mouse control and to scroll. Hold the SHIFT key – Pic 2 while using the directional arrow keys to enter scroll mode. To Click, press the mouse-click button – Pic 3. There is one mouse click located in the center of the navigation control (Pic 1 - encircled in red) and another located to the left of the SHIFT



#### To go to a new Web Site

The browser is keyword enabled. For most sites with the '.com' ending, **you do not need 'www.'** at the start or **' .com'** at the end. You do not need to go to the address bar, to type in the address of a new website just type the keyword and it will appear at the top of the screen



#### Step 1: Click On Go-To Button

Make sure that there is no text on the top left hand side of the toolbar. If there is text or any characters, delete them by pressing the delete button. Your current URL will appear in a URL box under the Toolbar on the top left. Then click on the Go-To button.



#### Step 2: Type The Address

Type in the address of the website that you want to visit. It will replace the current URL in the URL box. Note that the browser is keyword enabled. For most sites ending with .com you do not have to type either the www or the .com. Therefore, "yahoo" is all that you would need to type if you wanted to visit **www.yahoo.com**.



**Step 3: Click On Go-To Button** Once the URL that you want to visit is listed in the URL box, click on either the Go-To button or the Enter button and your new website will come up onto the screen.



**If you see a pop-up instead, click on 'X' button to close the POP Ups.**

#### Refresh:

The Refresh button is used to refresh a web page. Use this option to reload the contents.



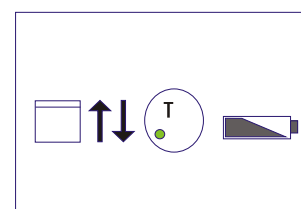
#### Forward / Backward Page:

Allows toggling back and forth between pages visited in the same session of a web page.



#### Text Entry: Batch mode

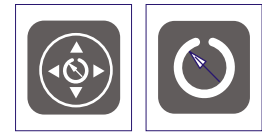
The PC Edge's default for text entry will be Batch Mode. This can be confirmed by the "T" on the top right corner of the screen, as outlined by the Blue circle in the image on the below. In Batch Mode, the text is aggregated at the top left corner of the screen, before being inserted in a text box or before getting a new URL. In this mode, simply start typing, and the text will appear on the top left corner of the screen.





**Step 1:**

To place text in a text box, first ensure that the cursor is in the text box or that text box is highlighted. Use the **Mouse Pointer/Scroll** to position the mouse on the text box and then press the **Mouse Click button**. Wait a few moments and the Cursor will appear in the text box.



Navigation Button &amp; Mouse Pointer Scroll

Mouse Click

**Step 2:**

Type on the device and your typing will appear on the top left corner of the screen.

**Step 3:**

Now press the **text insert** button to insert the text or press '**TAB**' to insert text and move the Cursor to the next text box. A third choice is to press **enter** to insert text and submit.



Text insert button

TAB

ENTER

**Sample Text-Input Exercise:**

To type in a web form, position mouse on text box, and click. Allow a couple of moments for the cursor to appear.

Then use the thumb keyboard to type in the appropriate text (e.g. '**MSFT**'). The text does not instantly appear in the text box, but instead appears on the top-left corner of the screen. After you have composed the text, click on the '**Insert Text**' button to insert text into the text box.

Within a few seconds, the new page will appear. Scroll to the relevant position on the page.



Microsoft Stock On Yahoo

**Deleting Text: Batch Mode****Step 1: Position Cursor**

To delete text from a Text-Box, first place the cursor at the top left corner of the screen

Position the Mouse-Pointer at the end of the text (under the black text line, not in the text box itself). **Shift + Navigation** allows scrolling a page Upwards or downwards.

Then press the **Mouse-Click** button.

Wait a few seconds and the cursor will appear at the required location.



### Step 2: Created 'Back-Spaces'

Press the **space** bar button once and then press the Delete button as many times as the number of characters you need to **delete**.

The '**Back-Space**' symbols will appear on the top-left corner of the screen.

### Step 3: Send 'Back-Spaces'

Now press the text insert button to insert the 'Back-Spaces' in the text box.

Wait a few seconds for the specified characters to be removed.

### Deleting Text: Direct Mode

Place the cursor to the right of the text that needs to be deleted.

Press the Delete-Key for deleting 2 characters, press the  twice.

### End of Page Scroll:

To optimize bandwidth (faster internet speed) usage, The PC Edge downloads one page at a time. While scrolling down on long pages it will stop further scroll until it loads the first page completely. If you are unable to scroll any further, wait a couple of moments for the new window of information to be loaded.

### Hourglass Feedback:

In response to a click, The PC Edge displays an Hourglass as feedback. You can continue browsing after a couple of moments. Do not wait for the Hourglass **to disappear**.

### Pop-Up Advertisement

In certain circumstances, while going to a new site, you may receive a pop-up advertisement.

You can bypass the advertisement by clicking on the **X** key in the function keys.

Or, to completely disable the pop ups, follow these steps:

1. Go to the setting menu, by clicking on the settings icon
2. Go to the "My Settings" tab and uncheck the box next to the "pop up option"

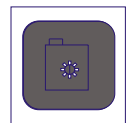
### Resetting your The PC Edge:

In rare occasions, if The PC Edge freezes or stops responding to keyboard commands, scroll dial or the **ON/OFF** switch, you may need to Reset the device. Doing so will return The PC Edge to normal operation. To Reset, very gently insert a metallic pin into the pin-reset hole, which is located just above the **tilda key (~)** on the top left. Do not put too much pressure on the device. Hold the pin down for a couple of seconds and then release gently. You will not loose your personal information or your personal preferences when you reset.

(SPACE) + 



Close Pop Ups & Multiple Layers



Bookmarks and Personal Settings

Pin-reset hole



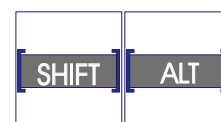
# Chapter 5

## The Keyboard

---

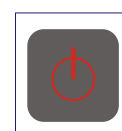
The Keyboard is straight forward. All buttons are as they appear.

1. Holding the SHIFT key will capitalize letters.
2. Holding the ALT key will access characters in blue font.



### On/Off:

When you power it on, it will power up the internal modem and get ready to connect to the internet. The PC Edge also has a built-in safety, which will prevent accidental power-offs. It will ask you if you want to power it off, switch to sleep mode, or cancel and keep surfing.



On/Off

### Escape:

The escape button has the same function as your keyboard escape key. It pulls you out of web pages as well as offline menu options.



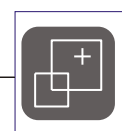
Escape

### Zoom:

This button will allow you to increase or reduce the zoom in 5% increments. Pressing the zoom button with the Up and Down Arrow Keys (marked inside the Red Circle) will Increase or Decrease the zoom.



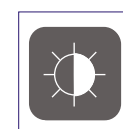
Navigation



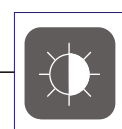
Zoom

### Brightness:

Pressing this button along with the Up and Down Arrow Keys will Increase/Decrease the Brightness.



Brightness



Contrast

### Contrast:

Pressing this button along with the Right and Left Arrow Keys will Increase/Decrease the Brightness.

### Home Page:

Pressing this button at any time will bring you back to The PC Edge home page.

Home



### E-mail:

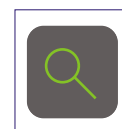
Once this function has been set-up, it will allow you a one-button automatic log-in to your e-mails. More information is available on setting up and using your e-mail in Chapter 8.

E-mail



**Search:** If you have entered text into the toolbar, pressing this button will automatically pull up a search of that text through an internet search engine. If there is no text written into the toolbar, this button will bring you to an internet search engine which will allow you to enter in text and look for whatever you like on the internet.

Search



# Chapter 5

## The Keyboard

### GO:

If there is text in the Toolbar when you press this button, it will act as a URL search for that text. If there is no text in the Toolbar, pressing the GO button will show you what URL you are currently on, as well as offer you a scroll down menu to view recently viewed websites and be able to click on them with your mouse to view them again.

### Refresh:

This button will refresh the website that you are currently viewing and allow for any changes that may have occurred from when you first pulled it up onto your screen.

### Pop-up Closer:

This button when pressed alone will close all extra layers that may be open. There may be pop-up ads or e-mail layers or other instances where you have multiple layers open. Pressing this button will close all but the original window. There may never be less than 1 window open. If you do have more than 2 layers open and you would like to close only the window that you are currently viewing and not any of the others, by holding down the Shift key and pressing the Pop-up closer button, you will close only that window.

### Back and Forward:

These buttons will bring you back to the previously viewed webpage as well as forward again when they are pressed . If there are multiple layers open and you hold the Shift key while pressing these buttons, you can switch back and forth between layers without closing any of them.

### Text Insert:

This button is used to insert text into text boxes while surfing. More details were given regarding how to use this button in Chapter 4.

### Personal Settings:

Pressing this button will allow you to access The PC Edge settings. Included in these settings are the following:

- The ability to disable / enable POP-UP ads
- The ability to disable / enable Animations
- The ability to store Favourite web sites for easy access - These features are covered in more detail in Chapter 7 ([Favourites](#), [Account Settings](#) and [Device Settings](#)).

### GPS:

This button will take you to a map with your current location located by the integrated GPS chip. From that page, you can then find directions to other locations and/or businesses in the area.

### ALT KEY:

Holding down the ALT key will enable all the blue symbols located under the letters between A to L. It also gives access to the character modifiers located under the letters between Z to N.

### The Function-FUNC Keys

Function + T = Text ( Entry Mode)

Function + S = Serial Number



Go



Refresh



Pop-up Closer



Back & Forward



Text Insert



Personal Settings



GPS



ALT

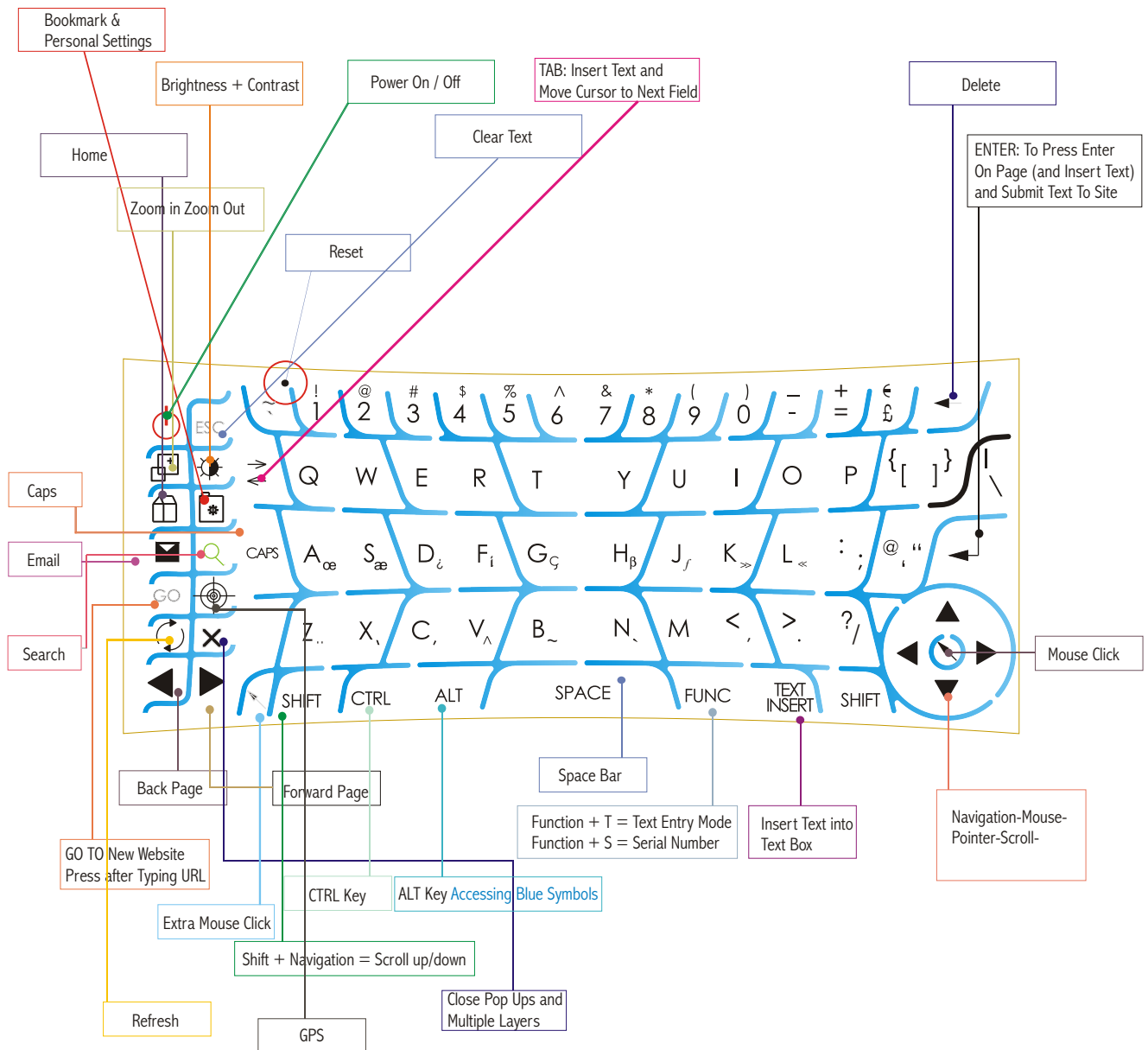


Function + T  
= Text Entry Mode  
Function + S  
= Serial Number

# Chapter 5

## Detailed Keyboard Map

### The Keyboard



# Chapter 6

## Registration & Account Information

---

### Registration

The first time that you turn on The PC Edge, you will be presented with a small tutorial on how to use it, while taking you through the registration process as well.

This tutorial is mandatory for first time users of The PC Edge; it makes it easy for them to understand the features of The PC Edge. It is self explanatory, however please review text entry information provided earlier if this is still unclear.

The first step in starting The PC Edge experience is to activate your The PC Edge. You must call 1-866-439-3343(EDGE) to activate The PC Edge. At this time, you will also have the option of choosing your user name and password.

### Account Information

You can access your account information on The PC Edge by logging in with your Username and Password.

To access your account option, click on the settings Key and then on the My Account – option:

Your account page allows you to monitor account activity and change or update account information. You may also change your password on this screen at any time.

**Note:** The User ID and Password is provided to protect your personal information and your preferences on The PC Edge.

### Device Replacement:

#### Maintain your personal information and settings

If you are replacing your device with a new one, because of loss or repair, you can maintain your personal information and settings (address, billing information, favourites & cookies) by associating the device with your existing account. By inserting the requisite information, your account will be associated with the new device.

# Chapter 7

## Favourites, Account Settings and Device Settings

### Adding and Organising Favourites on the Device

Although, there are many helpful links given on the homepage of your device, you are able to add and manage your own favourites as well. Favourites allow you to store the sites that you would frequently visit and make them easier and much faster to access.

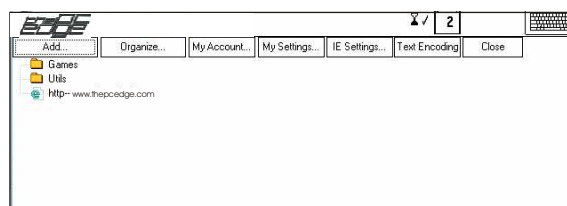
**Adding a Favourite:** If you want to add a page to your favourites, you must first go to the site that you want to add and then go through the process of adding it to your favourites.

For example if you wanted to add “**msn.com**” to your favourites you would go through the following steps:

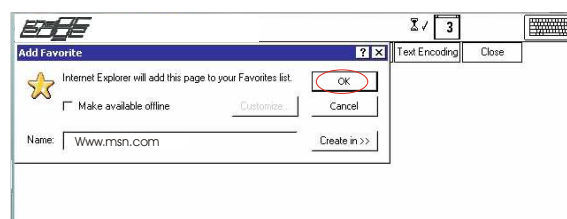
1. Go to the desired website or webpage – in this case **www.msn.com** by **typing** the website name and hitting the **GO** button.



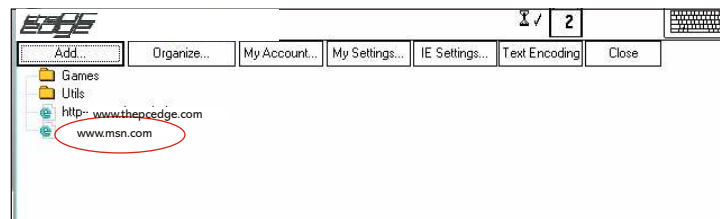
2. Then using your Mouse Pointer, press the settings key  followed by the “Add” button.



3. Using your Mouse pointer click on OK



4. You will see the website now included in your Favourites.



5. The site will automatically be inserted in the text box but you can also change the name, so that it would be easier to remember. For example if you want to check your stocks frequently you could **Rename** "www.nasdaq.com" to "stocks".

6. To change the name, mouse click at the end of the text box. Press backspace/delete as many times as the number of characters you need to delete, and then press Text Insert to insert the backspaces.

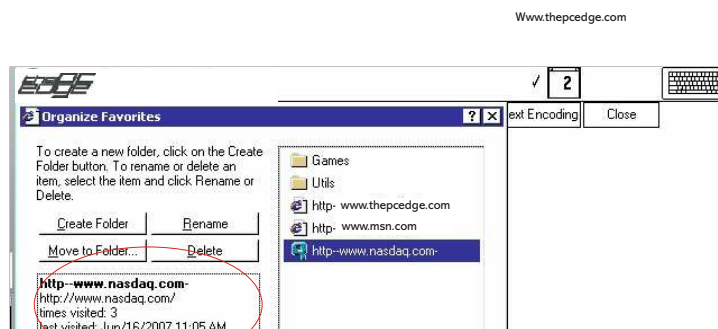


7. Type text to name the page (Note, the text will appear at the top left)

8. Press the text insert button to insert text into the text box.




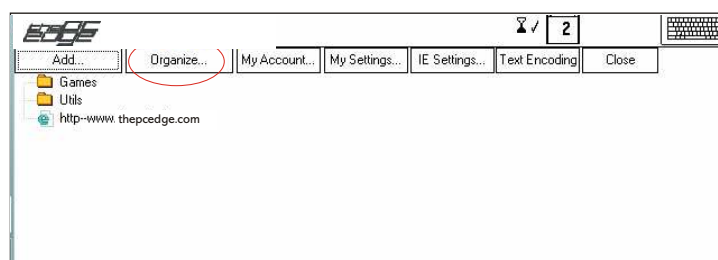
9. Mouse click on OK to add this page. The following screen shows the list of pages added to the favourites.



### Organising Favourites

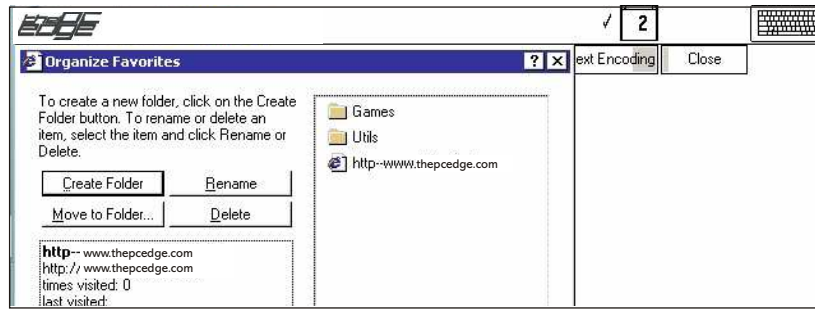
The device allows you to manage and organise your favourites so that they would be stored in a way that is easy for you to use. You can create folders, rename the folder or pages, delete or move to your specific needs.

1. To organise favourites, press the settings button  **Book Mark/Personal Settings**






2. Position the Mouse Pointer/Scroll on Organise, and mouse click to select




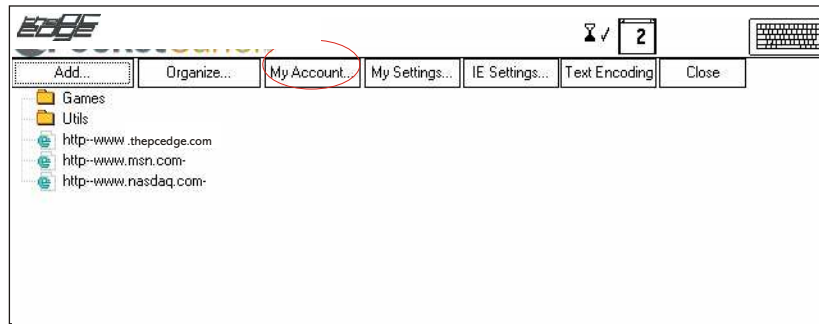
3. Follow the directions on the page in order to create folders, rename, delete or move.

4. Mouse click on the 'X'  in the top right corner to close and go back to favourites.

### My Account / Account Settings:

From the account settings, you can change your password, view and change account information and view account activity.

1. To view or change account settings, select the setting button  .
2. Select My Account option.



2. Position the Mouse Pointer/Scroll on the My Account icon and mouse click to select

3. Place the cursor in the first text box by clicking in the box and type in your Username and Password. If you do not remember your Username and Password, please call the nationwide support line at 1-866-439-3343(EDGE). (The User name and Password are provided to set your personal information your personal preferences on The PC Edge)

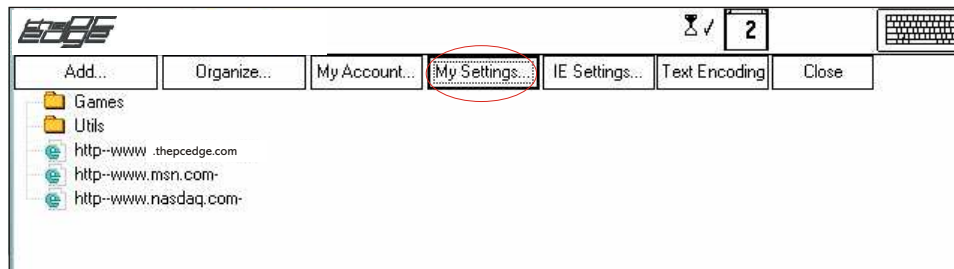
4. From The PC Edge page, you can choose the option that you would like to view or change.

### My Settings:

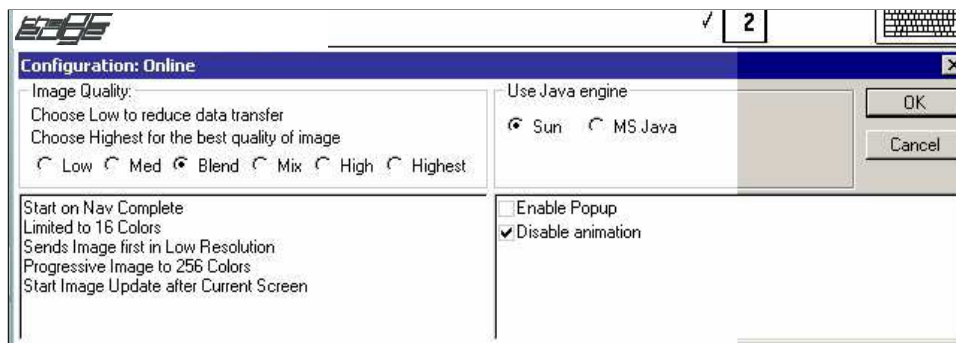
Within the device settings, there are many settings that you can change to ensure your device works with your preferences. Device setting enables the user to edit the setting to their desired preference.

1. To view or change device settings, press the Bookmark 2 personal settings button. 

2. Position the Mouse Pointer/Scroll on the Device Settings icon and mouse click to select. 



Within the device settings, set the Mouse Pointer/Scroll to position and mouse click to select the setting you'd like to change such as, Pop-Ups enable/disable and Java settings.

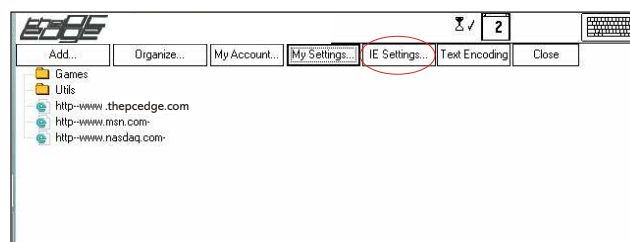


### IE Settings (Internet Explorer setting):

1. This option enables you to customize your IE preferences on The PC Edge:

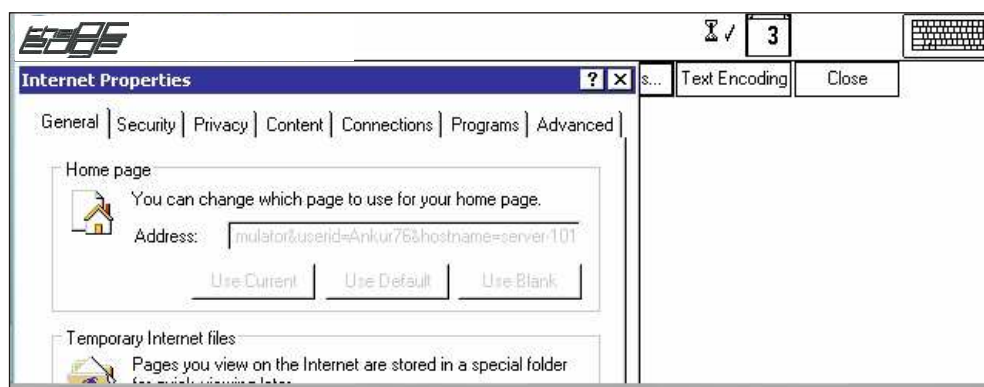
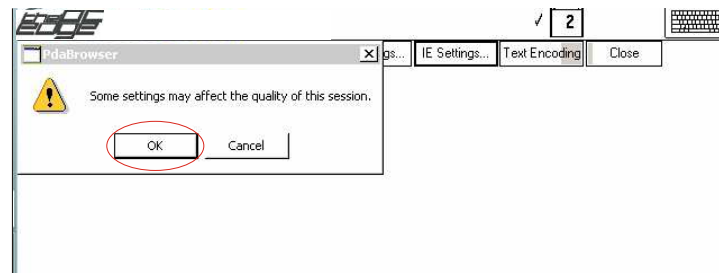
- Delete Temporary Cookies/Files
- Edit Settings
- Clear History

1. To view or change the IE settings, press the Bookmark button,  [Book Mark/Personal Settings](#) and then select the IE Settings option by clicking on top of it with the Mouse Pointer.



If you see the following message (saying that that “some settings may affect the quality of this session”) – select **OK** by clicking on it with the Mouse Pointer:

If you see the following message (saying that that “some settings may affect the quality of this session”) – select **OK** by clicking on it with the Mouse Pointer:



Using the Mouse Pointer, click on the options you’d like to change.

### **Text Coding:**

This option help to increase/decrease the text appearance on the screen

If a user comes across a web-site in non-western characters which is unreadable in whole or in part. In this case the user can manually select the language and character type.

Once this option is selected, select the close button and the changes will appear on The PC Edge screen

Click the “Refresh” key. To reverse back to the original format.

### **Close:**

This option allows you to exit from the settings option on The PC Edge and brings you back to the webpage you were browsing or the Homepage, if you were on the Homepage prior to this session.

# Chapter 8

## Email, Instant Messaging and Organiser

**Setting up** your email is extremely easy with The PC Edge. By simply clicking on the Email link located on your homepage you will be instantly connected to your Email. You also have the option of surfing to web-based e-mails sites like Hotmail, Yahoo mail or G-mail.



After completing the Email set up using the following steps, next time, when you log on to The PC Edge and click on the Email link (encircled above) you will have all your emails ready for you.

### Signing in to E-mail:

The first time that you click on this link, you will see a log-in screen. At this time, you will not have registered any e-mail addresses. You may register any **POP3**, **IMAP** or **HTTP** or web-based e-mail in this e-mail client. You may also store up to **10 different e-mail addresses** here and view them all.

A screenshot of the email login form. It contains fields for 'E-mail address \*:', 'Password \*:', and 'Mail Server Name:'. Below these are radio buttons for 'Protocol' with options: POP3, IMAP, and HTTPMail. There are links for 'Normal Login' and a 'Connect' button.

1. Scroll down by using the Mouse Pointer/Scroll  to the first text box and use the mouse click to select.
2. Type your email address (**Remember: typed text always appears at top left!**) and press "Tab" in order to insert text and move cursor to the next text box.
3. Type your password and press enter to insert text and sign in. If this does not work immediately, use your Mouse Pointer/Scroll to move to and click on the advanced login link.