



CURRENTAUDIO®

Current Audio SoundBars With D-Force Technology



SB80/SB65 Instruction Manual

www.currentaudio.com

©2012 Current Audio LLC
1830 John Towers Avenue El Cajon, CA 92020 Sales 866-927-7181
SB80 RPA 090312

Safety Instructions

1. Read these instructions completely prior to use or hook-up.
2. Keep these instructions for future reference. Record Model Number _____ and Serial Number _____
3. Understand and heed all Warnings.
4. Follow all instructions.
5. Do not use soundbar or subwoofer near water, rain or high moisture.
6. Clean only with a dry cloth. Never use solvents. A microfiber cloth is recommended.
7. Do not block any of the ventilation openings. See Instructions.
8. Do not install near heat sources such as stoves, radiators and amplifiers.
9. Use only with supplied power sources, with polarized power cord.
10. Protect power cord from being walked on or pinched. Do not have cord stretched taut.
11. Use only connections and auxiliary equipment suggested by manufacturer.
12. Use only with an approved cart, stand, tripod, bracket or table specified by the manufacturer.
13. Unplug this system during lightning storms or when left unattended for extended periods.
14. Use an ILS-120 to protect from surges, over/under voltages and lightning strikes.
15. Refer service to qualified service personnel.
16. Allow at least 2" (5 cm) space around units for ventilation.



The exclamation point within an equilateral triangle is intended to alert the user to the presence of important operation or maintenance instructions.



The lightning flash with arrowhead symbol within an equilateral triangle is intended to alert the user to the presence of dangerous voltages within the product's enclosure that may be sufficient magnitude to constitute a risk of electric shock to people.

WARNING

TO REDUCE THE RISK OF ELECTRIC SHOCK, DO NOT EXPOSE THIS EQUIPMENT TO RAIN OR MOISTURE.

CAUTION

TO REDUCE THE RISK OF ELECTRIC SHOCK, DO NOT REMOVE COVER OR BACK. NO USER-SERVICABLE PARTS INSIDE. REFER TO QUALIFIED SERVICE PERSONNEL.

Thank you for purchasing the Current Audio Home Theater SoundBar.
 Please read this manual thoroughly before making any connections or applying AC power. This manual applies to the SB80 and SB65 SoundBar Systems. Follow the instructions in this manual. It will allow you to obtain the maximum performance and listening pleasure from your new amplifier. Please retain this manual to use as a future reference.

Supplied Accessories

The boxes include the following equipment and accessories:

- (1) Multiple speaker SoundBar
- (1) 120VAC to 12VDC power supply
- (1) FM Antenna
- (1) RCA stereo audio cable
- (1) 3.5mm stereo audio cable
- (1) Hand held remote control unit
- (1) 2.4GHz wireless MegaBass unit with power cord
- (1) Wall support mounting bar with screws
- (1) Table Top Mounting feet
- (1) Instruction Manual

Specifications

SoundBar Power SB80/65	60 Watts RMS Ported / 40 Watts RMS Ported. Defined midrange.
Subwoofer SB80/65	80 Watts RMS Powered / 60 Watts Powered
Sound Mode SB80	Selectable 2.0/2.1 with Enhanced DSP Surround Modes
Sound Mode SB65	2.1 for Enhanced DSP listening
Speakers SB80	8 Speakers. 6 2.5" Midrange Drivers and 2 1.25" Tweeters
Speakers SB65	6 Speakers. 4 2.5" Midrange Drivers and 2 1.25" Tweeters
Subwoofer SB80/65	2.4GHz 8" Long Throw Ported Woofer. 6.5" Long Throw.
Bluetooth SB80 Only	Connectivity for iPhone, Android, MP3 and PC
Audio Inputs SB80/65	Digital Optical, Digital Coaxial, RCA, 3.5mm
USB and SD Memory Slot	MP3, USB, HD
Frequency Response	SB80: 37Hz-20 kHz SB65: 40-Hz-20kHz
FM Tuner	Built-in Selectable FM Tuner with Presets
Dimensions WxHxD	SoundBar: SB80: 39 3/4" (1010mm) x 3 1/2" (89mm) x 3 5/16" (84mm) SB65: 39 1/2" (1003mm) x 3 1/2" (89mm) x 3 5/16" (84mm)
Dim MegaBass SB65	WxHxD 16 3/8" (416mm) x 7 7/8" (200mm) x 13" (330mm)
Dim MegaBass SB80	WxHxD 17 1/8" (435mm) x 8 11/16" (221mm) x 14 1/4" (362mm)
Weight SoundBars Subwoofer	9 lbs (4.08kg) SB80 21 lbs (9.5kg) SB65 17 lbs (7.7kg)

Soundbar SB80 and SB65 by Current Audio

The SB80 and SB65 SoundBar describes the latest digital technology in amplified speaker sound bars with a powerful wireless amplified MegaBass subwoofer by Current Audio. The powerful subwoofer can be located anywhere in the room. This is the perfect Home Theater System with a wide sound stage.

The system comes with a handheld remote to control power, switch inputs and adjust sound fields. You may also use the touch screen buttons on the SoundBar.

The slim depth and sleek design blends with all flat LED/LCD TV models.

Features and Connections for SoundBar (see photo on next page)

Rear Panel SoundBar

1. **Power Switch**-Rear panel switch to cut power for service or hook-up.
2. **Input Power Jack**-Connect the 12VDC power supply here.
3. **Line Inputs**-Three input methods are provided on the back panel. Digital Optical or Coaxial or standard analog RCA input from TV.
4. **AUX IN**-A standard 3.5mm audio jack for MP3, computers or mobile devices.
5. **FM Antenna**-Connect the supplied FM antenna to play FM radio.

Front and Side Panel SoundBar

6. **Remote Control Receive Window**-Aim the Remote to this area to control or change the functions of the system.
7. **LCD Display**-The Digital read out gives status of the system functions and will automatically dim after 60 seconds. Press any button on the remote to turn the display on.
8. **Sound Source Touch Button**-Switches between FM radio, Aux, USB, SD card, TV, Optical or Coaxial modes.
9. **Volume Up/Down Touch Buttons**-Manually control volume.
10. **Power Touch Button**-Place system in Standby OFF mode or ON mode.
11. **USB-Port-2.0 Input** for MP3 or WMA format music files.
12. **SD Memory Card Port**-Input for MP3 and WMA format music files.
13. **Mounts**-packed with each amp is an accessory pack that include brackets allowing the SoundBar to be table top or wall mounted.

Subwoofer

14. **Input power Jack**-Connect 110VAC 2 conductor power cord here.
15. **Power Mode**-Power ON or OFF
16. **Match Button and Status LED**-Used to sync the SoundBar with the MegaBass for control of the subwoofer.

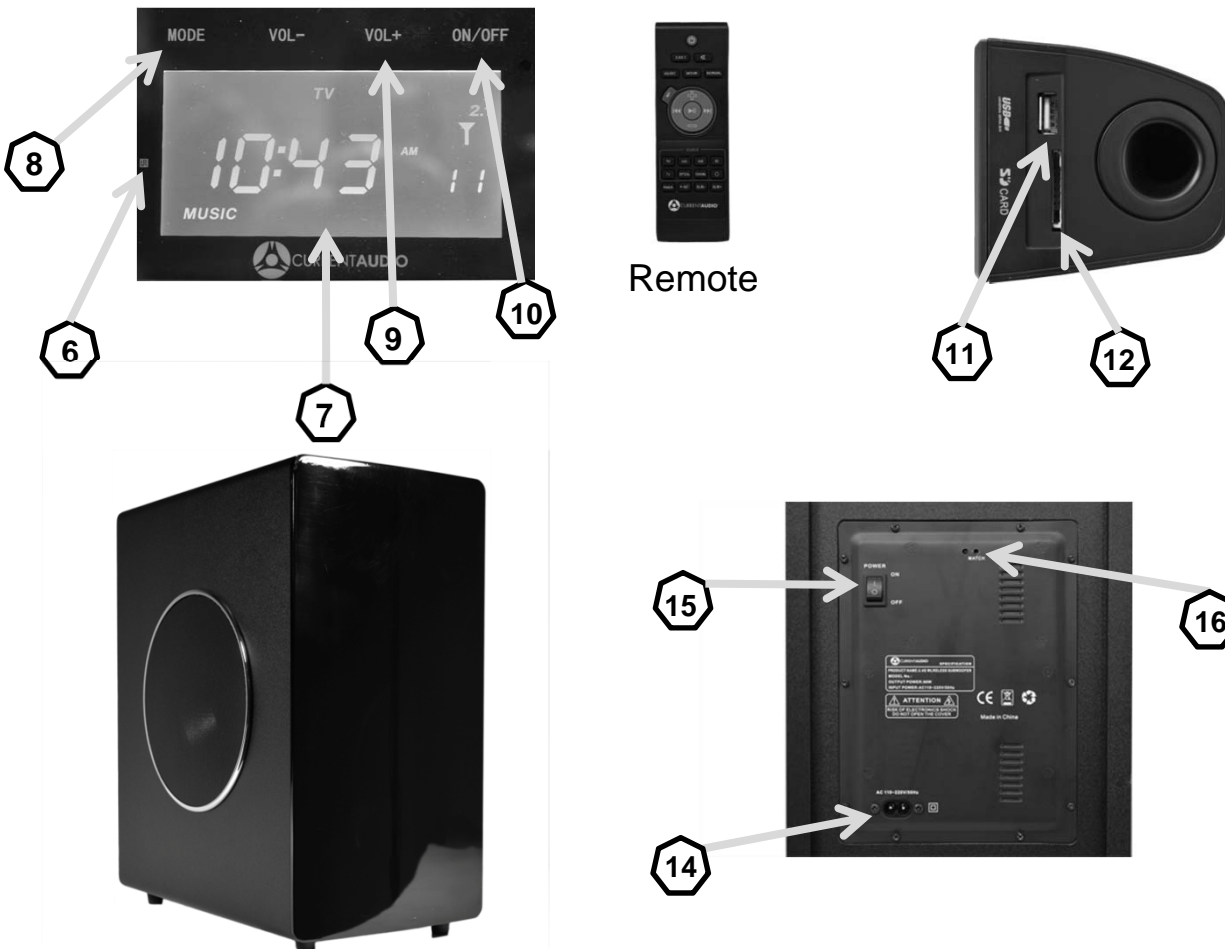
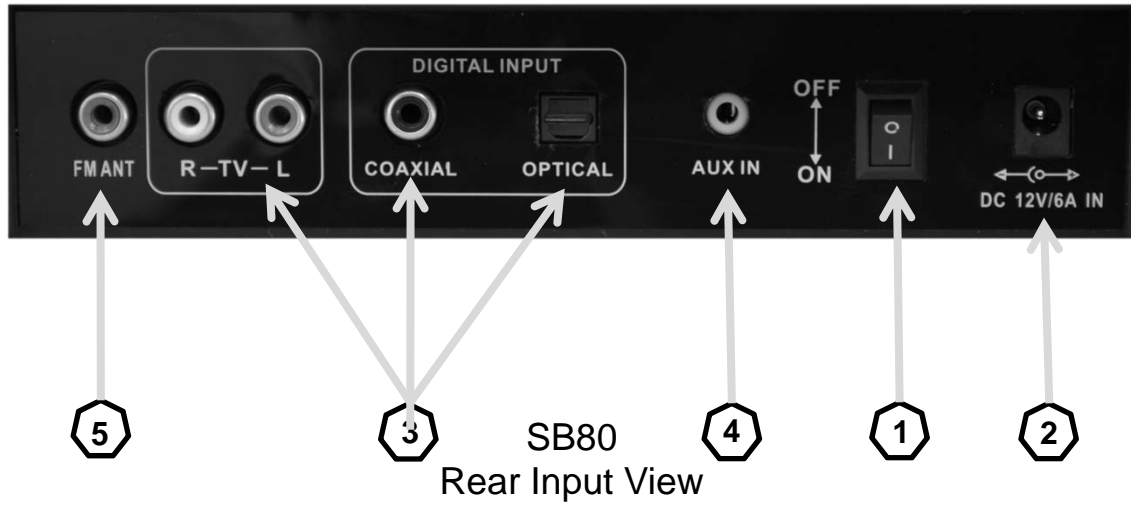
www.currentaudio.com

©2012 Current Audio LLC

1830 John Towers Avenue El Cajon, CA 92020 Sales 866-927-7181

SB80 RPA 090312

SB80 Home Theater SoundBar Elements



INSTALLATION

Getting Started

SoundBar Placement

Note: Current Audio D-Force SoundBar requires adequate free air space for safe and proper operation.

Where to Locate SoundBar

Either mount the SoundBar on a flat horizontal surface centered in front of the TV or surface wall mount the SoundBar on the wall via the Key Hole slots. Use proper wall anchors to support the weight of the SoundBar. (see Picture)



Where to Locate Subwoofer

Install the wireless subwoofer preferably near the front wall next to a 110VAC outlet. The power cord is the only wire needed for hook-up. Corner placement will give an added bass boost.

INSTALLATION

Making Connections

Caution: All connections and switching should be done with the AC power switched OFF. The final connection should be the power cords.

INPUTS

The inputs are located on the back of the SoundBar. They include 12VDC Power, Analog RCA, Digital Optical, Digital Coaxial and 3.5mm Jack

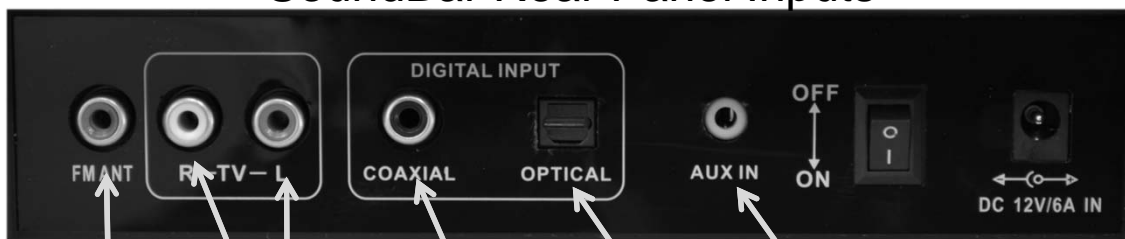
www.currentaudio.com

INSTALLATION

Making Connections

See picture for Hook-Up
Use quality connection cables for best performance

SoundBar Rear Panel Inputs



Connect Blue FM RCA Plug

Connect Red and Black Stereo RCA Plug from TV

Optical & RCA Coax Digital

Optical Digital Cable

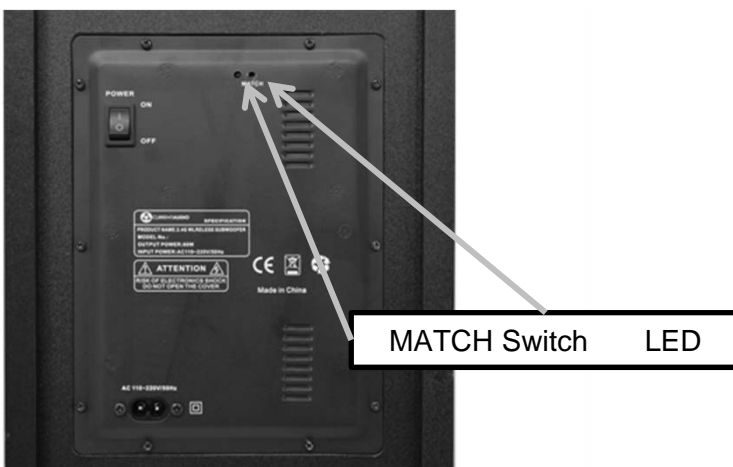
3.5mm Stereo Plug from Mobile Device

INSTALLATION

Setup for SoundBar and Wireless Subwoofer Matching

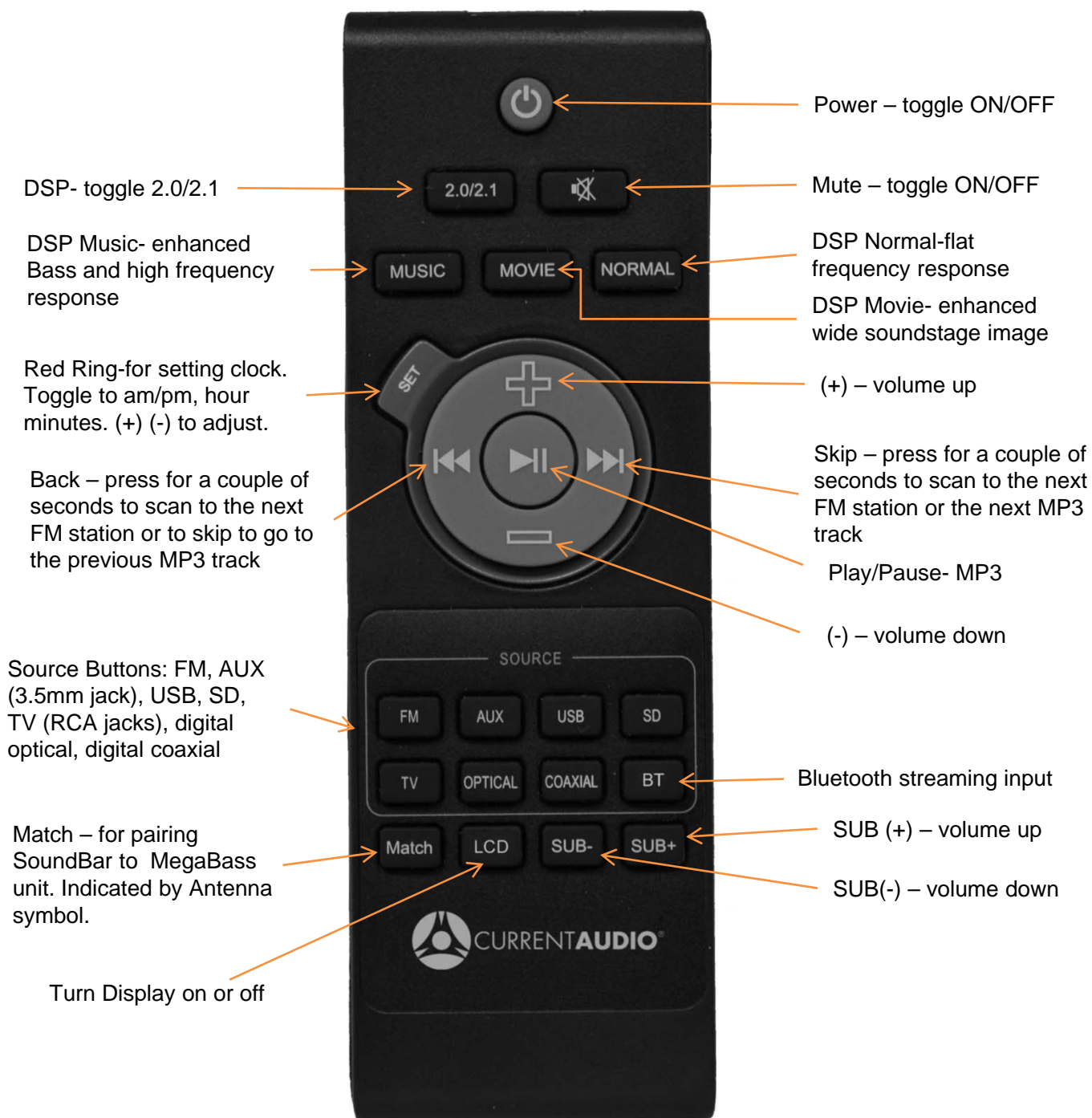
The wireless signal between the SoundBar and the MegaBass is factory set. In order for the SoundBar to communicate with the wireless MegaBass subwoofer the units must sync with each other. If the units are not in sync the following steps will allow the two units to talk with each other and allow the subwoofer to receive the low frequencies from the SoundBar.

1. Plug the subwoofer into a close 110VAC outlet.
2. Press the ON/Off Power switch to On position.
3. Energize the 12VDC SoundBar Power by placing the rear switch to ON.
4. Switch SoundBar from Standby power to ON. Use either the Remote Control or the Power Touch switch on the SoundBar. Check LCD Display.
5. Switch the SoundBar Mode to 2.1 by the Remote Control.
6. On the Remote Control, press the MATCH button (at the bottom left) until the LCD screen indicates the Signal Symbol ∇ under the 2.1 mode display.
7. Using a pen or small screwdriver, depress the MATCH sync momentary switch on the back panel of the Subwoofer and hold for at least 10 seconds or until the Match LED blinks rapidly. This indicates the subwoofer is in the process of syncing with the SoundBar.
8. When the Match LED stops blinking and remains solid the match between the SoundBar and subwoofer is successful.



INSTALLATION Remote Control Functions

See picture for functions



Bluetooth connection guide for model SB80

1. Turn the power on the SoundBar SB80 with the remote control
2. Press the “BT” button on the remote control, BT will be displayed in the upper left hand portion of the LCD screen



3. Turn on your Bluetooth compatible device and allow it to search for the SoundBar. The default name of the SoundBar is OVC3860. The connect it by using 0000 as the security code.
4. Please see your device’s Bluetooth connection directions for further details.

INSTALLATION

Troubleshooting

Trouble	Possible Cause	Possible Solution
No Sound	Unit not plugged into AC power	Check power, plug in to a live unswitched outlet.
	Audio cables Not properly connected	Check cable connections. Replace cable. Check if connected to proper inputs.
	Master Power Switch on rear	Place Master Power switch to ON.
	Front Power Switch	Switch from Standby to ON
	Change to proper Input	Change from any input back to desired input.
	Optical input has 2 channel signal	Insure TV/DVD is set to 2 channel audio out.
No Audio from Subwoofer	SoundBar and subwoofer not Matched	Redo MATCH sequence
	Not in 2.1 Mode	Switch from 2.0 to 2.1 Mode
	Volume turned Down	Turn up Sub Volume
No Audio from USB /SD	No files stored on unit	Download MP3 or WMA files to USB or SD
Remote Control Not Responding Correctly	Remote not directed to Receive Window	Aim Remote to Receive Window On SoundBar.
	Remote too far from SoundBar	Move to within 8 meters of SoundBar
	Remote Batteries weak or dead	Change Batteries

Warranty

Limited 1 Year Warranty

Current Audio, LLC SoundBars are warranted to be free from defects in materials and or workmanship to the original retail purchaser for a period of 1 year, provided the equipment was purchased and installed from a Current Audio, LLC Authorized Dealer or Distributor.

In the event of defective materials and or workmanship, Current Audio, LLC will repair or replace, at its option, the defective product at no charge to the purchaser. In order to make claim under this Warranty and to obtain performance of any obligation under warranty, please contact Current Audio or your Authorized Distributor. Instructions will be given on how to return the defective product to Current Audio. Returned products must be shipped prepaid. Proof of purchase must be provided with the product.

The Warranty does not apply to damage not resulting from defective materials and or workmanship while in the possession of the original consumer or due to unreasonable use by the original owner, which includes but not limited to improper installation, negligence, unauthorized repair or modification, or aesthetic deterioration from the environment. Products purchased by internet or unauthorized sources will void the warranty and not be honored.

Current Audio, LLC is not liable for any incidental or consequential damages, so the above limitations or inclusion may not apply to you. This warranty gives you specific legal rights, and you may have other rights, which vary from state to state within the United States.

FCC Statement

This equipment has been tested and found to comply with the limits for a Class B digital device, pursuant to part 15 of the FCC rules. These limits are designed to provide reasonable protection against harmful interference in a residential installation. This equipment generates, uses and can radiate radio frequency energy and, if not installed and used in accordance with the instructions, may cause harmful interference to radio communications. However, there is no guarantee that interference will not occur in a particular installation. If this equipment does cause harmful interference to radio or television reception, which can be determined by turning the equipment off and on, the user is encouraged to try to correct the interference by one or more of the following measures:

- Reorient or relocate the receiving antenna.
- Increase the separation between the equipment and receiver.
- Connect the equipment into an outlet on a circuit different from that to which the receiver is connected.
- Consult the dealer or an experienced radio/TV technician for help.

To assure continued compliance, any changes or modifications not expressly approved by the party Responsible for compliance could void the user's authority to operate this equipment. (Example- use only shielded interface cables when connecting to computer or peripheral devices).

RF warning statement:

The device has been evaluated to meet general RF exposure requirement. The device can be used in portable exposure condition without restriction.

Caution:

Any changes or modifications not expressly approved by the party responsible for compliance could void the user's authority to operate this equipment.