

SXC-1080

CDMA 1x USB MODEM



Wherever you are.

Wherever you need

TATA

Indicom

 **SUNGIL TELECOM**

Introduction

Congratulations on your purchase of the advanced and compact SXC-1080 USB Modem, designed to operate with the latest digital mobile communication technology.

This user's guide contains important information on the use and operation of this phone. Please read all the information carefully for optimal performance and to prevent any damage to or misuse of the USB Modem. Any changes or modifications not expressly approved in this user's guide could void your warranty for this equipment.

For Your Safety

Read these simple guidelines. Breaking the rules may be dangerous or illegal. Further detailed information is given in this manual.

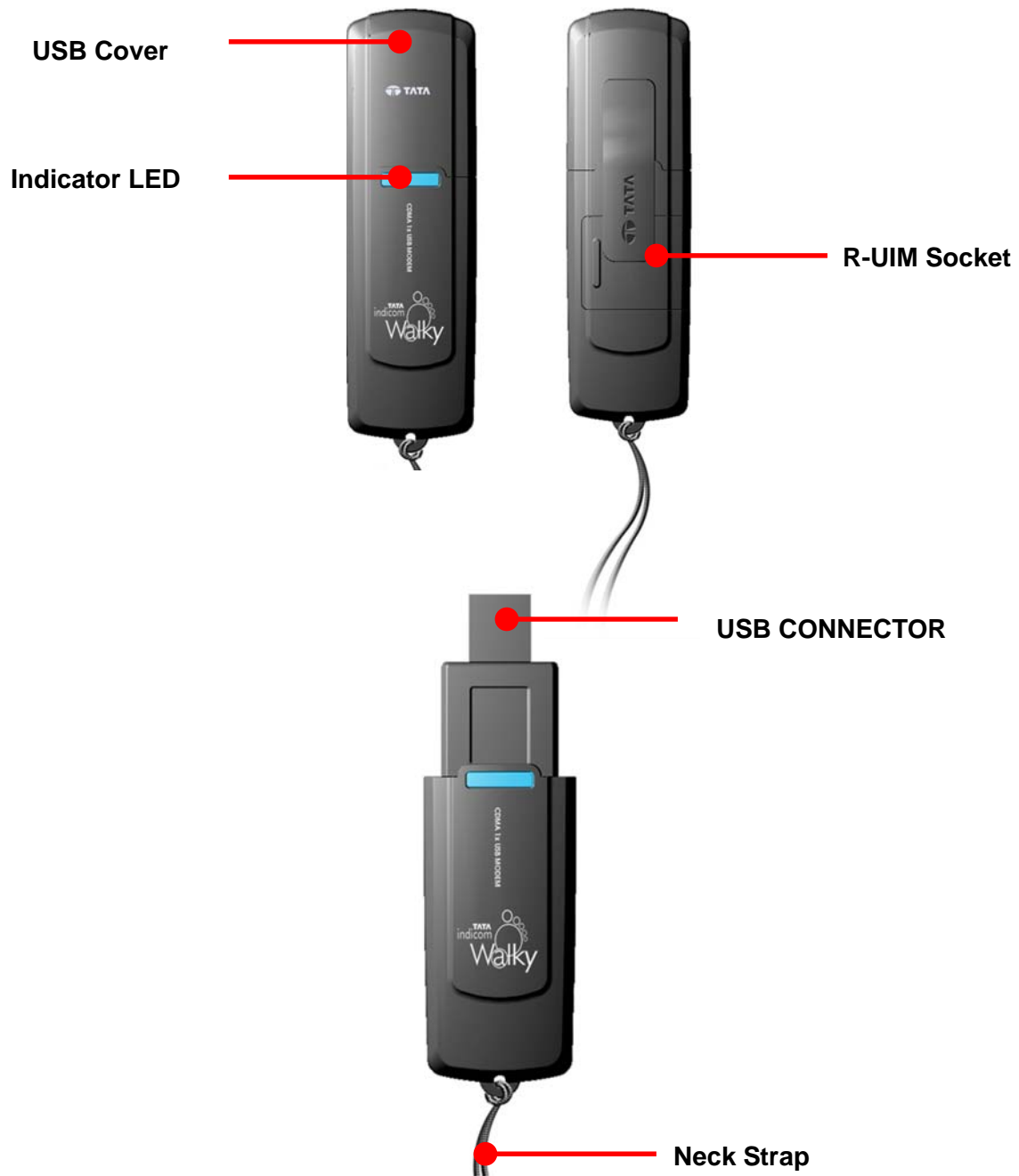
Warning

- USB Modem must be switched off at all times in an aircraft.
- Do not use your Modem near petrol stations, fuel depots, chemical plants or blasting operations.
- For your safety, use ONLY specified note-book PC and desk-top PC
- Do not handle the modem with wet hands while it is being charged. It may cause an electric shock or seriously Damage your modem.
- Keep the modem in a safe place out of small children's reach. It includes small parts which if detached may cause a choking hazard.

Caution

- Switch off the modem in any area where required by special regulations. For example, do not use your modem in hospitals or it may affect sensitive medical equipment.
- Emergency calls may not be available under all cellular networks. Therefore, you should never depend solely on the modem for emergency calls.
- Only use ORIGINAL accessories to avoid damage to your modem.
- All radio transmitters carry risks of interference with electronics in close proximity. Minor interference may affect TVs, radios, PCs, etc.

1. Part of the USB Modem



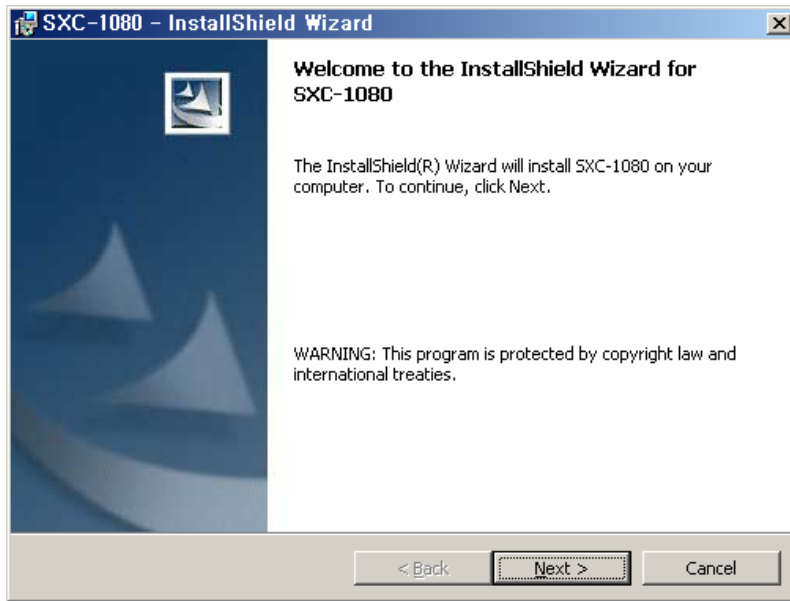
2. Product Specification

Function	SXC-1080	Remarks
Main Operation Chip	MSM6025,RFR6122, RFT6122	
CDMA Standard	TIA/EIA/IS-2000, IS-98D, Backwards compatibility with IS-95 A/B	
Frequency Band of Operation	Cellular 800 Single Band Support	
	<u>Band Class 0</u>	
	TX: 824 ~ 849 MHz	
	RX: 869 ~ 894 MHz	
Transmit Power	200mW	
Power supply	4.5 ~5.5V DC	USB Power
Data Rate	Up to 153 Kbps(FL:153Kbps / RL:153Kbps)	
Data options	Feed through : Packet data, A sync data	
	Protocol : SMS, Simple IP	
Connector&Switches	USB Power input connector	
Hardware Interface	USB 1.1 and 2.0	
Software Interface	IS-707.3 AT Commend set	
LEDs	2 LED(Power)	3 Color LED
PRL/OTA support	Use RUIM	
Phone book	Use PC UI Application	
Antenna	Intenna	
Connector&Switches	USB Power input connector	
Installation	Notbook/Desktop PC	USB Interface
Dimension	W: 88 ,D:28.9 ,H:10.6 (mm)	
Weight	Net(20g),Gift box(TBD kg)	TBD
O/S SUPPORT	Windows 2000, Windows XP(Option : WIN98ME)	

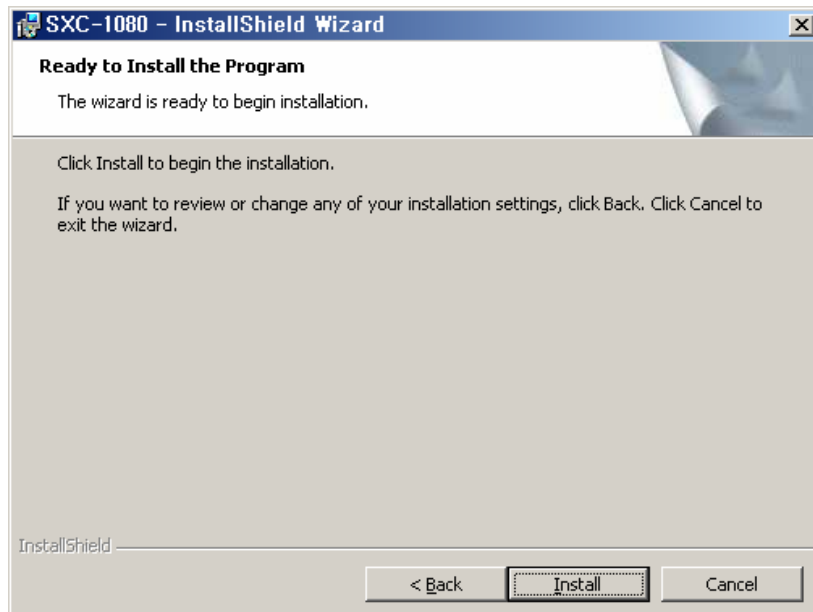
3. Program user guide

3-1 Program install guide

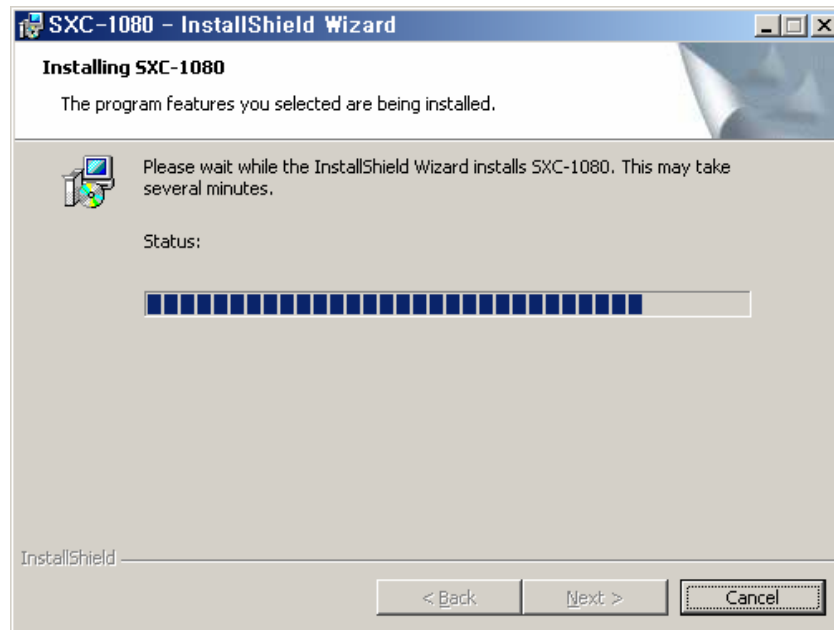
1. The install program insert at CD-ROM drive
2. If waited, Autorun program start a install
3. If do not started install program, Use window search to install Setup.exe of CD-ROM
4. The picture is install start program screen . Push “Next”



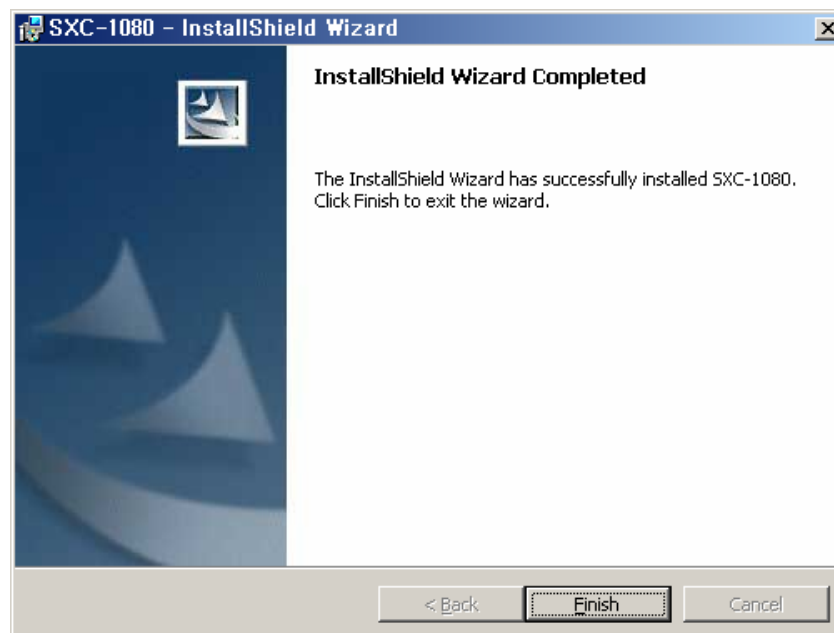
5. The picture is ready to install the program. Click “Install”, start program



6. Start the SXC-1080 install program



7. The picture is install program finished



3-2 ON-Screen Icons



Connect wireless internet via Dial connection network.



Didconnect wireless internet via Dial connection network.



You can use Find function to find registered name or phone number you want in the list



You have received a text message



You want to send the text message



Setup various information in application.

3-3. PC Client Manual

Run application and then below window is active.

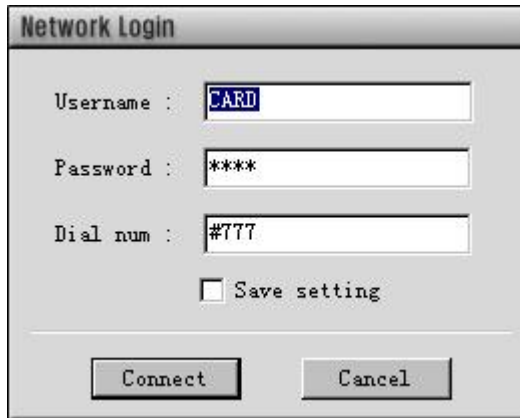
Below window has 6 function menu.



1. Internet

Connect wireless internet via Dial connection network.

Click internet menu to be showed below pop-up window



The image shows a 'Network Login' dialog box with a title bar. It contains three input fields: 'Username' with the text 'CARD', 'Password' with '****', and 'Dial num' with '#777'. Below these fields is a checkbox labeled 'Save setting' which is currently unchecked. At the bottom of the dialog are two buttons: 'Connect' and 'Cancel'.

Username : fill in user ID, password and Dial number provided by service provider, and then click connect button to connect wireless network.(If you want to save this information, click square box next to “ Save setting”.

2. Address Book

Manage phone book.

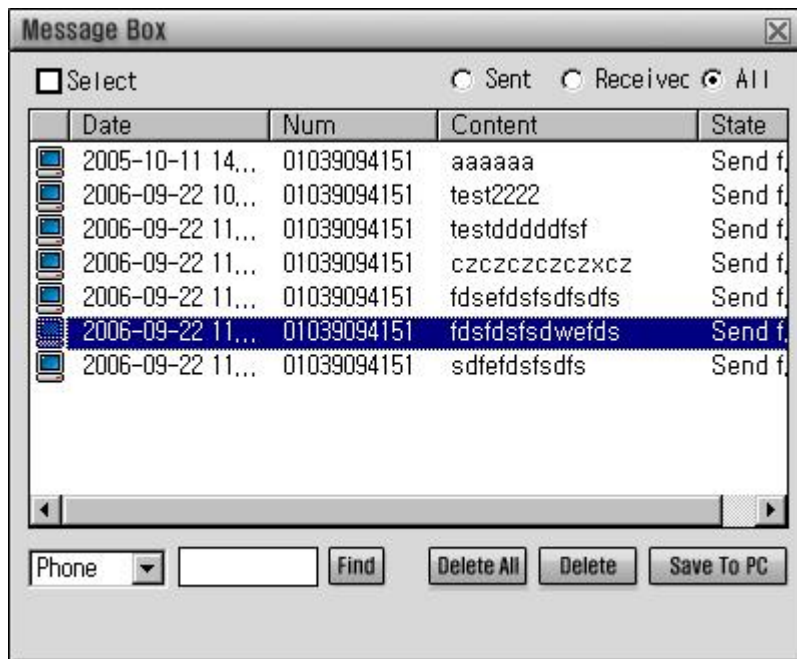
- 1) If you want to call or send SMS to member in the list, select the member and click the right mouse button. You see pop-up menu and just click Send or Call.
- 2) You can use Find function to find registered name or phone number you want in the list.
 - A. If you want to register new number, just click Add button. You can see Add list and Add Group. Select Add List to be showed new screen for new Number(Refer to below picture).

- B. If you want to synchronize phone book between PC and UIM Card, click phone book button to be showed below phone book window.

Use left, right arrow button to select phone number and use copy/move option to synchronize the selected number.

3) SMS Read

Manage received and sent SMS history.

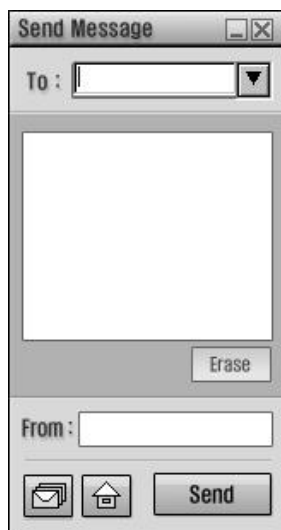


3.1) Select the number you want to send to and click right mouse button. You see the SMS sending screen.

3.2) To save message box info, click Save To PC button.

4) SMS Write/Send

Send SMS.



4.1) Fill in the number you want to send in blank box, “To : _____” and click send button.

4.2) To move the phone book, click the house button.

4.3) To move to SMS manager screen, click the envelope button

5) SMS Sent

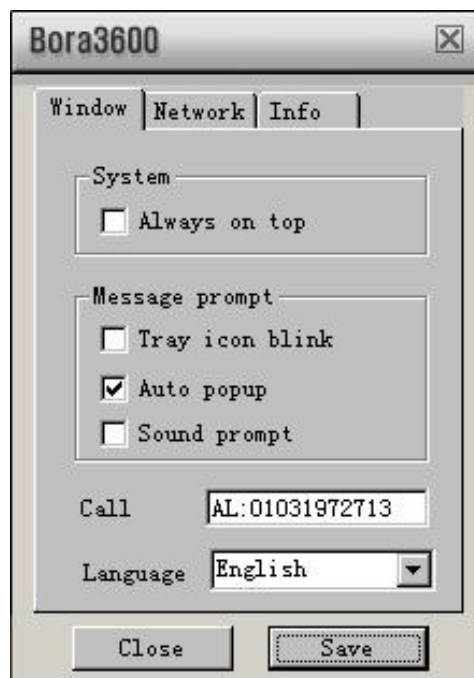
Manage sent SMS. This is the same button with Sent Radio button in SMS Read

6) Setup

Setup various information in application.

6.1) Window

Set up the window display function.



Always on top : Display window on top always.

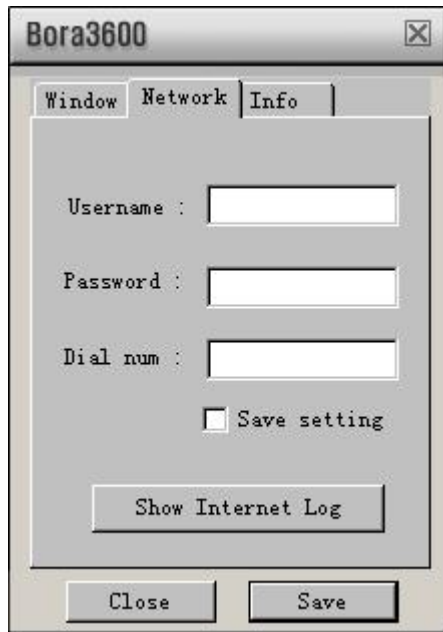
Tray icon blink : When application receives messages, tray icon blinks on working bar.

Auto Popup : when application receives messages, Message Box window shows automatically.

Sound prompt : when application receives messages, make arrival sound.

6.2) Network

Register ID, password and Dial number to connect the wireless network.



6.3) Setup Info

Show the application version.

4.Mechanical Specifications

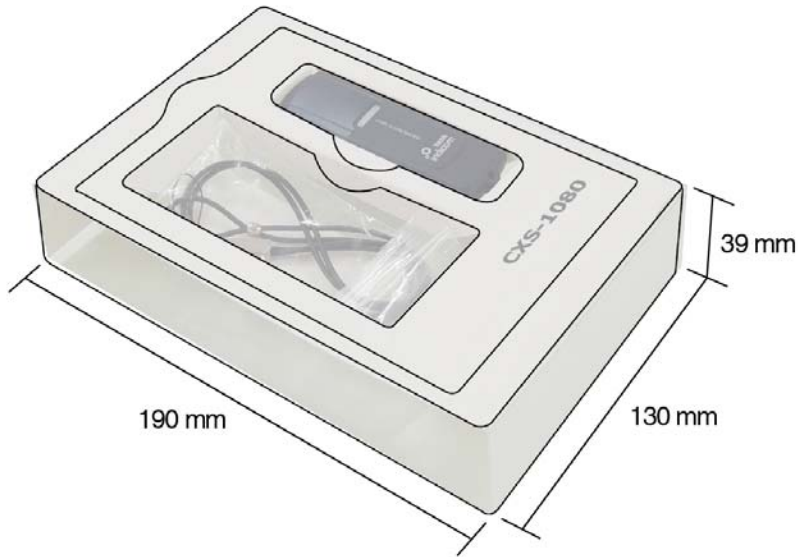


Figure 3.1 Gift box Design



Figure 3.2 USB Extension Cable



Figure 3.3 Install CD

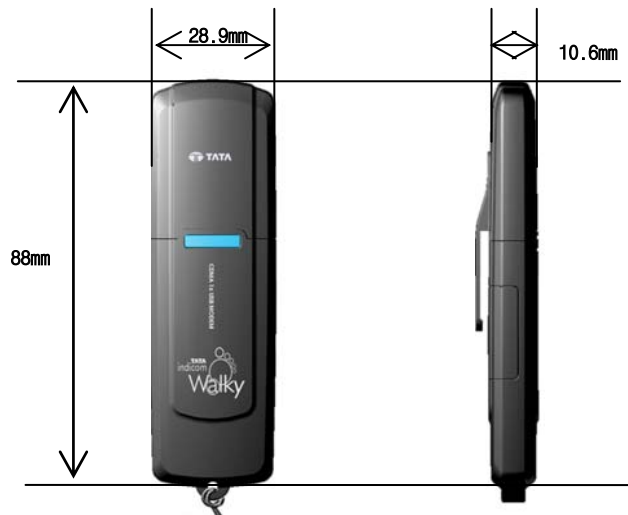


Figure 3.4 Mechanical dimension

RF EXPOSURE INFORMATION

THIS CDMA USB DONGLE MEETS THE GOVERNMENT 'S REQUIREMENTS FOR EXPOSURE TO RADIO WAVES.

Your CDMA USB DONGLE is a radio transmitter and receiver. It is designed and manufactured not to exceed the emission limits for exposure to radio frequency (RF) energy set by the Federal Communications Commission of the U.S. Government. These limits are part of comprehensive guidelines and establish permitted levels of RF energy for the general population. The guidelines are based on standards that were developed by independent scientific organizations through periodic and thorough evaluate on of scientific studies. The standards include a substantial safety margin designed to assure the safety of all persons, regardless of age and health.

The exposure standard for wireless devices employs a unit of measurement known as the Specific Absorption Rate, or SAR. The SAR limit set by the FCC is 1.6 W/kg.*Tests for SAR are conducted with the device transmitting at its highest certified power level in all tested frequency bands. Although the SAR is determined at the highest certified power level, the actual SAR level of the device while operating can be well below the maximum value. This is because the phone is designed to operate at multiple power levels so as to use only the power required to reach the network. In general, the closer you are to a wireless base station antenna, the lower the power output. Before a wireless device is available for sale to the public, it must be tested and certified to the FCC that it does not exceed the limit established by the government adopted requirement for safe exposure.

The highest SAR value for this CDMA USB Dongle is **1.160 W/kg**. The FCC has granted an Equipment Authorization for this CDMA USB Dongle with all reported SAR levels evaluated as in compliance with the FCC RF exposure guidelines. SAR information on this model phone is on file with the FCC and can be found under the Display Grant section of [http://www.fcc.gov / oet / fcc id](http://www.fcc.gov/oet/fccid) after searching on **FCC ID : R2NSXC-1080**.

Additional information on Specific Absorption Rates (SAR) can be found on the Cellular Telecommunications & Internet Association (CTIA) web-site at <http://phonefacts.net>.*In the United States and Canada, the SAR limit for mobile phones used by the public is 1.6watts/kg (W/kg) averaged over one gram of tissue. The standard incorporates a substantial margin of safety to give additional protection for the public and to account for any agitations in measurements.

In August 1996 the Federal Communications Commission (FCC) of the United States with its action in Report and Order FCC 96-326 adopted an updated safety standard for human exposure to radio frequency (RF) electromagnetic energy emitted by FCC regulated transmitters. Those guidelines are consistent with the safety standard previously set by both U.S. and international standards bodies. The design of this phone complies with the FCC guidelines and these international standards.

[For more information about RF exposure, please visit the FCC website at www.fcc.gov](http://www.fcc.gov)

WARNING! Read this information before use

Caution

Modifications not expressly approved by the party responsible for compliance could void the user's authority to operate the equipment.

FCC Compliance Information

This device complies with Part 15 of FCC Rules. Operation is subject to the following two conditions: (1) This device may not cause harmful interference, and (2) This device must accept any interference received. Including interference that may cause undesired operation.

Information to User

This equipment has been tested and found to comply with the limits for a Class B digital device, pursuant to part 15 of the FCC Rules. These limits are designed to provide reasonable protection against harmful interference in a residential installation. This equipment generates, uses and can radiate radio frequency energy and, if not installed and used in accordance with the instructions, may cause harmful interference to radio communications. However, there is no guarantee that interference will not occur in a particular installation. If this equipment does cause harmful interference to radio or television reception, which can be determined by turning the equipment off and on, the user is encouraged to try to correct the interference by one or more of the following measures:

- Reorient or relocate the receiving antenna.- Increase the separation between the equipment and receiver.
- Connect the equipment into an outlet on a circuit different from that to which the receiver is connected.
- Consult the dealer or an experienced radio/ tv technician for help.