

Manual for users

3F DAEJIN B/D, 332-4
DOCSAN-1DIONG, KEUMCHUN-GU,
SEOUL, 153-814, KOREA

ACROTECH CO., LTD.

Manual for users

U.S.A

U.S.FEDERAL COMMUNICATIONS COMMISSION RADIO FREQUENCY INTERFERENCE
STATEMENT INFORMATION TO THE USER

NOTE: This equipment has been tested and found to comply with the limits for a Class B digital device pursuant to Part 15 of the FCC Rules.

These limits are designed to provide reasonable protection against harmful interference in a residential installation.

This equipment generates, uses, and can radiate radio frequency energy and, if not installed and used in accordance with the instructions, may cause harmful interference to radio communications.

However, there is no guarantee that interference will not occur in a particular installation.

If this equipment does cause harmful interference to radio or television reception, which can be determined by turning the equipment off and on, the user is encouraged to try to correct the interference by one or more of the following measures:

- Reorient or relocate the receiving antenna.
- Increase the separation between the equipment and receiver.
- Connect the equipment into an outlet of a circuit different from that to which the receiver is connected.
- Consult the dealer or an experienced radio/TV technician for assistance.

Changes or modification not expressly approved by the party responsible

for compliance could void the user's authority to operate the equipment.

Connecting of peripherals requires the use of grounded shielded signal cables.

[1] MODEL NAME / MEMORY SIZE

MODEL NAME	MEMORY SIZE
CG-FM016	16 MBYTE
CG-FM032	32 MBYTE
CG-FM064	64 MBYTE
CG-FM128	128 MBYTE
CG-FM256	256 MBYTE

[2] How to format memory

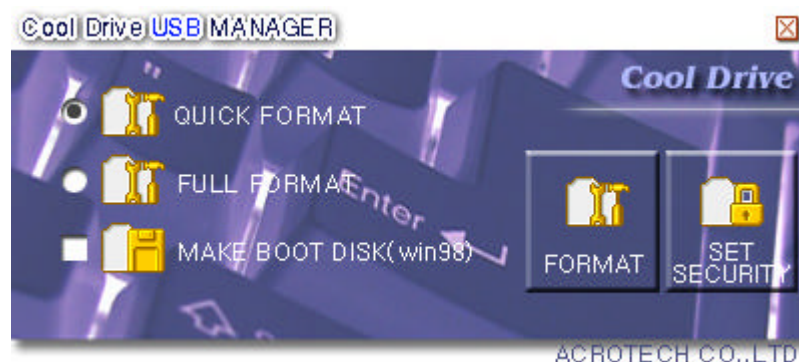
2.1 You use this device after the format if you correspond to the following cases.

- You are using the device for the first time
- You are doing Disk arrangement because of lots of Bad Block in Flash Memory.
- You should do "Full format" when there are Bad Block occurred after doing "Quick format".
- You are resetting a new password because of forgetting in the status of security setting.

(After the format, the status of security setting will be released)

1) Connect the device to USB Port

2) Among programs given, window screen should be shown if you execute "Cool Drive.exe" as below.



a) If Cool Drive does not currently connect with, the message of 'connect' will be shown and the program will not be started.

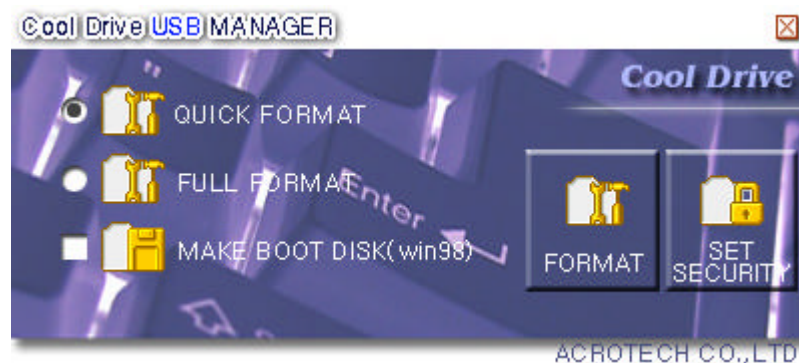
b) If there are more than two Cool Drive used with a same chip, the message of 'Choose Cool Drive' will be shown on the screen.

- 3) After selecting the "Quick format" or "Full format", click the 'execute format' button on the right side of your screen. ("Full format" may take some time.)
- 4) After the format is completed, CoolDrive should be used in normal condition.
(After the format, Security Setting will be released.)

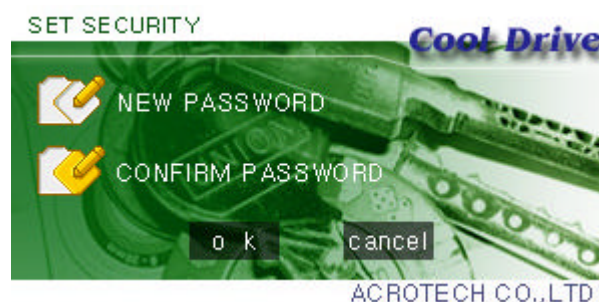
[3] How to set Security & Password

3.1 Security setting status

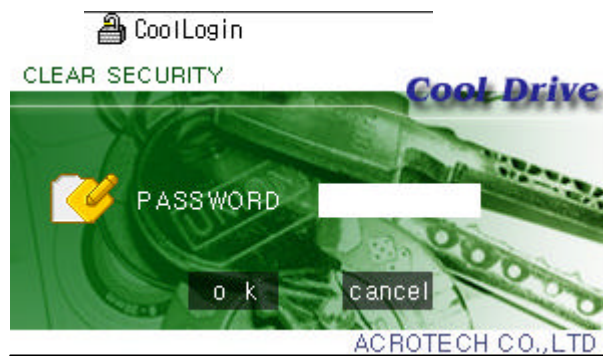
- 1) Connect the CoolDrive completed the format to USB Port.
- 2) Among programs given, window screen should be shown if you execute the "Cool Drive.exe" as below.



- 3) If you want to set up the status of security, click the "set security" button and put in password you want to use.



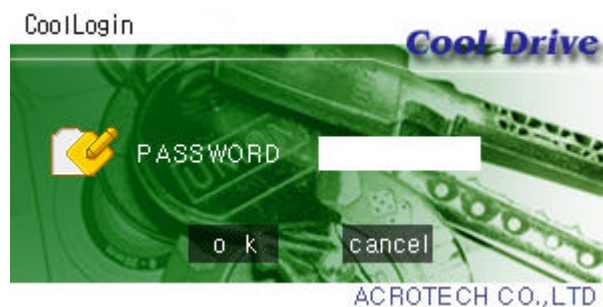
- 4) After removing the USB flash memory, you should reconnect.
- 5) If you click the "Removable Disk" in the Windows Explorer after reconnecting, the following screen will be shown.
- 6) If you execute the "CoolLogin.exe" on the right side of your screen, the screen below will be shown and click the "OK" button.



7) If you log in normally, the above screen will be disappeared. Then, it will be shown the screen below in 1 sec. and can be used in normal condition.

3.2. Releasing setting security

- 1) Connect Cool Drive device to USB Port setted security.
- 2) If you are currently setted security, command the "CoolLogin.exe" and click the "Clear security " button after logging, the following screen will be shown. In that box, put in password setted security to release security setting.



[4] Make Bootable Disk

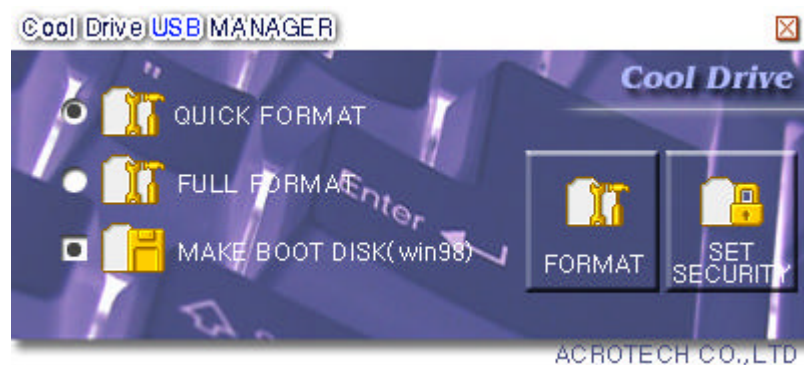
This function is only used for Windows 98, do the format after checking Make Bootable Disk in the box showed as below (for over Win 98, it will be inactive).

After the format, choose the "USB-ZIP" in the Boot Device from CHOS setup and boot it.

It is noticed at this moment that files related to Booting will be used for data zone, not for Security. If you want to boot with this device, you should use it after removing security option.

Also, to make a Bootable Disk, you should check 'Make Bootable Disk' when you set up windows at the first stage. Unless you have done the process, there is no file in spite of making Bootable Disk.

In this case, after doing this step, execute 'Make Bootable Disk' of windows and copy files of floppy disk into the device, then you have the same function of Bootable Disk.



[5] Removing device safety

Windows 98/XP : Should remove it when there is no light from the lamp.

Windows ME/2000 : Should remove it after executing 'Remove the device' on the right bottom of your windows screen.

Mac : Should remove it after executing "unmount" command.

[6] SPECIFICATION

OTHER		SPECIFICATION
MODEL NAME & MEMORY SIZE	CG - FM016	16 MBYTE
	CG - FM032	32 MBYTE
	CG - FM064	64 MBYTE
	CG - FM128	128 MBYTE
	CG - FM256	256 MBYTE
USB Interface		USB 1.1 (12Mbps/sec)
DATA SPEED		READ SPEED : 900 KB/sec WRITE SPEED : 600 KB/sec
POWER		P.C USB PORT
OPERATING O.S		Windows 98/ME/2000/XP MAC OS 9.0/Linux OS/Win CE
DRIVE		ONLY Windows 98
LED INDICATE		STAND BY : OFF READ/WRITE : ON
DATA PROTECT		USE SWITCH
MEMORY RETENTION		10 YEARS
TEMPERATURE		OPERATING TEMPERATURE : 0 ~ 70 STORAGE TEMPERATURE : -40 ~ 125
SIZE		68.5 X 21 X 10 mm
WEIGHT		10 g