



# WiB User Manual



**INDEX**

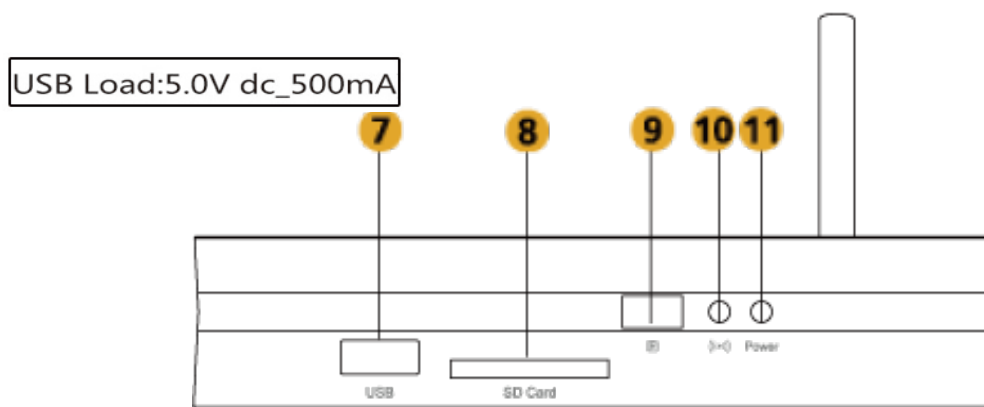
<b>Brief Introduction .....</b>	<b>1</b>
<b>Setup Guide.....</b>	<b>4</b>
Device Installation .....	4
Client Controller Applications Installation .....	5
<b>WiB Device User Guide .....</b>	<b>7</b>
WiB Home Screen .....	7
IrDA Remote Controller.....	8
Wireless Network Configuration.....	8
Device Name Modification.....	9
Language Setting.....	10
Change Audio Output.....	10
Supported Media Format.....	10
<b>WiB Windows Control Application.....</b>	<b>12</b>
Run Application.....	12
Set sharing folder .....	12
Connect Devices to WiB.....	13
Configure the WiB Device Wireless Network Connection .....	14
Play Media Files on the WiB Device.....	15
Mirror Content on the WiB Device .....	16
Disconnect from the WiB device.....	16
Get help.....	16
<b>WiB Android Control Application.....</b>	<b>17</b>
Network Connection Guide.....	17
Connect to the WiB Device .....	17
Play Media File on the WiB Device .....	18
Mirror Content on the WiB device.....	21
<b>DLNA Support.....</b>	<b>22</b>
<b>Frequently Asked Questions .....</b>	<b>23</b>
<b>Warnings .....</b>	<b>24</b>

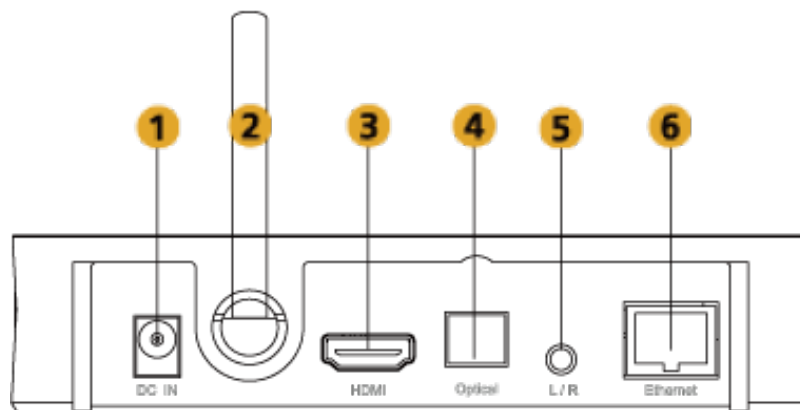
## **Brief Introduction**



**WiB** is a leading digital media device that wirelessly plays media/work files from a Windows computer or any smart device, such as iPhone, iPad, Android Phone and Android Pad, directly on a LCD TV.

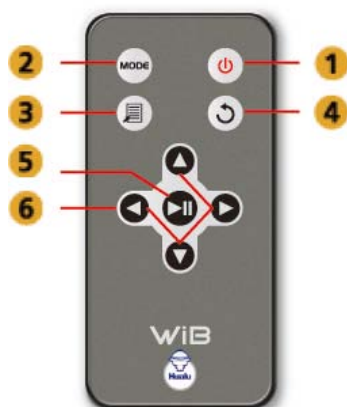
## **Appearance Description**





	Component	Explain
<b>1</b>	Power Interface	DC 5.0V --- 2.0A
<b>2</b>	Antenna	Wireless network antennas
<b>3</b>	HDMI Interface	Connect to high-definition TV
<b>4</b>	Optical interface	For HiFi
<b>5</b>	R / L	Left and right channel output
<b>6</b>	Ethernet interface	Connecting 10/100M
<b>7</b>	USB	removable storage devices,(USB Load:5.0V dc_500mA)
<b>8</b>	SD Card	Supports SD Card
<b>9</b>	Remote control receiver	Remote control
<b>10</b>	WiFi connection indicator	Flashing WiFi working long light machine into standby
<b>11</b>	Power Indicator	Indicates whether the power

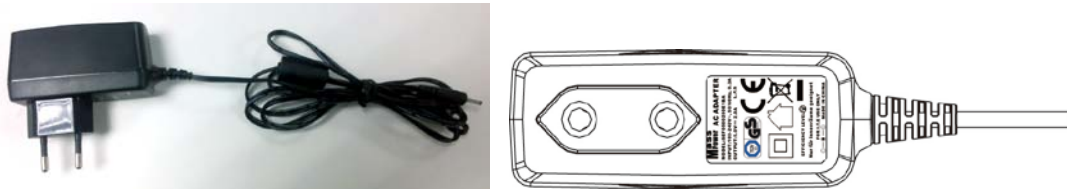
## Functional description of the remote control



	Component
<b>1</b>	Standby
<b>2</b>	LAN / AP network mode switching.
<b>3</b>	Menu
<b>4</b>	Back (menu operations)
<b>5</b>	OK (menu operation)
<b>6</b>	Navigation (menu operations)

## Adapter

Use only power supplies listed in the user instructions.



**Mass  
Power**

Input: 100-240V ~, 50/60Hz, 0.3A

Output: 5.0V  $\text{---}$  2.0A

MODEL : SEF0500200E1BA

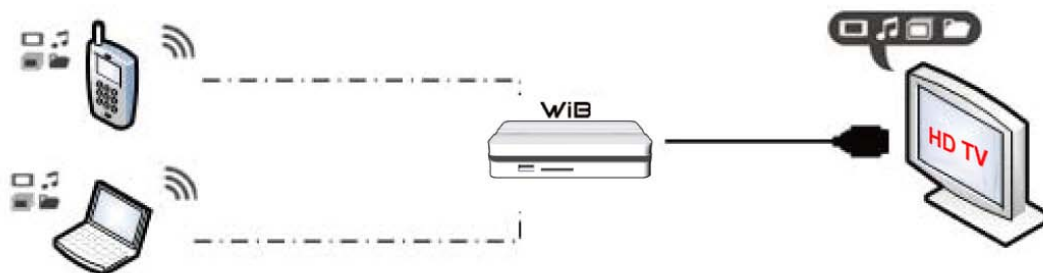
Shenzhen Mass Power Electronics Limited

Add: A&B Floors, Fu Runxin Industrial Park, Guiyue Road, Guanlan Town, Baoan District, Shenzhen City, P. R. China 518110

## Two Wireless Network Connection Modes

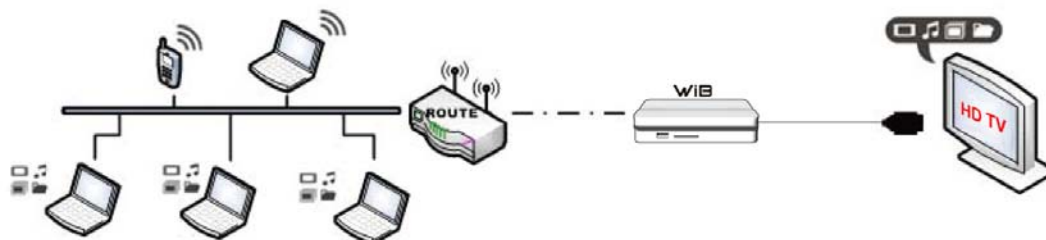
- AP Mode

The WiB device acts as a wireless access point. Your Windows computer or smart device can connect to a WiB device directly. This setup constructs a temporary wireless network for a non-wireless environment.



- LAN Mode

The WiB device and your Windows computer or smart device connects to a same wireless network. This setup provides capability for remote operation and internet connection. However, this setup is vulnerable to any interference in the WiFi signal.



## **Setup Guide**

---

WiB Setup Guide includes two parts:

- Device Installation
- Client Controller Application Installation.

### **Device Installation**



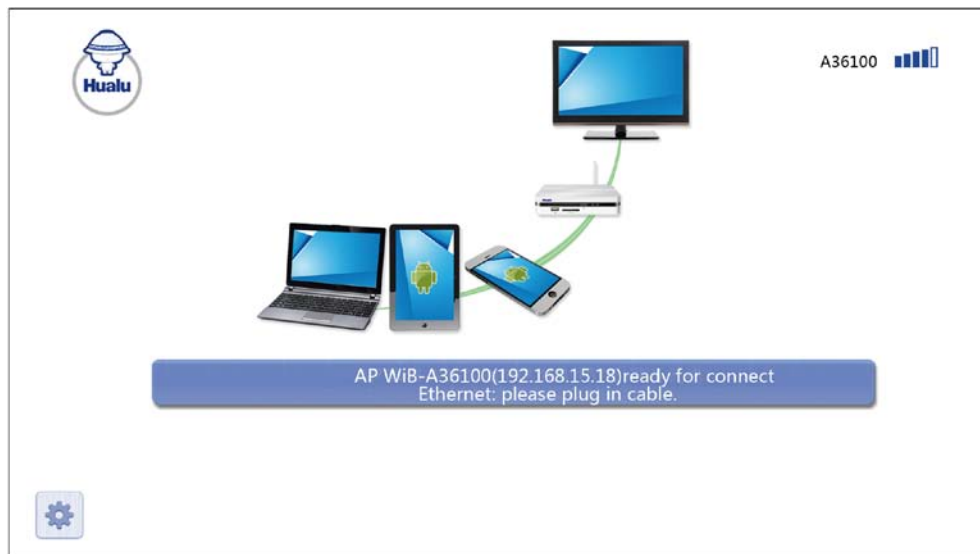
Step 1: Connect the power adapter (as shown above).



Step 2: Connect the HDMI cable to TV (as shown above).

Step 3: Switch TV to HDMI mode.

Step 4: Turn on WiB power switch. WiB startup manual will show on TV screen as follows:



When you use the WiB device for the first time, the default connection mode of the WiB device is the “AP mode”. If you want to make the WiB device connect to the wireless network, you can use the Remote Controller to configure the wireless network. For more detailed information, please refer to the “**Wireless Network Configuration**” (page 8) section.

You are able to connect to the device with the platform’s control application, such as WiB Windows Control application or WiB Android Control application. Once connected, you can configure the wireless network connection. For more detailed information, please refer to the “**WiB Windows Control Application**” (page 12) and “**WiB Android Control Application**” (page 17) sections.

## **Client Controller Applications Installation**

The Client Controller Applications is the WiB Remote Controller software that runs on Windows computer and mobile devices.

### ● **Windows Control Application installation**

- Step 1. Get the Windows Control Application setup package from the WiB CD.
- Step 2. Double click on the setup application to run it.  
(If your computer’s OS is Windows 7 or Vista and UAC alerts you that the setup application needs permission to run it, click the [YES] button to continue.)
- Step 3. You can select the installation language to guide your operation.
- Step 4. When the license information is displayed, click the [I Agree] button to continue.
- Step 5. Click the [NEXT] button or the [INSTALL] button to complete installation.  
Additional components will be installed automatically.

The WiB Windows Control application can be executed immediately after installation is completed by checking the **[Run application after installation]** option.

● **Android Control Application Installation**

- Step 1. Get the Android Control Application file which is in the APK format from the WiB CD.
- Step 2. Copy the APK file to your Android phone's memory card and insert the card into your Android phone.
- Step 3. To install the application on your Android phone, you need to change the installation rule: go to Settings -> Application Settings -> Enable Unknown Sources.
- Step 4. Make sure a file manager application had been installed on your Android phone.  
If a file manager application does not exist, you can find them in the Android Market. Examples include Astro File Manager, ES File Manager and File Expert.
- Step 5. Open the file manager application. It will show all the APK files stored directly in the root directory of your phone's memory card.
- Step 6. Just click on the Android Control Application file to install it.

● **iOS Control Application Installation**

- Step 1. Access the Apple AppStore and search "WiB" application.
- Step 2. Select the "WiB" application and install it.

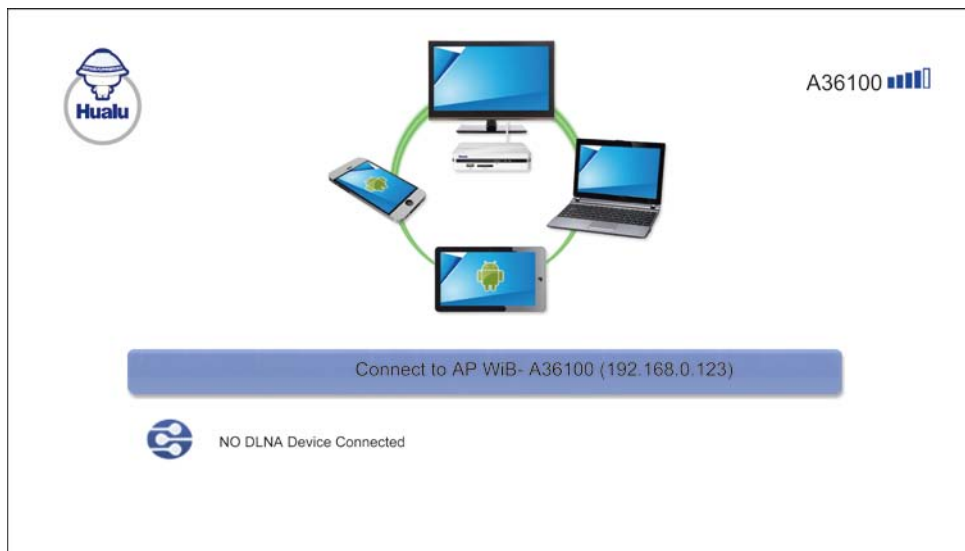


## WiB Device User Guide

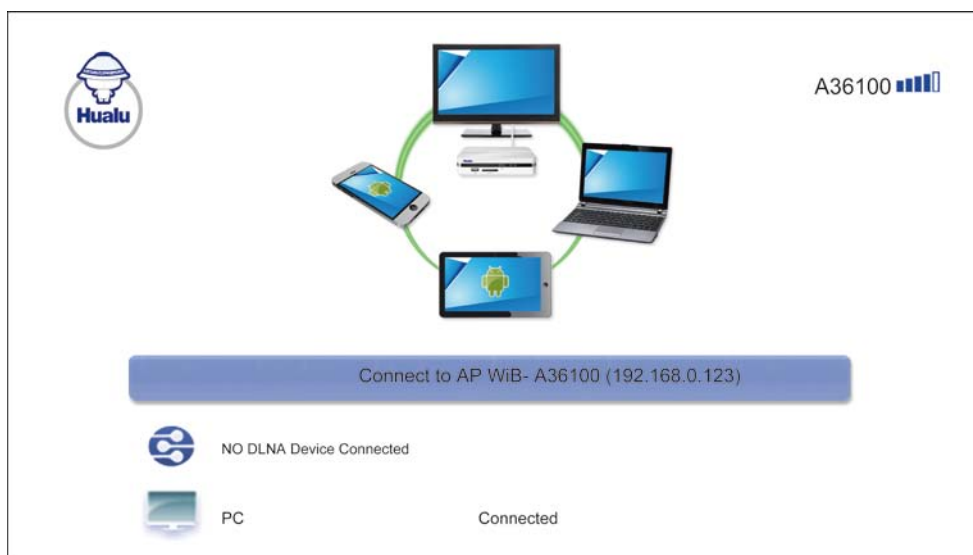
### WiB Home Screen

After the WiB Device has started, the WiB Home Screen will be displayed on your TV. It shows the current network connection mode and the client device connection status.

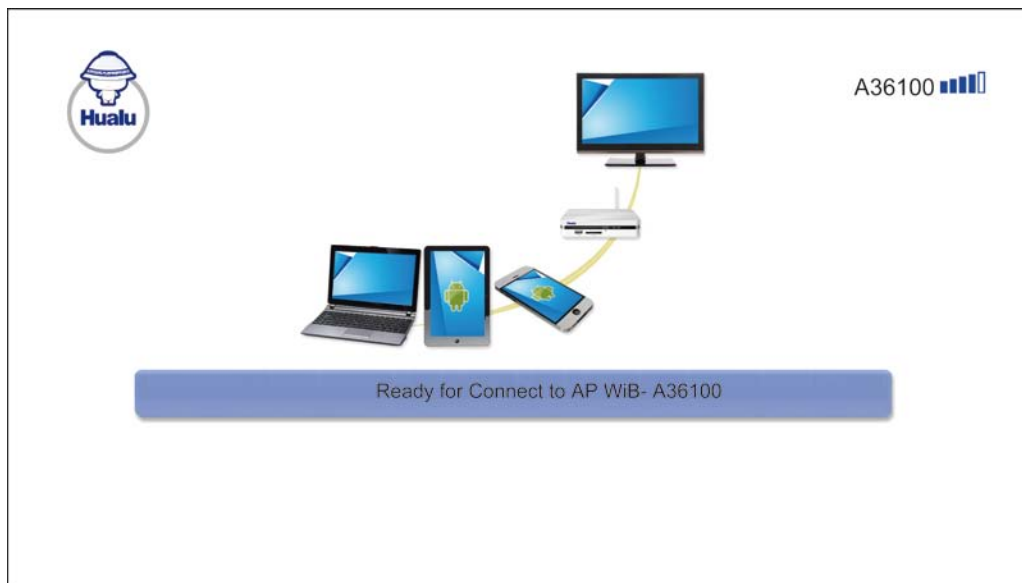
If WiB runs in LAN mode and is waiting for the client device to connect, the Home Screen will be shown as below.



If WiB runs in LAN mode and a PC client device is connected, the Home Screen will be shown as below.

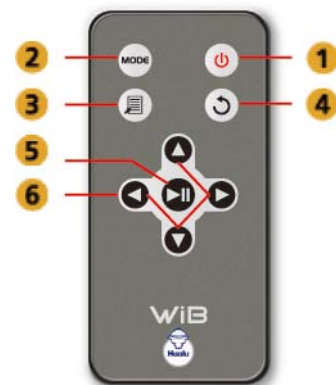


If WiB runs in AP mode and is waiting for client device to connect, the Home Screen will be shown as below.



### **IrDA Remote Controller**

	Component
1	Standby
2	LAN / AP network mode switching.
3	Menu
4	Back (menu operations)
5	OK (menu operation)
6	Navigation (menu operations)



### **Wireless Network Configuration**

To configure the wireless network for the WiB device, you can follow the steps listed below:

- Step 1. At first, plug in the WiB device power adapter to the outlet and turn on the device. If the device is working, skip this step.
- Step 2. When the Home Screen is displayed, press the [Menu] button on the Remote Controller to show “Application Menu”.

- Step 3. Select the “WiFi Setting” item and press the [OK] button on the Remote Controller to show the available wireless network list.
- Step 4. Use the [Up] or [Down] button on the Remote Controller to move the selection bar.
- Step 5. Select the wireless network that you want to connect and press the [OK] button. If the wireless network is protected with a password, the Password Input screen will be shown. Otherwise, please go to Step 7.
- Step 6. Use navigation buttons to move the selection cursor and press the [OK] button to input the selected character. After password input is complete, use the navigation button to locate the [Enter] key and press the [OK] button to submit the password.
- Step 7. The WiB device will try to connect to the specified wireless network. If it is successful, the wireless network information will be shown on the Home Screen; otherwise, the original connection will be kept and shown on the Home Screen.

### **Device Name Modification**

The WiB Device had been set to a default name when it was manufactured. User can rename the device using the Remote Controller without other control applications.

- Step 1. First, plug in the WiB device power adapter to the outlet and turn on the device. If the device is working, skip this step.
- Step 2. When the Home Screen is displayed, press the [Menu] button on the Remote Controller to show the “Application Menu”.
- Step 3. Select the “System Setting” item and press the [OK] button on the Remote Controller.
- Step 4. Select the “Rename Device” item and press the [OK] button on the Remote Controller.
- Step 5. Use the navigation buttons to move the selection cursor and press the [OK] button to input the selected character. After name input is complete, use the navigation button to locate the “Enter” key and press the [OK] button to submit the name.
- Step 6. The WiB device will return to Home Screen and the new name will be shown.

Note: The device name should be in the English alphabets and/or underscores. And its length must be less than 12 characters long.

## **Language Setting**

The WiB Device supports multiple languages. Currently it supports English, Simplified Chinese, Traditional Chinese, and Japanese. You can change the system language using the Remote Controller.

- Step 1. First, plug in the WiB device power adapter to the outlet and turn on the device. If the device is working, skip this step.
- Step 2. When the Home Screen is displayed, press the [Menu] button on the Remote Controller to show the “Application Menu”.
- Step 3. Select the “System Setting” item and press the [OK] button on the Remote Controller.
- Step 4. Select the “Language” item and press the [OK] button on the Remote Controller.
- Step 5. Use the navigation buttons to move the selection bar to select the target language item and press the [OK] button to submit.
- Step 6. Wait for the system to restart with the selected language.

## **Change Audio Output**

There are 2 kinds of Audio output mode on the WiB device. You can change it using the Remote Controller.

- Step 1. First, plug in the WiB device power adapter to the outlet and turn on the device. If the device is working, skip this step.
- Step 2. When the Home Screen is displayed, press the [Menu] button on the Remote Controller to show the Application Menu.
- Step 3. Select the “System Setting” item and press the [OK] button on the Remote Controller.
- Step 4. Select the “Audio Output” item and press the [OK] button on the Remote Controller.
- Step 5. Use the navigation buttons on the Remote Controller to move the selection bar to select the target output mode.
- Step 6. Select the “OK” button item and press the [OK] button on the Remote Controller to change the audio output.

## **Supported Media Format**

WiB Device supports various media format.

- Video Format: AVI (XVID, AVC, MPEG1/2/4), MPG/MPEG, VOB, WMV9, ASF, MKV (h.264, x.264, AVC, MPEG1/2/4, VC-1), 3GPP(.mp4,.3gp,.mov), RMVB, RV8/9/10,

FLV

- Audio Format: MP3, WAV/PCM/LPCM, WMA, AAC in 3GPP, FLAC, MKA, OGG, Dolby Digital (AC3), DTS (2 Channels Only)
- Photo Format: JPEG, BMP, GIF, PNG

The detail decode resolution list as following:

- MPEG2 MP@HL: up to 1920x1080p24, 1920x1080i30 or 1280x720p60 resolution.
- MPEG4.2 ASP@L5 up to 1920x1080p30 resolution and no support for global motion compensation.
- WMV9/VC-1 MP@HL up to 1280x720p60 or 1920x1080p24 resolution.
- VC-1 AP@L3 up to 1920x1080i30, 1920x1080p24 or 1280x720p60 resolution.
- Flash video (H.263, H.264) up to 1920x1080p24 or 1280x720p60 resolution.
- RMVB video up to 1920x1080p24 or 1280x720p60 resolution.
- H.264 MP@L4.1 and MP@L4.1 up to 1920x1080p30 or 1280x720p60 resolution

## **WiB Windows Control Application**

The following list describes the recommended system requirements for WiB Windows Control Application installation. Actual system requirements will vary, depending on system configuration and on the programs that you installed.

- OS: Windows 7 series
- CPU: Intel Core i5 or i7 (Sandy Bridge platform)
- RAM: 2GB

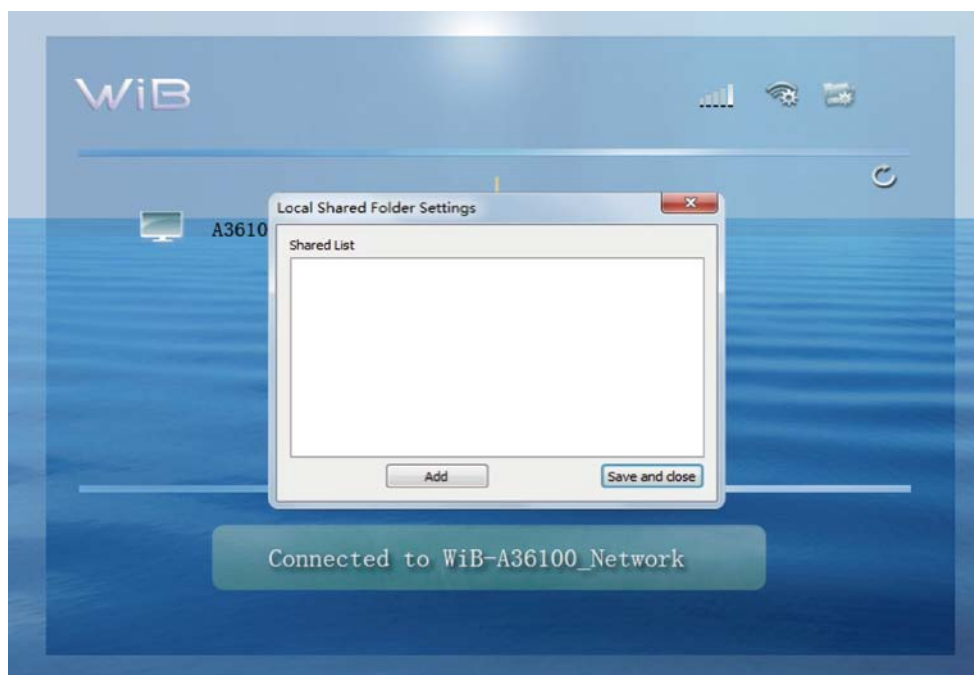
### **Run Application**

You can double click the “WiB Window Control” shortcut icon that is on the desktop to run the application manually.


If the Windows firewall or other third party firewall applications alert that the WiB Windows Control application requires network access, you should click the **[YES]** button to allow the application to connect to the network.

### **Set sharing folder**

For first time users, the “Local Shared Folder Settings” window will be shown automatically.

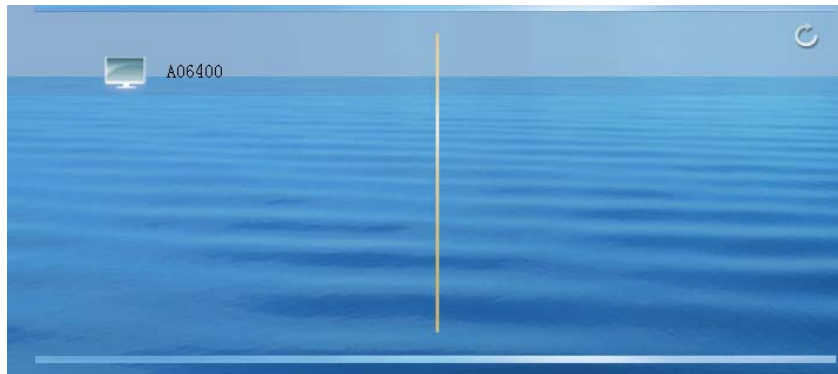


In the “Local Shared Folder Settings” window, you can add or remove the folder that contains media files you want to play remotely.

Alternatively, you can also set the sharing folder by clicking the [sharing folder management] button (  ) while the WiB Windows Control application is running.

## **Connect Devices to WiB**


The device list shows all WiB devices that the WiB Windows Control application found. These devices include all devices connected to the same wireless network as your Windows computer.




You can click the device icon to connect it. The Play window will be displayed after the device is connected to the WiB device.



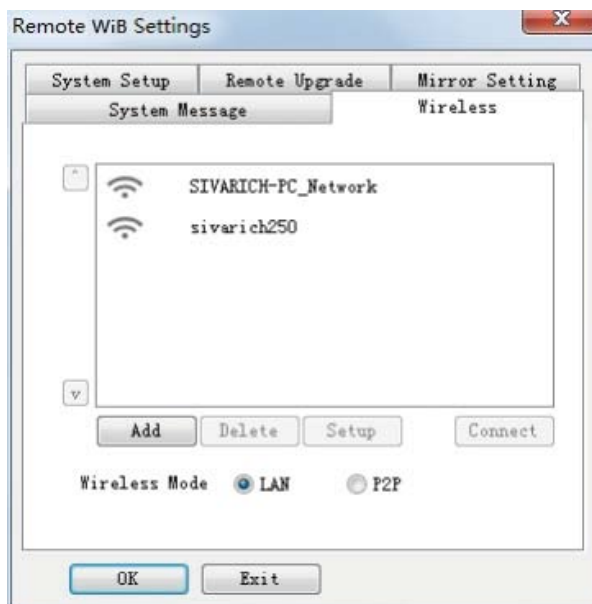
- Click the [Network Switcher] button (  ) to change the wireless network.

- Click the **[Refresh List]** button (  ) to refresh the device list.

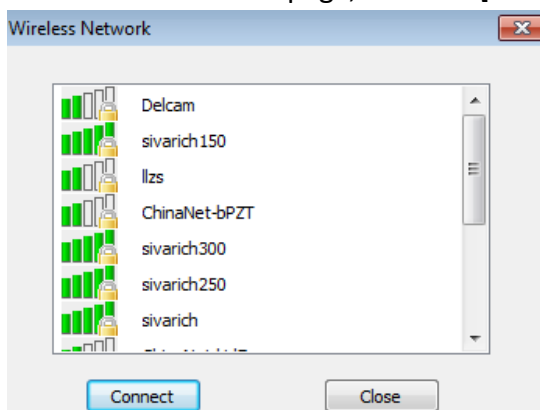
### **Configure the WiB Device Wireless Network Connection**

In the “Play” Window, open the “Setting” window by clicking the **[Setting]** button (  ).

Add your preferred wireless network to the “preferred network list” and switch the WiB device from AP mode to LAN mode.



In the “Wireless” tab page, click the **[Add]** button to show the wireless network list.



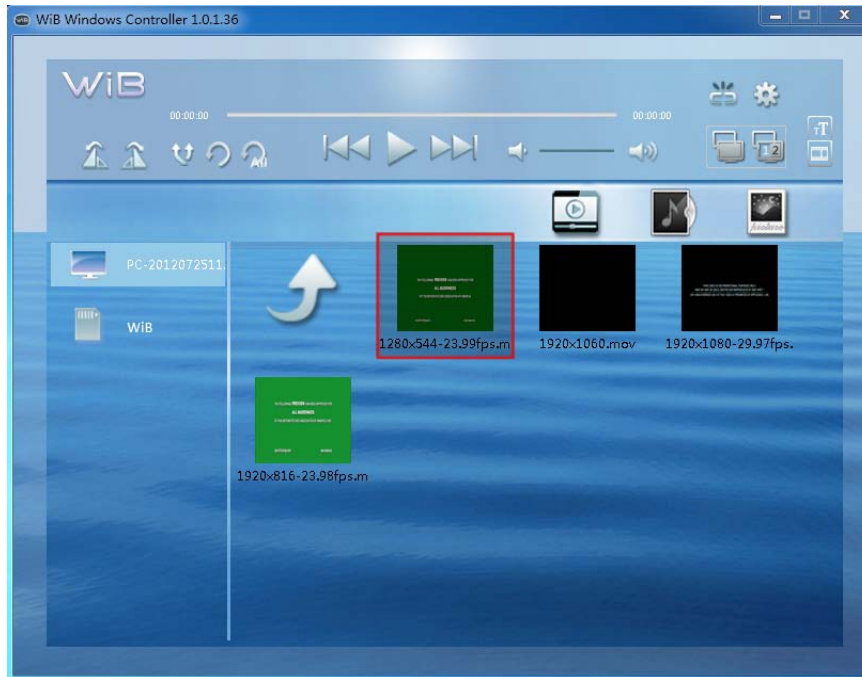
Select your preferred network and click the **[Connect]** button.




If the network is connected successfully, the WiB Windows Control application will disconnect from the device automatically and the WiB device will connect to the preferred network automatically.



## **Play Media Files on the WiB Device**

In the “Play” Window, you can play a media item on the WiB device by double clicking it.



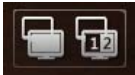
- Click the playback control buttons (  ) to control the media item playback.
- Click the loop mode buttons (  ) to switch the loop mode.
- Click the rotate buttons (  ) to rotate the photo.
- Switch media storage by clicking the item listed in the media server list.  
If the TF Card and USB storage device is inserted into the WiB device, these devices will be listed in the DMS list too.




Media Servers that meet the DLNA standard could also be found in this list. You can access the content provided by these servers.

- Click the category tab buttons (    ) to change the media category (Movie/Music/Photo).

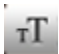

### **Mirror Content on the WiB Device**

In the “Play” window, you can click the [**Mirror**] button (  ) to show all the contents in your Windows computer on the WiB device.


There are 2 mirror types: Main Type and Extend Type. If Main Type is selected, the main screen content will be outputted to the WiB device; if Extend Type is selected, an extend screen will be enabled on the Windows PC and its content will be outputted to the WiB device.

Click the [**Main Type**] mirror button (  ) to enter the Mirror function and enable the Main Type. Click this button again to exit the Mirror function.

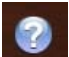
Click the [**Extend Type**] mirror button (  ) to enter the Mirror function and enable the Extend Type. Click this button again to exit the Mirror function.

- Click on the [**Text Mode**] button (  ) to get better performance.
- Click on the [**Video mode**] button (  ) to get better video content playback.

### **Disconnect from the WiB device**

In the “Play” window, you can disconnect the WiB device by clicking the [**Disconnect**] button (  ).

### **Get help**

You can click the [**Help**] button (  ) to visit the product’s online site.

## **WiB Android Control Application**

WiB Android Control Application runs on Android 2.2 or above systems. To get better performance, the device with 1GHz CPU is recommended.

### **Network Connection Guide**

When the application starts, the “Network Connection Guide” will be shown first. It will guide you on how to check the connected wireless network and how to connect to a specific wireless network.


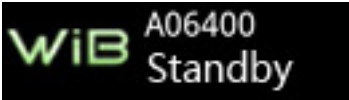
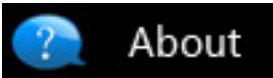



If the WiFi is connected, you can tap on the [**Start**] button to continue; otherwise, please follow the guide to set the WiFi function.

### **Connect to the WiB Device**

You can find all the WiB devices that connect to the same wireless network as the Android phone.



- Tap on the [Refresh WiB device list] button (  ) to refresh the device list.
- Tap on the WiB device list item to connect to the specific device.  

- Tap on the [FAQ] item to get help information.  

- Tap on the [Home] button (  ) to return to the guide screen.

### **Play Media File on the WiB Device**

Once the WiB device is successfully connected, the WiB control screen will be shown.

WiB User Manual

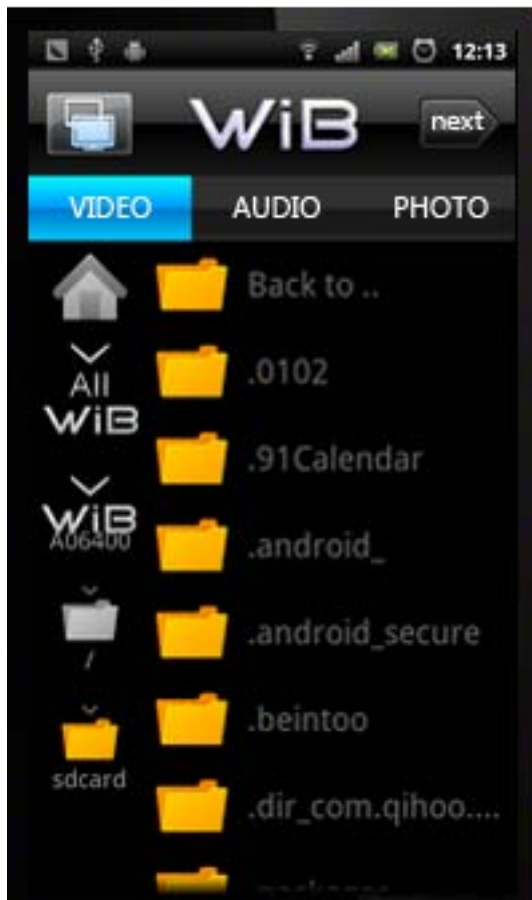
## WiB Android Control Application

You can play the media file on the WiB device or mirror screen content on WiB device.

On the “Control” screen, if the USB storage device and SD card have been connected to the WiB device, they will appear in the media server list.



You can select the media server by tapping on the corresponding item. All media files under the root directory of the media server will be listed.



- Tap on the category buttons which are on the top of the list.




- Tap on the device to return to the WiB Control Screen.




When you tap on a video or music item, the play screen below will be shown.



- Tap on the playback buttons to control the media item.
- Tap on the [Back] button (  ) or [Back] key on the Android Phone to return to the File List screen.

### **Mirror Content on the WiB device**

**Note:** *If you want to use the Mirror function on your Android device, please make sure that your Android device has been rooted (The root privilege can be granted to non-system applications).*

On the WiB Control screen or the File List screen, tap on the [Mirror] button (  ) to mirror screen content on the WiB device.

When the mirror function is enabled, you can press the [Home] key on your Android phone to switch to another application.

If you use the [Back] key on the Android phone to exit the WiB Android Control application, the mirror function will quit automatically.

## **DLNA Support**

The WiB device is compliant with the DLNA standard. You can access the WiB device from other DLNA-controlled applications, such as Windows Media Player, Clear.fi, Skifta etc.

When you use a DLNA-controlled application, you can find the WiB device as a play device (render device) in the device list. Then, the media streams could be transferred to a WiB device and playback.

For more details, you can get help information from the corresponding DLNA application.



## **Frequently Asked Questions**

- **Why can't my WiB device be connected to the wireless network automatically?**  
For first time users, the WiB device works in AP mode by default. You need to configure the wireless network setting for it. Please refer to the "Quick Start: WiB Windows Control"

- **Why can't I find my WiB device on the WiB Windows Control application?**  
Please make sure your Windows computer and the WiB device have been connected to the same wireless network. Otherwise, the WiB Windows Control application cannot find the device.

- **Why can't I play my media file on the WiB device using the WiB Windows Control application?**  
If you did not authorize the WiB Windows Control application to connect to the network, the Windows firewall or other third party firewall applications will block the communication between the application and the WiB device.

When you used it the first time, there should have been an alert that the WiB Windows Control application is requiring access to the network. If you did not authorize before, you need to run the firewall application and add exception settings for the WiB Windows Control application.

- **Why is it so hard for my WiB device to connect with the Windows Control application?**  
When the WiB device works in LAN mode, the connection would be vulnerable to any interference in WiFi signal. Please check the WiFi signal strength of the wireless network which is being used currently. If the signal is too weak, please change to another wireless network.

- **Why is video playback not fluent?**  
The communication quality depends on the status of the wireless network. If the network is heavily overloaded, the playback operation will suffer interference. Please reduce the network overload and play again.

- **Why does the Mirror function not work on my Android device?**  
If you want to use the Mirror function on your Android device, the device must be rooted—the root privilege can be granted to non-system applications. Please check your device and make sure that the device had been rooted.

## Warnings

---

Warning: Changes or modifications to this unit not expressly approved by the party responsible for compliance could void the user's authority to operate the equipment.

NOTE: This equipment has been tested and found to comply with the limits for a Class B digital device, pursuant to Part 15 of the FCC Rules. These limits are designed to provide reasonable protection against harmful interference in a residential installation. This equipment generates, uses and can radiate radio frequency energy and, if not installed and used in accordance with the instructions, may cause harmful interference to radio communications.

However, there is no guarantee that interference will not occur in a particular installation. If this equipment does cause harmful interference to radio or television reception, which can be determined by turning the equipment off and on, the user is encouraged to try to correct the interference by one or more of the following measures:

1. Reorient or relocate the receiving antenna.
2. Increase the separation between the equipment and receiver.
3. Connect the equipment into an outlet on a circuit different from that to which the receiver is connected.
4. Consult the dealer or an experienced radio/TV technician for help.

This device complies with Part 15 of the FCC Rules. Operation is subject to the following two conditions : (1) this device may not cause harmful interference, and (2) this device must accept any interference received, including interference that may cause undesired operation.

Shielded cables must be used with this unit to ensure compliance with the Class B FCC limits.

- To comply with FCC's RF radiation exposure limits for general population, this device must be installed and operated such that a minimum separation distance of 20cm is maintained between its antenna and all persons at all times. In addition, this device must not be collocated with any other antenna or transmitter.