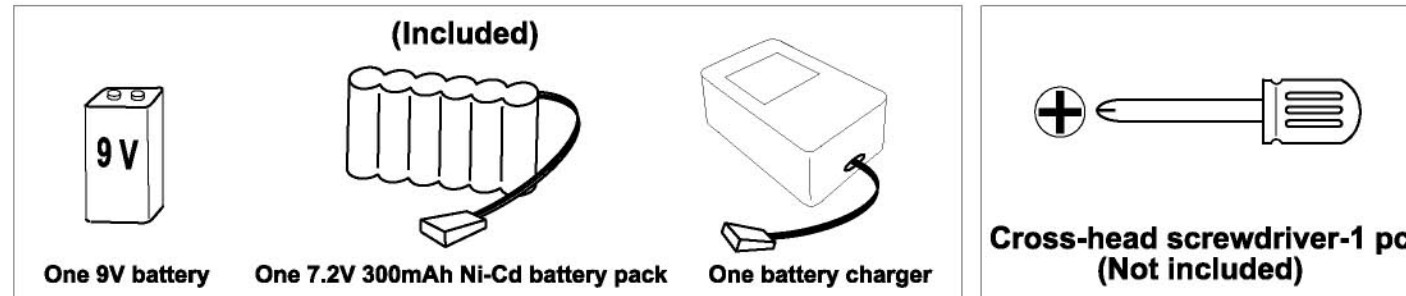


INSTRUCTION MANUAL

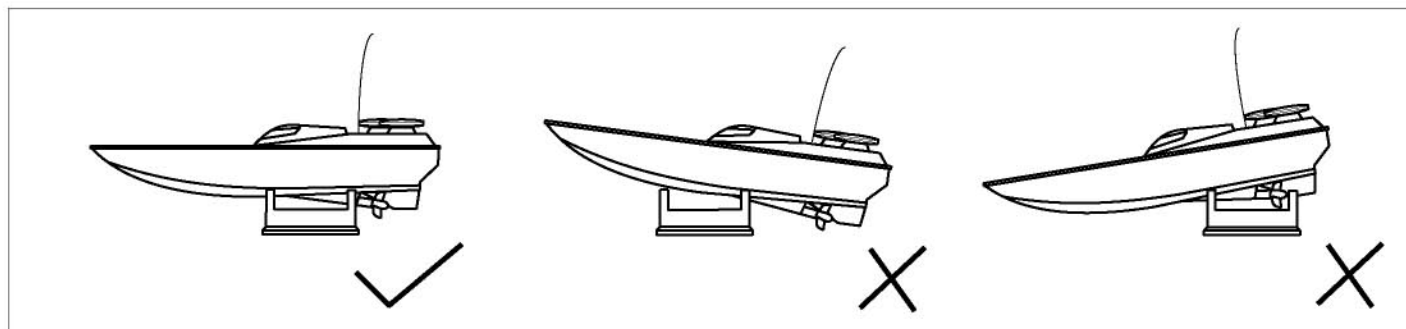
ITEM NO.2100-3

In order to get best performance of your boat, please read carefully this instruction before use.

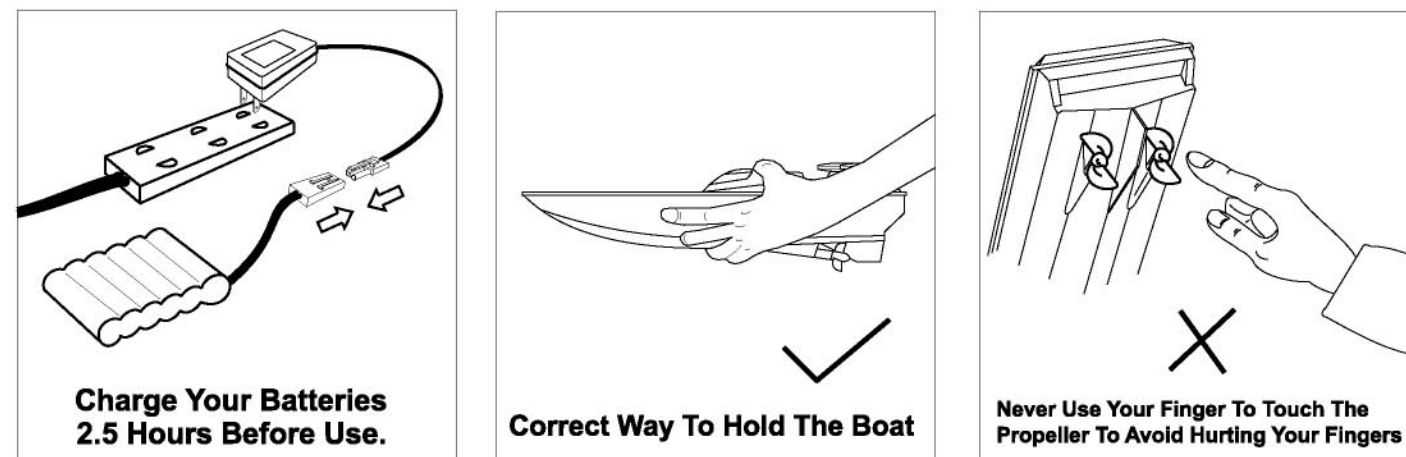
PREPARATION BEFORE USE:



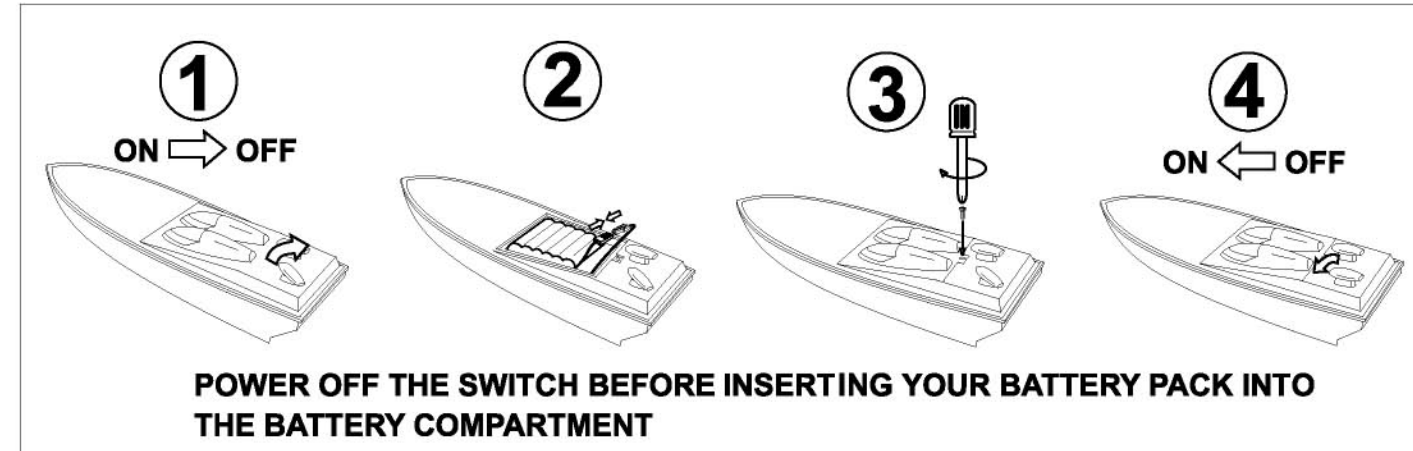
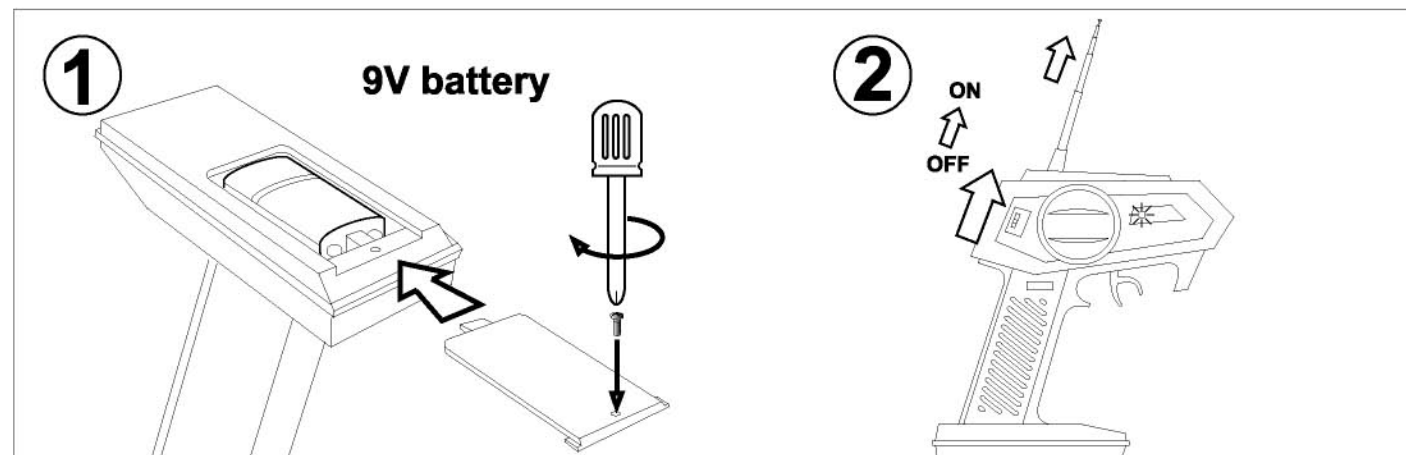
CORRECT POSITION ON THE STAND



CAUTIONS FOR SAFETY



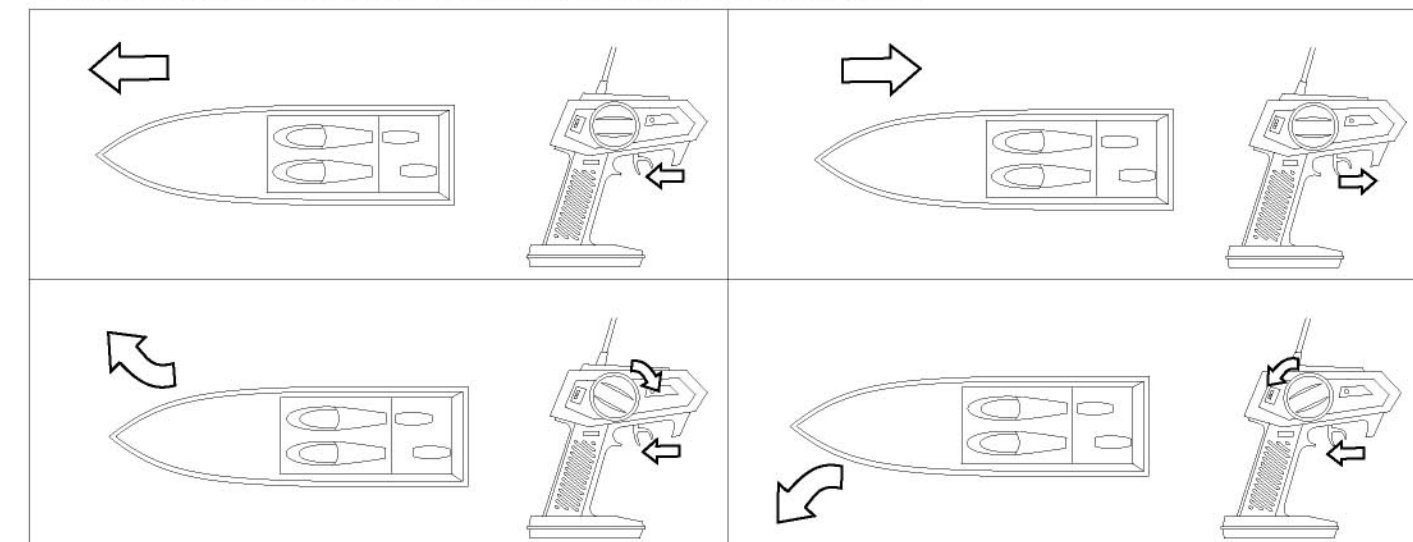
BE READY FOR SAILING



CAUTIONS FOR SAFETY

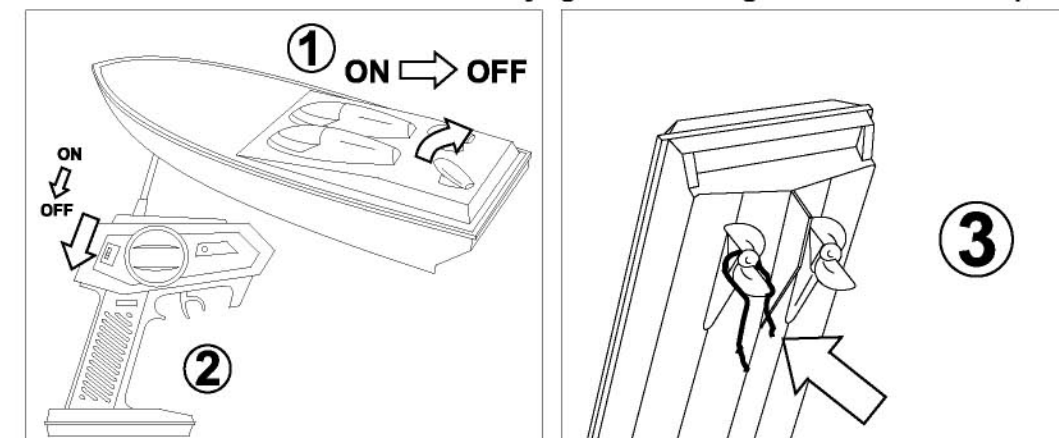
Do not operate this product under windy and stormy weather.
Do not drop this product onto the ground.
Do not operate this product in prohibited area.
Never swim to retrieve your boat.
Do not sail your boat in dirty water.
Do not try to crash your boat to any objects in the water.

CONTROL INSTRUCTION FOR A VOYAGE



IMPORTANT NOTES:

Turn Off The Switch Of The Boat Before Trying To Clean Things Attached To The Propeller.



NOTE: THE MANUFACTURER IS NOT RESPONSIBLE FOR ANY RADIO TV INTERFERENCE CAUSED BY UNAUTHORIZED MODIFICATIONS TO THIS EQUIPMENT. SUCH MODIFICATIONS COULD VOID THE USER'S AUTHORITY TO OPERATE THE EQUIPMENT.