

Figure 1 –  
Overall internal  
view of EUT -  
PWR-08-03  
with metal  
shielding  
removed

Note: This was  
the model of  
device tested

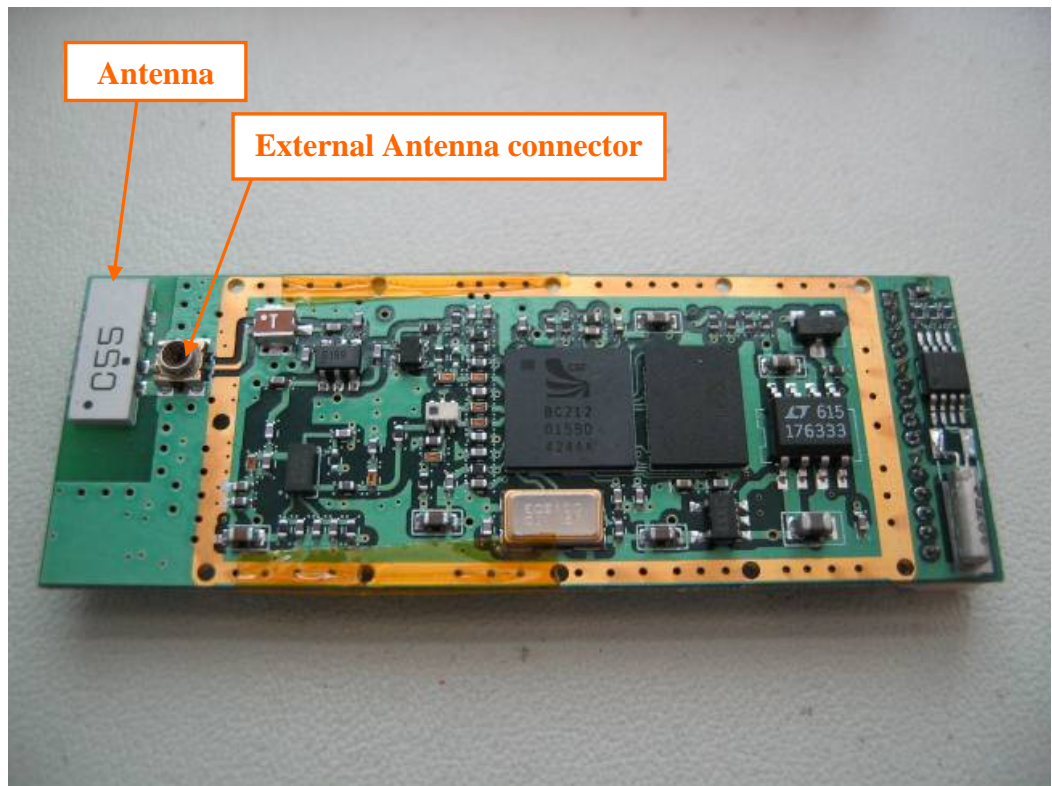


Figure 2 –  
Overall internal  
view of  
PWR-08-03 with  
metal shielding

Notes:

1. This was the  
model of device  
tested

2. The RF  
connector is  
normally not  
installed. It was  
installed in the  
test sample to  
allow direct  
measurements of  
the transmitter.

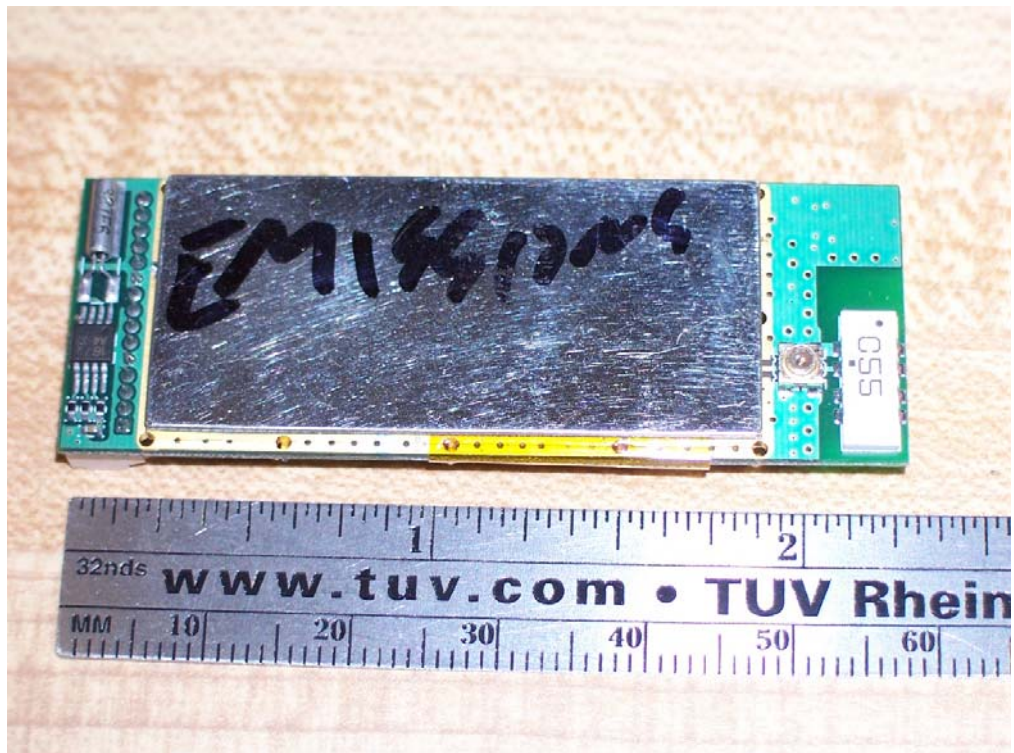


Figure 3 –  
Overall internal  
view of  
PWR-08-01/-02  
(Identical layout  
for both) with  
metal shielding  
removed

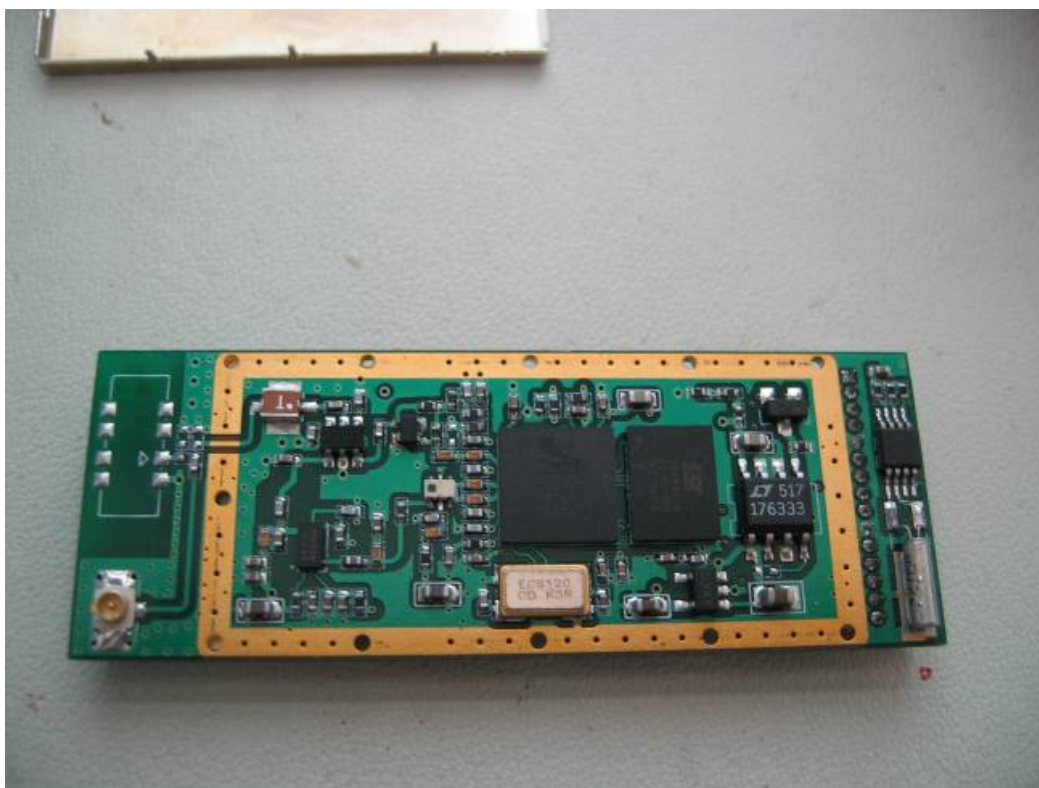


Figure 4 –  
Overall internal  
view of  
PWR-08-01/-02  
(Identical layout  
for both) with  
metal shielding

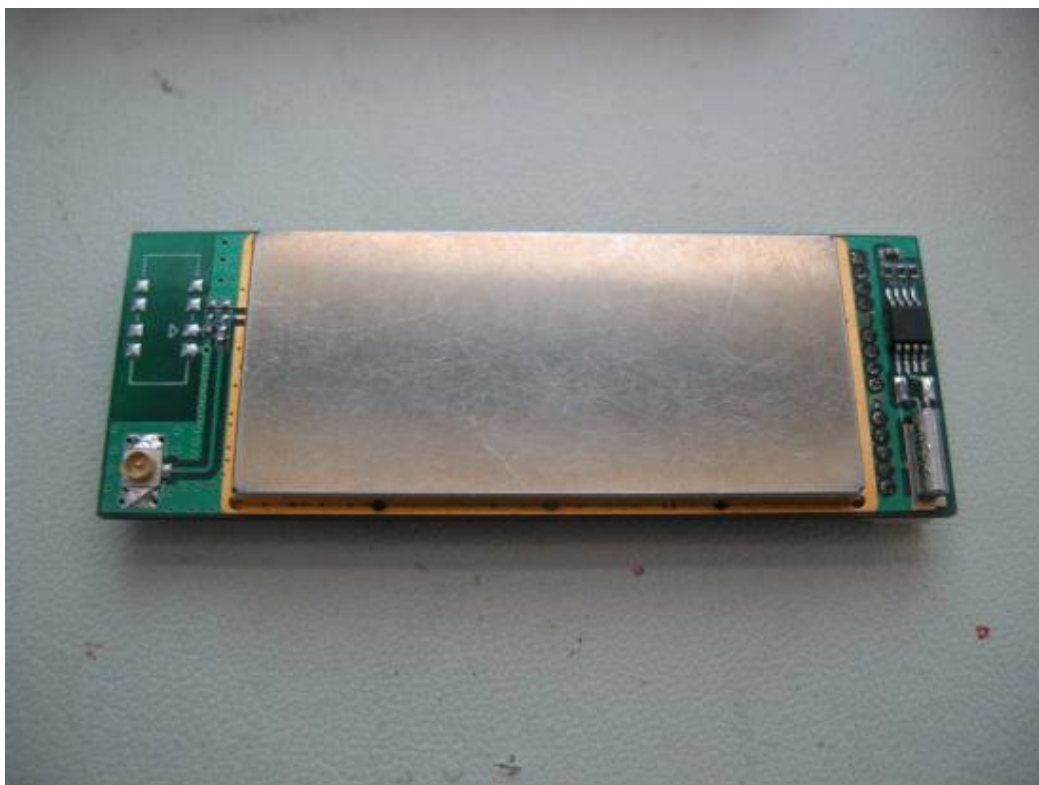


Figure 5 – View of  
PWR-08-01/-02  
(Identical layout  
for both models)



Figure 6 –  
Internal view of  
PWR-08-03 w/  
connector to  
connect to  
glucose meter.



Figure 7 –  
Internal view of  
PWR-08-03  
with battery  
connections and  
data connections  
to connect to  
glucose meter.

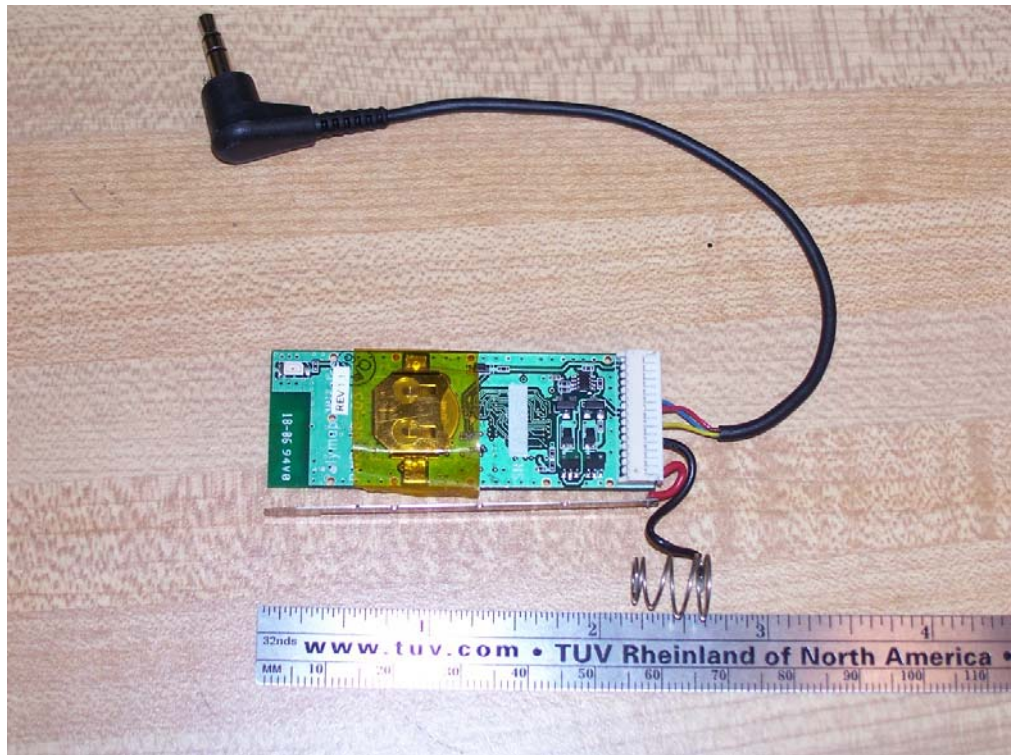


Figure 8 – View of  
external patch  
antenna for  
specific  
application(s)

