

SPECIFICATION FOR APPROVAL

Model Name : GET-080A

Part Number

Getac P/N: 412GA7500001

EMRight P/N: 98-692-12010

Ver. 0.1

Signature

EMRight approved	Customer approved
Signature:	Signature:
Date:	Date:

EMRight Technology Co., Ltd.

5F-11, No.18, Tai Yuen St., Jubei City, Hsinchu County 30265, Taiwan.

TEL: 03-5601151 FAX: 03-5601152

CONTENT

1. Product specifications.....	3
1.1 Specifications-----	3
1.2 Product Drawing -----	4
1.3 Digitizer board connection and interface pin define. -----	6
1.3.1 I2C Connector pin define. -----	6
1.3.2 I2C device information-----	6
1.3.3 Signal interface-----	7
1.4 Absolute Maximum Ratings-----	8
1.5 Electrical Characteristics -----	8
1.6 Power-on-Sequence-----	9
1.7 Product Function and Appearance Inspection Standard-----	10
2. Hazardous substance control criteria	11
3. Packing	11

Record of Revision

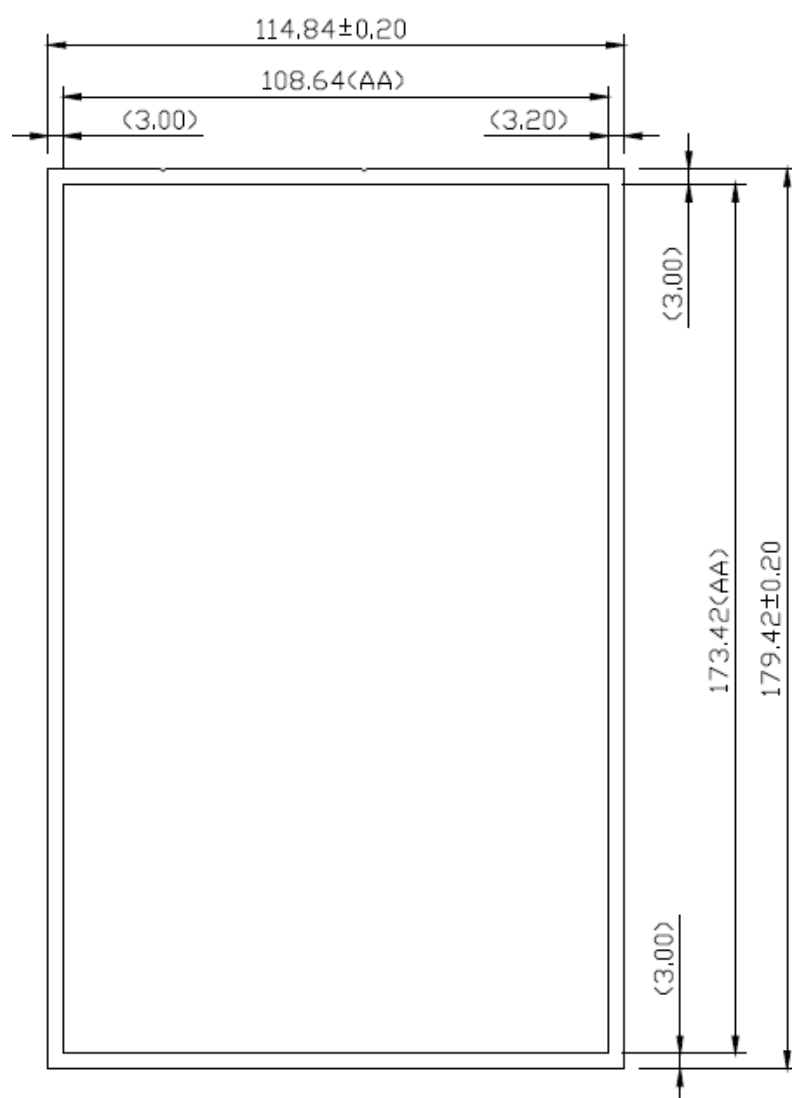
Rev.	Date	Description
V0.1	08/04/2023	Initial version

1. Product specifications

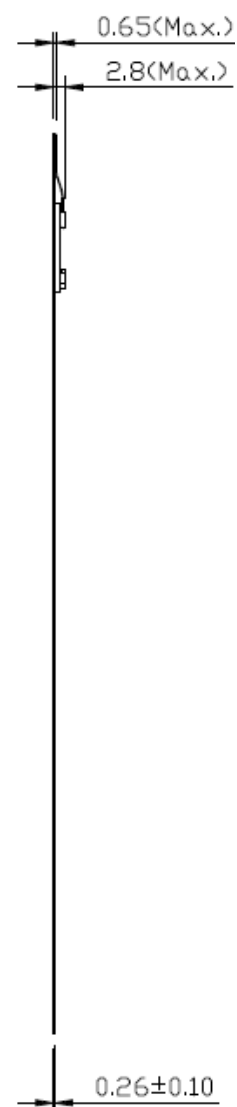
1.1 Specifications

Size	8"
Sensor Board Size	179.42mm * 114.84mm
Sensor Board Active Area Size	173.42mm * 108.64mm
Control Board Size	18mm * 40mm
Technology	Electromagnetic with Battery Free Pen
Coordinate Resolution	32768 x 32768
Pressure Resolution	4096 Levels
Report Rate	>133 PPS
Supply Voltage	3.3V \pm 5%
Coordinate Accuracy	\pm 1 mm
Coordinate Deviation When Tilting Pen (Pen tilt: \pm 50° from Vertical)	\pm 2 mm (Central Area) \pm 5 mm (Boundary and Corner Area)
Stylus	GT-090S
Working Frequency Range of Stylus	500 KHz ~ 511 KHz
Maximum Pen Tilt Range	\pm 50° from Vertical (except for corners)
Operating System	Android
Driver	Only I ² C Protocol
This specification is for standard module. For better performance, it needs to be customized with customer's system. Please avoid interfering around pen working frequency range.	

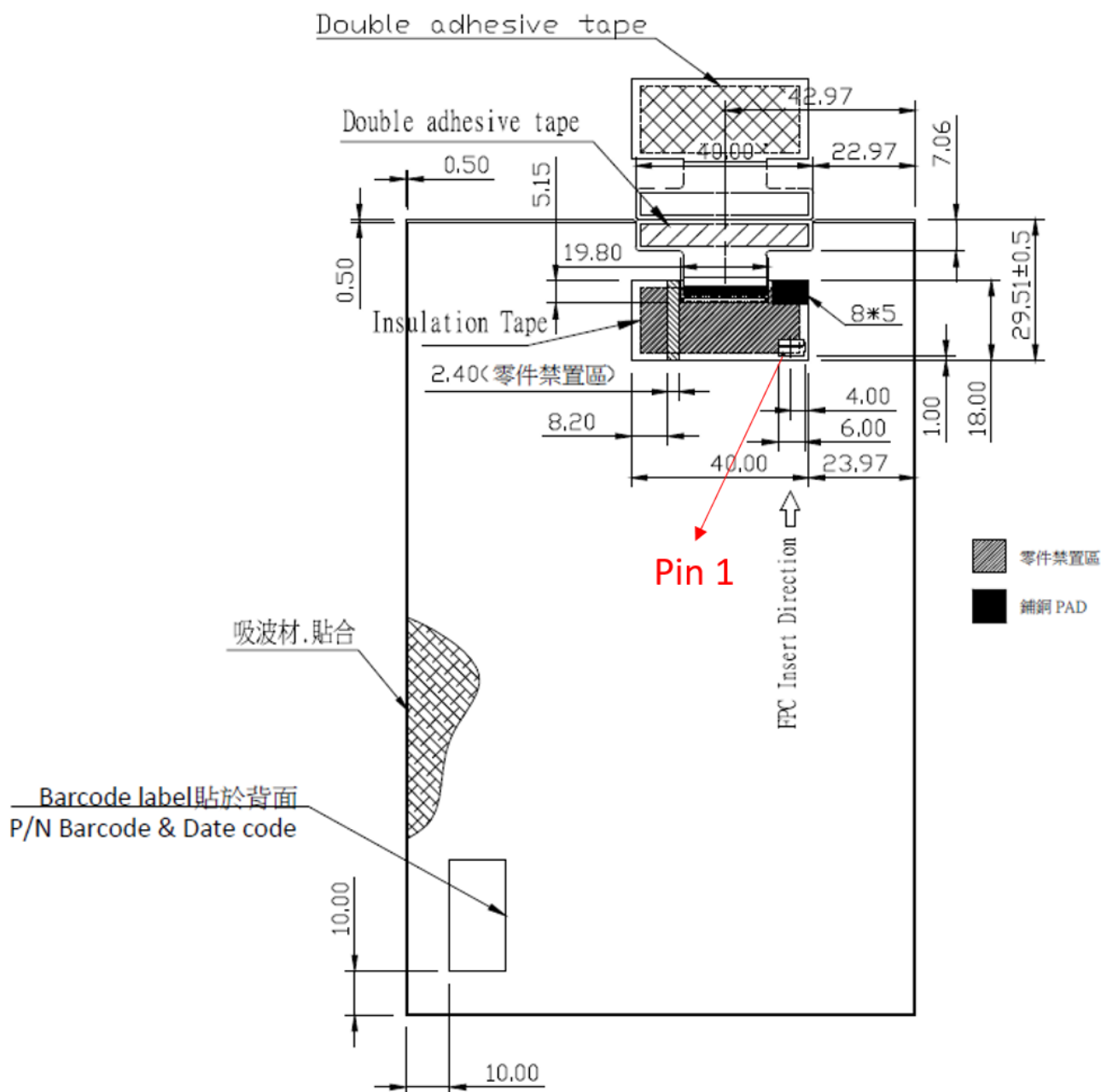
1.2 Product Drawing



TOP VIEW



SIDE VIEW



Note:

- 1.All data listed in specification is based on EMRight's measurement method.
- 2.This measurement is tested with EM module and pen only, no included other components.

1.3 Digitizer board connection and interface pin define.

1.3.1 I2C Connector pin define.

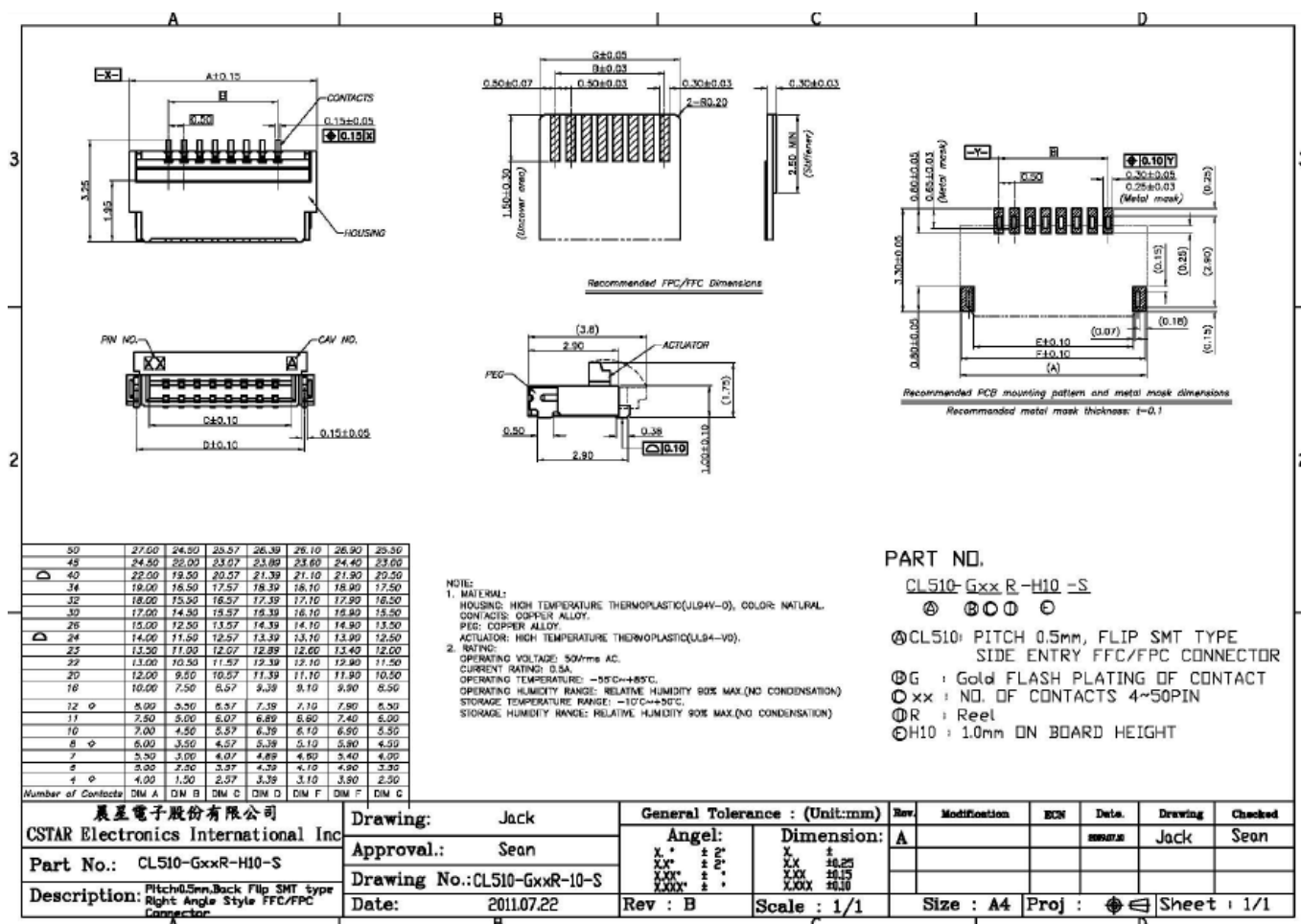
Pin	Define	Function	Description
1	NC	No Connection	N.C; reserve for 1.8V input
2	SCL	I ² C Clock Signal	Open drain. Must be pull -up resistor at host (+1.8V)
3	SDA	I ² C Data Signal	Open drain. Must be pull -up resistor at host (+1.8V)
4	INT	Interrupt	This is set to "Low" when I2C slave data ready to send Open drain. Must be pull -up resistor at host (+1.8V)
5	RST	Reset signal	RESET PIN (ACTIVE LOW) (+3.3V)
6	Digitizer Detect	Detect Digitizer	This pin is ground for host detect
7	3.3V	Power Supply	power supply voltage(+3.3V)
8	GND	Ground	Ground.

1.3.2 I2C device information

I2C Address	0X37
Addressing mode	7-bit
Connection speed	400khz
INT mode	falling edge
HID DESCRIPTOR Address	0x0002
Product ID	0xE692
Vendor ID	0x2C68

1.3.3 Signal interface

I2C Interface Connector: CL510-Gxx R- H10-S



1.4 Absolute Maximum Ratings

Item	Symbol	Min	Max	Unit	Checked Terminal
Applied Voltage	V _{CC}	-0.5	4.6	V	V _{CC} -GND
Input/ Output voltage	V _{IO}	GND -0.3	V _{CC} +0.3	V	IO-GND
Operating Surrounding Temperature	T _{OP}	-10	75	°C	
Storage Temperature	T _{STG}	-40	150	°C	

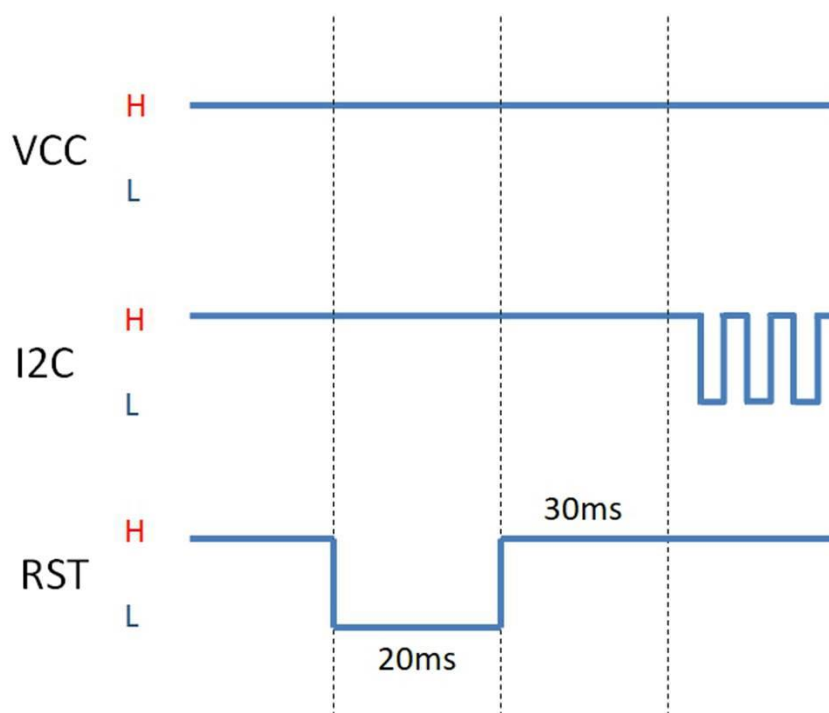
1.5 Electrical Characteristics

Power Consumption

Item	Min.	Typ.	Max.	Unit.	Remark
High scan mode	-	33	-	mA	-
Low scan mode	-	22	-	mA	-

1.6 ASIC Power-on-Sequence

Step1	SDA = High SCL = High INT = High RESET = High
Step2	RESET = LOW
Step3	Wait 20 ms
Step4	RESET = High
Step5	Wait 30ms
Step6	Send I2C Stop condition
Step7	Wait 20 ms
Step8	Send Get Firmware Info command (0xAA). Optional
Step9	Initial sequence finished, wait INT to receive normal coordinate report



1.7 Product Function and Appearance Inspection Standard

No	Disadvantages name	Inspection specifications		Notes
1	Poor function	Based on EMRight's measurement method	Not allowed	
2	Inconsistent size	According to the approval sample and drawing.	Not allowed	
3	Cracking	Soft board conductor cracks, the conductor must not break.	Not allowed	
4	Folds	Adhesive irregularities cause surface protrusions: Fold length > 10mm	Not allowed	
5	Layers	Layering between soft board and reinforcing board.	Not allowed	
6	Burr	Cut off surface.	Not allowed	
7	Breakage	Metal sheets aluminum foil	Not allowed	
8	Printing	1. Fonts and graphics should be clearly and identified.	Visual	
		2. Must be in complete word and shape.		
		3. Fonts and graphics should not be distorted or misrepresented.		
		4. Printing missing or smeared characters, delamination are not accepted.		

Inspection conditions:

1. Visual observation of 3-5 seconds (Inspector is not colorblind, and bare or vision correction in 1.0 percent).
2. Check for ambient lighting in 500LUX Shang, daylight color fluorescent lamp light prevails.
3. Items to be checked should be placed away from the eyes of about 30 ~ 45 parts per location, around 45-degree angle range, to specified depending on examining or measuring tool-check it.

2. Hazardous substance control criteria

This product is compliant with RoHS Directive

3. Packing

