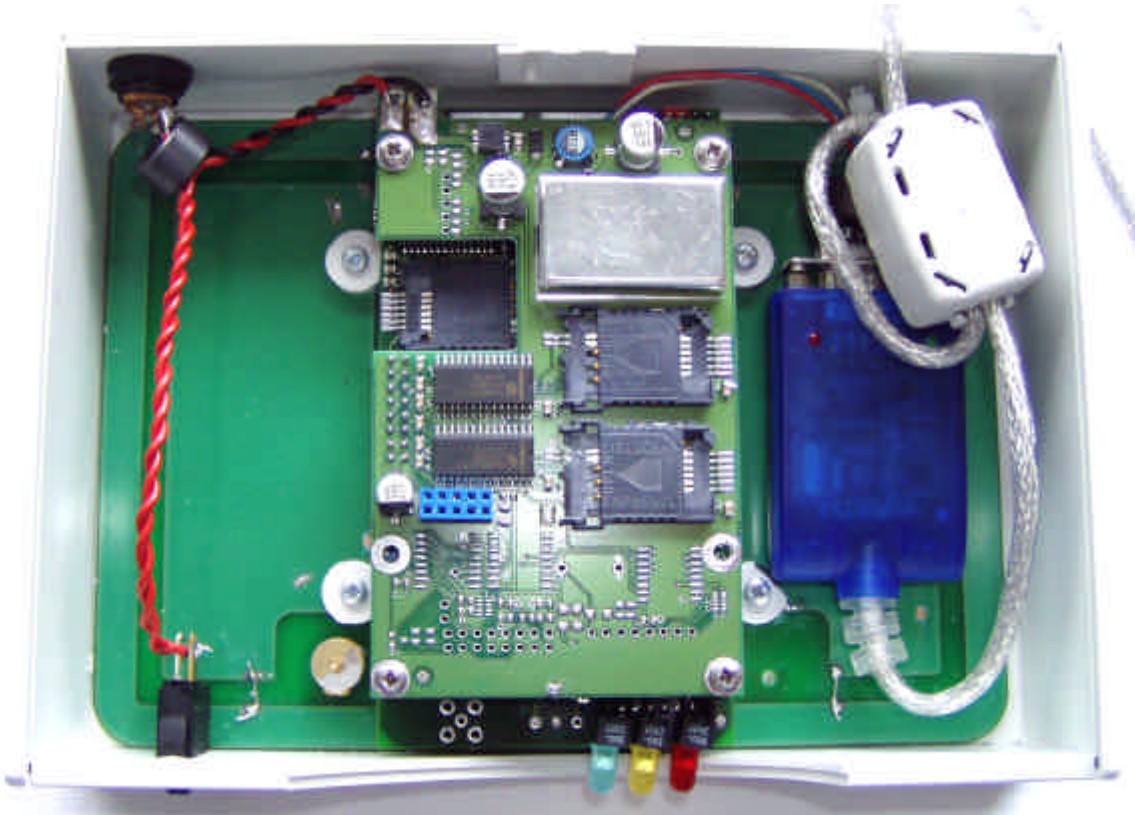
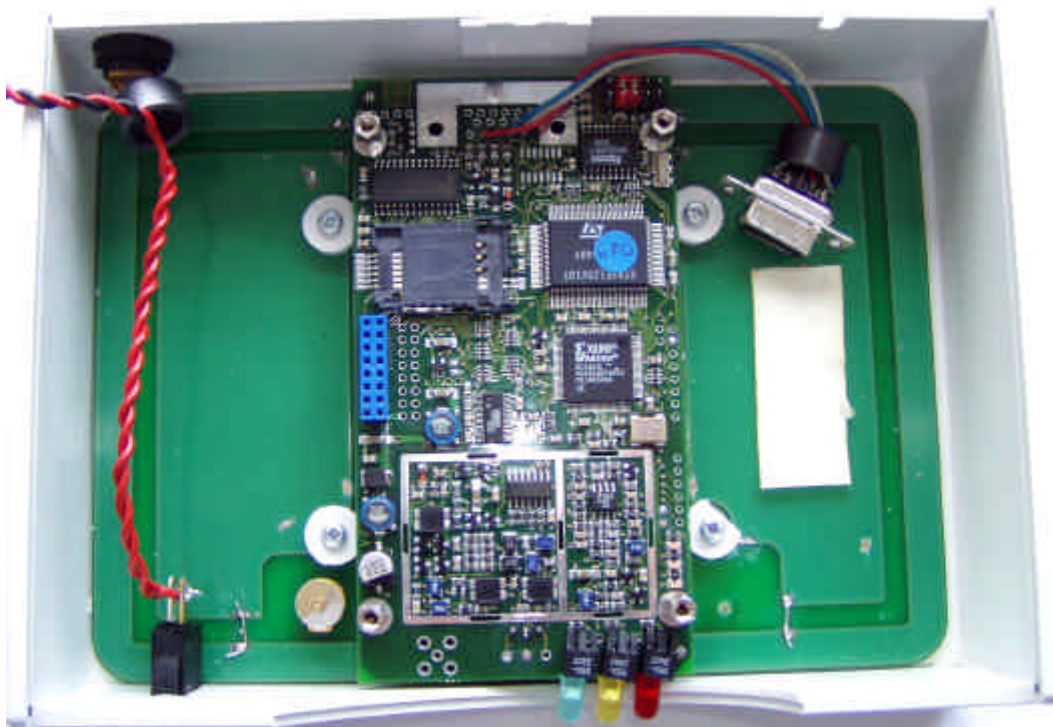


1 INTERNAL PHOTOS OF TESTED EUT

1.1 General views of the LSP2



Rear face, cover removed.

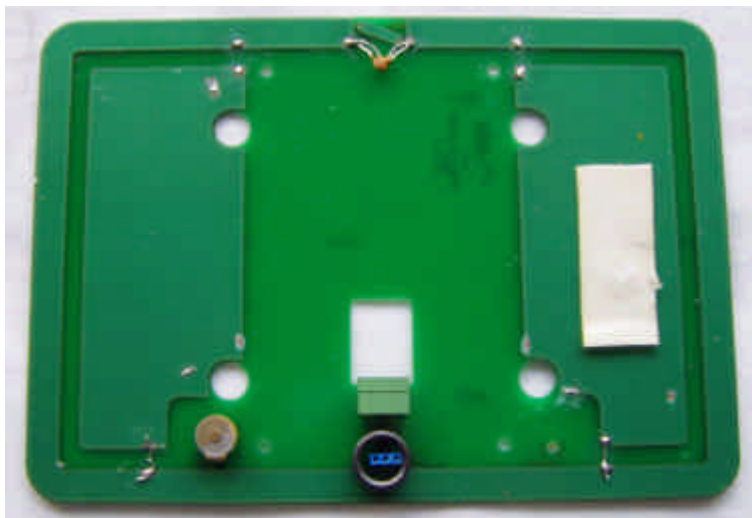


Daughter board and RS232/USB converter removed



Mother board removed

1.2 Antenna views

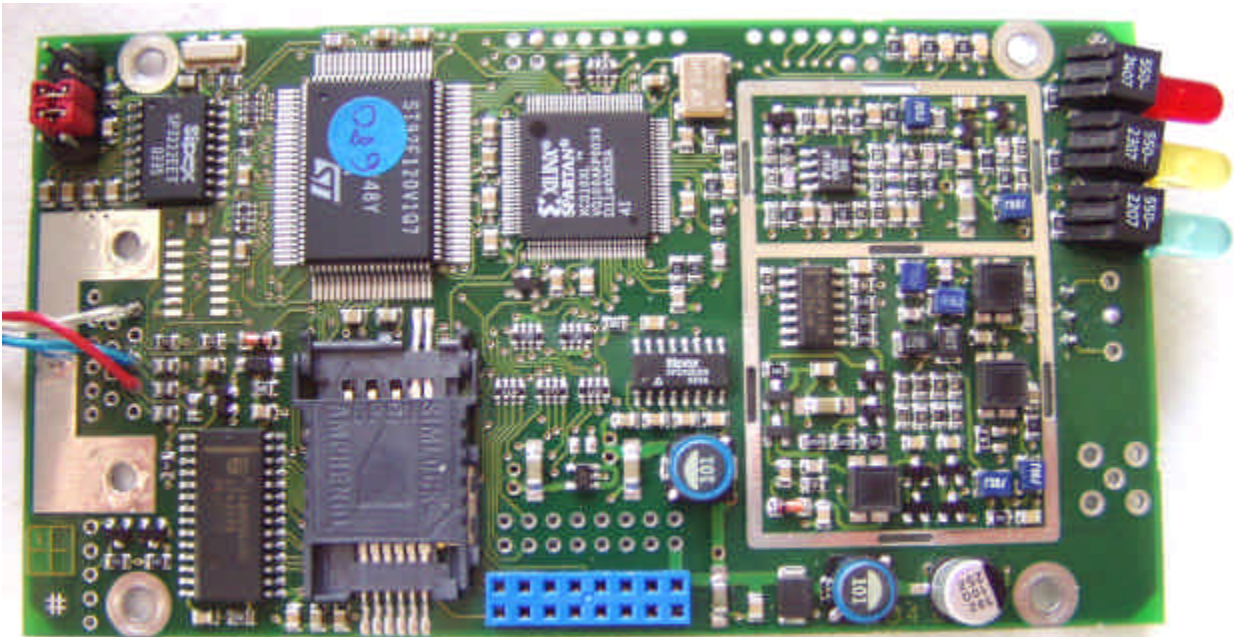


Front face



Rear face

1.3 Mother board views

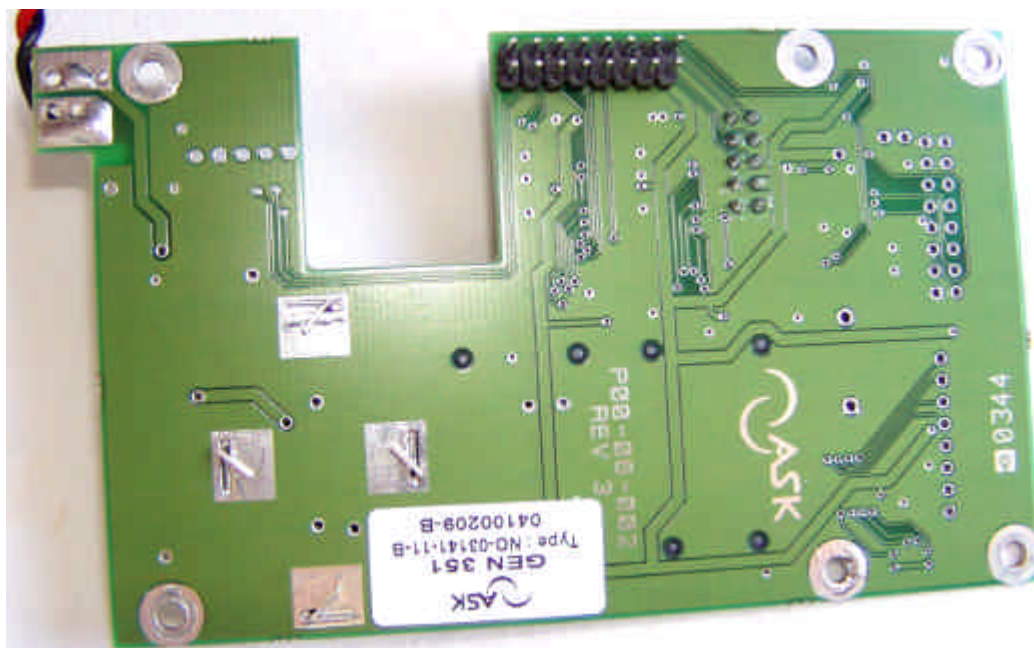
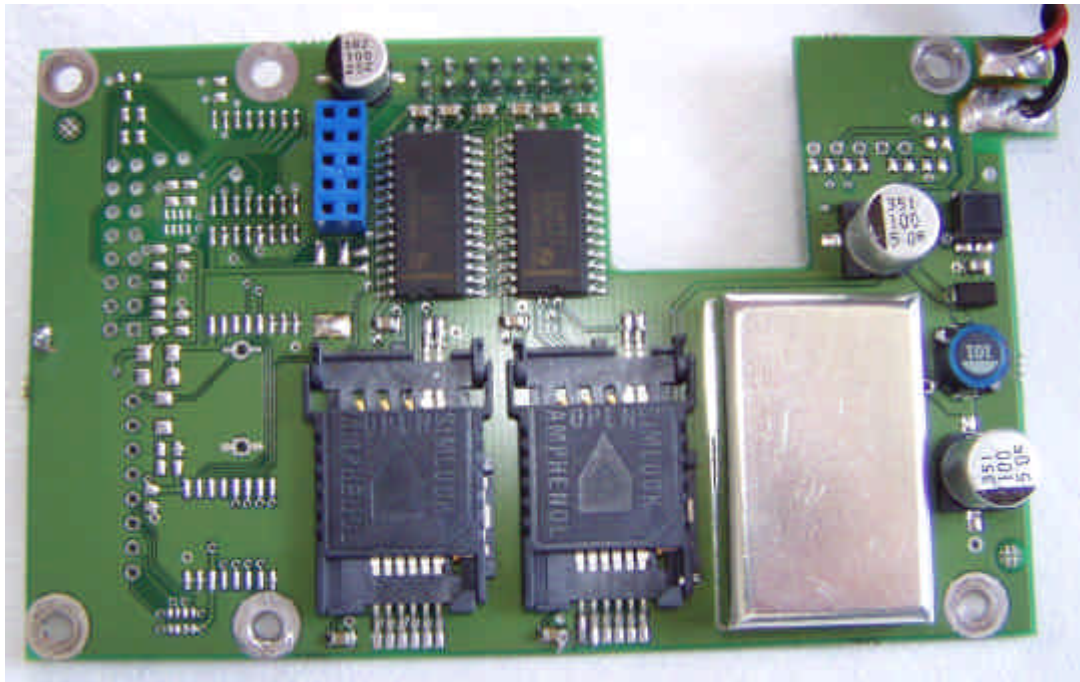


front face



rear face

1.4 Daughter board views

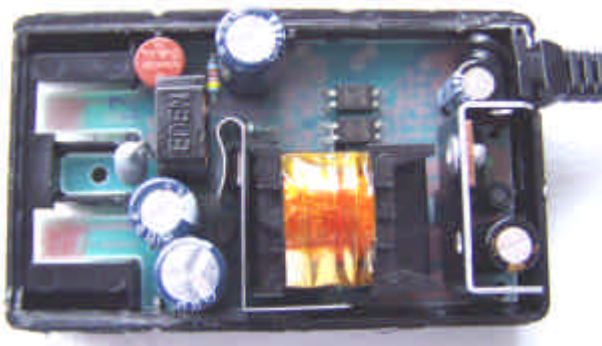


1.5 Views of the power supply

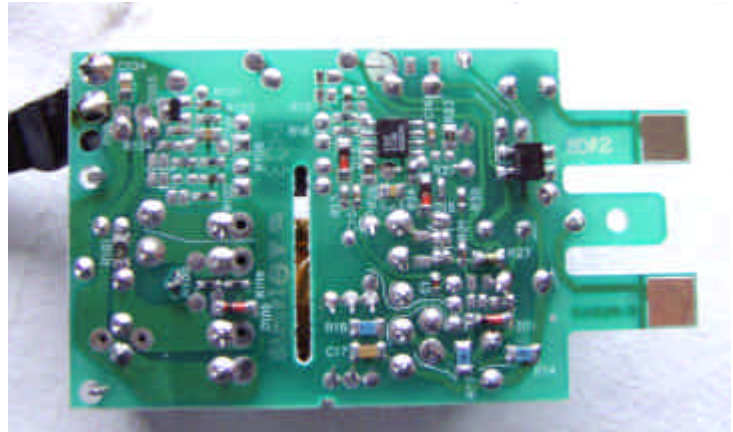
1.5.1 General view



1.5.2 Internal views, cover removed

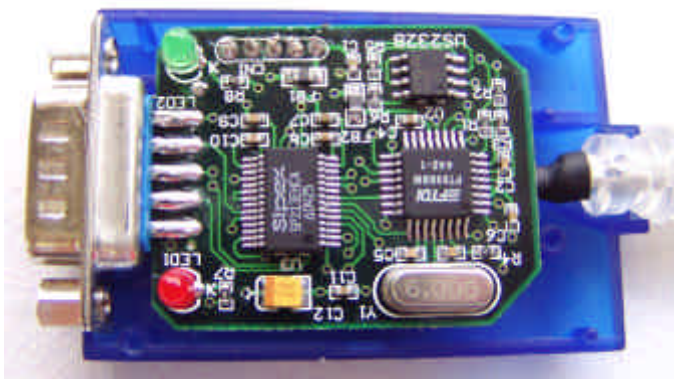


Font face

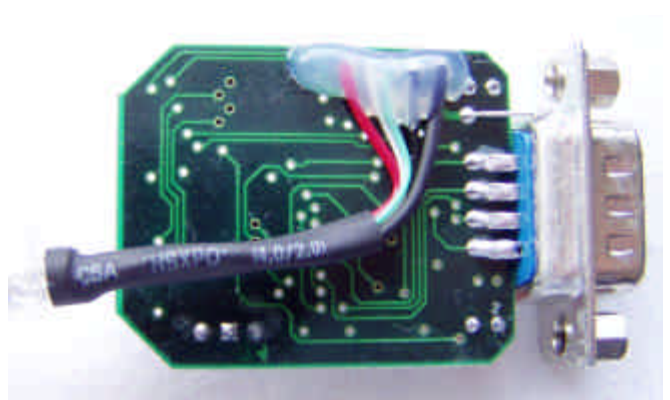


Rear face

1.6 RS232/USB converter



Front view



Rear view