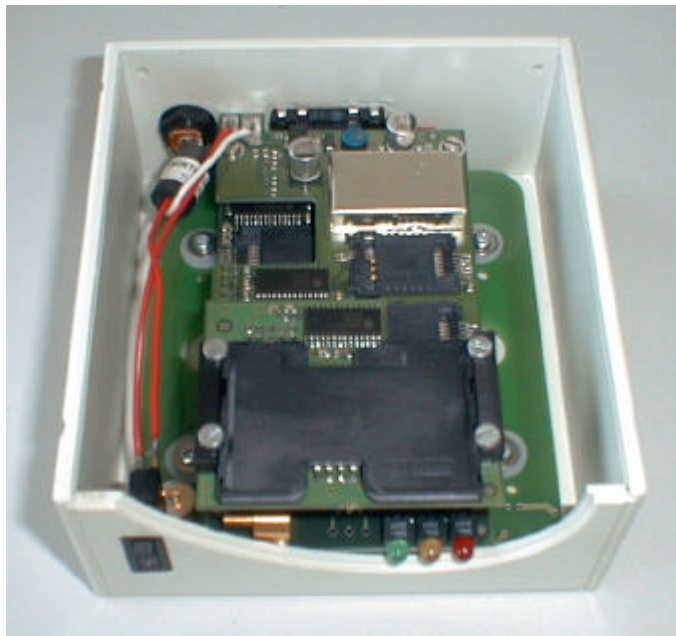
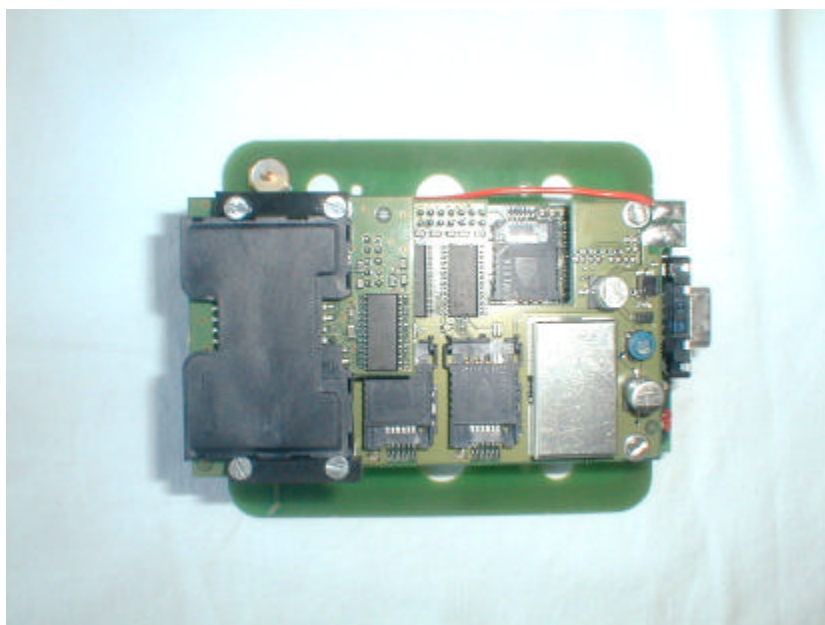


1 INTERNAL PHOTOS OF TESTED EUT

1.1 General view of equipment



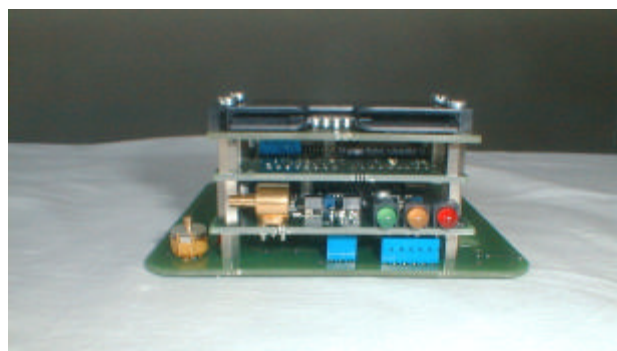
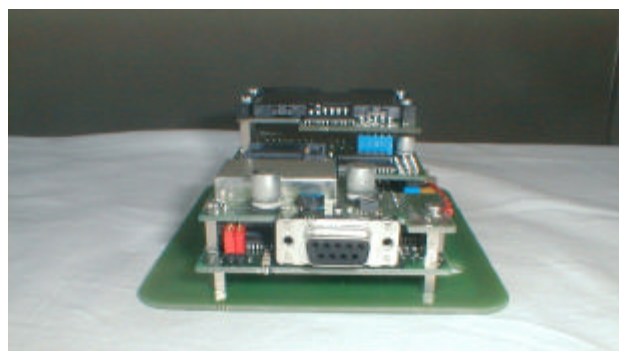
1.2 General view of assembled boards



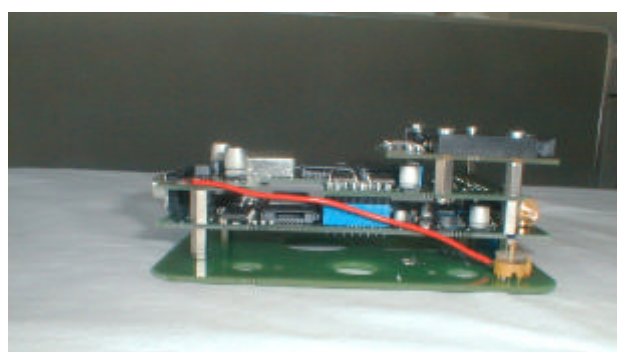
Assembled boards, upper face.



Assembled boards, underside view (antenna).

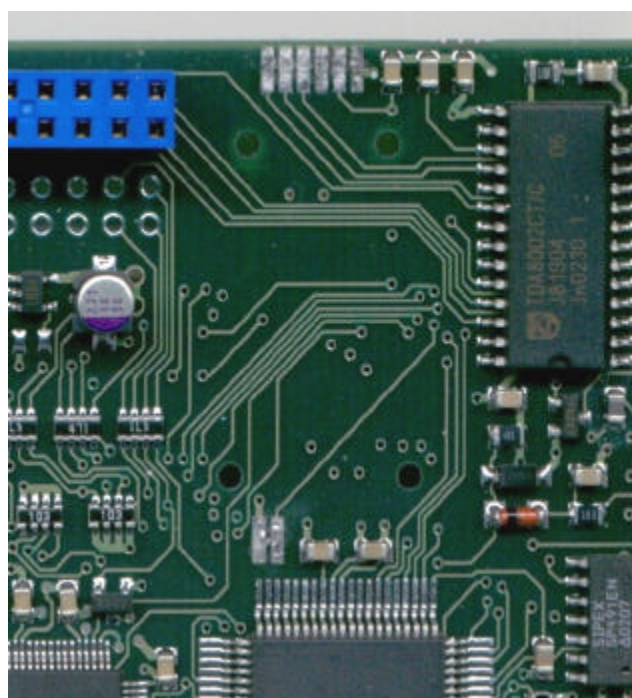
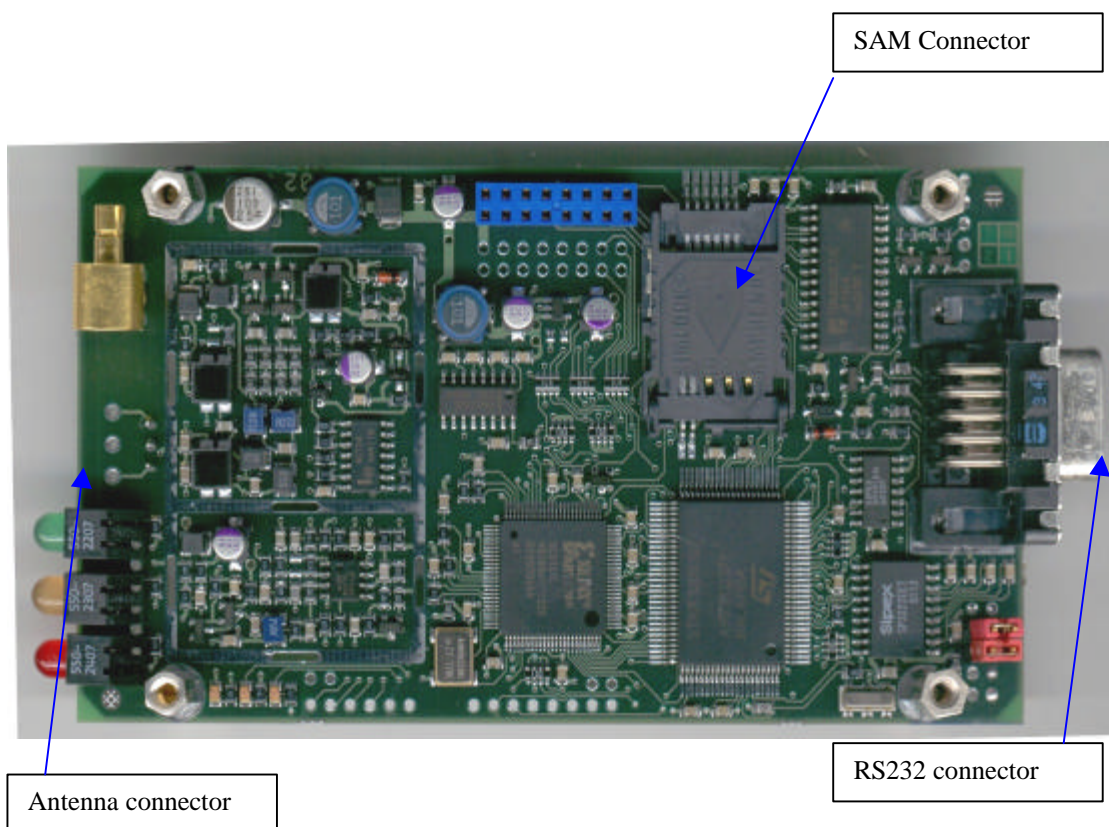


Assembled boards, connector sides



Assembled boards, left and right sides

1.3 PCB view of GEN 320-GEN325 boards (couplers boards)

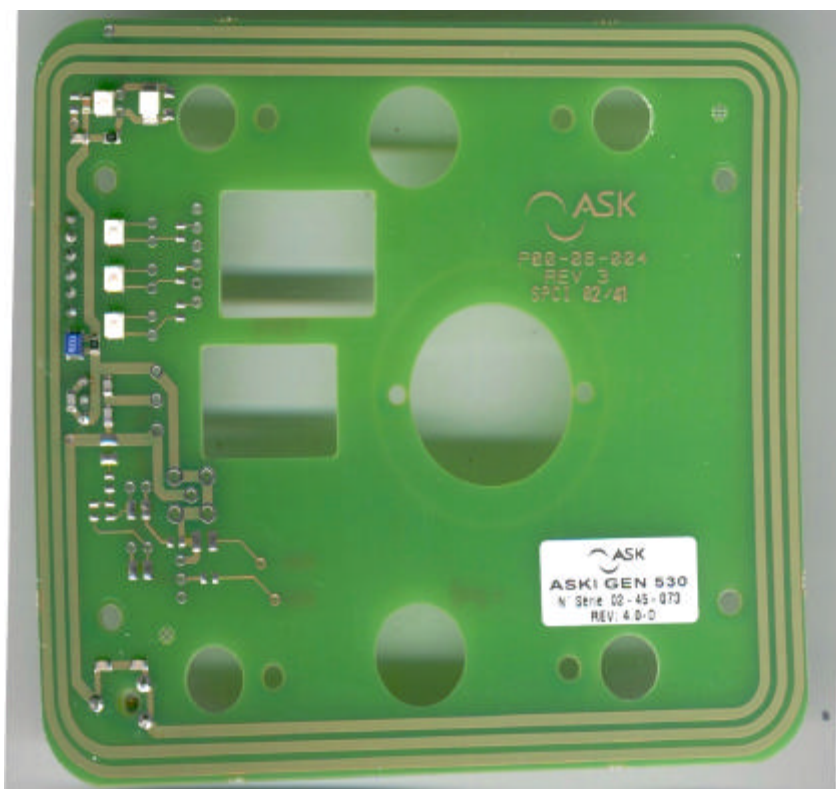


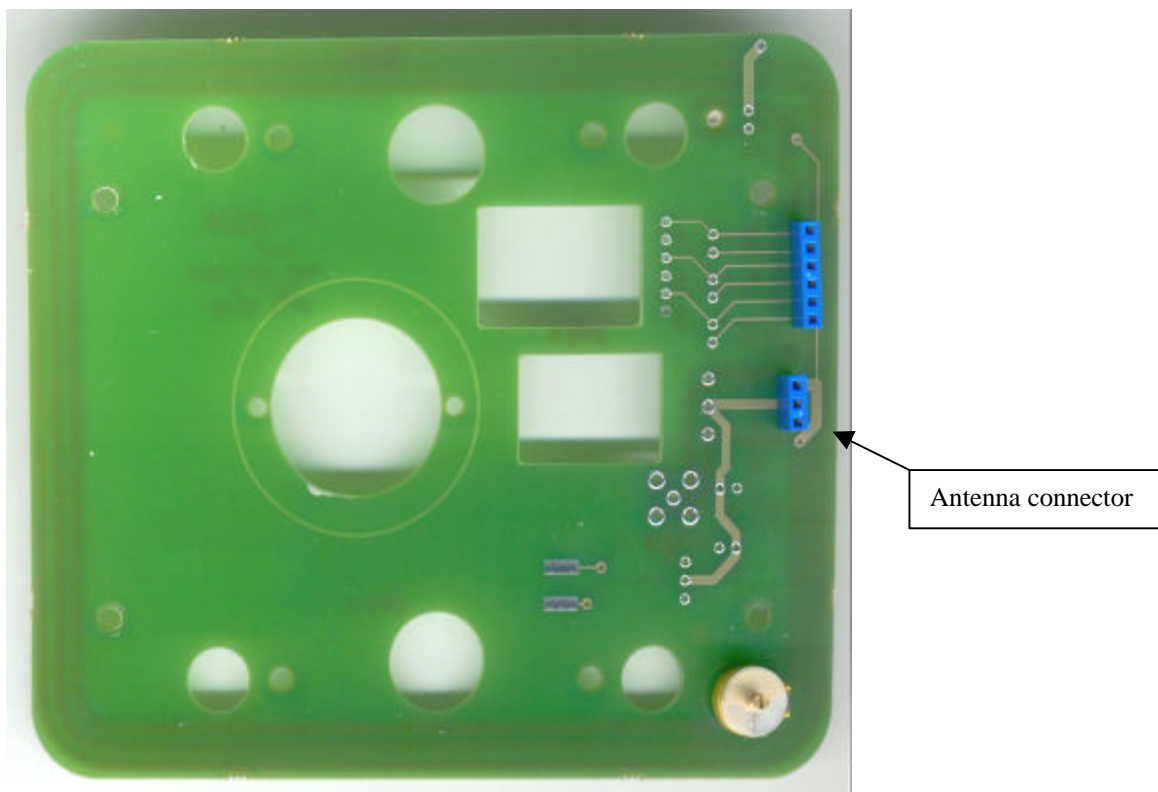
Detail view (SAM connector removed)



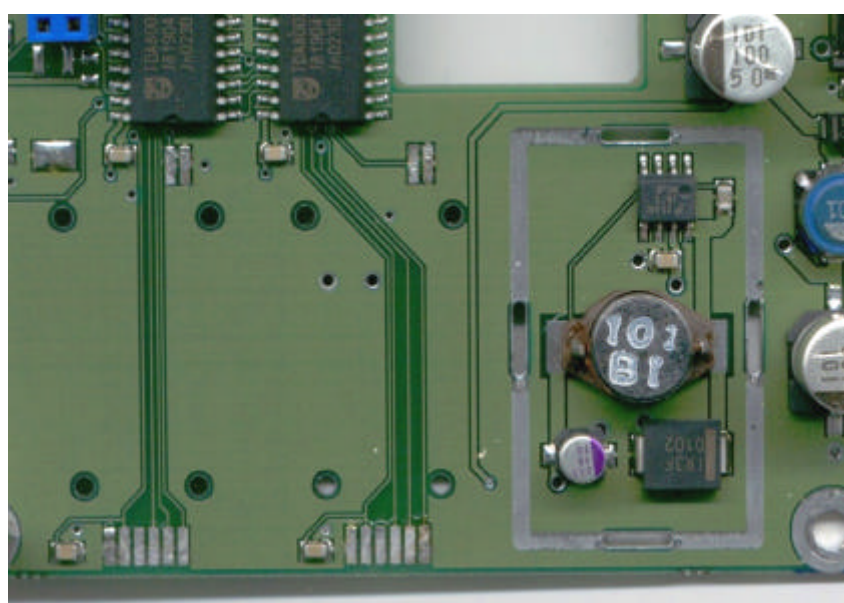
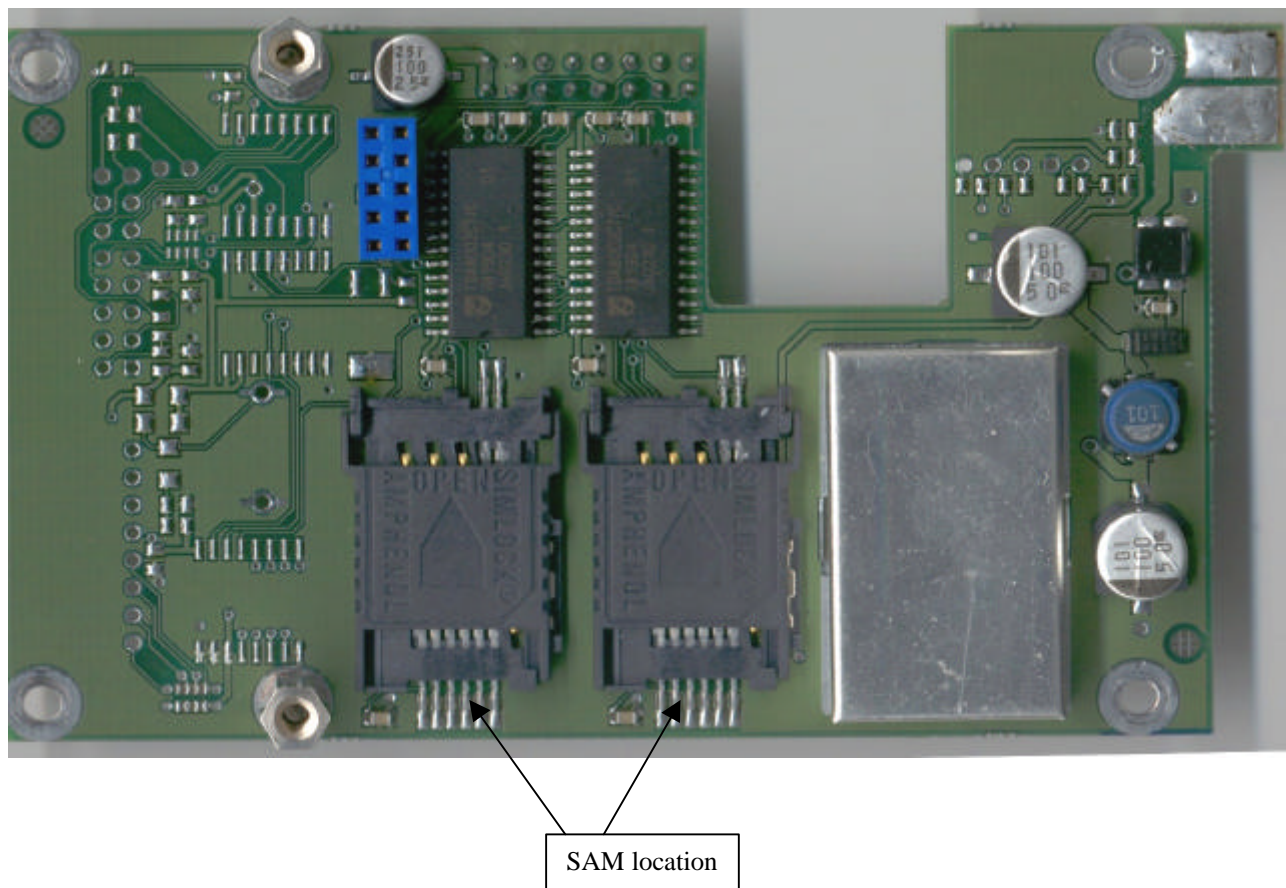
RC500 chip (GEN 325 board)

1.4 PCB view of GEN 530 board (antenna board)



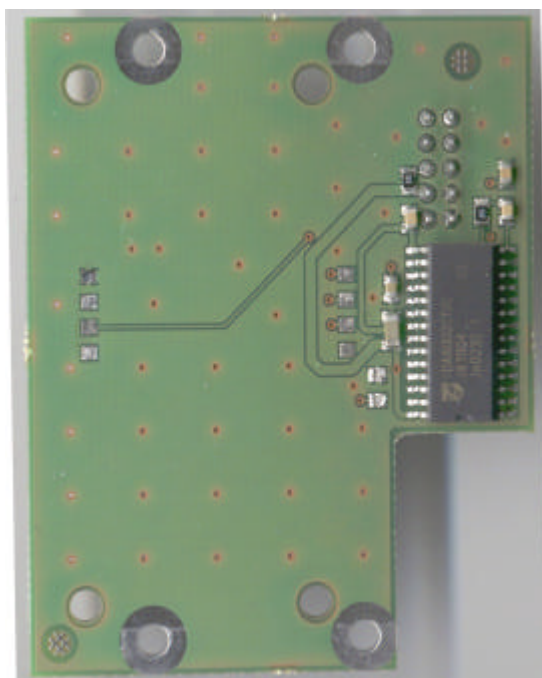
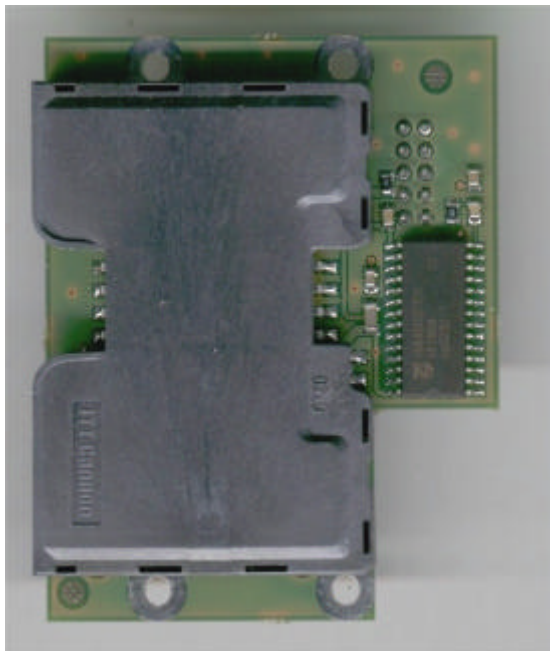


1.5 PCB view of GEN 351 board (DC conversion and SAM extension)

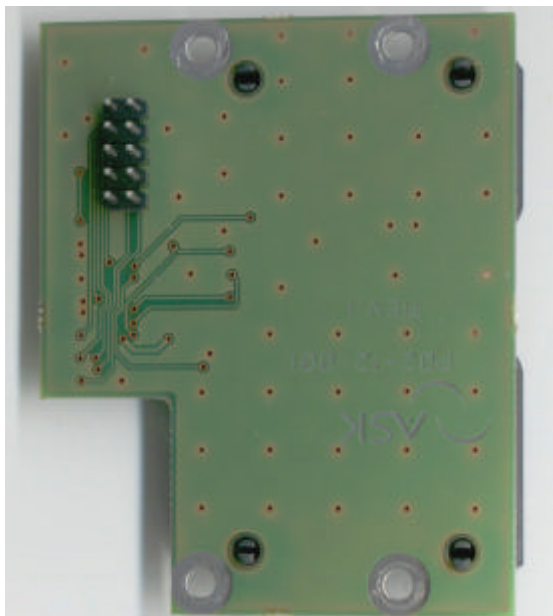


Detail view (SAM connectors and EMI cover removed)

1.6 PCB view of GEN 362 board (Contact card interface board)



Contact card removed



1.7 Internal photo of linear power supply

