

NEOVIA 40" LCD TV OWNER'S INSTRUCTION

IMAGE ADJUSTMENT

ENGLISH



This is the general image adjustment layout which can be seen when selecting "IMAGE ADJUSTMENT" in the on screen display (OSD).

Here the adjustment can be made to the displays horizontal and vertical position and image size if the display seems not in correct position.

- Press the MENU button.
- Press left cursor to select "IMG.ADJ".
- Press down cursor to select functions within "IMG.ADJ" MENU.
- Press right / left cursor to change the settings.
- Press MENU or ENTER to save.
- Press MENU to escape OSD.
- ACCESS IMG.ADJ.
- Adjust the chosen function.
- Press ENTER to Save.
- Press EXIT to turn the OSD Off.

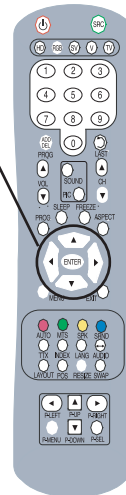
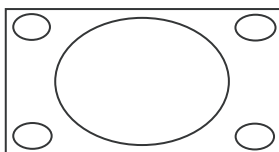
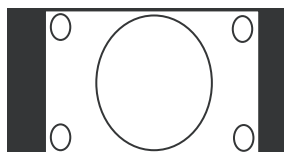


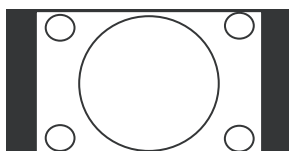
Image Size



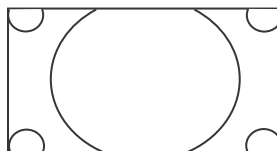
FILL ALL mode
will display the picture at its maximum size but with slight elongation



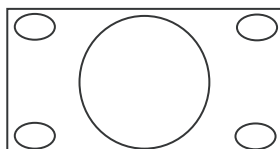
ASPECT RATIO mode
the display is stretched vertically.



NORMAL mode
display is set at original 4:3



ZOOM mode
magnifies the central section of the picture



WIDE mode
The display is stretched at the edges.

H Position / V Position

To alter the picture position vertically and/or horizontally.

AUTO

Only valid in the Analog RGB mode to AUTO set Picture position.

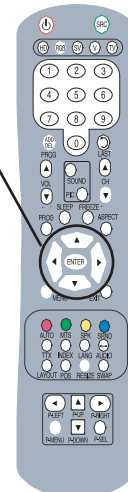
Freeze Frame

To temporarily freeze current viewing picture (prolong freeze can permanently burned to the LCD panel hence it is not recommended for long period of time).

40" LCD TV OWNER'S INSTRUCTION **NEOVIA****SET UP**

This is the general "SETUP" layout which can be seen when selecting "SETUP" in the on screen display (OSD).

- Press the MENU button.
- Press left cursor to select "SET UP".
- Press down cursor to select functions within "SETUP" MENU.
- Press right / left cursor to change the settings.
- Press MENU or ENTER to save.
- Press MENU to escape OSD.
- ACCESS SETUP.
- Adjust the chosen function.
- Press ENTER to save.
- Press EXIT to turn the OSD Off.



ENGLISH

LANGUAGE:

Various OSD Language setting has been provided for ease of use.

ENGLISH → FRENCH → GERMAN → ITALIAN → PORTUGUESE → SPANISH → DUTCH

Hot key provided in the remote control for quick and convenient setting.

OSD

TRANSPARENCY: To change the black background level.

TIMEOUT: The time when OSD display to turn itself off when not been pressed for selected period of time.

CLOCK

TIME : Displays current time when set.

TIME ON : The time when TV to turn itself on.

TIME OFF : The time when TV to turn itself off.

CHANNEL : The channel that the TV to turn itself on.

VOLUME : The level of the speaker sound when the TV turns on.

SLEEP TIME : Timer setting for when the display to be turned off.

The timer can be set for every 10 minutes interval for up to 180 minutes.

(Hot key is provided in the remote control for quick and convenient setting.)

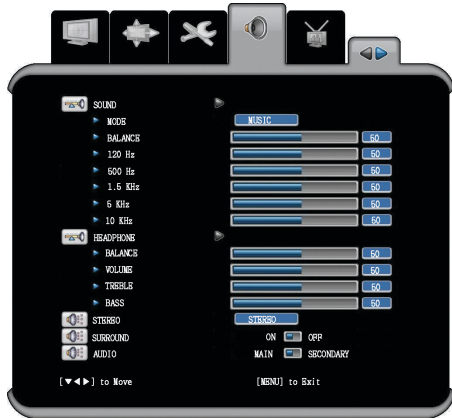
RESET

Returns OSD setting to factory default setting.

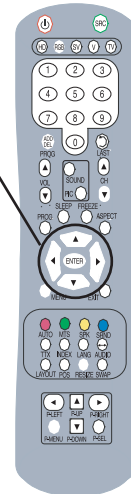
NEOVIA 40" LCD TV OWNER'S INSTRUCTION

AUDIO SETTING

ENGLISH



- Press the MENU button.
- Press left cursor to select "AUDIO"
- Press down cursor to select functions within "AUDIO" menu
- Press right / left cursor to change the settings.
- Press MENU or ENTER to save.
- Press MENU to escape OSD.
- ACCESS AUDIO.
- Adjust the chosen function.
- Press ENTER to save.
- Press EXIT to turn the OSD Off.



This is the general "AUDIO" layout which can be seen when selecting "AUDIO" in the on screen display (OSD).

SOUND

MODE

Preset equalizer values, Normal → Music → News → Movie → User.

BALANCE

This is to change the sound output level for left and right.

EQUALIZER

This has been provided to alter the output sound by the user when set as "USER" in mode setting.

HEAD PHONE

Balance : This is to change the sound output level for left and right.

Volume : To change the sound output level.

Treble : Change the level of the sound output level around 10KHz frequency area.

Bass : Change the level of the sound output around 100hertz frequency area.

STEREO

Output sound modes stereo → Mono, Bilingual → Dual A → Dual B

Bilingual, Dual A and Dual B works if station sends it.

SURROUND (Option)

To enable or disable sound to boost and perform process to make the "surround like sound" for clear and fidelity sound.

AUDIO

To change the sound output from primary to secondary when in PIP or PBP mode.

40□LCD TV OWNER□S INSTRUCTION **NEOVIA****FAQ / TROUBLESHOOTING**

If the TV seems to have a problem, first try the following list of possible problems and solutions before contacting a service center. If none of these troubleshooting tips apply, do not attempt to repair the product yourself. Call your nearest service center.

*** Symptoms that may appear to be a problem**

The following symptoms may happen even if the TV has no problem. First try the following list of possible problems and solutions before contacting a service center. First try the following list of possible problems and solutions. If the symptom continues, turn the TV off, and call your nearest service center.

Symptom	Possible Problem	Possible Solution
No picture on the screen, and the power LED does not turn on.	Power connection problem.	Check the power cable connectivity to the power connector. Press the power switch again.
The TV is turned on, but there is no picture on the screen.	The brightness is adjusted too low. The fluorescent tube is out of order.	Adjust the brightness and the contrast so that a picture is displayed brightly. The fluorescent tube of a LCD TV has a lifetime of about 50,000 hours. To replace the fluorescent tube, contact a service center.
An afterimage is generated when continuously watching a still image.	This is caused by an inherent property of LCD panels. Depending on the number of valid pixels, there may be black or bright pixels. These will be less than 0.005% of the sum of all pixels. This is not a problem.	
No picture is displayed on the screen, but there is no audio	Discordance between the external device jack and the input switch button location.	Adjust the input switch location.
A picture is displayed on the screen, but there no audio.	The volume is adjusted to 0. Mute is active. The audio cable is disconnected.	Turn up the Volume button. Press the Mute button again. Check the audio cable connectivity.
Remote control malfunctions.	The polarity of the batteries installed in the remote control is wrong. The batteries installed in the remote control have not been discharged completely.	Reinstall the batteries properly. Replace the batteries with new ones.
Noise is heard on the radio.	This may happen when you use a radio near the TV.	Noise may occur when you use a radio near the TV. Keep some distance between any radios and the LCD TV.
No color in a color picture	The Color density is adjusted to 0 or almost 0. tune.	Adjust the Color density to 100 or less.

NEOVIA 40" LCD TV OWNER'S INSTRUCTION

ENGLISH

Symptom	Possible Problem	Possible Solution
Duplicated pictures on the screen.	This may be caused by reflected broadcasting signals when there is are mountains, buildings, or trees near your house.	Check if there are any tall objects such as skyscrapers near your house. Check that the direction of the antenna is adjusted correctly.
Blurred or snowy picture.	The direction of the antenna is not optimal. The antenna cable is disconnected.	Check that the direction of the antenna is correct. Check that the antenna cable is connected to the ANTENNA jack on the back of the LCD TV.
A "No input signal" message appears.	The Signal connection is incorrect.	Check that the computer is turned on. Check the display cable connectivity. Check the supported input signal specifications.
	The input signal is not supported by the LCD TV.	Check the supported input signal specifications. Check the display cable specifications.
The entire screen flickers.		This product has been optimally set to watch TV channels in the factory. There may be flickering when you watch still images from a PC. This is not a problem of the product.

The remote control does not work properly!

- Are the polarities of the installed batteries correct?
- Has the battery discharged completely?
- Is the power cord plugged in properly or is there a power failure?
- Is fluorescent lighting or a neon sign near the unit?

Warning

If a problem has been detected, unplug the power cable from the wall outlet first.

Using the product when it has a fault may cause electric shocks or fire.

Do not place objects near the wall outlet so that you can unplug the power cable if necessary.

40" LCD TV OWNER'S INSTRUCTION **NEOVIA****SPECIFICATIONS**

The exterior design and the product specifications are subject to be changed without prior notice due to improvements in performance. This product is manufactured for domestic use. This product may not be used in countries whose television system type or power voltage is different.

ENGLISH

Model		NEO400LS
LCD Panel	Screen Size	40 inch wide
	Viewable Screen	885.160(H) X 497.664(V)
	Pixel Area	0.648(H) X 0.216(W)
	Type	a-si TFT activ matrix
	Viewing Angle	Up/Down : 170degrees, Left/Right : 170degrees
	Display Color	8bit, 16.7M
	MAX Resolution	1366 X 768
	Contrast Ratio	1,000 : 1
	Luminance / AVR	500 cd/m ²
	Panel Interface	LVDS
	Coating	Hard coating(3H) & Anti-glare treatment of the front polarizer
	Back Light	U-type CCFL (Cold Cathode Fluorescent Lamp)
TV/VIDEO	Receiver/Channels	VHF: Channel E2 ~ Channel E12
		UHF: Channel E21 ~ Channel E69
		CATV: Channel S1 ~ Channel S41
		Television Broadcasting System: PAL, SECAM: B/G, D/K, I, L, L'
	Antenna Interface	VHF, UHF: 75ohm
PC	Synchroni- zation	Horizontal F 30 ~ 60KHz
		Vertical F 60Hz
	Color Quality	16,772,216 colors
	Maximum Resolution	VESA 1360 X 768 @ 60Hz
	Display Color	8-bit, 16.7M
	Interface	D-sub / DVI

NEOVIA 40" LCD TV OWNER'S INSTRUCTION

ENGLISH

Model		NEO400LS
INPUT	RF	BNC
	VIDEO1	SCART1
	VIDEO2	SCART2
	VIDEO Ext.	RCA
	HDMI	HDMI
	S-VIDEO	Mini-DIN
	DVI	DVI
	PC RGB	Analog RGB, Separate H / V
	HD1 / HD2	480i/480p 60Hz, 576i/576p 50Hz, 720p 50Hz/60Hz, 1080i 50Hz/60Hz
	PC AUDIO	Stereo
	POWER SUPPLY	AC 100 ~ 240V, 50 / 60Hz
OUTPUT	VIDEO	RCA
	AUDIO L/R for VIDEO	RCA
	S/P DIF	Option
	HEADPHONE	Stereo
SPEAKER		10W X 2 / 10W X 2 (Tweeter) : RMS
Power Consumption		Maximum 300W
Power Consumption with Power Saving		Less than < 10W
Input Voltage		AC 100 ~ 240V ~ , 50 / 60Hz
Dimension	Monitor + Stand	1051 X 794 X 300
	Monitor Alone	1051 X 742 X 116
Weight		45Kg
Accessories		Remote control, Battery (AAA) X 2, Owner's Instruction, Power Cord, SCART Cable

* This devices has been registered in regards to EMI for residential use. It may be used in all areas.

Pour toute question, n'hésitez pas à contracter la HOTLINE :
In case of any question, do not hesitate to contact the HOTLINE:

France / France	: 0 892 02 17 56
Italie / Italy	: 0296 172 240
Royaume-Uni / UK	: 08 70 60 91 564
Belgique / Belgium	: 064 237 181
Luxembourg / Luxembourg	: 00 32 64 237 181
Hollande / Netherland	: 00 32 64 237 181
Suisse / Switzerland	: 0844 810 110
Espagne / Spain	: 902 100 424
Portugal / Portugal	: 229 408 962

40" LCD TV

OWNER'S INSTRUCTION

