

Nemko Korea Co., Ltd.

300-2, Osan-Ri, Mohyun-Myun, Yongin-City, Kyungki-Do, KOREA

TEL:+82 31 322 2333

FAX:+82 31 322 2332

FCC EVALUATION REPORT FOR CERTIFICATION

Manufacturer:

LPS Device Co., Ltd.

Rm 606 6F, Joongang Induspia2 Apt. Factory

144-5, Sangdaewon-dong, Joongwon-gu

Sungnam-si, Kyunggi-do, Korea

Attn : Mr. Jung, Jin-kue

Dates of Issue : March 20, 2003

Test Report No. : NK2DE042

Test Site : Nemko Korea Co., Ltd.

EMC site, Korea

FCC ID

QY6LPS-1810MF

Applicant

LPS Device Co., Ltd.

Rm 606 6F, Joongang Induspia2 Apt. Factory

144-5, Sangdaewon-dong, Joongwon-gu, Sungnam-si

Kyunggi-do, Korea

Mr. Jung, Jin-Kue

Telephone No. : +82 31 737 6305

FCC Rule Part(s):

Part 15 & 2

Classification :

FCC Class B Device

EUT Type:

LCD Monitor

The device bearing the brand name and FCC ID specified above has been shown to comply with the applicable technical standards as indicated in the measurement report and was tested in accordance with the measurement procedures specified in ANSI C63.4-1992.

I attest to the accuracy of data and all measurements reported herein were performed by me or were made under my supervision and are correct to the best of my knowledge and belief. I assume full responsibility for the completeness of these measurements and vouch for the qualifications of all persons taking them.

Back Sung-hyun

Tested By : S. H. Baek

Engineer

H.H. Kim

Reviewed By : H.H. Kim

Manager & Chief Engineer

LPS Device Co., Ltd.

FCC ID:QY6LPS-1810MF

TABLE OF CONTENTS

SCOPE	3
INTRODUCTION (Site Description)	4
GENERAL TEST CONDITION	5
DESCRIPTION OF TEST (Conducted Emissions)	7
DESCRIPTION OF TEST (Radiated Emissions)	8
DESCRIPTION OF TEST (Antenna-conducted Power Emissions)	9
TEST DATA (Conducted Emissions)	10
TEST DATA (Radiated Emissions)	11
TEST DATA (Antenna-conducted Power Emissions)	12
PLOT OF EMISSION	14
SAMPLE CALCULATIONS	16
ACCURACY of MEASUREMENT	17
TEST EQUIPMENT	18
RECOMMENDATION/CONCLUSION	19
APPENDIX A - LABELLING REQUIREMENTS	20
APPENDIX B - CIRCUIT DIAGRAM	21
APPENDIX C - PHOTOGRAPHS of TEST SET-UP	22
APPENDIX D - EUT PHOTOGRAPHS	25
APPENDIX E - USER'S MANUAL	40
APPENDIX F - SCHEMATIC DIAGRAM	41

SCOPE

Measurement and determination of electromagnetic emissions (EME) of radio frequency devices including intentional and/or unintentional radiators for compliance with the technical rules and regulations of the Federal Communications Commission under FCC part 15.

Responsible Party* :	LPS Device Co., Ltd.
Contact Person :	Mr. Jung, Jin-Kue Tel No.: +82 31 737 6305
Manufacturer :	LPS Device Co., Ltd. Tel : +82 31 737 6305 / Fax : +82 31 737 6306

- FCC ID: QY6LPS-1810MF
- EUT Type: LCD Monitor
- Adapter Voltage: Input 100-240V AC 50/60Hz 1.8A
Output 12V DC 4.5A
- Classification: FCC Class B
- Rule Part(s): FCC Part 15 & Part 2
- Test Procedure(s): ANSI C63.4 (1992)
- Dates of Test: January 15, 2003 to January 17, 2003
- Place of Tests: Nemko Korea Co., Ltd. EMC Site
- Test Report No.: NK2DE042

INTRODUCTION

The measurement procedure described in American National Standard for Methods of Measurement of Radio-Noise Emissions from Low-Voltage Electrical and Electronic Equipment in the Range of 9kHz to 40GHz (ANSI C63.4-1992) was used in determining radiated and conducted emissions emanating from **LPS Device Co., Ltd.**

FCC ID : **QY6LPS-1810MF, LCD Monitor.**

These measurement tests were conducted at **Nemko Korea Co., Ltd. EMC Laboratory**.

The site address is 300-2, Osan-Ri, Mohyun-Myun, Yongin-City, Kyungki-Do, KOREA

The area of Nemko Korea Corporation LTD. EMC Test Site is located in a mountain area at 50 kilometers (30 miles) southeast and Seoul International Airport (Kimpo Airport), 30 kilometers (18miles) south-southeast from central Seoul.

It is located in the valley surrounded by mountains in all directions where ambient radio signal conditions are quiet and a favorable area to measure the radio frequency interference on open field test site for the computing and ISM devices manufactures.

The detailed description of the measurement facility was found to be in compliance with the requirements of § 2.948 according to ANSI C63.4 on October 19, 1992.

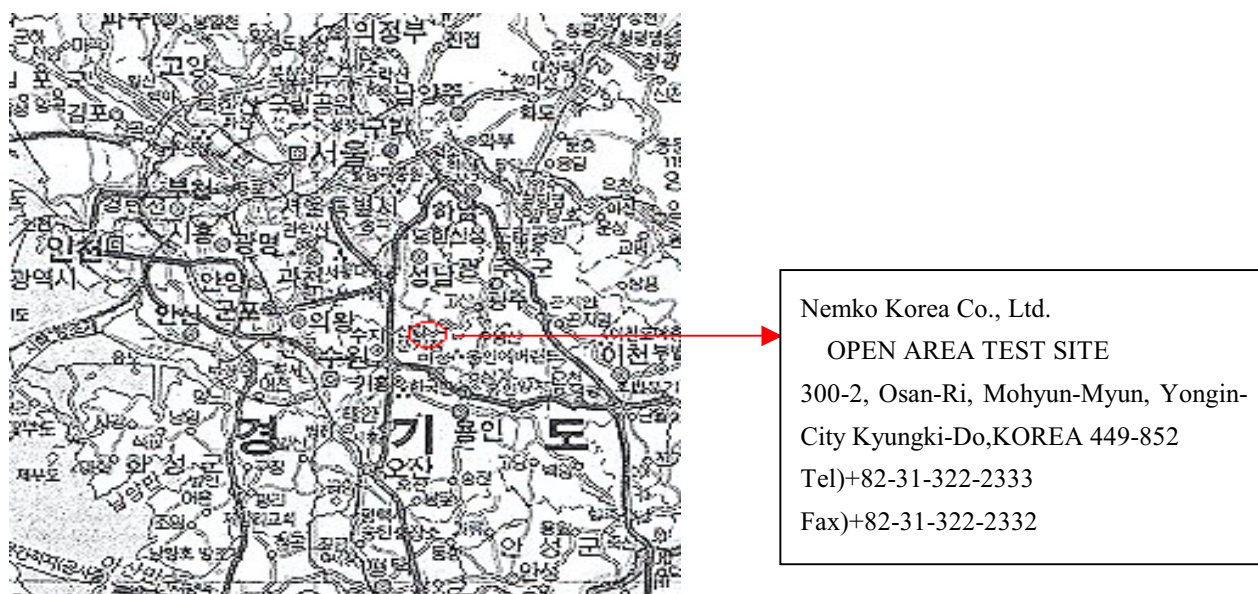


Fig. 1. The map above shows the Seoul in Korea vicinity area.

The map also shows Nemko Korea Corporation Ltd. EMC Lab and Kimpo Airport.

TEST CONDITIONS & EUT INFORMATION

Operating During Test

The EUT was operated by the software. The PC sent “H” pattern to monitor(EUT) and The monitor displayed “H” pattern on screen. It also sent “H” pattern to printer, then the printer printed it out. This software had above all functions conduct in order.

Support Equipment

PC	LG, Model: R70 1.8m unshielded AC power cable	S/N: 105KI10490
Monitor(EUT)	LPS Device, FCC ID: QY6LPS-1810MF 1.5m shielded D-sub cable	S/N: N/A
Adapter of EUT	ILAN Elec., Model: F19603A 2.0m unshielded AC power cable 1.5m unshielded DC cable	S/N: N/A
Keyboard	Sejin, Model: 104DYW10-100 1.5m unshielded Din cable	S/N: OFA024809
Serial Mouse	All Spirit , Model: WS-V1-400 1.5m unshielded Din cable	S/N: B050402
USB Mouse	Logitech, Model: OMS3CE 1.5m unshielded Din cable	S/N: LZE01702679
PS/2 Mouse	Immanuel , Model: OPM22G 1.5m unshielded Din cable	S/N: N/A
Headphone	J-Tech , Model: SBC6660 2.5m unshielded cable	S/N: N/A
Printer	HP, Model No: C5870A 2.0m unshielded AC power cable 1.2m Shield D-sub cable	S/N: SG88R131GW

EUT Information

Clock	Y31(24.576MHz), Y32(14.31818MHz), Y301(24.576MHz)
Chipset(s)	U202(AD9883A), U301(SAA7114H), U531(THC63LVD823)
Sync frequency	Vertical 60Hz
	Horizontal 31.5 - 80 KHz
LCD Panel	LM181E06 / LG Philips LCD.
Port(s)	SVHS, Video(AV), TV, Speaker, Mic

Description of Test Modes

The EUT was pre-tested under the following resolutions mode:

1. 1280 X 1024 (60Hz/ 64kHz), clock frequency 108MHz
2. 1024 X 768 (75Hz/ 60.0kHz), clock frequency 78.75MHz
3. 800 X 600 (75Hz/ 46.9kHz), clock frequency 49.5MHz
4. 640 X 480 (75Hz/ 37.5kHz), clock frequency 31.5MHz

The worst emission level was found when the EUT was tested under 1280 X 1024 resolution, therefore, the test data this mode was recorded in the report.

DESCRIPTION OF TESTS

Conducted Emissions

The Line conducted emission test facility is located inside a 4 X 7 X 2.5 meter shielded enclosure.

It is manufactured by EM engineering. The shielding effectiveness of the shielded room is in accordance with MIL-STD-285 or NSA 65-6.

A 1mX 1.5M wooden table 0.8m height is placed 0.4m away from the vertical wall and 1.5m away from the side of wall of the shielded room

Rohde & Schwarz LISN and Kyoritsu KNW-407 50ohm/50uH line impedance stabilization network are bonded to the shielded room.

The EUT is powered from the Rohde & Schwarz LISN and the support equipment is powered from the Kyoritsu LISN. Power to the LISN s are filtered by high-current high insertion loss Power line filters. The purpose of filter is to attenuate ambient signal interference and this filter is also bonded to shielded enclosure. All electrical cables are shielded by tinned copper zipper tubing with inner diameter of 1/2".

If DC power device, power will be derived from the source power supply it normally will be powered from and this supply lines will be connected to the LISNs,

All interconnecting cables more than 1 meter were shortened by non inductive bundling (serpentine fashion) to a 1 meter length.

Sufficient time for EUT, support equipment, and test equipment was allowed in order for them to warm up to their normal operating condition. The RF output of the LISN was connected to the spectrum analyzer to determine the frequency producing the maximum EME from the EUT. The spectrum was scanned from 150KHz to 30MHz with 20msec sweep time.

The frequency producing the maximum level was re-examined using the EMI test receiver. (PMM, PMM9000).

The detector function was set to CISPR quasi-peak mode.

The bandwidth of receiver was set to 9KHz. The EUT, support equipment, and interconnecting cables were arranged and manipulated to maximize each EME emission.

Each emission was maximized by; switching power lines; varying the mode of operation or resolution; clock or data exchange speed; scrolling H pattern to the EUT and of support equipment, and powering the monitor from the floor mounted outlet box and computer aux AC outlet, if applicable; which ever determined the worst case emission.

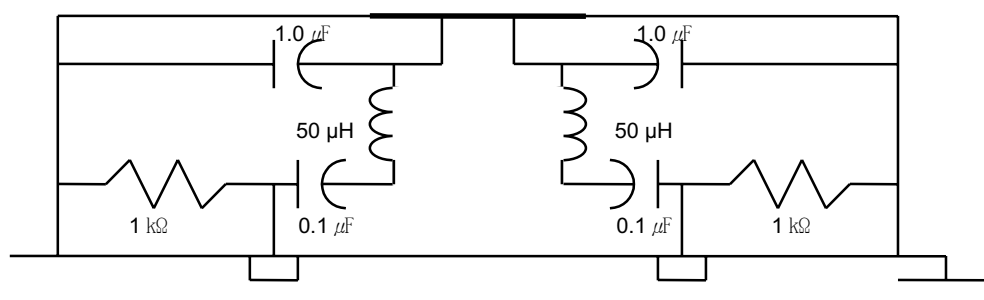


Fig. 2. LISN Schematic Diagram

DESCRIPTION OF TESTS

Radiated Emissions

Preliminary measurement were made indoors at 1 meter using broad band antennas, broadband amplifier, and spectrum analyzer to determine the frequency producing the maximum EME. Appropriate precaution was taken to ensure that all EME from the EUT were maximized and investigated. The Technology configuration, clock speed, mode of operation or video resolution, turntable azimuth with respect to the antenna was note for each frequency found.

The spectrum was scanned from 30 to 1000MHz using Biconical log Antenna(ARA, LPB-2520/A). Above 1GHz, log periodic antenna (Rohde Schwarz HL025:up to 18GHz) was used.

Final Measurements were made outdoors at 3 or 10m test range using Logbicon Super Antenna(Schwarzbeck, VULB9166) or log periodic antenna.(Rohde Schwarz HL025)

The test equipment was placed on a wooden table.

Sufficient time for the EUT, support equipment, and test equipment was allowed in order for them to warm up to their normal operating condition.

Each frequency found during pre-scan measurements was reexamined and investigated using EMI test receiver.(ESCS30)

The detector function was set to CISPR quasi-peak mode and the bandwidth of the receiver was set to 120KHz or 1MHz depending on the frequency or type of signal.

The half wave dipole antenna was tuned to the frequency found during preliminary radiated measurements.

The EUT support equipment and interconnecting cables were re configured to the setup producing the maximum emission for the frequency and were placed on top of a 0.8m high non- metallic 1.0X 1.5 meter table.

The EUT, support equipment and interconnecting cables were re-arranged and manipulated to maximize each EME emission.

The turn table containing the Technology was rotated; the antenna height was varied 1 to 4meter and stopped at the azimuth or height producing the maximum emission Each emission was maximized by : switching power lines; varying the mode of operation or resolution; clock or data exchange speed; scrolling H pattern to the EUT and of support equipment, and powering the monitor from the floor mounted outlet box and computer aux AC outlet, if applicable; which ever determined the worst case emission.

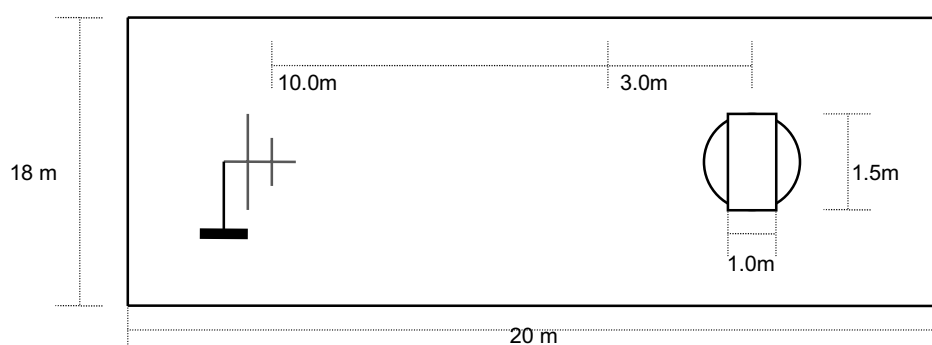


Fig. 3. Dimensions of Outdoor Test Site

DESCRIPTION OF TESTS

Antenna-Conducted Power Measurements

Power on the receive antenna terminals was to be determined by measurement of the voltage present at these terminals.

Antenna –conducted power measurements was performed with the EUT antenna terminals connected directly to measuring instrument (Rohde&Schwarz, ESCS 30) using a impedance-matching network(Rohde&Schwarz, RAM358.5414.02) to connect the measurement instrument to the antenna terminals of the EUT. Losses in decibels in impedance-matching network used was added to the measured values in dBuV.

With the receiver tuned to one of the number of frequency and voltage present at the antenna input terminals over the frequency range specified in the individual equipment requirements.

The measurements was repeated with the receiver tuned to another frequency until the number of frequencies had been successively measured.

Power on the receive antenna terminals in the ratio of V^2/R , where V is the loss-corrected voltage measured at the antenna terminals, and R is the impedance of the measuring instrument.

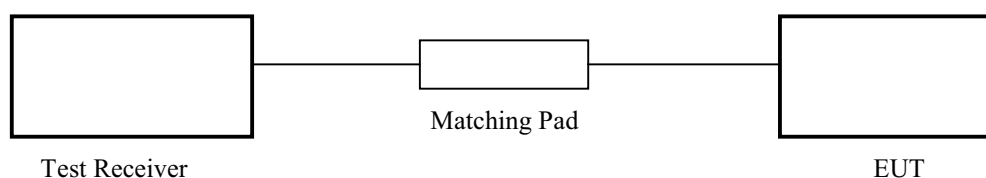


Fig. 4. Description of Test

TEST DATA

Conducted Emissions

FCC ID : QY6LPS-1810MF

Frequency (MHz)	Level(dB μ V)		Line	Limit(dB μ V)		Margin(dBuV)	
	Q-Peak	Average		Q-Peak	Average	Q-Peak	Average
0.55	38.7	18.7	N	56.0	46.0	17.3	27.3
0.60	37.5	20.4	N	56.0	46.0	18.5	25.6
0.66	36.6	29.1	N	56.0	46.0	19.4	16.9
1.53	36.1	24.3	L	56.0	46.0	19.9	21.7
1.81	36.4	26.9	L	56.0	46.0	19.6	19.1
2.19	36.1	27.4	L	56.0	46.0	19.9	18.6

Table 1. Line Conducted Emissions Tabulated Data

NOTES:

1. Measurements using CISPR quasi-peak mode
2. All modes of operation were investigated and the worst -case emission are reported. See attached Plots.
3. The limit for Class B device is on the FCC part section 15.107 (a).
4. LINE : L =Line , N = Neutral

*Baek Sung-hyun*Tested by **S. H. Baek**

TEST DATA

Radiated Emissions

FCC ID : QY6LPS-1810MF

Frequency (MHz)	Reading (dB μ V)	Pol* (H/V)	AF+CL+Amp (dB)**	Result (dB μ V/m)	Limit (dB μ V/m)	Margin (dB)
80.69	52.6	H	-20.6	32.0	40.0	8.0
202.18	48.3	H	-13.7	34.6	43.5	8.9
313.25	42.5	V	-11.0	31.5	46.0	14.5
323.97	44.3	V	-10.7	33.6	46.0	12.4
572.77	36.1	H	-4.3	31.8	46.0	14.2
755.93	36.6	V	0.5	37.1	46.0	8.9

*) No values (above 1GHz) higher than 20dB below the limit was detected during radiated emissions test.

Table 2. Radiated Measurements at 3meters

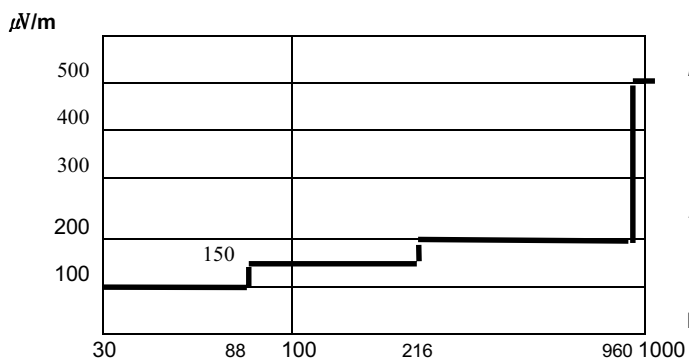


Fig. 4. Limits at 3 meters

NOTES:

1. All modes of operation were investigated the worst-case emission are reported.
2. The radiated limits are shown on Figure 4.

Above 1GHz the limit is 500 μ V/m.

NOTES:

1. *Pol. H =Horizontal V=Vertical
2. **AF+CL+Amp. = Antenna Factor + Cable Loss + Amplifier.
3. Measurements using CISPR quasi-peak mode. Above 1GHz, peak detector function mode is used using a resolution bandwidth of 1MHz and a video bandwidth of 1MHz. The peak level complies with the average limit. Peak mode is used with linearly polarized horn antenna and low-loss microwave cable.

Back Sang-hyun

Tested by S. H. Baek

TEST DATA**Antenna-Conducted Power Measurements**

FCC ID : QY6LPS-1810MF

CHANNEL	Frequency (MHz)	Reading (dBμV)	MPL ** (dB)	Result (dBμV)	Limit		Margin (dB)
					(nW)	(dBμV)	
2	101.00		7.8		2.0	50.0	
	202.00		7.8		2.0	50.0	
3	107.00		7.8		2.0	50.0	
	214.00		7.8		2.0	50.0	
4	113.00		7.8		2.0	50.0	
	226.00		7.8		2.0	50.0	
5	123.00		7.8		2.0	50.0	
	246.00		7.8		2.0	50.0	
6	129.00		7.8		2.0	50.0	
	258.00	8.7	7.8	16.5	2.0	50.0	33.5
7	221.00		7.8		2.0	50.0	
	442.00	8.8	7.8	16.6	2.0	50.0	33.4
8	227.00		7.8		2.0	50.0	
	454.00		7.8		2.0	50.0	
9	233.00		7.8		2.0	50.0	
	466.00		7.8		2.0	50.0	
10	239.00		7.8		2.0	50.0	
	478.00	8.7	7.8	16.5	2.0	50.0	33.5
11	245.00		7.8		2.0	50.0	
	490.00		7.8		2.0	50.0	
12	251.00		7.8		2.0	50.0	
	502.00		7.8		2.0	50.0	
13	257.00		7.8		2.0	50.0	
	514.00	9.8	7.8	17.6	2.0	50.0	32.4
14	517.00	11.4	7.8	19.2	2.0	50.0	30.8
	1034.00	23.3	7.8	31.1	2.0	50.0	18.9
19	547.00	13.4	7.8	21.2	2.0	50.0	28.8
	1094.00	24.8	7.8	32.6	2.0	50.0	17.4
28	601.00	16.6	7.8	24.4	2.0	50.0	25.6
	1202.00	25.7	7.8	33.5	2.0	50.0	16.5
36	649.00	11.5	7.8	19.3	2.0	50.0	30.7
	1298.00	26.1	7.8	33.9	2.0	50.0	16.1
44	697.00	11.3	7.8	19.1	2.0	50.0	30.9
	1394.00	27.7	7.8	35.5	2.0	50.0	14.5
53	751.00	13.4	7.8	21.2	2.0	50.0	28.8
	1502.00	14.6	7.8	22.4	2.0	50.0	27.6
61	799.00	10.3	7.8	18.1	2.0	50.0	31.9
	1598.00	28.2	7.8	36.0	2.0	50.0	14.0
69	847.00		7.8		2.0	50.0	
	1694.00	34.4	7.8	42.2	2.0	50.0	7.8

*) No values higher than 30dB below the limit was measured during Antenna-Conducted Power testing.

Table 3. Antenna-Conducted Power Measurements

NOTES:

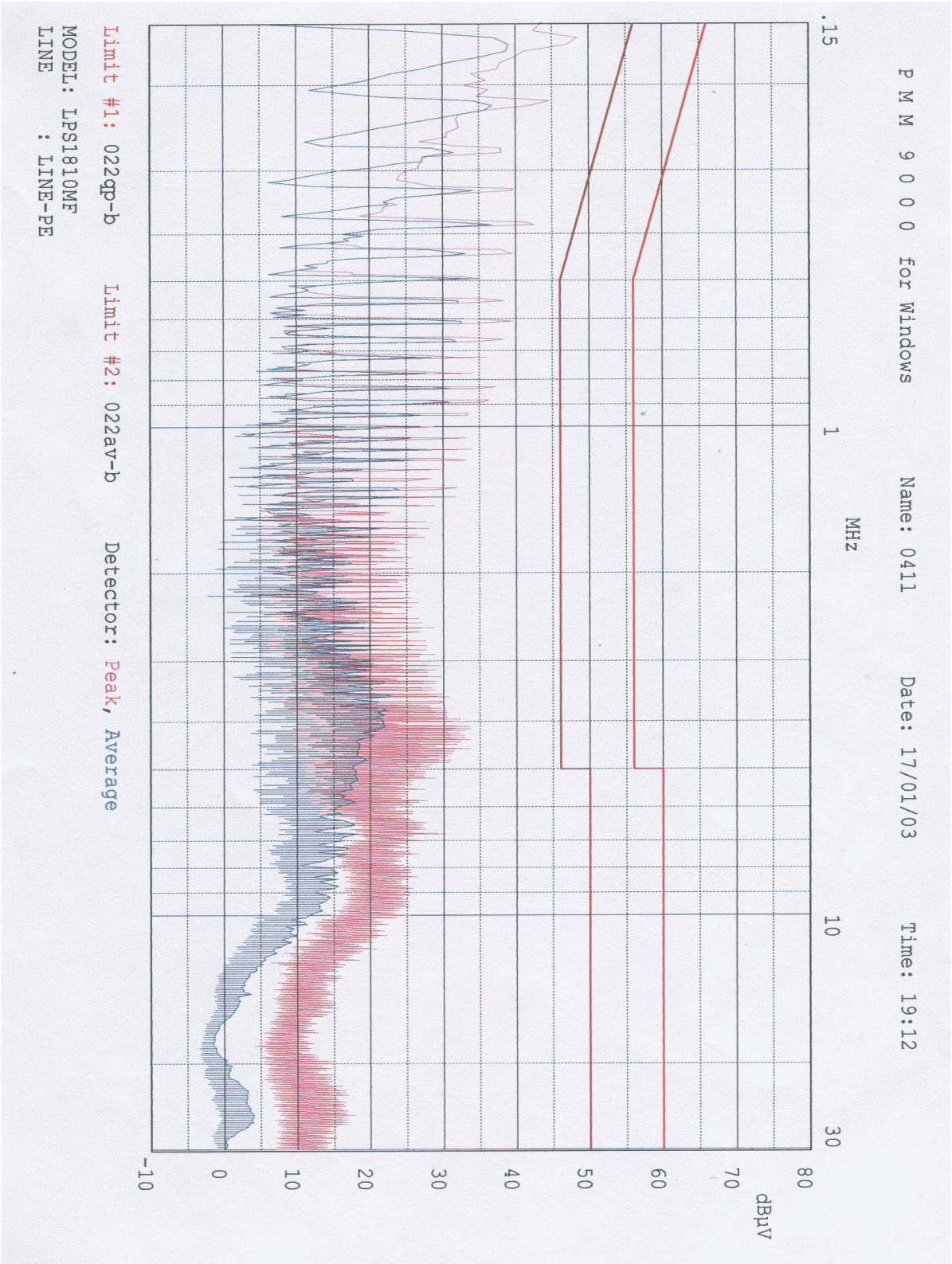
1. *T. Freq. = Tuned Frequency
2. **MPL = Impedance Matching Network Loss
3. Measurements using CISPR quasi-peak mode. The limits is 2.0 nanowatts from 30MHz to 960MHz.
4. The Antenna-conducted power test data isn't related to application for Certification, only this data was recorded as manufacturer request

Baek Sung-hyun

Tested by **S. H. Baek**

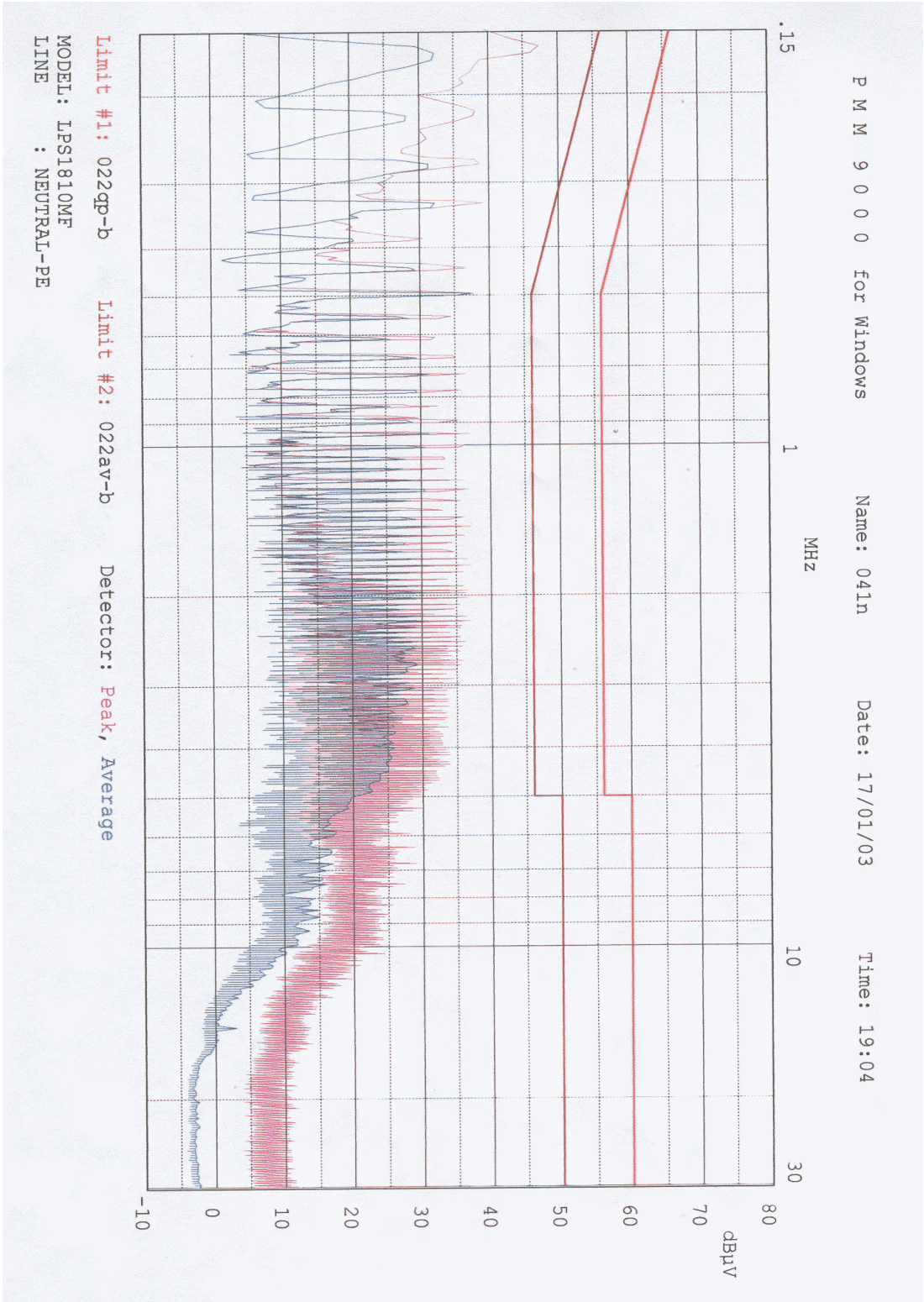
PLOTS OF EMISSIONS

- Conducted Emission at the Mains port(Line)



PLOTS OF EMISSIONS

- Conducted Emission at the Mains port(Neutral)



SAMPLE CALCULATIONS

$$\text{dB } \mu\text{V} = 20 \log_{10} (\mu\text{V}/\text{m})$$

$$\mu\text{V} = 10^{(\text{dB } \mu\text{V}/20)}$$

EX. 1.

@57.7 MHz

Class B limit = 100 $\mu\text{V}/\text{m}$ = 40.0 dB $\mu\text{V}/\text{m}$

Reading = 19.1 dB μV (calibrated level)

Antenna factor + Cable Loss = 10.12 dB

Total = 29.22 dB $\mu\text{V}/\text{m}$

Margin = 40.0 - 29.22 = 10.78

10.78 dB below the limit

EX. 2.

@98.20 MHz

Class B limit = 2 nW = 50.0 dB μV

Reading = 19.1 dB μV (calibrated level)

Impedance matching Network Loss = 7.5 dB

Total = 26.6 dB μV

Margin = 50.0 - 26.6 = 23.4

23.4 dB below the limit

ACCURACY OF MEASUREMENT

The Measurement Uncertainties stated were calculated in accordance with the requirements of NIST Technical Note 1297 with the confidence level of 95%

1. Radiation Uncertainty Calculation

<i>Contribution</i>	<i>Probability Distribution</i>	<i>Uncertainty(+/-dB)</i>
Antenna Factor	Normal (k=2)	± 0.5
Cable Loss	Normal (k=2)	± 0.04
Receiver Specification	Rectangular	± 2.0
Antenna directivity	Rectangular	± 1.0
Antenna Factor variation with Height		
Antenna Phase Center Variation		
Antenna Factor Frequency Interpolation		
Measurement Distance Variation		
Site Imperfections	Rectangular	± 2.0
Mismatch:Receiver VRC $r_i=0.3$ Antenna VRC $r_R=0.1(B_i)0.4(L_p)$ Uncertainty Limits $20\log(1+/-r_i r_R)$	U-Shaped	$+ 0.25 / - 0.26$
System Repeatability	Std.deviation	± 0.05
Repeatability of EUT	-	-
Combined Standard Uncertainty	Normal	± 1.77
Expanded Uncertainty U	Normal (k=2)	± 3.5

2. Conducted Uncertainty Calculation

<i>Contribution</i>	<i>Probability Distribution</i>	<i>Uncertainty(+/-dB)</i>
Receiver Specification	Normal (k=2)	± 2.0
LISN coupling spec.	Normal (k=2)	± 0.4
Cable and input attenuator cal.	Rectangular	± 0.4
Mismatch:Receiver VRC $r_i=0.3$ LISN vrc $r_g=0.1$ Uncertainty Limits $20\log(1+/-r_i r_R)$	U-Shaped	± 0.26
System Repeatability	Std.deviation	± 0.68
Repeatability of EUT	-	-
Combined Standard Uncertainty	Normal	± 1.18
Expanded Uncertainty U	Normal (k=2)	± 2.4

TEST EQUIPMENT

No.	Instrument	Manufacturer	Model	Calibration Date
1	*Test Receiver	R & S	ESCS 30	2002.09
2	*Test Receiver	PMM	PMM9000	2002.06
3	*Amplifier	HP	8447F	2002.09
4	*Amplifier	Agilent	8447F	2002.07
5	*Spectrum Analyzer	Advantest	R3265A	2003.03
6	*Logbicon Super Antenna	Schwarzbeck	VULB9166	2002.05
7	Log-Periodic Antenna	R & S	HL025	2003.01
8	Dipole Antenna	R & S	VHA9103	2002.05
9	Dipole Antenna	R & S	UHA9105	2002.05
11	Biconical Log Antenna	ARA	LPB-2520/A	2003.01
12	Absorbing Clamp	R & S	MDS21	2003.03
13	High Voltage Probe	R & S	ESH2-Z3	2002.09
14	Signal Generator	R & S	SMP02	2002.12
15	Matching Pad	R & S	RAM358.5414.02	2002.05
16	*LISN	R & S	ESH3-Z5	2002.10
17	*LISN	Kyoritsu	KNW-407	2002.04
18	LISN	Kyoritsu	KNW-408	2002.04
19	*Position Controller	EM Eng.	N/A	N/A
20	*Turn Table	EM Eng.	N/A	N/A
21	*Antenna Mast	EM Eng.	N/A	N/A
22	*Anechoic Chamber	EM Eng.	N/A	N/A
23	*Shielded Room	EM Eng.	N/A	N/A

*) Test equipment used during the test

RECOMMENDATION/CONCLUSION

The data collected shows that the **LPS Device Co., Ltd.**

FCC ID : **QY6LPS-1810MF, LCD Monitor.** complies with § 15.107 ,15.109 and 15.111 of the FCC Rules.

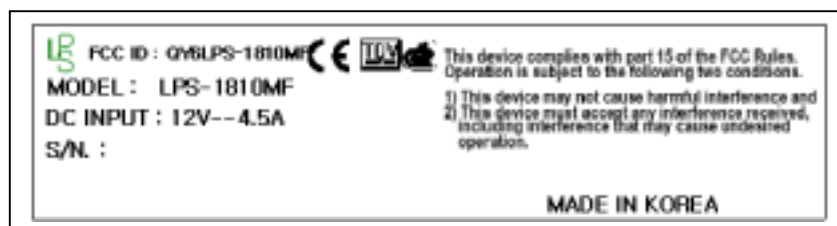
The highest emission observed was at **0.66 MHz** for conducted emissions with a margin of **16.9 dB**, at **80.69 MHz** for radiated emissions with a margin of **8.0 dB** and at **1694.00 MHz** for antenna power conducted emissions with a margin of **7.8 dB**.

.

APPENDIX A – SAMPLE LABEL

Labelling Requirements

The sample label shown shall be *permanently affixed* at a conspicuous location on the device and be readily visible to the user at the time of purchase.



● FCC ID Location of EUT



APPENDIX B – CIRCUIT DIAGRAM

APPENDIX E – USER’S MANUAL

APPENDIX F – SCHEMATIC DIAGRAM
